



Wisconsin Department of Transportation

May 11, 2026

Division of Transportation Systems Development

Bureau of Project Development
4822 Madison Yards Way, 4th Floor South
Madison, WI 53705

Telephone: (608) 266-1631
Facsimile (FAX): (608) 266-8459

NOTICE TO ALL CONTRACTORS:

Proposal #15: 1550-04-78, WISC 2026334
Clear Lake - Cumberland
USH 8 E to STH 48 W
USH 63
Barron County

Letting of May 12, 2026

This is Addendum No. 02, which provides for the following:

Special Provisions:

Added Special Provisions	
Article No.	Description
31	UV GRP CIPP Liners, 24-Inch, Item SPV.0090.02; 36-Inch, SPV.0090.03; 48-Inch, SPV.0090.04

Deleted Special Provisions	
Article No.	Description
24	Culvert Pipe Liners, 24-Inch, 36-Inch, 48-Inch, Item 520.9700.S; Cleaning Culvert Pipes for Liner Verification, Item 520.9750.S.

Schedule of Items:

Added Bid Item Quantities					
Bid Item	Item Description	Unit	Proposal Total Prior to Addendum	Quantity Added	Proposal Total After Addendum
SPV.0090.02	UV GRP CIPP Liners 24-Inch	LF	0	154	154
SPV.0090.03	UV GRP CIPP Liners 36-Inch	LF	0	110	110
SPV.0090.04	UV GRP CIPP Liners 48-Inch	LF	0	188	188

Deleted Bid Item Quantities					
Bid Item	Item Description	Unit	Proposal Total Prior to Addendum	Proposal Quantity Change (-)	Proposal Total After Addendum
520.9700.S	Culvert Pipe Liners (size) 01. 24-Inch	LF	154	-154	0
520.9700.S	Culvert Pipe Liners (size) 02. 36-Inch	LF	110	-110	0
520.9700.S	Culvert Pipe Liners (size) 03. 48-Inch	LF	188	-188	0
520.9750.S	Cleaning Culvert Pipes for Liner Verification	EACH	5	-5	0

Plan Sheets:

Revised Plan Sheets	
Plan Sheet	Plan Sheet Title (brief description of changes to sheet)
58	Miscellaneous Quantity – Remove all Culvert Pipe Liners items. Remove Cleaning Culvert Pipes for Liner Verification item. Add UV GRP CIPP Liners items.
73	Plan – Sta 68+45; Revise culvert pipe liner notation, remove cleaning culvert pipes for liner verification notation.
74	Plan – Sta 101+45; Revise culvert pipe liner notation, remove cleaning culvert pipes for liner verification notation. Sta 107+96; Revise culvert pipe liner notation, remove cleaning culvert pipes for liner verification notation.
89	Plan – Sta 533+84; Revise culvert pipe liner notation, remove cleaning culvert pipes for liner verification notation. Sta 533+91; Revise culvert pipe liner notation, remove cleaning culvert pipes for liner verification notation.
217	Cross-Section – Sta 68+45; Revise culvert pipe liner notation.
220	Cross-Section – Sta 101+45; Revise culvert pipe liner notation.
221	Cross-Section – Sta 107+96; Revise culvert pipe liner notation.
227	Cross-Section – Sta 533+84; Revise culvert pipe liner notation.
228	Cross-Section – Sta 533+91; Revise culvert pipe liner notation.

The responsibility for notifying potential subcontractors and suppliers of these changes remains with the prime contractor.

Sincerely,

Mike Coleman

Proposal Development Specialist
Proposal Management Section

ADDENDUM NO. 02

1550-04-78

May 11, 2026

Special Provisions

24. DELETED

31. UV GRP CIPP Liners, 24-Inch, Item SPV.0090.02; 36-Inch, SPV.0090.03; 48-Inch, SPV.0090.04

A Description

This special provision describes furnishing, preparing, installing, and verifying ultraviolet (UV) glass reinforced plastic (GRP) cured-in-place-pipe (CIPP) liners for storm sewer or culvert pipe that when cured provides a structurally sound, smooth, joint less and watertight pipe.

A.1 Referenced Documents

The following documents form a part of this specification to the extent stated herein:

- ASTM F2019 Standard Practice for Rehabilitation of Existing Pipelines and Conduits by the Pulled in Place Installation of Glass Reinforced Plastic (GRP) Cured-in-Place Resin Pipe (CIPP)
- ASTM F1216 Standard Practice for Rehabilitation of Existing Pipelines and Conduits by the Inversion and Curing of a Resin-Impregnated Tube
- ASTM F1743 Standard Practice for Rehabilitation of Existing Pipelines and Conduits by the Pull In and Inflate and Curing of a Resin-Impregnated Tube.
- ASTM D543 Test Method for Resistance of Plastics to Chemical Reagents
- ASTM D578 Standard Specification Glass Fiber Strands
- ASTM D638 Standard Test Method for Tensile Properties of Plastics
- ASTM D790 Standard Test Methods for Flexural Properties of Unreinforced and Reinforced Plastics and Electrical Insulating Materials
- ASTM D2122 Standard 1 Test Method for Determining Dimensions of Thermoplastic Pipe and Fittings
- ASTM D3567 Standard Practice for Determining Dimensions of "Fiberglass" (Glass- Fiber Reinforced Thermosetting Resin) Pipe and Fittings
- ASTM D5813 Standard Specification for Cured-in Place Thermosetting Resin Sewer Pipe

B Materials

B.1 General

Provide a UV cured GRP system adhering to ASTM F2019 that has a minimum 500,000 linear feet or 1000 lined sections of successful installations in the United States and that has been continuously available and in service for a minimum of 5 years.

Allow the engineer to inspect all liner to be installed under this work at the manufacturer's plant(s) and wet-out facility for compliance with these specifications if requested. Require the wet-out facility's cooperation in these inspections.

B.2 Glass Fiber Tube

Furnish a flexible fiber glass tube meeting the requirements of ASTM F2019 as appropriate that when installed, will tightly fit the internal circumference and length of the original pipe. Provide a glass fiber tube that is homogeneous throughout, uniform in color, free of cracks, holes, foreign materials, blisters, and deleterious faults. Inspect glass fiber tube for defects at time of manufacturer and prior to installation.

Fabricate any seams in the tube stronger than the unseamed material. Do not utilize overlapped layers of the tube in longitudinal seams that cause lumps in the final product. Do not form joints perpendicular to the long axis. The tube shall be homogeneous across the entire wall thickness containing no intermediate or encapsulated elastomeric layers. No material included in the tube may cause delamination in the cured CIPP.

Utilize an outer and inner film to ensure that the liner remains intact during the insertion process and to protect the resin at all times during the installation and curing process from water and debris contamination, and resin migration. Provide film materials that are both impervious to airborne styrene, with the outer material also having UV blocking characteristics.

Conduct tube wet out in an indoor environmentally controlled manufacturing setting with a quality management system registered according to and conforming with the current ISO 9001 standard or having implemented a quality system similar to that in the ISO 9001 requirements. Ensure that proper materials and amounts are used in the resin saturation process and in liner shipping and storage.

No onsite wet out will be allowed. The engineer may inspect the wet out facility at the manufacturer's plant(s) for compliance with these specifications. Fully impregnate the glass fiber tube with the appropriate resin using system under manufacturer quality-controlled conditions. Minimize air entrapment to the lowest possible amount. No dry or unsaturated layers shall be evident.

Provide a wet out tube that when compressed at installation pressures will meet or exceed the design thickness. Construct the tube to withstand installation pressures and curing temperatures, have sufficient strength to bridge missing pipe, stretch to fit irregular pipe sections, and invert smoothly around bends.

Mark the tube for distance at regular intervals along its entire length, not to exceed 5 feet. Include the manufacturer's name or identifying symbol.

The liner should be seamless in its cured state to ensure homogenous physical properties around the circumference of the cured liner. The wall color of the interior pipe surface of CIPP after installation shall be a light reflective color so that a clear detailed examination with closed circuit television inspection equipment may be made.

Obtain compound samples and prepare test specimens according to the latest applicable ASTM standards from the manufacturer if directed by the engineer.

B.3 Resin

Furnish a corrosion resistant polyester, vinyl ester, or orthothalic (either ppg or npg grade) and catalyst resin system, compatible with the installation process, that when properly cured within the tube creates a composite that meets the requirements of ASTM F1216, ASTM D5813, and ASTM F2019, the physical properties in Table 1, and those requirements which are to be utilized in the structural design of the CIPP for this project. Resins created from recycled materials are not allowed.

Table 1 CIPP Minimum Physical Properties

Flexural Modulus (minimum)	725,000 psi
Flexural Strength (minimum)	15,000 psi
Long term E-modulus	675,000 psi

Long term tensile bending strength	13,500 psi
------------------------------------	------------

Use resin requiring a UV light to cure the liner. A photo-initiator system must be added to the resin prior to the impregnation. The photo-initiator system shall be tuned to the UV-curing equipment used or vice-versa. The liquid UV resin shall saturate the tube and produce a properly cured liner, which is resistant to abrasion due to solids, grit, and sand.

B.4 Structural Requirements

A minimum of 14 days prior to delivery of the liner materials, submit design calculations prepared by an engineer licensed in the State of Wisconsin that meet the requirements of the manufacturer and that are designed as suggested by ASTM F2019, Appendix X1. The designer may use ASTM F1216, Appendix XI as modified in ASTM F2019 X1.1.2 for each pipe segment with less than 10% ovality. If the ovality is 10% or greater, use either the ASCE or the WRc Sewerage Rehabilitation Manual, Type II Design, Section 5.3.2.iii for non-round pipe. Assume the fully deteriorated condition and assume no bonding to the original pipe wall for the CIPP design. Verify the Long-Term Flexural Modulus used in design by independent testing and provide documentation to the Department per Section B.5.1. Do not exceed 50% of the short-term values for the Long-Term Modulus in design. CIPP thickness shall not be less than that which is computed from the design requirements in the table below, for resin systems with physical properties shown.

Table 2 - CIPP Design Criteria

Design Variable	Value
Culvert Inside Diameter	Sta 68+45; 24-inch Sta 101+45; 24-inch Sta 107+96; 36-inch Sta 533+84; 48-inch Sta 533+91; 48-inch
Soil Density: w	120 pcf
Live Load: Ws	Follow AASHTO LRFD Bridge Design Specifications (AASHTO, 2012) Article 3.6.1.2.6
Minimum Height of Water above Culvert Crown: Hw	Sta 68+45; 48-inch Sta 101+45; 48-inch Sta 107+96; 72-inch Sta 533+84; 68-inch Sta 533+91; 68-inch
Height of Soil above Culvert Crown: H	Sta 68+45; 8.0 feet Sta 101+45; 5.2 feet Sta 107+96; 14.2 feet Sta 533+84; 6.5 feet Sta 533+91; 6.5 feet
Culvert Deflection/Ovality:	2% minimum. To be verified by liner designer.
Modulus of Soil Reaction E's	Follow AASHTO LRFD Bridge Design Specifications (AASHTO, 2012) Article 12.12.3.5.1
Long-term Modulus of Elasticity of CIPP Liner: E _L	362,500 psi minimum, 50% of initial value in ASTM F2019. Actual value per the manufacturer can be used. Provide supporting data verified by independent testing.
Factor of Safety: N	2
Flexural Strength	15,000 psi Actual value per the manufacturer can be used. Provide supporting data verified by independent testing

B.5 Experience and Quality Control

B.5.1 Experience

Demonstrate a minimum of five (5) years experience in the installation of cured in place liners by the installation contractor with at least 5 projects in that time totaling over 50,000 feet of installed liner. The installing contractor must be trained and certified by the UV GRP manufacturer and have documented experience with a fiberglass UV cured liner.

Provide an experienced inspector or supervisor to oversee the installation of the CIPP liner, who completed the NASSCO cured-in-place-pipe inspector training class or equivalent and has at least three (3) years experience with cured in place pipe liner installation having previously supervised a minimum of 50,000 linear feet of CIPP lining using a similar resin and flexible tube and using the specific method of installation and curing proposed.

If the contractor does not have 50,000 linear feet of CIPP lining experience with the UV curing system being used, then a manufacturer's onsite representative must be present during installations of the CIPP system until such time the Department is confident in the contractor's ability. The contractor is to provide the engineer with the manufacturer representative's work experience for approval. Do not begin prior to the engineer's approval of the manufacturer's onsite representative.

Provide five (5) references of completed projects of similar installations by the contractor.

B.5.2 Installation and Quality Control Plan

Furnish a detailed installation and quality control plan, to be discussed at the preconstruction meeting outlining measures to assure the quality requirements of the contract are met including but not limited to;

- A summary table of CIPP material properties, including short-term flexural modulus of elasticity, 50-year flexural modulus of elasticity, short-term flexural strength (bending stress), 50-year flexural strength (bending stress), and chemical resistance.
- Manufacturer's product certifications and available standard written warranty for materials used in the liner system including documentation of testing to confirm a minimum 50-year design life for the liner, adherence to applicable ASTM standards and safety data sheets.
- Manufacturer's product literature, and application and installation requirements for materials used in the liner including
 - Liner and resin/catalyst type including, manufacturer, product names and mixing ratios, the location of the facility where each was manufactured, and a list of appurtenant materials and accessories to be furnished.
 - Maximum, minimum and ideal installation temperatures
 - Minimum pressure required to hold tube tight to the host conduit and maximum pressure so not damage the tube
 - Curing times
 - Maximum pulling forces as applicable
- Independent third-party certified laboratory test reports demonstrating that the exact resin/liner combination to be used for this project meets the requirements for initial structural properties and chemical resistance (performed according to ASTM F1216).

Independent third-party certified laboratory test reports demonstrating that the exact resin and liner to be used for this project has been tested for long-term flexural modulus of elasticity and long-term flexural strength (i.e. 10,000 hour creep testing performed according to ASTM 2990 or DIN 761 for design conditions applicable to this project). When filled resins are proposed, complementary data of the same data for unfilled resin shall also be provided. If the data submitted is not for the exact liner to be used on this project, submit a detailed description of the physical properties of both the liner used in the test and the liner to be used for this project to demonstrate that the two liners are comparable in terms of physical properties.

Perform testing for 10,000 hours under test conditions and loadings described below. The data points from 1,000 hours to 10,000 hours, or such other time period as determined by the engineer based on the curve or slope of the plotted data, of the long-term flexural

modulus shall be extrapolated using a log-log scale linear regression analysis to determine the minimum service life performance of the resin-tube.

Testing shall be conducted at:

- Temperature 21°C to 25°C
 - Relative humidity: 50% minimum
 - Load: Load shall be calculated at 0.25% of the short-term E-modulus as tested per ASTM D790 or ISO 178, or as approved by engineer.
- Wet out quality management ensuring that proper materials and amounts are used in the resin saturation process and in liner shipping and storage. At a minimum, the quality control documentation shall include resin lot numbers, volumes of resin, catalyst, enhancers, date of wet-out, storage / transportation controls, and quality assurance procedures.
 - Method of installation.
 - Proposed quality controls checks that will be performed and in place by the contractor during installation.
 - Method of curing and monitoring including:
 - Curing speed
 - Light source size and wattage
 - Inner air pressure
 - Curing temperatures

These parameters are to be controlled and documented during installation and curing and provided to the engineer including date and time and length of installed liner.

- Product sampling, liner thickness compliance, and notification/resolution of observed liner defects and/or wrinkling observed by the contractor during post lining televising operations.
- Defined responsibilities, as assigned to specific contractor's personnel, for assuring that all the quality assurances are met.
- An outline of specific repair or replacement procedures for potential defects that may occur in the installed CIPP. Provide recommended repair/replacement procedures per the CIPP system manufacturer.
- Bypass flow plan if required.

B.6 Quality and Inspection Report

Submit a report of the inspection and quality activities performed during and after lining. Inspect pipes with a color pan and tilt, 360° rotating head camera specifically designed and constructed for sewer inspection. Provide pre and post lining video inspection files upon completion of the lining. Format files for viewing on a standard PC without additional media software. Perform video work in accordance with NASSCO PACP standards or engineer approved equal.

B.7 Cured Liner Properties

B.7.1 Color

Provide a tube where the cured interior pipe surface after installation is a light reflective color so that a clear, detailed examination with closed circuit television inspection can be made.

B.7.2 Chemical Resistance

Provide a chemically resistance tube. Evaluate the inner surface of the cured resin/fiberglass liner matrix in a laminate for qualification testing of long term chemical exposure to a variety of chemical effluents in a manner consistent with 6.4.1 and 6.4.2 of ASTM D5813.

Provide samples of tube and resin similar to that proposed for actual construction. It is required that CIPP samples with and without plastic coating meets these chemical testing requirements.

B.7.3 Hydraulic Capacity

Maintain the overall hydraulic profile as large as possible with the CIPP having a minimum of the full flow capacity of the original pipe before rehabilitation. Calculated capacities may be derived using a commonly accepted roughness coefficient for the existing pipe material taking into consideration its age and condition.

C Construction

C.1 General

No change of material, design values, or procedures as developed before bidding the contract may be made during the course of the work without the prior written approval of the engineer.

Coordinate with the engineer to field verify pipe lining locations and lengths before beginning work. The department will locate and designate all right of way areas open and accessible for the work and provide rights of access to these points. If a shoulder must be closed to traffic because of the work, institute the actions necessary to do this upon concurrence of the Department for the mutually agreed time period.

Bypass pumping or flow diversion is the responsibility of the contractor. If dewatering/bypass operations are required from one pipe structure to another pipe structure or from the upstream to downstream end of a culvert and the bypass flow is not transporting sediments (sand, silt, and clay particles) from a tributary work site area, bypass pumping operations will be allowed provided that the department has been made aware of and approves operation. When pumping bypass flows, the discharge location will need to be stable and not produce any erosion from the discharge velocity that would cause release of sediment downstream. If dewatering operations require pumping of water containing sediments (sand, silt, and clay particles), the discharge will not be allowed to leave the work site or discharge to a storm water conveyance system without sediment removal treatment. Refer to WDNR Technical Standards for Dewatering as applicable.

https://dnr.wisconsin.gov/topic/Stormwater/standards/const_standards.html

C.2 Handling and Storage

Take care in shipping, handling and storage to avoid damaging the liner. Store liner as recommended by manufacturer and as approved by the engineer. Avoid exposure to light prior to installation. Any liner damaged in shipment, storage, or installation shall be replaced as directed by the Engineer at no additional cost.

C.3 Accessibility of Water

This site is rural and without access to public waters systems. Supply water for cleaning the host pipe or other processes.

C.4 Cleaning Existing Conduits

Remove internal debris from the existing pipeline including any roots and protruding connections. Clean the pipes with hydraulically powered equipment, high-velocity jet cleaners, or mechanically powered equipment capable of sufficiently cleaning and clearing the existing pipe. Use precautions during the cleaning operations to prevent additional damage to the existing pipe. Properly dispose of all sediment removed from the cleaning process.

C.5 Inspection of Pipeline

Inspect the interior of the pipeline carefully to determine the location of any conditions which may prevent proper installation of CIPP into the pipelines, note these so that these conditions can be corrected. Keep a digital video and suitable log for later reference by the Department.

C.6 Repair Techniques & Material Installation

Fill any voids in the host pipe that can not be bridged prior to the installation of the CIPP liner. Small gaps and offsets in the pipe culvert joints can be bridged by the CIPP liner. Repair significant gaps and offsets and stop water infiltration that may impact CIPP curing.

C.7 Installation

C.7.1 Installation of Glass Fiber Tubing

Use a constant tension winch, as specified by the liner manufacturer, to pull the glass fiber liner into position in the pipe. Provide a longitudinal fiberglass reinforcement band which runs the entire length of the liner ensuring that the pulling force is transferred to the band and not the fiberglass liner. Pull the liner keeping the force below the system recommendation for the tubing installed. Provide end plugs to cap each end of the glass fiber liner to prepare for pressurizing the liner. Secure the end caps to prevent them from being expelled due to pressure. Use liner restraints in manholes.

Use a slip sheet/gliding foil on the bottom one third to one half of the pipe prior to liner insertion (if it is not already part of the manufactured outer film of the liner), for the purpose of protecting the liner during insertion and reduce the drag, or as recommend by the liner manufacturer.

C.7.2 Curing Liner

Cure the glass fiber liner with UV light sources at a constant inner pressure. Hold the liner tight to the host pipe per the manufacturer's recommended equipment and methods. Do not release liner inner pressure until liner reaches curing parameters specified by the manufacturer.

Assemble the UV light sources according to the manufacturer's specifications for the liner diameter. Draw a multi-lamp ultraviolet light curing assembly fitted with CCTV equipment through the pipe while the tube is expanded under pressure. Verify that the liner is properly fitted to the host pipe without any wrinkles or fins that should be avoidable given the current cross-sectional configuration (geometry) of the host pipe. Correct defects before proceeding on to the UV-light curing process. Take care not to damage the liner or inner film material when inserting the curing equipment.

Use curing speeds as recommended by the manufacturer and determined by contractor based on various site specific field conditions. The optimal curing speed, or travel speed of the energized UV light sources, is determined for each length of liner based on liner diameter, liner thickness, and exothermic reaction temperature. Use infrared sensors during the curing process to record curing data that will be submitted to the engineer with a post CCTV inspection. Monitor and control the parameters stated in the quality control plan, giving the engineer a record of the curing parameters over every segment of the entire length of the liner.

Remove the inner film material if the liner is manufactured with a removable inner film as recommended by the manufacturer after curing and discard.

Once cured, the cured-in-place pipe should be continuous and tight fitting. Cut the pipe liner neatly and smoothly at each end of the host pipe to prevent snagging and collection of debris. Capture and dispose of chips generated during trimming the liner. Do not let this material enter waterways.

C.8 Quality Control and Testing

Prepare cured liner samples and test physical properties in accordance with ASTM F2019, Section 7. Test for conformance with the manufacturer's final CIPP design values and the CIPP Design Criteria requirement of this special provision including flexural properties listed.

Provide documentation of quality checks performed according to this part and as described in the project quality control plan.

C.9 Workmanship and Inspection

Perform an initial visual and final television inspection to document the as-built condition after the completion of the liner installation. Inspect the CIPP in accordance with ASTM F2019, Section 7.3 and this part. Provide copies of as-built inspection documentation to the engineer in digital format that can be read without specialized software.

Provide a finished liner that is continuous over the entire length of the conduit section and that tightly conforms to the walls of the existing (host) conduit pipe that is homogeneous throughout and free of any dry spots, lifts, delaminations, wrinkles, protrusions, holes, cracks, foreign material, blisters, or other deleterious faults or defects, which in the opinion of the engineer, will affect the liner's structural integrity, hydraulic performance, future maintenance access, and overall liner performance. Provide a finished liner with no visible gaps or annular space between the finished liner and the existing (host) pipe at the manhole, sewer service connection, or other exposed points within the finished lined section. Where the CIPP does not meet the requirements of Section 7 of ASTM F2019 or this specification, the affected portions of the CIPP shall be removed and replaced with an acceptable repair as specified in 6.2 of ATSM Specification D5813 as approved by the engineer. Any excavation or restoration necessary is incidental with no additional payment.

Upon acceptance of the installation work and testing, restore the project area affected by the operations to its original condition.

D Measurement

The department will pay for UV GRP CIPP Liners 24-Inch, UV GRP CIPP Liners 36-Inch, and UV GRP CIPP Liners 48-Inch by the linear foot, acceptably completed.

E Payment

The department will pay for measured quantities at the contract unit price under the following bid item:

ITEM NUMBER	DESCRIPTION	UNIT
SPV.0090.02	UV GRP CIPP Liners 24-Inch	LF
SPV.0090.03	UV GRP CIPP Liners 36-Inch	LF
SPV.0090.04	UV GRP CIPP Liners 48-Inch	LF

Payment is full compensation for furnishing all labor, tools, equipment, materials, testing, reports and incidentals, including any required bypass pumping or flow diversion, cleaning of the host pipe, gap, void and offset repair in the host pipe, and disposal of wastes including curing or cleaning water necessary to complete the contract work according to the above stated specifications.

Schedule of Items

Attached, dated May 11, 2026, are the revised Schedule of Items Pages 1 - 10.

Plan Sheets

The following 8½ x 11-inch sheets are attached and made part of the plans for this proposal:
Revised: 58, 73, 74, 89, 217, 220, 221, 227, 228.

END OF ADDENDUM

ASPHALTIC SURFACE DRIVEWAYS AND FIELD ENTRANCES

STATION	STATION	LOCATION	TON	COMMENTS
91+16	91+69	USH 63	17	DRIVEWAY
96+43	96+94	USH 63	10	DRIVEWAY
103+16	103+53	USH 63	7	DRIVEWAY
127+22	127+59	USH 63	7	DRIVEWAY
235+98	236+29	USH 63	6	DRIVEWAY
258+89	259+44	USH 63	10	DRIVEWAY
266+96	267+41	USH 63	8	DRIVEWAY
343+13	343+36	USH 63	4	DRIVEWAY
371+85	372+27	USH 63	7	DRIVEWAY
520+12	520+46	USH 63	7	DRIVEWAY
539+26	539+67	USH 63	8	DRIVEWAY
554+36	554+59	USH 63	5	DRIVEWAY
580+54	580+98	USH 63	10	DRIVEWAY
396+35	396+50	USH 63	1	DRIVEWAY REPLACEMENT BEHIND C&G
396+72	396+87	USH 63	1	DRIVEWAY REPLACEMENT BEHIND C&G
PROJECT TOTAL			108	

ASPHALTIC RUMBLE STRIPS, CENTERLINE

STATION	STATION	LOCATION	LF	COMMENTS
60+00	61+42	USH 63	142	
65+38	151+17	USH 63	8579	
155+17	197+40	USH 63	4223	
206+25	226+80	USH 63	2055	
232+10	283+45	USH 63	5135	
287+45	347+30	USH 63	5985	
353+80	355+40	USH 63	260	
357+40	386+55	USH 63	2915	
411+00	420+15	USH 63	915	
428+95	490+76	USH 63	6581	
494+88	517+10	USH 63	2222	
521+10	543+10	USH 63	2200	
547+10	569+25	USH 63	2215	
573+25	582+40	USH 63	915	
586+40	595+50	USH 63	910	
599+50	623+72	USH 63	2422	
PROJECT TOTAL			47674	

ASPHALTIC RUMBLE STRIPS, SHOULDER

CATEGORY	STATION	STATION	LOCATION	LF	COMMENTS
0020	56+91	391+00	USH 63 LT	29909	
	410+75	623+71	USH 63 LT	18156	
	56+91	391+00	USH 63 RT	31604	
	409+75	623+71	USH 63 RT	20201	
CATEGORY 0020 TOTAL				99870	
PROJECT TOTAL				99870	

ALL ITEMS ARE CATEGORY 0010 UNLESS OTHERWISE NOTED.

PROJECT NO: 1550-04-78

HWY: USH 63

COUNTY: BARRON

MISCELLANEOUS QUANTITIES

SHEET

58

CULVERT PIPE SUMMARY - DRIVEWAYS

STATION	LOCATION	APRON ENDWALLS FOR CULVERT	520.1018	CULVERT PIPE CLASS III-A	INLET**	OUTLET**
91+45 LT	USH 63	PIPE 18-INCH	EACH	NON-METAL 18-INCH	ELEVATION	ELEVATION
		2			1246.30	1245.30
PROJECT TOTALS		2	52			

**PIPE INVERT AT END OF PIPE FOR INFORMATION ONLY. FIELD VERIFY.

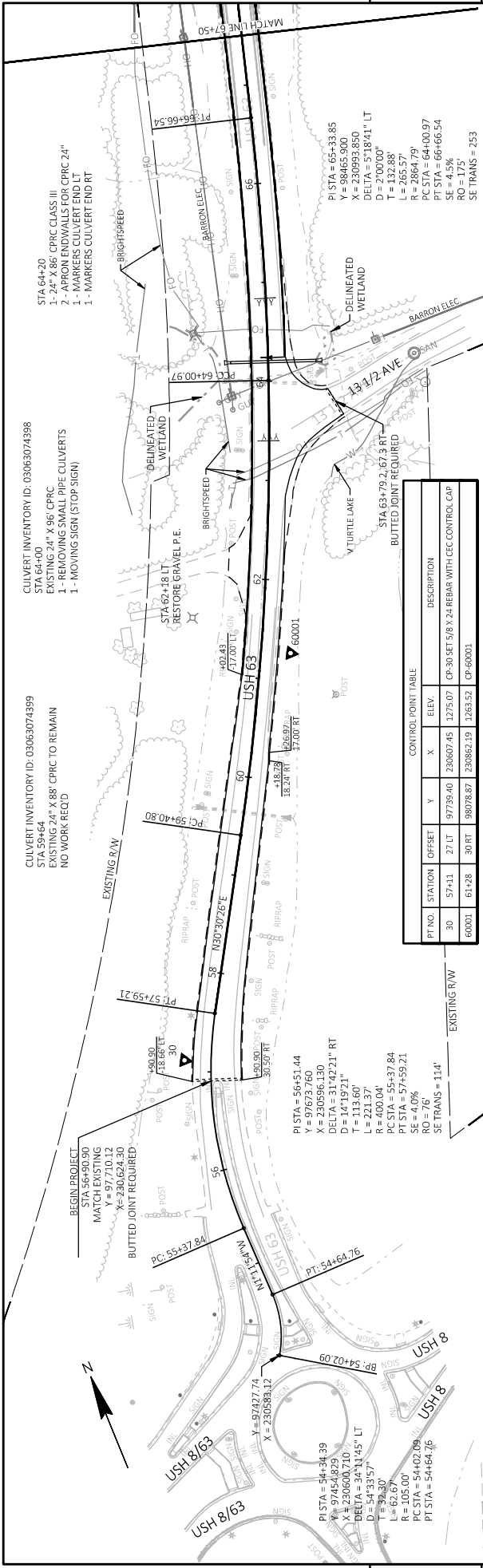
CULVERT PIPE SUMMARY - LINERS

STATION	LOCATION	LF	SPV.0090.02	SPV.0090.03	SPV.0090.04	COMMENTS
68+45	USH 63	82	UV GRP CIPP LINERS	UV GRP CIPP LINERS	UV GRP CIPP LINERS	
101+45	USH 63	72	24-INCH	36-INCH	48-INCH	
107+96	USH 63	110				SLOPE 2.82%
533+84	USH 63	-			94	SLOPE 0.25%
533+91	USH 63	-			94	SLOPE 0.52%
PROJECT TOTALS		154	110	188		

CLEANING CULVERT PIPES

STATION	LOCATION	CLEANING CULVERT PIPES EACH
160+88	USH 63	1
198+78	USH 63	1
211+82	USH 63	1
268+74	USH 63	1
391+39	USH 63	1
565+31	USH 63	1
583+62	USH 63	1
588+29	USH 63	1
PROJECT TOTAL		8

Addendum No. 02
 ID 1550-04-78
 Revised Sheet 58
 May 11, 2026

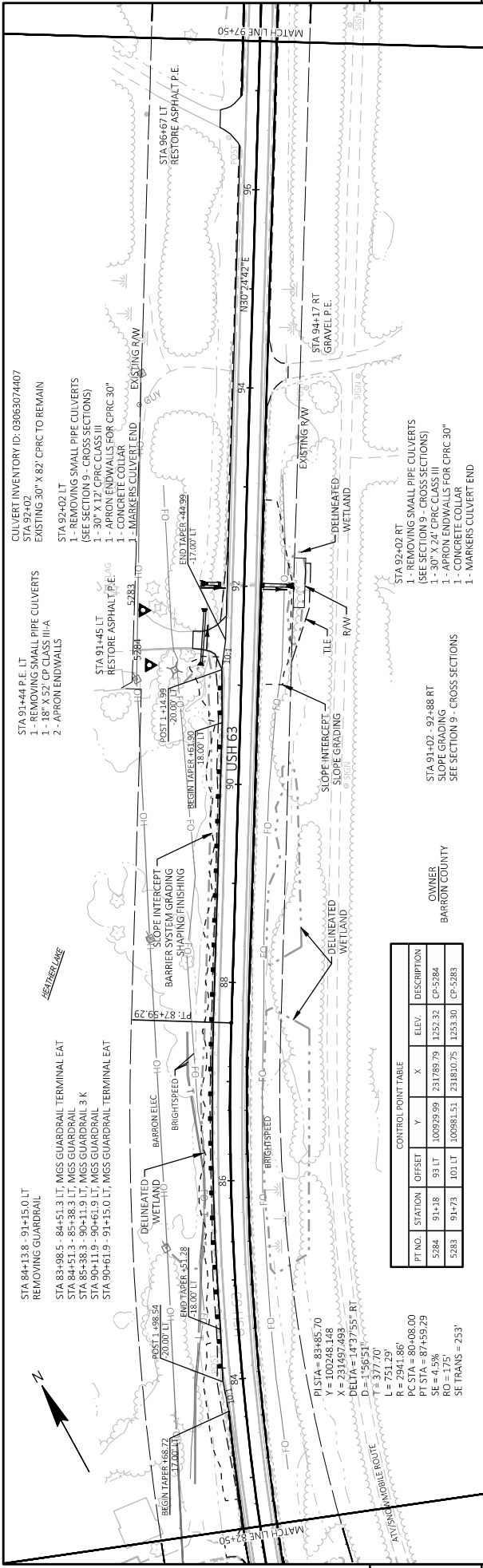


PT NO.	STATION	OFFSET	CONTROL POINT TABLE		ELEV.	DESCRIPTION
			Y	X		
30	57+11	27 LT	97739.40	236607.45	1275.07	CP-30 SET 5/8" X 24 REBAR WITH CEC CONTROL CAP
60001	61+28	30 RT	98078.87	230862.19	1263.52	CP-60001

PT NO.	STATION	OFFSET	CONTROL POINT TABLE		ELEV.	DESCRIPTION
			Y	X		
5426	68+59	20 LT	98784.01	231062.96	1257.21	CP-5426
5427	68+97	19 LT	98820.65	231074.42	1257.83	CP-5427
29	79+18	31 LT	99806.24	231340.76	1256.20	CP-29 SET 5/8" X 24 REBAR WITH CEC CONTROL CAP

CULVERT INVENTORY ID: 03063074400
 STA 68+45
 EXISTING 24" X 82" CP RC TO REMAIN
 1 - 24" X 82" UV GRP CIPP LINER
 1 - MARKERS CULVERT END LT
 1 - MARKERS CULVERT END RT

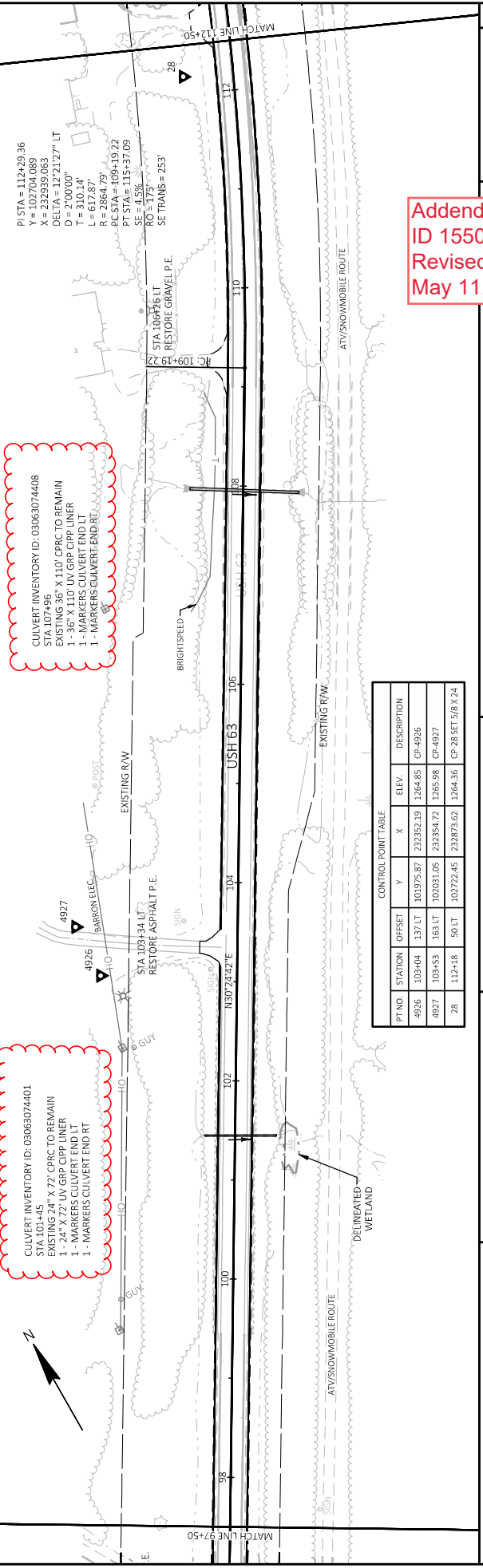
Addendum No. 02
 ID 1550-04-78
 Revised Sheet 73
 May 11, 2026



CONTROL POINT TABLE

PT NO.	STATION	OFFSET	Y	X	ELEV.	DESCRIPTION
5284	91+18	93 LT	100929.98	231789.79	1252.32	CP-5284
5283	91+73	101 LT	100881.51	231810.75	1253.30	CP-5283

PI STA = 83+85.70
 Y = 100248.148
 X = 231497.493
 DELTA = 147°37'55" RT
 D = 1565.1'
 T = 377.70'
 L = 751.29'
 R = 2941.86'
 PC STA = 80+08.00
 PT STA = 87+59.29
 SE = 1.57'
 RO = 175'
 SE TRANS = 253'



CONTROL POINT TABLE

PT NO.	STATION	OFFSET	Y	X	ELEV.	DESCRIPTION
4926	103+04	137 LT	101975.87	232352.19	1264.85	CP-4926
4927	103+53	163 LT	102031.05	232354.72	1265.98	CP-4927
4928	112+18	50 LT	102722.45	232873.62	1264.36	CP-28 SET 5/8 X 3/4

PI STA = 112+29.36
 Y = 102704.863
 X = 232939.863
 DELTA = 127°21'27" LT
 D = 2700.00'
 T = 310.14'
 L = 617.87'
 R = 2864.79'
 PC STA = 109+19.22
 PT STA = 115+37.09
 SE = 4.93'
 RO = 175'
 SE TRANS = 253'

Addendum No. 02
 ID 1550-04-78
 Revised Sheet 74
 May 11, 2026

CULVERT INVENTORY ID: 03063027188
 STA 533+84
 EXISTING 48" X 94" CIRC
 1 - 48" X 94" UV GRP CPP LINER
 2 - MARKERS CULVERT END (1-LT, 1-RT)

CULVERT INVENTORY ID: 03063027189
 STA 533+91
 EXISTING 48" X 94" CIRC
 1 - 48" X 94" UV GRP CPP LINER
 2 - MARKERS CULVERT END (1-LT, 1-RT)

CULVERT INVENTORY ID: 03063027191
 STA 547-00
 EXISTING 60" X 86" CIRC
 1 - REMOVING STRUCTURE

STA 547-07
 1 - 68" X 106" X 74" CIRC HOR. ELLIPTICAL CLASS HE-III, SKEW 24° LHF
 2 - APRON ENDWALLS FOR CIRC HOR. ELLIPTICAL 68" X 106"
 1 - MARKERS CULVERT END LT
 1 - MARKERS CULVERT END RT

STA 539+15 LT
 RESTORE GRAVEL P.E.

STA 539+45 RT
 RESTORE ASPHALT P.E.

CULVERT INVENTORY ID: 03063074557
 STA 547+10
 EXISTING 60" X 86" CIRC
 1 - REMOVING STRUCTURE

STA 545+14.66
 64.5 LT

STA 546+12.1, 63.5 RT
 BUTTED JOINT REQUIRED

STA 546+81 - 546+94 RT
 12.3 X 5' RIPRAP MEDIUM
 W/ GEOTEXTILE TYPE HR

STA 554-47 LT
 RESTORE ASPHALT P.E.

STA 557-92 LT
 RESTORE GRAVEL P.E.

STA 551+43 RT
 RESTORE GRAVEL P.E.

STA 556+62 RT
 RESTORE GRAVEL P.E.

CONTROL POINT TABLE						
PT. NO.	STATION	OFFSET	Y	X	ELEV.	DESCRIPTION
12298	534+39	19 LT	136271.03	257379.63	1285.22	CP-12298
12299	534+59	19 LT	136331.15	257370.85	1284.56	CP-12299
13	544+68	30 LT	137299.66	257374.91	1280.72	CP-13 SET 5/8 X 24

REMOVING CONCRETE
 SURFACE PARTIAL DEPTH

1 SLOPE INTERCEPT
 TEMP. WIDENING AND RESTORATION

OMNIVERS
 THOMAS M. ZAPPA
 AND KELLY S. NELSON

PROJECT NO: 1550-04-78
 HWY: USH 63

COUNTY: BARRON
 PLAN: USH 63
 SHEET: 89

FILE NAME: W:\MWB_PROJECTS\BESIGN\324_US63\BORTD\H8\CD-23\SHEETS\060202_PN-63-3B\T048.DWG
 LAYOUT NAME: 63_PN-17

WISDOT/CADDS SHEET 44

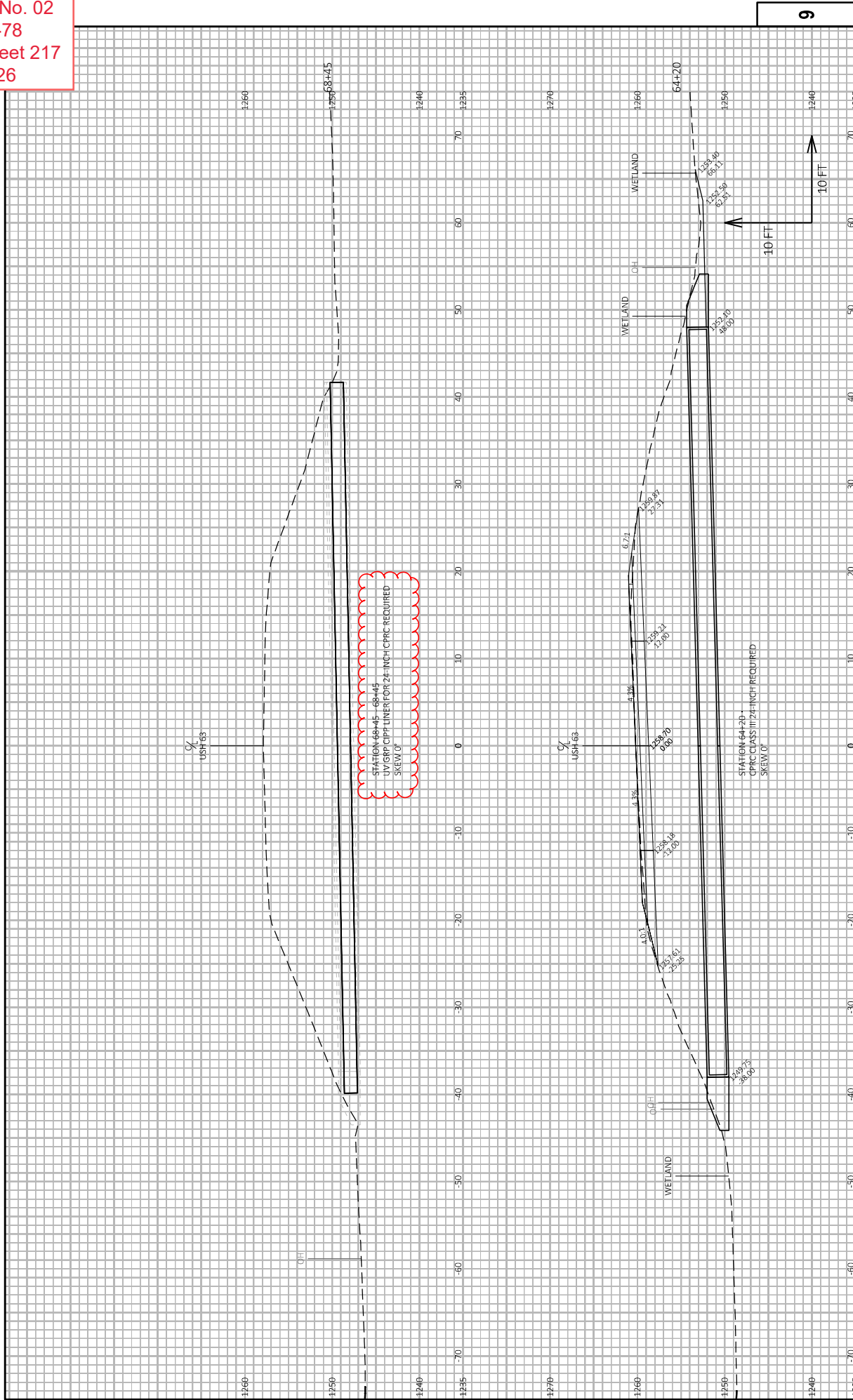
CONTROL POINT TABLE						
PT. NO.	STATION	OFFSET	Y	X	ELEV.	DESCRIPTION
12223	547+71	17 LT	137602.49	257375.38	1280.90	CP-12223
12224	548+30	18 LT	137661.16	257376.37	1280.80	CP-12224

Addendum No. 02
 ID 1550-04-78
 Revised Sheet 89
 May 11, 2026

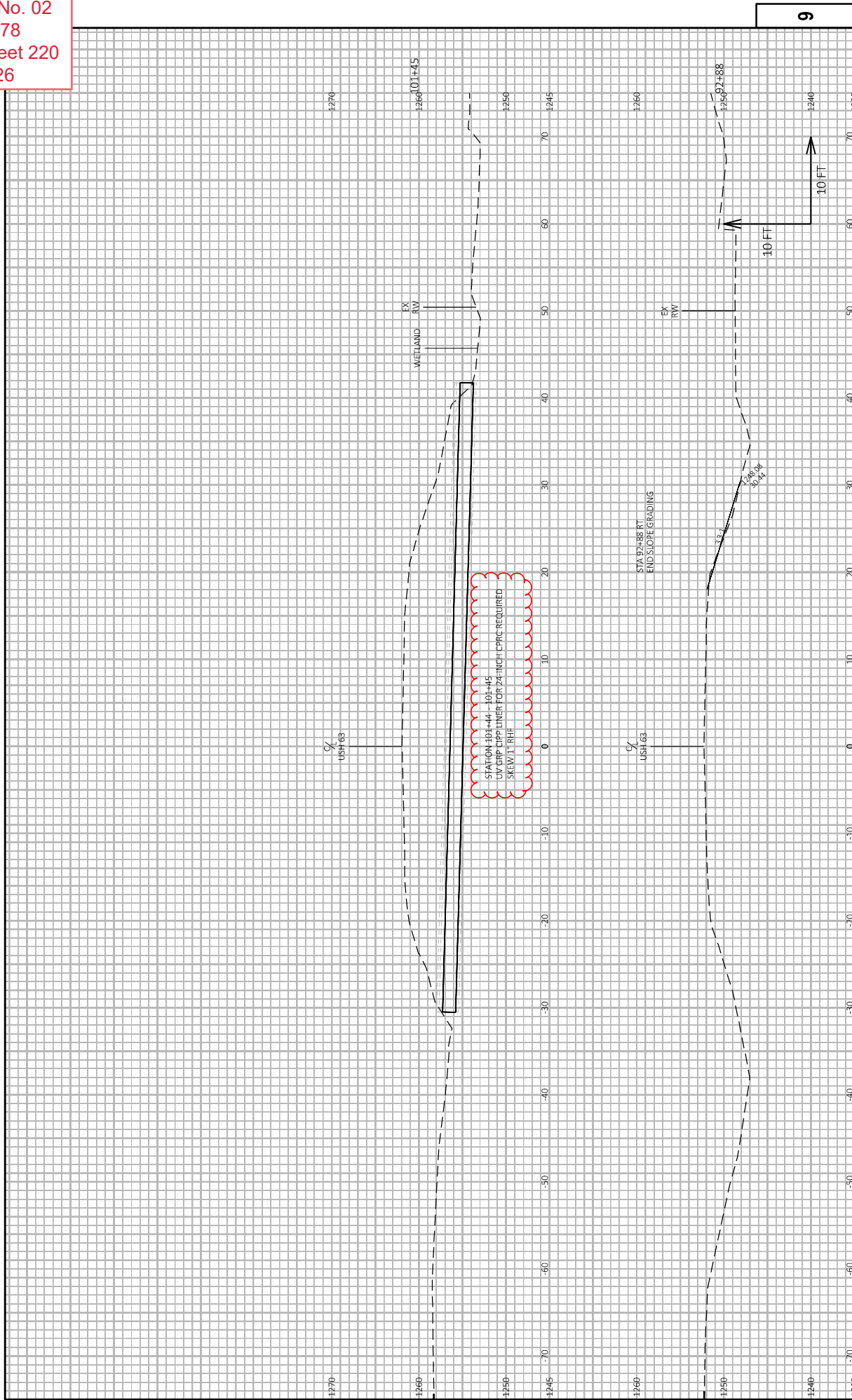
PROJECT NO: 1550-04-78
 HWY: USH 63
 COUNTY: BARRON
 PLAN: USH 63
 SHEET: 89

FILE NAME: W:\MWB_PROJECTS\BESIGN\324_US63\BORTD\H8\CD-23\SHEETS\060202_PN-63-3B\T048.DWG
 LAYOUT NAME: 63_PN-17

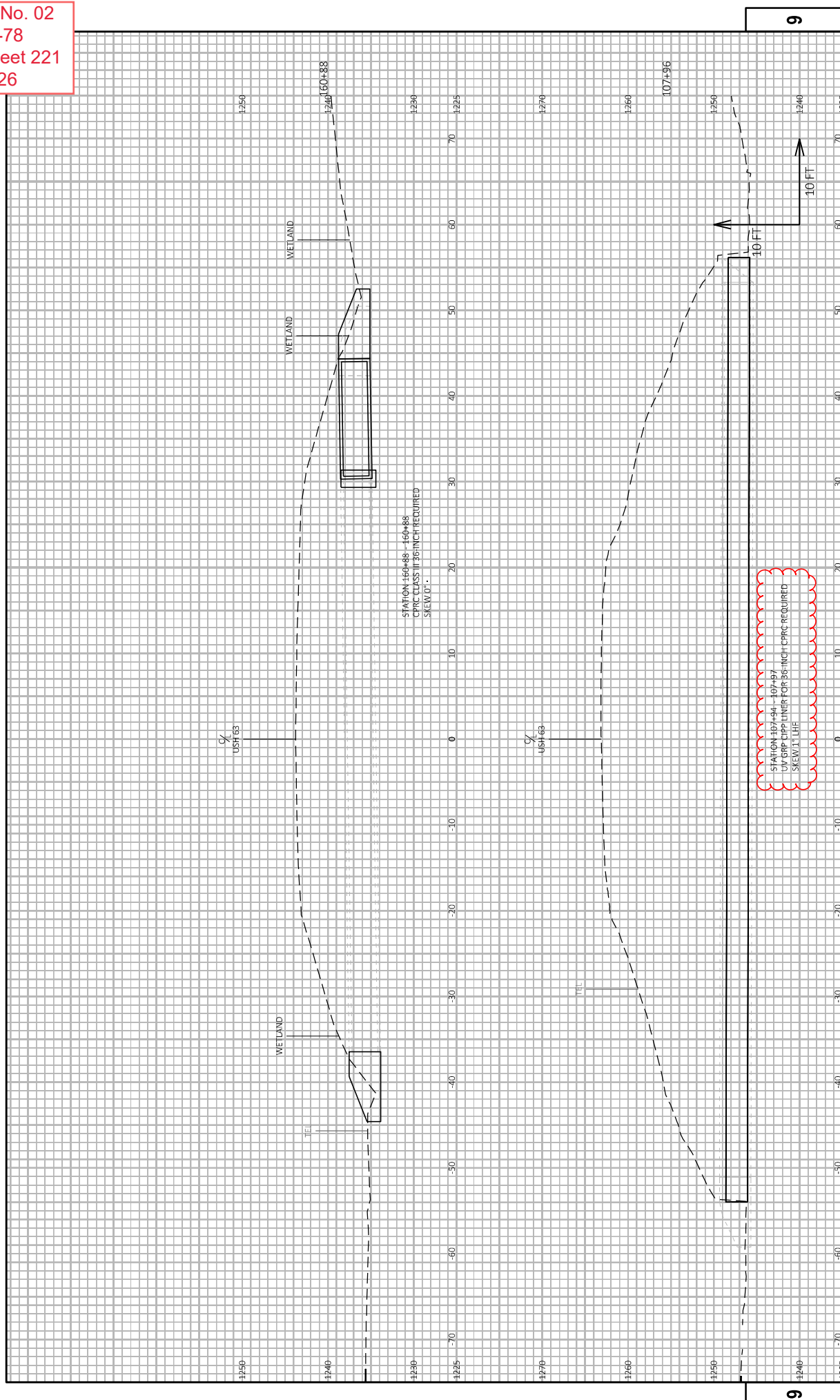
WISDOT/CADDS SHEET 44



PROJECT NO: 1550-04-78 COUNTY: BARRON HWY: USH 63
 SHEET 217
 CROSS SECTIONS: CULVERT REPLACEMENTS AND CULVERT PIPE LINERS
 PLOT BY: GARY T. COLBERT PE
 PLOT NAME: GARY T. COLBERT PE
 PLOT DATE: 5/9/2026 8:10 PM
 FILE NAME: W:\WB\PROJECTS\DESIGN\324_US63-US87\05THH\324-23\SHEETS\090202_AS-CULVERTS\LAYOUT LAYOUT NAME: 63_24-01-Culverts
 WISDOT/CADDS SHEET 49
 PLOT SCALE: 1 IN=10 FT. HORIZ. / 1 IN=10 FT. VERT.

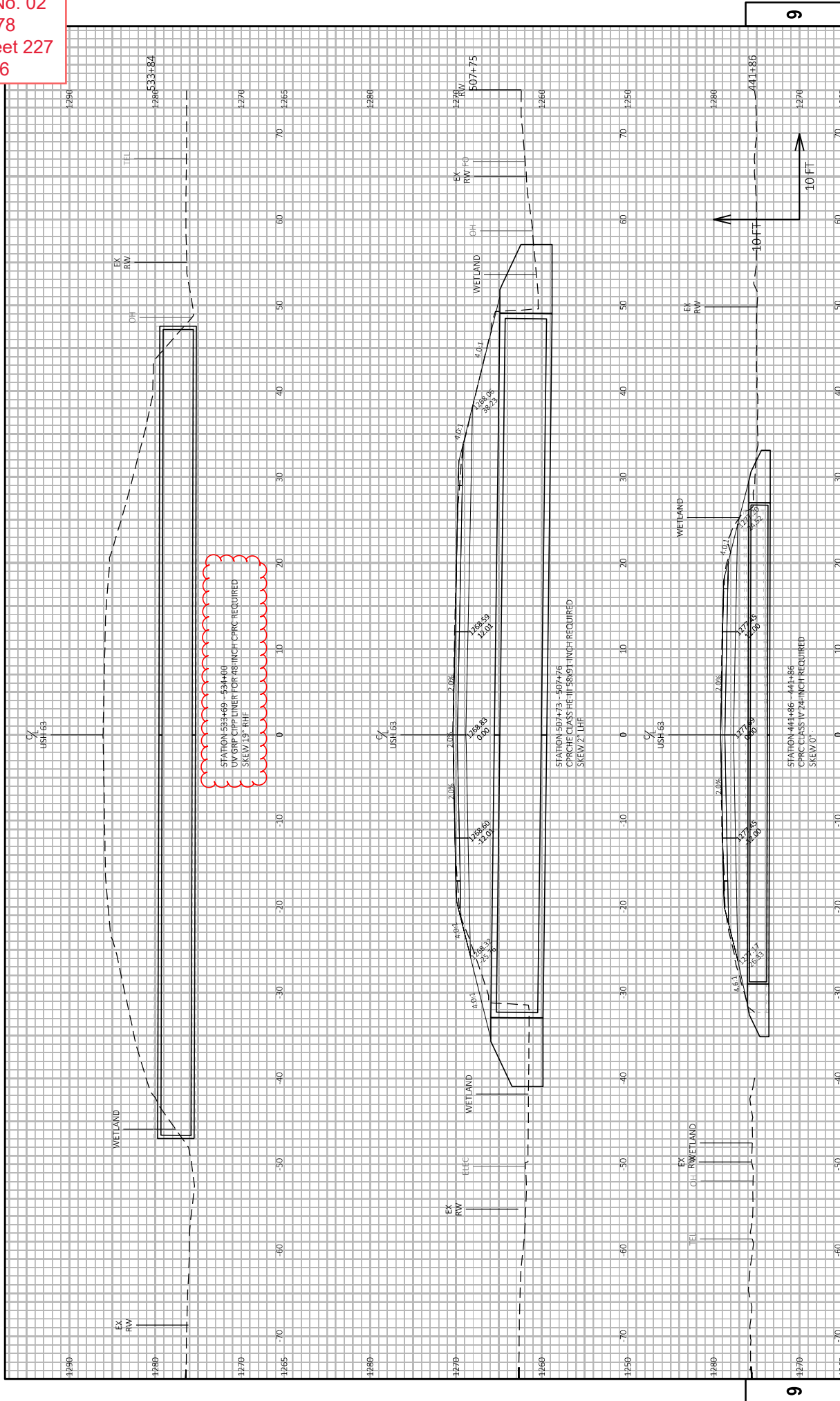


9	220	E
PROJECT NO: 1550-04-78	COUNTY: BARRON	CROSS SECTIONS: CULVERT REPLACEMENTS AND CULVERT PIPE LINERS
HWY: USH 63	PLOT BY: GARY T. COLBERT PE	SHEET 220
FILE NAME: W:\MWB\PROJECTS\DESIGN\324_US63-US87\05TH8\C3D-23\SHEETS\090202_AS-CULVERTS\LAYOUT	PLOT DATE: 5/9/2026 8:10 PM	PLOT SCALE: 1 IN=10 FT HORZ. / 1 IN=10 FT VERT.
LAYOUT NAME: 63_25-04-Culverts	FILE NAME: W65007CADD05 SHEET 49	



STATION 160+88 - 160+88
 CIRC CLASS III 36-INCH REQUIRED
 SKEW 0°

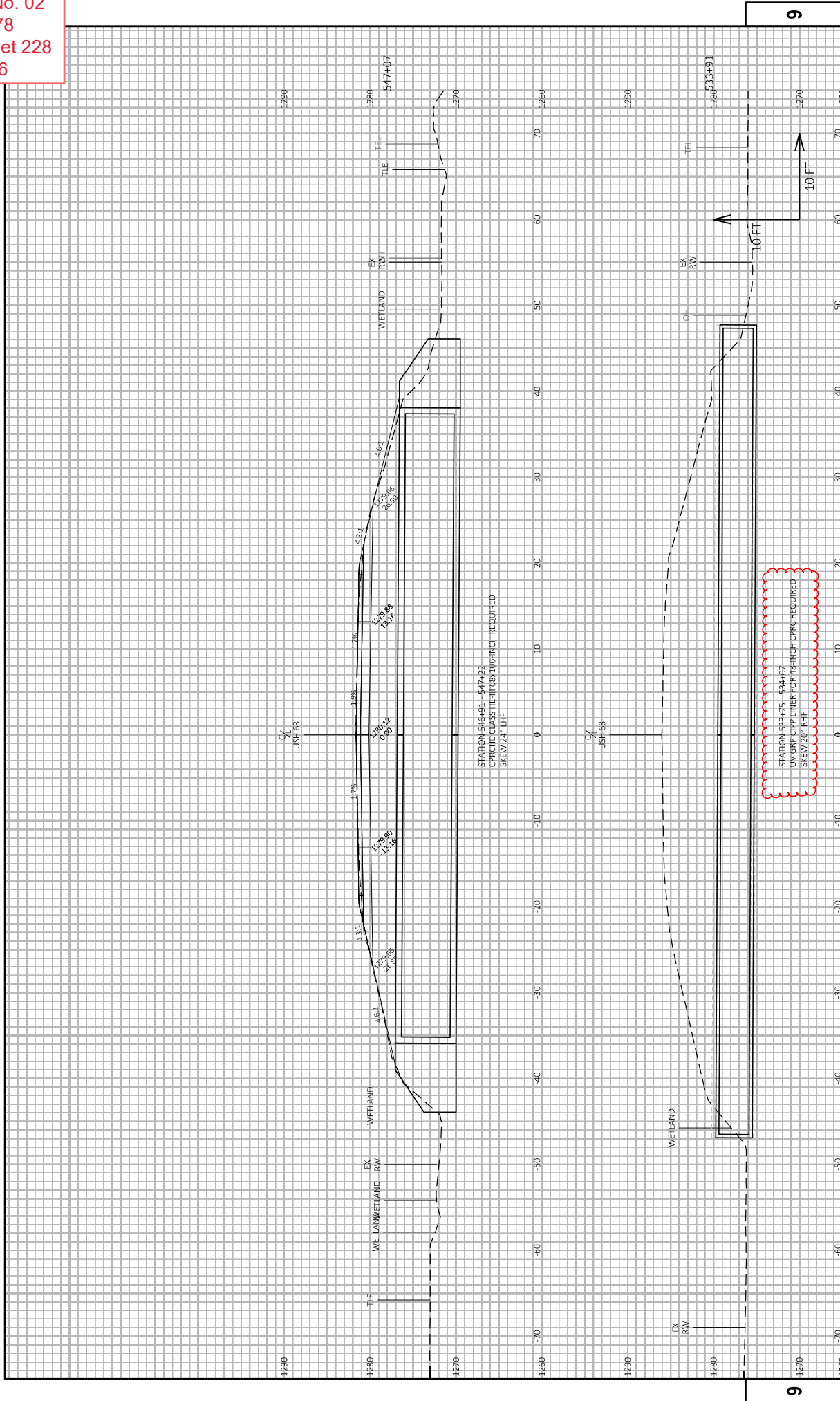
STATION 107+94 - 107+97
 UV GRP CIPP LINER FOR 36-INCH CIRCULAR
 SKEW 11 LHF



STATION 53+69 - 54+80
 CIRCULAR PIPE LINER FOR 48-INCH CPVC REQUIRED
 SKEW 13° RHT

STATION 50+73 - 50+76
 CIRCULAR PIPE LINER FOR 48-INCH CPVC REQUIRED
 SKEW 2° LHT

STATION 44+66 - 44+86
 CIRCULAR PIPE LINER FOR 48-INCH CPVC REQUIRED
 SKEW 0°





Proposal Schedule of Items

Proposal ID: 20260512015 Project(s): 1550-04-78

Federal ID(s): WISC 2026334

SECTION: 0001 Contract Items

Alt Set ID: Alt Mbr ID:

Proposal Line Number	Item ID Description	Approximate Quantity and Units	Unit Price	Bid Amount
0002	201.0105 Clearing	1.000 STA	_____.	_____.
0004	201.0205 Grubbing	1.000 STA	_____.	_____.
0006	203.0100 Removing Small Pipe Culverts	15.000 EACH	_____.	_____.
0008	203.0220 Removing Structure (structure) 01. C-03-67	1.000 EACH	_____.	_____.
0010	203.0220 Removing Structure (structure) 02. Sta. 547+00, 60-Inch CPRC	1.000 EACH	_____.	_____.
0012	203.0220 Removing Structure (structure) 03. Sta. 547+10, 60-Inch CPRC	1.000 EACH	_____.	_____.
0014	204.0100 Removing Concrete Pavement	1,886.000 SY	_____.	_____.
0016	204.0109.S Removing Concrete Surface Partial Depth	1,286.000 SF	_____.	_____.
0018	204.0110 Removing Asphaltic Surface	740.000 SY	_____.	_____.
0020	204.0115 Removing Asphaltic Surface Butt Joints	96.000 SY	_____.	_____.
0022	204.0120 Removing Asphaltic Surface Milling	240,984.000 SY	_____.	_____.
0024	204.0150 Removing Curb & Gutter	185.000 LF	_____.	_____.
0026	204.0165 Removing Guardrail	1,408.000 LF	_____.	_____.
0028	205.0100 Excavation Common	6,169.000 CY	_____.	_____.
0030	208.0100 Borrow	551.000 CY	_____.	_____.



Proposal Schedule of Items

Proposal ID: 20260512015 Project(s): 1550-04-78

Federal ID(s): WISC 2026334

SECTION: 0001 Contract Items

Alt Set ID: Alt Mbr ID:

Proposal Line Number	Item ID Description	Approximate Quantity and Units	Unit Price	Bid Amount
0032	208.1500.S Temporary Lane Shift During Culvert Work	7.000 EACH	_____.	_____.
0034	209.2500 Backfill Granular Grade 2	4,416.000 TON	_____.	_____.
0036	211.0101 Prepare Foundation for Asphaltic Paving (project) 01. 1550-04-78	1.000 EACH	_____.	_____.
0038	211.0400 Prepare Foundation for Asphaltic Shoulders	1,059.000 STA	_____.	_____.
0040	213.0100 Finishing Roadway (project) 01. 1550-04-78	1.000 EACH	_____.	_____.
0042	305.0110 Base Aggregate Dense 3/4-Inch	2,897.000 TON	_____.	_____.
0044	305.0120 Base Aggregate Dense 1 1/4-Inch	4,333.000 TON	_____.	_____.
0046	455.0605 Tack Coat	30,339.000 GAL	_____.	_____.
0048	460.0105.S HMA Percent Within Limits (PWL) Test Strip Volumetrics	2.000 EACH	_____.	_____.
0050	460.0110.S HMA Percent Within Limits (PWL) Test Strip Density	2.000 EACH	_____.	_____.
0052	460.2005 Incentive Density PWL HMA Pavement	34,400.000 DOL	1.00000	34,400.00
0054	460.2007 Incentive Density HMA Pavement Longitudinal Joints	34,820.000 DOL	1.00000	34,820.00
0056	460.2010 Incentive Air Voids HMA Pavement	47,930.000 DOL	1.00000	47,930.00
0058	460.6225 HMA Pavement 5 MT 58-28 S	22,125.000 TON	_____.	_____.



Proposal Schedule of Items

Proposal ID: 20260512015 Project(s): 1550-04-78

Federal ID(s): WISC 2026334

SECTION: 0001 Contract Items

Alt Set ID: Alt Mbr ID:

Proposal Line Number	Item ID Description	Approximate Quantity and Units	Unit Price	Bid Amount
0060	460.9000.S Material Transfer Vehicle	1.000 EACH	_____.	_____.
0062	465.0105 Asphaltic Surface	1,639.000 TON	_____.	_____.
0064	465.0110 Asphaltic Surface Patching	215.000 TON	_____.	_____.
0066	465.0120 Asphaltic Surface Driveways and Field Entrances	108.000 TON	_____.	_____.
0068	465.0125 Asphaltic Surface Temporary	425.000 TON	_____.	_____.
0070	465.0315 Asphaltic Flumes	11.000 SY	_____.	_____.
0072	465.0520 Asphaltic Rumble Strips, Shoulder	99,870.000 LF	_____.	_____.
0074	465.0560 Asphaltic Rumble Strips, Centerline	47,674.000 LF	_____.	_____.
0076	490.0100.S Resin Binder High Friction Surface Treatment	6,224.000 SY	_____.	_____.
0078	520.1018 Apron Endwalls for Culvert Pipe 18-Inch	2.000 EACH	_____.	_____.
0080	520.2048 Culvert Pipe Temporary 48-Inch	24.000 LF	_____.	_____.
0082	520.3418 Culvert Pipe Class III-A Non-metal 18-Inch	52.000 LF	_____.	_____.
0084	520.8000 Concrete Collars for Pipe	10.000 EACH	_____.	_____.
0086	520.8700 Cleaning Culvert Pipes	8.000 EACH	_____.	_____.
0096	522.0124 Culvert Pipe Reinforced Concrete Class III 24-Inch	138.000 LF	_____.	_____.



Proposal Schedule of Items

Proposal ID: 20260512015 Project(s): 1550-04-78

Federal ID(s): WISC 2026334

SECTION: 0001 Contract Items

Alt Set ID: Alt Mbr ID:

Proposal Line Number	Item ID Description	Approximate Quantity and Units	Unit Price	Bid Amount
0098	522.0130 Culvert Pipe Reinforced Concrete Class III 30-Inch	56.000 LF	_____.	_____.
0100	522.0136 Culvert Pipe Reinforced Concrete Class III 36-Inch	14.000 LF	_____.	_____.
0102	522.0424 Culvert Pipe Reinforced Concrete Class IV 24-Inch	56.000 LF	_____.	_____.
0104	522.0430 Culvert Pipe Reinforced Concrete Class IV 30-Inch	128.000 LF	_____.	_____.
0106	522.0442 Culvert Pipe Reinforced Concrete Class IV 42-Inch	58.000 LF	_____.	_____.
0108	522.1024 Apron Endwalls for Culvert Pipe Reinforced Concrete 24-Inch	10.000 EACH	_____.	_____.
0110	522.1030 Apron Endwalls for Culvert Pipe Reinforced Concrete 30-Inch	7.000 EACH	_____.	_____.
0112	522.1036 Apron Endwalls for Culvert Pipe Reinforced Concrete 36-Inch	1.000 EACH	_____.	_____.
0114	522.1042 Apron Endwalls for Culvert Pipe Reinforced Concrete 42-Inch	2.000 EACH	_____.	_____.
0116	522.2358 Culvert Pipe Reinforced Concrete Horizontal Elliptical Class HE-III 58x91-Inch	82.000 LF	_____.	_____.
0118	522.2368 Culvert Pipe Reinforced Concrete Horizontal Elliptical Class HE-III 68x106-Inch	74.000 LF	_____.	_____.
0120	522.2658 Apron Endwalls for Culvert Pipe Reinforced Concrete Horizontal Elliptical 58x91-Inch	2.000 EACH	_____.	_____.



Proposal Schedule of Items

Proposal ID: 20260512015 Project(s): 1550-04-78

Federal ID(s): WISC 2026334

SECTION: 0001 Contract Items

Alt Set ID: Alt Mbr ID:

Proposal Line Number	Item ID Description	Approximate Quantity and Units	Unit Price	Bid Amount
0122	522.2668 Apron Endwalls for Culvert Pipe Reinforced Concrete Horizontal Elliptical 68x106-Inch	2.000 EACH	_____.	_____.
0124	601.0411 Concrete Curb & Gutter 30-Inch Type D	30.000 LF	_____.	_____.
0126	601.0557 Concrete Curb & Gutter 6-Inch Sloped 36-Inch Type D	155.000 LF	_____.	_____.
0128	603.8000 Concrete Barrier Temporary Precast Delivered	1,550.000 LF	_____.	_____.
0130	603.8125 Concrete Barrier Temporary Precast Installed	2,800.000 LF	_____.	_____.
0132	603.8500 Anchoring Concrete Barrier Temporary Precast	1,400.000 LF	_____.	_____.
0134	606.0050 Riprap Extra-Light	11.000 CY	_____.	_____.
0136	606.0100 Riprap Light	6.000 CY	_____.	_____.
0138	606.0200 Riprap Medium	9.000 CY	_____.	_____.
0140	611.8110 Adjusting Manhole Covers	1.000 EACH	_____.	_____.
0142	611.8120.S Cover Plates Temporary	1.000 EACH	_____.	_____.
0144	614.0010 Barrier System Grading Shaping Finishing	2.000 EACH	_____.	_____.
0146	614.0397 Guardrail Mow Strip Emulsified Asphalt	270.000 SY	_____.	_____.
0148	614.0905 Crash Cushions Temporary	7.000 EACH	_____.	_____.



Proposal Schedule of Items

Proposal ID: 20260512015 Project(s): 1550-04-78

Federal ID(s): WISC 2026334

SECTION: 0001 Contract Items

Alt Set ID: Alt Mbr ID:

Proposal Line Number	Item ID Description	Approximate Quantity and Units	Unit Price	Bid Amount
0150	614.2300 MGS Guardrail 3	375.000 LF	_____	_____
0152	614.2330 MGS Guardrail 3 K	1,050.000 LF	_____	_____
0154	614.2610 MGS Guardrail Terminal EAT	4.000 EACH	_____	_____
0156	618.0100 Maintenance and Repair of Haul Roads (project) 01. 1550-04-78	1.000 EACH	_____	_____
0158	619.1000 Mobilization	1.000 EACH	_____	_____
0160	624.0100 Water	64.000 MGAL	_____	_____
0162	625.0100 Topsoil	9,119.000 SY	_____	_____
0164	627.0200 Mulching	5,442.000 SY	_____	_____
0166	628.1504 Silt Fence	3,811.000 LF	_____	_____
0168	628.1520 Silt Fence Maintenance	3,811.000 LF	_____	_____
0170	628.1530.S Silt Fence Heavy Duty	964.000 LF	_____	_____
0172	628.1535.S Silt Fence Heavy Duty Maintenance	964.000 LF	_____	_____
0174	628.1905 Mobilizations Erosion Control	10.000 EACH	_____	_____
0176	628.1910 Mobilizations Emergency Erosion Control	5.000 EACH	_____	_____
0178	628.2008 Erosion Mat Urban Class I Type B	4,928.000 SY	_____	_____
0180	628.2037 Erosion Mat Class III Type C	460.000 SY	_____	_____



Proposal Schedule of Items

Proposal ID: 20260512015 Project(s): 1550-04-78

Federal ID(s): WISC 2026334

SECTION: 0001 Contract Items

Alt Set ID: Alt Mbr ID:

Proposal Line Number	Item ID Description	Approximate Quantity and Units	Unit Price	Bid Amount
0182	628.7504 Temporary Ditch Checks	100.000 LF	_____.	_____.
0184	628.7555 Culvert Pipe Checks	106.000 EACH	_____.	_____.
0186	629.0210 Fertilizer Type B	4.000 CWT	_____.	_____.
0188	630.0120 Seeding Mixture No. 20	394.000 LB	_____.	_____.
0190	630.0200 Seeding Temporary	190.000 LB	_____.	_____.
0192	630.0500 Seed Water	245.000 MGAL	_____.	_____.
0194	633.0200 Delineators Flexible	72.000 EACH	_____.	_____.
0196	633.5200 Markers Culvert End	72.000 EACH	_____.	_____.
0198	638.2102 Moving Signs Type II	2.000 EACH	_____.	_____.
0200	642.5001 Field Office Type B	1.000 EACH	_____.	_____.
0202	643.0300 Traffic Control Drums	5,504.000 DAY	_____.	_____.
0204	643.0420 Traffic Control Barricades Type III	304.000 DAY	_____.	_____.
0206	643.0705 Traffic Control Warning Lights Type A	342.000 DAY	_____.	_____.
0208	643.0715 Traffic Control Warning Lights Type C	1,881.000 DAY	_____.	_____.
0210	643.0900 Traffic Control Signs	9,005.000 DAY	_____.	_____.
0212	643.1000 Traffic Control Signs Fixed Message	54.000 SF	_____.	_____.



Proposal Schedule of Items

Proposal ID: 20260512015 Project(s): 1550-04-78

Federal ID(s): WISC 2026334

SECTION: 0001 Contract Items

Alt Set ID: Alt Mbr ID:

Proposal Line Number	Item ID Description	Approximate Quantity and Units	Unit Price	Bid Amount
0214	643.3165 Temporary Marking Line Paint 6-Inch	221,925.000 LF	_____.	_____.
0216	643.3170 Temporary Marking Line Epoxy 6-Inch	100,401.000 LF	_____.	_____.
0218	643.3805 Temporary Marking Stop Line Paint 18-Inch	48.000 LF	_____.	_____.
0220	643.5000 Traffic Control	1.000 EACH	_____.	_____.
0222	645.0120 Geotextile Type HR	28.000 SY	_____.	_____.
0224	645.0130 Geotextile Type R	69.000 SY	_____.	_____.
0226	646.2040 Marking Line Grooved Wet Ref Epoxy 6-Inch	211,842.000 LF	_____.	_____.
0228	646.4040 Marking Line Grooved Wet Ref Epoxy 10-Inch	1,335.000 LF	_____.	_____.
0230	646.7120 Marking Diagonal Epoxy 12-Inch	1,450.000 LF	_____.	_____.
0232	646.9002 Marking Removal Line 6-Inch	4,108.000 LF	_____.	_____.
0234	648.0100 Locating No-Passing Zones	10.700 MI	_____.	_____.
0236	650.4500 Construction Staking Subgrade	2,719.000 LF	_____.	_____.
0238	650.5000 Construction Staking Base	2,719.000 LF	_____.	_____.
0240	650.6000 Construction Staking Pipe Culverts	14.000 EACH	_____.	_____.
0242	650.8000 Construction Staking Resurfacing Reference	56,681.000 LF	_____.	_____.



Proposal Schedule of Items

Proposal ID: 20260512015 Project(s): 1550-04-78

Federal ID(s): WISC 2026334

SECTION: 0001 Contract Items

Alt Set ID: Alt Mbr ID:

Proposal Line Number	Item ID Description	Approximate Quantity and Units	Unit Price	Bid Amount
0244	650.9911 Construction Staking Supplemental Control (project) 01. 1550-04-78	1.000 EACH	_____	_____
0246	650.9920 Construction Staking Slope Stakes	1,955.000 LF	_____	_____
0248	661.0101 Temporary Traffic Signals for Bridges (structure) 01. Sta. 507+75 Culvert C-03-687	1.000 EACH	_____	_____
0250	661.0101 Temporary Traffic Signals for Bridges (structure) 02. Sta. 547+07 Culvert Replacement	1.000 EACH	_____	_____
0252	690.0150 Sawing Asphalt	1,241.000 LF	_____	_____
0254	690.0250 Sawing Concrete	303.000 LF	_____	_____
0256	740.0440 Incentive IRI Ride	42,940.000 DOL	1.00000	42,940.00
0258	999.2005.S Maintaining Bird Deterrent System (station) 01. Sta. 507+75 Culvert C-03-687	1.000 EACH	_____	_____
0260	ASP.1T0A On-the-Job Training Apprentice at \$5.00/HR	2,500.000 HRS	5.00000	12,500.00
0262	ASP.1T0G On-the-Job Training Graduate at \$5.00/HR	2,000.000 HRS	5.00000	10,000.00
0264	SPV.0090 Special 01. Ditch Cleaning	50.000 LF	_____	_____
0266	460.6224 HMA Pavement 4 MT 58-28 S	25,732.000 TON	_____	_____
0268	SPV.0090 Special 02. UV GRP CIPP Liners 24-Inch	154.000 LF	_____	_____
0270	SPV.0090 Special 03. UV GRP CIPP Liners 36-Inch	110.000 LF	_____	_____



Proposal Schedule of Items

Proposal ID: 20260512015 Project(s): 1550-04-78

Federal ID(s): WISC 2026334

SECTION: 0001 Contract Items

Alt Set ID: Alt Mbr ID:

Proposal Line Number	Item ID Description	Approximate Quantity and Units	Unit Price	Bid Amount
0272	SPV.0090 Special 04. UV GRP CIPP Liners 48-Inch	188.000 LF	_____.	_____.
Section: 0001			Total:	_____.
			Total Bid:	_____.