



Wisconsin Department of Transportation

May 6, 2026

Division of Transportation Systems Development

Bureau of Project Development
4822 Madison Yards Way, 4th Floor South
Madison, WI 53705

Telephone: (608) 266-1631
Facsimile (FAX): (608) 266-8459

NOTICE TO ALL CONTRACTORS:

**Proposal #11: 1130-73-71
Oshkosh – Green Bay
USH 45 – IH 43
IH 41
Brown & Winnebago Counties**

Letting of May 12, 2026

This is Addendum No. 01, which provides for the following:

Schedule of Items:

Revised Bid Item Quantities					
Bid Item	Item Description	Unit	Proposal Total Prior to Addendum	Proposal Quantity Change (-)	Proposal Total After Addendum
646.9000	Marking Removal Line 4-Inch	LF	12,161	-1,149	11,012

Added Bid Item Quantities					
Bid Item	Item Description	Unit	Proposal Total Prior to Addendum	Quantity Added	Proposal Total After Addendum
646.4020	Marking Line Epoxy 10-Inch	LF	0	1,064	1,064
646.9055	Marking Removal Line Grooved Contrast Permanent Tape 4-Inch	LF	0	85	85
646.9155	Marking Removal Line Grooved Contrast Permanent Tape 8-Inch	LF	0	1,064	1,064

Plan Sheets:

Revised Plan Sheets	
Plan Sheet	Plan Sheet Title (brief description of changes to sheet)
6-9, 14, 17	Traffic Control - Replace locations of Marking Removal Line 4-Inch with added removal items: Marking Removal Line Grooved Contrast Permanent Tape 4-Inch and 8-Inch
33	Miscellaneous Quantities - Revise quantities to replace Marking locations of Removal Line 4-Inch with Marking Removal Line Grooved Contrast Permanent Tape 4-Inch and 8-Inch. Add Marking Line Epoxy 10-Inch to replace locations of 8-Inch removal.

Schedule of Items

Attached, dated May 7, 2026, are the revised Schedule of Items Page 3.

Plan Sheets

The following 8½ x 11-inch sheets are attached and made part of the plans for this proposal:

Revised: 6 - 9, 14, 17, and 33

The responsibility for notifying potential subcontractors and suppliers of these changes remains with the prime contractor.

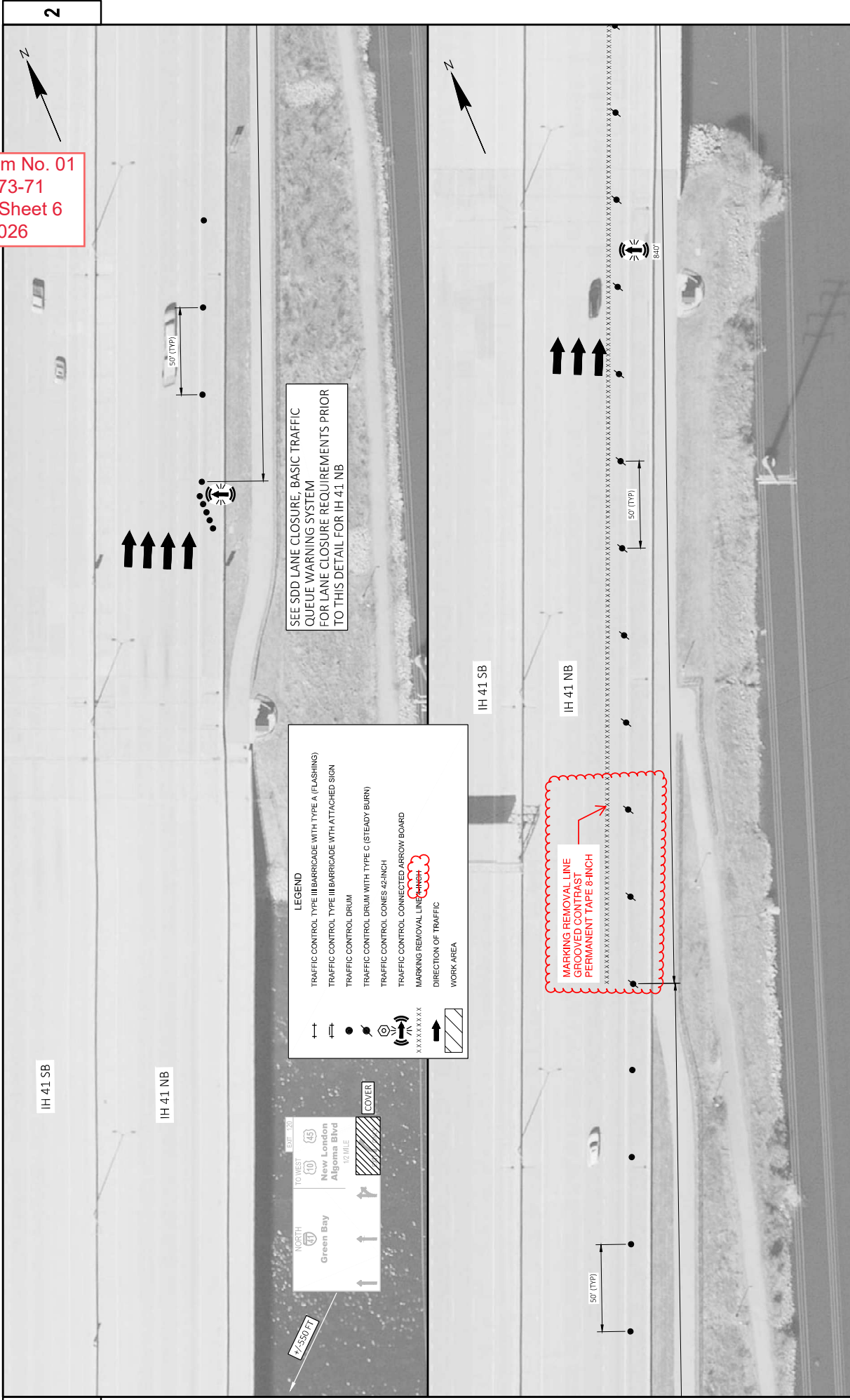
Sincerely,

Mike Coleman

Proposal Development Specialist
Proposal Management Section

END OF ADDENDUM

Addendum No. 01
 ID 1130-73-71
 Revised Sheet 6
 May 7, 2026



2

2

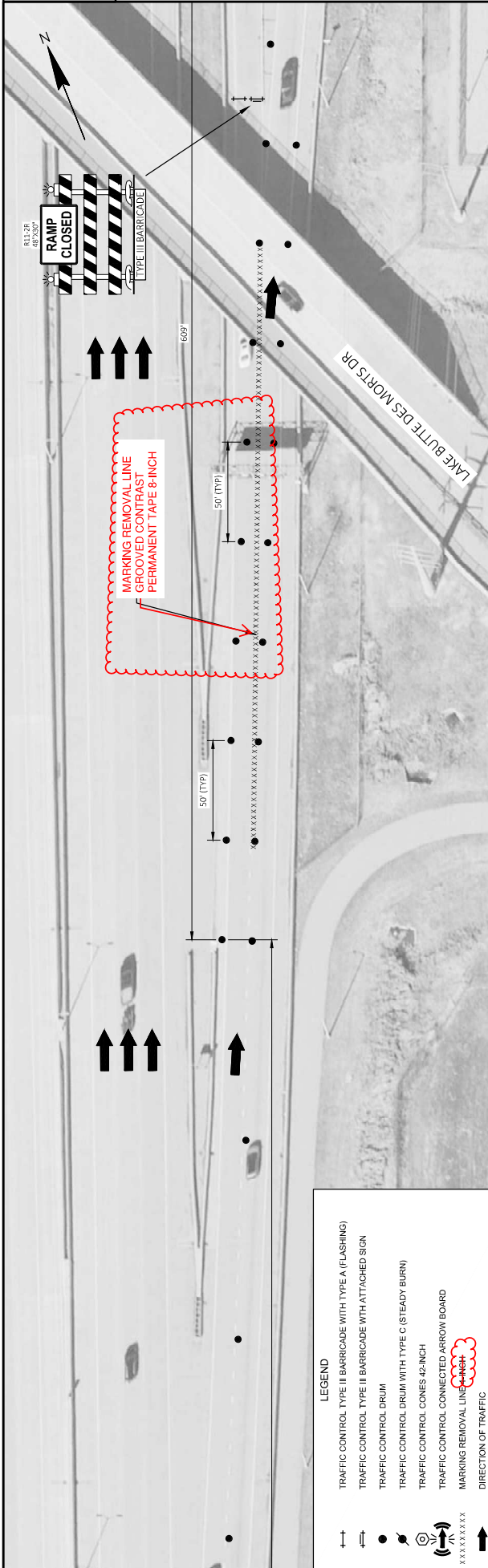
Addendum No. 01
 ID 1130-73-71
 Revised Sheet 7
 May 7, 2026



LEGEND

- TRAFFIC CONTROL TYPE III BARRICADE WITH TYPE A (FLASHING)
- TRAFFIC CONTROL TYPE III BARRICADE WITH ATTACHED SIGN
- TRAFFIC CONTROL DRUM
- TRAFFIC CONTROL DRUM WITH TYPE C (STEADY BURN)
- TRAFFIC CONTROL CONES 42-INCH
- TRAFFIC CONTROL CONNECTED ARROW BOARD
- MARKING REMOVAL LINE 8-INCH
- DIRECTION OF TRAFFIC
- WORK AREA

TO WEST
 NORTH
 Green Bay
 New London
 Algoma Blvd
 1/2 MILE
 COVER



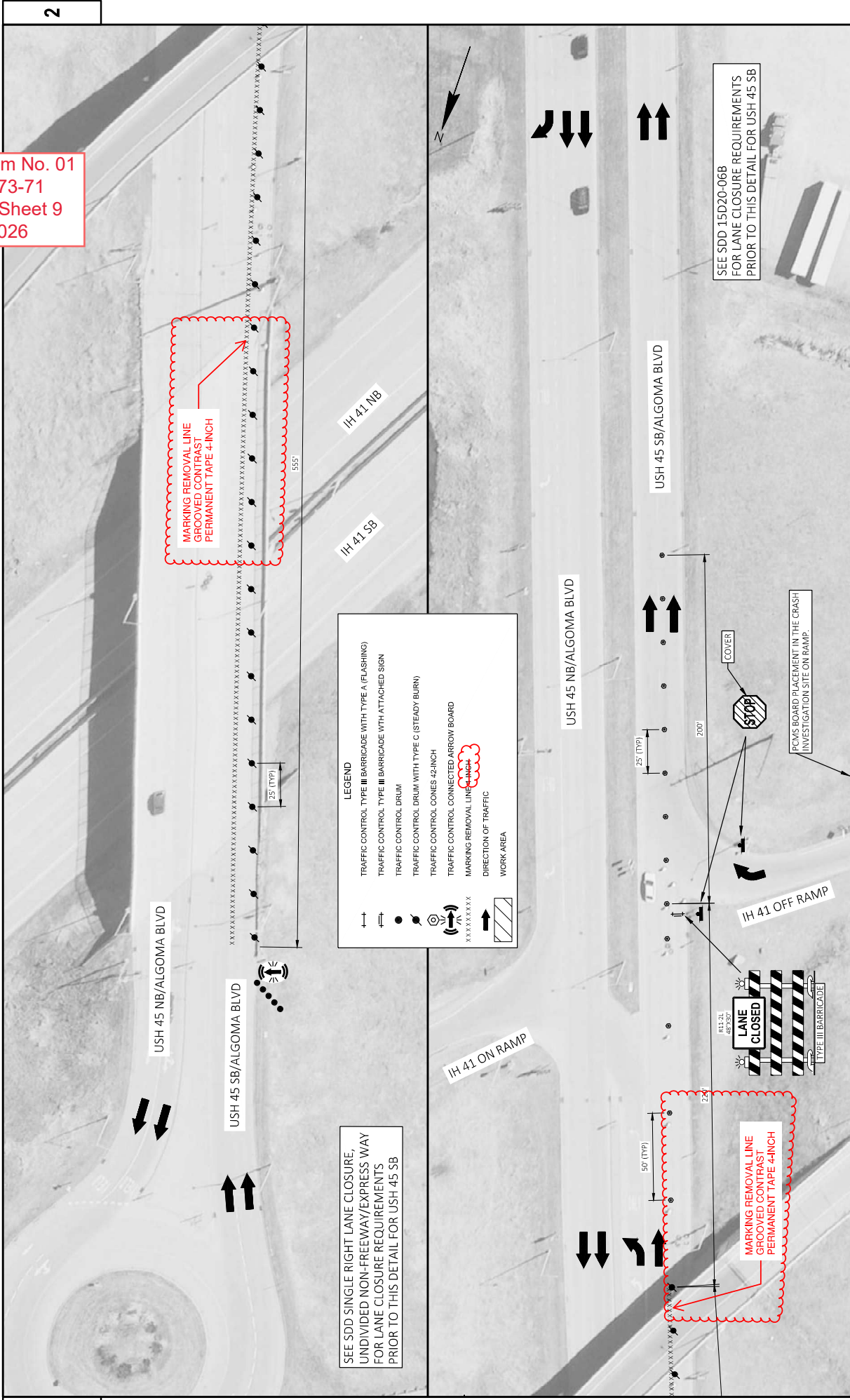
LEGEND

- ↑↑↑↑↑ TRAFFIC CONTROL TYPE III BARRICADE WITH TYPE A (FLASHING)
- ↑↑↑↑↑ TRAFFIC CONTROL TYPE III BARRICADE WITH ATTACHED SIGN
- ↑↑↑↑↑ TRAFFIC CONTROL DRUM
- ↑↑↑↑↑ TRAFFIC CONTROL DRUM WITH TYPE C (STEADY BURN)
- ↑↑↑↑↑ TRAFFIC CONTROL CONES 42-INCH
- ↑↑↑↑↑ MARKING REMOVAL LINE
- ↑↑↑↑↑ DIRECTION OF TRAFFIC
- ▨ WORK AREA

Addendum No. 01
 ID 1130-73-71
 Revised Sheet 8
 May 7, 2026



Addendum No. 01
 ID 1130-73-71
 Revised Sheet 9
 May 7, 2026



MARKING REMOVAL LINE
 GROOVED CONTRAST
 PERMANENT TAPE 4-INCH

SEE SDD SINGLE RIGHT LANE CLOSURE,
 UNDIVIDED NON-FREEWAY/EXPRESS WAY
 FOR LANE CLOSURE REQUIREMENTS
 PRIOR TO THIS DETAIL FOR USH 45 SB

LEGEND

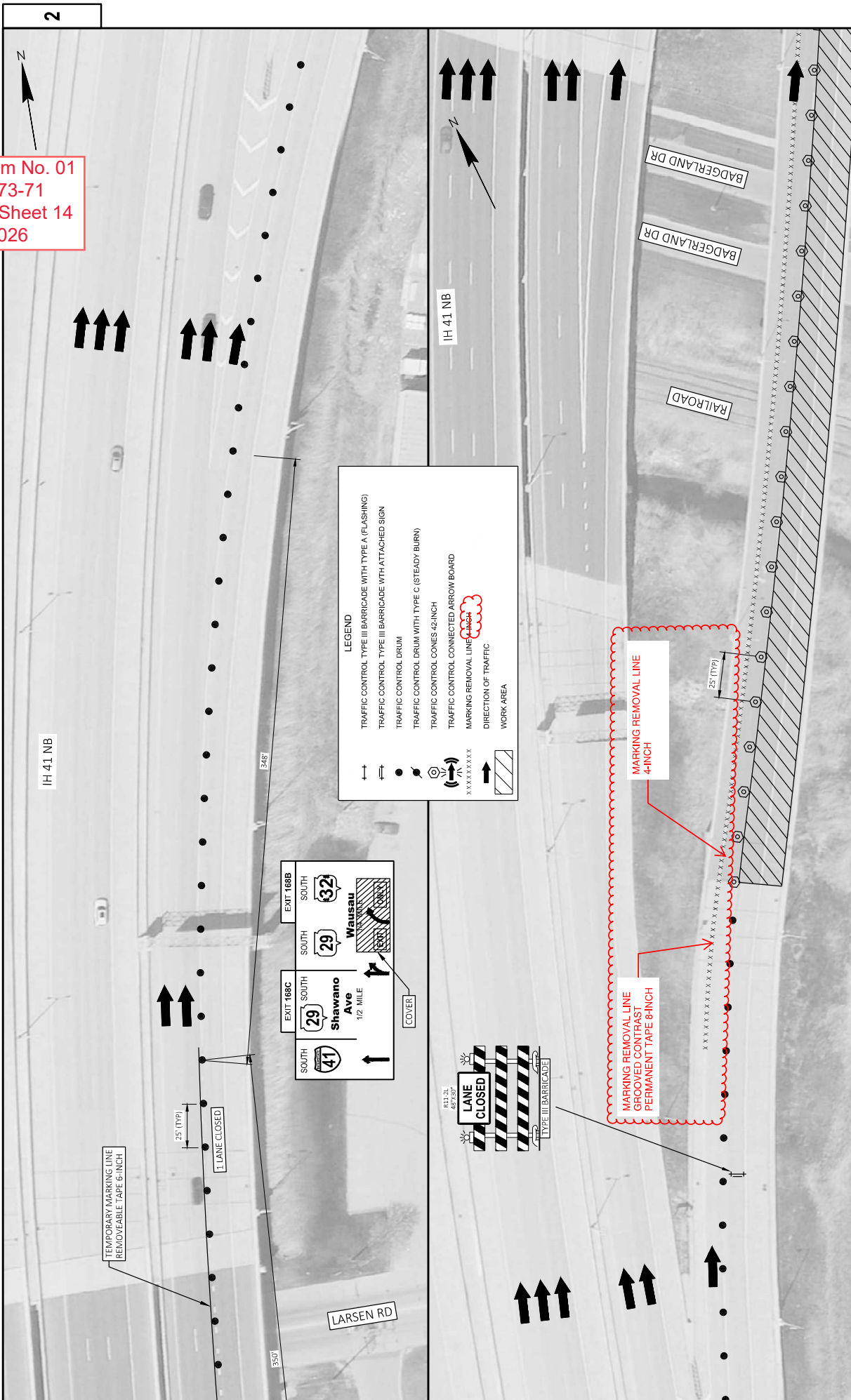
- TRAFFIC CONTROL TYPE III BARRICADE WITH TYPE A (FLASHING)
- TRAFFIC CONTROL TYPE III BARRICADE WITH ATTACHED SIGN
- TRAFFIC CONTROL DRUM
- TRAFFIC CONTROL DRUM WITH TYPE C (STEADY BURN)
- TRAFFIC CONTROL CONES 42-INCH
- TRAFFIC CONTROL CONNECTED ARROW BOARD
- MARKING REMOVAL LINE 4-INCH
- DIRECTION OF TRAFFIC
- WORK AREA

SEE SDD 15D20-06B
 FOR LANE CLOSURE REQUIREMENTS
 PRIOR TO THIS DETAIL FOR USH 45 SB

MARKING REMOVAL LINE
 GROOVED CONTRAST
 PERMANENT TAPE 4-INCH

PCWS BOARD PLACEMENT IN THE CRASH
 INVESTIGATION SITE ON RAMP.

Addendum No. 01
 ID 1130-73-71
 Revised Sheet 14
 May 7, 2026



LEGEND

- TRAFFIC CONTROL TYPE III BARRICADE WITH TYPE A (FLASHING)
- TRAFFIC CONTROL TYPE III BARRICADE WITH ATTACHED SIGN
- TRAFFIC CONTROL DRUM
- TRAFFIC CONTROL DRUM WITH TYPE C (STEADY BURN)
- TRAFFIC CONTROL CONES 42-INCH
- TRAFFIC CONTROL CONNECTED ARROW BOARD
- MARKING REMOVAL LINE 4-INCH
- DIRECTION OF TRAFFIC
- WORK AREA

EXIT 168C SOUTH
 29 Shawano Ave
 1/2 MILE

EXIT 168B SOUTH
 32 Wausau

COVER

R11-2L
 457x307

LANE CLOSED

TYPE III BARRICADE

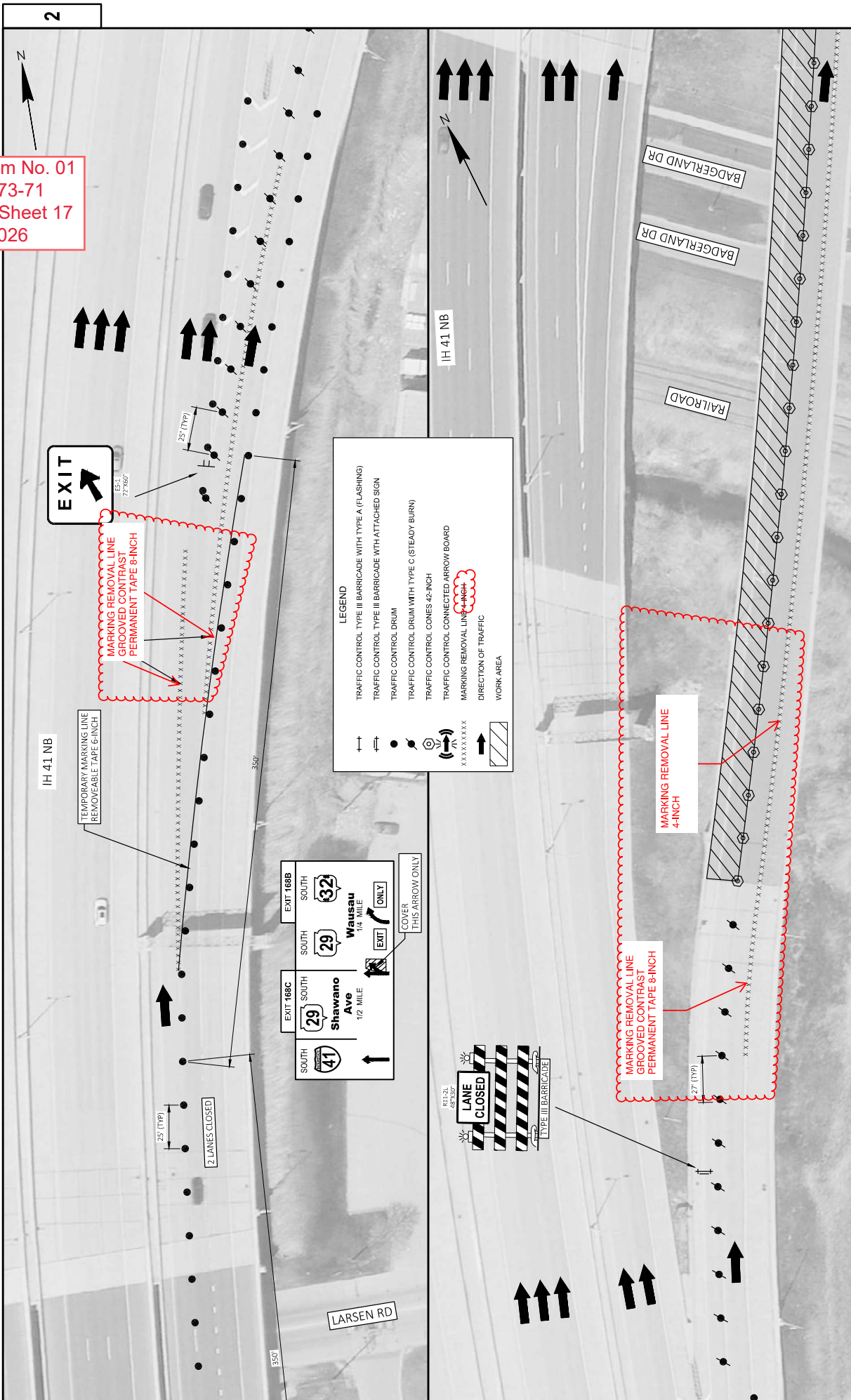
MARKING REMOVAL LINE
 GROOVED CONTRAST
 PERMANENT TAPE 8-INCH

MARKING REMOVAL LINE
 4-INCH

2

2

Addendum No. 01
 ID 1130-73-71
 Revised Sheet 17
 May 7, 2026



LEGEND

- TRAFFIC CONTROL TYPE III BARRICADE WITH TYPE A (FLASHING)
- TRAFFIC CONTROL TYPE III BARRICADE WITH ATTACHED SIGN
- TRAFFIC CONTROL DRUM
- TRAFFIC CONTROL DRUM WITH TYPE C (STEADY BURN)
- TRAFFIC CONTROL CONES 42-INCH
- TRAFFIC CONTROL CONNECTED ARROW BOARD
- MARKING REMOVAL LINE 4-INCH
- DIRECTION OF TRAFFIC
- WORK AREA

2

2

Addendum No. 01
ID 1130-73-71
Revised Sheet 33
May 7, 2026

TRAFFIC CONTROL DETOUR SUMMARY

STATION	TO	STATION	LOCATION	DAY	TYPE II	COVERING SIGNS	MESSAGE	TRAFFIC CONTROL SIGNS FCMS	REMARKS
628.1905		528.7015	5TH 29 EB - IH 41 NB	710	-	1C8			B-05-588
628.1910		528.7015	IH 41 NB - 5TH 29 WB	540	-	C			B-05-561
628.1910		528.7015	IH 41 NB - 5TH 29 WB	140	-	C			B-70-269
628.1910		528.7015	Mason Street	1,236	2	54			Closure
TOTAL0010				2,626	2	162			28

*QUANTITIES SHOWN ELSEWHERE.
**ALL COVERING SIGN 1 CYCLE ONLY

PAVEMENT MARKING SUMMARY

STATION	TO	STATION	LOCATION	MARKING LINE	REMOVAL LINE	CONTRAST	PERMANENT	APES-INCH	REMARKS
643.3165		643.3180	5TH 29 EB - IH 41 NB	WHITE	YELLOW				B-05-558 - STAGE 1
643.3165		643.3180	IH 41 NB - 5TH 29 WB	2,118	2,118				B-05-558 - STRUCTURE
643.3165		643.3180	IH 41 NB - 5TH 29 WB	880	880				B-05-560 - STAGE 1
643.3165		643.3180	IH 41 NB - 5TH 29 WB	4,078	3,348	2,778			B-05-560 - STAGE 2
643.3165		643.3180	IH 41 NB - 5TH 29 WB			1,456			B-05-561 - STAGE 1
643.3165		643.3180	IH 41 NB - 5TH 29 WB		374				B-05-561 - STRUCTURE
643.3165		643.3180	IH 41 NB - 5TH 29 WB	880	569				B-05-571 - STAGE 1
643.3165		643.3180	IH 41 NB - 5TH 29 WB	3,224	100				B-05-571 - STAGE 2
643.3165		643.3180	IH 43 SB - IH 41 SB OVER IH 41	880	2,539				B-05-578 - STAGE 1
643.3165		643.3180	IH 43 SB - IH 41 SB OVER IH 41	4,874	3,994				B-05-578 - STAGE 2
643.3165		643.3180	IH 43 NB - IH 41 NB	880	100				B-05-579 - STAGE 1
643.3165		643.3180	IH 43 NB - IH 41 NB	3,095	2,185	4,189			B-05-579 - STAGE 2
643.3165		643.3180	USH 41 NB TO USH 45 WB	780	195				B-70-269 - STAGE 1
643.3165		643.3180	Mason Street	1,216	1216				B-70-269 - STRUCTURE
643.3165		643.3180	Algebra Blvd						SET LANE CLOSURE
TOTAL				135	270	50	85		1,064
TOTAL				9,525	19,811	1,064	11,012	85	1,064

*TEMPORARY MARKING LINE PAINT WILL NOT BE REQUIRED
ALONG THE 16-FOOT WORKZONE AREA.
**PERMANENT PAVEMENT MARKING SHALL BE DONE AT ONCE,
BEFORE OPENING EACH INDIVIDUAL STRUCTURE.

EROSION CONTROL SUMMARY

STATION	TO	STATION	LOCATION	MOBILIZATION CONTROL	EROSION CONTROL	PROTECTION	REMARKS
813-34.90		834-51.90	5TH 29 EB - IH 41 NB	1	1	11	B-05-658
1074+01.15		1100+79.15	IH 41 NB - 5TH 29 WB	1	1	12	B-05-660
1096+24.41		1216+47.00	IH 41 NB - 5TH 29 WB	1	1	1	B-05-661
1173+05.83		1196+49.50	IH 41 NB - IH 43 SB	1	1	12	B-05-671
1179+87.75		1216+52.00	IH 43 NB - IH 41 SB	1	1	25	B-05-678
1187+31.83		1209+18.08	IH 43 NB - IH 41 SB	1	1	9	B-05-679
54+AF+61.20		66+AF+8.95	USH 41 NB TO USH 45 WB	1	1	5	B-70-269
TOTAL0010				7	7	75	

PROJECT NO: 1130-73-71 HWY: IH 41 COUNTY: BROWN & WINNEBAGO

FILE NAME: N:\PDS\CD\11307300\SHEETPLAN\03201-MQ-ADDENDUM.DWG

PLANT NAME: 03201-MQ

DATE: 5/6/2026 4:13 PM

DESIGNER: SCHWAB, JILLIAN P

SCALE: 1"=1'

SHEET: 33

PROJECT: WISDOT/CADD/SHEET 42



Proposal Schedule of Items

Proposal ID: 20260512011 Project(s): 1130-73-71

Federal ID(s): N/A

SECTION: 0001 Contract Items

Alt Set ID: Alt Mbr ID:

Proposal Line Number	Item ID Description	Approximate Quantity and Units	Unit Price	Bid Amount
0062	643.1205.S Basic Traffic Queue Warning System	85.000 DAY	_____.	_____.
0064	643.1220 Traffic Control Connected Work Zone Start and End Location Markers	188.000 DAY	_____.	_____.
0066	643.3165 Temporary Marking Line Paint 6-Inch	9,525.000 LF	_____.	_____.
0068	643.3180 Temporary Marking Line Removable Tape 6-Inch	19,811.000 LF	_____.	_____.
0070	643.5000 Traffic Control	1.000 EACH	_____.	_____.
0072	646.2020 Marking Line Epoxy 6-Inch	32,619.000 LF	_____.	_____.
0074	646.9000 Marking Removal Line 4-Inch	11,012.000 LF	_____.	_____.
0076	SPV.0035 Special 01. Rapid Set Deck Repair	7.000 CY	_____.	_____.
0078	SPV.0180 Special 01. Polyester Polymer Concrete Overlay	61,336.000 SY	_____.	_____.
0080	646.4020 Marking Line Epoxy 10-Inch	1,064.000 LF	_____.	_____.
0082	646.9055 Marking Removal Line Grooved Contrast Permanent Tape 4-Inch	85.000 LF	_____.	_____.
0084	646.9155 Marking Removal Line Grooved Contrast Permanent Tape 8-Inch	1,064.000 LF	_____.	_____.

Section: 0001

Total: _____.

Total Bid: _____.