



## Wisconsin Department of Transportation

January 30, 2026

### Division of Transportation Systems Development

Bureau of Project Development  
4822 Madison Yards Way, 4<sup>th</sup> Floor South  
Madison, WI 53705

Telephone: (608) 266-1631  
Facsimile (FAX): (608) 266-8459

### NOTICE TO ALL CONTRACTORS:

**Proposal #24: 1500-49-60**  
**Menasha – Harrison**  
**STH 114 – Fire Lane 7**  
**USH 10**  
**Calumet County**

**1500-49-61**  
**Harrison – Forest Junction**  
**Fire Lane 7 – CTH N**  
**USH 10**  
**Calumet County**

### Letting of February 10, 2026

This is Addendum No. 01, which provides for the following:

#### Special Provisions:

Added Special Provisions	
Article No.	Description
34	Other Projects

#### Schedule of Items:

Revised Bid Item Quantities					
Bid Item	Item Description	Unit	Proposal Total Prior to Addendum	Proposal Quantity Change (-)	Proposal Total After Addendum
204.0115	Removing Asphaltic Surface Butt Joints	SY	445	55	500
204.0120	Removing Asphaltic Surface Milling	SY	30,635	20,105	50,740
455.0605	Tack Coat	GAL	9,085	1,410	10,495
460.2010	Incentive Air Voids HMA Pavement	DOL	15,005	2,260	17,265
460.6224	HMA Pavement 4 MT 58-28 S	TON	15,005	2,260	17,265

#### Plan Sheets:

Revised Plan Sheets	
Plan Sheet	Plan Sheet Title (brief description of changes to sheet)
10-12	Adjusted the graphics and notes to include the shoulder mill and overlay.
13-14	Adjusted and added butt joint details to account for the added shoulder mill and overlay.
25	Adjusted the mill and overlay shape and labels since the shoulders now include mill and overlay.
41	Adjusted the graphics and note to include shoulder mill and overlay.

43	Adjusted the graphics and note to include shoulder mill and overlay.
44	Removed the existing rumble strip graphic.
99	Revised a quantity in the Removal Items Table.
101	Revised the quantities in the Asphaltic Items table.
102	Revised the PWL table to include new HMA pavement for the shoulders.
121-129	Adjusted the sheets to show a 2-inch mill and 4-inch HMA overlay on the shoulders.

The responsibility for notifying potential subcontractors and suppliers of these changes remains with the prime contractor.

Sincerely,

*Mike Coleman*

Proposal Development Specialist  
Proposal Management Section

**ADDENDUM NO. 01**

**1500-49-60/61**

**January 30, 2026**

**Special Provisions**

**34. Other Project**

Work may be occurring concurrently on a local project in the Village of Harrison on Old Highway Road. The Old Highway Road project will interface with this project at the intersections of USH 10 with Firelane 8 and Old Highway Road (Station 976+60 'EB', RT). Coordinate the match line, timing of construction activities, and staging between the projects. If a conflict occurs and an agreement cannot be made with the contractor from the Old Highway Road project, the engineer will determine how to proceed.

- Local Project title: Old Highway Road Construction
- Local Project ID: H0006-09-25-00343

Contact Chad Pelishek, Village of Harrison Manager at (920) 989-1062 or [cpelishek@harrison.wi.gov](mailto:cpelishek@harrison.wi.gov) for more information.

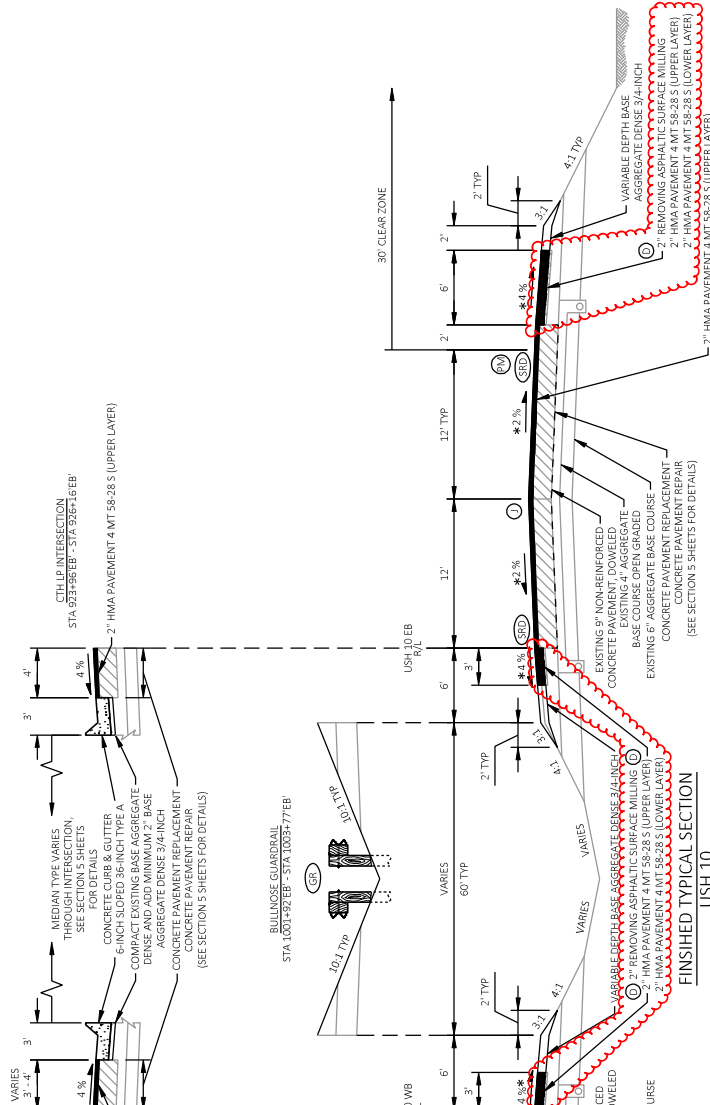
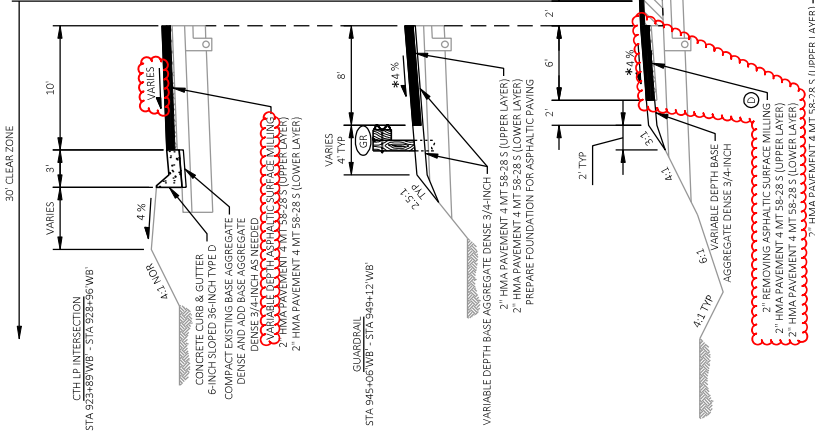
**Schedule of Items**

Attached, dated January 30, 2026, are the revised Schedule of Items Pages 1 and 3.

**Plan Sheets**

The following 8½ x 11-inch sheets are attached and made part of the plans for this proposal:  
Revised: 10-14, 25, 41, 43-44, 99, 101-102, and 121-129.

END OF ADDENDUM



Addendum No. 01  
ID 1500-49-61  
Revised Sheet 10  
January 30, 2026

NOTES

SEE SECTION 5 PLAN SHEETS FOR LOCATIONS OF EXISTING TURN LANES.

PAVEMENT CROSS SLOPES SHOWN ARE BASED ON ADJUSTED PLANS. MATCH EXISTING PAVEMENT CROSS SLOPES.

\* CROSS SLOPES VARY DUE TO SUPER ELEVATION. SEE SECTION 5 PLANS FOR SUPERELEVATION INFORMATION.

① DEPTH OF MILLING MEASURED FROM ADJACENT CONCRETE PAVEMENT

② SEE CONSTRUCTION DETAILS - GUARDRAIL FOR LOCATIONS OF PROPOSED GUARDRAIL.

③ CONCRETE PANEL WIDTHS AND JOINT LOCATIONS VARY THROUGH THE TRANSITION FROM FOUR LANE DIVIDED TO TWO LANE SEGMENT. STA 1012+45' EB - STA 1025+14' EB

④ EXISTING RAISED PAVEMENT MARKERS TO BE REMOVED. SEE MISCELLANEOUS QUANTITIES FOR MORE INFORMATION

⑤ ASPHALTIC SHOULDER RUMBLE STRIPS, DIVIDED ROADWAY. SEE SDD FOR 'SHOULDER RUMBLE STRIPS, DIVIDED ROADWAY' FOR ADDITIONAL INFORMATION.

PROJECT NO: 1500-49.61

HWY: USH 10

COUNTY: CALUMET

TYPICAL SECTIONS

SHEET 10

E

FILE NAME: P:\56X\5699 DP 24\USH10.CAL\CAOS\13004960\01\02\0301-TS.DWG

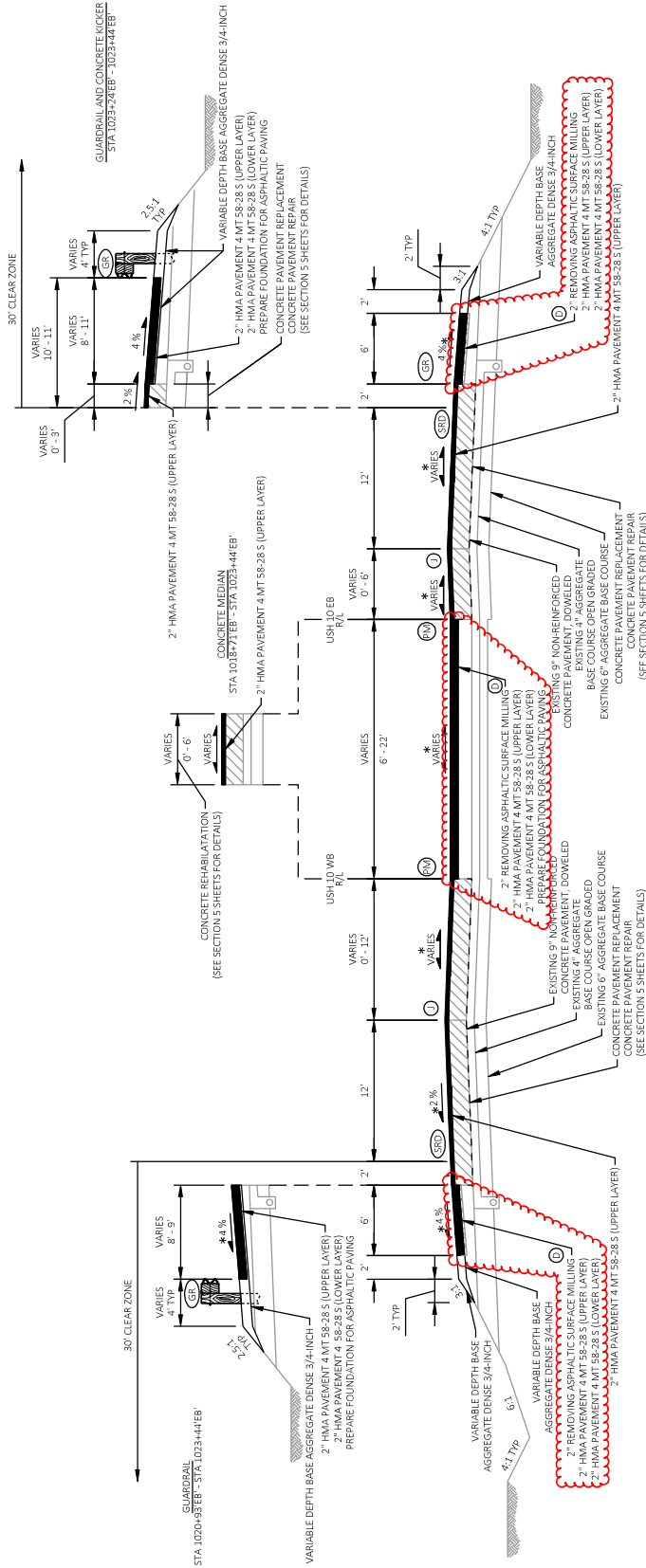
LAYOUT NAME: 07

PLOT NAME: 1 IN=30 FT

WISDOT/CAOS SHEET 12



Addendum No. 01  
ID 1500-49-61  
Revised Sheet 11  
January 30, 2026



NOTES

PAVEMENT CROSS SLOPES SHOWN ARE BASED ON ASSUMED PLANS. ACTUAL CROSS SLOPES VARY. MATCH EXISTING PAVEMENT CROSS SLOPES.

\* CROSS SLOPES VARY DUE TO SUPER ELEVATION. SEE SECTION 5 PLANS FOR SUPERELEVATION INFORMATION.

① DEPTH OF MILLING MEASURED FROM ADJACENT CONCRETE PAVEMENT.

② SEE CONSTRUCTION DETAILS - GUARDRAIL FOR LOCATIONS OF PROPOSED GUARDRAIL.

③ CONCRETE PANEL WIDTHS AND JOINT LOCATIONS VARY THROUGH THE TRANSITION FROM FOUR LANE DIVIDED TO TWO LANE SEGMENT. STA 1012+45.0' - STA 1025+14.0'

④ EXISTING RAISED PAVEMENT MARKERS TO BE REMOVED. SEE MISCELLANEOUS QUANTITIES FOR MORE INFORMATION.

⑤ ASPHALTIC SHOULDER RUMBLE STRIPS, DIVIDED ROADWAY. SEE SDD FOR 'SHOULDER RUMBLE STRIPS, DIVIDED ROADWAY' FOR ADDITIONAL INFORMATION.

PROJECT NO: 1500-49.61

HWY: USH 10

COUNTY: CALUMET

TYPICAL SECTIONS

SHEET 11

E

FILE NAME: P:\56\A\5699.DP 24\USH10.CAL\CA005\13004960\01\15.DWG  
LAYOUT NAME: 08

PLOT DATE: 1/26/2026 8:58 AM

PLOT BY: AUSTIN STRAHL

PLOT SCALE: 1 IN=10 FT

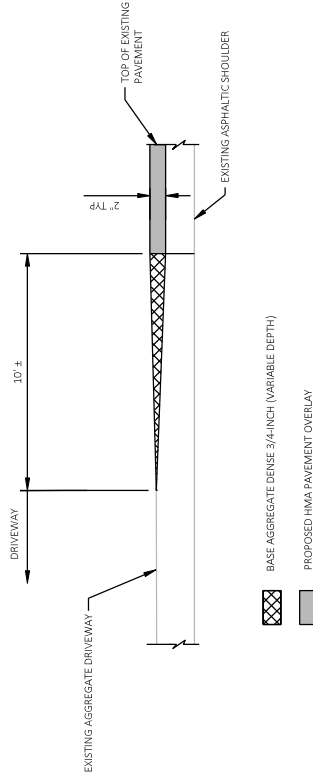
WISDOT/CADDS SHEET 12

WISDOT/CADD SHEET 42



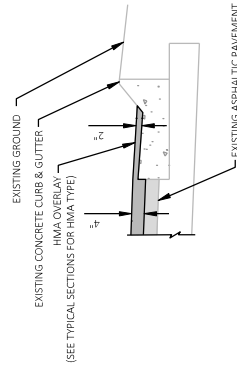
PLOT NO: 1500-49-61	HWY: USH 10	COUNTY: CALUMET	TYPICAL SECTIONS	E
P:\SWM\5689 DP\ALUSHU10\CALCUL\15004960\SHEETS\020301-TS.DWG LAYOUT NAME : 09				
		PLOT DATE: 1/27/2026 7:21 AM	PLOT BY: AUSTIN STRAHL	PLOT SCALE: 1 IN=10 FT
				SHEET 12
WISDOT/CADD SHEET 42				





STA 923+89'WB' (USH 10 MEDIUM SHOULDER)  
STA 924+39'WB' (USH 10 DRIVING LANE SHOULDER)  
STA 925+74'WB' (USH 10 TURN LANE)  
STA 926+16'EB' (USH 10 MEDIUM SHOULDER)  
STA 1019+16'EB' (USH 10 MEDIUM SHOULDER)

SEE SECTION 5 PLAN SHEETS FOR LOCATIONS  
PROJECT 1500+49-61



## CURB &amp; GUTTER HMA OVERLAY DETAIL

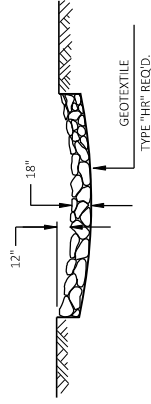
PROJECT 1500-49-61 MEDIANS (EXCEPT AS SHOWN ON PAVING DETAILS)  
ZIRBEL DRIVE, RT

**NOTES**  
COMPLETE CURB & GUTTER REPLACEMENTS AND ASPHALTIC SURFACE PATCHING TO MATCH THE EXISTING SURFACE PRIOR TO THE MILL AND OVERLAY  
FOR DETAILS NOT SHOWN, SEE SDD "CONCRETE CURB AND GUTTER" AND SDD "CONCRETE CURB, TIES AND CURB AND GUTTER APPLICATIONS"

SEE INTERSECTION DETAILS, CURB RAMP DETAILS, MISCELLANEOUS QUANTITIES, AND SECTION 5 PLAN SHEETS FOR ADDITIONAL INFORMATION

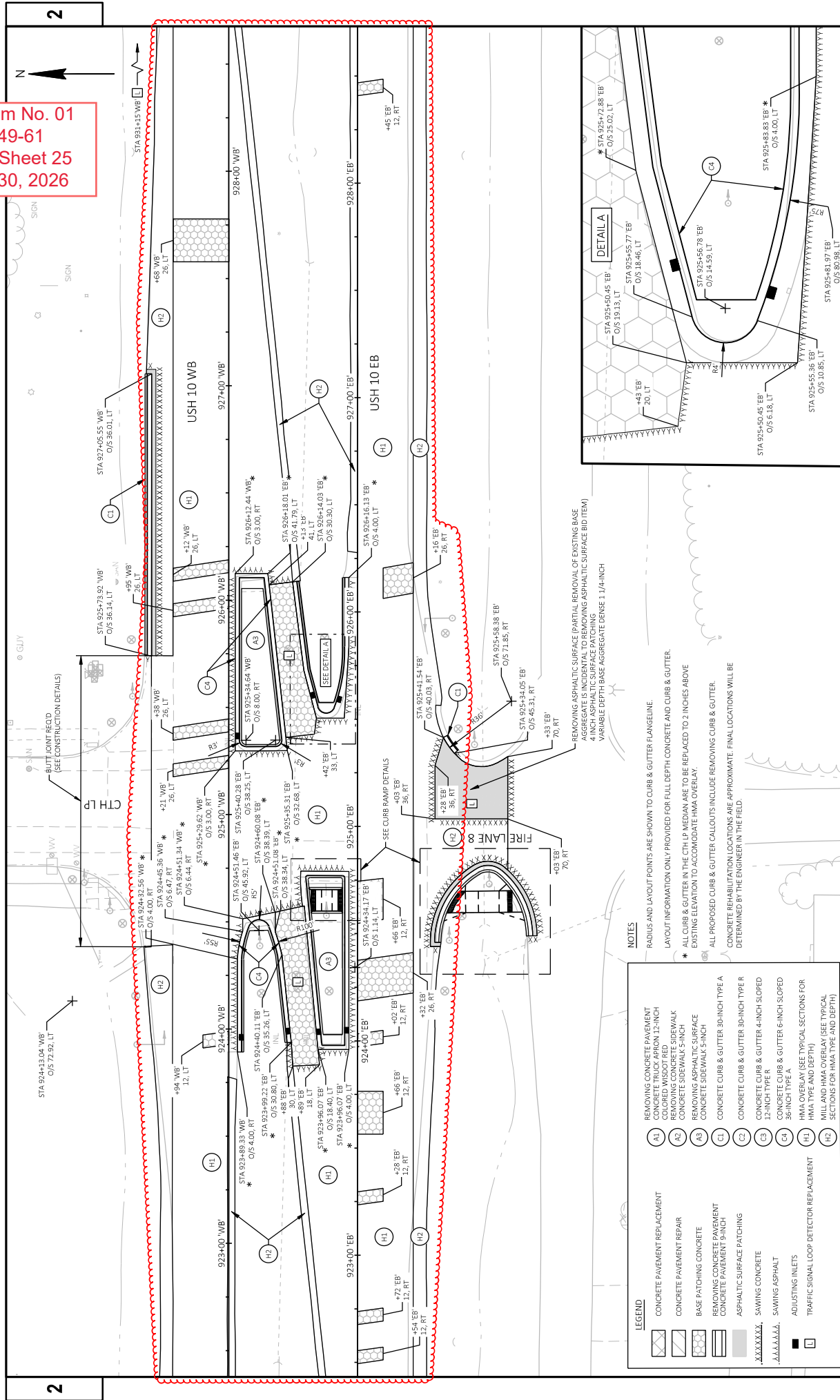
NOTE  
SEE CONSTRUCTION DETAILS - GUARDRAIL FOR LOCATIONS

RIPRAP MEDIUM TREATMENT DETAIL



Addendum No. 01  
ID 1500-49-61  
Revised Sheet 14  
January 30, 2026

Addendum No. 01  
ID 1500-49-61  
Revised Sheet 25  
January 30, 2026



REMOVING CONCRETE PAVEMENT  
CONCRETE PAVEMENT REPLACEMENT  
CONCRETE PAVEMENT REPAIR  
CONCRETE SIDEWALK 5-INCH  
REMOVING ASPHALTIC SURFACE  
CONCRETE SIDEWALK 5-INCH  
CONCRETE CURB & GUTTER 30-INCH TYPE A  
CONCRETE CURB & GUTTER 30-INCH TYPE R  
CONCRETE CURB & GUTTER 4-INCH SLOPED  
CONCRETE CURB & GUTTER 6-INCH SLOPED  
CONCRETE CURB & GUTTER 6-INCH SLOPED  
HMA OVERLAY (SEE TYPICAL SECTIONS FOR  
MILL AND HMA OVERLAY) (SEE TYPICAL  
SECTIONS FOR HMA TYPE AND DEPTH)

A1

A2

A3

A4

A5

A6

A7

A8

A9

A10

A11

A12

REMOVING CONCRETE PAVEMENT  
CONCRETE PAVEMENT REPLACEMENT  
CONCRETE PAVEMENT REPAIR  
CONCRETE SIDEWALK 5-INCH  
REMOVING ASPHALTIC SURFACE  
CONCRETE SIDEWALK 5-INCH  
CONCRETE CURB & GUTTER 30-INCH TYPE A  
CONCRETE CURB & GUTTER 30-INCH TYPE R  
CONCRETE CURB & GUTTER 4-INCH SLOPED  
CONCRETE CURB & GUTTER 6-INCH SLOPED  
CONCRETE CURB & GUTTER 6-INCH SLOPED  
HMA OVERLAY (SEE TYPICAL SECTIONS FOR  
MILL AND HMA OVERLAY) (SEE TYPICAL  
SECTIONS FOR HMA TYPE AND DEPTH)

A1

A2

A3

A4

A5

A6

A7

A8

A9

A10

A11

A12

NOTES  
RADIUS AND LAYOUT POINTS ARE SHOWN TO CURB & GUTTER FLANGE LINE.  
LAYOUT INFORMATION ONLY PROVIDED FOR FULL DEPTH CONCRETE AND CURB & GUTTER.  
\* ALL CURB & GUTTER IN THE CTH LP MEDIAN ARE TO BE REPLACED TO 2 INCHES ABOVE  
EXISTING ELEVATION TO ACCOMMODATE HMA OVERLAY.  
ALL PROPOSED CURB & GUTTER CALLOUTS INCLUDE REMOVING CURB & GUTTER.  
CONCRETE REHABILITATION LOCATIONS ARE APPROXIMATE. FINAL LOCATIONS WILL BE  
DETERMINED BY THE ENGINEER IN THE FIELD.

REMOVING ASPHALTIC SURFACE (PARTIAL REMOVAL OF EXISTING BASE  
AGGREGATE IS INCIDENTAL TO REMOVING ASPHALTIC SURFACE BID ITEM)  
4 INCH ASPHALTIC SURFACE PATCHING  
VARIABLE DEPTH BASE AGGREGATE DENSE 1 1/4-INCH

PROJECT NO: 1500-19-61

COUNTY: CALUMET

PAVING DETAILS

SHEET 25

E

FILE NAME: P:\56X\5699 DP 24 USH10 CA\CA005\15004960\01\1500-49-61-02

LAYOUT NAME: 02

PROJECT NO: 1500-19-61

COUNTY: CALUMET

PAVING DETAILS

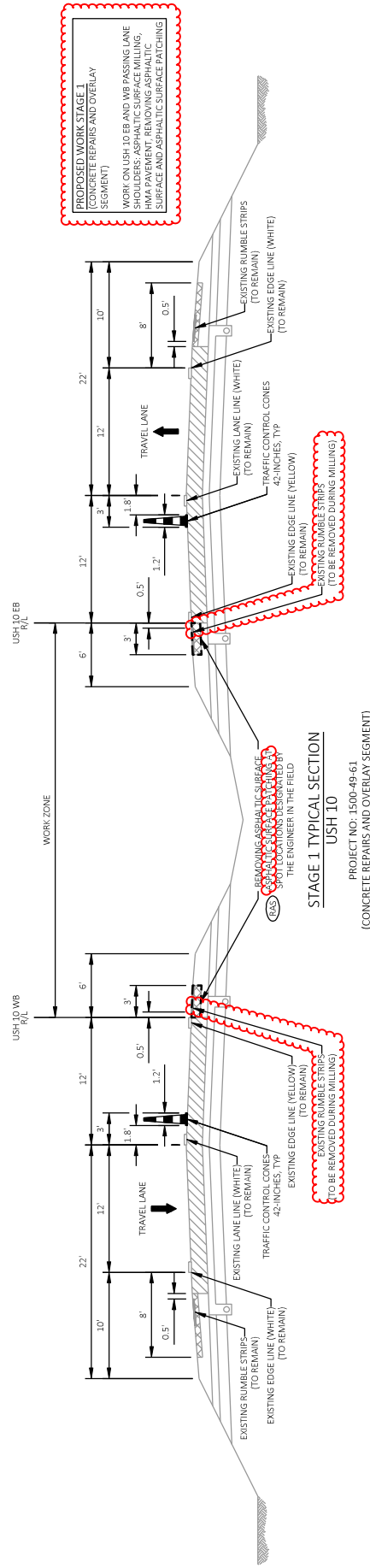
SHEET 25

E

FILE NAME: P:\56X\5699 DP 24 USH10 CA\CA005\15004960\01\1500-49-61-02

LAYOUT NAME: 02

TRAFFIC CONTROL CONES 42-INCH



SEE TYPICAL SECTIONS FOR ADDITIONAL USH 10 CONFIGURATIONS.

MINIMIZE THE DURATION TRAFFIC IS SHIFTED ON THE ASPHALT SHOULDERS.

AFTER MILLING, PERFORM REMOVING ASPHALTIC SURFACE TO 5" BELOW EDGE OF CONCRETE PAVEMENT IN LOCATIONS DIRECTED BY THE ENGINEER. PARTIAL REMOVAL OF EXISTING BASE AGGREGATE IS TO ACHIEVE 5" TOTAL PAVEMENT THICKNESS (3" ASPHALTIC SURFACE PATCHING AND 2" HMA PAVEMENT) AND IS INCIDENTAL TO THE REMOVING ASPHALTIC SURFACE BID ITEM.

SEE MISCELLANEOUS QUANTITIES FOR TEMPORARY AND PERMANENT PAVEMENT MARKING TYPES AND SIZES.

PROJECT NO: 1500-49-61

HWY: USH 10

COUNTY: CALUMET

TRAFFIC CONTROL - TYPICAL SECTIONS

PLOT SCALE : 1 IN:10 FT

SHEET 41

FILE NAME : P:\56XX\5699.DP.24.USH10.CAL\CADD\15004960\SHEETS\025101-TC.DWG  
LAYOUT NAME - 02

PLOT DATE: 1/27/2026 11:33 AM

PLOT BY : AUSTIN STRAHL  
PLOT NAME :

1 IN:10 FT

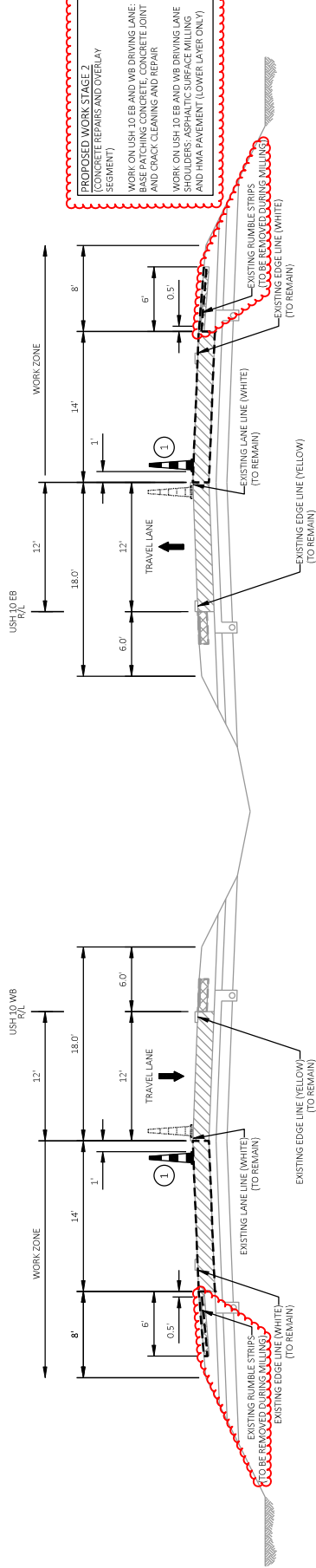
WISDOT/CADDs SHEET 42

LEGEND



TRAFFIC CONTROL CONES 42-INCH, IN AREAS WITH NO ACTIVE CONSTRUCTION ACTIVITIES AND DURING NON-WORKING HOURS

TRAFFIC CONTROL CONES 42-INCH, FOR AREAS IMMEDIATELY ADJACENT TO ACTIVE CONSTRUCTION ACTIVITIES



STAGE 2 TYPICAL SECTION

USH 10

PROJECT NO: 1500-49-61  
(CONCRETE REPAIRS AND OVERLAY SEGMENT)

Addendum No. 01  
ID 1500-49-61  
Revised Sheet 43  
January 30, 2026

NOTES

SEE TYPICAL SECTIONS FOR ADDITIONAL USH 10 CONFIGURATIONS.

- 1 CONE LOCATION SHOWN FOR AREAS WITH NO ACTIVE CONSTRUCTION ACTIVITIES AND DURING NON-WORKING HOURS. CONES MAY BE SHIFTED PAST LANE LINE INTO THE TRAVEL LANE IN AREAS IMMEDIATELY ADJACENT TO ACTIVE CONSTRUCTION ACTIVITIES.

MINIMIZE THE DURATION TRAFFIC IS SHIFTED ON THE ASPHALT SHOULDERS.

SEE MISCELLANEOUS QUANTITIES FOR TEMPORARY AND PERMANENT PAVEMENT MARKING TYPES AND SIZES.

PROJECT NO: 1500-49-61

HWY: USH 10

COUNTY: CALUMET

TRAFFIC CONTROL - TYPICAL SECTIONS

SHEET 43

E

FILE NAME: P:\56X\5699 DP 24\USH10.CAL\CAODS\13004960\01\02102-1C.DWG  
LAYOUT NAME: 04

PLOT DATE: 1/27/2026 11:33 AM

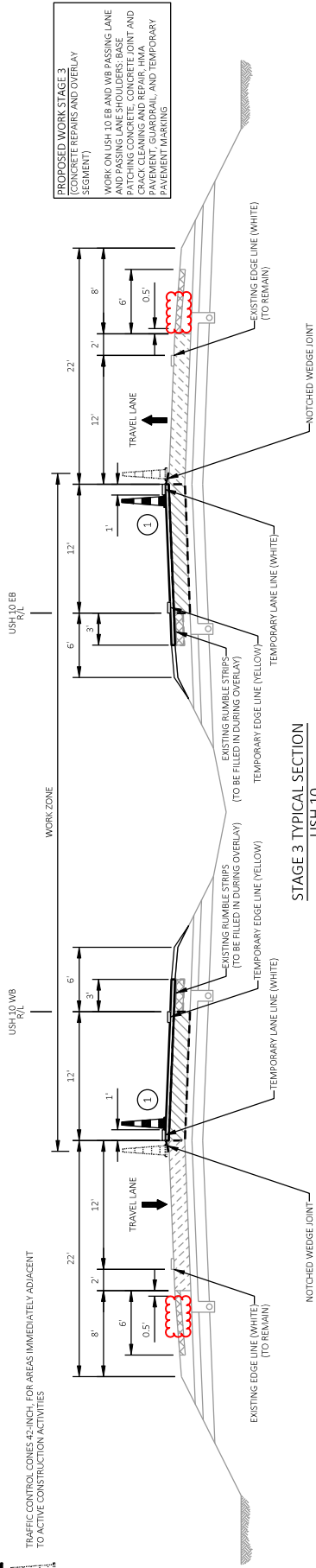
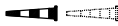
PLOT BY: AUSTIN STRAHL

PLOT SCALE: 1 IN=10 FT

WISDOT/CAODS SHEET 43

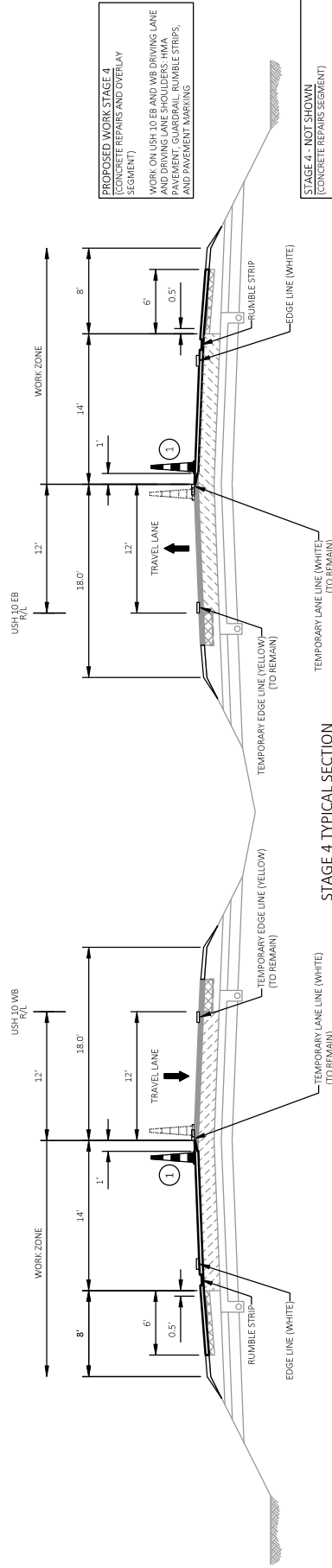
LEGEND

TRAFFIC CONTROL CONES 42-INCH, IN AREAS WITH NO ACTIVE CONSTRUCTION ACTIVITIES AND DURING NON-WORKING HOURS TO ACTIVE CONSTRUCTION ACTIVITIES



STAGE 3 TYPICAL SECTION  
USH 10

PROJECT NO. 1500-49-61  
(CONCRETE REPAIRS AND OVERLAY SEGMENT)



STAGE 4 TYPICAL SECTION  
USH 10

PROJECT NO. 1500-49-61  
(CONCRETE REPAIRS AND OVERLAY SEGMENT)

NOTES

SEE TYPICAL SECTIONS FOR ADDITIONAL USH 10 CONFIGURATIONS.

- 1 CONE LOCATION SHOWN FOR AREAS WITH NO ACTIVE CONSTRUCTION ACTIVITIES AND DURING NON-WORKING HOURS. CONES ARE TO BE SHIFTED PAST LANE LINE INTO THE TRAVEL LANE IN AREAS IMMEDIATELY ADJACENT TO ACTIVE CONSTRUCTION ACTIVITIES.

MINIMIZE THE DURATION TRAFFIC IS SHIFTED ON THE ASPHALT SHOULDERS.

SEE MISCELLANEOUS QUANTITIES FOR TEMPORARY AND PERMANENT PAVEMENT MARKING TYPES AND SIZES.

Addendum No. 01  
ID 1500-49-61  
Revised Sheet 44  
January 30, 2026

PROJECT NO: 1500-49-60/61

HWY: USH 10

COUNTY: CALUMET

TRAFFIC CONTROL - TYPICAL SECTIONS

SHEET 44

E

FILE NAME: P:\56X\5699 DP 24 USH10.CAL\CAODS\13004960\01\02102-1C.DWG

LAYOUT NAME: 05

PLOT DATE: 1/29/2026 1:05 PM

PLOT BY: AUSTIN STRAHL

PLOT NAME:

PLOT SCALE: 1 IN=10 FT

WISDOT/CAODS SHEET 42



Addendum No. 01  
ID 1500-49-61  
Revised Sheet 99  
January 30, 2026

PROJECT	STATION	OFFSET	REMOVING SMALL PIPE PERITS	REMOVING DELINATORS AND MARKERS	204.0180 204.9660 S.O.I	204.9660 S.O.I REMOVING APON EACHS	COMMENTS
1500-49-61	939-91'W8'	LT	--	1	1	1	18" CPVC (A&W ONLY)
	952-49'W8'	LT	1	1	1	1	19"X30" CPRPPE (A&W ONLY)
	973-06'W8'	LT	1	1	1	1	18" CPVC (A&W ONLY)
TOTALS			1	3	3		

## REMOVAL ITEMS

PROJECT	STATION	TO	STATION	OFFSET	SY	204.0100 REMOVING CONCRETE PAVEMENT	204.0105 REMOVING CONCRETE PAVEMENT BUTT JOINTS	204.0115 REMOVING ASPHALTIC SURFACE BUTT JOINTS	204.0120 MILLING ASPHALTIC SURFACE	204.0130 REMOVING CURB & GUTTER	204.0135 CONCRETE SIDEWALK	204.0165 REMOVING GUARDRAIL	204.0185 REMOVING PAVEMENT MARKERS WITH OVERLAY	204.0200 REMOVING PAVEMENT MARKERS WITH OVERLAY	COMMENTS	
1500-49-60	814-932EB*	-	819-932EB*	LT & RT	--	--	--	--	--	587	20	--	--	--	EB MAINLINE / MEDIAN	
	814-935WB*	-	819-932WB*	LT & RT	150	--	--	--	--	73	--	--	--	--	WB MAINLINE	
	819-932EB*	-	819-932EB*	LT & RT	--	--	--	--	--	--	--	--	--	--	WB MAINLINE	
	819-932WB*	-	846-925WB*	LT & RT	--	--	--	--	--	--	--	--	--	--	WB MAINLINE	
	819-932EB*	-	912-383EB*	RT	--	--	30	6,680	--	57	--	--	--	--	OUTSIDE SHOULDER / INTERSECTIONS	
	819-932EB*	-	912-383EB*	LT	--	--	--	5,206	--	--	--	--	--	--	MEDIAN SHOULDER / MEDIAN	
	819-932WB*	-	912-461WB*	LT	--	--	20	7,102	--	--	--	--	--	--	OUTSIDE SHOULDER / INTERSECTIONS	
	819-932WB*	-	912-461WB*	RT	--	--	--	4,472	--	--	--	--	--	--	GUARDRAIL REPLACEMENT	
	881-452EB*	-	887-777EB*	RT	--	550	--	--	--	200	--	--	--	--	GUARDRAIL REPLACEMENT	
	885-154WB*	-	889-451WB*	LT	--	350	--	--	--	200	--	--	--	--	ONIDA STREET	
372-36	-	374-64	LT	170	--	--	--	--	5	--	--	--	--	--		
1500-49-60 TOTALS					320	--	900	50	21,360	717	25	400	180	--		
1500-49-61	912-383EB*	-	1030-307EB*	RT	--	--	--	--	--	--	--	--	--	--	EB DRIVING LANE	
	912-383EB*	-	1012-327EB*	LT & RT	--	145	--	--	--	--	--	--	--	40	EB PASSING LANE	
	912-383EB*	-	1030-307EB*	RT	--	67	--	6,379	--	--	--	--	--	--	EB DRIVING LANE SHOULDER	
	912-383EB*	-	1015-163EB*	LT	--	2	--	3,283	--	--	--	--	--	--	EB PASSING LANE SHOULDER	
	912-383EB*	-	1015-163EB*	RT	--	2	--	3,283	--	--	--	--	--	--	EB PASSING LANE SHOULDER	
	912-461WB*	-	1030-307EB*	LT	--	156	--	1,532	--	--	--	--	--	--	WB DRIVING LANE	
	912-461WB*	-	1019-932WB*	LT & RT	--	--	--	--	--	--	--	--	--	--	WB PASSING LANE	
	912-461WB*	-	1019-932WB*	LT	--	--	--	6,841	--	--	--	--	--	--	WB DRIVING LANE SHOULDER	
	912-461WB*	-	1020-307EB*	LT	--	--	29	214	--	--	--	--	--	--	WB DRIVING LANE SHOULDER	
	912-461WB*	-	1030-307EB*	LT & RT	--	152	353	3,107	--	84	--	--	--	--	WB DRIVING LANE SHOULDER	
944-417EB*	-	945-087EB*	LT	--	--	--	234	--	--	--	--	--	--	MAINTENANCE CROSSOVER		
945-087WB*	-	949-127WB*	LT	--	294	--	157	--	190	--	--	--	--	GUARDRAIL REPLACEMENT		
945-087WB*	-	949-127WB*	RT	--	294	--	157	--	190	--	--	--	--	GUARDRAIL REPLACEMENT		
972-797EB*	-	980-238EB*	LT & RT	--	80	--	1,532	--	34	--	--	--	--	EISENHOWER		
972-797EB*	-	980-238EB*	LT & RT	--	11	--	1,532	--	--	--	--	--	--	COLD HWY RD / MEDIAN		
1003-757EB*	-	1003-757EB*	LT	--	--	--	--	--	--	350	--	--	--	--	GUARDRAIL REPLACEMENT	
1009-267WB*	-	1012-327WB*	LT & RT	--	13	--	1,060	--	--	--	--	--	--	FRONTAGE RD / MEDIAN		
1018-43EB*	-	1023-442EB*	LT & RT	--	--	--	--	--	--	--	--	--	--	50	EB / WB CENTERLINE	
1018-43EB*	-	1023-442EB*	LT	--	284	--	--	--	--	285	--	--	--	--	GUARDRAIL REPLACEMENT	
1022-435EB*	-	1023-402EB*	RT	--	49	--	309	--	--	--	--	--	--	--	ZIBBEL DR	
1022-484EB*	-	1025-982EB*	RT	--	229	--	200	--	--	200	--	--	--	--	GUARDRAIL REPLACEMENT	
	CTH N			--	--	--	9	2,234	--	--	--	--	--	--	PARK AND RIDE	
1500-49-61 TOTALS						--	1,000	--	--	--	--	--	--	--	--	
					205	520	2,440	65	8,78	1,005	90	1,405	180	90	90	
					1,025	520	3,140	65	29,380	1,595	90	1,405	180	90	90	
1500-49-61 TOTALS																

NOTES:  
UNDISTRIBUTED REMOVING ASPHALTIC SURFACE USED FOR MISCELLANEOUS REPAIRS IN MEDIAN SHOULD BE DESIGNATED BY THE ENGINEER  
\* ADDITIONAL QUANTITIES SHOWN ELSEWHERE

NOTE

ALL QUANTITIES FOR THIS SHEET ARE PART OF CATEGORY 10.

PROJECT NO: 1500-49-60/61

FILE NAME: P:\56XX\5699.DP.24.USHIO.CAL\CADD\15004960\SHEETS\030201-MQ.DWG

LAYOUT NAME - 01

COUNTY: CALUMET

MISCELLANEOUS QUANTITIES

---

---

PLOT BY:	AUSTIN STRAHL	PLOT NAME:
----------	---------------	------------

PLOT SCALE: 1" = 1'

3

WISDOT/CADDs SHEET 42

Addendum No. 01  
ID 1500-49-61  
Revised Sheet 101  
January 30, 2026

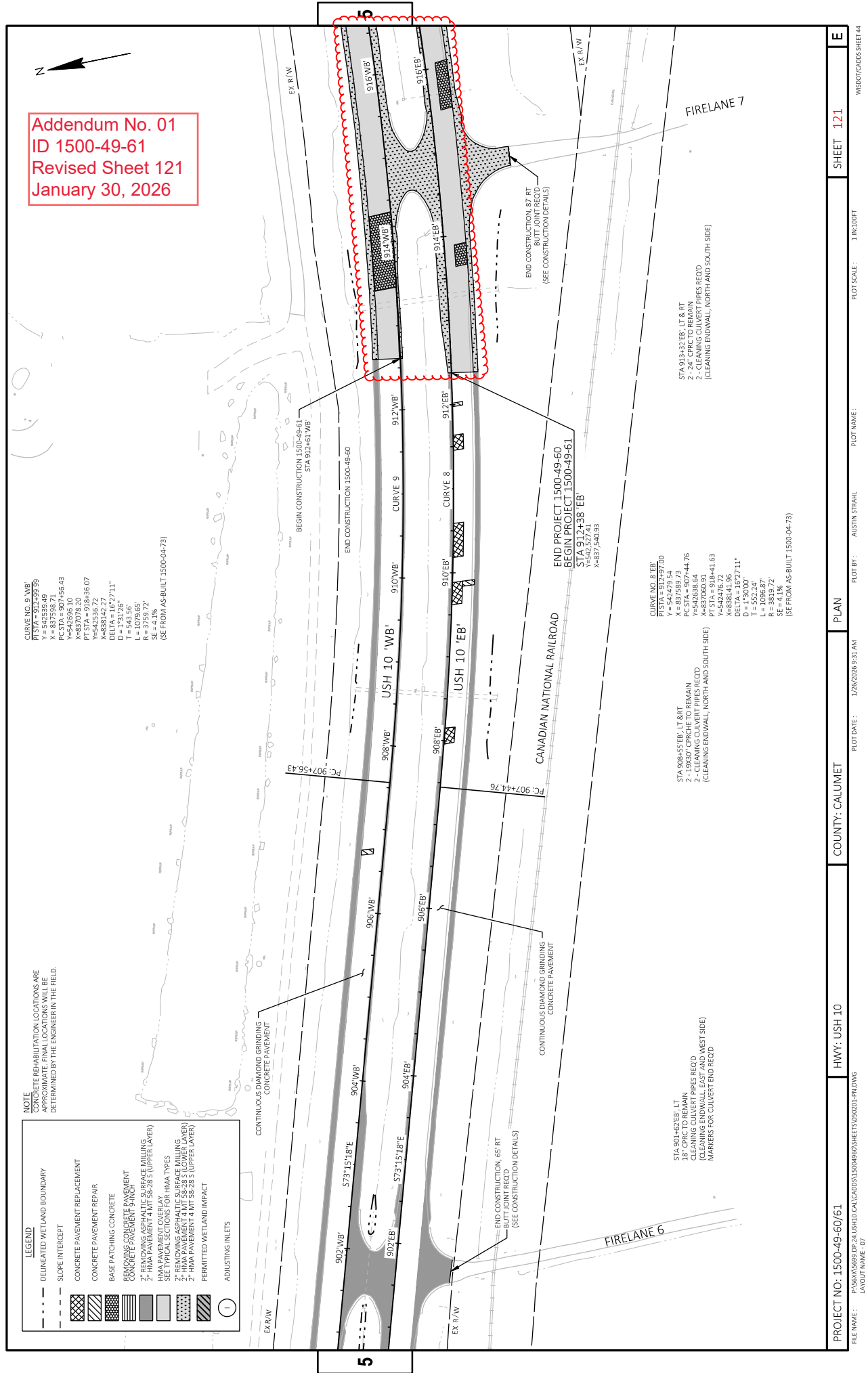
WISDOT/CADDs SHEET 42

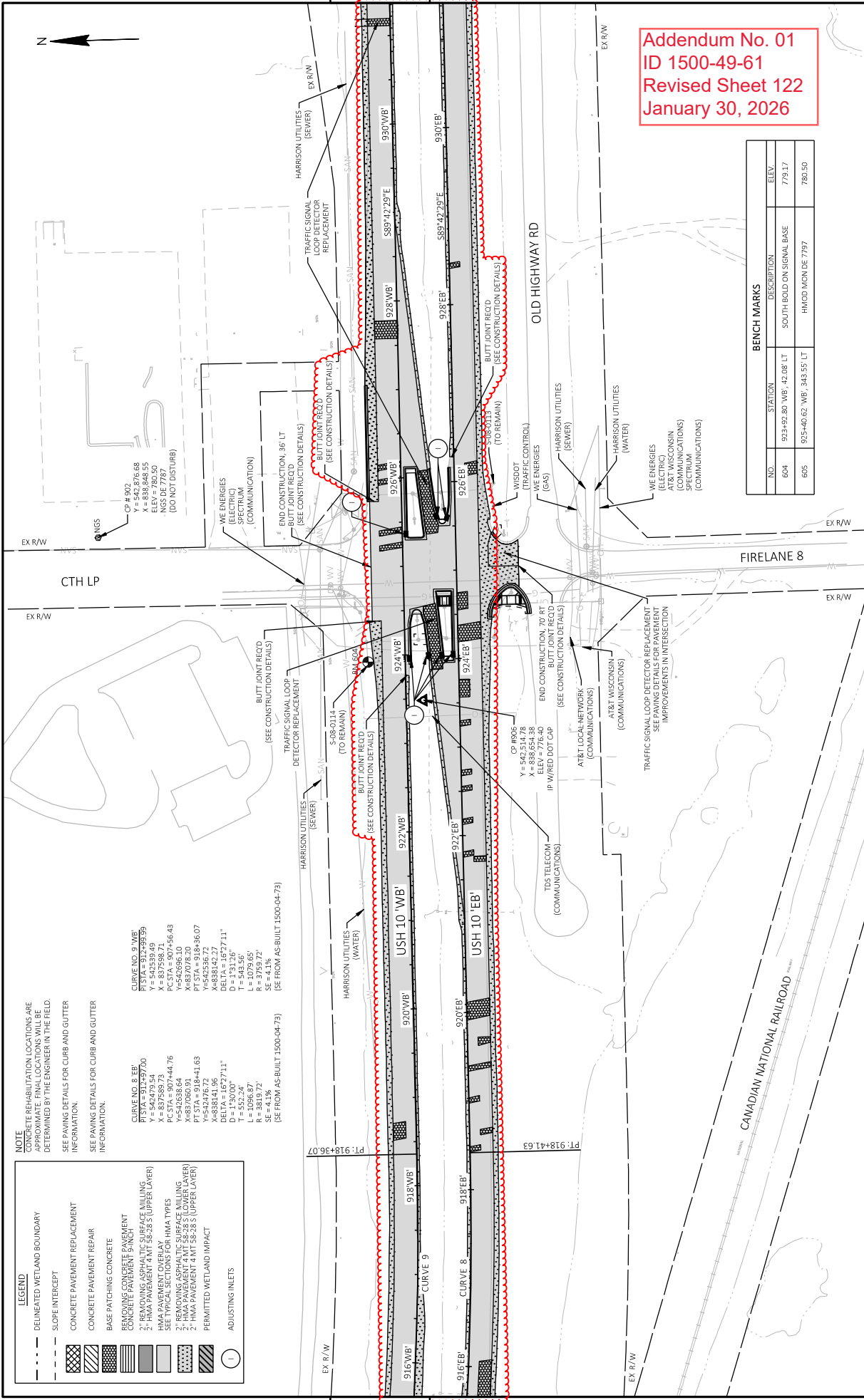
WISDOT/CADDs SHEET 42

PROJECT 1500-89-60	LOCATION	STA	TO	STA	MIXTURE USE	UNDERLYING SURFACE	BID ITEM	TONS	THICKNESS	QUALITY MANAGEMENT PROGRAM TO BE USED FOR MIXTURE ACCEPTANCE	DENSITY ACCEPTANCE
	OUTSIDE SHOULDER / INTERSECTIONS	820+49' EB - 820+15' WB	-	912+38' EB - 912+61' WB	UPPER LAYER	MILLED EXISTING HMA SURFACE	HMA PAVEMENT 4 MT 58-28.5	1,549	2"	PWL INCENTIVE AIR VOIDS HMA PAVEMENT 460-2010	DEPARTMENT ACCEPTANCE (\$S 460.3.3.2) *NOT ELIGIBLE FOR INCENTIVE
	MEDIAN SHOULDER / MEDIAN OPENINGS	846+23' EB - 846+25' WB	-	912+38' EB - 912+61' WB	UPPER LAYER	MILLED EXISTING HMA SURFACE	HMA PAVEMENT 4 MT 58-28.5	855	2"	PWL INCENTIVE AIR VOIDS HMA PAVEMENT 460-2010	DEPARTMENT ACCEPTANCE (\$S 460.3.3.2) *NOT ELIGIBLE FOR INCENTIVE
	GUARDRAIL	881+62' EB - 881+54' WB	-	887+77' EB - 889+41' WB	LOWER LAYER	BASE AGGREGATE	HMA PAVEMENT 4 MT 58-28.5	100	2"	PWL INCENTIVE AIR VOIDS HMA PAVEMENT 460-2010	DEPARTMENT ACCEPTANCE (\$S 460.3.3.2) *NOT ELIGIBLE FOR INCENTIVE
	GUARDRAIL	881+62' EB - 885+54' WB	-	887+77' EB - 889+41' WB	UPPER LAYER	4 MT 58-28.5	HMA PAVEMENT 4 MT 58-28.5	101	2"	PWL INCENTIVE AIR VOIDS HMA PAVEMENT 460-2010	DEPARTMENT ACCEPTANCE (\$S 460.3.3.2) *NOT ELIGIBLE FOR INCENTIVE
	VARIOUS PATCHES	814+93' EB - 814+93' WB	-	912+38' EB - 912+61' WB	PATCHING AFTER IMPROVEMENTS / SHOULDER REPAIRS	BASE AGGREGATE	ASPHALTIC SURFACE PATCHING	65	VARIES	(\$S 465)	ORDINARY COMPACTION (\$S 450.3.2.6.2)
1500-89-61	12 FOOT DRIVING LANE	912+38' EB - 916+54' WB	-	1026+14' EB - 1030+30' WB	UPPER LAYER	EXISTING CONCRETE SURFACE	HMA PAVEMENT 4 MT 58-28.5	3,512	2"	PWL INCENTIVE AIR VOIDS HMA PAVEMENT 460-2010	INCENTIVE DENSITY PWL HMA PAVEMENT 460-2005
	12 FOOT PASSING LANE	912+38' EB - 912+61' WB	-	1012+65' EB - 1015+65' WB	UPPER LAYER	EXISTING CONCRETE SURFACE	HMA PAVEMENT 4 MT 58-28.5	3,036	2"	PWL INCENTIVE AIR VOIDS HMA PAVEMENT 460-2010	INCENTIVE DENSITY PWL HMA PAVEMENT 460-2005
	OUTSIDE* / MEDIAN SHOULDER	912+38' EB - 912+61' WB	-	1030+30' EB - 1039+92' WB	LOWER LAYER	MILLED EXISTING HMA SURFACE	HMA PAVEMENT 4 MT 58-28.5	2,704	2"	PWL INCENTIVE AIR VOIDS HMA PAVEMENT 460-2010	DEPARTMENT ACCEPTANCE (\$S 460.3.3.2) *NOT ELIGIBLE FOR INCENTIVE
	OUTSIDE* / MEDIAN SHOULDER	912+38' EB - 912+61' WB	-	1039+92' WB	UPPER LAYER	4 MT 58-28.5	HMA PAVEMENT 4 MT 58-28.5	2,704	2"	PWL INCENTIVE AIR VOIDS HMA PAVEMENT 460-2010	DEPARTMENT ACCEPTANCE (\$S 460.3.3.2) *NOT ELIGIBLE FOR INCENTIVE
	INTERSECTIONS / MEDIAN OPENINGS	912+38' EB - 913+73' WB	-	1023+00' EB - 1023+20' WB	LOWER LAYER	MILLED EXISTING HMA SURFACE	HMA PAVEMENT 4 MT 58-28.5	803	2"	PWL INCENTIVE AIR VOIDS HMA PAVEMENT 460-2010	DEPARTMENT ACCEPTANCE (\$S 460.3.3.2) *NOT ELIGIBLE FOR INCENTIVE
	INTERSECTIONS / MEDIAN OPENINGS	912+38' EB - 913+73' WB	-	1023+00' EB - 1023+20' WB	UPPER LAYER	4 MT 58-28.5	HMA PAVEMENT 4 MT 58-28.5	803	2"	PWL INCENTIVE AIR VOIDS HMA PAVEMENT 460-2010	DEPARTMENT ACCEPTANCE (\$S 460.3.3.2) *NOT ELIGIBLE FOR INCENTIVE
	CTH LP INTERSECTION	921+07' EB - 923+89' WB	-	926+16' EB - 929+98' WB	UPPER LAYER	EXISTING CONCRETE SURFACE	HMA PAVEMENT 4 MT 58-28.5	410	2"	PWL INCENTIVE AIR VOIDS HMA PAVEMENT 460-2010	DEPARTMENT ACCEPTANCE (\$S 460.3.3.2) *NOT ELIGIBLE FOR INCENTIVE
	GUARDRAIL	945+06' WB - 1020+99' EB	-	949+12' WB - 1026+02' EB	LOWER LAYER	BASE AGGREGATE	HMA PAVEMENT 4 MT 58-28.5	120	2"	PWL INCENTIVE AIR VOIDS HMA PAVEMENT 460-2010	DEPARTMENT ACCEPTANCE (\$S 460.3.3.2) *NOT ELIGIBLE FOR INCENTIVE
	GUARDRAIL	945+06' WB - 1020+99' EB	-	949+12' WB - 1026+02' EB	UPPER LAYER	4 MT 58-28.5	HMA PAVEMENT 4 MT 58-28.5	120	2"	PWL INCENTIVE AIR VOIDS HMA PAVEMENT 460-2010	DEPARTMENT ACCEPTANCE (\$S 460.3.3.2) *NOT ELIGIBLE FOR INCENTIVE
	EISENHOWER DR	962+43' WB - 964+09' WB	-	964+09' WB	LOWER LAYER	BASE AGGREGATE	HMA PAVEMENT 4 MT 58-28.5	118	3"	PWL INCENTIVE AIR VOIDS HMA PAVEMENT 460-2010	DEPARTMENT ACCEPTANCE (\$S 460.3.3.2) *NOT ELIGIBLE FOR INCENTIVE
	EISENHOWER DR	962+43' WB - 964+09' WB	-	964+09' WB	UPPER LAYER	4 MT 58-28.5	HMA PAVEMENT 4 MT 58-28.5	79	2"	PWL INCENTIVE AIR VOIDS HMA PAVEMENT 460-2010	DEPARTMENT ACCEPTANCE (\$S 460.3.3.2) *NOT ELIGIBLE FOR INCENTIVE
	PARK & RIDE (CTH N)	912+38' EB - 912+61' WB	-	N/A	UPPER LAYER	MILLED EXISTING HMA SURFACE	HMA PAVEMENT 4 MT 58-28.5	251	2"	PWL INCENTIVE AIR VOIDS HMA PAVEMENT 460-2010	DEPARTMENT ACCEPTANCE (\$S 460.3.3.2) *NOT ELIGIBLE FOR INCENTIVE
	VARIOUS PATCHES	912+38' EB - 912+61' WB	-	1030+30' EB - 1039+92' WB	PATCHING AFTER IMPROVEMENTS / SHOULDER REPAIRS	BASE AGGREGATE	ASPHALTIC SURFACE PATCHING	440	VARIES	(\$S 465)	ORDINARY COMPACTION (\$S 450.3.2.6.2)

[illegible]

Addendum No. 01  
ID 1500-49-61  
Revised Sheet 102  
January 30, 2026





**LEGEND**

- DELINEATED WETLAND BOUNDARY
- SLOPE INTERCEPT
- CONCRETE PAVEMENT REPLACEMENT
- CONCRETE PAVEMENT REPAIR
- BASE PATCHING CONCRETE
- REMOVING CONCRETE PAVEMENT
- CONCRETE PAVEMENT FINISH
- 2" REMOVING ASPHALTIC SURFACE MILLING
- 1" REMOVING ASPHALTIC SURFACE MILLING
- 2" REMOVING ASPHALTIC SURFACE MILLING
- 1" REMOVING ASPHALTIC SURFACE MILLING
- 2" HMA PAVEMENT 4" (15.25" UPPER LAYER)
- 2" HMA PAVEMENT 4" (15.25" UPPER LAYER)
- PERMITTED WETLAND IMPACT
- ADJUSTING INLETS

**NOTE**

CONCRETE REHABILITATION LOCATIONS ARE APPROXIMATE. FINAL LOCATIONS WILL BE DETERMINED BY THE ENGINEER IN THE FIELD.

SEE PAVING DETAILS FOR CURB AND GUTTER INFORMATION.

SEE PAVING DETAILS FOR CURB AND GUTTER INFORMATION.

**CURVE NO. 8 'EB'**

PT STA = 912+59.70

Y = 542539.49

PC STA = 907+44.76

Y = 542538.64

X = 837060.91

PT STA = 918+41.63

Y = 542539.49

X = 838141.96

DELTA = 167°11'

D = 130.00'

L = 1026.87'

R = 3819.72'

SE = 4.1%

(SE FROM AS-BUILT 1500-04-73)

**CURVE NO. 9 'WB'**

PT STA = 912+59.59

Y = 542539.49

PC STA = 907+44.76

Y = 542538.64

X = 837060.91

PT STA = 918+41.63

Y = 542539.49

X = 838141.96

DELTA = 167°11'

D = 130.00'

L = 1026.87'

R = 3819.72'

SE = 4.1%

(SE FROM AS-BUILT 1500-04-73)

**CURVE NO. 9 'WB'**

PT STA = 912+59.59

Y = 542539.49

PC STA = 907+44.76

Y = 542538.64

X = 837060.91

PT STA = 918+41.63

Y = 542539.49

X = 838141.96

DELTA = 167°11'

D = 130.00'

L = 1026.87'

R = 3819.72'

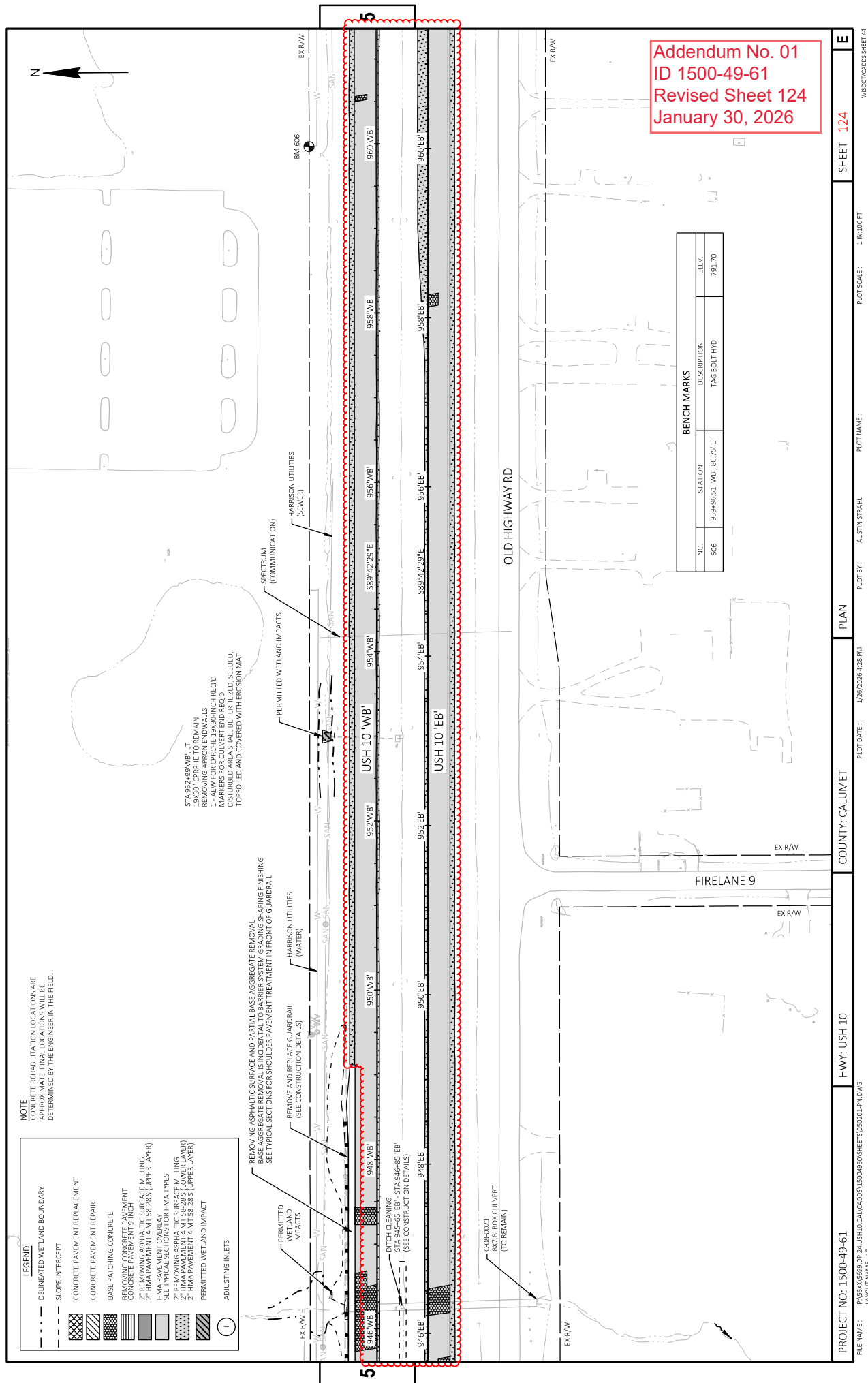
SE = 4.1%

(SE FROM AS-BUILT 1500-04-73)

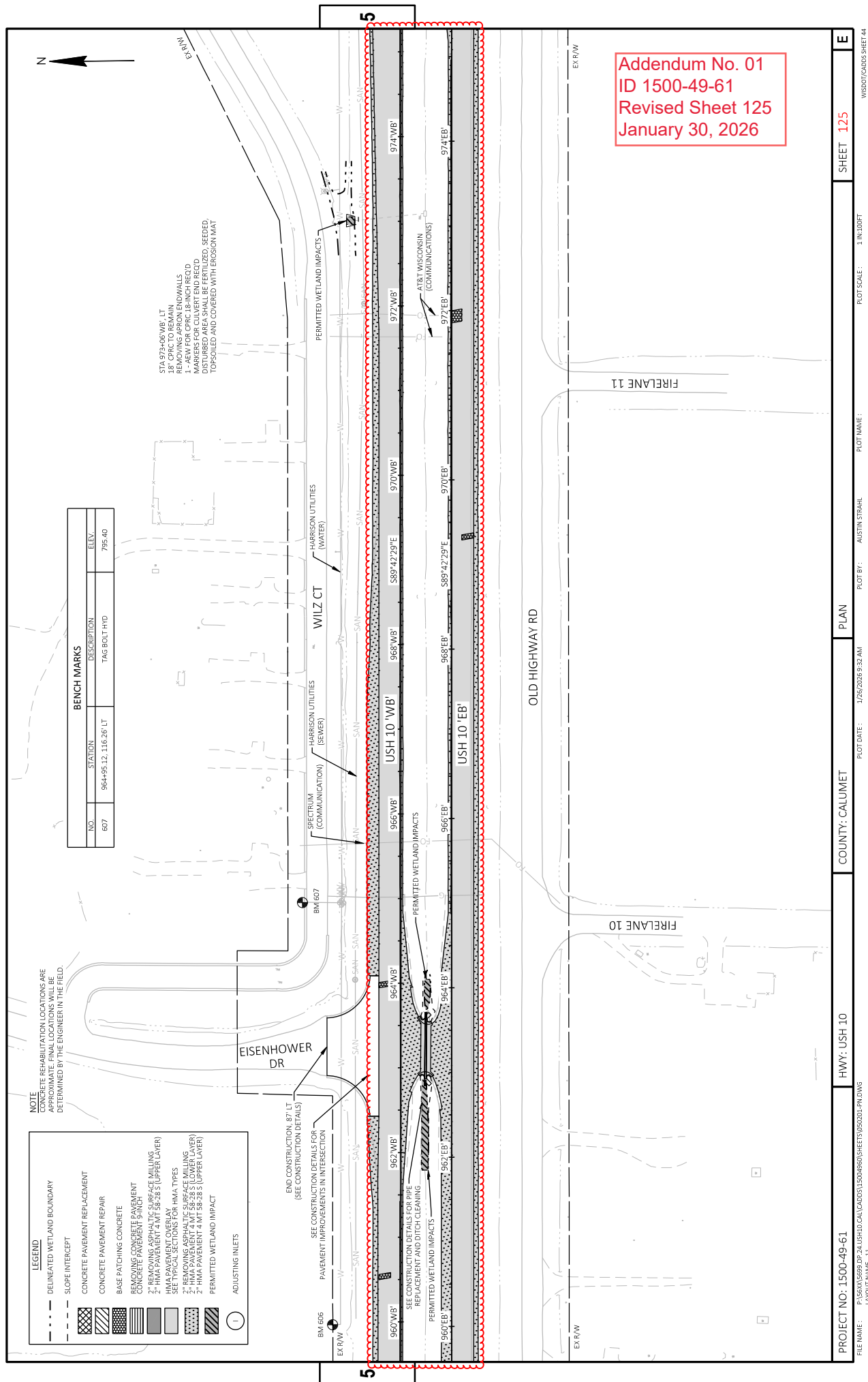
Addendum No. 01  
ID 1500-49-61  
Revised Sheet 122  
January 30, 2026

BENCH MARKS			
NO.	STATION	DESCRIPTION	ELEV.
604	923+92.80 'WB', 42.08' LT	SOUTH BOLD ON SIGNAL BASE	779.17
605	925+40.62 'WB', 343.55' LT	HMOD MON DE 7797	780.50



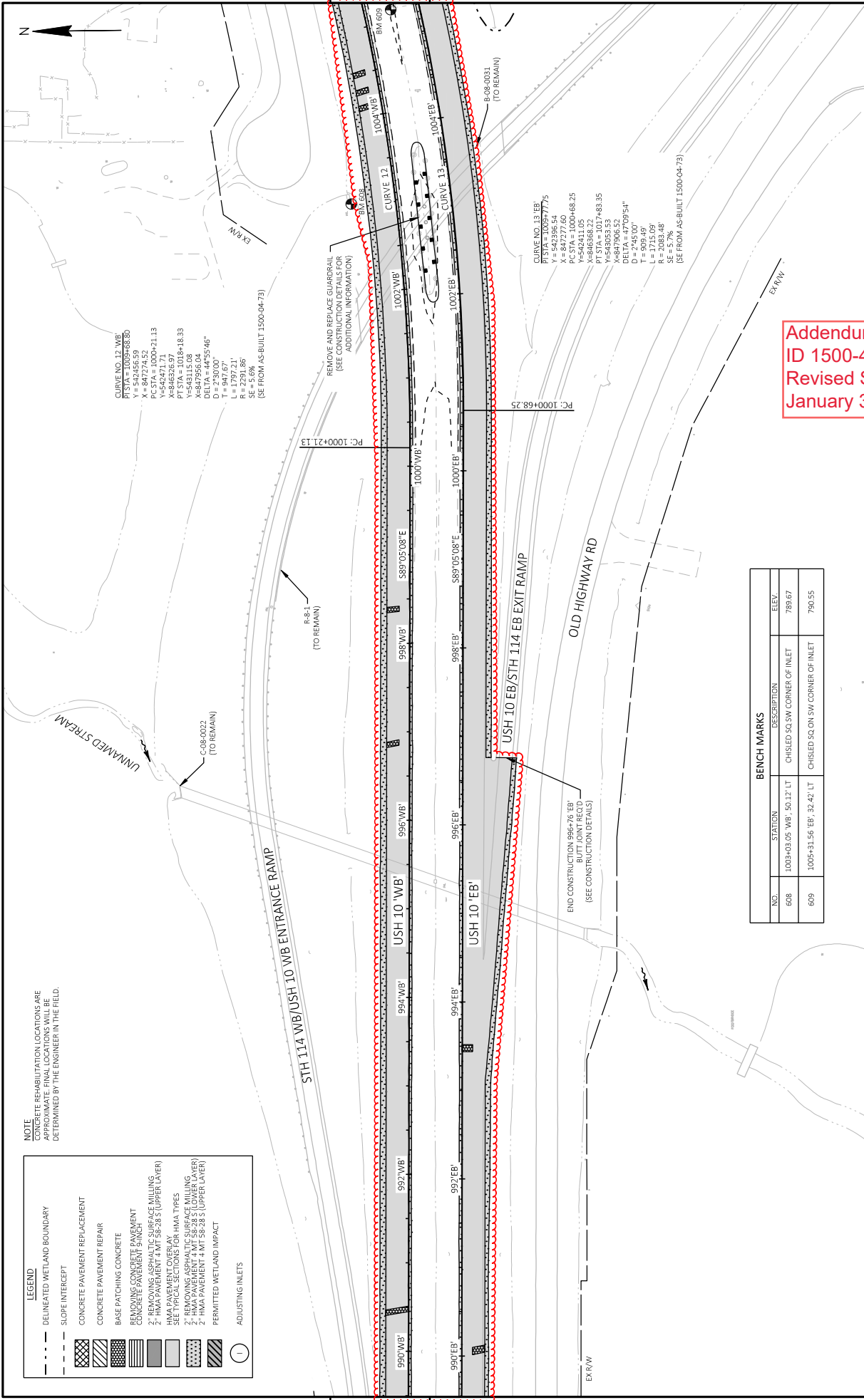












NOTE  
CONCRETE REHABILITATION LOCATIONS ARE  
DETERMINED BY THE ENGINEER IN THE FIELD.

**LEGEND**

- DELIMITED WETLAND BOUNDARY
- SLOPE INTERCEPT
- CONCRETE PAVEMENT REPLACEMENT
- CONCRETE PAVEMENT REPAIR
- BASE PATCHING CONCRETE
- REMOVING CONCRETE PAVEMENT
- CONCRETE PAVEMENT FINISH
- CONCRETE PAVEMENT MILLING
- 2" HMA PAVEMENT 4" MT 58-28 S (UPPER LAYER)
- HMA PAVEMENT OVERLAY
- SEE TYPICAL SECTIONS FOR HMA TYPES
- 2" REMOVING ASPHALTIC SURFACE MILLING (ASPH)
- 2" HMA PAVEMENT 4" MT 58-28 S (UPPER LAYER)
- PERMITTED WETLAND IMPACT
- ADJUSTING INLETS

BENCH MARKS			
NO.	STATION	DESCRIPTION	ELEV.
608	1003+03.05' WB, 50.12' LT	CHISELED SQ. SW CORNER OF INLET	789.67
609	1005+31.56' EB, 32.42' LT	CHISELED SQ. ON SW CORNER OF INLET	790.55

Addendum No. 01  
ID 1500-49-61  
Revised Sheet 128  
January 30, 2026

NOTE

THE REHABILITATION LOCATIONS ARE  
APPROXIMATE. FINAL LOCATIONS WILL BE  
DETERMINED BY THE ENGINEER IN THE FIELD.

SEE MISCELLANEOUS QUANTITIES FOR  
QUANTITIES OF BASE PATCHING CONCRETE  
SHOES.

LEGEND	
	DELIMITED WETLAND BOUNDARY
	SLOPE INTERCEPT
	CONCRETE PAVEMENT REPLACEMENT
	CONCRETE PAVEMENT REPAIR
	BASE PATCHING CONCRETE
	CONCRETE PAVEMENT REPAIR
	2" REMOVING ASPHALTIC SURFACE MILLING
	2" HMA PAVEMENT 4 MT 58-28 S (UPPER LAYER)
	HMA PAVEMENT OVERLAY
	SEE PROJECT MANUAL FOR HMA TYPES
	2" REMOVING ASPHALTIC SURFACE MILLING
	2" HMA PAVEMENT 4 MT 58-28 S (LOWER LAYER)
	2" HMA PAVEMENT 4 MT 58-28 S (UPPER LAYER)
	PERMITTED WETLAND IMPACT
	ADJUSTING INLETS

CURVE NO. 12 'WB'  
PT STA = 1013+92.41  
Y = 542396.54  
X = 847274.52  
PC STA = 1000+21.13  
Y = 542471.71  
PT STA = 1018+18.33  
Y = 543115.08  
X = 847955.04  
DELTA = 47°09'54"  
L = 547.67  
T = 1797.21'  
R = 2291.86'  
(SEE FROM AS-BUILT 1500-04-73)

END CONSTRUCTION, 113' LT  
BUTT JOINT REQ'D  
(SEE CONSTRUCTION DETAILS)

STA 1013+23 'WB' LT  
18" CPVC TO REMAIN  
(CLEANING ENDWALL, NORTH SIDE ONLY)  
WARNERS FOR CULVERT END REQ'D

CURVE NO. 13 'EB'  
PT STA = 1009+77.75  
Y = 542396.54  
X = 847274.52  
PC STA = 1000+21.13  
Y = 542471.71  
PT STA = 1017+43.35  
X = 846368.22  
DELTA = 47°09'54"  
L = 547.67  
T = 1797.21'  
R = 2291.86'  
(SEE FROM AS-BUILT 1500-04-73)

STA 1005+31 'EB' RT  
18" CPVC TO REMAIN  
(CLEANING ENDWALL, SOUTH SIDE)  
BUTT JOINT REQ'D  
(SEE CONSTRUCTION DETAILS)

CURVE NO. 13 'EB'  
PT STA = 1009+77.75  
Y = 542396.54  
X = 847274.52  
PC STA = 1000+21.13  
Y = 542471.71  
PT STA = 1017+43.35  
X = 846368.22  
DELTA = 47°09'54"  
L = 547.67  
T = 1797.21'  
R = 2291.86'  
(SEE FROM AS-BUILT 1500-04-73)

STB 114 WB EXIT/USH 10  
ENTRANCE RAMP

END CONSTRUCTION, 60' RT  
BUTT JOINT REQ'D  
(SEE CONSTRUCTION DETAILS)

EX R/W

EX R/W

PROJECT NO: 1500-49-61

HWY: USH 10

COUNTY: CALUMET

PLAN

PLOT BY: AUSTIN STRAHL

PLOT NAME: 1/27/2026 1:37 PM

SHEET 128

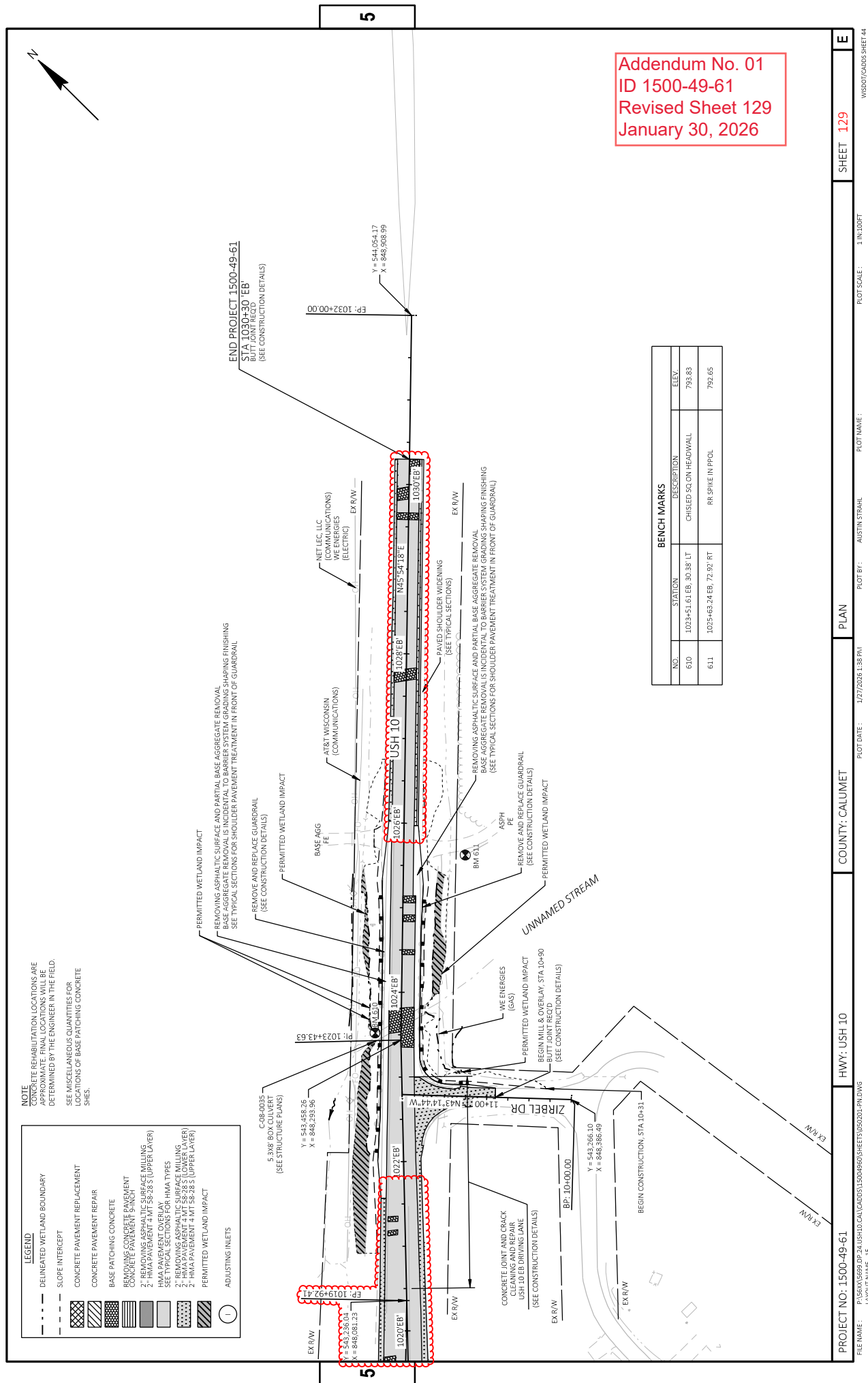
E

FILE NAME: P:\56X\5699 DP 24 USH10.CAL\CA05\15004960\5699052001-PN.DWG

LAYOUT NAME: 14

PLOT SCALE: 1 IN=100 FT

WISDOT/CADDS SHEET 144





## Proposal Schedule of Items

Page 1 of 13

Proposal ID: 20260210024 Project(s): 1500-49-60, 1500-49-61

Federal ID(s): N/A, N/A

SECTION: 0001

Contract Items

Alt Set ID:

Alt Mbr ID:

Proposal Line Number	Item ID Description	Approximate Quantity and Units	Unit Price	Bid Amount
0002	203.0100 Removing Small Pipe Culverts	1.000 EACH	_____.	_____.
0004	204.0100 Removing Concrete Pavement	1,025.000 SY	_____.	_____.
0006	204.0105 Removing Concrete Pavement Butt Joints	520.000 SY	_____.	_____.
0008	204.0110 Removing Asphaltic Surface	3,667.000 SY	_____.	_____.
0010	204.0115 Removing Asphaltic Surface Butt Joints	500.000 SY	_____.	_____.
0012	204.0120 Removing Asphaltic Surface Milling	50,740.000 SY	_____.	_____.
0014	204.0150 Removing Curb & Gutter	1,595.000 LF	_____.	_____.
0016	204.0155 Removing Concrete Sidewalk	90.000 SY	_____.	_____.
0018	204.0165 Removing Guardrail	1,405.000 LF	_____.	_____.
0020	204.0180 Removing Delineators and Markers	3.000 EACH	_____.	_____.
0022	204.9060.S Removing (item description) 01. Apron Endwalls	3.000 EACH	_____.	_____.
0024	211.0101 Prepare Foundation for Asphaltic Paving (project) 01. 1500-49-60	1.000 EACH	_____.	_____.
0026	211.0101 Prepare Foundation for Asphaltic Paving (project) 02. 1500-49-61	1.000 EACH	_____.	_____.
0028	211.0400 Prepare Foundation for Asphaltic Shoulders	5.000 STA	_____.	_____.



## Proposal Schedule of Items

Page 3 of 13

Proposal ID: 20260210024 Project(s): 1500-49-60, 1500-49-61

Federal ID(s): N/A, N/A

SECTION: 0001

Contract Items

Alt Set ID:

Alt Mbr ID:

Proposal Line Number	Item ID Description	Approximate Quantity and Units	Unit Price	Bid Amount
0060	450.4000 HMA Cold Weather Paving	1,555.000 TON	_____.	_____.
0062	455.0605 Tack Coat	10,495.000 GAL	_____.	_____.
0064	460.0105.S HMA Percent Within Limits (PWL) Test Strip Volumetrics	1.000 EACH	_____.	_____.
0066	460.0110.S HMA Percent Within Limits (PWL) Test Strip Density	1.000 EACH	_____.	_____.
0068	460.2005 Incentive Density PWL HMA Pavement	6,548.000 DOL	1.00000	6,548.00
0070	460.2007 Incentive Density HMA Pavement Longitudinal Joints	4,710.000 DOL	1.00000	4,710.00
0072	460.2010 Incentive Air Voids HMA Pavement	17,265.000 DOL	1.00000	17,265.00
0074	460.6224 HMA Pavement 4 MT 58-28 S	17,265.000 TON	_____.	_____.
0076	465.0110 Asphaltic Surface Patching	503.000 TON	_____.	_____.
0078	465.0315 Asphaltic Flumes	15.000 SY	_____.	_____.
0080	465.0510 Asphaltic Rumble Strips, Shoulder Divided Roadway	43,645.000 LF	_____.	_____.
0082	465.0520 Asphaltic Rumble Strips, Shoulder	1,825.000 LF	_____.	_____.
0084	465.0560 Asphaltic Rumble Strips, Centerline	600.000 LF	_____.	_____.
0086	520.8700 Cleaning Culvert Pipes	35.000 EACH	_____.	_____.
0088	521.1618 Apron Endwalls for Culvert Pipe Sloped Side Drains Steel 18-Inch 10 to 1	2.000 EACH	_____.	_____.