



Wisconsin Department of Transportation

January 9, 2026

Division of Transportation Systems Development

Bureau of Project Development
4822 Madison Yards Way, 4th Floor South
Madison, WI 53705

Telephone: (608) 266-1631
Facsimile (FAX): (608) 266-8459

NOTICE TO ALL CONTRACTORS:

Proposal #48: 8100-01-72, WISC 2026164
Menomonie - Ridgeland
IH 94 to CTH D
STH 25
Dunn County

Letting of January 13, 2026

This is Addendum No. 01, which provides for the following:

Special Provisions:

| Added Special Provisions | |
|--------------------------|---|
| Article No. | Description |
| 39 | Reinstall Salvaged Guardrail Rail, Item SPV.0060.03 |
| 40 | Concrete Curb & Gutter 48-Inch Special, Item SPV.0090.02 |
| 41 | Reinstall Salvaged Guardrail End Treatments, Item SPV.0090.03 |

| Deleted Special Provisions | |
|----------------------------|--|
| Article No. | Description |
| 37 | Ditch Cleaning, Item SPV.0090.02 |
| 38 | Concrete Curb & Gutter 48-Inch Special, Item SPV.0090.03 |

Schedule of Items:

| Revised Bid Item Quantities | | | | | |
|-----------------------------|---------------------------------------|------|----------------------------------|------------------------------|-------------------------------|
| Bid Item | Item Description | Unit | Proposal Total Prior to Addendum | Proposal Quantity Change (-) | Proposal Total After Addendum |
| 205.1000 | Excavation Common | CY | 59 | 47 | 106 |
| 614.0400 | Adjusting Steel Plate Beam Guard | LF | 2,530 | -100 | 2,430 |
| 614.0920 | Salvaged Rail | LF | 1,980 | -850 | 1,130 |
| 614.0950 | Replacing Guardrail Posts and Blocks | EA | 416 | 38 | 454 |
| 614.0951 | Replacing Guardrail Rail and Hardware | LF | 2,080 | -1,827 | 253 |

| Added Bid Item Quantities | | | | | |
|----------------------------------|---|------|----------------------------------|----------------|-------------------------------|
| Bid Item | Item Description | Unit | Proposal Total Prior to Addendum | Quantity Added | Proposal Total After Addendum |
| SPV.0060.03 | Reinstall Salvaged Guardrail End Treatments | EA | 0 | 19 | 19 |
| SPV.0090.03 | Reinstall Salvaged Guardrail Rail | LF | 0 | 1,130 | 1,130 |

Plan Sheets:

| Revised Plan Sheets | |
|-------------------------------|---|
| Plan Sheet | Plan Sheet Title (brief description of changes to sheet) |
| 12, 14 | Finished Typical Sections (Updated typical section notes for beam guard work) |
| 25 | Intersection Details (Updated note for signal loop pavement) |
| 91 | Miscellaneous Quantities (Updated earthwork quantities for approach slabs) |
| 97 | Miscellaneous Quantities (Updated beam guard quantities for item changes) |
| 109, 111, 113, 114, 115 | Plan Details and Erosion Control (Updated notes for beam guard work) |

The responsibility for notifying potential subcontractors and suppliers of these changes remains with the prime contractor.

Sincerely,

Mike Coleman

Proposal Development Specialist
Proposal Management Section

ADDENDUM NO. 01

8100-01-72

January 9, 2026

Special Provisions

37. Deleted

38. Deleted

39. Reinstall Salvaged Guardrail End Treatments, Item SPV.0060.03.

A Description

This special provision describes reinstalling guardrail end treatments salvaged on the project.

B Materials

Furnish missing or damaged components compatible with the existing manufacturer.

C Construction

Reinstall guardrail end treatments according to standard spec 614.3. Replace any existing guardrail and hardware deemed unsalvageable by the engineer upon inspection. Replace any contractor damaged materials at no cost to the department.

D Measurement

The department will measure Reinstall Salvaged Guardrail End Treatments by each individual end treatment, acceptably completed.

E Payment

The department will pay for measured quantities at the contract unit price under the following bid item:

| ITEM NUMBER DESCRIPTION | UNIT |
|---|------|
| SPV.0060.03 Reinstall Salvaged Guardrail End Treatments | EACH |

Payment is full compensation for disposing of unwanted or damaged materials; for reinstalling the salvaged end treatment, rail, and hardware; for replacing any contractor-damaged material; and for restoring the site.

40. Concrete Curb & Gutter 48-Inch Special, Item SPV.0090.02

A Description

This special provision describes providing constructing curb and gutter at the locations shown in the plans, or as directed by the engineer.

B Materials

Furnish concrete that conforms to the requirements for concrete curb and gutter according to standard spec 601. Provide QMP for class II ancillary concrete as specified in standard spec 716.

C Construction

Construct according to the requirements of standard spec 601.

D Measurement

The department will measure Concrete Curb & Gutter 48-Inch Special by the linear foot, acceptably completed.

E Payment

The department will pay for measured quantities at the contract unit price under the following bid item:

| ITEM NUMBER | DESCRIPTION | UNIT |
|-------------|--|------|
| SPV.0090.02 | Concrete Curb & Gutter 48-Inch Special | LF |

Payment is full compensation according to standard spec 601.

41. Reinstall Salvaged Guardrail Rail, Item SPV.0090.03.

A Description

This special provision describes reinstalling guardrail rail salvaged on the project.

B Materials

Furnish missing or damaged components compatible with the existing manufacturer.

C Construction

Reinstall guardrail according to standard spec 614.3. Replace any existing guardrail and hardware deemed unsalvageable by the engineer upon inspection. Replace any contractor damaged materials at no cost to the department.

D Measurement

The department will measure Reinstall Salvaged Guardrail Rail, completed according to the contract, by the linear foot, acceptably completed.

E Payment

The department will pay for measured quantities at the contract unit price under the following bid item:

| ITEM NUMBER | DESCRIPTION | UNIT |
|-------------|-----------------------------------|------|
| SPV.0090.03 | Reinstall Salvaged Guardrail Rail | LF |

Payment is full compensation for disposing of unwanted or damaged materials; for reinstalling the salvaged rail and hardware; for replacing any contractor-damaged material; and for restoring the site.

Schedule of Items

Attached, dated January 9, 2026, are the revised Schedule of Items Pages 1, 5, and 13.

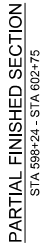
Plan Sheets

The following 8½ x 11-inch sheets are attached and made part of the plans for this proposal:

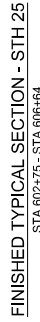
Revised: 12, 14, 25, 91, 97, 109, 111, 113, 114, 115.

END OF ADDENDUM

*



PARTIAL FINISHED SECTION
STA 597+19'S' - STA 602+75'S'



PARTIAL FINISHED SECTION
STA 602+75'S - STA 606+55'S
STA 608+34'S - STA 616+02'S

PARTIAL FINISHED SECTION
STA 602+75 - STA 606+60
STA 608+39 - STA 616+08

© ASPHALTIC RUMBLE STRIPS,
CENTERLINE

PROJECT NO: 8100-01-72

HWY: STH 25

COUNTY: DUNN

PLOT DATE: 1/5/2026 10:03 AM

D TYPICAL SECTIONS

PLOT BY : KL ENGINEERING PLOT NAME :

PLOT SCALE : 1 IN.:10 FT

E

Addendum No. 01
ID 8100-01-72
Revised Sheet 12
January 9, 2026

**** VARY LOWER HMA LAYER THICKNESS AT EDGE OF CIR LIMITS TO MATCH TOP OF OVERLAY ON CIR AS NEEDED, TAPER TO 2.75" THICKNESS ON TOP OF EXISTING PAVEMENT**



PARTIAL
FINISHED TYPICAL SECTION

STA 656+50 - STA 658+79
STA 706+46 - STA 711+51
STA 740+45 - STA 745+99
STA 754+13 - STA 756+68
STA 762+99 - STA 764+25
STA 765+32 - STA 766+58
STA 77+25 - STA 773+80

**PARTIAL
FINISHED TYPICAL SECTION**

STA 706+17'S - STA 711+21'S
STA 734+35'S - STA 739+48'S
STA 740+06'S - STA 746+36'S
STA 754+24'S - STA 757+53'S
STA 762+99'S - STA 764+25'S
STA 765+32'S - STA 766+58'S
STA 772+56'S - STA 774+73'S

LEGEND

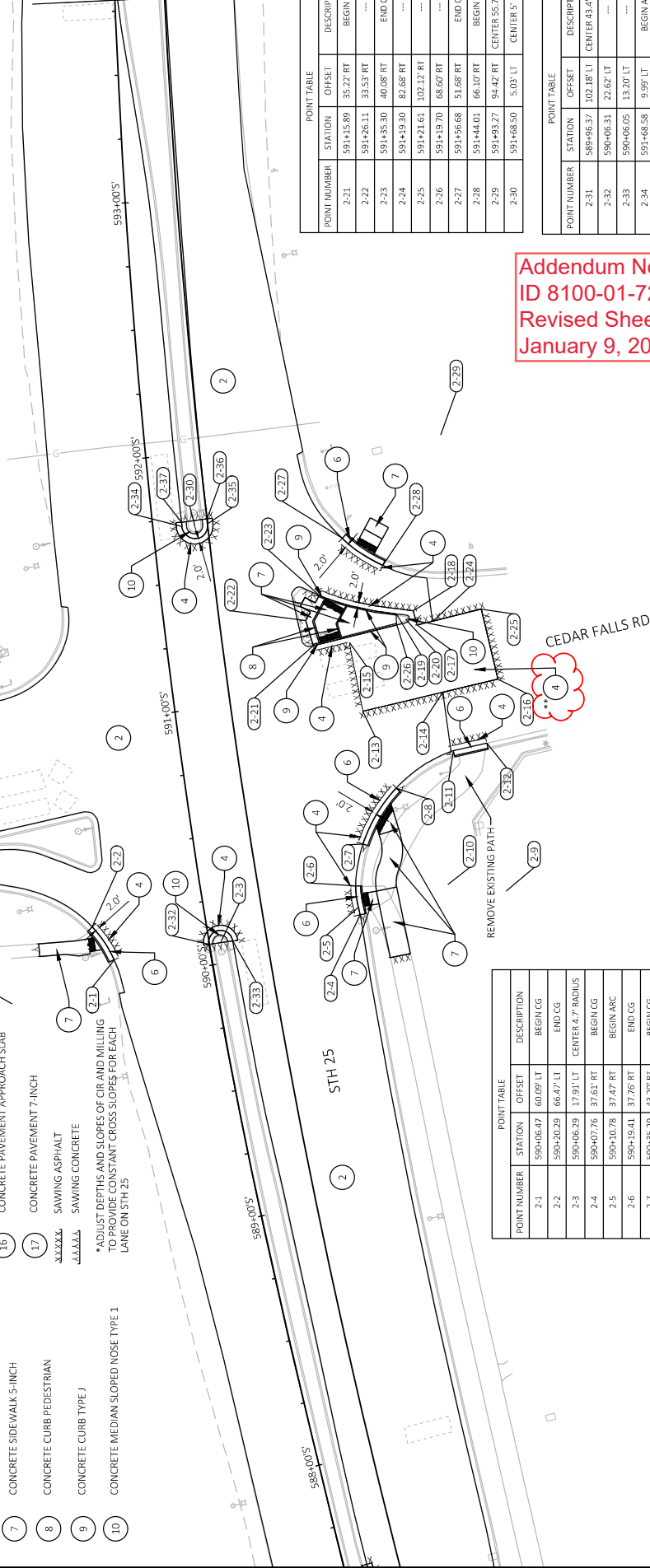
- 1 HMA PAVEMENT, 2.50-INCH OVER REMOVING CONC SURF PARTIAL DEPTH
- 2 HMA PAVEMENT, 3.50-INCH OVER REMOVING ASPHALTIC SURF MILLING
- 3 CONCRETE CURB & GUTTER 48-INCH SPECIAL
- 4 ASPHALTIC SURFACE, 7-INCH OVER BASE AGGREGATE DENSE 1 1/4-INCH, 8-INCH
- 5 CONCRETE CURB & GUTTER 30-INCH TYPE A
- 6 CONCRETE CURB & GUTTER 30-INCH TYPE D
- 7 CONCRETE SIDEWALK 5-INCH
- 8 CONCRETE CURB PEDESTRIAN
- 9 CONCRETE CURB TYPE J
- 10 CONCRETE MEDIAN SLOPED NOSE TYPE 1
- 11 CONCRETE MEDIAN SLOPED NOSE TYPE 2
- 12 HMA PAVEMENT, 2.75-INCH OVER COLD-IN-PLACE RECYCLING PAVEMENT PARTIAL DEPTH, 4-INCH*
- 13 HMA PAVEMENT, 3.50-INCH OVER REMOVING ASPHALTIC SURF MILLING, DEPTH VARIES*
- 14 CONCRETE CURB & GUTTER 4-INCH SLOPED TYPE TBT
- 15 CONCRETE CURB & GUTTER 4-INCH SLOPED TYPE TBT
- 16 CONCRETE PAVEMENT APPROACH SLAB
- 17 CONCRETE PAVEMENT 7-INCH SAWING ASPHALT SAWING CONCRETE

* ADJUST DEPTHS AND SLOPES OF CIR AND MILLING TO PROVIDE CONSTANT CROSS SLOPES FOR EACH LANE ON STH 25

| POINT TABLE | | |
|--------------------|-----------|------------|
| POINT NUMBER | STATION | OFFSET |
| 2-11 | 590+66.60 | 83.60' RT |
| 2-12 | 590+67.68 | 97.05' RT |
| 2-13 | 590+87.44 | 50.91' RT |
| 2-14 | 590+90.47 | 82.79' RT |
| 2-15 | 591+15.45 | 49.28' RT |
| 2-16 | 590+92.63 | 104.89' RT |
| 2-17 | 591+18.57 | 76.45' RT |
| 2-18 | 591+24.45 | 75.75' RT |
| 2-19 | 591+24.17 | 68.91' RT |
| 2-20 | 591+21.69 | 72.24' RT |
| CENTER 1.5' RADIUS | | |

SUNSET ST

MATCH LINE STA 593+75



| POINT TABLE | | |
|---------------------|-----------|-----------|
| POINT NUMBER | STATION | OFFSET |
| 2-1 | 590+06.47 | 60.09' LT |
| 2-2 | 590+20.29 | 66.47' LT |
| 2-3 | 590+06.29 | 17.91' LT |
| 2-4 | 590+07.76 | 37.61' RT |
| 2-5 | 590+10.78 | 37.47' RT |
| 2-6 | 590+19.41 | 37.76' RT |
| 2-7 | 590+35.29 | 43.20' RT |
| 2-8 | 590+55.24 | 59.41' RT |
| 2-9 | 590+07.42 | 95.20' RT |
| 2-10 | 590+13.85 | 73.21' RT |
| CENTER 32.7' RADIUS | | |

| POINT TABLE | | |
|---------------------|-----------|------------|
| POINT NUMBER | STATION | OFFSET |
| 2-21 | 591+15.89 | 35.22' RT |
| 2-22 | 591+26.11 | 33.53' RT |
| 2-23 | 591+35.30 | 40.08' RT |
| 2-24 | 591+59.30 | 82.68' RT |
| 2-25 | 591+21.61 | 102.12' RT |
| 2-26 | 591+19.70 | 68.60' RT |
| 2-27 | 591+56.68 | 51.68' RT |
| 2-28 | 591+44.01 | 66.10' RT |
| 2-29 | 591+93.27 | 94.42' RT |
| 2-30 | 591+68.50 | 5.03' LT |
| CENTER 55.7' RADIUS | | |

| POINT TABLE | | |
|---------------------|-----------|------------|
| POINT NUMBER | STATION | OFFSET |
| 2-31 | 589+96.37 | 102.18' LT |
| 2-32 | 590+06.31 | 22.62' LT |
| 2-33 | 590+06.05 | 13.20' LT |
| 2-34 | 591+68.58 | 9.99' LT |
| 2-35 | 591+68.58 | 0.13' RT |
| 2-36 | 591+70.57 | 0.13' RT |
| 2-37 | 591+70.28 | 9.99' LT |
| CENTER 43.4' RADIUS | | |

Addendum No. 01
ID 8100-01-72
Revised Sheet 25
January 9, 2026

** BASE AGGREGATE DENSE 1 1/4-INCH NOT REQUIRED

| DIVISION | FROM/TO STATION | LOCATION | 205.0100 COMMON EXCAVATION | | SALVAGED/UNUSABLE PAVEMENT MATERIAL (4) | AVAILABLE MATERIAL (5) | EXPANDED EBS BACKFILL (6) | | SELECT CRUSHED MATERIAL (10) TON | UNEXPANDED FILL | EXPANDED FILL (7) | | MASS ORDINATE +/- (8) | WASTE |
|----------------------|--------------------|------------------------|-------------------------------|-----------------------|---|------------------------------|---------------------------------|----------------|---|--------------------|----------------------|---|-----------------------------|-------|
| | | | CUT (2) | EBS EXCAVATION (3) | | | FACTOR 1.30 | FACTOR 1.30 | | | | | | |
| | | | | | | | | | | | | | | |
| 1-1 | 574+71 - 577+17 | STH 25 - BEAM GUARD | 55 | 4 | 12 | 43 | 5 | 0 | 10 | 0 | 0 | 0 | 43 | 43 |
| 1-2 | 606+46 - 606+64 | STH 25 - APPROACH SLAB | 23 | 0 | 0 | 23 | 0 | 0 | 0 | 0 | 0 | 0 | 23 | 23 |
| 1-3 | 608+30 - 608+48 | STH 25 - APPROACH SLAB | 24 | 0 | 0 | 24 | 0 | 0 | 0 | 0 | 0 | 0 | 24 | 24 |
| GRAND TOTAL | | | 102 | 4 | 12 | 90 | 5 | 0 | 10 | 0 | 0 | 0 | 90 | 90 |
| TOTAL COMMON EXC 106 | | | | | | | | | | | | | | |

NOTES:

- (1) COMMON EXCAVATION IS THE SUM OF THE CUT AND EBS EXCAVATION COLUMNS. ITEM NUMBER 205.0100
- (2) SALVAGED/UNUSABLE PAVEMENT MATERIAL IS INCLUDED IN CUT.
- (3) EBS EXCAVATION TO BE BACKFILLED WITH SELECT CRUSHED MATERIAL.
- (4) SALVAGED/UNUSABLE PAVEMENT MATERIAL
- (5) AVAILABLE MATERIAL = CUT - SALVAGED/UNUSABLE PAVEMENT MATERIAL
- (6) EXPANDED EBS BACKFILL - THIS IS TO BE FILLED WITH SELECT CRUSHED MATERIAL. EBS BACKFILL FACTOR = 1.30. ITEM NUMBER 312.0110
- (7) EXPANDED FILL FACTOR = 1.25
- (8) THE MASS ORDINATE + OR - QTY CALCULATED FOR THE DIVISION. PLUS QUANTITY INDICATES AN EXCESS OF MATERIAL WITHIN THE DIVISION. MINUS INDICATES A SHORTAGE OF MATERIAL WITHIN THE DIVISION.
- (9) FACTORS USED TO COMPUTE ANTICIPATED WASTE AND THE COMPUTED WASTE VOLUME IDENTIFIED ARE FOR GENERAL INFORMATION ONLY.
- (10) SELECT CRUSHED MATERIAL QUANTITY SHOWN HERE FOR INFORMATION ONLY. SEE BASE AGGREGATE DENSE QUANTITY TABLE.

Addendum No. 01
ID 8100-01-72
Revised Sheet 91
January 9, 2026

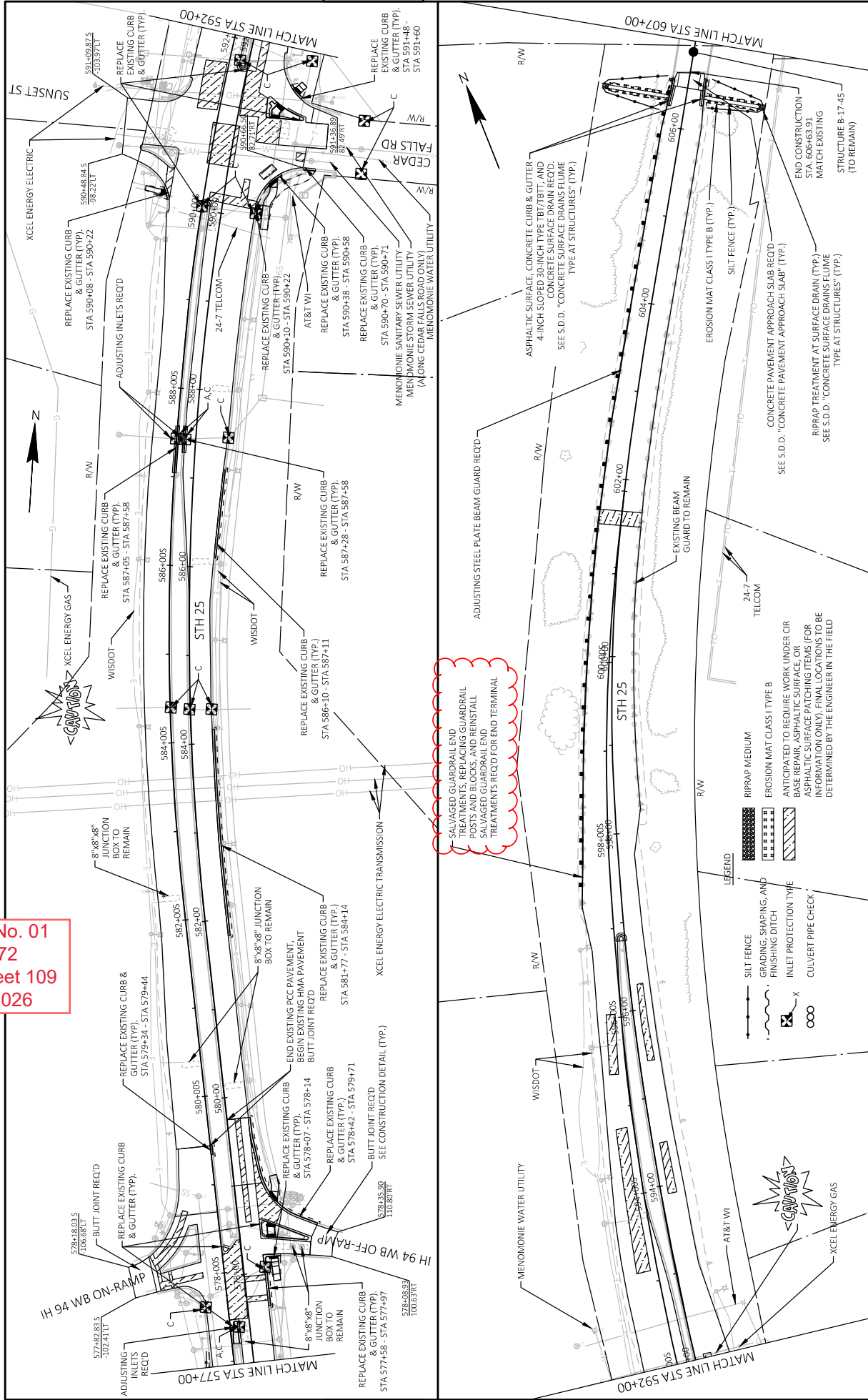
| ADJUSTING COVERS | | | | | | | | | | | |
|------------------|--|----------------|--|----------------|--|----------------|--|----------------|--|----------------|--|
| | | 611.8120 S | | 611.8110 | | 611.8115 | | | | | |
| | | COVER PLATES | | ADJUSTING | | ADJUSTING | | | | | |
| | | TEMPORARY | | COVERS | | COVERS | | | | | |
| | | EACH | | EACH | | EACH | | | | | |
| | | STATION | | LOCATION | | STATION | | LOCATION | | STATION | |
| | | - | | - | | - | | - | | - | |
| | | 574+33 | | 579+75 | | 579+75 | | 579+75 | | 579+75 | |
| | | - | | - | | - | | - | | - | |
| | | 607+00 | | 607+00 | | 607+00 | | 607+00 | | 607+00 | |
| | | - | | - | | - | | - | | - | |
| | | 6 | | 6 | | 6 | | 6 | | 6 | |
| | | PROJECT TOTALS | | PROJECT TOTALS | | PROJECT TOTALS | | PROJECT TOTALS | | PROJECT TOTALS | |
| | | 1 | | 1 | | 1 | | 1 | | 1 | |
| | | 3 | | 3 | | 3 | | 3 | | 3 | |
| | | 5 | | 5 | | 5 | | 5 | | 5 | |
| | | 6 | | 6 | | 6 | | 6 | | 6 | |

| CRASH CUSHIONS TEMPORARY | | | | | | | | | | | |
|--------------------------|--|-----------------------------------|--|-----------------------------------|--|-----------------------------------|--|-----------------------------------|--|-----------------------------------|--|
| | | 614.0905 | | | | | | | | | |
| | | CRASH | | CRASH | | CRASH | | CRASH | | CRASH | |
| | | CUSHIONS | | CUSHIONS | | CUSHIONS | | CUSHIONS | | CUSHIONS | |
| | | TEMPORARY | | TEMPORARY | | TEMPORARY | | TEMPORARY | | TEMPORARY | |
| | | EACH | | EACH | | EACH | | EACH | | EACH | |
| | | STATION | | LOCATION | | STATION | | LOCATION | | STATION | |
| | | - | | - | | - | | - | | - | |
| | | 604+35 | | 610+60 | | 610+60 | | 610+60 | | 610+60 | |
| | | - | | - | | - | | - | | - | |
| | | B-17-45 TEMP SIGNAL | | B-17-45 TEMP SIGNAL | | B-17-45 TEMP SIGNAL | | B-17-45 TEMP SIGNAL | | B-17-45 TEMP SIGNAL | |
| | | 1 | | 1 | | 1 | | 1 | | 1 | |
| | | 2 | | 2 | | 2 | | 2 | | 2 | |
| | | OM-3R (W05-58R) | | OM-3R (W05-58R) | | OM-3R (W05-58R) | | OM-3R (W05-58R) | | OM-3R (W05-58R) | |
| | | TL-3 | | TL-3 | | TL-3 | | TL-3 | | TL-3 | |
| | | BIDIRECTIONAL | | BIDIRECTIONAL | | BIDIRECTIONAL | | BIDIRECTIONAL | | BIDIRECTIONAL | |
| | | L | | L | | L | | L | | L | |
| | | TEMPORARY BARRIER BRIDGE APPROACH | | TEMPORARY BARRIER BRIDGE APPROACH | | TEMPORARY BARRIER BRIDGE APPROACH | | TEMPORARY BARRIER BRIDGE APPROACH | | TEMPORARY BARRIER BRIDGE APPROACH | |
| | | TRAFFIC SHIFTED LT | | TRAFFIC SHIFTED LT | | TRAFFIC SHIFTED LT | | TRAFFIC SHIFTED LT | | TRAFFIC SHIFTED LT | |
| | | 2 | | 2 | | 2 | | 2 | | 2 | |
| | | PROJECT TOTALS | | PROJECT TOTALS | | PROJECT TOTALS | | PROJECT TOTALS | | PROJECT TOTALS | |
| | | 1 | | 1 | | 1 | | 1 | | 1 | |
| | | 2 | | 2 | | 2 | | 2 | | 2 | |

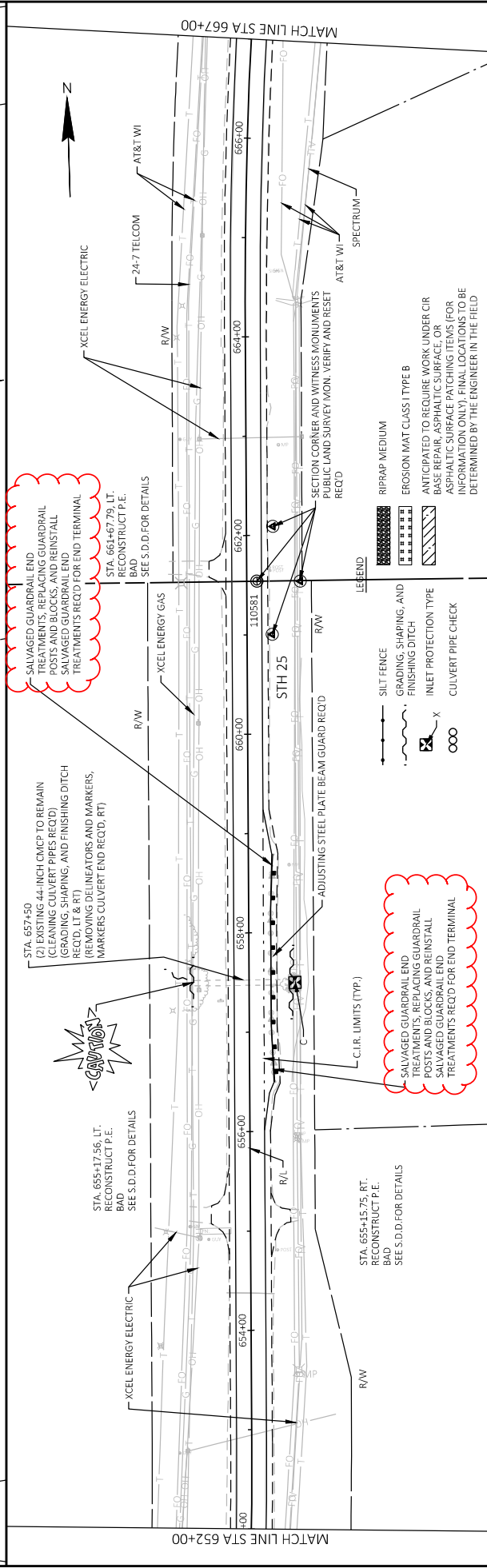
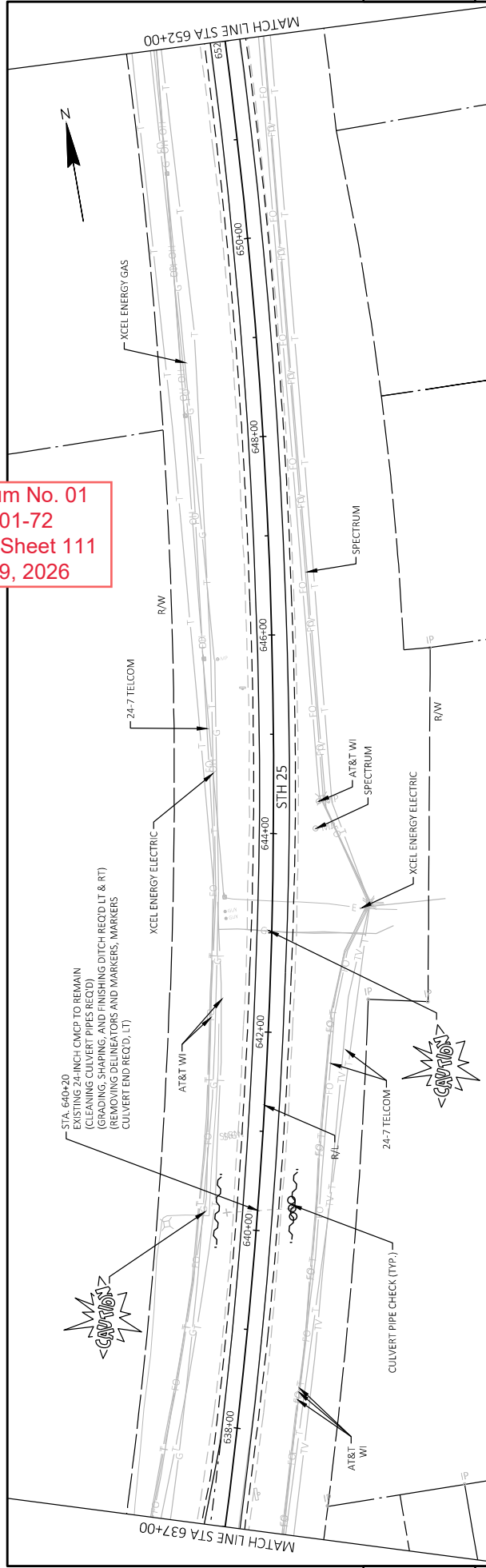
| GUARDRAIL | | | | | | | | | | | |
|-----------|--|----------------|--|----------------|--|----------------|--|----------------|--|----------------|--|
| | | 614.0400 | | 614.0925 | | 614.0950 | | 614.0951 | | 614.2300 | |
| | | ADJUSTING | | SALVAGED | | REPLACING | | REPLACING | | REINSTALL | |
| | | STEEL PLATE | | GUARDRAIL | | GUARDRAIL | | GUARDRAIL | | GUARDRAIL | |
| | | BEAM | | END | | POSTS AND | | RAIL AND | | SALVAGED | |
| | | GUARD | | TREATMENTS | | BLOCKS | | HARDWARE | | RAIL | |
| | | LF | | EACH | | EACH | | LF | | LF | |
| | | STATION | | LOCATION | | STATION | | LOCATION | | STATION | |
| | | - | | - | | - | | - | | - | |
| | | 574+67 | | 597+25 | | 656+50 | | 706+46 | | 734+35 | |
| | | - | | - | | - | | - | | - | |
| | | LT | | RT | | RT | | LT | | LT | |
| | | - | | - | | - | | - | | - | |
| | | 530 | | 460 | | 230 | | 160 | | 80 | |
| | | 740+06 | | 740+45 | | 754+23 | | 754+13 | | 762+99 | |
| | | - | | - | | - | | - | | - | |
| | | 746+36 | | 757+53 | | 756+67 | | 764+25 | | 762+99 | |
| | | - | | - | | - | | - | | - | |
| | | 80 | | 80 | | 80 | | 80 | | 80 | |
| | | 764+25 | | 766+58 | | 765+31 | | 766+58 | | 765+31 | |
| | | - | | - | | - | | - | | - | |
| | | 2,430 | | 1,130 | | 19 | | 454 | | 25 | |
| | | PROJECT TOTALS | | PROJECT TOTALS | | PROJECT TOTALS | | PROJECT TOTALS | | PROJECT TOTALS | |
| | | 1 | | 1 | | 1 | | 1 | | 1 | |
| | | 40 | | 40 | | 40 | | 40 | | 40 | |
| | | MGS THRIE | | MGS THRIE | | MGS THRIE | | MGS THRIE | | MGS THRIE | |
| | | BEAM | | BEAM | | BEAM | | BEAM | | BEAM | |
| | | LF | | LF | | LF | | LF | | LF | |
| | | MGS | | MGS | | MGS | | MGS | | MGS | |
| | | GUARDRAIL | | GUARDRAIL | | GUARDRAIL | | GUARDRAIL | | GUARDRAIL | |
| | | TRANSITION | | TRANSITION | | TRANSITION | | TRANSITION | | TRANSITION | |
| | | TERMINAL EAT | | TERMINAL EAT | | TERMINAL EAT | | TERMINAL EAT | | TERMINAL EAT | |
| | | EACH | | EACH | | EACH | | EACH | | EACH | |

Addendum No. 01
ID 8100-01-72
Revised Sheet 97
January 9, 2026

Addendum No. 01
ID 8100-01-72
Revised Sheet 109
January 9, 2026



Addendum No. 01
ID 8100-01-72
Revised Sheet 111
January 9, 2026



SALVAGED GUARDRAIL END
TREATMENTS, REPLACING GUARDRAIL
POSTS AND BLOCKS, AND REINSTALL
SALVAGED GUARDRAIL END
TREATMENTS REQ'D FOR END TERMINAL

STA. 664+67.79, LT.
RECONSTRUCT P.E.
SEE S.D.D. FOR DETAILS

STA. 657+50
(2) EXISTING 44-INCH CMCP TO REMAIN
(CLEANING CULVERT PIPES REQ'D)
(GRADING, SHAPING, AND FINISHING DITCH
REQ'D, LT & RT)
(REMOVING DELINEATORS AND MARKERS,
MARKERS CULVERT END REQ'D, RT)

STA. 655+17.56, LT.
RECONSTRUCT P.E.
SEE S.D.D. FOR DETAILS

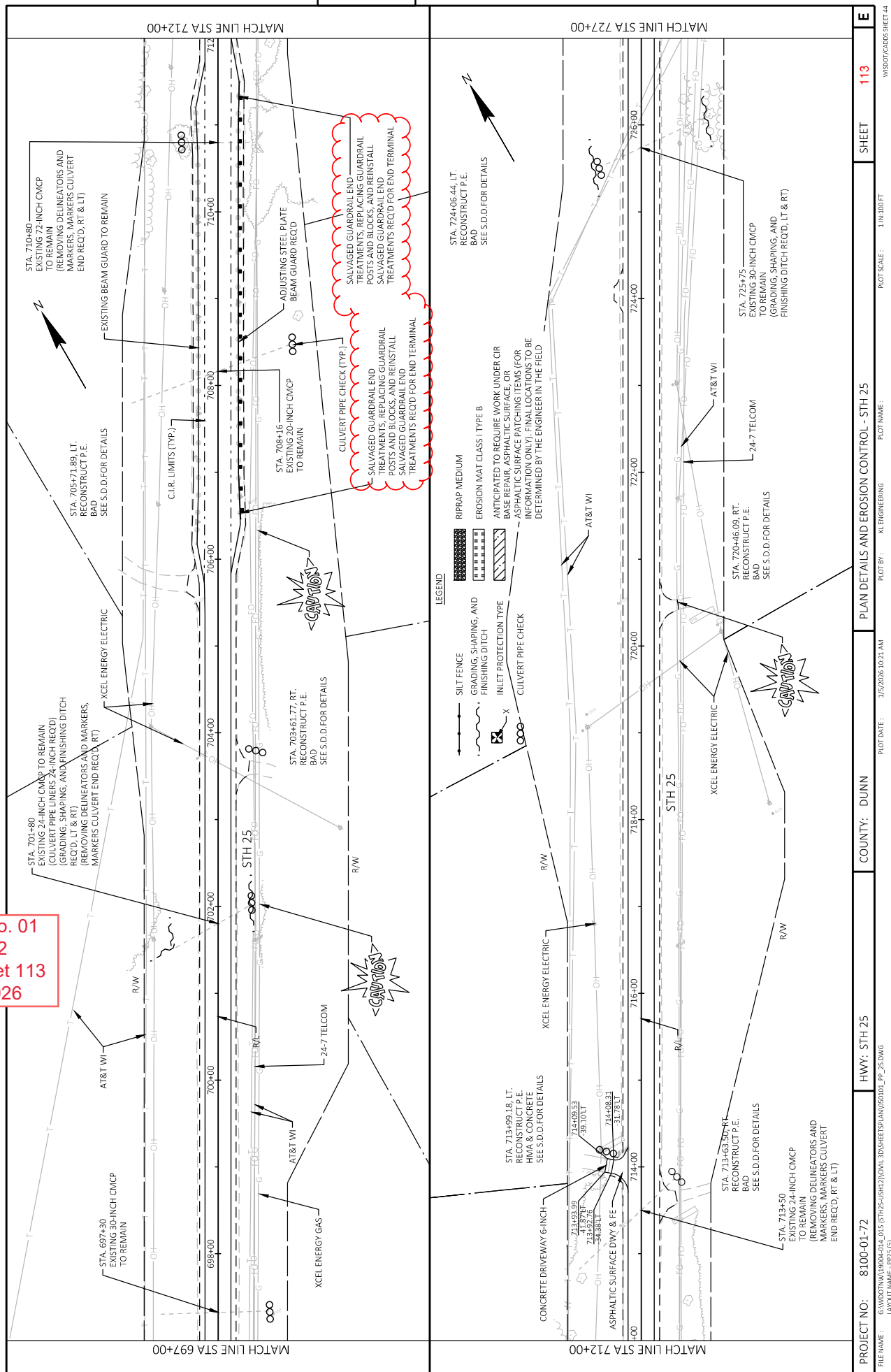
SALVAGED GUARDRAIL END
TREATMENTS, REPLACING GUARDRAIL
POSTS AND BLOCKS, AND REINSTALL
SALVAGED GUARDRAIL END
TREATMENTS REQ'D FOR END TERMINAL

STA. 655+15.25, RT.
BAD
RECONSTRUCT P.E.
SEE S.D.D. FOR DETAILS

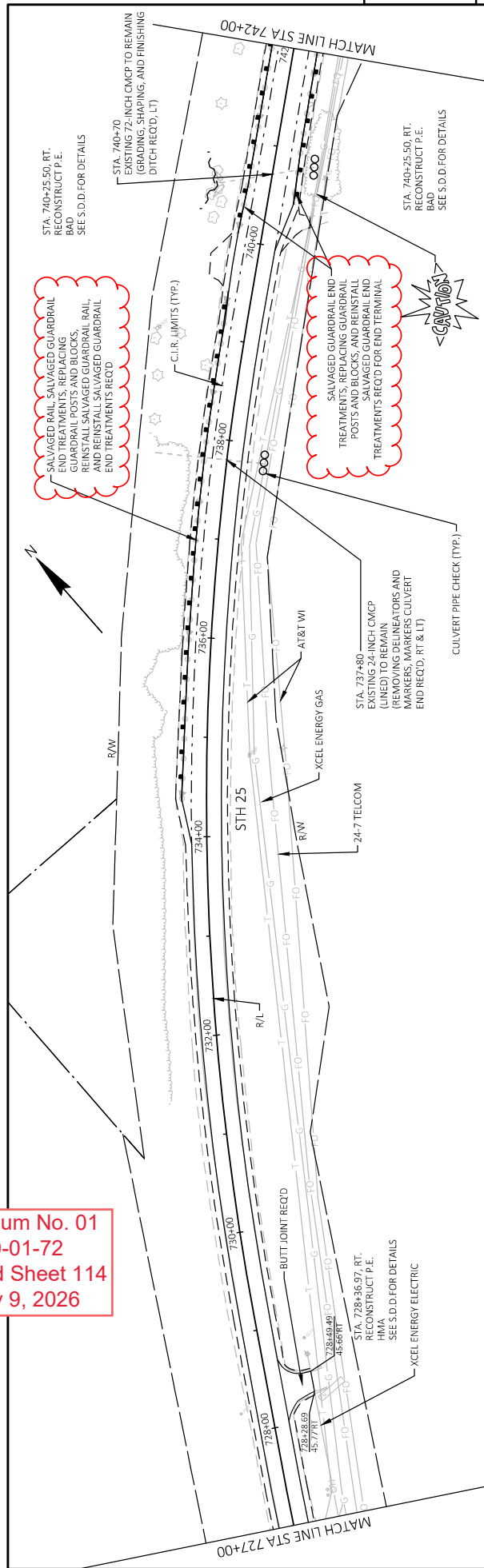
SECTION CORNER AND WITNESS MONUMENTS
PUBLIC LAND SURVEY MON. VERIFY AND RESET
REQ'D

LEGEND
SILT FENCE
GRADING, SHAPING, AND
FINISHING DITCH
INLET PROTECTION TYPE
CULVERT PIPE CHECK
RIPRAP MEDIUM
EROSION MAT CLASS I TYPE B
ANTICIPATED TO REQUIRE WORK UNDER CIR
BASE REPAIR, ASPHALTIC SURFACE, OR
ASPHALTIC SURFACE PATCHING ITEMS (FOR
INFORMATION ONLY). FINAL LOCATIONS TO BE
DETERMINED BY THE ENGINEER IN THE FIELD

Addendum No. 01
ID 8100-01-72
Revised Sheet 113
January 9, 2026

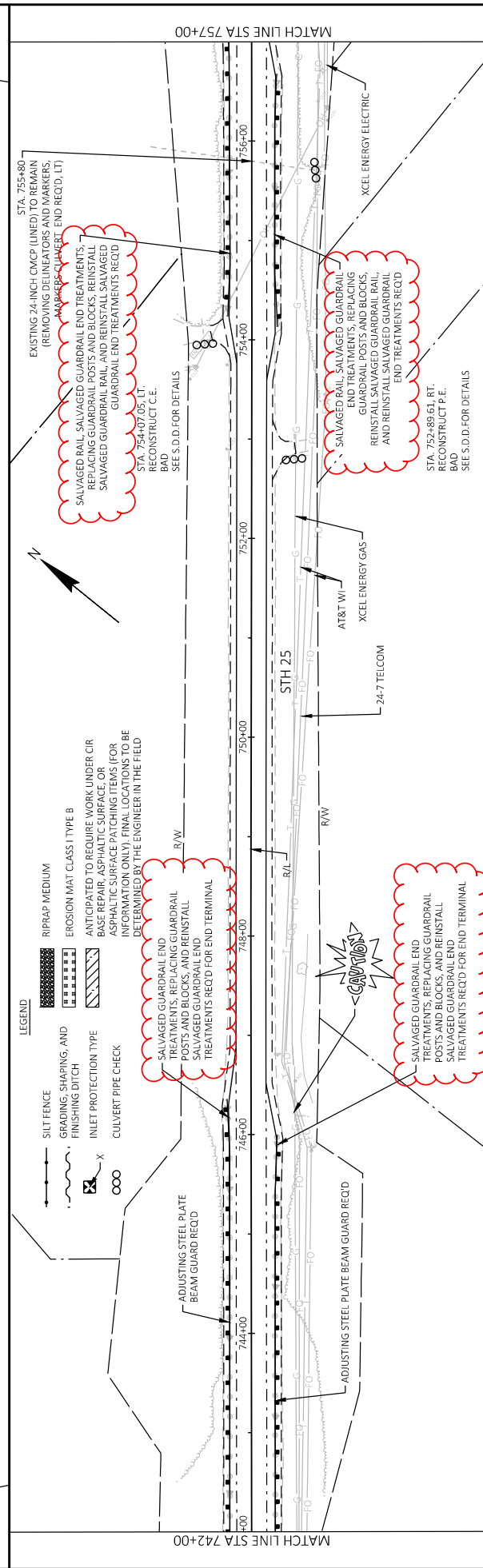


Addendum No. 01
ID 8100-01-72
Revised Sheet 114
January 9, 2026



5

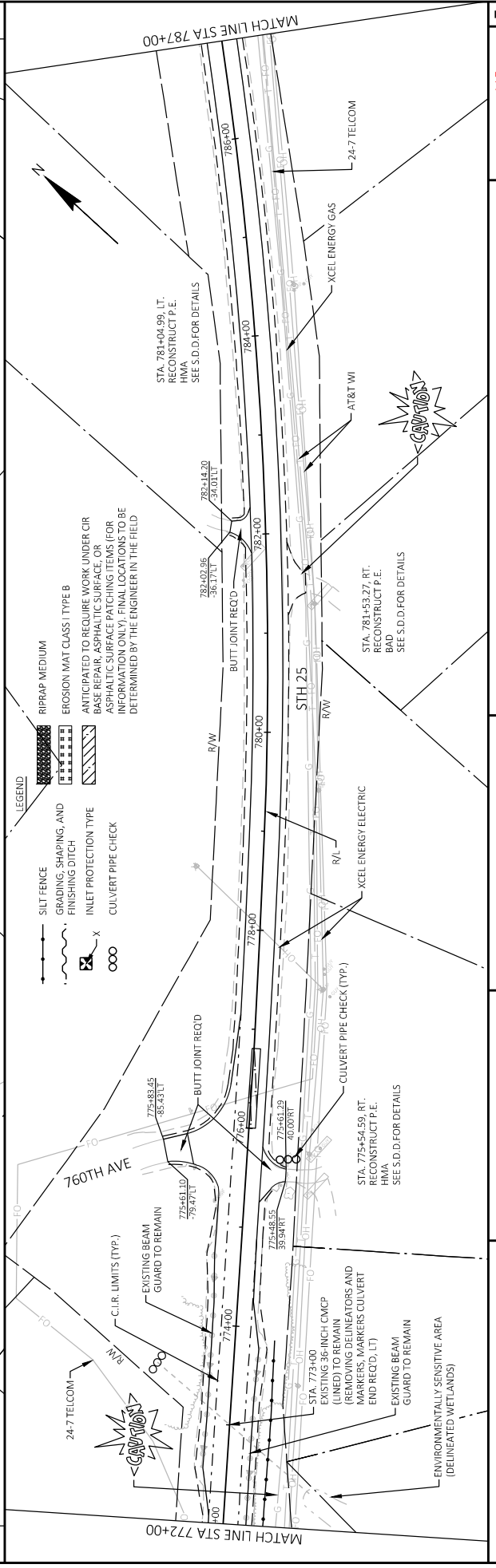
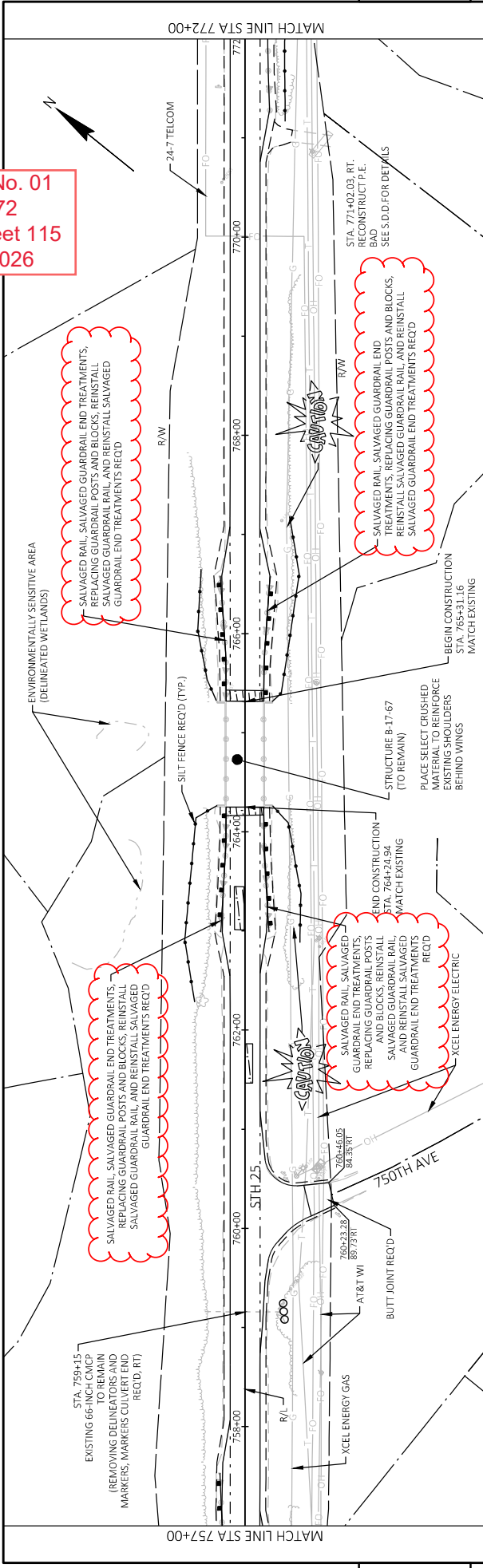
5



LEGEND

| | | | |
|--|---------------------------------------|--|---|
| | SILT FENCE | | RIPRAP MEDIUM |
| | GRADING, SHAPING, AND FINISHING DITCH | | EROSION MAT CLASS TYPE B |
| | INLET PROTECTION TYPE | | ANTICIPATED TO REQUIRE WORK UNDER CIR |
| | CULVERT PIPE CHECK | | BASE REPAIR, ASPHALTIC SURFACE, OR ASPHALTIC SURFACE PATCHING ITEMS FOR INFORMATION ONLY. FINAL LOCATIONS TO BE DETERMINED BY THE ENGINEER IN THE FIELD |

Addendum No. 01
ID 8100-01-72
Revised Sheet 115
January 9, 2026





Proposal Schedule of Items

Page 1 of 13

Proposal ID: 20260113048 Project(s): 8100-01-72

Federal ID(s): WISC 2026164

SECTION: 0001

Contract Items

Alt Set ID:

Alt Mbr ID:

| Proposal Line Number | Item ID Description | Approximate Quantity and Units | Unit Price | Bid Amount |
|----------------------|--|--------------------------------|------------|------------|
| 0002 | 201.0105 Clearing | 5.000 STA | _____. | _____. |
| 0004 | 201.0205 Grubbing | 5.000 STA | _____. | _____. |
| 0006 | 204.0100 Removing Concrete Pavement | 14.000 SY | _____. | _____. |
| 0008 | 204.0105 Removing Concrete Pavement Butt Joints | 1,250.000 SY | _____. | _____. |
| 0010 | 204.0109.S Removing Concrete Surface Partial Depth | 27,500.000 SF | _____. | _____. |
| 0012 | 204.0110 Removing Asphaltic Surface | 440.000 SY | _____. | _____. |
| 0014 | 204.0115 Removing Asphaltic Surface Butt Joints | 2,250.000 SY | _____. | _____. |
| 0016 | 204.0120 Removing Asphaltic Surface Milling | 40,400.000 SY | _____. | _____. |
| 0018 | 204.0150 Removing Curb & Gutter | 1,250.000 LF | _____. | _____. |
| 0020 | 204.0155 Removing Concrete Sidewalk | 160.000 SY | _____. | _____. |
| 0022 | 204.0165 Removing Guardrail | 85.000 LF | _____. | _____. |
| 0024 | 204.0180 Removing Delineators and Markers | 20.000 EACH | _____. | _____. |
| 0026 | 204.0195 Removing Concrete Bases | 4.000 EACH | _____. | _____. |
| 0028 | 205.0100 Excavation Common | 106.000 CY | _____. | _____. |
| 0030 | 211.0101 Prepare Foundation for Asphaltic Paving (project) 01. 8100-01-72 | 1.000 EACH | _____. | _____. |



Proposal Schedule of Items

Page 5 of 13

Proposal ID: 20260113048 Project(s): 8100-01-72

Federal ID(s): WISC 2026164

SECTION: 0001

Contract Items

Alt Set ID:

Alt Mbr ID:

| Proposal Line Number | Item ID Description | Approximate Quantity and Units | Unit Price | Bid Amount |
|----------------------|--|--------------------------------|------------|------------|
| 0120 | 606.0200 Riprap Medium | 12.000 CY | _____. | _____. |
| 0122 | 611.0627 Inlet Covers Type HM | 1.000 EACH | _____. | _____. |
| 0124 | 611.8110 Adjusting Manhole Covers | 4.000 EACH | _____. | _____. |
| 0126 | 611.8115 Adjusting Inlet Covers | 6.000 EACH | _____. | _____. |
| 0128 | 611.8120.S Cover Plates Temporary | 6.000 EACH | _____. | _____. |
| 0130 | 614.0400 Adjusting Steel Plate Beam Guard | 2,430.000 LF | _____. | _____. |
| 0132 | 614.0905 Crash Cushions Temporary | 2.000 EACH | _____. | _____. |
| 0134 | 614.0920 Salvaged Rail | 1,130.000 LF | _____. | _____. |
| 0136 | 614.0925 Salvaged Guardrail End Treatments | 19.000 EACH | _____. | _____. |
| 0138 | 614.0950 Replacing Guardrail Posts and Blocks | 454.000 EACH | _____. | _____. |
| 0140 | 614.0951 Replacing Guardrail Rail and Hardware | 253.000 LF | _____. | _____. |
| 0142 | 614.2300 MGS Guardrail 3 | 25.000 LF | _____. | _____. |
| 0144 | 614.2500 MGS Thrie Beam Transition | 40.000 LF | _____. | _____. |
| 0146 | 614.2610 MGS Guardrail Terminal EAT | 1.000 EACH | _____. | _____. |
| 0148 | 616.0700.S Fence Safety | 1,000.000 LF | _____. | _____. |
| 0150 | 618.0100 Maintenance and Repair of Haul Roads (project) 01. 8100-01-72 | 1.000 EACH | _____. | _____. |



Proposal Schedule of Items

Page 13 of 13

Proposal ID: 20260113048 Project(s): 8100-01-72

Federal ID(s): WISC 2026164

SECTION: 0001

Contract Items

Alt Set ID:

Alt Mbr ID:

| Proposal Line Number | Item ID Description | Approximate Quantity and Units | Unit Price | Bid Amount |
|----------------------|--|--------------------------------|------------|------------|
| 0362 | SPV.0060 Special 01. Remove, Salvage, and Reinstall Traffic Sig Equip (STH 25 & IH 94 WB Ramps) | 1.000 EACH | _____. | _____. |
| 0364 | SPV.0060 Special 02. Remove and Salvage Traffic Signals (STH 25 & Cedar Falls Road) | 1.000 EACH | _____. | _____. |
| 0366 | SPV.0090 Special 01. Grading, Shaping, and Finishing Ditch | 1,085.000 LF | _____. | _____. |
| 0368 | SPV.0090 Special 02. Concrete Curb & Gutter 48-Inch Special | 150.000 LF | _____. | _____. |
| 0370 | SPV.0060 Special 03. Reinstall Salvaged Guardrail End Treatments | 19.000 EACH | _____. | _____. |
| 0372 | SPV.0090 Special 03. Reinstall Salvaged Guardrail Rail | 1,130.000 LF | _____. | _____. |
| Section: 0001 | | | Total: | _____. |
| | | | Total Bid: | _____. |

