



## Wisconsin Department of Transportation

---

July 3, 2025

**Division of Transportation Systems  
Development**

Bureau of Project Development  
4822 Madison Yards Way, 4<sup>th</sup> Floor South  
Madison, WI 53705

Telephone: (608) 266-1631  
Facsimile (FAX): (608) 266-8459

### NOTICE TO ALL CONTRACTORS:

**Proposal #03: 1100-20-77**

**IH 41 Zoo Freeway  
Hampton I/C  
IH 041  
Milwaukee**

**1100-21-70, WISC 2025548**

**IH 41 Zoo Freeway  
Silver Spring Dr to Good Hope Rd  
IH 041  
Milwaukee**

**1100-21-71, WISC 2025549**

**IH 41 Zoo Freeway  
Mill Road Bridges (B-40-0348 & 0349)  
IH 041  
Milwaukee**

**2984-13-77**

**C Milwaukee, Florist Ave  
Bridge Over IH 41 B-40-0369  
LOC STR  
Milwaukee**

### Letting of July 8, 2025

This is Addendum No. 02, which provides for the following:

**Special Provisions:**

Revised Special Provisions	
Article No.	Description
3	Prosecution and Progress
5	Traffic
7	Utilities

**Plan Sheets:**

<b>Revised Plan Sheets</b>	
Plan Sheet	Plan Sheet Title (brief description of changes to sheet)
286 - 288	Revised work areas for Stage 2A
315 - 317	Revised work areas for Stage 2A Nighttime
324 - 326	Revised work areas for Stage 2B
353 - 355	Revised work areas for Stage 2B Nighttime
362 - 364	Revised work areas for Stage 3
369 – 370, 373 - 374	Revised work areas for Stage 3

<b>Added Plan Sheets</b>	
Plan Sheet	Plan Sheet Title (brief description of why sheet was added)
285A	Stage 2A typical section for Structures B-40-213/214/365/366
305A	Stage 2A Ramp Closure
323A	Stage 2B typical section for Structures B-40-213/214/365/366
342A	Stage 2B Ramp Closure

<b>Deleted Plan Sheets</b>	
Plan Sheet	Plan Sheet Title (brief description of why sheet was deleted)
254 - 260	Removed Pre-Stage 1A work moved to Stages 2A/2B
261 – 270	Removed Pre-Stage 1B work moved to Stages 2A/2B

The responsibility for notifying potential subcontractors and suppliers of these changes remains with the prime contractor.

Sincerely,

*Mike Coleman*

Proposal Development Specialist  
Proposal Management Section

**ADDENDUM NO. 01**

**1100-20-77, 1100-21-70/71, 2984-13-77**

**July 3, 2025**

**Special Provisions**

**3. Prosecution and Progress**

*Add the following paragraph after paragraph 3:*

To revise the start date of the winter shutdown for Project ID 1100-20-77/1100-21-70/1100-21-71/2984-13-77, submit a written request to the Engineer at least two weeks before November 15, 2025. The engineer will approve or deny that request based on the conditions cited in the request. Additional Holiday restrictions for Christmas and New Years will apply.

*Delete the following from Schedule of Operations, Project 1100-21-70, 1100-21-71, 2984-13-77:*

**Pre-Stage 1A Construction**

This stage consists of roadway rehabilitation on IH 41 NB & IH 41 SB. More specifically, the work includes the following:

- Bridge overlays and expansion joint replacement on inside half of B-40-365, B-40-366, B-40-213, and B-40-214.
- Roadway work consists base patching inside shoulder and inside lane between structures over UPRR and Carmen Avenue.

**Pre-Stage 1B Construction**

This stage consists of roadway rehabilitation on IH 41 NB & IH 41 SB. More specifically, the work includes the following:

- Bridge overlays and expansion joint replacement on outside half of B-40-365, B-40-366, B-40-213, and B-40-214.
- Ramp work consists base patching, diamond grinding, beam guard replacement and pavement marking for Silver Spring/SB IH 41 exit ramp and Silver Spring/NB IH 41 entrance ramp/auxiliary lane.

*Add the following to Schedule of Operations, Project 1100-21-70, 1100-21-71, 2984-13-77, Stage 2A Construction:*

This stage consists of roadway rehabilitation on IH 41 NB & IH 41 SB. More specifically, the work includes the following:

- Perform inside half of bridge overlay and expansion joint replacement for B-40-365 and bridge overlay for B-40-213.
- Perform outside half of bridge overlay and expansion joint replacement for B-40-366 and bridge overlay for B-40-214.
- Roadway work consists base patching inside shoulder and inside lane between structures over UPRR and Carmen Avenue.

Ramp work consists base patching, diamond grinding, beam guard replacement and pavement marking for Silver Spring/SB IH 41 exit ramp and Silver Spring/NB IH 41 entrance ramp/auxiliary lane.

*Add the following to Schedule of Operations, Project 1100-21-70, 1100-21-71, 2984-13-77, Stage 2B Construction:*

This stage consists of roadway rehabilitation on IH 41 NB & IH 41 SB. More specifically, the work includes the following:

- Perform outside half of bridge overlay and expansion joint replacement for B-40-365 and bridge overlay for B-40-213.
- Perform inside half of bridge overlay and expansion joint replacement for B-40-366 and bridge

overlay for B-40-214.

- Roadway work consists base patching inside shoulder and inside lane between structures over UPRR and Carmen Avenue.

Ramp work consists base patching, diamond grinding, beam guard replacement and pavement marking for Silver Spring/SB IH 41 exit ramp and Silver Spring/NB IH 41 entrance ramp/auxiliary lane.

*Under Prosecution and Progress, replace the Base Patching, Mill and Overlay and Crack Repair paragraph with the following:*

### **Base Patching and Mill and Overlay**

#### **Project 1100-21-70, 1100-21-71, 2984-13-77**

Where only night-time closures are allowed, perform the operations in the order described below:

- Complete base patching before performing Removing Asphaltic Surface Milling.
- Complete Removing Asphaltic Surface Milling and Removing Concrete Surface Partial Depth. Milling of the concrete base patches is incidental to the item Removing Asphaltic Surface Milling.
- Additional base patches may need to be completed after the Removing Asphaltic Surface Milling and Removing Concrete Surface Partial Depth, as identified by the engineer.
- Place the lower layer of HMA prior to opening the lane to traffic. Do not place traffic on milled surface. Additional base patching may be performed prior to the placement of the upper HMA layer as identified by the engineer.
- Place wedging for any drop-offs between the stages of operations.
- Place the upper layer of HMA.

Where daytime and night-time closures are allowed, perform the operations in the order described below:

- Complete Removing Asphaltic Surface Milling and Removing Concrete Surface Partial Depth.
- Perform base patching.
- Place the HMA.

## **5. Traffic.**

*Under Traffic, delete the following from Project 1100-21-70, 1100-21-71, 2984-13-77, Schedule of Operations:*

#### **Pre-Stage 1A Traffic**

- Shift IH 41 NB and SB traffic to the outside of IH 41 SB for construction between Carmen Avenue and Florist Avenue.
- Ramp closures include Silver Spring/IH 41 SB Exit Ramp and Silver Spring/IH 41 NB Entrance Ramp.

#### **Pre-Stage 1B Traffic**

- Shift IH 41 NB and SB traffic to the outside of IH 41 SB for construction between Carmen Avenue and Florist Avenue.
- Ramp closures include Silver Spring/IH 41 SB Exit Ramp and Silver Spring/IH 41 NB Entrance Ramp.

*Under Traffic, add the following to Project 1100-21-70, 1100-21-71, 2984-13-77, Schedule of Operations, Stage 2A Traffic:*

- Shift IH 41 SB traffic to the outside of IH 41 SB for construction between B-40-365 and Carmen Avenue.



- Shift IH 41 NB traffic to the inside of IH 41 NB for construction between B-40-366 and Carmen Avenue.
- Ramp closures include Silver Spring/IH 41 SB Exit Ramp and Silver Spring/IH 41 NB Entrance Ramp. Duration will be 35 days for each ramp at the end of this stage.

*Under Traffic, add the following to Project 1100-21-70, 1100-21-71, 2984-13-77, Schedule of Operations, Stage 2B Traffic:*

- Shift IH 41 SB traffic to the inside of IH 41 SB for construction between B-40-365 and Carmen Avenue.
- Shift IH 41 NB traffic to the outside of IH 41 NB for construction between B-40-366 and Carmen Avenue.
- Ramp closures include Silver Spring/IH 41 SB Exit Ramp and Silver Spring/IH 41 NB Entrance Ramp. Duration will be 35 days for each ramp at the beginning of this stage.

## **7. Utilities.**

*Replace the ID 1100-21-71 information with the following:*

### **ID 1100-21-71**

**The following utility companies have facilities within the project area that need adjustments:**

**Midwest Fiber Network – Communication Line** has facilities within the project limits. MWFN will relocate the fiber line on the north side of Mill Rd. from Station 32+00 to Station 26+00 (and beyond) that is currently in conflict with retaining wall R 40-715 prior to construction. The line will be moved to 30 feet north of centerline with final grade elevations between 760-765 leaving 4-5' of cover. Existing duct will be discontinued in place.

**The following utility companies have facilities within the project area; however, no adjustments are anticipated:**

**AT&T Wisconsin - Communication Line**

**City of Milwaukee - Sewer**

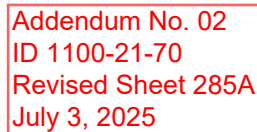
**City of Milwaukee - Water**

**We Energies - Electric**

**We Energies - Gas**

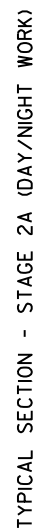
**Wisconsin Independent Network – Communication Line** has an underground communication line in the WisDOT communication duct that runs along US-41.

END OF ADDENDUM



## TYPICAL SECTION - STAGE 2A (DAY/NIGHT WORK)

IH 41



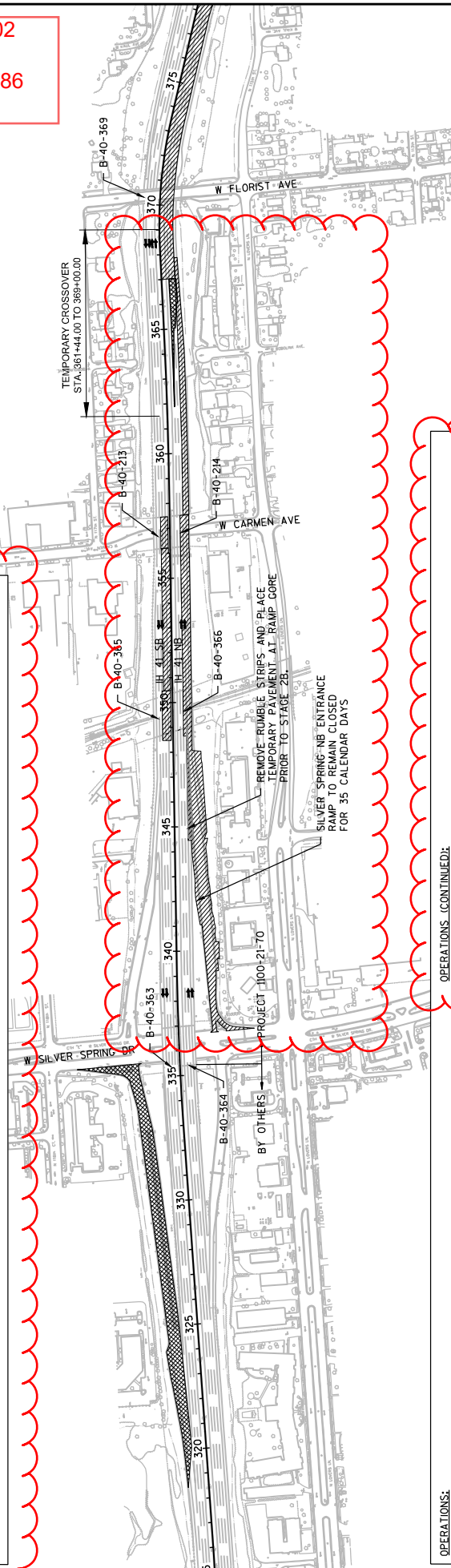
SHEET 285A E



Addendum No. 02  
ID 1100-21-70  
Revised Sheet 286  
July 3, 2025

#### TRAFFIC CONTROL:

- NB TRAFFIC IS CROSSED OVER TO THE SB ROADWAY. TWO LANES ARE MAINTAINED. ONE LANE DURING NIGHTTIME.
- SB TRAFFIC IS SHIFTED TO THE OUTSIDE TO ALLOW SPACE FOR THE NB LANES. TWO LANES ARE MAINTAINED. ONE LANE MAINTAINED DURING NIGHTTIME.
- CLOSE MILL ROAD.
- NIGHTTIME RAMP CLOSURES SHALL NOT CLOSE MULTIPLE RAMP AT THE SAME TIME.
- SILVER SPRING/SB IH 41 ENTRANCE RAMP: NIGHTTIME CLOSURES.
- GOOD HOPE/SB IH 41 ENTRANCE RAMP: NIGHTTIME CLOSURES.
- GOOD HOPE/NB IH 41 ENTRANCE RAMP: NIGHTTIME CLOSURES.
- GOOD HOPE/SB IH 41 EXIT RAMP: NIGHTTIME CLOSURES.
- NB AND EB GOOD HOPE RD: ONE LANE OPEN AND SHIFTED TO THE INSIDE LANE. OUTSIDE LANE CLOSED.
- FOR BRIDGE OVERLAY AND EXPANSION JOINT REPLACEMENT AT B-40-213, SB TRAFFIC IS SHIFTED TO THE OUTSIDE TO ALLOW SPACE FOR INSIDE LANE AND SHOULDER CONSTRUCTION. TWO LANES ARE MAINTAINED.
- FOR BRIDGE OVERLAY AND EXPANSION JOINT REPLACEMENT AT B-40-366, AND BRIDGE OVERLAY AT B-40-214, NB TRAFFIC IS SHIFTED TO THE INSIDE TO ALLOW SPACE FOR OUTSIDE LANE AND SHOULDER CONSTRUCTION. TWO LANES ARE MAINTAINED.
- SILVER SPRING/NB IH 41 ENTRANCE RAMP: 35 CALENDAR DAY CLOSURE.



#### OPERATIONS:

##### WORK IN THIS STAGE CONSISTS OF THE FOLLOWING:

- BRIDGE OVERLAY AND EXPANSION JOINT REPLACEMENT AT IH 41 NB OVER STH 175/APPLETON AVE. SB STRUCTURE B-40-347.
- DEMOLISH IH 41 NB OVER MILL ROAD STRUCTURE B-40-349.
- BRIDGE OVERLAY AND EXPANSION JOINT REPLACEMENT AT IH 41 NB OVER STH 175/APPLETON AVE. SB STRUCTURE B-40-351.
- CONSTRUCTION OF NB APPROACH SLABS AND MILL & OVERLAY MAINLINE PAVEMENT.
- CONSTRUCTION OF NB OUTSIDE SHOULDER AND CONCRETE BARRIER.
- PLACEMENT OF NB STORM SEWER LATERALS - SEE STAGE 2A TYPICALS FOR STATION RANGES.
- CONSTRUCTION OF THE NB STRUCTURES OVER MILL ROAD. B-40-1022, R-40-714, R-40-715.
- PAINTING OF B-40-369 OVER NB LANES.
- PERFORM BASE PATCHING, DIAMOND GRINDING/OVERLAY, AND PAVEMENT MARKINGS FOR SILVER SPRING/SB IH 41 ENTRANCE RAMP, GOOD HOPE/SB IH 41 ENTRANCE RAMP, AND GOOD HOPE/NB IH 41 ENTRANCE RAMP.
- PERFORM HIGH FRICTION SURFACE TREATMENT GOOD HOPE SB EXIT STA 36+60 TO STA 41+92

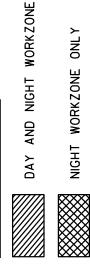
##### OPERATIONS (CONTINUED):

- PERFORM INSIDE HALF OF BRIDGE OVERLAY AND EXPANSION JOINT REPLACEMENT AT B-40-365, AND BRIDGE OVERLAY AT B-40-213.
- PERFORM OUTSIDE HALF OF BRIDGE OVERLAY AND EXPANSION JOINT REPLACEMENT AT B-40-366, AND BRIDGE OVERLAY AT B-40-214.

##### OTHER AVAILABLE WORK THIS STAGE:

- PERFORM BASE PATCHING IN MEDIAN BETWEEN STRUCTURES OVER UPRR AND CARMEN AVE.
- PERFORM BASE PATCHING, DIAMOND GRINDING, BEAM GUARD AND PAVEMENT MARKINGS ALONG SILVER SPRING NB ENTRANCE AND SB EXIT RAMP.
- INSTALL SIGN REPLACEMENTS ON OUTSIDES.
- PERFORM BEAMGUARD REPLACEMENTS.
- PERFORM SLOPE IMPROVEMENTS.
- PERFORM REMOVALS.
- INSTALL PERMANENT PAVEMENT MARKINGS BETWEEN STA. 365+00 TO 417+00.

#### PLAN VIEW LEGEND



PROJECT NO: 1100-21-70

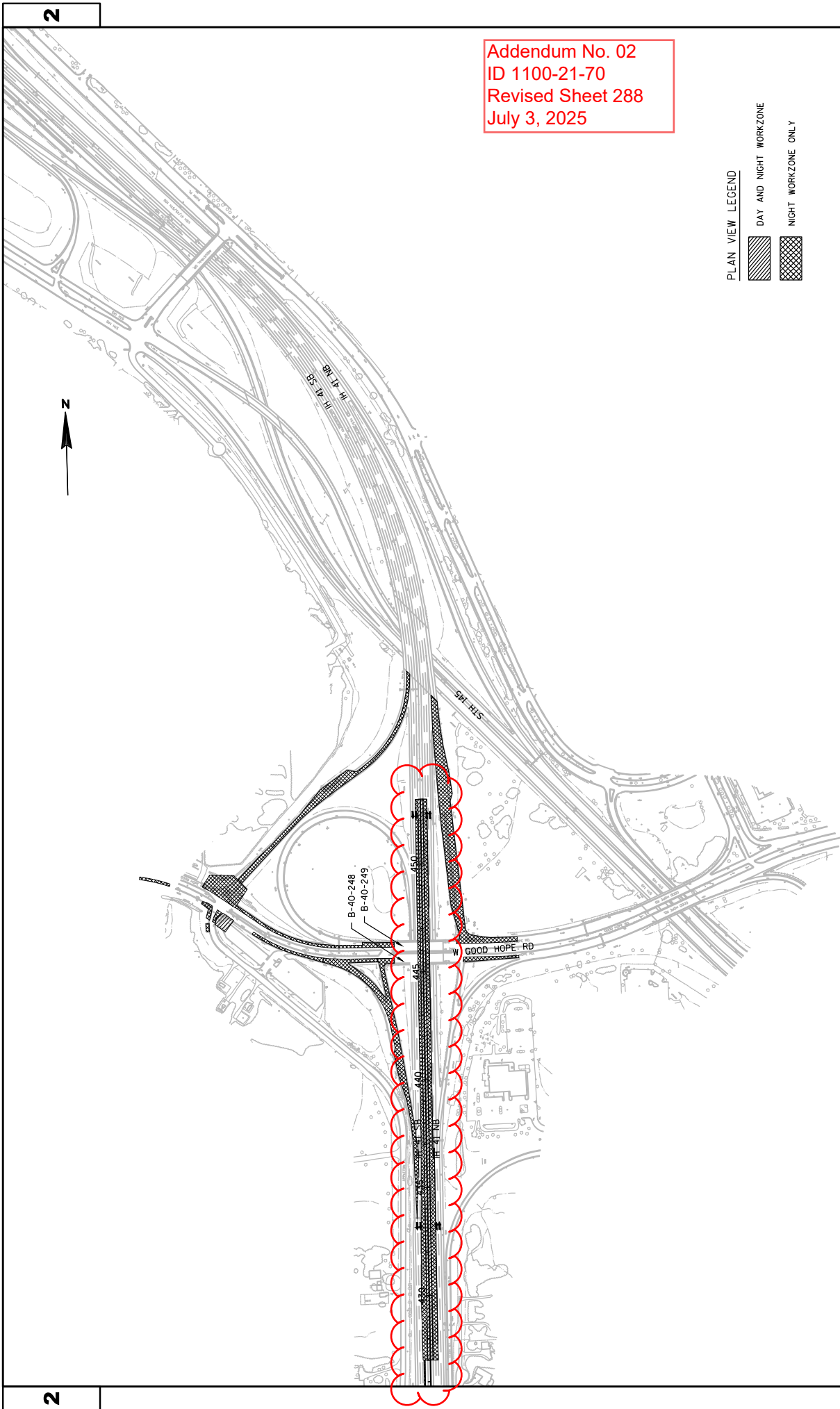
HWY: IH 41

COUNTY: MILWAUKEE

TRAFFIC CONTROL - OVERVIEW STAGE 2A

SHEET 286

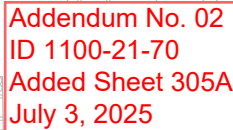




Addendum No. 02  
ID 1100-21-70  
Revised Sheet 288  
July 3, 2025

PLAN VIEW LEGEND  
DAY AND NIGHT WORKZONE  
NIGHT WORKZONE ONLY





CURVE NB2AT2-1  
PI STA = 422+77.68  
Y = 336792.026  
X = 567204.667  
DELTA = 8°11'35"  
D = 100°19'  
L = 1007.9'  
T = 117.71'  
R = 5700.00'  
PC STA = 418+34.07  
Y = 336155.527  
X = 567100.914  
PT STA = 426+84.52  
Y = 337200.232  
X = 567209.057  
BK = N08°48'32.9"E  
AH = N00°36'56.2"E

CURVE NB2AT2-2  
PI STA = 422+77.68  
Y = 336792.026  
X = 567204.667  
DELTA = 8°11'35"  
D = 100°19'  
L = 1007.9'  
T = 117.71'  
R = 5700.00'  
PC STA = 418+34.07  
Y = 336155.527  
X = 567100.914  
PT STA = 426+84.52  
Y = 337200.232  
X = 567209.057  
BK = N08°48'32.9"E  
AH = N00°36'56.2"E

CONNECT CONCRETE BARRIER  
TEMPORARY PRECAST TO EXISTING  
CONCRETE MEDIAN BARRIER  
STA 417+76

CONNECT CONCRETE BARRIER  
TEMPORARY PRECAST TO EXISTING  
CONCRETE MEDIAN BARRIER  
STA 421+61

TEMPORARY PRECAST  
TRENCH DRAIN

APPLETON PL

C/L IH 41

SIGN

+00

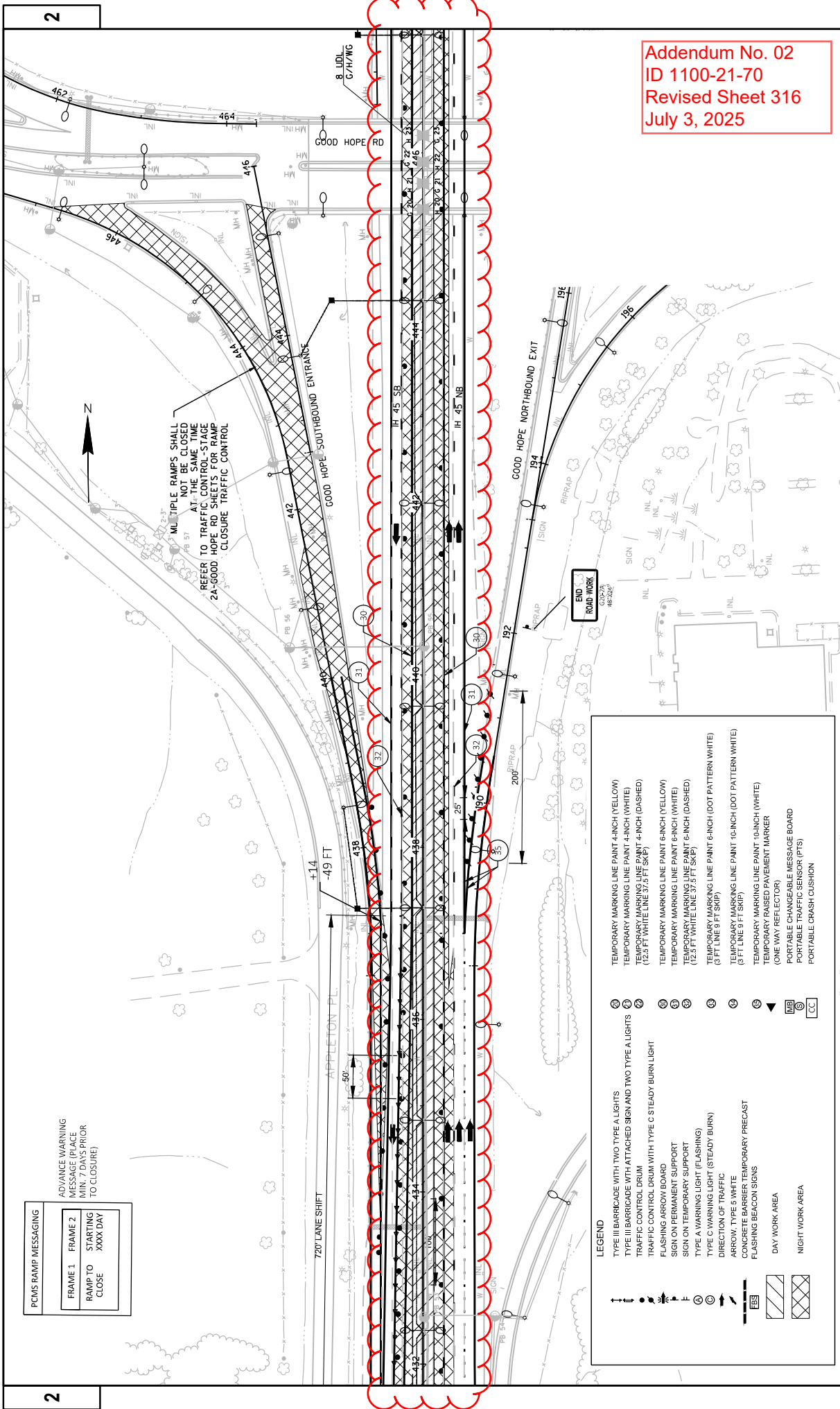
-61 FT

114th ST.

LEGEND

- TYPE III BARRICADE WITH TWO TYPE A LIGHTS
- TRAFFIC CONTROL DRUM
- FLASHING ARROW BOARD
- SIGN ON PERMANENT SUPPORT
- TYPE A WARNING LIGHT (FLASHING)
- TYPE C WARNING LIGHT (STEADY BURN)
- DIRECTION OF TRAFFIC
- ARROW, TYPE 5 WHITE
- CONCRETE BARRIER TEMPORARY PRECAST
- FLASHING BEACON SIGNS
- DAY WORK AREA
- NIGHT WORK AREA
- TEMPORARY MARKING LINE PAINT 4-INCH (YELLOW)
- TEMPORARY MARKING LINE PAINT 4-INCH (WHITE)
- TEMPORARY MARKING LINE PAINT 4-INCH (DASHED) (12.5 FT WHITE LINE 37.5 FT SKIP)
- TEMPORARY MARKING LINE PAINT 6-INCH (YELLOW)
- TEMPORARY MARKING LINE PAINT 6-INCH (WHITE)
- TEMPORARY MARKING LINE PAINT 6-INCH (DASHED) (12.5 FT WHITE LINE 37.5 FT SKIP)
- TEMPORARY MARKING LINE PAINT 6-INCH (DOT PATTERN WHITE) (3 FT LINE 9 FT SKIP)
- TEMPORARY MARKING LINE PAINT 10-INCH (DOT PATTERN WHITE) (3 FT LINE 9 FT SKIP)
- TEMPORARY MARKING LINE PAINT 10-INCH (WHITE)
- TEMPORARY RAISED PAVEMENT MARKER (ONE WAY REFLECTOR)
- PORTABLE CHANGEABLE MESSAGE BOARD
- PORTABLE TRAFFIC SENSOR (PTS)
- PORTABLE CRASH CUSHION

Addendum No. 02  
ID 1100-21-70  
Revised Sheet 315  
July 3, 2025



Addendum No. 02  
ID 1100-21-70  
Revised Sheet 316  
July 3, 2025

PCMS RAMP MESSAGING

FRAME 1	FRAME 2
RAMP TO	STARTING
CLOSE	CLOSE

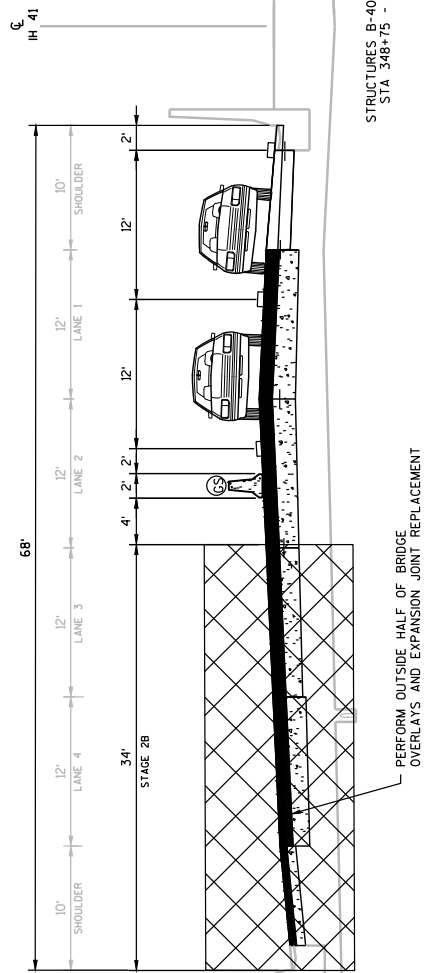
ADVANCE WARNING  
MESSAGE (PLACE  
MIN. 7 DAYS PRIOR  
TO CLOSURE)

- LEGEND**
- TYPE III BARRICADE WITH TWO TYPE A LIGHTS
  - TYPE III BARRICADE WITH ATTACHED SIGN AND TWO TYPE A LIGHTS
  - TRAFFIC CONTROL DRUM
  - TRAFFIC CONTROL DRUM WITH TYPE C STEADY BURN LIGHT
  - FLASHING ARROW BOARD
  - SIGN ON PERMANENT SUPPORT
  - SIGN ON TEMPORARY SUPPORT
  - TYPE A WARNING LIGHT (FLASHING)
  - TYPE C WARNING LIGHT (STEADY BURN)
  - DIRECTION OF TRAFFIC
  - ARROW TYPE 5 WHITE
  - CONCRETE OR METAL TEMPORARY PRECAST
  - FLASHING BEACON SIGNS
  - DAY WORK AREA
  - NIGHT WORK AREA
  - PORTABLE CHANGEBLE MESSAGE BOARD
  - PORTABLE TRAFFIC SENSOR (PTS)
  - PORTABLE CRASH CUSHION
- TEMPORARY MARKING LINE PAINT 4-INCH (YELLOW)
- TEMPORARY MARKING LINE PAINT 4-INCH (WHITE)
- TEMPORARY MARKING LINE PAINT 4-INCH (DASHED)
- TEMPORARY MARKING LINE PAINT 4-INCH (DASHED)
- TEMPORARY MARKING LINE PAINT 6-INCH (YELLOW)
- TEMPORARY MARKING LINE PAINT 6-INCH (WHITE)
- TEMPORARY MARKING LINE PAINT 6-INCH (DASHED)
- TEMPORARY MARKING LINE PAINT 6-INCH (DASHED)
- TEMPORARY MARKING LINE PAINT 6-INCH (DOT PATTERN WHITE)
- TEMPORARY MARKING LINE PAINT 6-INCH (DOT PATTERN WHITE)
- TEMPORARY MARKING LINE PAINT 10-INCH (DOT PATTERN WHITE)
- TEMPORARY MARKING LINE PAINT 10-INCH (WHITE)
- TEMPORARY RAISED PAVEMENT MARKER
- (ONE WAY REFLECTOR)
- PORTABLE CHANGEBLE MESSAGE BOARD
- PORTABLE TRAFFIC SENSOR (PTS)
- PORTABLE CRASH CUSHION



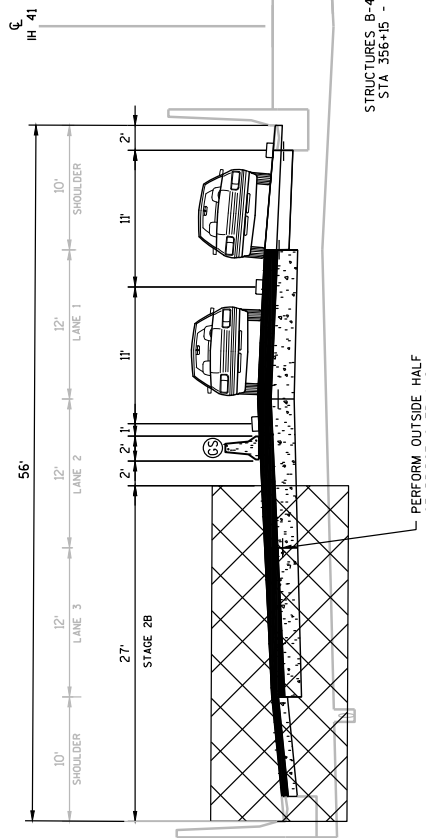
[illegible]

PROJECT NO:	1100-21-70	HWY:	IH 41	COUNTY:	MILWAUKEE	TRAFFIC CONTROL - STAGE 2A NIGHTTIME	PLOT SCALE:	1 IN 100 FT	SHEET	317	E
FILE NAME:	\\93235\441\Silver to Good\HQP\CDL10020\00SHEETS\LAN\20214-SCAN.DWG										
							PLOT DATE:	7/2/2023 2:54 PM	PLOT BY:	ALLAN PAGAOLA	PLOT NAME:



TYPICAL SECTION - STAGE 2B (DAY/NIGHT WORK)

IH 41



TYPICAL SECTION - STAGE 2B (DAY/NIGHT WORK)

20  
IH 41

TRAFFIC CONTROL:

- SB TRAFFIC IS CROSSED OVER TO THE NB ROADWAY. TWO LANES ARE MAINTAINED.
- NB TRAFFIC IS SHIFTED TO THE OUTSIDE SPACE FOR THE NB LANES. TWO LANES ARE MAINTAINED.
- GOOD HOPE/SB IH 41 ENTRANCE LOOP RAMP: NIGHTTIME CLOSURES.
- CLOSE MILL ROAD.
- WB AND EB GOOD HOPE RD: ONE LANE OPEN AND SHIFTED TO THE OUTSIDE LANE; INSIDE LANE CLOSED.
- FOR BRIDGE OVERLAY AND EXPANSION JOINT REPLACEMENT AT B-40-365, AND BRIDGE OVERLAY AT B-40-213. SB TRAFFIC IS SHIFTED TO THE INSIDE TO ALLOW SPACE FOR OUTSIDE LANE AND SHOULDER CONSTRUCTION. TWO LANES ARE MAINTAINED.
- SILVER SPRING/SB IH 41 EXIT RAMP: 35 CALENDAR DAY CLOSURE.
- FOR BRIDGE OVERLAY AND EXPANSION JOINT REPLACEMENT AT B-40-366, AND BRIDGE OVERLAY AT B-40-214. NB TRAFFIC IS SHIFTED TO THE OUTSIDE TO ALLOW SPACE FOR INSIDE LANE AND SHOULDER CONSTRUCTION. TWO LANES ARE MAINTAINED.
- SILVER SPRING/NB IH 41 ENTRANCE RAMP: 35 CALENDAR DAY CLOSURE.

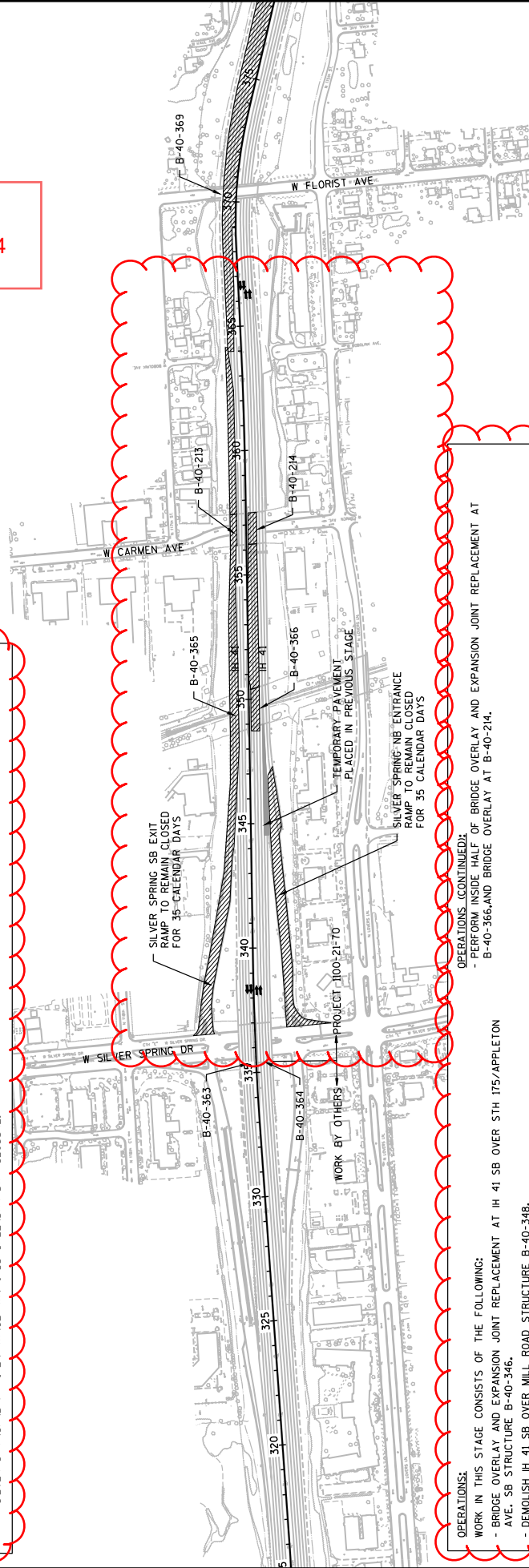
OPERATIONS:

- WORK IN THIS STAGE CONSISTS OF THE FOLLOWING:
- BRIDGE OVERLAY AND EXPANSION JOINT REPLACEMENT AT IH 41 SB OVER 5TH ITS/APPLETON AVE. SB STRUCTURE B-40-346.
  - DEMOLISH IH 41 SB OVER MILL ROAD STRUCTURE B-40-348.
  - BRIDGE OVERLAY AND EXPANSION JOINT REPLACEMENT AT IH 41 SB OVER 5TH ITS/APPLETON AVE. SB STRUCTURE B-40-350.
  - CONSTRUCTION OF SB APPROACH SLABS AND MILL & OVERLAY OF MAINLINE PAVEMENT.
  - HEAT STRAIGHTENING STEEL GIRDERS, STEEL GIRDER REPAIR, AND PAINTING B-40-369 OVER SB LANES.
  - CONSTRUCTION OF SB OUTSIDE SHOULDER AND CONCRETE BARRIER.
  - PLACEMENT OF SB STORM SEWER LATERALS BETWEEN STA 364+00 AND STA 410+00.
  - CONSTRUCTION OF THE SB STRUCTURES OVER MILL ROAD.
  - PERFORM BASE PATCHING, DIAMOND GRINDING/OVERLAY, AND PAVEMENT MARKINGS FOR GOOD HOPE/SB IH 41 ENTRANCE LOOP RAMP.
  - PERFORM HIGH FRICTION SURFACE TREATMENT I 41 SB STA 368+20 TO STA 373+53
  - PERFORM OUTSIDE HALF OF BRIDGE OVERLAY AND EXPANSION JOINT REPLACEMENT AT B-40-365, AND BRIDGE OVERLAY AT B-40-213.

OPERATIONS (CONTINUED):

- PERFORM INSIDE HALF OF BRIDGE OVERLAY AND EXPANSION JOINT REPLACEMENT AT B-40-366 AND BRIDGE OVERLAY AT B-40-214.
- OTHER AVAILABLE WORK THIS STAGE:
- PERFORM BASE PATCHING, DIAMOND GRINDING, BEAM GUARD AND PAVEMENT MARKINGS ALONG SILVER SPRING NB ENTRANCE AND SB EXIT RAMPS.
  - INSTALL SIGN REPLACEMENTS ON OUTSIDE.
  - PERFORM BEAMGUARD REPLACEMENTS.
  - PERFORM SLOPE IMPROVEMENTS.
  - PERFORM REMOVALS.
  - INSTALL PERMANENT PAVEMENT MARKINGS BETWEEN STA. 367+00 TO STA. 417+00.

Addendum No. 02  
ID 1100-21-70  
Revised Sheet 324  
July 3, 2025



PLAN VIEW LEGEND

- DAY AND NIGHT WORKZONE
- NIGHT WORKZONE ONLY

PROJECT NO: 1100-21-70

HWY: IH 41

COUNTY: MILWAUKEE

TRAFFIC CONTROL - OVERVIEW STAGE 2B

SHEET 324

E

FILE NAME : I:\2325 1H41 SILVER TO GOOD HOPE\CD\11002000\SHETS\PLAN\026221-S2B.DWG  
LAYOUT NAME - 026221-S2B - 025001

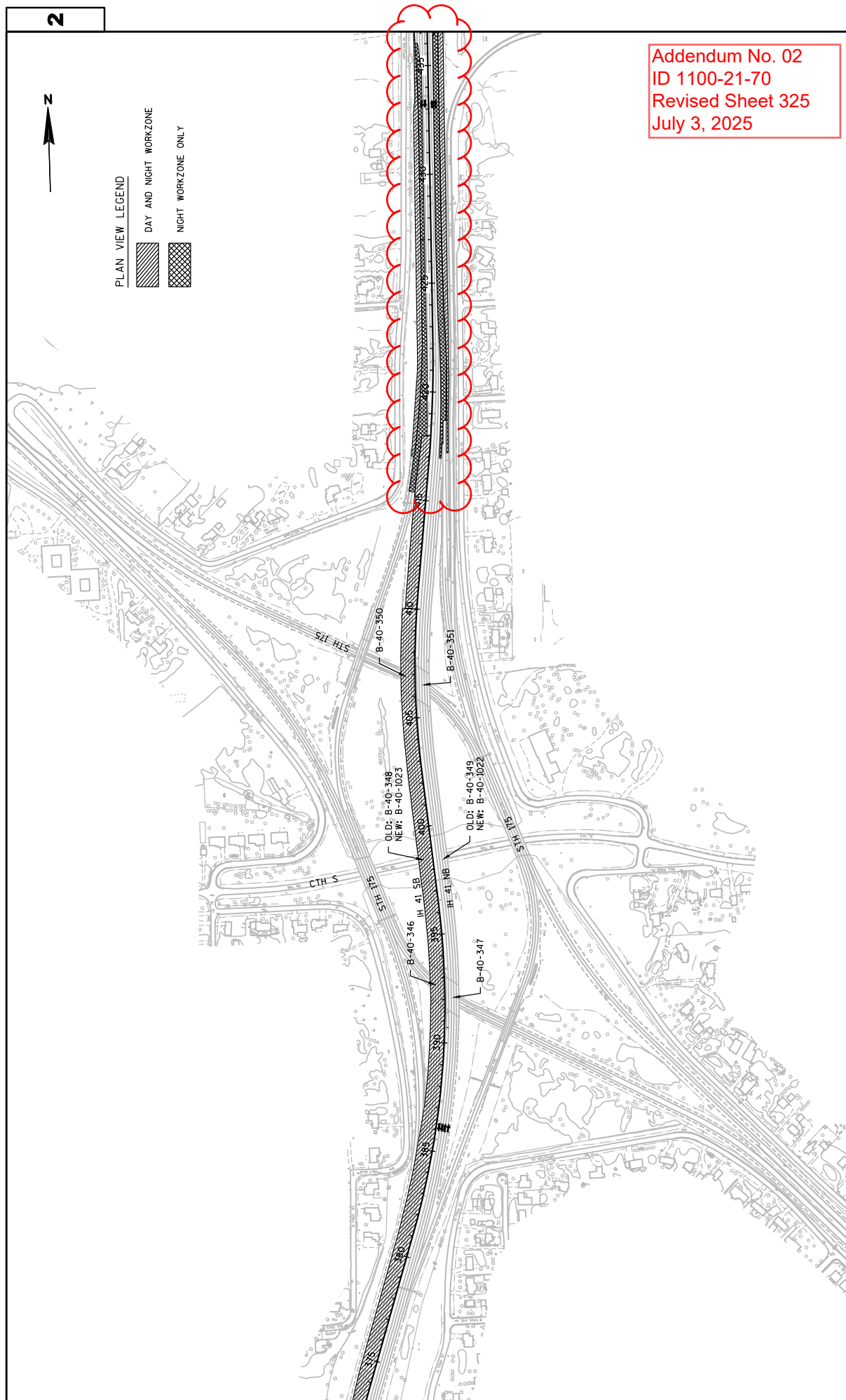
PLOT DATE : 7/2/2025 2:08 PM

PLOT BY : ALLAN PACADA

PLOT SCALE : 1 IN=400 FT

WISDOT/CADDs SHEET 44

Addendum No. 02  
ID 1100-21-70  
Revised Sheet 325  
July 3, 2025

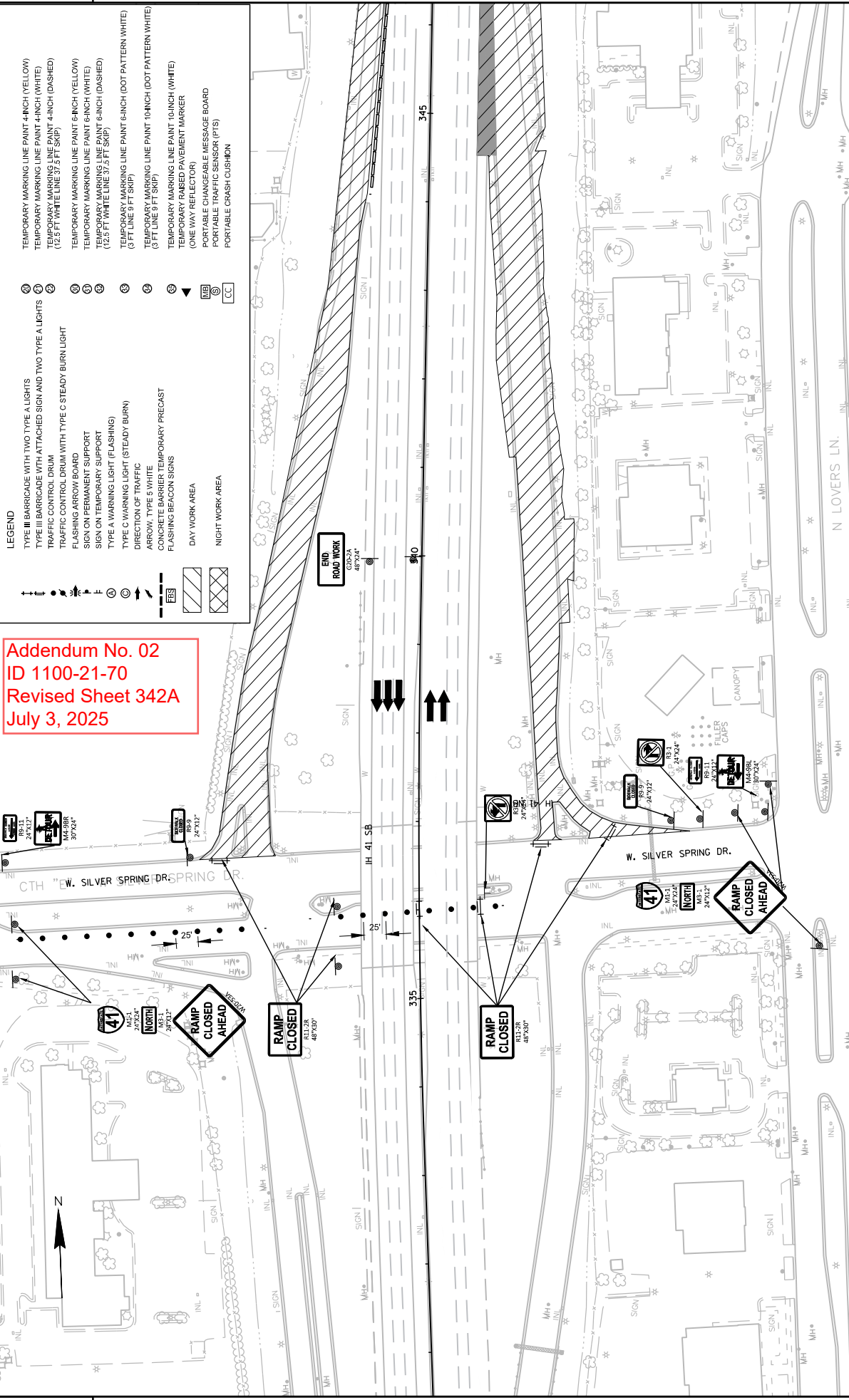




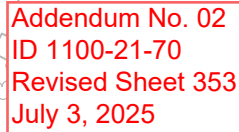


Addendum No. 02  
ID 1100-21-70  
Revised Sheet 342A  
July 3, 2025

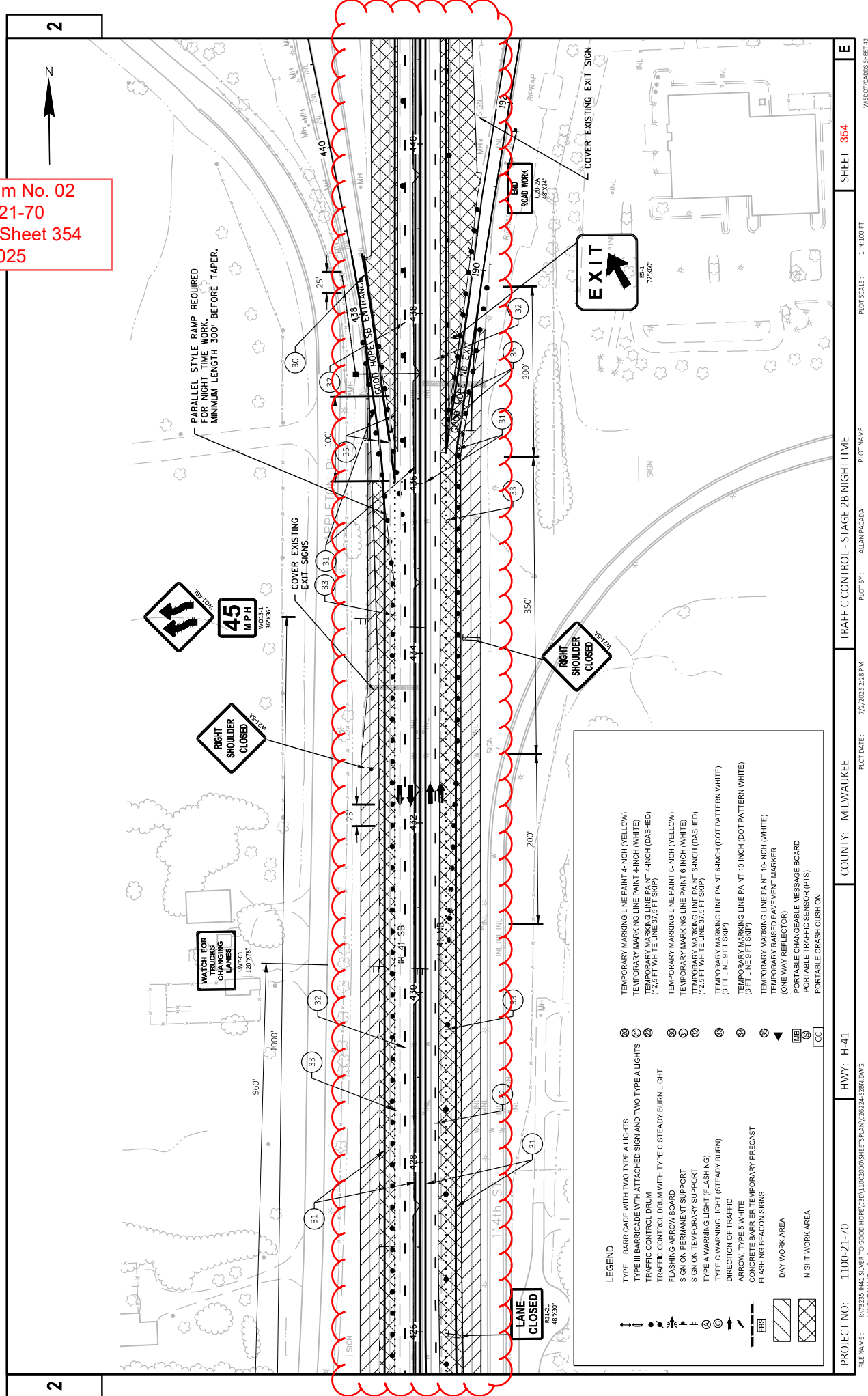
LEGEND	
	TYPE III BARRICADE WITH TWO TYPE A LIGHTS
	TYPE III BARRICADE WITH ATTACHED SIGN AND TWO TYPE A LIGHTS
	TRAFFIC CONTROL DRUM
	FLASHING ARROW BOARD
	SIGN ON PERMANENT SUPPORT
	SIGN ON TEMPORARY SUPPORT
	TYPE C WARNING LIGHT (FLASHING)
	TYPE C WARNING LIGHT (STEADY BURN)
	ARROW, TYPE E WHITE
	CONCRETE BARRIER TEMPORARY PRECAST
	FLASHING BEACON SIGNS
	DAY WORK AREA
	NIGHT WORK AREA
	TEMPORARY MARKING LINE PAINT 4-INCH (YELLOW)
	TEMPORARY MARKING LINE PAINT 4-INCH (WHITE)
	TEMPORARY MARKING LINE PAINT 4-INCH (DASHED)
	TEMPORARY MARKING LINE PAINT 6-INCH (YELLOW)
	TEMPORARY MARKING LINE PAINT 6-INCH (WHITE)
	TEMPORARY MARKING LINE PAINT 6-INCH (DASHED)
	TEMPORARY MARKING LINE PAINT 8-INCH (DOT PATTERN WHITE)
	TEMPORARY MARKING LINE PAINT 10-INCH (DOT PATTERN WHITE)
	TEMPORARY MARKING LINE PAINT 10-INCH (WHITE)
	(ONE WAY REFLECTOR)
	PORTABLE CHANGEABLE MESSAGE BOARD
	PORTABLE TRAFFIC SENSOR (PTS)
	PORTABLE CRASH CUSHION



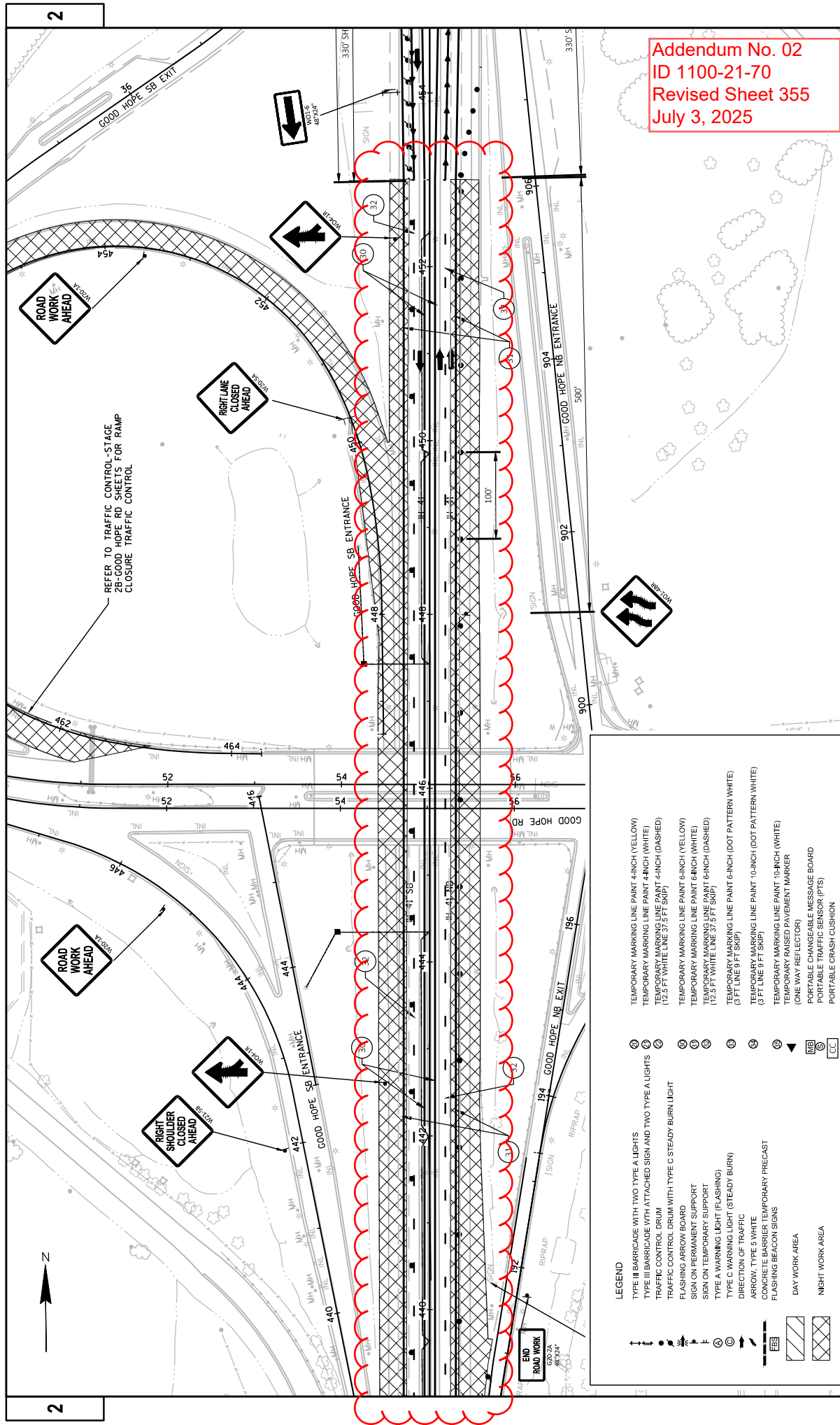
PROJECT NO: 1100-21-70	HWY: IH 41	COUNTY: MILWAUKEE	TRAFFIC CONTROL - STAGE 2B RAMP CLOSURES	SHEET 342A	E
FILE NAME: I:\7325 IH41 SILVER TO GOOD HOPE\CD\11002000\SHEETSP\AN02640-52B-RAMP CLOSURE.DWG	LAYOUT NAME: 02584	DATE: 7/2/2025 11:26 AM	BY: ALAN PACADA	SCALE: 1 IN=100 FT	WSDOT/CADDS-SHEET 42



Addendum No. 02  
ID 1100-21-70  
Revised Sheet 354  
July 3, 2025

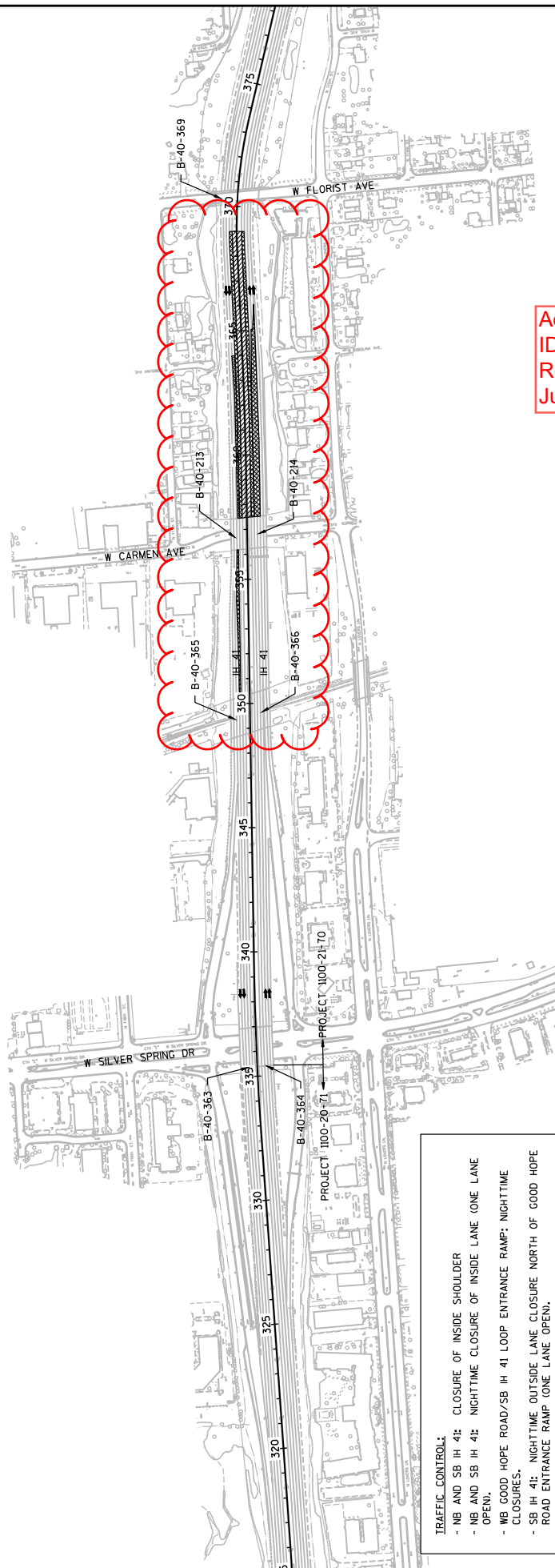






Addendum No. 02  
ID 1100-21-70  
Revised Sheet 355  
July 3, 2025

LEGEND	
	TYPE III BARRICADE WITH TWO TYPE A LIGHTS
	TYPE III BARRICADE WITH ATTACHED SIGN AND TWO TYPE A LIGHTS
	TRAFFIC CONTROL DRUM
	FLASHING ARROW BOARD
	SIGN ON TEMPORARY SUPPORT
	TYPE A WARNING LIGHT (FLASHING)
	TYPE C WARNING LIGHT (STEADY BURN)
	ARROW, TYPE S WHITE
	CONCRETE BARRIER TEMPORARY PRECAST
	FLASHING BEACON SIGNS
	DAY WORK AREA
	NIGHT WORK AREA
	END ROAD WORK
	TEMPORARY MARKING LINE PAINT 4-INCH (YELLOW)
	TEMPORARY MARKING LINE PAINT 4-INCH (WHITE)
	TEMPORARY MARKING LINE PAINT 4-INCH (DASHED)
	TEMPORARY MARKING LINE PAINT 6-INCH (YELLOW)
	TEMPORARY MARKING LINE PAINT 6-INCH (WHITE)
	TEMPORARY MARKING LINE PAINT 6-INCH (DASHED)
	TEMPORARY MARKING LINE PAINT 6-INCH (DOT PATTERN WHITE)
	TEMPORARY MARKING LINE PAINT 10-INCH (DOT PATTERN WHITE)
	TEMPORARY MARKING LINE PAINT 10-INCH (WHITE)
	TEMPORARY RAISED PAVEMENT MARKER
	(ONE WAY REFLECTOR)
	PORTABLE CHANGEABLE MESSAGE BOARD
	PORTABLE TRAFFIC SENSOR (PTS)
	PORTABLE CRASH CUSHION



Addendum No. 02  
ID 1100-21-70  
Revised Sheet 362  
July 3, 2025

PLAN VIEW LEGEND

DAY AND NIGHT WORKZONE

 NIGHT WORKZONE ONLY

TRAFFIC CONTROL:

- NB AND SB IH 4I: CLOSURE OF INSIDE SHOULDER
- NB AND SB IH 4I: NIGHTTIME CLOSURE OF INSIDE LANE (ONE LANE OPEN).
- WB GOOD HOPE ROAD/SB IH 4I LOOP ENTRANCE RAMP: NIGHTTIME CLOSURES.
- SB IH 4I: NIGHTTIME OUTSIDE LANE CLOSURE NORTH OF GOOD HOPE ROAD ENTRANCE RAMP (ONE LANE OPEN).
- NIGHTTIME CLOSURES OF EXIT AND ENTRANCE RAMPS AT GOOD HOPE ROAD TO SB IH 4I.
- CONSTRUCTION ON APPLETON AVENUE RAMPS WILL BE RESTRICTED TO NIGHTTIME HOURS ONLY.
- ALL CROSSROADS OPEN.
- OPERATIONS:
  - PERFORM BASE PATCHING OF INSIDE SHOULDER
  - PERFORM BASE PATCHING OF INSIDE SHOULDER OVER NIGHT
  - REMOVE TEMPORARY CROSSOVER.
  - C-CONSTRUCT PERMANENT BARRIER IN MEDIAN.
  - C-CONSTRUCT LIGHTING REPLACEMENTS IN MEDIAN.
  - PERFORM STORM SEWER/INLET REPAIR/REPLACEMENTS IN MEDIAN.

PROJECT NO: 1100-21-70

HWY: IH 41

FILE NAME : I:\73235 IH41 SILVER TO GOOD HOPE\C3D\11002000\SHEETSPLAN\026301-S3.DWG  
LAYOUT NAME - 026301-S3 - 025001

COUNTY: MILWAUKEE

PLOT DATE : 7/2/2025 2:32 PM

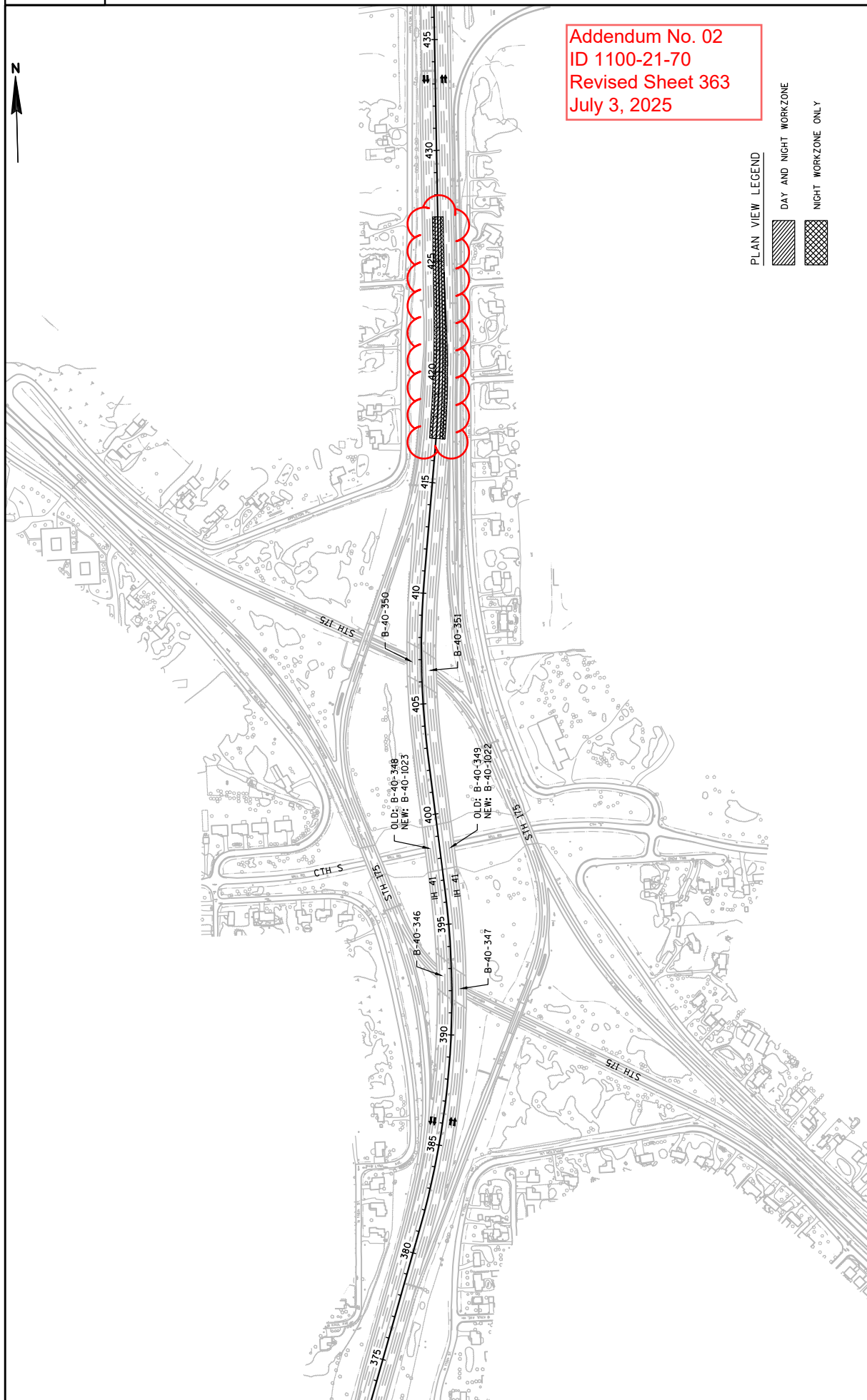
## CONSTRUCTION OVERVIEW STAGE 3

PLOT NAME :

PLOT SCALE : 1 IN:400 FT

SHEET 362


WISDOT/CADDs SHEET 44



Addendum No. 02  
ID 1100-21-70  
Revised Sheet 363  
July 3, 2025

PLAN VIEW LEGEND

DAY AND NIGHT WORKZONE



NIGHT WORKZONE ONLY

PROJECT NO: 1100-21-70

HWY: IH 41

COUNTY: MILWAUKEE

CONSTRUCTION OVERVIEW STAGE 3

SHEET 363	E
-----------	---

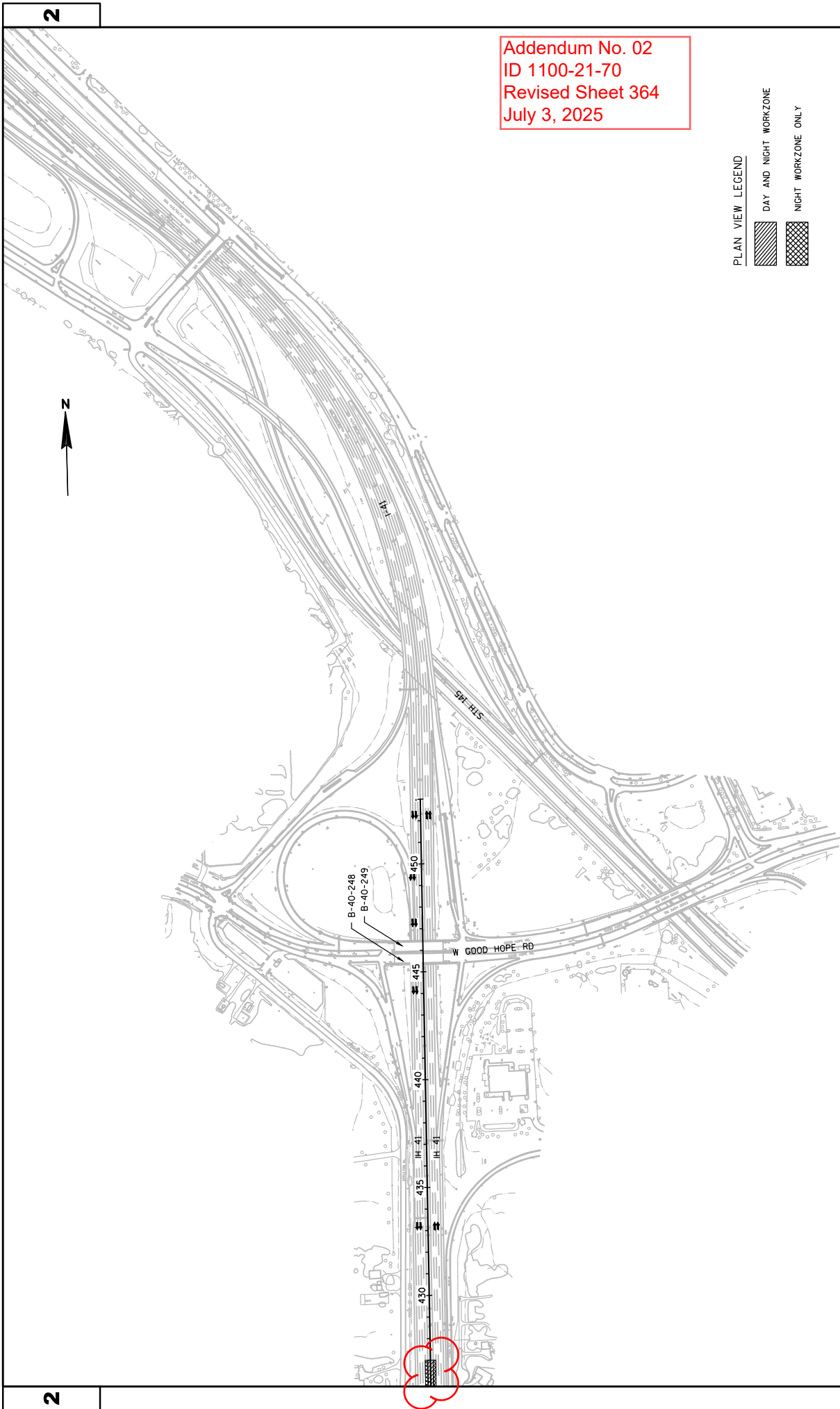
FILE NAME : I:\73235 IH41 SILVER TO GOOD HOPE\C3D\11002000\SHEETPLAN\026301-S3.DWG  
LAYOUT NAME - 026301-S3 - 025002

PLOT DATE : 7/2/2025 2:32 PM

PLOT BY : ALLAN PACADA PLOT NAME :

PLOT SCALE : 1 IN:400 FT

WISDOT/CADDs SHEET 44



Addendum No. 02  
ID 1100-21-70  
Revised Sheet 364  
July 3, 2025

PROJECT NO: 1100-21-70	HWY: IH 41	COUNTY: MILWAUKEE	CONSTRUCTION OVERVIEW STAGE 3	SHEET 364	E
FILE NAME : I:\73235 IH41 SILVER TO GOOD HOPE\CD\11002000\SHETS\PLAN\026301-S3.DWG					
LAYOUT NAME - 026301-S3 - 026303					
PLOT DATE : 7/2/2025 2:32 PM					
PLOT BY : ALLAN PACADA					
PLOT NAME :					
PLOT SCALE : 1 IN:400 FT					
WISDOT/CADDs SHEET 44					



2

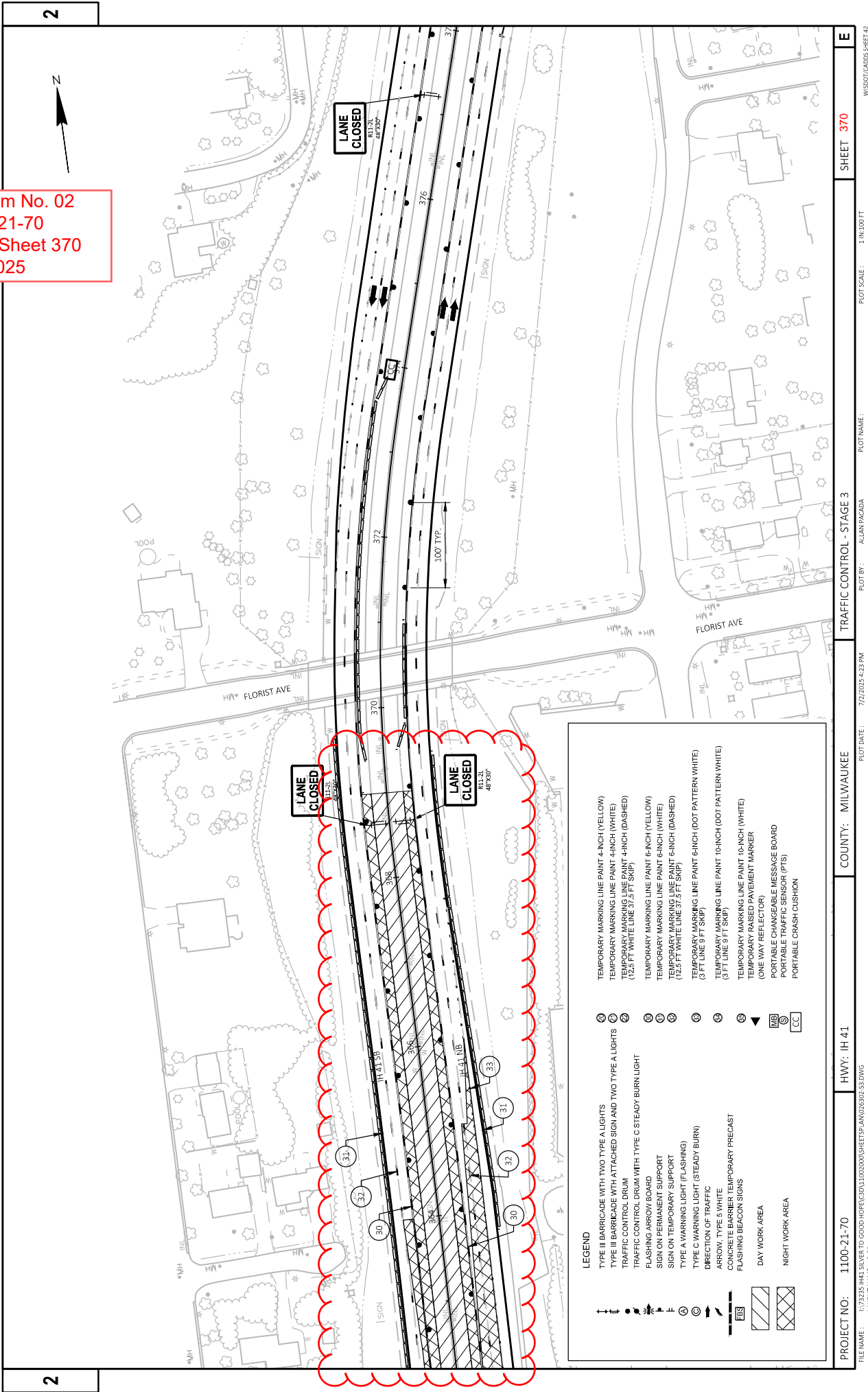
No. 02  
70  
et 369

2

LEGEND	21	TEMPORARY TYPE II BARRICADE WITH TWO TYPE A LIGHTS	TEMPORARY MARKING LINE PAINT 4-INCH (YELLOW)
	22	TYPE I BARRICADE WITH ATTACHED SIGN AND TWO TYPE A LIGHTS	TEMPORARY MARKING LINE PAINT 4-INCH (WHITE)
	23	TRAFFIC CONTROL DRUM	TEMPORARY MARKING LINE PAINT 4-INCH (DASHED) (12.5 FT WHITE LINE 37.5 FT SKIP)
	24	TRAFFIC CONTROL DRUM WITH TYPE C STEADY BURN LIGHT	TEMPORARY MARKING LINE PAINT 6-INCH (YELLOW)
	25	LASHING ARROW BOARD	TEMPORARY MARKING LINE PAINT 6-INCH (WHITE)
	26	SIGN ON PERMANENT SUPPORT	TEMPORARY MARKING LINE PAINT 6-INCH (DASHED) (12.5 FT WHITE LINE 37.5 FT SKIP)
	27	SIGN ON TEMPORARY SUPPORT	TEMPORARY MARKING LINE PAINT 6-INCH (DOT PATTERN) (3 FT LINE 9 FT SKIP)
	28	TYPE A WARNING LIGHT (FLASHING)	TEMPORARY MARKING LINE PAINT 10-INCH (DOT PATTERN) (3 FT LINE 9 FT SKIP)
	29	TYPE C WARNING LIGHT (STEADY BURN)	TEMPORARY MARKING LINE PAINT 10-INCH (WHITE) (ONE WAY REFLECTOR)
	30	DIRECTION OF TRAFFIC	PORTABLE CHANGEABLE MESSAGE BOARD
	31	ARROW, TYPE 5 WHITE	PORTABLE TRAFFIC SENSOR (PTS)
	32	CONCRETE BARRIER	PORTABLE CRASH CUSHION
	33	LASHING BEACON SIGNS	
	34	DAY WORK AREA	
	35	NIGHT WORK AREA	

PROJECT NO:	1100-21-70	HWY:	IH 41	COUNTY:	MILWAUKEE	TRAFFIC CONTROL - STAGE 3	SHEET	369	E
FILE NAME: \\V3235\I44\SILVER TO GOOD-HOPE\CD\11002000\SHEETS\PLAN\026030.S3.DWG						PLLOT DATE:	7/21/2025 4:23 PM	PLLOT BY:	ALANI PAGADA
						PLLOT SCALE:	1 IN 100 FT		
						WSDOT/CADD.SHEET 42			

Addendum No. 02  
ID 1100-21-70  
Revised Sheet 370  
July 3, 2025

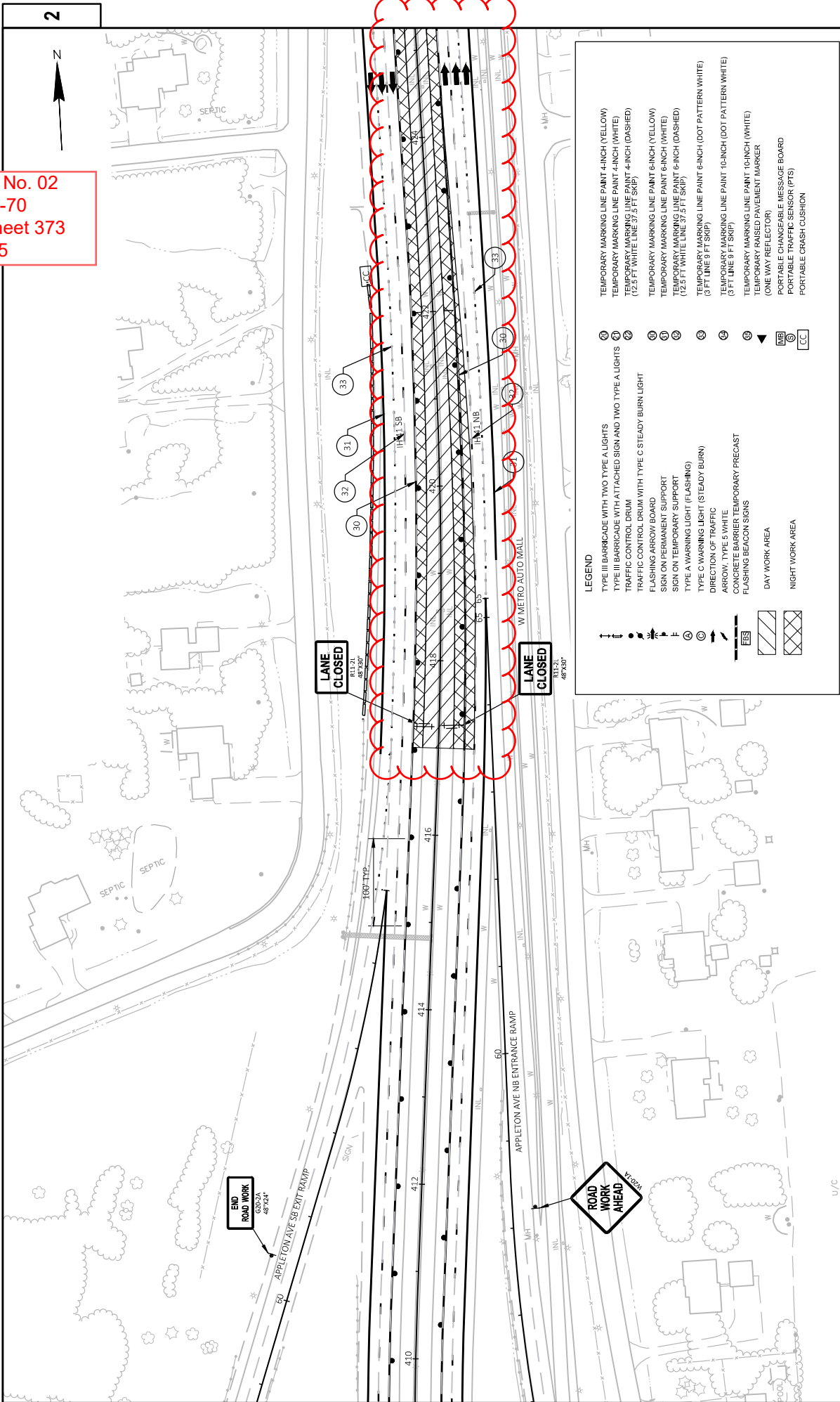


**LEGEND**

TYPE II BARRICADE WITH TWO TYPE A LIGHTS	TEMPORARY MARKING LINE PAINT 4-INCH (YELLOW)
TYPE II BARRICADE WITH ATTACHED SIGN AND TWO TYPE A LIGHTS	TEMPORARY MARKING LINE PAINT 4-INCH (WHITE)
TRAFFIC CONTROL DRUM	TEMPORARY MARKING LINE PAINT 4-INCH (DASHED)
FLASHING ARROW BOARD	TEMPORARY MARKING LINE PAINT 6-INCH (YELLOW)
SIGN ON PERMANENT SUPPORT	TEMPORARY MARKING LINE PAINT 6-INCH (WHITE)
SIGN ON TEMPORARY SUPPORT	TEMPORARY MARKING LINE PAINT 6-INCH (DASHED)
TYPE A WARNING LIGHT (FLASHING)	TEMPORARY MARKING LINE PAINT 6-INCH (DOT PATTERN WHITE)
DIRECTION OF TRAFFIC	TEMPORARY MARKING LINE PAINT 10-INCH (DOT PATTERN WHITE)
ARROW, TYPE 5 WHITE	TEMPORARY MARKING LINE PAINT 10-INCH (WHITE)
CONCRETE BARRIER TEMPORARY PRECAST	TEMPORARY RAISED PAVEMENT MARKER
FLASHING BEACON SIGNS	(ONE WAY REFLECTOR)
	PORTABLE CHANGEABLE MESSAGE BOARD
	PORTABLE TRAFFIC SENSOR (PTS)
	PORTABLE CRASH CUSHION

DAY WORK AREA  
NIGHT WORK AREA

Addendum No. 02  
ID 1100-21-70  
Revised Sheet 373  
July 3, 2025



**LEGEND**

TYPE III BARRICADE WITH TWO TYPE A LIGHTS	②
TYPE III BARRICADE WITH ATTACHED SIGN AND TWO TYPE A LIGHTS	②
TRAFFIC CONTROL DRUM	②
FLASHING ARROW BOARD	④
SIGN ON TEMPORARY SUPPORT	④
TYPE A WARNING LIGHT (FLASHING)	④
TYPE C WARNING LIGHT (STEADY BURN)	④
DIRECTION OF TRAFFIC	④
ARROW, TYPE 5 WHITE	④
CONCRETE BARRIER TEMPORARY PRECAST	④
FLASHING BEACON SIGNS	④
DAY WORK AREA	④
NIGHT WORK AREA	④

TEMPORARY MARKING LINE PAINT 4-INCH (YELLOW)	②
TEMPORARY MARKING LINE PAINT 4-INCH (WHITE)	②
TEMPORARY MARKING LINE PAINT 4-INCH (DASHED) (12.5 FT WHITE LINE 37.5 FT SKIP)	②
TEMPORARY MARKING LINE PAINT 6-INCH (YELLOW)	④
TEMPORARY MARKING LINE PAINT 6-INCH (WHITE)	④
TEMPORARY MARKING LINE PAINT 6-INCH (DASHED) (12.5 FT WHITE LINE 37.5 FT SKIP)	④
TEMPORARY MARKING LINE PAINT 6-INCH (DOT PATTERN WHITE) (3 FT LINE 5 FT SKIP)	④
TEMPORARY MARKING LINE PAINT 10-INCH (DOT PATTERN WHITE) (3 FT LINE 5 FT SKIP)	④
TEMPORARY MARKING LINE PAINT 10-INCH (DOT PATTERN WHITE) (ONE WAY REFLECTOR)	④
PORTABLE CHANGEABLE MESSAGE BOARD	④
PORTABLE TRAFFIC SENSOR (PTS)	④
PORTABLE CRASH CUSHION	④

Addendum No. 02  
ID 1100-21-70  
Revised Sheet 374  
July 3, 2025

