



Wisconsin Department of Transportation

February 18, 2025

**Division of Transportation Systems
Development**

Bureau of Project Development
4822 Madison Yards Way, 4th Floor South
Madison, WI 53705

Telephone: (608) 266-1631
Facsimile (FAX): (608) 266-8459

NOTICE TO ALL CONTRACTORS:

Proposal #39: 1020-00-85
Hudson – Baldwin
STH 35 S Interchange N-55-02, 03, 04
IH 94
St. Croix County

Letting of March 11, 2025

This is Addendum No. 01, which provides for the following:

Plan Sheets:

Added Plan Sheets	
Plan Sheet	Plan Sheet Title (brief description of why sheet was deleted)
47A – 47F	N-55-02

Deleted Plan Sheets	
Plan Sheet	Plan Sheet Title (brief description of why sheet was added)
47 – 49	N-55-02 (Wrong plan set)

The responsibility for notifying potential subcontractors and suppliers of these changes remains with the prime contractor.

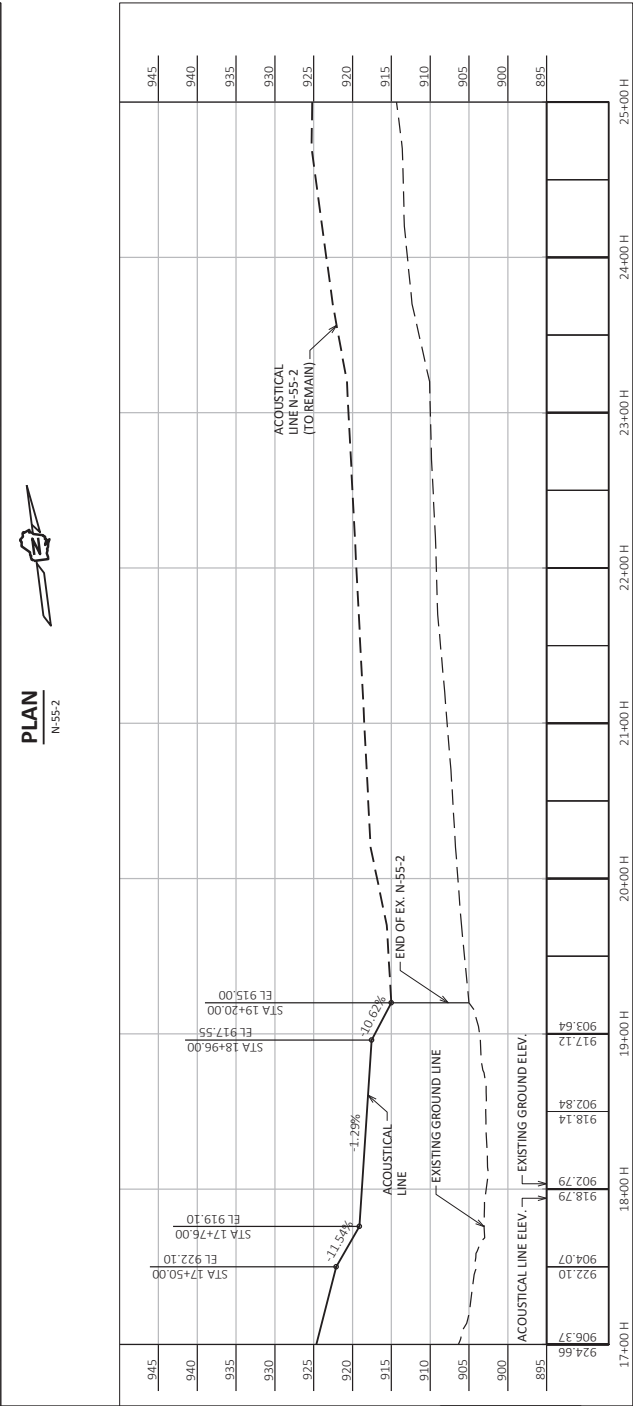
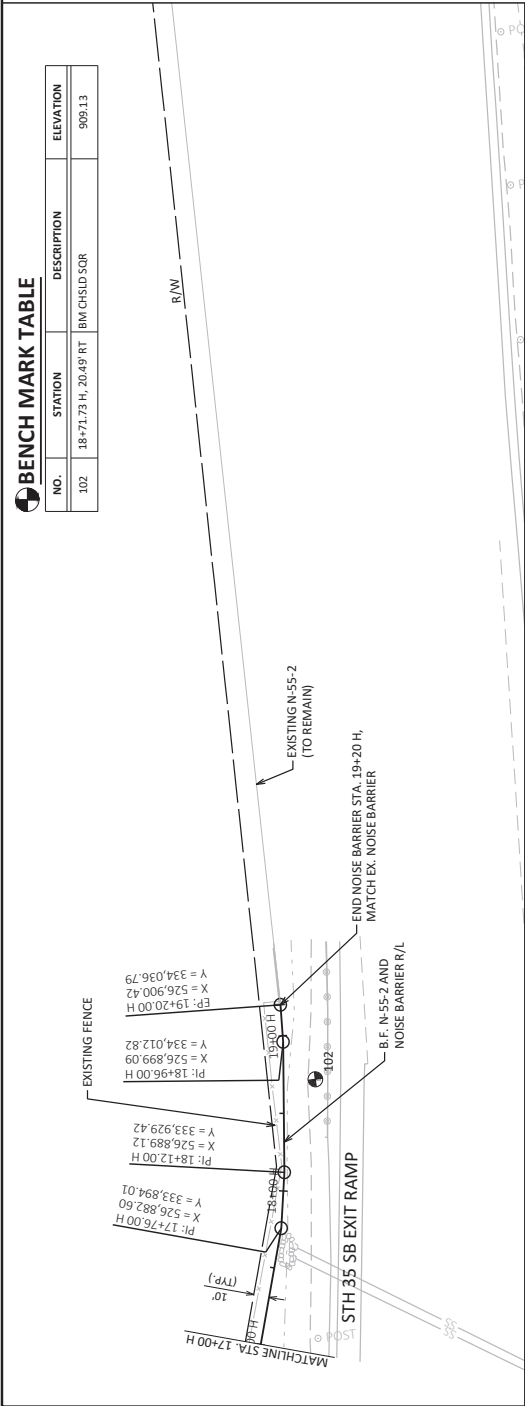
Sincerely,

Mike Coleman

Proposal Development Specialist
Proposal Management Section

END OF ADDENDUM

ELEVATION
LOOKING AT F.F. OF NOISE BARRIER



ELEVATION

LOOKING AT F.F. OF NOISE BARRIER

STATION	ELEVATION
17+00 H	924.66
17+00 H	906.37
17+00 H	922.10
18+00 H	904.07
18+00 H	918.79
18+00 H	902.79
18+00 H	918.14
18+00 H	902.84
19+00 H	917.12
19+00 H	903.64
20+00 H	
21+00 H	
22+00 H	
23+00 H	
24+00 H	
25+00 H	

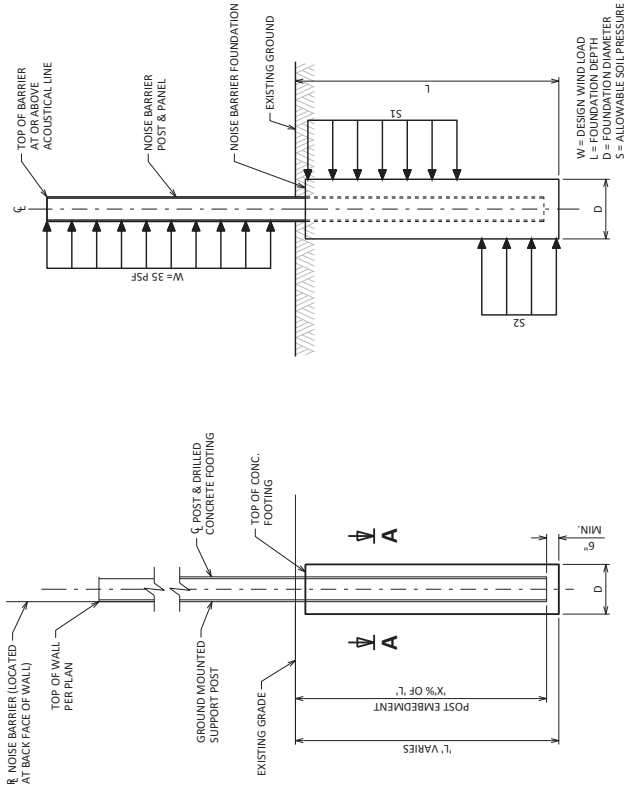
ELEVATION TABLE

NOISE BARRIER WALL STA.	EXISTING GROUND ELEV.	ACROUSTICAL LINE ELEV.
10+00.00 H	920.71	930.75
10+50.00 H	921.50	931.50
11+00.00 H	920.62	930.58
11+50.00 H	919.98	929.67
12+00.00 H	918.75	928.75
12+50.00 H	915.03	929.55
13+00.00 H	914.31	930.35
13+50.00 H	917.89	933.90
14+00.00 H	919.62	933.51
14+50.00 H	919.52	933.12
15+00.00 H	919.01	932.74
15+50.00 H	918.32	932.35
16+00.00 H	913.74	929.79
16+50.00 H	908.73	927.22
17+00.00 H	906.37	924.66
17+50.00 H	904.07	922.10
17+76.00 H	903.06	919.10
18+00.00 H	902.79	918.79
18+50.00 H	902.84	918.14
18+96.00 H	903.53	917.55
19+00.00 H	903.64	917.12
19+20.00 H	905.00	915.00

LEGEND
R/L = REFERENCE LINE
R/W = RIGHT OF WAY

Addendum No. 01
ID 1020-00-85
Added Sheet 47B
February 18, 2025

Addendum No. 01
ID 1020-00-85
Added Sheet 47C
February 18, 2025



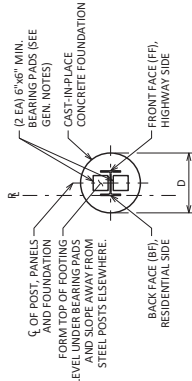
NOISE BARRIER
LOADING DIAGRAM

(NOT TO SCALE)

SECTION THRU GROUND MOUNTED
POST & DRILLED CONC. FOOTING

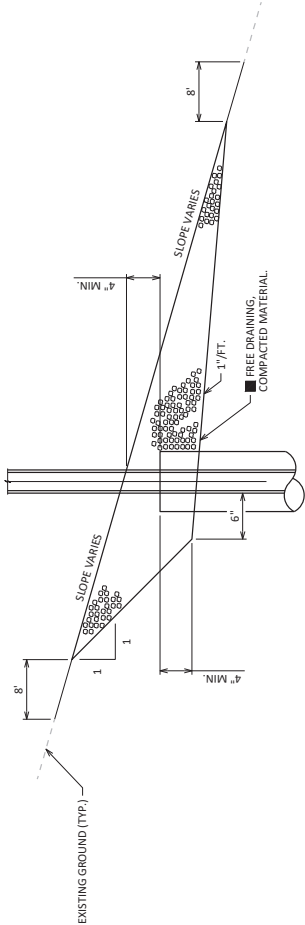
TYPICAL AT EACH POST LOCATION

(D', L' AND X' TO BE DETERMINED BY SUPPLIER)



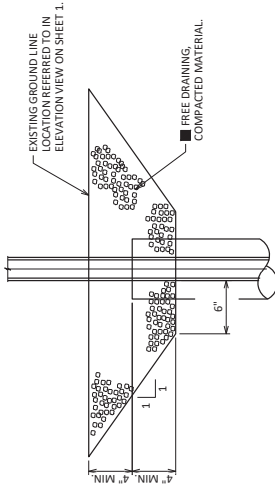
SECTION A-A

(AT TOP OF FOUNDATION, BARRIER
PANELS OMITTED FOR DRAWING CLARITY)



* SLOPED GRADE BACKFILL &
DRAINAGE DETAIL

(NOT TO SCALE)



* LEVEL GRADE BACKFILL &
DRAINAGE DETAIL

(NOT TO SCALE)

GENERAL NOTES

INSTALL FREE DRAINING GRANULAR MATERIAL AT THE BOTTOM OF
BARRIER BACKFILL. GRANULAR MATERIAL SHALL BE INCLUDED
WITH THE BID ITEM "NOISE BARRIERS DOUBLE-SIDED SOUND
ABSORPTIVE STRUCTURE N-55-02."

LEGEND

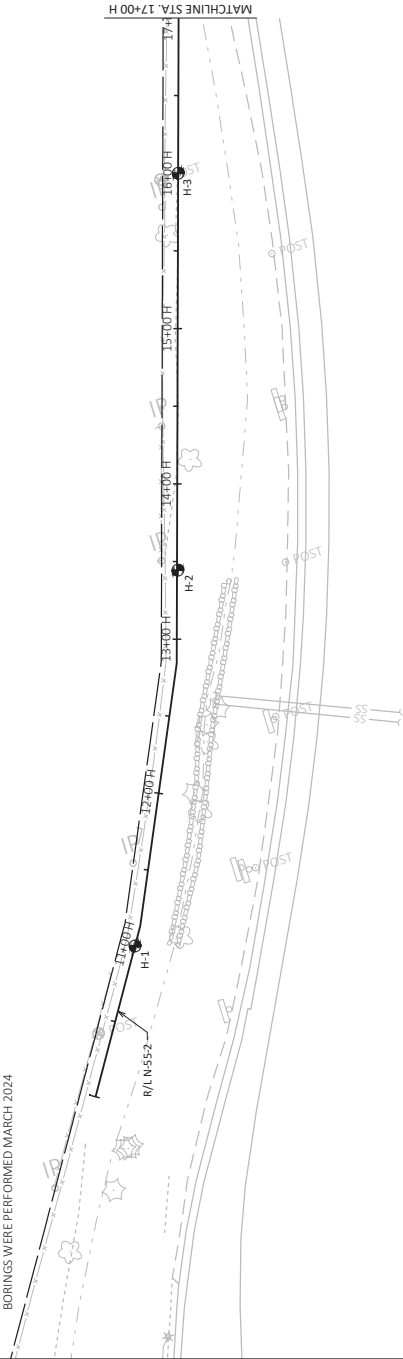
* ALL ITEMS SHOWN ARE INCLUDED WITH THE BID ITEM "NOISE
BARRIERS DOUBLE-SIDED SOUND ABSORPTIVE STRUCTURE N-55-02".

■ AT A MINIMUM, MATERIAL AND COMPACTION SHALL MEET THE
REQUIREMENTS OF SECTION 312 OF THE STANDARD SPECIFICATIONS.

NO.	DATE	REVISION	BY
STATE OF WISCONSIN DEPARTMENT OF TRANSPORTATION			
STRUCTURE N-55-2			
DESIGNED BY		WZHC	WZHC
CHECKED BY		BMO	BMO
SHEET 3 OF 6		BARRIER DETAILS	
		47C	

BORINGS AND REPORT BY:
GESTRA ENGINEERING, INC.
1515 WEST KENOSHA AVENUE
MILWAUKEE WI 53207

BORINGS WERE PERFORMED MARCH 2024



NOTE

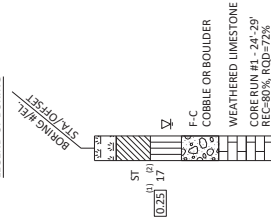
THE SUBSURFACE INFORMATION PRESENTED HEREIN IS AN ABBREVIATED VERSION OF THE INFORMATION PRESENTED IN THE GEOTECHNICAL ENGINEERING REPORT AND SOIL BORING LOGS FOR ADDITIONAL SUBSURFACE INFORMATION.

PLAN
N-55-2

Addendum No. 01
ID 1020-00-85
Added Sheet 47D
February 18, 2025

MATERIAL SYMBOLS	
ASPHALT	TOPSOIL
CONCRETE	FILL
SAND	CLAY
BOULDERS OR COBBLES	LIMESTONE
SHALE	SANDSTONE
	IGNEOUS/METAL
PEAT	GRAVEL
	SILT
	BEDROCK (UNKNOWN)

LEGEND OF BORING



UNCOMPRESSED STRENGTH, AS DETERMINED BY A POCKET PENETROMETER (135)

UNLESS OTHERWISE SPECIFIED, THE SPT 'N' VALUE IS BASED ON A STANDARD CORRECTION FOR OVERBURDEN PRESSURE. THE SPT 'N' VALUE PRESENTED HAS NOT BEEN CORRECTED FOR OVERBURDEN PRESSURE OR HAMMER EFFICIENCY.

GROUND WATER ELEVATION

AT TIME OF DRILLING
END OF DRILLING
AFTER DRILLING

ABBREVIATIONS

F-FINE M-MEDIUM C-COARSE ST-SHELBY TUBE

SUBSURFACE EXPLORATION FOR FOUNDATION DESIGN AND BIDDERS INFORMATION

BORINGS WERE COMPLETED AT POINTS APPROXIMATELY AS SHOWN ON THE ATTACHED MAP. THE DEPTHS OF BORINGS FOUND AT THE SITE, BECAUSE THE INVESTIGATED DEPTHS ARE LIMITED AND THE AREA OF THE BORINGS IS VERY SMALL, THE DEPTHS OF BORINGS ARE NOT NEARLY AS LARGE AS THE DEPARTMENT OF TRANSPORTATION DOES NOT WARRANT SIMILAR SUBSURFACE CONDITIONS BELOW, BETWEEN, OR BEYOND THESE BORINGS. VARIATIONS IN SOIL CONDITIONS AND GROUND WATER LEVELS MAY OCCUR.

NO. DATE REVISION BY

STATE OF WISCONSIN
DEPARTMENT OF TRANSPORTATION

STRUCTURE N-55-2

DESIGNED BY ZHC

BY BMO

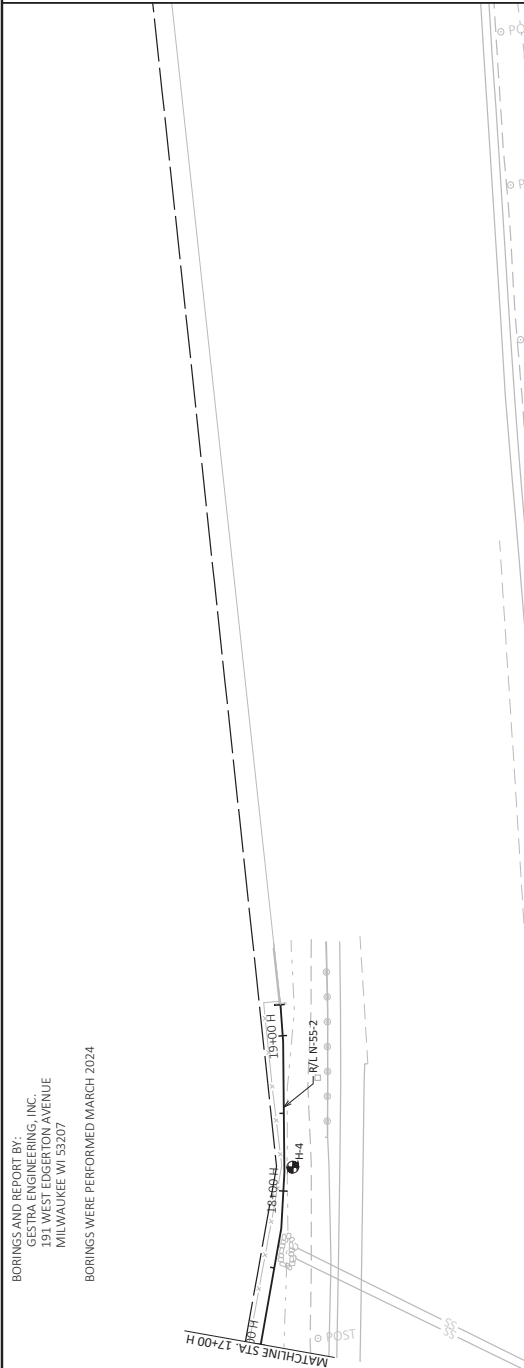
SHEET 4 OF 6

SUBSURFACE
EXPLORATION - 1

47D

BORINGS AND REPORT BY:
GESTRA ENGINEERING, INC.
211 WEST CENTER AVENUE
MILWAUKEE, WI 53207

BORINGS WERE PERFORMED MARCH 2024



NOTE

THE SUBSURFACE INFORMATION PRESENTED HEREIN IS AN ABBREVIATED VERSION OF THE INFORMATION PRESENTED IN THE GEOTECHNICAL ENGINEERING REPORT AND SOIL BORING LOGS FOR ADDITIONAL SUBSURFACE INFORMATION.

PLAN
N-55-2

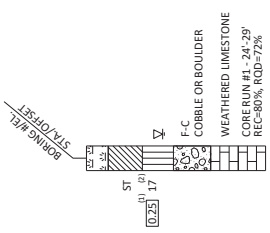


Addendum No. 01
ID 1020-00-85
Added Sheet 47E
February 18, 2025

MATERIAL SYMBOLS

ASPHALT	TOPSOIL	PEAT
CONCRETE	FILL	GRAVEL
SAND	CLAY	SILT
BOULDERS OR COBBLES	LIMESTONE	BEDROCK (UNKNOWN)
SHALE	SANDSTONE	IGNEOUS/METAL

LEGEND OF BORING



UNCOMPACTIONED STRENGTH, AS DETERMINED BY A POCKET PENETROMETER (15%)

UNLESS OTHERWISE SPECIFIED, THE SPT 'N' VALUE IS BASED ON A STANDARD ENERGY OF 60 FT-LBS PER BLOW. TEST THE SPT 'N' VALUE PRESENTED HAS NOT BEEN CORRECTED FOR OVERBURDEN PRESSURE OR HAMMER EFFICIENCY.

GROUND WATER ELEVATION

▽ AT TIME OF DRILLING

▽ END OF DRILLING

▽ AFTER DRILLING

ABBREVIATIONS

F-FINE M-MEDIUM C-COARSE ST-SHELBY TUBE

SUBSURFACE EXPLORATION FOR FOUNDATION DESIGN AND BIDDERS INFORMATION

BORINGS WERE COMPLETED AT POINTS APPROXIMATELY AS SHOWN ON THE ATTACHED PLAN. THE CHARACTER OF SUBSURFACE MATERIALS FOUND AT THE SITE, BECAUSE THE INVESTIGATED DEPTHS ARE LIMITED AND THE AREA OF THE BORINGS IS VERY SMALL, IS NOT NEARLY REPRESENTATIVE OF THE ENTIRE PROJECT AREA. DEPARTMENT OF TRANSPORTATION DOES NOT WARRANT SIMILAR SUBSURFACE CONDITIONS BELOW, BETWEEN, OR BEYOND THESE BORINGS. VARIATIONS IN SOIL CONDITIONS FROM THE INFORMATION PROVIDED HEREON IN CONNECTIONS IN GROUNDWATER LEVELS MAY OCCUR.

NO.	DATE	REVISION	BY
-----	------	----------	----

STATE OF WISCONSIN
DEPARTMENT OF TRANSPORTATION

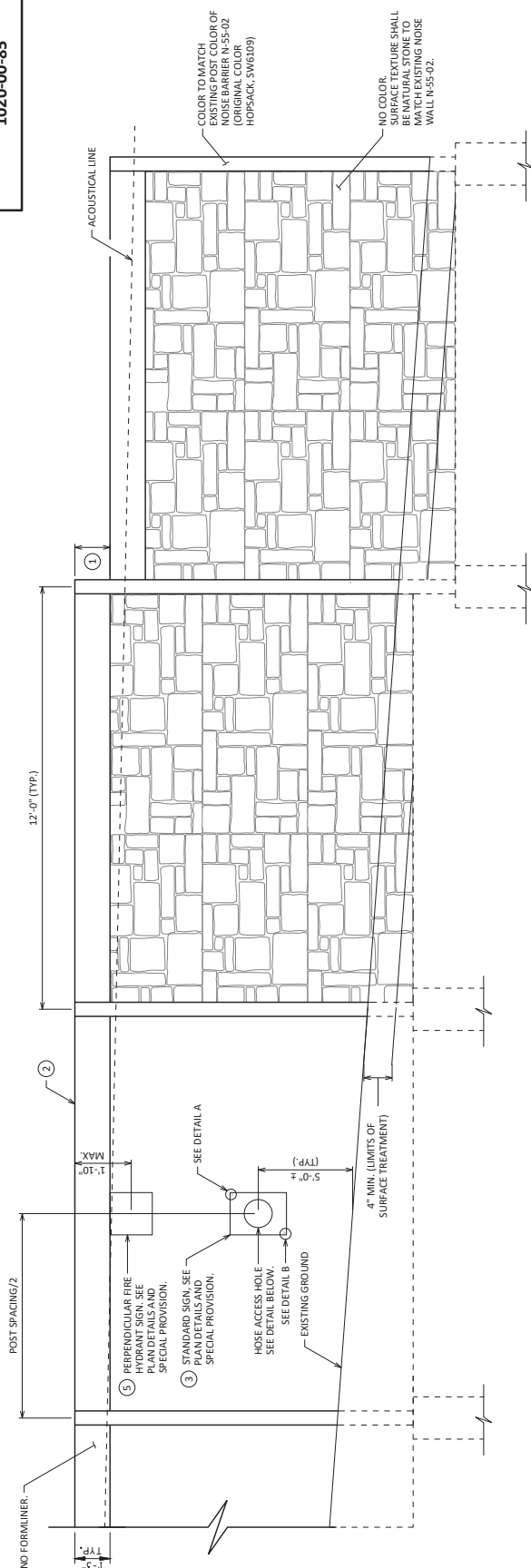
STRUCTURE N-55-2

DESIGNED BY	CHC	EXCD	BMO
-------------	-----	------	-----

SUBSURFACE EXPLORATION - 2

SHEET 5 OF 6

47E



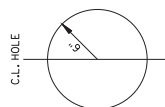
TYPICAL NOISE BARRIER ELEVATION

FORMLINER TO BE PLACED ON BOTH SIDES OF NOISE WALL)

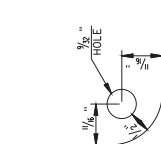
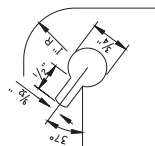
ACCESS HOLE LOCATIONS

* WALL STA.
11+50 H
16+10 H

*- ADJUST WALL STATION AS REQUIRED TO PLACE ACCESS HOLES MIDWAY BETWEEN POSTS.

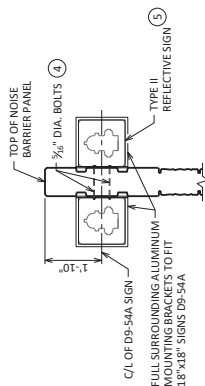


HOSE ACCESS HOLE DETAIL



FIRE HYDRANT LOCATION SIGN MOUNTING

(SECTION THRU NOISE BARRIER PANEL)



LEGEND

- 1 STEP PANELS A MAXIMUM OF 3' IN HEIGHT. WHEN MORE THAN ONE PANEL MUST BE STEPPED, KEEP THE STEP INCREMENT THE SAME FOR EACH OF STEPPING PANELS.
- 2 ADJUST VERTICAL PLACEMENT OF PANELS TO MAXIMIZE HORIZONTAL RUNS, KEEPING THE TOP OF PANELS AT THE SAME ELEVATION. THE TOP OF WALL SHALL BE AT OR ABOVE ACoustICAL LINE.
- 3 TYPE II REFLECTIVE SIGN TO BE CENTERED ON HOSE ACCESS HOLE. TWO STANDARD SIGNS D9-54A WILL BE FURNISHED AND INSTALLED PER ACCESS HOLE. SIGNS SHALL BE ATTACHED TO THE HOSE ACCESS HOLE WITH A MOUNTING BRACKET TO BE INCLUDED WITH THE BID ITEM "NOISE BARRIERS DOUBLE-ENDED SOUND ABSORPTIVE N-55-02".
- 4 STAINLESS STEEL HARDWARE (INCLUDING THRU BOLTS, WASHERS, NUTS, ETC.) TYPE 316 STAINLESS OR APPROVED EQUIVALENT. HARDWARE SHALL BE ATTACHED TO THE BID ITEM "NOISE BARRIERS DOUBLE-ENDED SOUND ABSORPTIVE N-55-02".
- 5 STANDARD SIGNS D9-54A WILL BE FURNISHED AND INSTALLED PER HOSE ACCESS HOLE. SIGN SHALL BE ATTACHED TO THE NOISE BARRIER WITH A MOUNTING BRACKET TO BE INCLUDED WITH THE BID ITEM "NOISE BARRIERS DOUBLE-ENDED SOUND ABSORPTIVE N-55-02". SEE SPECIAL PROVISIONS.

Addendum No. 01
ID 1020-00-85
Added Sheet 47F
February 18, 2025

[illegible]

