



Wisconsin Department of Transportation

January 9, 2025

**Division of Transportation Systems
Development**

Bureau of Project Development
4822 Madison Yards Way, 4th Floor South
Madison, WI 53705

Telephone: (608) 266-1631
Facsimile (FAX): (608) 266-8459

NOTICE TO ALL CONTRACTORS:

**Proposal #09: 5160-07-70, WISC 2023310
Prairie du Chien - Ferryville
CTH N to CTH E/B-12-41,-42,-43,-45
STH 35
Crawford County**

Letting of January 14, 2025

This is Addendum No. 01, which provides for the following:

Plan Sheets:

Revised Plan Sheets	
Plan Sheet	Plan Sheet Title (brief description of changes to sheet)
16	Construction Details (Updates to the Inlets Covers, Type MS Modified detail)

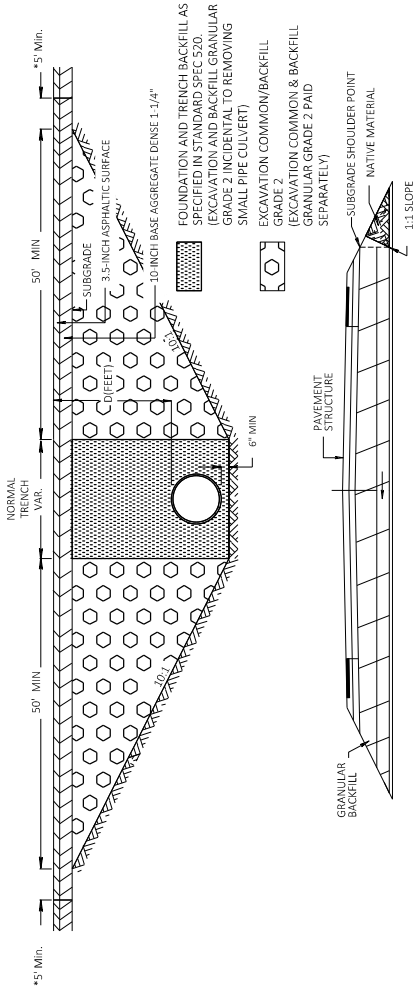
The responsibility for notifying potential subcontractors and suppliers of these changes remains with the prime contractor.

Sincerely,

Mike Coleman

Proposal Development Specialist
Proposal Management Section

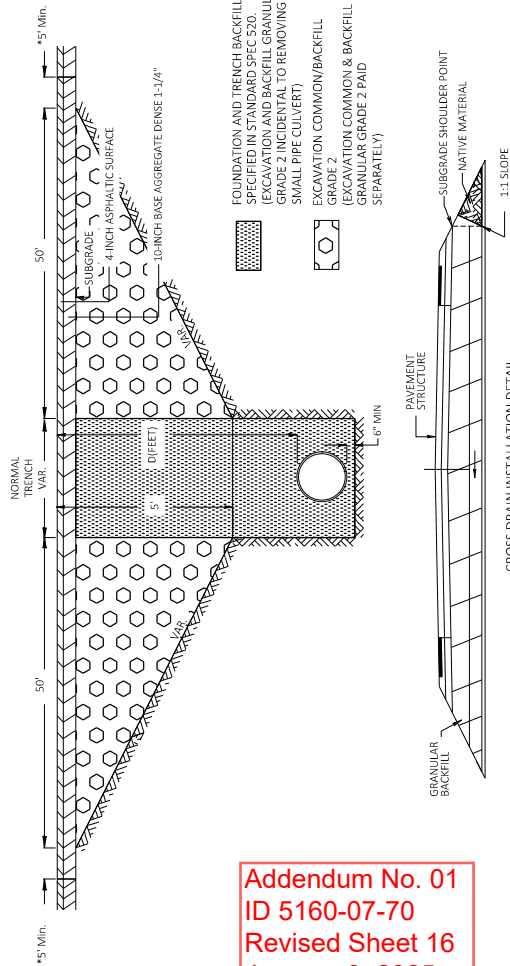
END OF ADDENDUM



CROSS DRAIN INSTALLATION DETAIL
FOR D < 5'

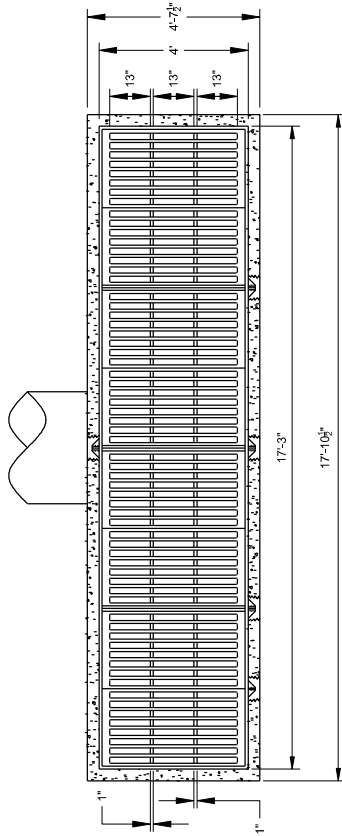
NOTES:
IN AREAS OF CONCRETE BARRIER, EXCAVATE TO
THE BARRIER FOOTING.

* PAVEMENT REMOVAL LIMITS (TYPICAL)

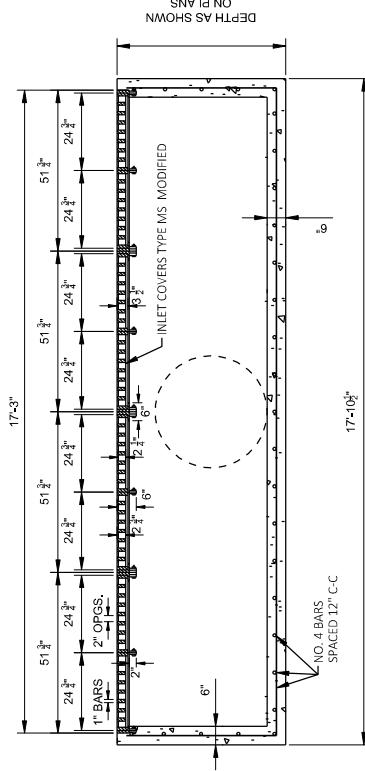


CROSS DRAIN INSTALLATION DETAIL
FOR D > 5'

Addendum No. 01
ID 5160-07-70
Revised Sheet 16
January 9, 2025



PLAN VIEW



PROFILE VIEW

INLET COVERS, TYPE MS MODIFIED

NOTE: INLET COVERS, TYPE MS MODIFIED SHALL BE PLACED ON INLETS BEHIND CONCRETE BARRIER WHERE DESIGNATED ON THE PLAN

PROJECT NO: 5160-07-70

HWY: STH 35

COUNTY: CRAWFORD

CONSTRUCTION DETAILS

SHEET 16

E

FILE NAME: G:\01\00093\0009339\CADD\SHETS\PLAN\021001-CD.DWG
LAYOUT NAME - 021003-08

PLANT DATE: 1/8/2025 6:47 AM

PLANT BY: BRAD LEE

PLANT SCALE: 1 IN=10 FT

W65007CADD05 SHEET 42