



Wisconsin Department of Transportation

January 10, 2025

Division of Transportation Systems Development

Bureau of Project Development
4822 Madison Yards Way, 4th Floor South
Madison, WI 53705

Telephone: (608) 266-1631
Facsimile (FAX): (608) 266-8459

NOTICE TO ALL CONTRACTORS:

<p>Proposal #01: 1204-08-73, WISC 2025145 Mount Horeb – Madison CTH G to West Verona Ave/Epic Ln USH 18 Dane county</p>	<p>1204-08-74, WISC 2025146 Mount Horeb – Madison West Verona Ave/Epic Ln to STH 69 USH 18 Dane County</p>
--	---

Letting of January 14, 2025

This is Addendum No. 02, which provides for the following:

Plan Sheets:

Added Plan Sheets	
Plan Sheet	Plan Sheet Title (brief description of why sheet was added)
616A-616C	Structure B-13-0383 (Wing 3)

The responsibility for notifying potential subcontractors and suppliers of these changes remains with the prime contractor.

Sincerely,

Mike Coleman

Proposal Development Specialist
Proposal Management Section

END OF ADDENDUM

STATE PROJECT NUMBER
1204-08-73

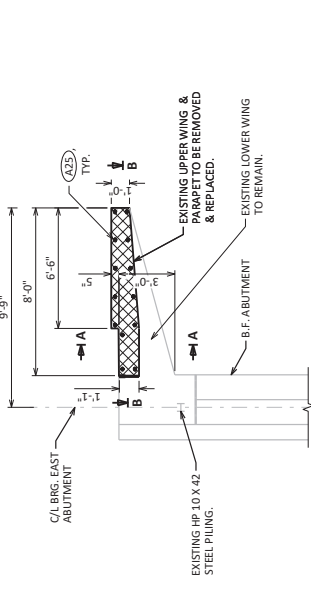
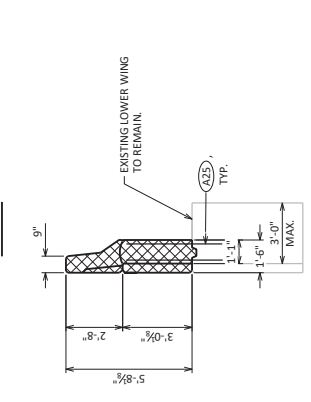
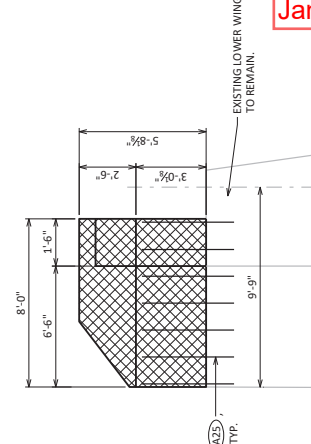
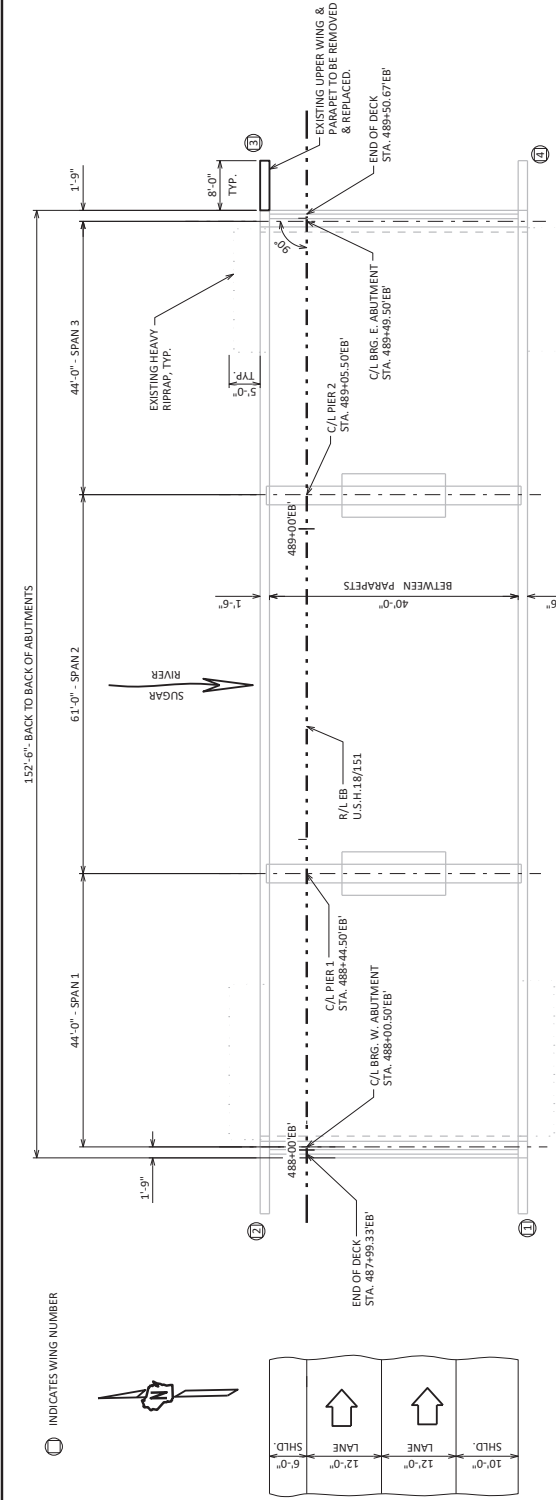
DESIGN DATA

LIVE LOAD: (OBTAINED FROM HSI 11/2023)
 DESIGN LOADS: HS-20
 OPERATING RATING: HS-49
 WISCONSIN REINFORCEMENT PERMIT VEHICLE (WIS-SRV): 250 (KIPS)

MATERIAL PROPERTIES:
 CONCRETE MASONRY $f'_m = 3,500$ PSI
 BAR STEEL REINFORCEMENT GRADE 60 $f_y = 60,000$ PSI

GENERAL NOTES

- DRAWINGS SHALL NOT BE SCALED.
- BAR STEEL REINFORCEMENT SHALL BE EMBEDDED 2" CLEAR UNLESS OTHERWISE SHOWN OR NOTED.
- THE FIRST OR FIRST TWO DIGITS OF THE BAR MARK SIGNIFIES THE BAR SIZE.
- BEVEL EXPOSED EDGES OF CONCRETE 1/2" UNLESS OTHERWISE NOTED.
- PIGMENTED SURFACE SEALER TO BE APPLIED TO THE FRONT FACE AND TOP OF NEW PARAPET ON WING.
- DIMENSIONS SHOWN ARE BASED ON THE ORIGINAL STRUCTURE PLANS.
- ALL LINES OF REMOVAL SHALL BE DEFINED BY A 1" DEEP SAW CUT.
- THE QUANTITY FOR STRUCTURE BACKFILL IS CALCULATED BASED ON THE DETAIL SHOWN IN THE PLANS.
- ANY EXCAVATION REQUIRED TO COMPLETE THE NORTHWEST WING REPLACEMENT WORK SHALL BE INCLUDED IN THE "EXCAVATION FOR STRUCTURES BRIDGES B-13-383" BID ITEM IN THE AECOM 1204-08-73 BRIDGE WIDENING PLANS.



Addendum No. 02
 ID 1204-08-73
 Added Sheet 616A
 January 10, 2025

LIST OF DRAWINGS:

- REMOVAL DETAILS
- WING 3 DETAILS
- SLOPED FACE PARAPET "B"

STRUCTURE DESIGN CONTACTS:
 ENGELS VARGAS 608-267-7111
 DOMINIQUE BECHLE 608-261-8205

NO. DATE REVISION BY

8

BUREAU OF STRUCTURES

ACCEPTED CHIEF STRUCTURES DESIGN ENGINEER DATE 11/1/24

STRUCTURE B-13-383

COUNTY DATE TOWN VERONA

DESIGN SPEC. U.S.H. 18 EB / U.S.H. 151 NB OVER SUGAR RIVER

REHABILITATION / MAINTENANCE / IMPROVEMENT BY DATE

RESIGNED EJV LKCD DMB BY EJV LKCD DMB

BRANS EJV LKCD DMB

SHEET 1 OF 3

REMOVAL DETAILS

616A

DATE: NOV. 2024

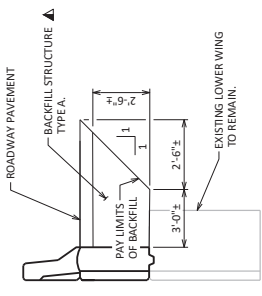
TOTAL ESTIMATED QUANTITIES

BID ITEM NUMBER	BID ITEMS	UNIT	TOTALS
203.0220	REMOVING STRUCTURE B-13-383	EACH	1
210.1500	BACKFILL STRUCTURE TYPE A	TON	7
502.0100	CONCRETE MASONRY BRIDGES	CY	2
502.3210	PIGMENTED SURFACE SEALER	SY	3
502.4205	ADHESIVE ANCHORS NO. 5 BAR	EACH	24
505.0600	BAR STEEL REINFORCEMENT HCS COATED STRUCTURES	LB	280
516.0500	RUBBERIZED MEMBRANE WATERPROOFING	SY	2
	NON-BID ITEMS		
	FILLER	Size	3/4"

CONCRETE REMOVAL AREAS.

▲ SALVAGE EXISTING #4 VERTICAL REINFORCEMENT & EXTEND FULL LENGTH INTO NEW WORK.

▲ BACKFILL PAY LIMITS INCLUDES THE ENTIRE BACKFACE LENGTH OF THE UPPER WING.



BILL OF BARS

NOTE: THE FIRST OR FIRST TWO DIGITS OF THE BAR MARK SIGNIFIES THE BAR SIZE.

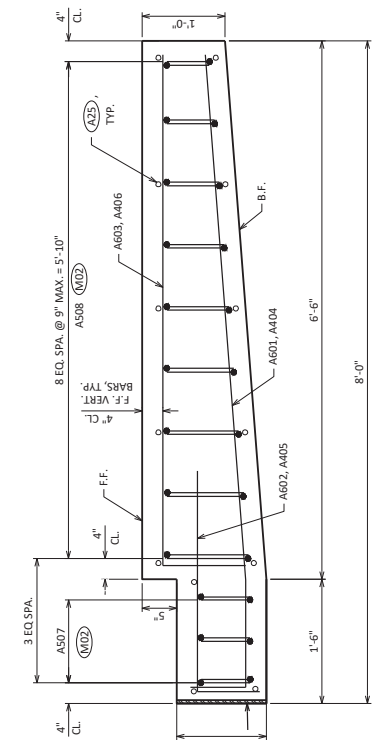
BAR MARK	NO. REQ'D	LENGTH	BAR SERIES	LOCATION
A601	X 1	8'-2"	X	HORIZ. B.F. UPPER WING - TOP
A602	X 1	4'-1"	X	HORIZ. F.F. UPPER WING - TOP
A603	X 1	7'-0"	X	HORIZ. F.F. UPPER WING - TOP
A404	X 4	8'-3"	X	HORIZ. B.F. UPPER WING
A405	X 3	3'-6"	X	HORIZ. F.F. UPPER WING
A406	X 3	7'-1"	X	HORIZ. F.F. UPPER WING
A507	X 6	4'-1"	X	VERT. UPPER WING
A508	X 1B	3'-10"	X	▲ VERT. UPPER WING

▲ LENGTH SHOWN FOR BAR IS AN AVERAGE AND SHOULD ONLY BE USED FOR BAR WEIGHT CALCULATIONS. SEE BAR SERIES TABLE FOR ACTUAL LENGTHS.

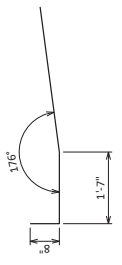
BAR SERIES TABLE

BUNDLE AND TAG EACH SERIES SEPARATELY.

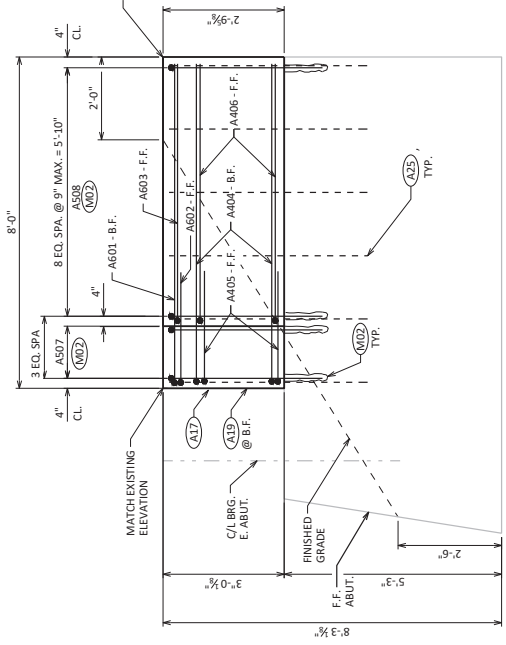
BAR MARK	NO. REQ'D	LENGTH
A508	2 SERIES OF 9	3'-7" TO 4'-1"



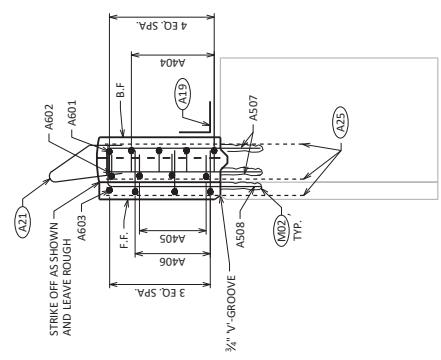
WING 3 PLAN
SHOWING REINFORCEMENT



A601, A404



SECTION B-B



SECTION A-A

- (A17) 1/2" FILLER (INCLUDED IN WING LENGTH). SEAL ALL JOINTS WITH 1/2" POLYURETHANE JOINT SEALER WITH NON-STAINING GRAY NON-BITUMINOUS JOINT SEALER. (1" DEEP AND HOLD 3/8" BELOW SURFACE OF CONCRETE). EXTEND SEALER 3" BELOW GUTTER LINE AT INSIDE FACE.
- (A19) 18" (RWV) RUBBERIZED MEMBRANE WATERPROOFING SEAL ALL HORIZ. & VERT. JOINTS AT BACKFACE.
- (A21) FOR PPT. BARS & DIMENSIONS SEE PARAPET SHEET.
- (A25) SALVAGE EXISTING #4 VERTICAL REINFORCEMENT AND EXTEND FULL LENGTH INTO NEW WORK.
- (M02) ADHESIVE ANCHORS NO. 5 BARS; EMBED 8" INTO EXISTING LOWER WING. A MINIMUM SPACING AND MINIMUM EDGE DISTANCE OF 3 3/4".

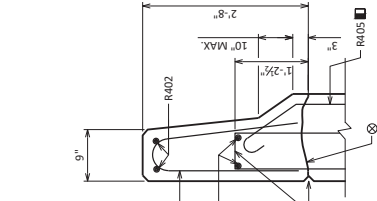
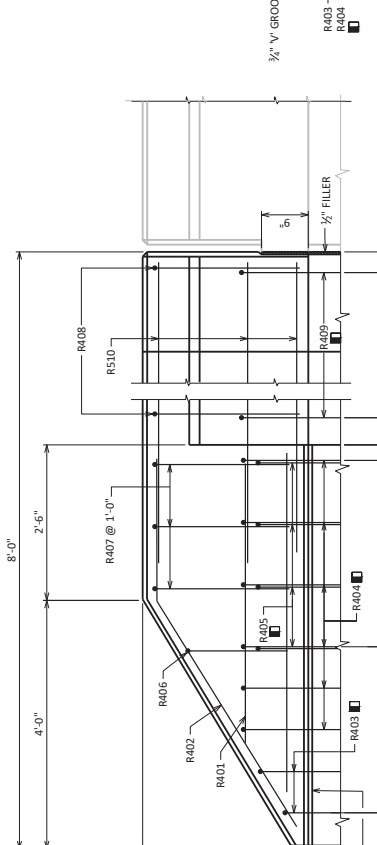
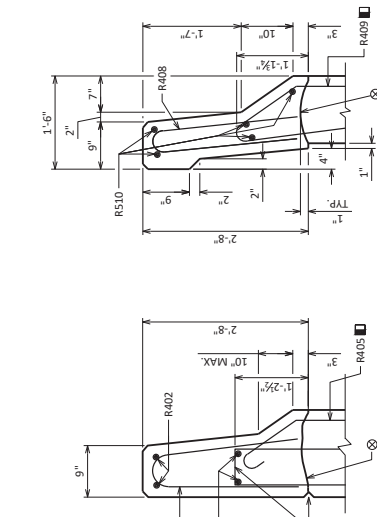
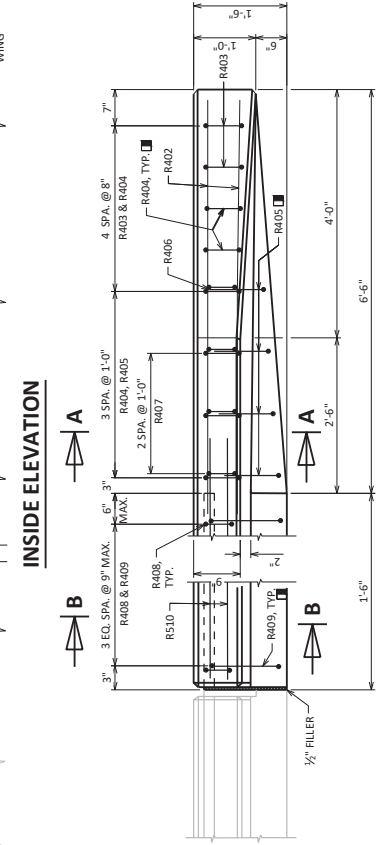
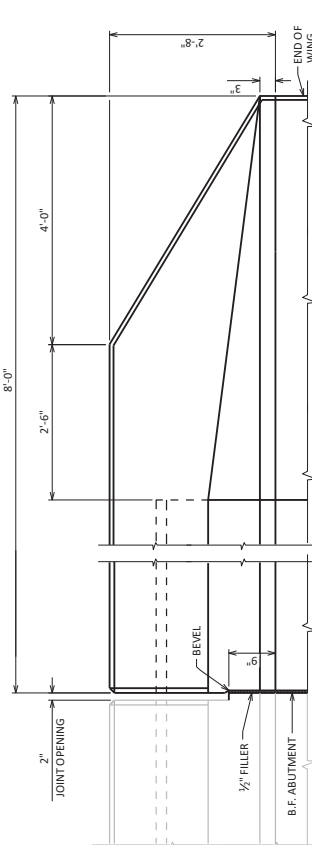
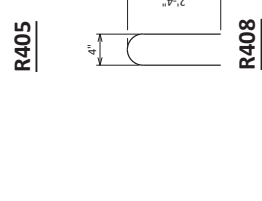
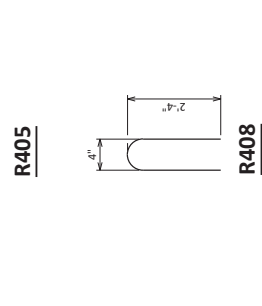
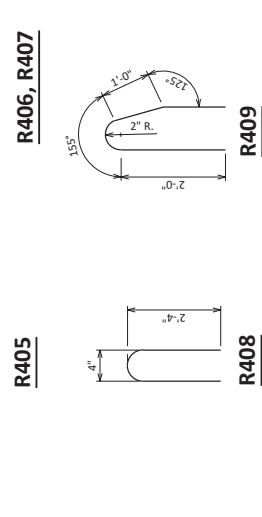
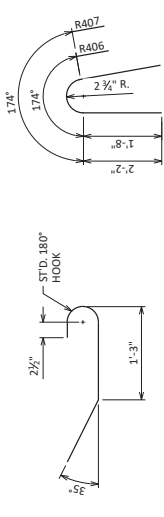
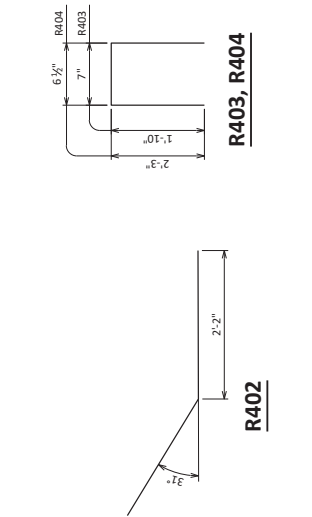
Addendum No. 02
ID 1204-08-73
Added Sheet 616B
January 10, 2025

NO.	DATE	REVISION	BY
STATE OF WISCONSIN DEPARTMENT OF TRANSPORTATION STRUCTURES DESIGN SECTION			
STRUCTURE B-13-383		DESIGNED BY	DMB
		REVISED BY	EJV
WING 3 DETAILS		SHEET 2	
		616B	

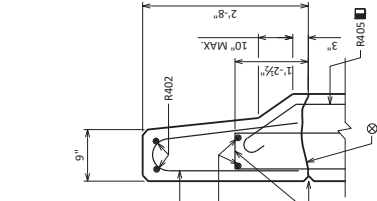
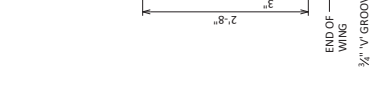
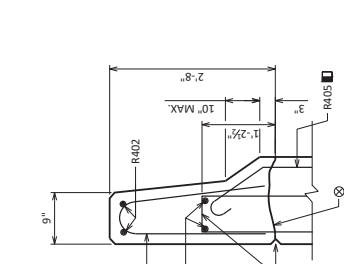
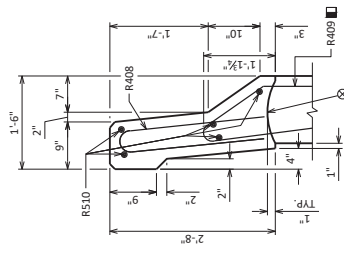
BILL OF BARS
NOTE: THE FIRST OR FIRST TWO DIGITS OF THE BAR MARK SIGNIFIES THE BAR SIZE.

BAR MARK	COAT	NO. RECD	LENGTH	BENT	LOCATION
R401	X	2	4'-6"	X	WING 3 HORIZ.
R402	X	2	6'-8"	X	WING 3
R403	X	2	4'-1"	X	WING 3 STRIRUPS
R404	X	6	4'-11"	X	WING 3 STRIRUPS
R405	X	4	3'-1"	X	WING 3 VERT.
R406	X	1	4'-0"	X	WING 3 VERT.
R407	X	3	5'-0"	X	WING 3 VERT.
R408	X	4	4'-10"	X	WING 3 VERT.
R409	X	4	4'-2"	X	WING 3 STRIRUPS
R510	X	5	3'-8"	X	WING 3 HORIZ.

Addendum No. 02
ID 1204-08-73
Added Sheet 616C
January 10, 2025



■ R403, R404, R405, AND R409 BARS TO BE TIED TO WING STEEL BEFORE WING IS POURED.
⊗ CONST. JOINT - STRIKE OFF AS SHOWN



INSIDE ELEVATION

OUTSIDE ELEVATION

PLAN

NO.	DATE	REVISION	BY
STATE OF WISCONSIN DEPARTMENT OF TRANSPORTATION STRUCTURES DESIGN SECTION			
STRUCTURE B-13-383			
DESIGNED BY	CHKD BY	APP'D BY	DMB
SLOPED FACE PARAPET "B"			SHEET 3
616C			