



Wisconsin Department of Transportation

December 6, 2024

Division of Transportation Systems Development

Bureau of Project Development
4822 Madison Yards Way, 4th Floor South
Madison, WI 53705

Telephone: (608) 266-1631
Facsimile (FAX): (608) 266-8459

NOTICE TO ALL CONTRACTORS:

Proposal #18: 4540-34-71, WIS2025107
Cedar Grove–Sheboygan Falls
CTH D to STH 28
STH 32
Sheboygan County

4540-36-71, WIS2025108
Cedar Grove–Sheboygan Falls
CTH D to STH 28
STH 32
Sheboygan County

Letting of December 10, 2024

This is Addendum No. 03, which provides for the following:

Schedule of Items:

Added Bid Item Quantities					
Bid Item	Item Description	Unit	Proposal Total Prior to Addendum	Quantity Added	Proposal Total After Addendum
602.1500	Concrete Steps	SF	0	18	18

Plan Sheets:

Revised Plan Sheets	
Plan Sheet	Plan Sheet Title (brief description of changes to sheet)
43	Curb Ramp Detail Sheet – Revised Concrete Pavement Label
44	Curb Ramp Detail Sheet – Revised Concrete Pavement Label
46	Curb Ramp Detail Sheet – Revised Concrete Pavement Label
115	Miscellaneous Quantity Sheet – Added Concrete Steps MQ Table

Other

Revised the Contract Completion Time from October 3, 2025 to October 31, 2025.

Schedule of Items

Attached, dated December 6, 2024, are the revised Schedule of Items Page 12.

Plan Sheets

The following 8½ x 11-inch sheets are attached and made part of the plans for this proposal:

Revised: 43, 44, 46, and 115

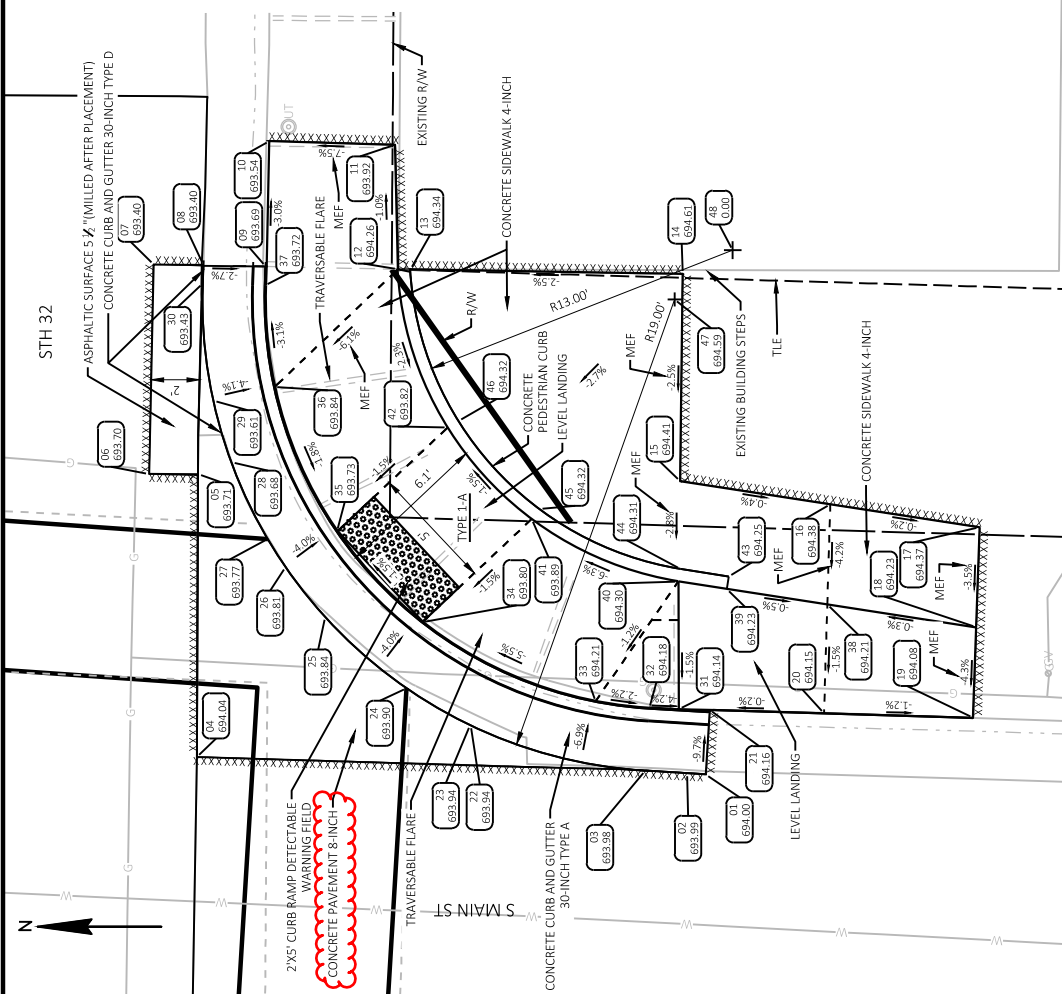
The responsibility for notifying potential subcontractors and suppliers of these changes remains with the prime contractor.

Sincerely,

Mike Coleman

Proposal Development Specialist
Proposal Management Section

END OF ADDENDUM



32-D INT-SE CURB RAMP						32-D INT-SE CURB RAMP					
POINT NUMBER	STATION	OFFSET	ELEVATION	NORTHING	EASTING	POINT NUMBER	STATION	OFFSET	ELEVATION	NORTHING	EASTING
01	76+30.66	40.50' LT	694.00	111421.12	190400.98	25	76+24.45	25.13' LT	693.84	111436.44	190407.32
02	76+30.62	39.75' LT	693.99	111421.87	190401.03	26	76+22.46	23.52' LT	693.81	111438.03	190409.33
03	76+30.53	38.06' LT	693.98	111423.56	190401.13	27	76+21.34	22.79' LT	693.77	111438.75	190410.46
04	76+30.14	20.02' LT	694.04	111441.60	190401.68	28	76+18.26	21.30' LT	693.68	111440.21	190413.55
05	76+18.75	19.96' LT	693.71	111441.56	190413.07	29	76+15.80	20.56' LT	693.61	111440.93	190416.02
06	76+18.76	17.99' LT	693.70	111443.52	190413.07	30	76+11.08	20.09' LT	693.43	111441.37	190420.74
07	76+10.34	18.11' LT	693.40	111443.34	190421.50	31	76+28.05	39.39' LT	694.14	111422.21	190403.60
08	76+10.33	20.11' LT	693.40	111441.34	190421.49	32	76+28.03	38.20' LT	694.18	111423.40	190403.63
09	76+10.37	22.61' LT	693.69	111438.84	190421.42	33	76+27.77	36.04' LT	694.21	111425.55	190403.91
10	76+05.32	22.72' LT	693.54	111438.69	190426.47	34	76+24.64	29.03' LT	693.80	111432.54	190407.10
11	76+05.44	27.77' LT	693.92	111433.64	190426.31	35	76+21.02	25.57' LT	693.73	111435.97	190410.75
12	76+10.44	27.93' LT	694.26	111435.51	190421.31	36	76+15.21	22.99' LT	693.84	111438.50	190416.58
13	76+10.45	28.44' LT	694.34	111433.01	190421.30	37	76+11.14	22.59' LT	693.72	111438.87	190420.65
14	76+10.54	39.40' LT	694.61	111422.05	190421.11	38	76+23.78	45.33' LT	694.21	111416.23	190407.82
15	76+18.87	39.36' LT	694.41	111422.16	190412.78	39	76+23.19	41.28' LT	694.23	111420.28	190408.44
16	76+19.75	45.42' LT	694.38	111416.11	190411.85	40	76+22.91	39.33' LT	694.30	111422.23	190408.74
17	76+20.63	51.43' LT	694.37	111410.10	190410.93	41	76+20.45	33.41' LT	693.89	111428.13	190411.26
18	76+24.65	51.33' LT	694.23	111410.24	190406.90	42	76+16.79	29.99' LT	693.82	111431.51	190414.94
19	76+28.30	51.23' LT	694.08	111410.37	190403.26	43	76+22.69	41.35' LT	694.25	111420.20	190408.95
20	76+28.17	45.24' LT	694.15	111416.36	190403.44	44	76+22.41	39.41' LT	694.31	111422.14	190409.25
21	76+28.07	40.63' LT	694.16	111420.96	190403.58	45	76+20.04	33.71' LT	694.32	111427.82	190411.67
22	76+28.76	31.01' LT	693.94	111430.59	190402.97	46	76+16.52	30.43' LT	694.32	111433.07	190415.21
23	76+28.75	31.00' LT	693.94	111430.60	190402.97	47	76+11.56	39.08' LT	694.59	111422.38	190420.10
24	76+27.29	28.43' LT	693.90	111433.16	190404.46	48	76+09.56	41.41' LT	0.00	111420.04	190422.08

Addendum No. 03
ID 4540-36-71
Revised Sheet 43
December 6, 2024

- NOTES:
- CONTRACTOR TO FIELD VERIFY ELEVATION, GRADES, SLOPES, LENGTHS AND MATCH POINTS PRIOR TO CURB RAMP AND SIDEWALK CONSTRUCTION.
 - THE CURB RAMP SHALL BE CONSTRUCTED TO MEET THE FOLLOWING CONDITIONS:
 - SEE STANDARD DETAIL DRAWINGS FOR COMPLETE CURB RAMP REQUIREMENTS
 - ALL STATION AND OFFSETS ARE REFERENCED TO STH 32 ALIGNMENT.

LEGEND

DETECTABLE WARNING FIELD

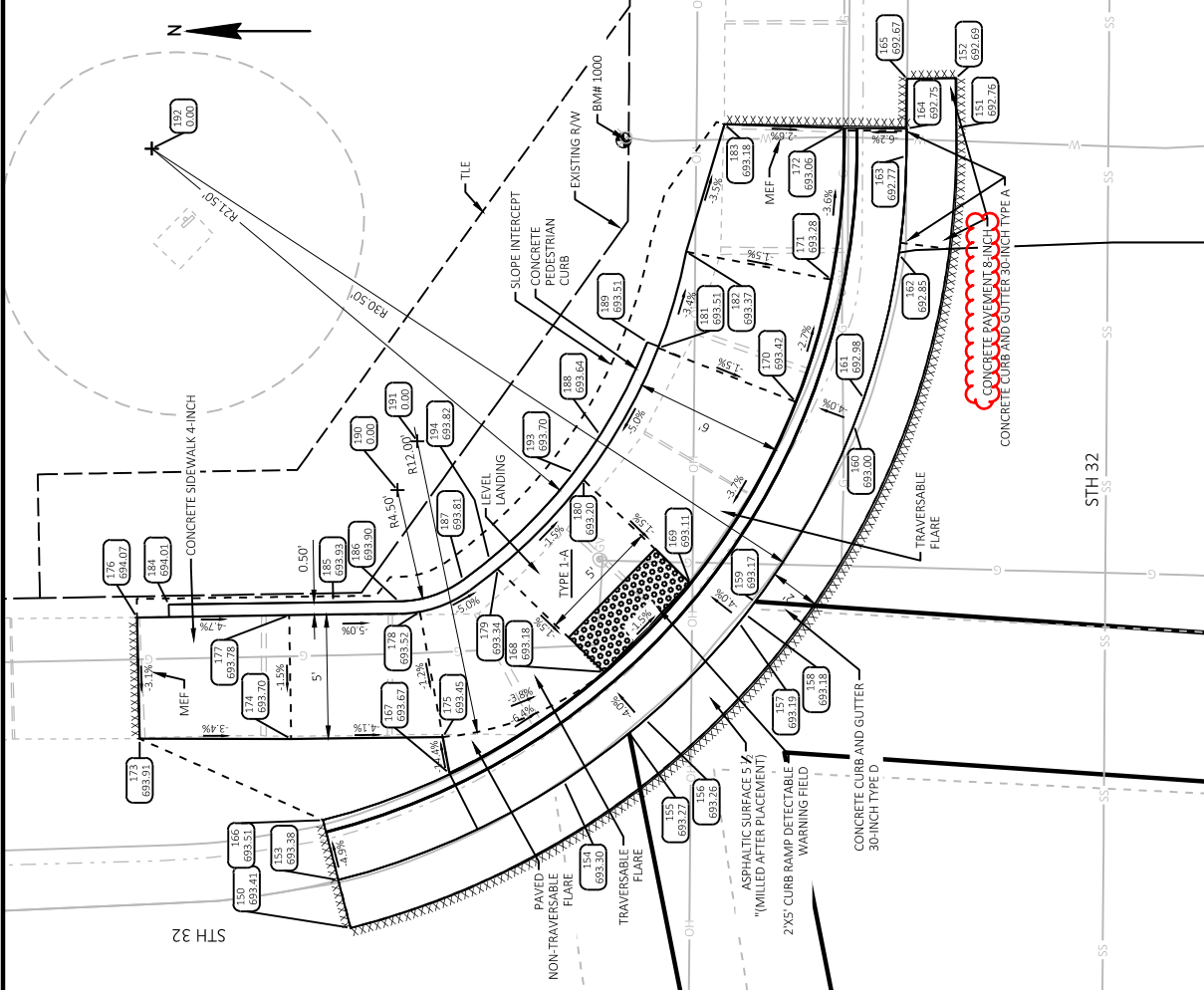
SAWCUT

Addendum No. 03
ID 4540-36-71
Revised Sheet 46
December 6, 2024

BENCH MARKS		
NO.	STATION	ELEV.
1000	75+99.77 RT	696.02
	CHS "X" NW FLANGE BOLT ON HHD	

32-D INT NE CURB RAMP			
POINT NUMBER	STATION	OFFSET	ELEVATION
150	76+91.65	19.11' RT	693.41
151	75+99.15	18.21' RT	693.76
152	75+97.15	18.25' RT	692.69
153	76+92.11	21.06' RT	693.38
154	76+82.69	24.91' RT	693.30
155	76+80.25	26.79' RT	693.27
156	76+79.59	27.33' RT	693.26
157	76+19.22	26.81' RT	693.19
158	76+18.89	26.55' RT	693.18
159	76+18.36	26.16' RT	693.17
160	76+11.19	22.23' RT	693.00
161	76+10.12	21.84' RT	692.98
162	76+04.29	20.47' RT	692.85
163	76+00.30	20.21' RT	692.77
164	75+99.20	20.21' RT	692.75
165	75+97.20	20.20' RT	692.67
166	76+92.69	23.49' RT	693.51
167	76+87.55	25.30' RT	693.67
168	76+81.22	29.28' RT	693.18
169	76+17.64	28.80' RT	693.11
170	76+10.28	24.60' RT	693.42
171	76+05.32	23.21' RT	693.28
172	75+99.20	22.71' RT	693.06

32-D INT NE CURB RAMP			
POINT NUMBER	STATION	OFFSET	ELEVATION
173	77+00.05	26.90' RT	693.91
174	76+93.92	26.79' RT	693.70
175	76+87.79	26.76' RT	693.45
176	77+00.06	31.81' RT	694.07
177	76+93.91	31.79' RT	693.78
178	76+88.63	31.84' RT	693.52
179	76+85.45	33.51' RT	693.34
180	76+13.51	33.14' RT	693.20
181	76+08.15	30.17' RT	693.51
182	76+04.25	29.07' RT	693.37
183	75+99.08	27.57' RT	693.18
184	76+98.77	32.31' RT	694.01
185	76+92.12	32.29' RT	693.93
186	76+89.48	32.27' RT	693.90
187	76+86.88	33.08' RT	693.81
188	76+11.69	32.49' RT	693.64
189	76+07.92	30.61' RT	693.51
190	76+89.45	36.77' RT	0.00
191	76+88.61	38.73' RT	0.00
192	76+00.27	50.71' RT	0.00
193	76+13.21	33.54' RT	693.70
194	76+85.76	33.91' RT	693.82



- NOTES:
1. CONTRACTOR TO FIELD VERIFY ELEVATION, GRADES, SLOPES, LENGTHS AND MATCH POINTS PRIOR TO CURB RAMP AND SIDEWALK CONSTRUCTION.
 2. THE ENGINEER MAY ADJUST ELEVATIONS TO FIELD CONDITIONS.
 3. SEE STANDARD SPECIFICATIONS FOR CONSTRUCTION OF CURB RAMP REQUIREMENTS.
 4. ALL STATION AND OFFSETS ARE REFERENCED TO STH 32 ALIGNMENT.

LEGEND

DETECTABLE WARNING FLARE
XXXXXXX
SAWCUT

BASE AGGREGATE DENSE 3/4-INCH			
STATION TO STATION		TON	
STH 32	4540-34-71		
	187+96 - 195+25	47	
	336+50 - 340+09	16	
	390+77 - 395+35	52	
	526+00 - 530+85	82	
	SUBTOTAL	397	
	4540-36-71		
	103+33 - 130+49	92	
	131+31 - 158+65	99	
	158+65 - 187+96	104	
	192+25 - 195+43	13	
	199+50 - 240+02	342	
	240+02 - 265+74	91	
	267+01 - 293+13	89	
	293+13 - 300+48	47	
	301+51 - 318+82	54	
	319+46 - 336+50	58	
	340+09 - 346+37	57	
	346+37 - 357+84	58	
	357+84 - 368+85	37	
	395+35 - 400+99	19	
	400+99 - 434+52	159	
	461+00 - 489+35	142	
	489+35 - 496+00	21	
	496+00 - 517+54	72	
	517+54 - 526+00	29	
	530+85 - 541+00	35	
	545+86 - 561+99	141	
	561+99 - 584+15	156	
	584+45 - 607+55	82	
	608+82 - 617+66	38	
	SUBTOTAL	1,835	
	PROJECT TOTALS	2,032	

BASE AGGREGATE DENSE 1 1/4-INCH			
STATION TO STATION		TON	
STH 32	4540-34-71		
	99+91 - 100+27	141	
	187+96 - 192+25	643	
	337+48 - 338+11	243	
	391+00 - 395+10	624	
	526+75 - 530+85	830	
	SUBTOTAL	2,481	
	4540-36-71		
	73+15 - 73+29 LT & RT	3	
	76+10 - 76+31 LT	29	
	75+97 - 77+00 RT	28	
	75+97 - 97+99 RT	24	
	76+61 - 76+90 LT	21	
	80+42 - 80+75 RT	13	
	81+06 - 81+25 LT	14	
	81+11 - 81+39 RT	20	
	85+50 - 85+75 RT	16	
	85+48 - 85+72 LT	21	
	86+08 - 86+34 LT	15	
	92+66 - 92+93 LT	20	
	92+64 - 92+93 RT	20	
	93+17 - 93+42 LT	19	
	93+22 - 93+52 RT	26	
	99+36 - 99+91	43	
	102+48 - 102+78 RT	19	
	102+46 - 102+78 LT	18	
	140+01 - 140+66	252	
	180+55 - 181+09	208	
	205+11 - 205+71	230	
	241+85 - 242+63	300	
	259+52 - 260+00	188	
	297+95 - 299+70	235	
	344+45 - 348+40	282	
	383+60 RT	1	
	388+16 RT	1	
	405+37 - 406+12	291	
	478+73 - 479+50	105	
	482+45 - 484+50	189	
	584+84 - 585+52	325	
	SUBTOTAL	2,976	
	PROJECT TOTALS	5,457	

CONCRETE PAVEMENT			
STATION TO STATION		8-INCH	SY
STH 32	4540-36-71		
	73+15 - 73+29 LT & RT	8	
	75+97 - 76+50 LT & RT	8	
	PROJECT TOTALS	16	

CONCRETE PAVEMENT			
STATION TO STATION		8-INCH	SY
STH 32	4540-36-71		
	73+15 - 73+29 LT & RT	5	
	75+97 - 76+50 LT & RT	16	
	PROJECT TOTALS	21	

CONCRETE STEPS			
STATION TO STATION		SF	
STH 32	4540-36-71		
	73+15 - 73+29 LT & RT	18	
	75+97 - 76+50 LT & RT	18	
	PROJECT TOTALS	36	

CONCRETE CURB & GUTTER SUMMARY							
STATION TO STATION		30-INCH TYPE A	30-INCH PEDESTRIAN	60-INCH CONSTRUCTION STAKING CURB	650-5500 CONSTRUCTION STAKING CURB	GUTTER AND CURB & GUTTER	
STH 32	4540-34-71						
	99+91 - 100+27	-	72	-	-		72
	SUBTOTAL	0	72	0	0		72
	4540-36-71						
	73+16 - 73+29 LT & RT	21	-	-	-		21
	75+97 RT - 76+86 RT	7	36	24	67		74
	76+10 LT - 76+31 LT	2	31	41	74		59
	9+63 RT - 9+79 RT	23	12	24	25		25
	76+63 LT - 76+80 LT	-	25	-	-		18
	80+61 RT - 80+73 RT	-	16	26	42		18
	81+06 LT - 81+25 LT	-	18	-	-		24
	81+12 RT - 81+33 RT	-	24	-	-		35
	85+48 LT - 85+70 LT	-	25	-	-		21
	85+55 RT - 85+73 RT	-	18	-	-		27
	86+10 LT - 86+25 LT	-	21	-	-		24
	92+66 LT - 92+93 LT	-	27	-	-		33
	92+81 RT - 92+91 RT	-	24	4	28		25
	93+17 LT - 93+42 LT	-	25	-	-		50
	93+24 RT - 93+43 RT	-	34	-	-		6
	99+33 LT - 99+91 LT & RT	-	33	-	-		6
	102+55 - 102+76 LT & RT	-	50	-	-		6
	383+60 RT	-	6	-	-		638
	388+15 RT	-	6	-	-		710
	SUBTOTAL	53	431	154	154		
	PROJECT TOTALS	53	503	154	154		

CONCRETE SIDEWALK			
STATION TO STATION		4-INCH	EA
STH 32	4540-34-71		
	99+91 - 100+27	440	-
	SUBTOTAL	440	0
	4540-36-71		
	73+16 - 73+25 LT & RT	11	-
	75+99 RT - 77+00 RT	225	1
	76+10 LT - 76+28 LT	328	1
	76+65 LT - 76+90 LT	249	1
	9+57 RT - 9+76 RT	196	1
	80+42 RT - 80+71 RT	133	1
	81+09 LT - 81+25 LT	100	1
	81+15 RT - 81+39 RT	236	1
	85+48 LT - 85+72 LT	220	1
	85+55 RT - 85+76 RT	188	1
	86+15 LT - 86+37 LT	93	1
	92+64 RT - 92+87 RT	230	1
	92+72 LT - 92+92 LT	122	1
	93+22 LT - 93+42 LT	122	1
	93+28 RT - 93+52 RT	241	1
	99+75 - 99+91 RT	76	-
	102+46 LT - 102+69 LT	136	1
	102+46 RT - 102+69 RT	124	1
	SUBTOTAL	3,030	16
	PROJECT TOTALS	3,470	16

Addendum No. 03
ID 4540-36-71
Revised Sheet 115
December 6, 2024

NOTE: ALL ITEMS ON THIS SHEET ARE CATEGORY 0010 UNLESS OTHERWISE NOTED.



Proposal Schedule of Items

Page 12 of 12

Proposal ID: 20241210018 Project(s): 4540-34-71, 4540-36-71

Federal ID(s): WISC 2025107, WISC 2025108

SECTION: 0001

Contract Items

Alt Set ID:

Alt Mbr ID:

Proposal Line Number	Item ID Description	Approximate Quantity and Units	Unit Price	Bid Amount
0322	SPV.0090 Special 01. Culvert Pipe Reinforced Concrete Horizontal Elliptical 72x113-Inch	102.000 LF	_____.	_____.
0324	SPV.0180 Special 01. Removing Distressed Asphaltic Surface Milling	7,595.000 SY	_____.	_____.
0326	614.8010 Anchor Post Assembly Top Mount	3.000 EACH	_____.	_____.
0328	602.1500 Concrete Steps	18.000 SF	_____.	_____.
Section: 0001			Total:	_____.
			Total Bid:	_____.

