



Wisconsin Department of Transportation

November 26, 2024

Division of Transportation Systems Development

Bureau of Project Development
4822 Madison Yards Way, 4th Floor South
Madison, WI 53705

Telephone: (608) 266-1631
Facsimile (FAX): (608) 266-8459

NOTICE TO ALL CONTRACTORS:

Proposal #14: 1130-64-71, WISC 2025135
Appleton – De Pere
I-41 Mainline, STH 96 – RR Bridge
IH 041
Outagamie County

1130-64-72, WISC 2025136
Appleton – De Pere
I-41 Mainline, RR Bridge – Lynndale
IH 041
Outagamie County

1130-64-71, WISC 2025137
Appleton – De Pere
Railroad Structures
IH 041
Outagamie County

Letting of December 10, 2024

This is Addendum No. 02, which provides for the following:

Special Provisions:

Revised Special Provisions	
Article No.	Description
4.2	Notice to Contractor, Coordination with Project ID 1130-64-76/81 (STH 15 Interchange/Capitol Drive project)
10.2	QMP Ride for PCC Riding Surfaces
13.21	Temporary Water Diversion B-44-347 Station 670SB+71, Item SPV.0060.0255; Temporary Water Diversion B-44-347 Station 669SB+80, Item SPV.0060.0260; Temporary Water Diversion B-44-348 Station 665NB+92, Item SPV.0060.0265

Added Special Provisions	
Article No.	Description
15.5	Inlet Marker, Item SPV.0060.0270

Schedule of Items:

Revised Bid Item Quantities					
Bid Item	Item Description	Unit	Proposal Total Prior to Addendum	Proposal Quantity Change (-)	Proposal Total After Addendum
205.0100	Excavation Common	CY	247,651	4,300	251,951
611.8110	Adjusting Manhole Covers	Each	44	1	45
611.8120.S	Cover Plates Temporary	Each	232	2	234
SPV.0035.0100	Roadway Embankment	CY	130,700	-3,700	127,000

Added Bid Item Quantities					
Bid Item	Item Description	Unit	Proposal Total Prior to Addendum	Quantity Added	Proposal Total After Addendum
SPV.0060.0270	Inlet Marker	Each	0	229	229

Plan Sheets:

Revised Plan Sheets	
Plan Sheet	Plan Sheet Title (brief description of changes to sheet)
99	Construction Details – Drainage: updated note (1) to refer to standard spec.
101	Construction Details – Drainage: Updated location for removing casting bolts.
468	Stormwater Management – Pond APC Details: Revised name of outlet control structure.
829	Miscellaneous Quantities: Updated/added quantities
862	Miscellaneous Quantities: Updated Excavation Common and Roadway Embankment for Pond APC.
1630	Earthwork Data: Updated end areas and volumes for Pond APC.

Added Plan Sheets	
Plan Sheet	Plan Sheet Title (brief description of why sheet was added)
97A	Construction Details: Provides details for installation of inlet marker.
832A	Miscellaneous Quantity: Added quantity for Inlet Marker.
950A	Miscellaneous Quantities: Added quantity for Inlet Marker.
1315A	Standard Sign: Added to provide details for inlet marker sign referred to in sheet 97A.

The responsibility for notifying potential subcontractors and suppliers of these changes remains with the prime contractor.

Sincerely,

Mike Coleman

Proposal Development Specialist
Proposal Management Section

ADDENDUM NO. 02
1130-64-71, 1130-64-72 and 1130-64-87
November 26, 2024

Special Provisions

4.2 Notice to Contractor, Coordination with Project ID 1130-64-76/81 (STH 15 Interchange/Capitol Drive project).

Replace the third paragraph with the following:

Concrete barrier temporary precast and temporary crash cushions identified as left in place in the 1130-64-76 project will become property of the 1130-64-71/72/87 contractor. The below table identifies the estimated dates this equipment will become the property of this contract; however, the actual date ownership of the barrier and crash cushion transfers occur will be finalized during the weekly traffic meeting.

Roadway	Estimated Station		Offset	Estimated Date of Transfer to 1130-64-71/72/84
	Start	End		
IH 41 NB	570NB+87	595NB+00	Right	June 2025
IH 41 NB	595NB+00	616NB+35	Right	March 2025
IH 41 NB	564NB+20	585NB+00	Left	Notice to Proceed (NTP)
IH 41 NB	585NB+00	593NB+40	Left	June 2025
IH 41 NB	593NB+40	681NB+49	Left	NTP
IH 41 SB	570SB+00	673SB+53	Right	NTP
IH 41 SB	579SB+53	584SB+01	Left	March 2025
IH 41 SB	584SB+01	602SB+45	Left	NTP
IH 41 SB	615SB+70	622SB+19	Left	NTP
STH 15/CTH OO Ramp A	1600NLA+00	616NB+35	Right	June 2025

Maintain and remove the left in place devices per the requirements identified in special provision Maintain and Remove Crash Cushions Temporary Left in Place and Maintain and Remove Concrete Barrier Temporary Precast Left in Place.

10.2 QMP Ride for PCC Riding Surfaces.

In Table 4: Exclusions, replace the seventh exclusion in the Excluded Areas from Smoothness and Localized Roughness column with the following:

Pavements within 25 feet of bridges or bridge approaches not constructed under the contract or 25 feet from terminal headers tying into existing pavement.

**13.21 Temporary Water Diversion B-44-347 Station 670SB+71, Item SPV.0060.0255;
Temporary Water Diversion B-44-347 Station 669NB+80, Item SPV.0060.0260;
Temporary Water Diversion B-44-348 Station 665NB+92, Item SPV.0060.0265.**

Replace entire article language with the following:

A Description

This special provision describes providing temporary water diversion for B-44-347 and B-44-348 during all stages of construction. Conform to the required Standard Specifications, Plan and the methods used must be approved in the Erosion Control Implementation Plan (ECIP).

B Materials

Furnish materials conforming to the necessary Standard Specifications based on the method of construction.

C Construction

C.1 General

Maintain channel flow at all times and minimize erosion into the existing stream using appropriate erosion control measures. Inspect Temporary Water Diversion(s) daily to ensure proper functioning and no erosion is occurring.

Ensure all portions of Temporary Water Diversion(s) accommodate the 2-year recurrence interval stream discharge. Provide overflow through the work zone for storms that exceed the 2-year flow. The 2-year recurrence interval stream discharges are as follows:

B-44-347 Station 670SB+71 76 cubic feet per second.

B-44-347 Station 669NB+80 25 cubic feet per second.

B-44-348 Station 665NB+92 144 cubic feet per second.

Provide hydraulic calculations and temporary water diversion plan details at each required location. Include a summary of the Temporary Water Diversion duration at each required location. All methods of diversion, calculations and plans are subject to approval as part of the ECIP.

C.2 Bypass Pumping

If bypass pumping is used for Temporary Water Diversion, submit the means and methods proposed to be used during construction for approval as part of the ECIP for each location it is required. Include the following in the ECIP: how the intake will be managed to not cause an increase in the background level turbidity during pumping, equipment pumping rate capabilities, discharge energy dissipation, and erosion controls. For bypass pumping that will extend beyond one working day, the ECIP should also include how the work zone will be managed and protected, should the pump fail, be shut down due to unacceptable water quality, or storm water flows exceed the pumping rate of equipment. After the installation of the approved bypass pumping operation, the contractor shall demonstrate that the means and methods will pump the water at an acceptable water quality prior to starting work that necessitates the bypass pumping.

C.3 Temporary Channel

If a temporary channel is used for Temporary Water Diversion, submit the means and methods proposed to be used during construction for approval as part of the ECIP. Properly size pipes and channels to maintain channel flow. At a minimum, line the channel with select crushed material or other means approved by the engineer to stabilize the excavated channel at each end of the temporary bypass structure. Install an impervious barrier to isolate the connection of the temporary bypass channel from the existing channel and to isolate the new culvert work area from the temporary and existing channel to prevent the 2-year storm interval from back flowing in the work area.

C.4 Restoration

Once water flow has been restored to the final location, grade, shape and finish all disturbed areas to their original existing contours or what is shown in the plan.

D Measurement

The department will measure temporary water diversion as each item, acceptably completed.

E Payment

The department will pay for measured quantities at the contract unit price under the following bid item:

ITEM NUMBER	DESCRIPTION	UNIT
-------------	-------------	------

SPV.0060.0255	Temporary Water Diversion B-44-347 Station 670SB+71	EACH
SPV.0060.0260	Temporary Water Diversion B-44-347 Station 669NB+80	EACH
SPV.0060.0265	Temporary Water Diversion B-44-347 Station 665NB+92	EACH

Payment is full compensation for providing hydraulic calculations, plans, installation, daily inspections, any necessary modifications to the Temporary Water Diversion operation and removal when Temporary Water Diversion operation is no longer needed and grading to finished grade.

The department will pay separately for topsoil, seeding, fertilizer, e-mat, mulch and any other items needed for permanent restoration.

NER-210-020 (20210716)

15.5 Inlet Marker, Item SPV.0060.0270.

A Description

This special provision describes furnishing and installing a Type II W5-53S sign to mark inlet locations adjacent to barrier wall or parapets as shown in the plans, in accordance with standard spec 637, and as hereinafter provided.

Refer to WisDOT Sign Plate Manual for details of W5-53S (Low Inlet Marker).

B Materials

Furnish sheet aluminum conforming to standard spec 637.2.1.3.

Furnish reflective sheeting conforming to standard spec 637.2.2.2.

Furnish stainless steel anchors and washers conforming to standard spec 513.2.1.

C Construction

Manufacture, assemble and install inlet marker in accordance with 637.3 of the standard spec.

Install inlet marker against a clean and flat surface.

D Measurement

The department will measure Inlet Marker as each individual marker acceptably completed.

E Payment

The department will pay for measured quantities at the contract unit price under the following bid item:

ITEM NUMBER	DESCRIPTION	UNIT
SPV.0060.0270	Inlet Marker	EACH

Payment is full compensation for providing sign including mounting hardware; and for installing barrier wall inlet marker.

ner41-633 (20241104)

Schedule of Items

Attached, dated November 26, 2024, are the revised Schedule of Items Pages 3, 17, 30, and 37.

Plan Sheets

The following 8½ x 11-inch sheets are attached and made part of the plans for this proposal:

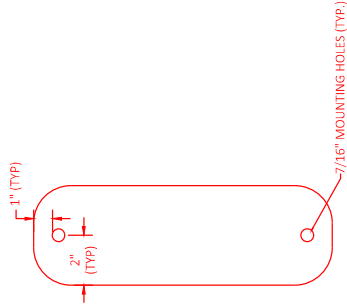
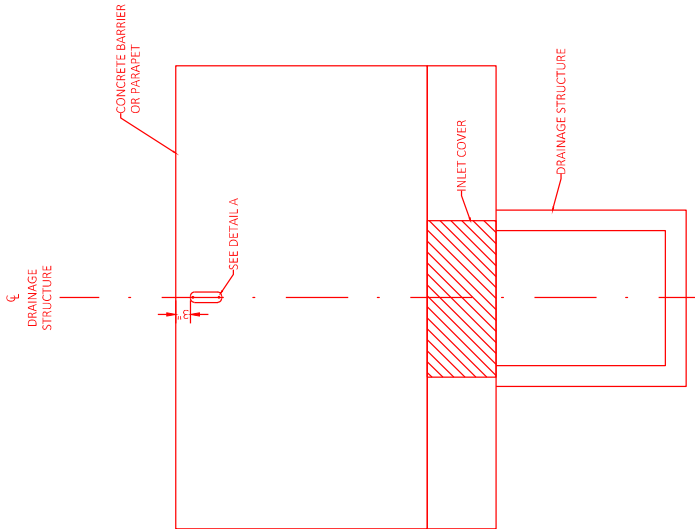
Revised: 99, 101, 468, 829, 862, and 1630

Added: 97A, 832A, 950A, and 1315A

END OF ADDENDUM

2

Addendum No. 02
ID 1130-64-71/72
Added Sheet 97A
November 26, 2024



DETAIL A - MARKER MOUNTING

INLET MARKER
NOT TO SCALE

MARKER MOUNTING NOTES:
STANDARD SIGN W5-53S, SIZE 2M (SIGN PLATE W5-53S, LOW INLET MARKER)
3/8" X 1" STAINLESS STEEL ANCHOR WITH NYLON AND STAINLESS STEEL WASHERS.
ANCHORS SHALL HAVE HEXAGONAL HEADS.
SEE SIGN PLATE A4-8 FOR ADDITIONAL INFORMATION REGARDING WASHERS.

NOTES:

1) REFER TO STANDARD SPECIFICATIONS 209.2, 520.2.5, 520.3.4, 608.2.2, AND 608.3.5 FOR MORE INFORMATION



PROJECT NO: 1130-64-71/72	HWY: IH 41	COUNTY: OUTAGAMIE	CONSTRUCTION DETAILS - DRAINAGE	SHEET 99
FILE NAME: C:\USERS\REGIER\CD\ACCDCOS\54500T\11306471\PROJECT FILES\05611\11306471\54500T\CD-SS.DWG PLOT DATE: 11/19/2024 10:33 AM PLOT BY: ELIZABETH REGIER PLOT SCALE: 1 IN 100 FT				

SPECIAL PROVISION ARTICLE 13.11 - REMOVING CASTING BOLTS LOCATIONS - PROJECT 1130-64-72

STAGE	ROADWAY	STRUCTURE ID
1130-64-72 STAGE 4		
	R/L SB	6145-S2
	R/L SB	6146-S2
	R/L SB	6149-S2
	R/L SB	6406-S4
	R/L SB	6407-S3
	R/L SB	6408-S2
	R/L SB	6409-S2
	R/L SB	6411-S2
	R/L SB	6412A-S2
	R/L SB	6412-S2
	R/L SB	6413-S3
	R/L SB	6414-S4
	R/L SB	6421-S2
	R/L SB	6422-S2
	R/L SB	6426-S3
	R/L SB	6427-S3
	R/L SB	6431A-S3
	R/L SB	6432A-S3
	R/L SB	6432-S3
	R/L SB	6433-S3
	R/L SB	6434A-S2
	R/L SB	6434-S3
	R/L SB	6435A-S3
	R/L SB	6435-S3
	R/L SB	6436-S3
	R/L SB	6437-S3
	R/L SB	6438-S2
	R/L SB	6442-S3
	R/L SB	6443-S3
	R/L SB	6444-S3
	R/L SB	6445-S3
	R/L SB	6446-S3
	R/L SB	6481-S3
	R/L SB	6482-S3
	R/L SB	6484-S3
	R/L SB	6485-S3
	R/L SB	6486-S3
	R/L SB	6487-S3
	NLA	6491A-S4
	R/L SB	6491-S3

STAGE	ROADWAY	STRUCTURE ID
1130-64-72 STAGE 4 CONT.		
	R/L SB	6492-S2
	R/L SB	6493A-S4
	R/L SB	6493-S2
	NLA	6494A-S4
	NLA	6494B-S4
	NLA	6494D-S4
	R/L SB	6494-S3
	R/L SB	6495-S2
	R/L SB	6496-S2
	R/L SB	6497-S2
	R/L SB	6501-S2
	R/L SB	6502-S2
	R/L SB	6503A-S4
	R/L SB	6503-S3
	R/L SB	6505-S2
	R/L SB	6507-S2
	R/L SB	6508A-S4
	R/L SB	6508-S3
	R/L SB	6511-S4
	R/L SB	6512-S4
	R/L SB	6513-S4
	R/L SB	6514-S4
	R/L SB	6515-S2
	R/L SB	6517-S2
	R/L SB	6518-S2
	R/L SB	6520-S2
	R/L SB	6521-S3
	R/L SB	6522-S3
	R/L SB	6523-S3
	R/L SB	6524-S2
	R/L SB	6525-S2
	R/L SB	6527-S2
	R/L SB	6534-S2
	R/L SB	6536-S4
	R/L SB	6538-S4
	R/L SB	6539-S3
	R/L SB	6540-S2
	R/L SB	6542-S2
	R/L SB	6543-S3
	R/L SB	6544-S2

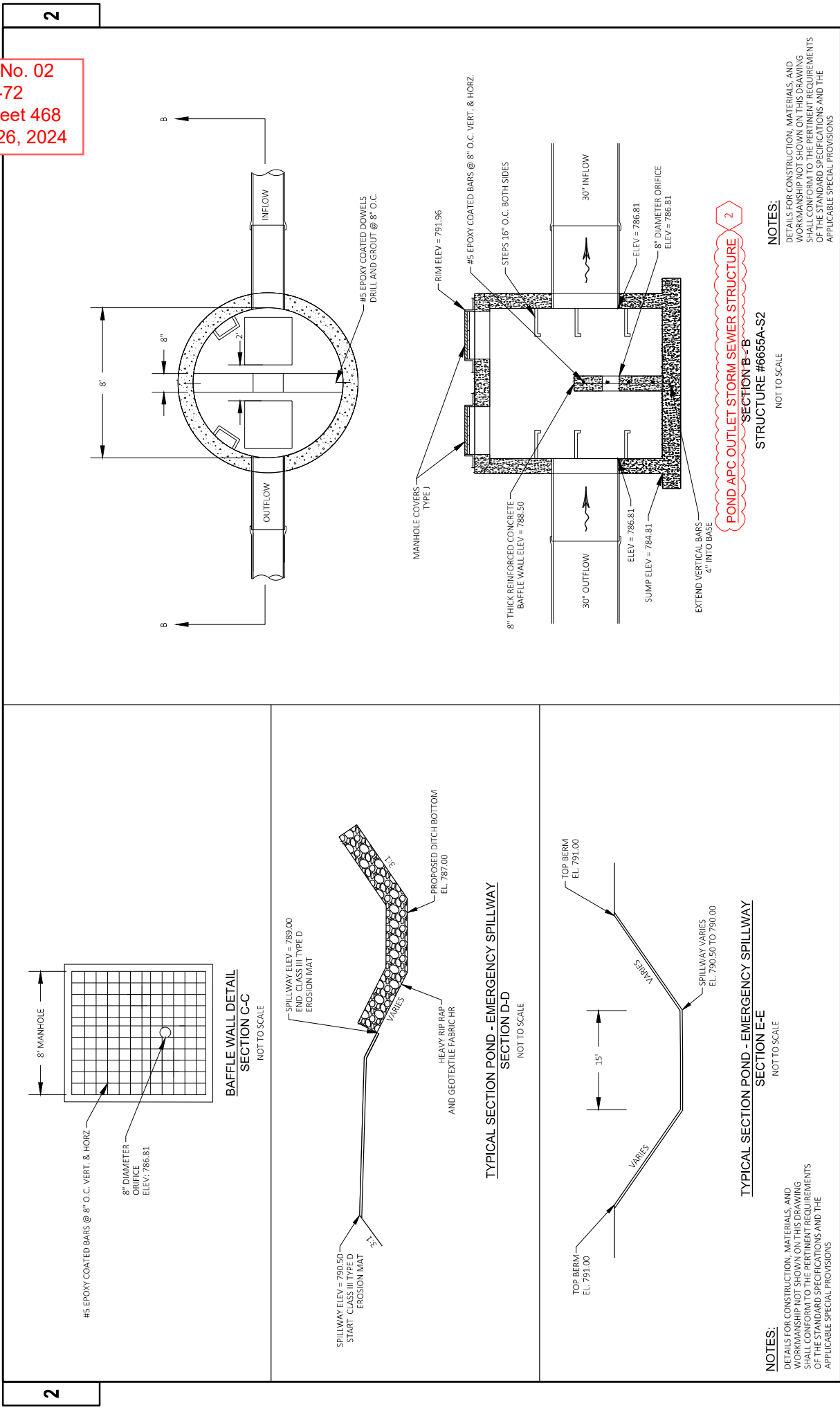
STAGE	ROADWAY	STRUCTURE ID
1130-64-72 STAGE 4 CONT.		
	R/L SB	6545-S2
	R/L SB	6550-S2
	R/L SB	6552-S4
	R/L SB	6553-S3
	R/L SB	6555-S2
	R/L SB	6556-S2
	R/L SB	6560-S2
	R/L SB	6561-S2
	R/L SB	6562-S4
	R/L SB	6563-S3
	R/L SB	6565-S2
	R/L SB	6566-S4
	R/L SB	6567-S3
	R/L SB	6568-S2
	R/L SB	6570-S2
	R/L SB	6571-S2
	R/L SB	6572-S4
	R/L SB	6573-S3
	R/L SB	6575-S2
	R/L SB	6576-S2
	R/L SB	6577-S4
	R/L SB	6578-S3
	R/L SB	6579-S2
	R/L SB	6580-S2
	R/L SB	6581-S2
	R/L SB	6582-S4
	R/L SB	6583-S3
	R/L SB	6585-S2
	R/L SB	6590-S2
	R/L SB	6591-S2
	R/L SB	6592-S4
	R/L SB	6593-S3
	R/L SB	6594-S2
	R/L SB	6595-S2
	R/L SB	6596-S2
	R/L SB	6597-S4
	R/L SB	6598-S3
	R/L SB	6599-S2
	R/L SB	6600-S2
	R/L SB	6601-S2

STAGE	ROADWAY	STRUCTURE ID
1130-64-72 STAGE 4 CONT.		
	R/L SB	6602-S4
	R/L SB	6603-S3
	R/L SB	6605-S2
	R/L SB	6610-S2
	R/L SB	6611-S2
	R/L SB	6612-S4
	R/L SB	6613-S3
	R/L SB	6614-S2
	R/L SB	6615-S2
	R/L SB	6616-S2
	R/L SB	6617-S4
	R/L SB	6618-S3
	R/L SB	6619-S4
	R/L SB	6620-S2
	R/L SB	6625-S2
	R/L SB	6626-S2
	R/L SB	6627-S4
	R/L SB	6628-S3
	R/L SB	6629-S2
	R/L SB	6631-S2
	R/L SB	6632-S4
	R/L SB	6633-S3
	R/L SB	6639-S2
	R/L SB	6641-S4
	R/L SB	6642-S3
	R/L SB	6643-S3
	R/L SB	6646-S2
	R/L SB	6651-S2
	R/L SB	6652-S2
	R/L SB	6654-S2
	R/L SB	6655-S2
	R/L SB	6666-S3
	R/L SB	6667-S3
	R/L SB	6668-S3
	R/L SB	6675-S1
	R/L SB	6677-S4
	R/L SB	6678-S4
	R/L SB	6679-S1
	R/L SB	6692-S2

STAGE	ROADWAY	STRUCTURE ID
1130-64-72 STAGE 4 CONT.		
	R/L SB	6693-S4
	R/L SB	6694-S2
	R/L SB	6697-S4
	R/L SB	EX 6451
	R/L SB	EX 6452
	R/L SB	EX 6453
	R/L SB	EX 6454
	R/L SB	EX 6455
	R/L SB	EX 6458
	R/L SB	EX 6459
	R/L SB	EX 6460
	R/L SB	EX 6461
	R/L SB	EX 6463
	R/L SB	EX 6464
	R/L SB	EX 6465
	R/L SB	EX 6466
	R/L SB	EX 6467
	R/L SB	EX 6470
	R/L SB	EX 6471
	R/L SB	EX 6472
	R/L SB	EX 6476
	R/L SB	EX 6477
	R/L SB	EX 6526

Addendum No. 02
ID 1130-64-71/72
Revised Sheet 101
November 26, 2024

Addendum No. 02
ID 1130-64-72
Revised Sheet 468
November 26, 2024



RECONSTRUCTING AND ADJUSTING STRUCTURES												
CATEGORY	LOCATION	STRUCTURE ID	STATION	OFFSET	STRUCTURE TOP OF ELEVATION	PROPOSED RIM TO ELEVATION INCREASE	RECONSTRUCTING MANHOLES EACH	RECONSTRUCTING INLETS EACH	611.0430	611.8110 ADJUSTING MANHOLE COVERS EACH	611.8110 ADJUSTING INLET COVERS EACH	
1000	1130-64-71	STAGE 3										
	R/L WND	140-S2	1543+75.00	40.00' RT	799.45	800.78	--	--	--	1	--	--
STAGE 3 SUBTOTALS												
							--	--	--	1	--	--
1000	1130-64-71	STAGE 4										
	R/L SB	125.2-S2*	538+31.14	21.15' RT	801.02	801.02	--	--	--	--	1	--
	R/L NB	125.3-S3	538+31.14	21.14' LT	800.96	802.63	--	1	--	--	--	--
	R/L SB	135.2-S2	541+05.00	21.83' RT	802.33	805.92	1	--	--	--	--	--
	R/L SB	145.2-S2	544+00.00	21.83' RT	804.63	807.46	1	--	--	--	--	--
	R/L SB	150.4-S2*	547+30.90	21.83' RT	807.68	810.03	1	--	--	--	--	--
	R/L NB	150.5-S3	547+30.90	21.83' LT	807.71	810.16	1	--	--	--	--	--
	R/L SB	160.2-S2	549+99.99	21.83' RT	808.54	812.12	1	--	--	--	--	--
	R/L SB	170-S2	553+15.00	21.83' RT	811.23	814.57	--	1	--	--	--	--
	R/L SB	220.2-S2	559+00.00	21.83' RT	813.21	816.79	1	--	--	--	--	--
	R/L SB	230.2-S2	561+25.00	21.83' RT	812.23	815.57	--	1	--	--	--	--
	R/L SB	240.2-S2	563+50.00	21.83' RT	809.76	813.13	1	--	--	--	--	--
	R/L SB	250.2-S2	565+75.00	21.83' RT	805.89	809.47	1	--	--	--	--	--
	R/L SB	260.2-S2	568+00.00	21.83' RT	801.12	804.71	1	--	--	--	--	--
STAGE 4 SUBTOTALS							9	3	--	--	1	--
PROJECT 1130-64-71 TOTALS							9	3	--	1	--	1

*SEE BW TO VV-B RECONSTRUCTING INLET CONSTRUCTION DETAIL

COVER PLATES			
611.8120.S			
CATEGORY	ROADWAY	STRUCTURE ID	NOTES
1000	1130-64-71	STAGE 2	
	R/L SB	135.2-S2	2 REMOVE IN STAGE 4
	R/L WND	140-S2	2 REMOVE IN STAGE 3
	R/L SB	145.2-S2	2 REMOVE IN STAGE 4
	R/L SB	160.2-S2	2 REMOVE IN STAGE 4
	R/L SB	170-S2	2 REMOVE IN STAGE 4
	R/L SB	220.2-S2	2 REMOVE IN STAGE 4
	R/L SB	230.2-S2	2 REMOVE IN STAGE 4
	R/L SB	250.2-S2	2 REMOVE IN STAGE 4
	R/L SB	260.2-S2	2 REMOVE IN STAGE 4
STAGE 2 SUBTOTAL		18	
PROJECT 1130-64-71 TOTAL		18	

Addendum No. 02
ID 1130-64-71
Revised Sheet 829
November 26, 2024

INLET MARKER

SPV.0060.0270

INLET MARKER

CATEGORY	LOCATION	STRUCTURE	EACH
1000	PROJECT 1130-64-71 STAGE 1:		
	R/L WND	110.2-S2	1
	R/L SB	125.1-S2	1
	R/L SB	125.2-S2	1
	R/L WND	130.1-S2	1
	R/L WND	130.2-S2	1
	R/L SB	135.1-S2	1
	R/L SB	135.2-S2	1
	R/L WND	140.1-S2	1
	R/L WND	140.2-S2	1
1000	PROJECT 1130-64-71 STAGE 2:		
	R/L SB	145.1-S2	1
	R/L SB	145.2-S2	1
	R/L WND	150.1-S2	1
	R/L SB	150.2-S2	1
	R/L SB	150.4-S2	1
	R/L WND	160.1-S2	1
	R/L SB	160.2-S2	1
	R/L WND	170.1-S2	1
	R/L SB	170.2-S2	1
1000	PROJECT 1130-64-71 STAGE 3:		
	R/L SB	220.1-S2	1
	R/L SB	220.2-S2	1
	R/L SB	230.1-S2	1
	R/L SB	230.2-S2	1
	R/L SB	240.1-S2	1
	R/L SB	240.2-S2	1
	R/L SB	250.1-S2	1
	R/L SB	250.2-S2	1
	R/L SB	260.1-S2	1
STAGE 2 SUBTOTALS			28

INLET MARKER

SPV.0060.0270

INLET MARKER

CATEGORY	LOCATION	STRUCTURE	EACH
1000	PROJECT 1130-64-71 STAGE 1:		
	R/L NB	125.3-S3	1
	R/L NB	150.5-S3	1
	STAGE 3 SUBTOTALS		
	PROJECT 1130-64-71 STAGE 1:		
	R/L NB	135.4-S4	1
	R/L NB	145.3-S4	1
	R/L NB	160.3-S4	1
	R/L WNA	160.4-S4	1
	R/L NB	170.3-S4	1
1000	PROJECT 1130-64-71 STAGE 2:		
	R/L WNA	170.4-S4	1
	R/L NB	220.3-S4	1
	R/L NB	220.4-S4	1
	R/L NB	230.4-S4	1
	R/L NB	230.5-S4	1
	R/L NB	240.3-S4	1
	R/L NB	240.4-S4	1
	R/L NB	250.3-S4	1
	R/L NB	250.4-S4	1
1000	PROJECT 1130-64-71 STAGE 3:		
	R/L NB	260.3-S4	1
	R/L NB	260.4-S4	1
	R/L NB	415.1-S4	1
	R/L NB	425.1-S4	1
	R/L WNA	430.3-S4	1
	R/L NB	435.1-S4	1
	R/L WNA	440.1-S4	1
	R/L WNA	450.1-S4	1
	STAGE 4 SUBTOTALS		
PROJECT 1130-64-71 SUBTOTALS			52
PROJECT 1130-64-71 TOTALS			52

Addendum No. 02
ID 1130-64-71
Added Sheet 832A
November 26, 2024

PROJECT	From/To Station	Location	Excavation Common (CY) **		Excavation Marsh (CY)	Roadway Embankment (CY)	Mass Ordinate +/- (5)
			(1)				
			Cut (CY)	EBS (CY)			
1130-64-72			205.0100	(3)	205.0400	SPV.0035.0100	
	569NB+00.00 - 672NB+55.51 - 672NBT+15.07	IH 41 NB STAGE 1	13,352	0	0	3,555	9,797
	569SB+00.00 - 673SB+44.49	IH 41 SB STAGE 2	31,867	0	50	24,046	7,871
	673SBT+44.55 - 678SBT+64.05	IH 41 SB INTERIM STAGE 2	1,691	0	0	315	1,376
	569SB+00.00 - 673SB+44.49	IH 41 SB STAGE 3	7,806	0	0	1,493	6,313
	591SB+50.00 - 601SB+03.00	IH 41 SB STAGE 3 SHOULDER	1,839	0	0	509	1,330
	569NB+00.00 - 672NB+55.51	IH 41 NB STAGE 4	56,300	0	50	19,168	37,182
	672NBT+55.51 - 677NBT+75.00	IH 41 NB INTERIM STAGE 4	1,952	0	0	264	1,688
	569SB+00.00 - 673SB+44.49	IH 41 SB STAGE 5	1,236	0	0	128	1,108
	619NB+92.47 - 658NB+21.92	NB EBS	0	9,899	0	0	9,899
	605SB+11.74 - 660SB+96.69	SB EBS	0	8,075	0	0	8,075
	1599NLA+97.39 - 1604NLA+78.94	RAMP NLA	865	0	0	222	643
	1576NLB+09.24 - 1578NLB+77.48	RAMP NLB	688	0	0	44	644
	1578NLC+03.23 - 1585NLC+00.00	RAMP NLC	2,736	0	0	2,040	696
	1600NLD+25.00 - 1602NLD+70.21	RAMP NLD	266	0	0	2,650	2,384
	0APC+00.00 - 9APC+35.50	POND APC	23,566	0	0	311	23,255
	199CA+40+60 - 207CA+80.28	LYNNDALE CHANNEL	2,613	0	0	164	2,448
	569SB+00.00 - 673SB+44.49	IH 41 SB STAGE 2 DITCH	0	0	0	7,539	-7,539
	569SB+00.00 - 673SB+44.49	IH 41 SB STAGE 3 DITCH	14,942	0	0	1,580	13,362
	2607+97.49 - 2613+15.80 - 613NB+15.80 - 617NB+30.03	SB - 15 RAMP STAGE 2 CROSSOVER	570	0	0	348	222
	2672+64.22 - 2689+40.98	SB STAGE 2 CROSSOVER	1,356	0	0	123	1,233
	569NB+00.00 - 574NB+50.00 - 2574+50.00 - 2583+18.17	NB STH15 RAMP NLB - STAGE 4A CROSSOVER	1,023	0	0	333	690
	2595+70.74 - 2600+66.29	NB - STH15 RAMP NLA STAGE 4B CROSSOVER	160	0	0	906	-746
	2673+44.49 - 2687+44.15	NB STAGE 4 CROSSOVER	1,503	0	0	150	1,353
	10DAB+00.00 - 11DAB+62.30	LYNNDALE DITCH B	292	0	0	0	292
	569NB+00.00 - 672NB+55.51	IH 41 RELIEF TRENCHES	1,352	0	0	0	1,352
Totals			168,000	18,000	100	65,900	120,200
			186,000				

2

2

2

1) Excavation Common = Cut + EBS Excavation. Item number 205.0100.
2) Cut volume includes existing concrete and asphaltic surface material.
3) EBS Excavation to be backfilled with select crushed material unless otherwise noted in the plans. All EBS material is assumed to be wasted offsite.
4) Roadway Embankment = Fill
5) Mass Ordinate = Excavation Common + Excavation Marsh - Fill. The Mass Ordinate is for information purposes only.

**Additional Quantities Shown Elsewhere

- 2
- 1) Excavation Common = Cut + EBS Excavation. Item number 205.0100.
2) Cut volume includes existing concrete and asphaltic surface material.
3) EBS Excavation to be backfilled with select crushed material unless otherwise noted in the plans. All EBS material is assumed to be wasted offsite.
4) Roadway Embankment = Fill
5) Mass Ordinate = Excavation Common + Excavation Marsh - Fill. The Mass Ordinate is for information purposes only.

**Additional Quantities Shown Elsewhere

Addendum No. 02
ID 1130-64-72
Added Sheet 862
November 26, 2024

SPV.0060.0270			STRUCTURE INLET MARKER		
CATEGORY	LOCATION	ID	EACH		

1000	PROJECT 1130-64-72				
	R/L SB	6145-S2	1		
	R/L SB	6146-S2	1		
	R/L SB	6149-S2	1		
	R/L SB	6406-S4	1		
	R/L SB	6407-S3	1		
	R/L SB	6408-S2	1		
	R/L SB	6409-S2	1		
	R/L SB	6411-S2	1		
	R/L SB	6412A-S2	1		
	R/L SB	6412-S2	1		
	R/L SB	6413-S3	1		
	R/L SB	6414-S4	1		
	R/L SB	6421-S2	1		
	R/L SB	6422-S2	1		
	R/L SB	6426-S3	1		
	R/L SB	6427-S3	1		
	R/L SB	6431A-S3	1		
	R/L SB	6432A-S3	1		
	R/L SB	6432-S3	1		
	R/L SB	6433-S3	1		
	R/L SB	6434A-S2	1		
	R/L SB	6434-S3	1		
	R/L SB	6435A-S3	1		
	R/L SB	6435-S3	1		
	R/L SB	6436-S3	1		
	R/L SB	6437-S3	1		
	R/L SB	6438-S2	1		
	R/L SB	6442-S3	1		
	R/L SB	6443-S3	1		
	R/L SB	6444-S3	1		
	R/L SB	6445-S3	1		
	R/L SB	6446-S3	1		
	R/L SB	6481-S3	1		
	R/L SB	6482-S2	1		
	R/L SB	6484-S3	1		
	R/L SB	6485-S2	1		
	R/L SB	6486-S2	1		
	R/L SB	6487-S3	1		
	N/A	6491A-S4	1		
	R/L SB	6491-S3	1		
	R/L SB	6492-S2	1		
	R/L SB	6493A-S4	1		
	R/L SB	6493-S2	1		
	N/A	6494A-S4	1		
	N/A	6494D-S4	1		
	R/L SB	6494-S3	1		
	R/L SB	6495-S2	1		
	R/L SB	6496-S1	1		
	R/L SB	6497-S2	1		

SPV.0060.0270			STRUCTURE INLET MARKER		
CATEGORY	LOCATION	ID	EACH		

1000	PROJECT 1130-64-72				
	R/L SB	6501-S2	1		
	R/L SB	6502-S2	1		
	R/L SB	6503A-S4	1		
	R/L SB	6503-S3	1		
	R/L SB	6505-S2	1		
	R/L SB	6507-S2	1		
	R/L SB	6508A-S4	1		
	R/L SB	6508-S3	1		
	R/L SB	6511-S4	1		
	R/L SB	6512-S4	1		
	R/L SB	6513-S4	1		
	R/L SB	6514-S4	1		
	R/L SB	6515-S2	1		
	R/L SB	6517-S2	1		
	R/L SB	6518-S2	1		
	R/L SB	6520-S2	1		
	R/L SB	6521-S3	1		
	R/L SB	6522-S3	1		
	R/L SB	6523-S3	1		
	R/L SB	6524-S2	1		
	R/L SB	6525-S2	1		
	R/L SB	6536-S4	1		
	R/L SB	6538-S4	1		
	R/L SB	6539-S3	1		
	R/L SB	6540-S2	1		
	R/L SB	6542-S2	1		
	R/L SB	6543-S3	1		
	R/L SB	6544-S2	1		
	R/L SB	6545-S2	1		
	R/L SB	6550-S2	1		
	R/L SB	6552-S4	1		
	R/L SB	6553-S3	1		
	R/L SB	6555-S2	1		
	R/L SB	6556-S2	1		
	R/L SB	6560-S2	1		
	R/L SB	6561-S2	1		
	R/L SB	6562-S4	1		
	R/L SB	6563-S3	1		
	R/L SB	6565-S2	1		
	R/L SB	6566-S4	1		
	R/L SB	6567-S3	1		
	R/L SB	6568-S2	1		
	R/L SB	6570-S2	1		
	R/L SB	6571-S2	1		
	R/L SB	6572-S4	1		
	R/L SB	6573-S3	1		
	R/L SB	6575-S2	1		
	R/L SB	6576-S2	1		
	R/L SB	6577-S4	1		

SPV.0060.0270			STRUCTURE INLET MARKER		
CATEGORY	LOCATION	ID	EACH		

1000	PROJECT 1130-64-72				
	R/L SB	6578-S3	1		
	R/L SB	6579-S2	1		
	R/L SB	6580A-S2	1		
	R/L SB	6581-S2	1		
	R/L SB	6582-S4	1		
	R/L SB	6583-S3	1		
	R/L SB	6585-S2	1		
	R/L SB	6590-S2	1		
	R/L SB	6591-S2	1		
	R/L SB	6592-S4	1		
	R/L SB	6593-S3	1		
	R/L SB	6594-S2	1		
	R/L SB	6595-S2	1		
	R/L SB	6596-S2	1		
	R/L SB	6597-S4	1		
	R/L SB	6598-S3	1		
	R/L SB	6599-S2	1		
	R/L SB	6600-S2	1		
	R/L SB	6601-S2	1		
	R/L SB	6602-S4	1		
	R/L SB	6603-S3	1		
	R/L SB	6605-S2	1		
	R/L SB	6610-S2	1		
	R/L SB	6611-S2	1		
	R/L SB	6612-S4	1		
	R/L SB	6613-S3	1		
	R/L SB	6614-S2	1		
	R/L SB	6615-S2	1		
	R/L SB	6616-S2	1		
	R/L SB	6617-S4	1		
	R/L SB	6618-S3	1		
	R/L SB	6619-S4	1		
	R/L SB	6620-S2	1		
	R/L SB	6625-S2	1		
	R/L SB	6626-S2	1		
	R/L SB	6627-S4	1		
	R/L SB	6628-S3	1		
	R/L SB	6629-S2	1		
	R/L SB	6631-S2	1		
	R/L SB	6632-S4	1		
	R/L SB	6639-S2	1		
	R/L SB	6641-S4	1		
	R/L SB	6646-S2	1		
	R/L SB	6651-S2	1		
	R/L SB	6652-S2	1		
	R/L SB	6654-S2	1		
	R/L SB	6655B-S2	1		
	R/L SB	6655-S2	1		
	R/L SB	6675-S1	1		
	R/L SB	6677-S4	1		

SPV.0060.0270			STRUCTURE INLET MARKER		
CATEGORY	LOCATION	ID	EACH		

1000	PROJECT 1130-64-72				
	R/L SB	6678-S4	1		
	R/L SB	6679-S1	1		
	R/L SB	6682-S2	1		
	R/L SB	6683-S4	1		
	R/L SB	6684-S2	1		
	R/L SB	6687-S4	1		
	R/L SB	EX 6451	1		
	R/L SB	EX 6452	1		
	R/L SB	EX 6453	1		
	R/L SB	EX 6454	1		
	R/L SB	EX 6455	1		
	R/L SB	EX 6458	1		
	R/L SB	EX 6459	1		
	R/L SB	EX 6460	1		
	R/L SB	EX 6461	1		
	R/L SB	EX 6463	1		
	R/L SB	EX 6464	1		
	R/L SB	EX 6465	1		
	R/L SB	EX 6466	1		
	R/L SB	EX 6467	1		
	R/L SB	EX 6470	1		
	R/L SB	EX 6471	1		
	R/L SB	EX 6472	1		
	R/L SB	EX 6476	1		
	R/L SB	EX 6477	1		
	R/L SB	EX 6526	1		
	R/L SB	EX 6527	1		

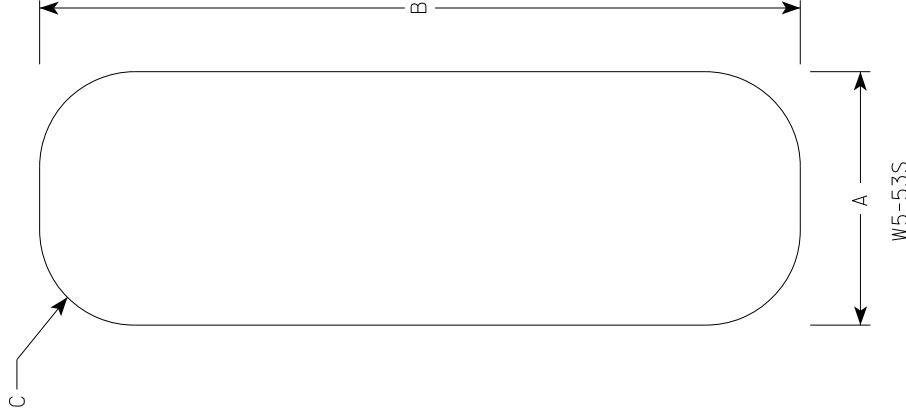
Addendum No. 02
ID 1130-64-72
Added Sheet 950A
November 26, 2024

SPV.0060.0270			STRUCTURE INLET MARKER		
CATEGORY	LOCATION	ID	EACH		

1000	PROJECT 1130-64-72				
	R/L SB	6145-S2	1		
	R/L SB	6146-S2	1		
	R/L SB	6149-S2	1		
	R/L SB	6406-S4	1		
	R/L SB	6407-S3	1		
	R/L SB	6408-S2	1		
	R/L SB	6409-S2	1		
	R/L SB	6411-S2	1		
	R/L SB	6412A-S2	1		
	R/L SB	6412-S2	1		
	R/L SB	6413-S3	1		
	R/L SB	6414-S4	1		
	R/L SB	6421-S2	1		
	R/L SB	6422-S2	1		
	R/L SB	6426-S3	1		
	R/L SB	6427-S3	1		
	R/L SB	6431A-S3	1		
	R/L SB	6432A-S3	1		
	R/L SB	6432-S3	1		
	R/L SB	6433-S3	1		
	R/L SB	6434A-S2	1		
	R/L SB	6434-S3	1		
	R/L SB	6435A-S3	1		
	R/L SB	6435-S3	1		
	R/L SB	6436-S3	1		
	R/L SB	6437-S3	1		
	R/L SB	6438-S2	1		
	R/L SB	6442-S3	1		
	R/L SB	6443-S3	1		
	R/L SB	6444-S3	1		
	R/L SB	6445-S3	1		
	R/L SB	6446-S3	1		
	R/L SB	6481-S3	1		
	R/L SB	6482-S2	1		
	R/L SB	6484-S3	1		
	R/L SB	6485-S2	1		
	R/L SB	6486-S2	1		
	R/L SB	6487-S3	1		
	N/A	6491A-S4	1		
	R/L SB	6491-S3	1		
	R/L SB	6492-S2	1		
	R/L SB	6493A-S4	1		
	R/L SB	6493-S2	1		
	N/A	6494A-S4	1		
	N/A	6494D-S4	1		
	R/L SB	6494-S3	1		
	R/L SB	6495-S2	1		
	R/L SB	6496-S1	1		
	R/L SB	6497-S2	1		

NOTES

1. Sign is Type II -Type H Reflective
2. Color:
Background - Green
3. Base material shall be .040" aluminum.
Corners shall be rounded.



Addendum No. 02
ID 1130-64-71/72
Added Sheet 1315A
November 26, 2024

SIZE	A	B	C	D	E	F	G	H	I	J	K	L	M	N	O	P	Q	R	S	T	U	V	W	X	Y	Z	Area sq. ft.
1																											
2S	4	12	1 1/2																								.33
2M	4	12	1 1/2																								.33
3																											
4																											
5																											

STANDARD SIGN
W5 - 53S

WISCONSIN DEPT OF TRANSPORTATION
APPROVED

Matthew L. Rauch
For State Traffic Engineer

DATE: 8/27/24 PLATE NO: W5-53S.3

PROJECT NO: COUNTY: HWY: SHEET NO: 1315A E

FILE NAME : C:\CAE\files\Projects\tr_std\plate\W553S.dgn PLOT DATE : 27-MAR 2024 3:28 PLOT BY : mscj9n PLOT NAME : PLOT SCALE : ##.....plotscale.....## WISDOT/CADDs SHEET 42

R/L APC - POND APC

R/L APC - POND ARC															
STATION	REAL STATION	DISTANCE	AREA (SF)				INCREMENTAL VOL (CY) (UNADJUSTED)				CUMULATIVE VOL (CY)				
			CUT	FILL	MARSH EXC	EBS	CUT	FILL	MARSH EXC	EBS	CUT	EXPANDED FILL	EXPANDED MARSH BACKFILL	EXPANDED EBS BACKFILL	MASS ORDNATE
0+00.00	0.00	0.00	678.35	18.69	0.00	0.00	0	0	0	0	0	0	0	0	0
0+50.00	50.00	50.00	737.41	27.39	0.00	0.00	1311	43	0	0	1311	43	0	0	1268
1+00.00	100.00	50.00	803.70	36.67	0.00	0.00	1427	59	0	0	2738	102	0	0	2636
1+50.00	150.00	50.00	865.20	48.19	0.00	0.00	1545	79	0	0	4283	181	0	0	4102
2+00.00	200.00	50.00	704.69	0.01	0.00	0.00	1454	45	0	0	5737	226	0	0	5511
2+50.00	250.00	50.00	575.89	0.01	0.00	0.00	1186	0	0	0	6923	226	0	0	6697
3+00.00	300.00	50.00	1054.29	0.00	0.00	0.00	1509	0	0	0	8432	226	0	0	8206
3+50.00	350.00	50.00	968.11	0.47	0.00	0.00	1873	0	0	0	10305	226	0	0	10079
4+00.00	400.00	50.00	886.90	0.65	0.00	0.00	1718	1	0	0	12023	227	0	0	11796
4+50.00	450.00	50.00	782.19	0.01	0.00	0.00	1545	1	0	0	13568	228	0	0	13340
5+00.00	500.00	50.00	700.66	0.00	0.00	0.00	1373	0	0	0	14941	228	0	0	14713
5+50.00	550.00	50.00	642.06	0.00	0.00	0.00	1243	0	0	0	16184	228	0	0	15956
6+00.00	600.00	50.00	570.16	0.00	0.00	0.00	1122	0	0	0	17306	228	0	0	17078
6+50.00	650.00	50.00	486.85	0.00	0.00	0.00	979	0	0	0	18285	228	0	0	18057
7+00.00	700.00	50.00	389.01	0.00	0.00	0.00	811	0	0	0	19096	228	0	0	18868
7+50.00	750.00	50.00	389.80	4.94	0.00	0.00	721	5	0	0	19817	233	0	0	19584
8+00.00	800.00	50.00	483.48	9.20	0.00	0.00	809	13	0	0	20626	246	0	0	20380
8+50.00	850.00	50.00	562.81	12.10	0.00	0.00	969	20	0	0	21595	266	0	0	21329
9+00.00	900.00	50.00	633.69	13.90	0.00	0.00	1108	24	0	0	22703	290	0	0	22413
9+35.50	935.50	35.50	678.35	18.69	0.00	0.00	863	21	0	0	23566	311	0	0	23255
							23566								

2

2

2

2

Addendum No. 02
ID 1130-64-72
Revised Sheet 1630
November 26, 2024



Proposal Schedule of Items

Page 3 of 37

Proposal ID: 20241210014 Project(s): 1130-64-71, 1130-64-72, 1130-64-87

Federal ID(s): WISC 2025135, WISC 2025136, WISC 2025137

SECTION: 0001

Contract Items

Alt Set ID:

Alt Mbr ID:

Proposal Line Number	Item ID Description	Approximate Quantity and Units	Unit Price	Bid Amount
0058	204.0246 Removing Ancillary Structure (structure) 0001. S-44-016	1.000 EACH	_____.	_____.
0060	204.0270 Abandoning Culvert Pipes	1.000 EACH	_____.	_____.
0062	204.9060.S Removing (item description) 0001. Abandoning Monitoring Well	4.000 EACH	_____.	_____.
0064	204.9060.S Removing (item description) 0103. Apron Endwalls	2.000 EACH	_____.	_____.
0066	204.9060.S Removing (item description) 0600. Anchor Bolt Cover Shrouds	3.000 EACH	_____.	_____.
0068	204.9060.S Removing (item description) 0700. Communication Vault	10.000 EACH	_____.	_____.
0070	205.0100 Excavation Common	251,951.000 CY	_____.	_____.
0072	205.0400 Excavation Marsh	100.000 CY	_____.	_____.
0074	206.1001 Excavation for Structures Bridges (structure) 0803. B-44-339	1.000 EACH	_____.	_____.
0076	206.1001 Excavation for Structures Bridges (structure) 0804. B-44-340	1.000 EACH	_____.	_____.
0078	206.2001 Excavation for Structures Culverts (structure) 0801. B-44-0347	1.000 EACH	_____.	_____.
0080	206.2001 Excavation for Structures Culverts (structure) 0802. B-44-0348	1.000 EACH	_____.	_____.
0082	209.0200.S Backfill Controlled Low Strength	13.000 CY	_____.	_____.
0084	209.1100 Backfill Granular Grade 1	150.000 CY	_____.	_____.



Proposal Schedule of Items

Page 17 of 37

Proposal ID: 20241210014 Project(s): 1130-64-71, 1130-64-72, 1130-64-87

Federal ID(s): WISC 2025135, WISC 2025136, WISC 2025137

SECTION: 0001

Contract Items

Alt Set ID:

Alt Mbr ID:

Proposal Line Number	Item ID Description	Approximate Quantity and Units	Unit Price	Bid Amount
0442	611.3225 Inlets 2x2.5-FT	13.000 EACH	_____.	_____.
0444	611.3230 Inlets 2x3-FT	11.000 EACH	_____.	_____.
0446	611.3901 Inlets Median 1 Grate	11.000 EACH	_____.	_____.
0448	611.3902 Inlets Median 2 Grate	8.000 EACH	_____.	_____.
0450	611.8110 Adjusting Manhole Covers	45.000 EACH	_____.	_____.
0452	611.8115 Adjusting Inlet Covers	6.000 EACH	_____.	_____.
0454	611.8120.S Cover Plates Temporary	234.000 EACH	_____.	_____.
0456	611.9710 Salvaged Inlet Covers	2.000 EACH	_____.	_____.
0458	611.9850.S Pipe Grates (size) 0001. 30-Inch	1.000 EACH	_____.	_____.
0460	612.0106 Pipe Underdrain 6-Inch	7,858.000 LF	_____.	_____.
0462	612.0206 Pipe Underdrain Unperforated 6-Inch	60.000 LF	_____.	_____.
0464	612.0406 Pipe Underdrain Wrapped 6-Inch	7,131.000 LF	_____.	_____.
0466	614.0150 Anchor Assemblies for Steel Plate Beam Guard	1.000 EACH	_____.	_____.
0468	614.0397 Guardrail Mow Strip Emulsified Asphalt	387.000 SY	_____.	_____.
0470	614.0800 Crash Cushions Permanent	1.000 EACH	_____.	_____.
0472	614.0905 Crash Cushions Temporary	49.000 EACH	_____.	_____.



Proposal Schedule of Items

Page 30 of 37

Proposal ID: 20241210014 Project(s): 1130-64-71, 1130-64-72, 1130-64-87

Federal ID(s): WISC 2025135, WISC 2025136, WISC 2025137

SECTION: 0001

Contract Items

Alt Set ID:

Alt Mbr ID:

Proposal Line Number	Item ID Description	Approximate Quantity and Units	Unit Price	Bid Amount
0834	715.0603 Incentive Strength Concrete Barrier	26,359.000 DOL	1.00000	26,359.00
0836	715.0715 Incentive Flexural Strength Concrete Pavement	67,905.000 DOL	1.00000	67,905.00
0838	740.0440 Incentive IRI Ride	105,621.000 DOL	1.00000	105,621.00
0840	801.0117 Railroad Flagging Reimbursement	125,300.000 DOL	1.00000	125,300.00
0842	999.1001.S Seismograph (project) 0001. 1130-64-72	1.000 EACH	_____.	_____.
0844	999.1501.S Crack and Damage Survey	14.000 EACH	_____.	_____.
0846	ASP.1T0A On-the-Job Training Apprentice at \$5.00/HR	2,100.000 HRS	5.00000	10,500.00
0848	ASP.1T0G On-the-Job Training Graduate at \$5.00/HR	5,760.000 HRS	5.00000	28,800.00
0850	SPV.0035 Special 0100. Roadway Embankment	127,000.000 CY	_____.	_____.
0852	SPV.0035 Special 0800. HPC Masonry Structures	1,670.000 CY	_____.	_____.
0854	SPV.0060 Special 0100. Baseline CPM Progress Schedule	1.000 EACH	_____.	_____.
0856	SPV.0060 Special 0105. CPM Progress Schedule and Accepted Revisions	17.000 EACH	_____.	_____.
0858	SPV.0060 Special 0110. Construction Staking Survey Project 1130-64-71	1.000 EACH	_____.	_____.
0860	SPV.0060 Special 0115. Construction Staking Survey Project 1130-64-72	1.000 EACH	_____.	_____.



Proposal Schedule of Items

Page 37 of 37

Proposal ID: 20241210014 Project(s): 1130-64-71, 1130-64-72, 1130-64-87

Federal ID(s): WISC 2025135, WISC 2025136, WISC 2025137

SECTION: 0001

Contract Items

Alt Set ID:

Alt Mbr ID:

Proposal Line Number	Item ID Description	Approximate Quantity and Units	Unit Price	Bid Amount
1020	SPV.0180 Special 0100. Concrete Pavement 10 1/2-Inch Special	207,860.000 SY	_____.	_____.
1022	SPV.0180 Special 0200. Topsoil Filled Riprap	977.000 SY	_____.	_____.
1024	SPV.0195 Special 0105. Load Transfer Platform	6,462.000 TON	_____.	_____.
1026	SPV.0060 Special 0270. Inlet Marker	229.000 EACH	_____.	_____.
Section: 0001			Total:	_____.
			Total Bid:	_____.

