



Wisconsin Department of Transportation

December 6, 2024

Division of Transportation Systems Development

Bureau of Project Development
4822 Madison Yards Way, 4th Floor South
Madison, WI 53705

Telephone: (608) 266-1631
Facsimile (FAX): (608) 266-8459

NOTICE TO ALL CONTRACTORS:

Proposal #11: 2120-18-70, WISC 2025100
Hales Corners - Milwaukee
USH 45 to 45th Street
STH 24
Milwaukee County

2160-07-73, WISC 2025101
C Greenfield, S 76th Street
Bridge Over STH 24 B-40-0164
CTH U
Milwaukee County

Letting of December 10, 2024

This is Addendum No. 04, which provides for the following:

Special Provisions:

Added Special Provisions	
Article No.	Description
112	Double Sided Thrie Beam Transition
113	Sawing Curb Head

Schedule of Items:

Revised Bid Item Quantities 2120-18-70					
Bid Item	Item Description	Unit	Proposal Total Prior to Addendum	Quantity Added	Proposal Total After Addendum
614.2300	MGS Guardrail 3	LF	1,875	613	2,488

Added Bid Item Quantities 2120-18-70					
Bid Item	Item Description	Unit	Proposal Total Prior to Addendum	Quantity Added	Proposal Total After Addendum
SPV.0090.03	Double Sided Thrie Beam Transition	LF	0	123	123
SPV.0090.04	Sawing Curb Head	LF	0	690	690

Plan Sheets:

Revised Plan Sheets 2120-18-70	
Plan Sheet	Plan Sheet Title (brief description of changes to sheet)
169-174	Plan Details – updated beam guard to include thrie beam transitions connecting to the crash cushions.
584	Miscellaneous Quantities – Revised “Beam Guard” table.

Added Plan Sheets 2120-18-70	
Plan Sheet	Plan Sheet Title (brief description of changes to sheet)
21A-21D	Construction details for the double sided thrie beam transition.

The responsibility for notifying potential subcontractors and suppliers of these changes remains with the prime contractor.

Sincerely,

Mike Coleman

Proposal Development Specialist
Proposal Management Section

ADDENDUM NO. 04
2120-18-70/2160-07-73
December 6, 2024

Special Provisions

112. Double Sided Thrie Beam Transition, Item SPV.0090.03.

A Description

This special provision describes constructing Double Sided Thrie Beam Transition. Perform this work according to the pertinent requirements of standard spec 614 and conform to the construction detail shown in the plans.

B Materials

Furnish materials according to the pertinent requirements of standard spec 614.

C Construction

Construction shall be according to standard spec 614 and as shown in the Construction Details.

D Measurement

The department will measure Double Sided Thrie Beam Transition by the linear foot acceptably completed, measured along the face of the rail element.

E Payment

The department will pay for measured quantities at the contract unit price under the following bid item:

ITEM NUMBER	DESCRIPTION	UNIT
SPV.0090.03	Double Sided Thrie Beam Transition	LF

Payment is full compensation for providing transitions; to verify embedment depth; for offset block-mounted reflectors; for repairing damaged galvanization; and for excavating and backfilling.

113. Sawing Curb Head, Item SPV.0090.04.

A Description

This special provision describes sawing curb head to a 1.5-inch curb head height and as hereinafter provided.

B (Vacant)

C Construction

Saw curb head according to the applicable portions of standard spec 690. Remove leftover concrete curb head material debris according to the applicable portions of standard spec 204.

D Measurement

The department will measure Sawing Curb Head by the linear foot acceptably completed.

E Payment

The department will pay for measured quantities at the contract unit price under the following bid item:

ITEM NUMBER	DESCRIPTION	UNIT
SPV.0090.04	Sawing Curb Head	LF

Payment is full compensation for providing all sawing and sludge removal; and for disposal of leftover concrete curb head material debris.

Schedule of Items

Attached, dated December 6, 2024, are the revised Schedule of Items Pages 7 and 23.

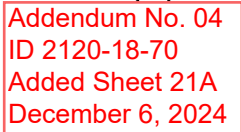
Plan Sheets

The following 8½ x 11-inch sheets are attached and made part of the plans for this proposal:

Revised: 169-174, 584.

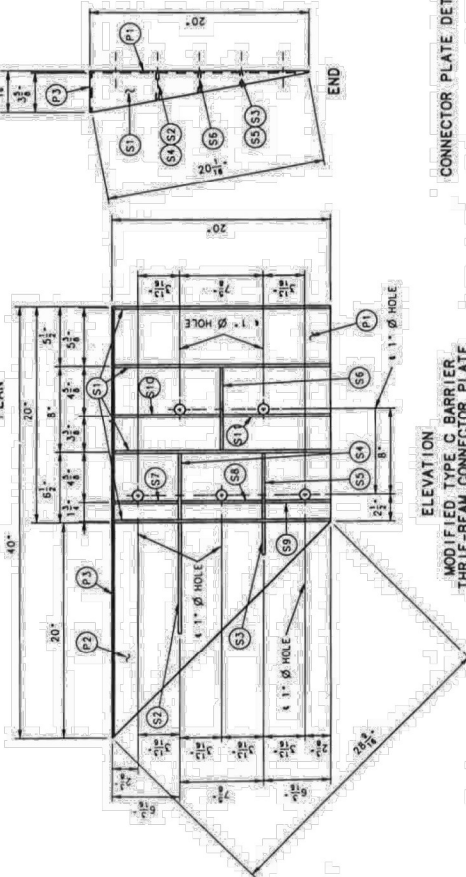
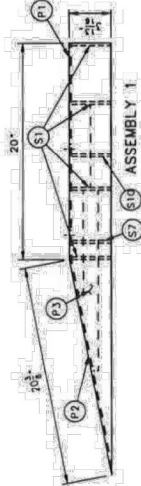
Added: 21A-21D.

END OF ADDENDUM

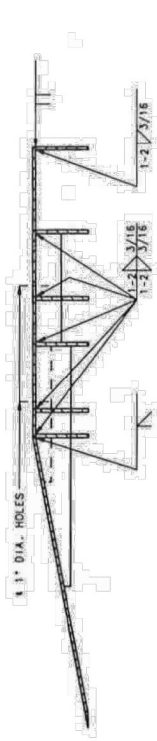


CONNECTOR PLATE DIMENSIONS (PER ASSEMBLY)			
PLATE MARK	QTY.	SHAPE	SIZE (A X B X C X D) THK.
P1	1	8" A	20" X 20" 1/8"
P2	1	8" B	20" X 20" X 28 1/8" 1/8"
P3	1	8" C	40" X 3 1/2" X 20" X 20 3/8" 3/16"
S1	4	8" D	19 1/2" X 3 1/2" X 20 1/8" 1/4"
S2	3	8" E	10 1/4" X 2 7/8" X 10 3/4" X 1 1/2" 1/4"
S3	1	8" F	3" X 1 1/8" X 3 1/2" X 1/2" 1/4"
S4	1	8" G	6 1/2" X 2 1/8" 1/4"
S5	1	8" H	6 1/2" X 1 1/8" 1/4"
S6	1	8" I	7 3/4" X 1 1/2" 1/4"
S7	1	8" J	2 1/2" X 6" X 3 1/2" X 5 1/2" 1/4"
S8	1	8" K	1 3/4" X 7 1/2" X 2 1/2" X 7 1/2" 1/4"
S9	1	8" L	6 1/4" X 5 3/8" X 1 1/2" 1/4"
S10	1	8" M	1 7/8" X 9 1/2" X 3 1/2" X 9 11/16" 1/4"
S11	1	8" N	9 1/2" X 10" X 1 1/2" 1/4"

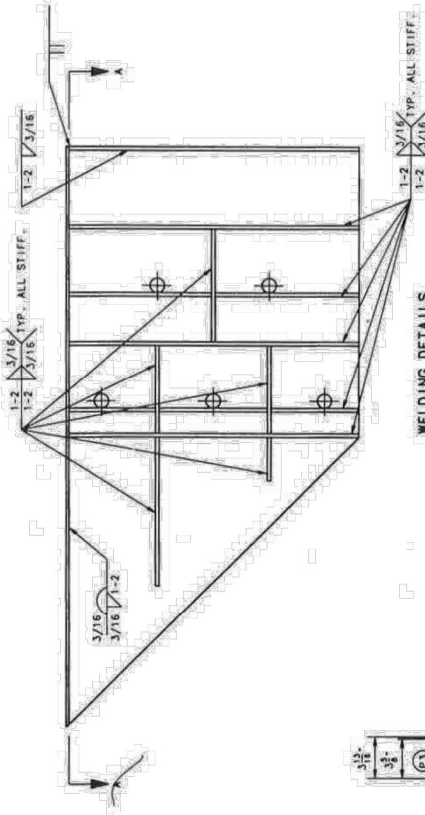
P = COVER PLATE
S = STIFFENER PLATE



MODIFIED TYPE C BARRIER
THRIE-BEAM CONNECTOR PLATE



SECTION A-A

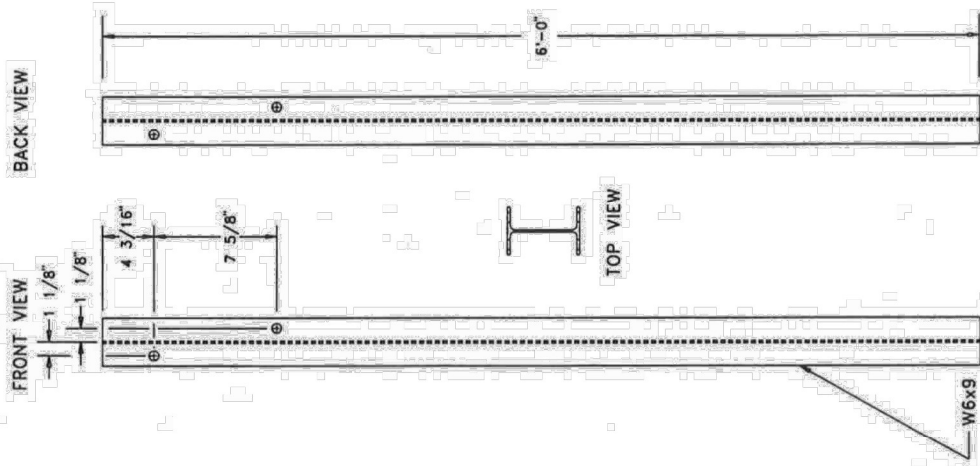


WELDING DETAILS

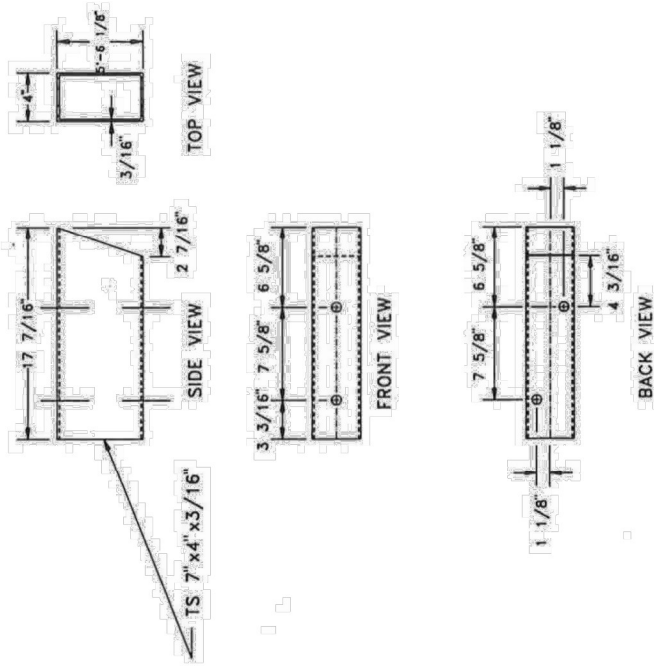
- NOTES:
1. MATERIAL FOR P1, P2, P3 PLATES SHALL BE FABRICATED OF 3/16" THICK A36 GRADE STRUCTURAL STEEL.
 2. COVER PLATES SHALL BE GALVANIZED IN ACCORDANCE WITH AISC D10.1.
 3. STIFFENER PLATES SHALL BE FABRICATED OF 1/4" THICK A36 GRADE STRUCTURAL STEEL.

- WELDING INSTRUCTIONS:
- (A) P1 PLATE SHALL BE WELDED AS FOLLOWS:
1. 3/16" FULL PENETRATION GROOVE WELD TO THE TOP OF THE THRIE-BEAM.
2. 3/16" FULL PENETRATION GROOVE WELD TO THE BOTTOM OF THE THRIE-BEAM.
3. 3/16" FULL PENETRATION GROOVE WELD TO THE INSIDE OF THE THRIE-BEAM.
4. 3/16" FULL PENETRATION GROOVE WELD TO THE OUTSIDE OF THE THRIE-BEAM.
5. 3/16" FULL PENETRATION GROOVE WELD TO THE INSIDE OF THE THRIE-BEAM.
6. 3/16" FULL PENETRATION GROOVE WELD TO THE OUTSIDE OF THE THRIE-BEAM.
- (B) STIFFENERS LOCATED ON THE INSIDE OF THE THRIE-BEAM SHALL BE WELDED AS FOLLOWS:
1. 3/16" FULL PENETRATION GROOVE WELD TO THE INSIDE OF THE THRIE-BEAM.
2. 3/16" FULL PENETRATION GROOVE WELD TO THE OUTSIDE OF THE THRIE-BEAM.
- (C) P2 AND P3 COVER PLATES SHALL BE WELDED TOGETHER WITH FULL PENETRATION GROOVE WELD.

THRIE BEAM POSTS (Median Use)



THRIE BEAM SPACERS



NOTES:

- (1) Steel for structural tube spacer blocks shall meet ASTM A500 Grade B.
- (2) Steel for wide-flange shall meet ASTM A36.
- (3) Galvanized
- (4) All holes drilled or punched to 13/16" diameter.

Addendum No. 04
ID 2120-18-70
Added Sheet 21C
December 6, 2024

PROJECT NO: 2120-18-70

HWY: STH 24

COUNTY: MILWAUKEE

CONSTRUCTION DETAIL - DOUBLE SIDED THRIE BEAM TRANSITION

SHEET 21C

E

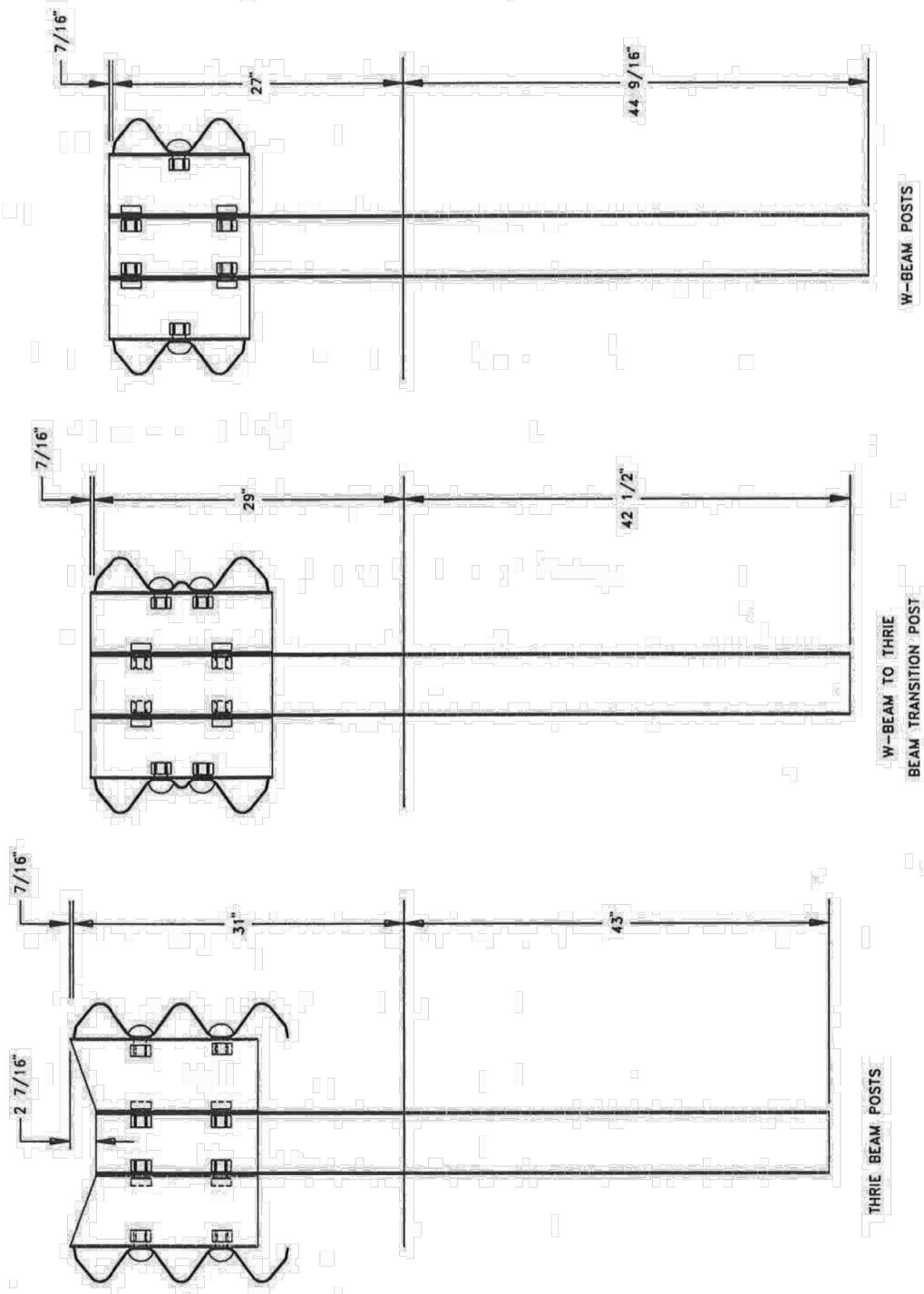
FILE NAME: N:\PDS\CD\21201870\02\001\CD.DWG
LAYOUT NAME: 09

PLOT DATE: 12/5/2024 7:21 PM

PLOT BY: JOHANSEN, AMANDA A

PLOT SCALE: 1 IN=10 FT

WISDOT/CADDIS SHEET 42



Addendum No. 04
ID 2120-18-70
Added Sheet 21D
December 6, 2024

PROJECT NO: 2120-18-70	HWY: STH 24	COUNTY: MILWAUKEE	CONSTRUCTION DETAIL - DOUBLE SIDED THRE BEAM TRANSITION	SHEET 21D	E
FILE NAME: N:\PDS\3D\21201800\SHEETSPAN\021001_CD.DWG	LAYOUT NAME: 10	PLOT DATE: 12/5/2024 7:28 PM	PLOT BY: JOHANSEN, AMANDA A	PLOT SCALE: 1 IN=10 FT	WISDOT/CADDIS SHEET 42

No. 04
3-70
Sheet 169
6, 2024

PLAN DETAILS LEGEND

- (A) MILL AND OVERLAY:
HMA PAVEMENT 5 MT 58-28 H, 1 1/2-INCH OVER
HMA PAVEMENT 3 MT 58-28 S, 2 1/2-INCH
- (MGS) MGS GUARDRAIL 3
- (EAT) MGS GUARDRAIL TERMINAL EAT
- (THIRIE) MGS THRIE BEAM TRANSITION
- (CCPLM) CRASH CUSHIONS PERMANENT LOW MAINTENANCE
- (MOW) GUARDRAIL MOW STRIP EMULSIFIED ASPHALT
- (EG-MD) CONCRETE CURB & GUTTER 31-INCH, MODIFIED
- (OTHR) DOUBLE SIDED THRIE BEAM TRANSITION

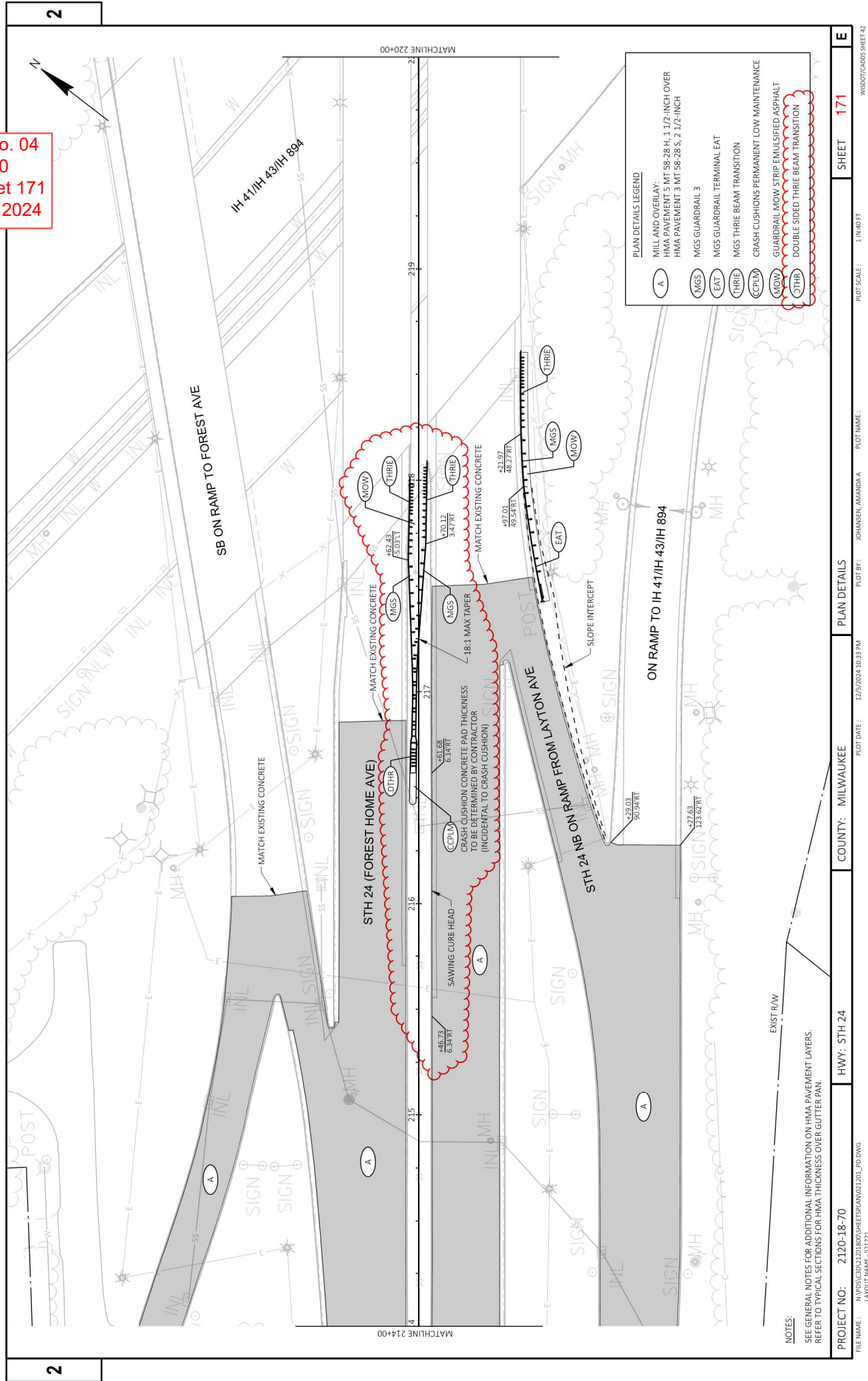
NOTES:
SEE GENERAL NOTES FOR ADDITIONAL INFORMATION ON HMA PAVEMENT LAYERS.
REFER TO TYPICAL SECTIONS FOR HMA THICKNESS OVER GUTTER PAN.

NOTES:

SEE GENERAL NOTES FOR ADDITIONAL INFORMATION ON HMA PAVEMENT LAYERS. REFER TO TYPICAL SECTIONS FOR HMA THICKNESS OVER GUTTER PAN.

PLAN DETAILS LEGEND	<p>MILL AND OVERLAY: HMA PAVEMENT 5 MT 58-28 H, 1 1/2-INCH OVER HMA PAVEMENT 3 MT 58-28 S, 2 1/2-INCH</p> <p>MGS GUARDRAIL 3</p> <p>MGS GUARDRAIL TERMINAL EAT</p> <p>MGS THREE BEAM TRANSITION</p> <p>CRASH CUSHIONS PERMANENT LOW MAINTENANCE</p> <p>GUARDRAIL MOW STRIP EMULSIFIED ASPHALT</p> <p>CONCRETE CURB & GUTTER 31-INCH, MODIFIED</p> <p>DOUBLE SIDED THREE BEAM TRANSITION</p>
A	<p>MGS</p> <p>EAT</p> <p>THREE</p> <p>CCP/LM</p> <p>MOW</p> <p>EG-MB</p> <p>OTHR</p>

Addendum No. 04
ID 2120-18-70
Revised Sheet 171
December 6, 2024



NOTES:

SEE GENERAL NOTES FOR ADDITIONAL INFORMATION ON HMA PAVEMENT LAYERS.
REFER TO TYPICAL SECTIONS FOR HMA THICKNESS OVER GUTTER PAN.

PROJECT NO: 2120-18-70

HWY: STH 24

COUNTY: MILWAUKEE

PLAN DETAILS

PLOT BY: JOHANSEN, AMANDA A

PLOT SCALE: 1 IN=40 FT

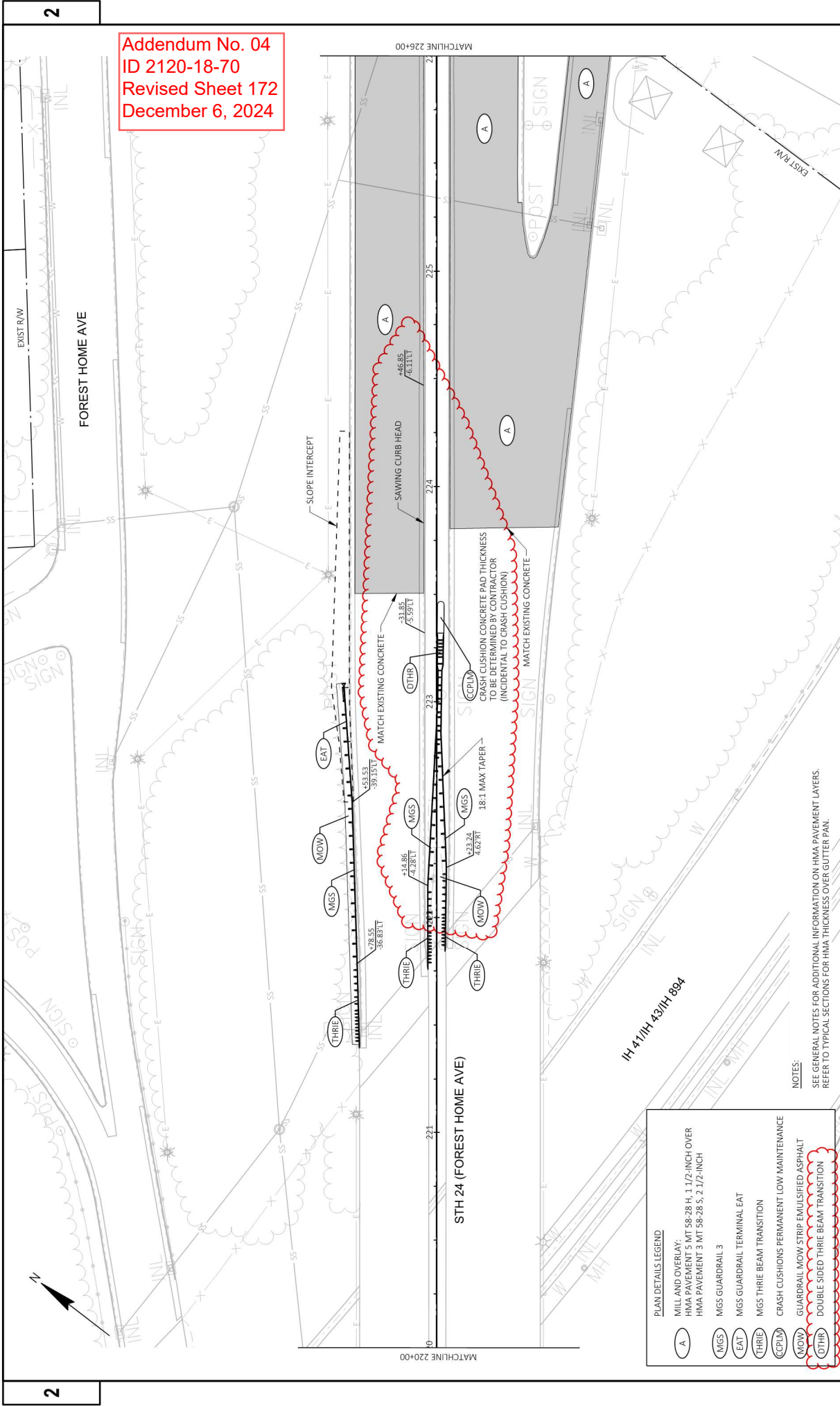
SHEET 171

E

FILE NAME: N:\PDS\303\21201800\SHEETS\PLAN\0221201_PD.DWG

LAYOUT NAME: 101221

WISDOT/CADDS SHEET 42



Addendum No. 04
ID 2120-18-70
Revised Sheet 172
December 6, 2024

PLAN DETAILS LEGEND

- (A) MILL AND OVERLAY:
HMA PAVEMENT 3 MT 58-28 H, 1 1/2 INCH OVER
HMA PAVEMENT 3 MT 58-28 S, 2 1/2 INCH
- (MGS) MGS GUARDRAIL 3
- (EAT) MGS GUARDRAIL TERMINAL EAT
- (THRIE) MGS THRIE BEAM TRANSITION
- (CCPLM) CRASH CUSHIONS PERMANENT LOW MAINTENANCE
- (MOW) GUARDRAIL MOW STRIP ENULSIFIED ASPHALT
- (OTHR) DOUBLE SIDED THRIE BEAM TRANSITION

NOTES:
SEE GENERAL NOTES FOR ADDITIONAL INFORMATION ON HMA PAVEMENT LAYERS.
REFER TO TYPICAL SECTIONS FOR HMA THICKNESS OVER GUTTER PAN.







Proposal Schedule of Items

Page 7 of 23

Proposal ID: 20241210011 Project(s): 2120-18-70, 2160-07-73

Federal ID(s): WISC 2025100, WISC 2025101

SECTION: 0001

Contract Items

Alt Set ID:

Alt Mbr ID:

Proposal Line Number	Item ID Description	Approximate Quantity and Units	Unit Price	Bid Amount
0172	611.0606 Inlet Covers Type B	3.000 EACH	_____.	_____.
0174	611.0651 Inlet Covers Type S	6.000 EACH	_____.	_____.
0176	611.2005 Manholes 5-FT Diameter	2.000 EACH	_____.	_____.
0178	611.2009 Manholes 9-FT Diameter	1.000 EACH	_____.	_____.
0180	611.3003 Inlets 3-FT Diameter	23.000 EACH	_____.	_____.
0182	611.3004 Inlets 4-FT Diameter	1.000 EACH	_____.	_____.
0184	611.8110 Adjusting Manhole Covers	32.000 EACH	_____.	_____.
0186	611.8115 Adjusting Inlet Covers	105.000 EACH	_____.	_____.
0188	611.8120.S Cover Plates Temporary	37.000 EACH	_____.	_____.
0190	611.9710 Salvaged Inlet Covers	22.000 EACH	_____.	_____.
0192	614.0397 Guardrail Mow Strip Emulsified Asphalt	464.000 SY	_____.	_____.
0194	614.0805 Crash Cushions Permanent Low Maintenance	6.000 EACH	_____.	_____.
0196	614.2300 MGS Guardrail 3	2,488.000 LF	_____.	_____.
0198	614.2500 MGS Thrie Beam Transition	394.000 LF	_____.	_____.
0200	614.2610 MGS Guardrail Terminal EAT	8.000 EACH	_____.	_____.



Proposal Schedule of Items

Page 23 of 23

Proposal ID: 20241210011 Project(s): 2120-18-70, 2160-07-73

Federal ID(s): WISC 2025100, WISC 2025101

SECTION: 0001

Contract Items

Alt Set ID:

Alt Mbr ID:

Proposal Line Number	Item ID Description	Approximate Quantity and Units	Unit Price	Bid Amount
0628	SPV.0090 Special 41. Strip Seal Gland Replacement	74.000 LF	_____.	_____.
0630	SPV.0090 Special 90. Cable Type 1#6 AWG 5kV	6,850.000 LF	_____.	_____.
0632	SPV.0090 Special 91. Electrical Cable Type 3#6 AL Triplex	7,100.000 LF	_____.	_____.
0634	SPV.0090 Special 92. Electrical Cable Type 2#2/1#4 AL Triplex	2,975.000 LF	_____.	_____.
0636	SPV.0165 Special 40. Modular Block Wall Repair	257.000 SF	_____.	_____.
0638	SPV.0165 Special 41. Fiber Wrap Reinforcing Non-Structural	707.000 SF	_____.	_____.
0640	SPV.0165 Special 42. Repainting Decorative Steel Railing	25.000 SF	_____.	_____.
0642	SPV.0180 Special 40. Methacrylate Flood Seal	313.000 SY	_____.	_____.
0644	SPV.0195 Special 01. Management of Solid Waste	10.700 TON	_____.	_____.
0646	SPV.0195 Special 02. Joint and Crack Repair	63.000 TON	_____.	_____.
0648	465.0110 Asphaltic Surface Patching	100.000 TON	_____.	_____.
0650	SPV.0090 Special 03. Double Sided Thrie Beam Transition	123.000 LF	_____.	_____.
0652	SPV.0090 Special 04. Sawing Curb Head	690.000 LF	_____.	_____.

Section: 0001

Total:

Total Bid:

