



## Wisconsin Department of Transportation

---

October 31, 2024

**Division of Transportation Systems  
Development**

Bureau of Project Development  
4822 Madison Yards Way, 4<sup>th</sup> Floor South  
Madison, WI 53705

Telephone: (608) 266-1631  
Facsimile (FAX): (608) 266-8459

### NOTICE TO ALL CONTRACTORS:

**Proposal #55: 8949-00-76, WISC 2025066**  
**Baldwin - Menomonie**  
**IH 94 to STH 25 N**  
**USH 12**  
**Dunn County**

**8949-00-77, WISC 2025067**  
**C Menomonie, USH 12/Pine Ave E**  
**STH 25 Intersection**  
**USH 12**  
**Dunn County**

### Letting of November 12, 2024

This is Addendum No. 01, which provides for the following:

#### Plan Sheets:

Revised Plan Sheets	
Plan Sheet	Plan Sheet Title (brief description of changes to sheet)
15-16	Revised with additional points to give more detail.
29	Replaced with correct Paving Detail sheet.

The responsibility for notifying potential subcontractors and suppliers of these changes remains with the prime contractor.

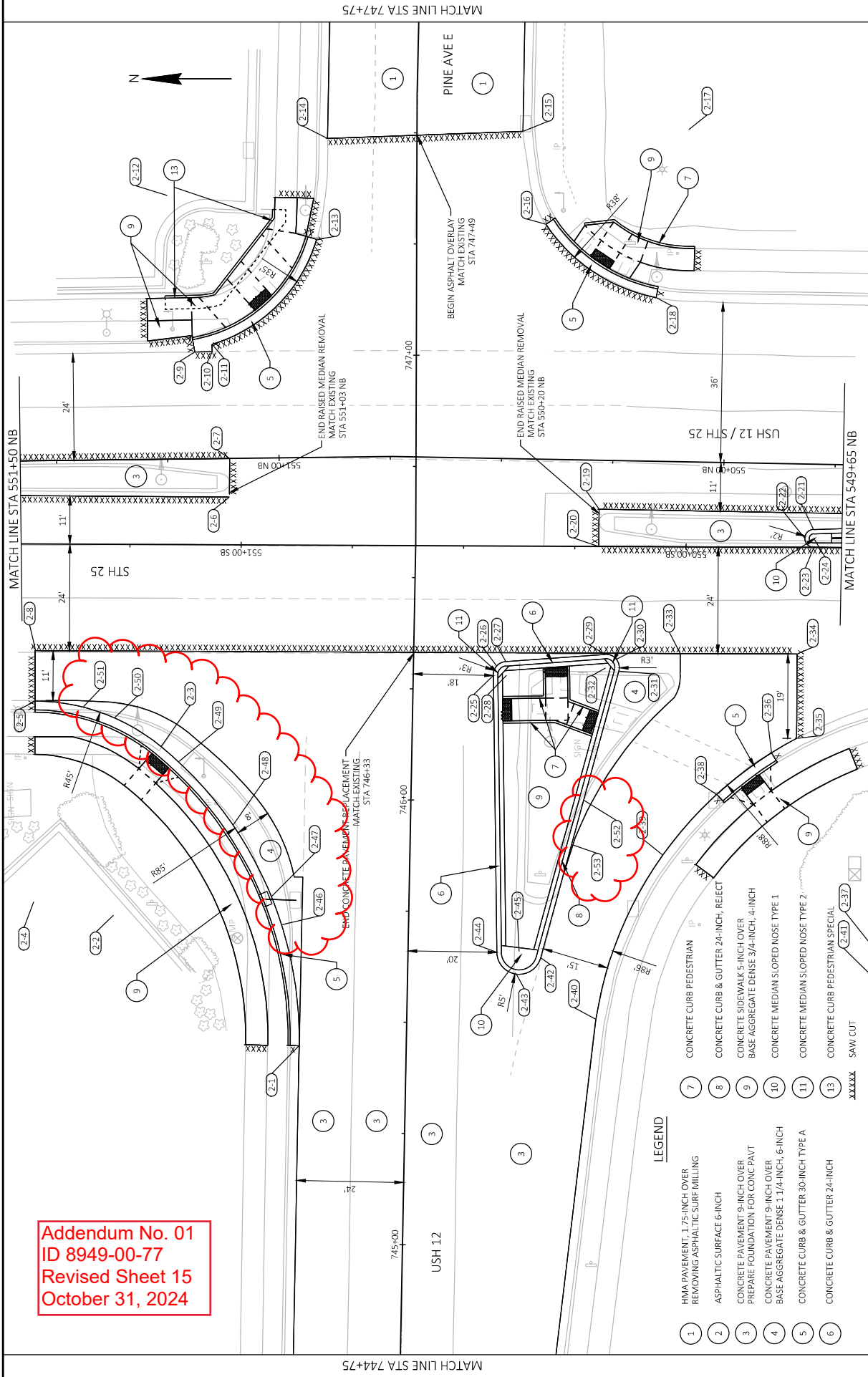
Sincerely,

*Mike Coleman*

Proposal Development Specialist  
Proposal Management Section

END OF ADDENDUM

Addendum No. 01  
ID 8949-00-77  
Revised Sheet 15  
October 31, 2024



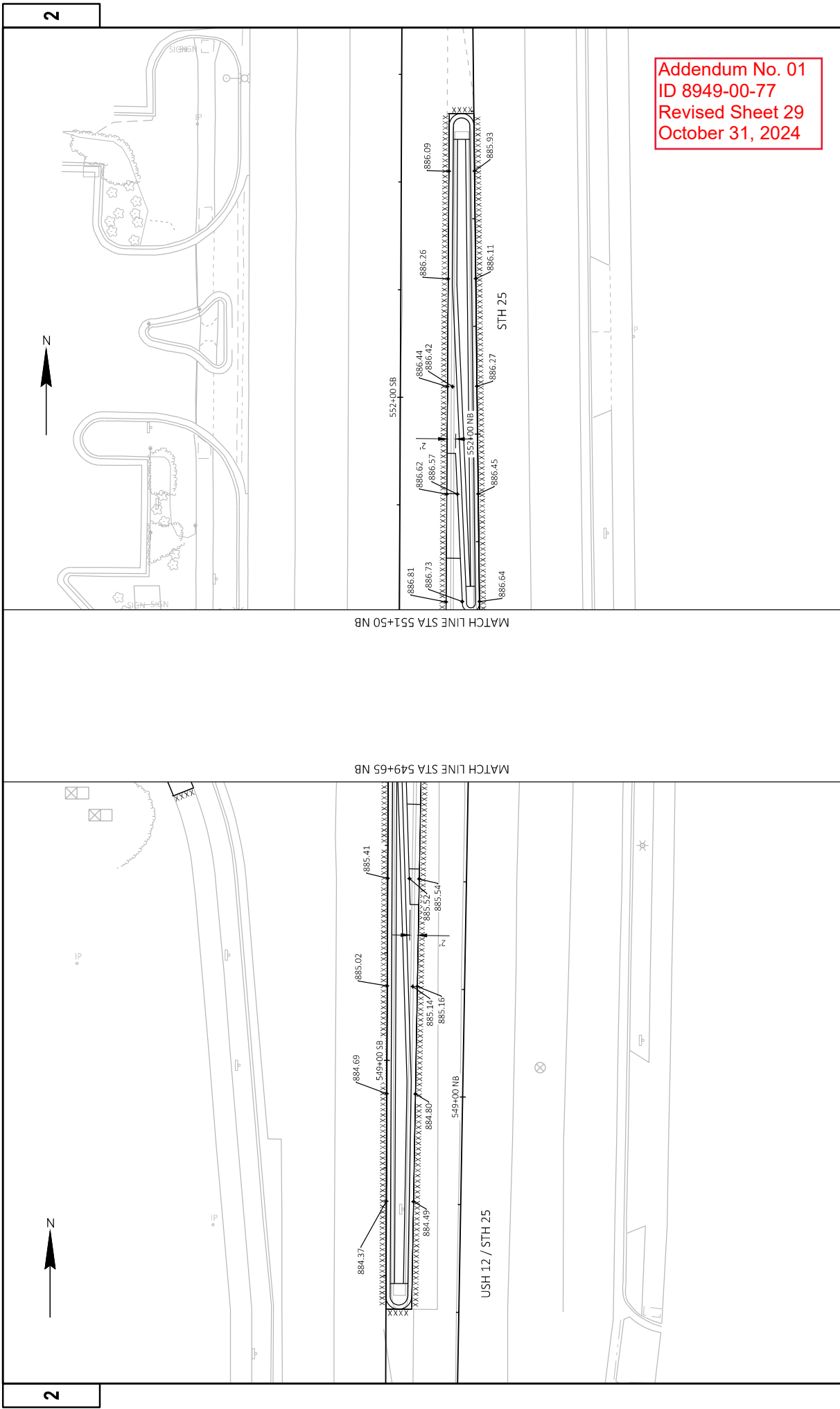
LEGEND

- |        |   |
|--------|---|
| 1      | HMA PAVEMENT, 1.75-INCH OVER REMOVING ASPHALTIC SURF MILLING          |
| 2      | ASPHALTIC SURFACE 6-INCH  |
| 3      | CONCRETE PAVEMENT 9-INCH OVER PREPARE FOUNDATION FOR CONC PAVT        |
| 4      | CONCRETE PAVEMENT 9-INCH OVER BASE AGGREGATE DENSE 1 1/4-INCH, 6-INCH |
| 5      | CONCRETE CURB & GUTTER 30-INCH TYPE A                                 |
| 6      | CONCRETE CURB & GUTTER 24-INCH  |
| 7      | CONCRETE CURB PEDESTRIAN  |
| 8      | CONCRETE CURB & GUTTER 24-INCH, REJECT                                |
| 9      | CONCRETE SIDEWALK 5-INCH OVER BASE AGGREGATE DENSE 3/4-INCH, 4-INCH   |
| 10     | CONCRETE MEDIAN SLOPED NOSE TYPE 1                                    |
| 11     | CONCRETE MEDIAN SLOPED NOSE TYPE 2                                    |
| 13     | CONCRETE CURB PEDESTRIAN SPECIAL                                      |
| xxxxxx | SAW CUT   |

Addendum No. 01  
ID 8949-00-77  
Revised Sheet 16  
October 31, 2024

POINT REFERENCE TABLE				
POINT NUMBER	STATION	OFFSET	ELEVATION	DESCRIPTION
2-1	745+44.29	24.08' LT	886.03	BEGIN C&G
2-2	745+72.89	66.25' LT	---	CENTER 85' RADIUS
2-3	746+10.94	56.38' LT	886.38	CURVE TRANSITION
2-4	745+75.64	84.28' LT	---	CENTER 45' RADIUS
2-5	746+20.63	84.85' LT	886.35	END C&G
2-6	746+67.99	41.93' LT	887.06	PAVT EDGE
2-7	746+76.67	41.89' LT	886.85	PAVT EDGE
2-8	746+31.94	84.99' LT	886.53	PAVT EDGE
2-9	747+00.58	49.83' LT	886.35	BEGIN C&G
2-10	747+00.65	45.89' LT	886.37	---
2-11	747+02.30	45.93' LT	886.38	---
2-12	747+35.69	55.97' LT	---	CENTER 35' RADIUS
2-13	747+25.98	22.49' LT	886.13	END C&G
2-14	747+48.66	20.13' LT	886.26	PAVT EDGE
2-15	747+50.41	23.84' RT	885.64	PAVT EDGE
2-16	747+29.53	29.04' RT	885.84	BEGIN C&G
2-17	747+50.85	61.02' RT	---	CENTER 38' RADIUS
2-18	747+13.09	53.87' RT	885.83	END C&G
2-19	746+65.50	41.17' RT	886.67	PAVT EDGE
2-20	746+57.72	41.13' RT	886.65	PAVT EDGE
2-21	746+61.07	89.38' RT	886.01	CURVE BEGIN
2-22	746+59.04	87.45' RT	886.02	CURVE MIDDLE
2-23	746+57.72	89.45' RT	885.95	CURVE END
2-24	746+59.07	89.45' RT	---	CENTER 1' RADIUS
2-25	746+28.34	18.00' RT	886.50	CURVE BEGIN
2-26	746+30.47	18.73' RT	886.52	CURVE MIDDLE
2-27	746+31.49	20.72' RT	886.50	CURVE END

POINT REFERENCE TABLE				
POINT NUMBER	STATION	OFFSET	ELEVATION	DESCRIPTION
2-28	746+28.51	21.00' RT	---	CENTER 3' RADIUS
2-29	746+33.54	42.99' RT	886.20	CURVE BEGIN
2-30	746+32.51	45.54' RT	886.16	CURVE MIDDLE
2-31	746+29.82	46.17' RT	886.13	CURVE END
2-32	746+30.56	43.26' RT	---	CENTER 3' RADIUS
2-33	746+34.08	59.89' RT	886.03	---
2-34	746+34.47	86.13' RT	885.57	PAVT EDGE
2-35	746+15.49	86.41' RT	884.90	PAVT EDGE/CURVE BEGIN
2-36	746+12.15	80.81' RT	884.87	BEGIN C&G
2-37	745+39.03	129.01' RT	---	CENTER 88' RADIUS
2-38	746+02.55	68.72' RT	884.70	END C&G
2-39	745+88.71	56.83' RT	884.92	CURVE MIDDLE
2-40	745+51.48	42.50' RT	885.37	CURVE END
2-41	745+40.01	127.84' RT	---	CENTER 86' RADIUS
2-42	745+65.06	29.84' RT	885.87	CURVE BEGIN
2-43	745+61.30	24.45' RT	886.03	CURVE MIDDLE
2-44	745+66.13	19.99' RT	886.15	CURVE END
2-45	745+66.28	24.99' RT	---	CENTER 5' RADIUS
2-46	745+71.41	28.54' LT	885.87	---
2-47	745+77.65	30.92' LT	885.85	---
2-48	745+93.59	39.87' LT	886.00	---
2-49	746+07.58	52.38' LT	886.31	---
2-50	746+17.17	66.96' LT	886.45	---
2-51	746+19.46	74.05' LT	886.43	---
2-52	746+00.71	38.83' RT	885.75	---
2-53	745+90.68	36.30' RT	885.71	---



PROJECT NO: 8949-00-77		HWY: USH 12	COUNTY: DUNN	PAVING DETAILS - STH 25		SHEET 29	E
FILE NAME: G:\WOODNW\21030-011 STH 25 & PINE AVENUE (MO-11)\CIVIL 30\SHEETPLAN\02103_PV_25.DWG		PLOT DATE: 10/25/2024 12:26 PM		PLOT BY: BRIAN ST. VINCENT		PLOT SCALE: 1 IN=20 FT	
LAYOUT NAME: Pbn 1 IN 40 FT (2)						W65007CADD5 SHEET 42	