



Wisconsin Department of Transportation

August 20, 2024

Division of Transportation Systems Development

Bureau of Project Development
4822 Madison Yards Way, 4th Floor South
Madison, WI 53705

Telephone: (608) 266-1631

Facsimile (FAX): (608) 266-8459

NOTICE TO ALL CONTRACTORS:

Proposal #10: 3742-02-71
SER Tree Clearing Project
Various SER Counties
Various Highways
Southeast Region Wide

Letting of September 10, 2024

This is Addendum No. 01, which provides for the following:

Special Provisions:

Revised Special Provisions	
Article No.	Description
8	Utilities
18	Notice to Contractor – Milwaukee County Parks Permit

Plan Sheets:

Revised Plan Sheets	
Plan Sheet	Plan Sheet Title (brief description of changes to sheet)
47	Removal Plans – Site 10 (removed clearing areas within some TLE)
48	Removal Plans – Site 10 (removed clearing areas within some TLE)
49	Removal Plans – Site 10 (removed clearing areas within some TLE)
51	Removal Plans – Site 10 (removed clearing areas within some TLE)
62	Removal Plans – Site 30 (increased distance of clearing in new Right-of-Way)

Deleted Plan Sheets	
Plan Sheet	Plan Sheet Title (brief description of why sheet was deleted)
43-46	Removal Plans – Site 7 (site not to be included in initial work order)

The responsibility for notifying potential subcontractors and suppliers of these changes remains with the prime contractor.

Sincerely,

Mike Coleman

Proposal Development Specialist
Proposal Management Section

ADDENDUM NO. 01

3742-02-71

August 20, 2024

Special Provisions

8. Utilities.

*Replace entire section titled **Sites 4 and 5** with the following:*

Sites 4 and 5

The following utility companies have facilities within the limits of this site; however, no adjustments are anticipated:

AT&T Local Network – Communications

AT&T Wisconsin – Communications

City of Milwaukee – Conduit

City of Milwaukee – Sewer

City of Milwaukee – Water

City of Wauwatosa – Sewer

Level 3 Communications LLC – Communications

Midwest Fiber Networks LLC– Communications

Milwaukee Metropolitan Sewerage District (MMSD) - Sewer

Spectrum – Communications

Sprint Communications Co LP – Communications

Wauwatosa Water Utility - Water

We Energies – Electric

We Energies – Gas

*Replace entire section titled **Site 6** with the following:*

Site 6

The following utility companies have facilities within the limits of this site; however, no adjustments are anticipated:

AT&T Wisconsin – Communications

ATC Management Inc – Electric Transmission

CenturyLink Communications LLC – Communications

City of Glendale – Sewer

City of Glendale – Water

Midwest Fiber Networks LLC – Communications

Milwaukee Metropolitan Sewerage District (MMSD) – Sewer

North Shore Water Commission - Water

Spectrum – Communications

Verizon Business – Communications

We Energies – Electric

We Energies – Gas

WIN Technology – Communications

*Replace entire section titled **Site 31** with the following:*

Site 31

Spectrum – Communications has facilities within the limits of this site. The following utility work may occur in this site while clearing is taking place:

Spectrum will relocate facilities approximately one-half mile north and one-half mile south of the clearing areas, but not within those areas. Coordinate traffic control and hauling with Spectrum.

We Energies – Gas has facilities within the limits of this site. The following utility work may occur in this site while clearing is taking place:

We Energies will discontinue a 4" steel gas line and place a new 6" steel gas line from approximately Station 148+50 to 171+00, 23'-25' LT, and from Station 171+00 to approximately Station 176+33, 24' to 151' LT.

Additional work will occur south of the clearing limits by approximately one-half mile. Coordinate traffic control and hauling with We Energies.

Contact 1 (800) 261-5325 for gas emergencies, to identify if gas facilities are live, and gas valve box adjustments.

It is imperative that the highway contractor contact We Energies before removing any gas facilities to verify that they have been discontinued and carry no natural gas. The contractor must not assume that unmarked facilities have been discontinued. At no time is it acceptable to push, pull, cut, or drill an unmarked facility without explicit consent from We Energies. Contractor must call the We Energies 24-hour Dispatch lines to arrange for this verification.

We Energies Gas Dispatch, 1 (800) 261-5325

Utility work is expected to take 150 days.

The following utility companies have facilities within the limits of this site; however, no adjustments are anticipated:

Alliant Energy – Electric

AT&T Wisconsin – Communications

ATC Management Inc. – Electric Transmission

City of Delavan Water and Sewage Utility – Water

Delavan Lake Sanitary District – Sewer

Geneva National Sanitary District – Sewer

Village of Williams Bay – Sewer

Village of Williams Bay – Water

Walworth County Metro Sewage District – Sewer

Windstream KDL LLC – Communications

18. Notice to Contractor – Milwaukee County Parks Permit.

Add the following to the end of the article:

Site 10

A Right of Entry Permit is required to perform the work within the Milwaukee County Park property. Contact Guy Smith at (414) 257-7275 to complete a Right of Entry Permit to perform any tree clearing work within park property.

Notify the Park Maintenance Unit at (414) 258-2322 for utility locates 5 days prior to beginning the above-mentioned work. The County's Park Maintenance personnel will locate Milwaukee County Parks utilities within their ROW.

The contractor shall be responsible for returning the signed permit and fee to Milwaukee County Parks. The cost of the permit fee is incidental to construction. The contractor must obtain this permit in order to perform construction operations for this project.

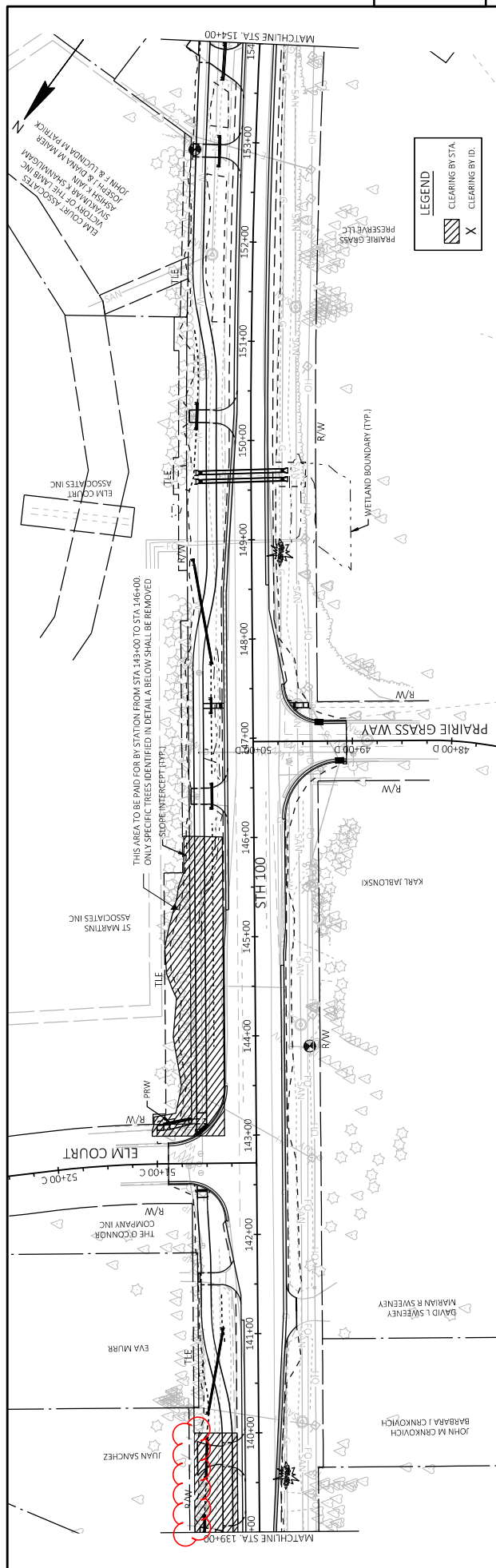
Plan Sheets

The following 8½ x 11-inch sheets are attached and made part of the plans for this proposal:

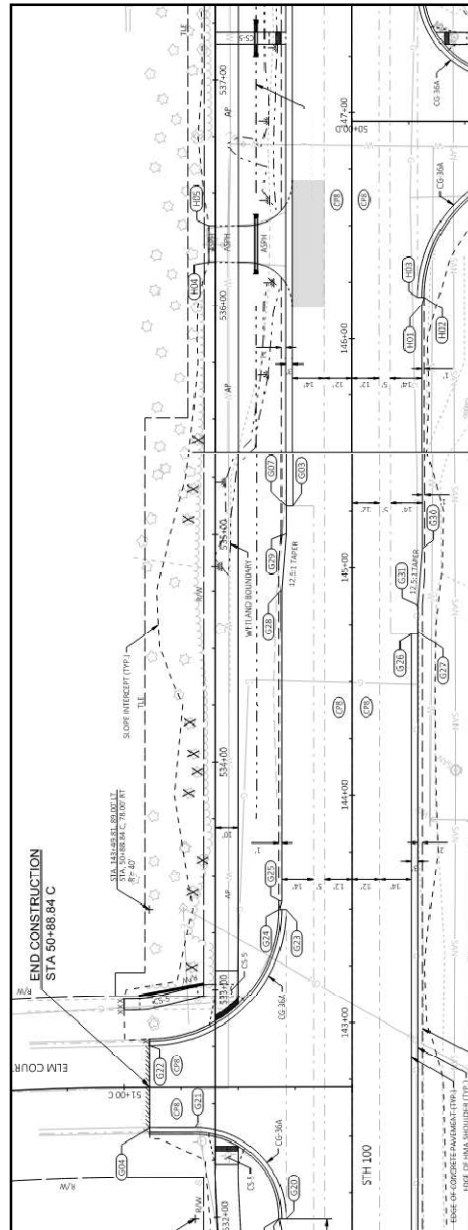
Revised: 47, 48, 49, 51, and 62

Deleted: 43 - 46

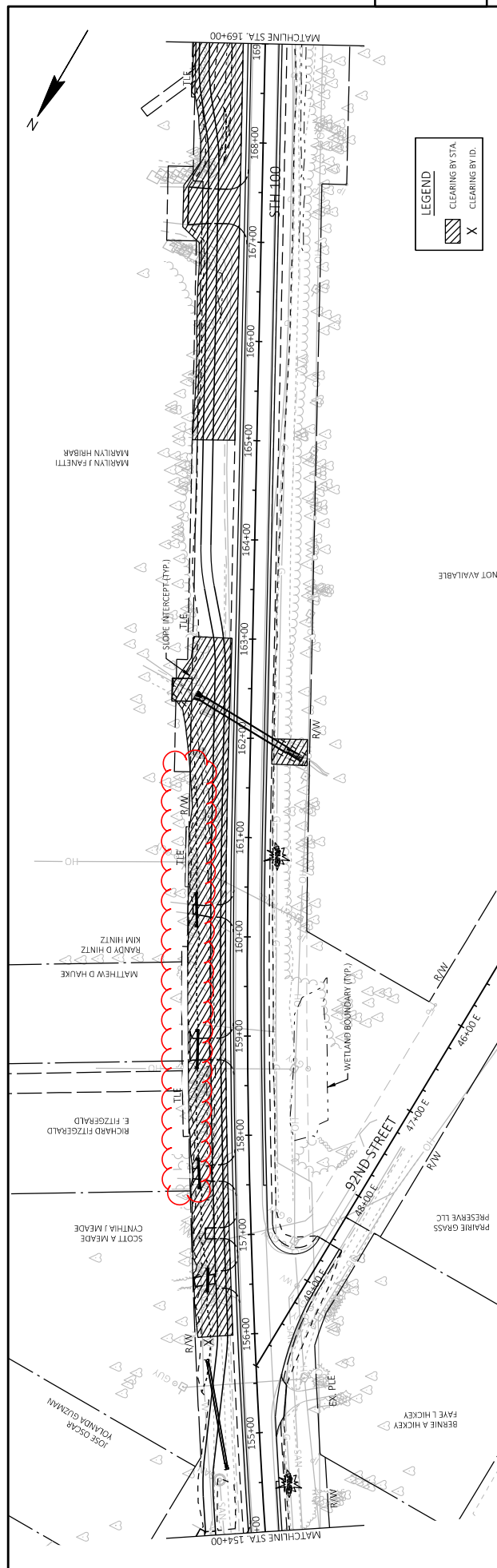
END OF ADDENDUM



Addendum No. 01
ID 3742-02-71
Revised Sheet 48
August 20, 2024

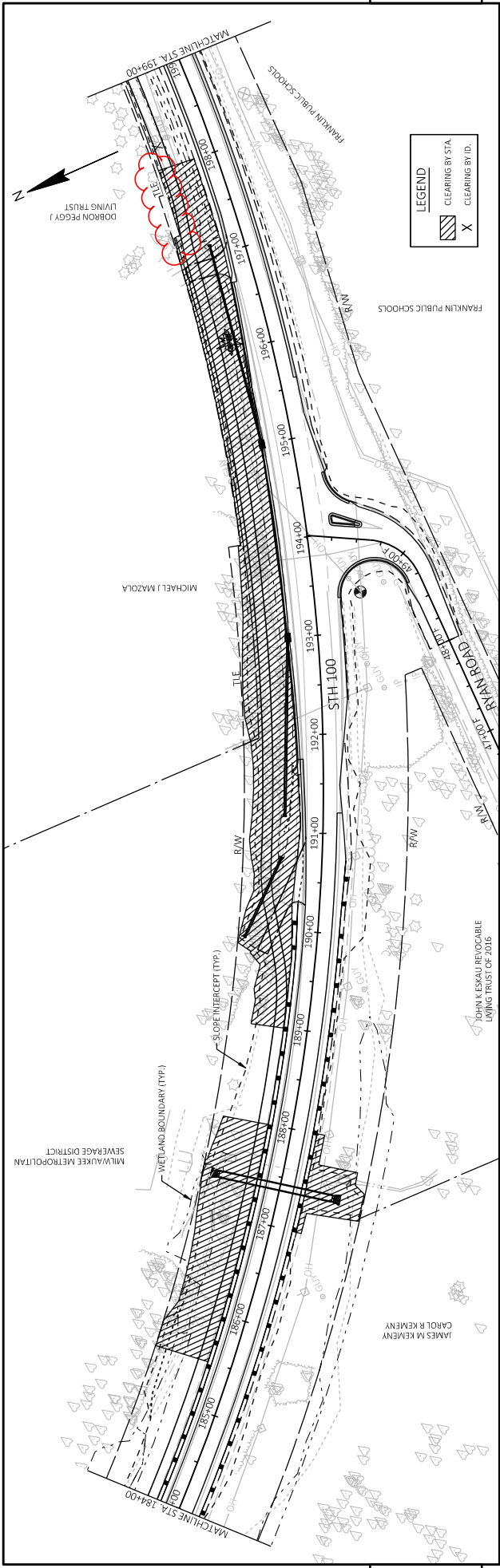


STA. 143+24, 70' LT
STA. 143+57, 70' LT
STA. 143+71, 66' LT
STA. 144+00, 72' LT
STA. 144+10, 68' LT
STA. 144+18, 70' LT
STA. 144+32, 71' LT
STA. 145+21, 72' LT
STA. 145+35, 70' LT
STA. 145+55, 68' LT



Addendum No. 01
ID 3742-02-71
Revised Sheet 49
August 20, 2024

PROJECT NO: 3742-02-71		HWY: STH 100		COUNTY: MILWAUKEE	REMOVAL PLANS - SITE 10		SHEET	E	
FILE NAME: S:\MILL000~1999\ADDITIONS\DRAWINGS\CAVATOCADD\CIVIL_3D\04201503\SHEETS\PLAN\CLEARING AND GRUBBING PLAN\CLEARING GRUBBING_050101.PLOT.DWG				PLOT DATE: 5/6/2024 11:54 AM		PLOT BY: SADOWSKI_ZACH		PLOT SCALE: 1 IN.=100 FT	
WSPOT/CADD/SHEET 44									



Addendum No. 01
ID 3742-02-71
Revised Sheet 51
August 20, 2024

PROJECT NO: 3742-02-71		HWY: STH 100	COUNTY: MILWAUKEE	PLAN AND PROFILE: REMOVAL PLANS - SITE 10		SHEET 51	E
FILE NAME: S:\MILW1000-1099\1089\1083\DRAWINGS\CAD\AUTOCAD\CIVIL\3D\0401313\3SHEETS\PLAN\CLEARING AND GRUBBING PLAN\CLEARING_GAUBBING_050101_PP.DWG		PLOT DATE: 5/31/2024 11:56 AM		PLOT BY: SADOWSKI, ZACH		PLOT SCALE: 1 IN=100 FT	
LAYOUT NAME: 050105_PP						WSDOT/CADD/SHEET 44	

