



Wisconsin Department of Transportation

August 7, 2024

Division of Transportation Systems Development

Bureau of Project Development
4822 Madison Yards Way, 4th Floor South
Madison, WI 53705

Telephone: (608) 266-1631
Facsimile (FAX): (608) 266-8459

NOTICE TO ALL CONTRACTORS:

Proposal #09: 1130-44-74, WISC 2024402
Appleton – Green Bay
Wrightstown SWEF 34/Post-Bldg
IH 41
Outagamie County

Letting of August 13, 2024

This is Addendum No.01, which provides for the following:

Special Provisions:

Revised Special Provisions	
Article No.	Description
58	SWEF/Post Building, General Construction, Item SPV.0060.100
65	Main Communications Tower, Item SPV.0060.200

Schedule of Items:

Revised Bid Item Quantities					
Bid Item	Item Description	Unit	Proposal Total Prior to Addendum	Proposal Quantity Change (-)	Proposal Total After Addendum
SPV.200.020	Construct Outside Drop, 6-Inch	VF	7	7	14

Plan Sheets:

Revised Plan Sheets	
Plan Sheet	Plan Sheet Title (brief description of changes to sheet)
49	Label inside drops
94	Revised propane detail setup to include single regulator.
125	Revised window callouts to match elevation view
128	Revised window callouts to match elevation view
233	Revised Detail 4 on S801
234	Added note on Detail 5
353	Revised Construct Inside Drop 6-Inch quantity

The responsibility for notifying potential subcontractors and suppliers of these changes remains with the prime contractor.

Sincerely,

Mike Coleman

Proposal Development Specialist
Proposal Management Section

ADDENDUM NO. 01

1130-44-74

August 7, 2024

Special Provisions

58. SWEF\Post Building, General Construction, Item SPV.0060.100.

*Replace subsection titled 3.2 FIELD OFFICE under subsection titled **PART 3 – EXECUTION** under section **SECTION 01 56 10 – Temporary Facilities & Installations** with the following:*

3.2 FIELD OFFICE

- A. The General Building Contractor shall provide and maintain a field office during the entire duration of the construction project.
- C. Each office area shall be provided with a large, smooth-top worktable, one office desk w/lock, four chairs, a four drawer file with lock, including janitorial service.
- D. A Large room for project meetings shall be provided as well.
- E. The General Building Contractor shall coordinate additional field offices with subcontractors and vendors.

*Add the following to **Section 3.10 INTERIOR PAINT SCHEDULE** under section titled **Section 09 91 00 Painting**:*

- A. Concrete and Masonry (other than Concrete Masonry Units) to include:

5. Concrete floor slabs:

a. Semi-Gloss, fast cure epoxy:

- 1. 2 coats.**
- 2. Minimum DFT: 5.0 – 10.0 mils.**
- 3. Minimum VS: 72 percent.**
- 4. Surface Preparation: SSPC-SP 14 to a CSP 1-3.**
- 5. Color as selected by E/A.**
- 6. S-W: Macropoxy 646.**

65. Main Communications Tower, Item SPV.0060.200.

Section 33 81 00 – Communication Towers

Part 1 – General

Add the following after FIELD CONDITIONS last paragraph:

QUALIFICATIONS:

Approved tower manufacturers include:

- 1. Sabre Industries – Alvarado, TX
- 2. Valmont Industries – Omaha, NE
- 3. Rohn Products – Peoria, IL

Part 2 – PRODUCTS, SELF-SUPPORT TOWERS

Revise the first sentence to the following:

Self-support towers shall be a free standing, three legged, structures constructed of galvanized steel

and of the general profile as shown in the drawings.

Schedule of Items

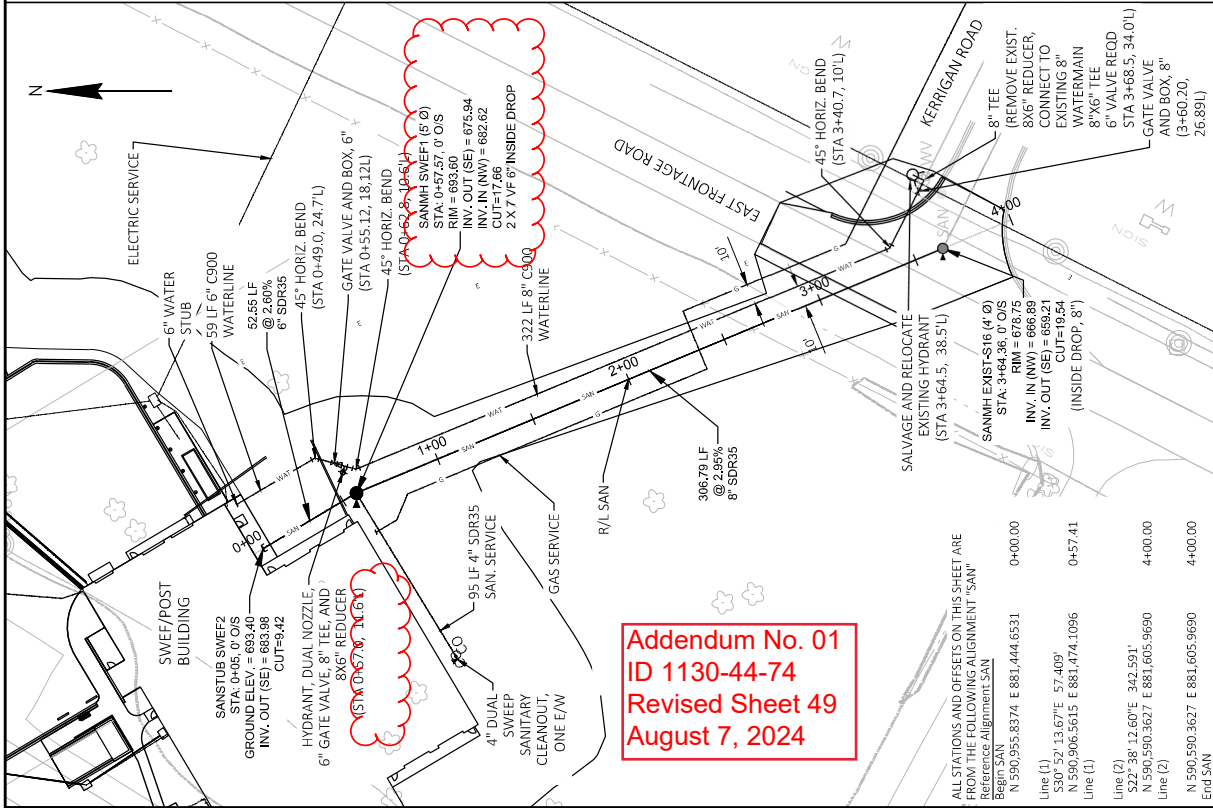
Attached, dated August 7, 2024, are the revised Schedule of Items Page 12.

Plan Sheets

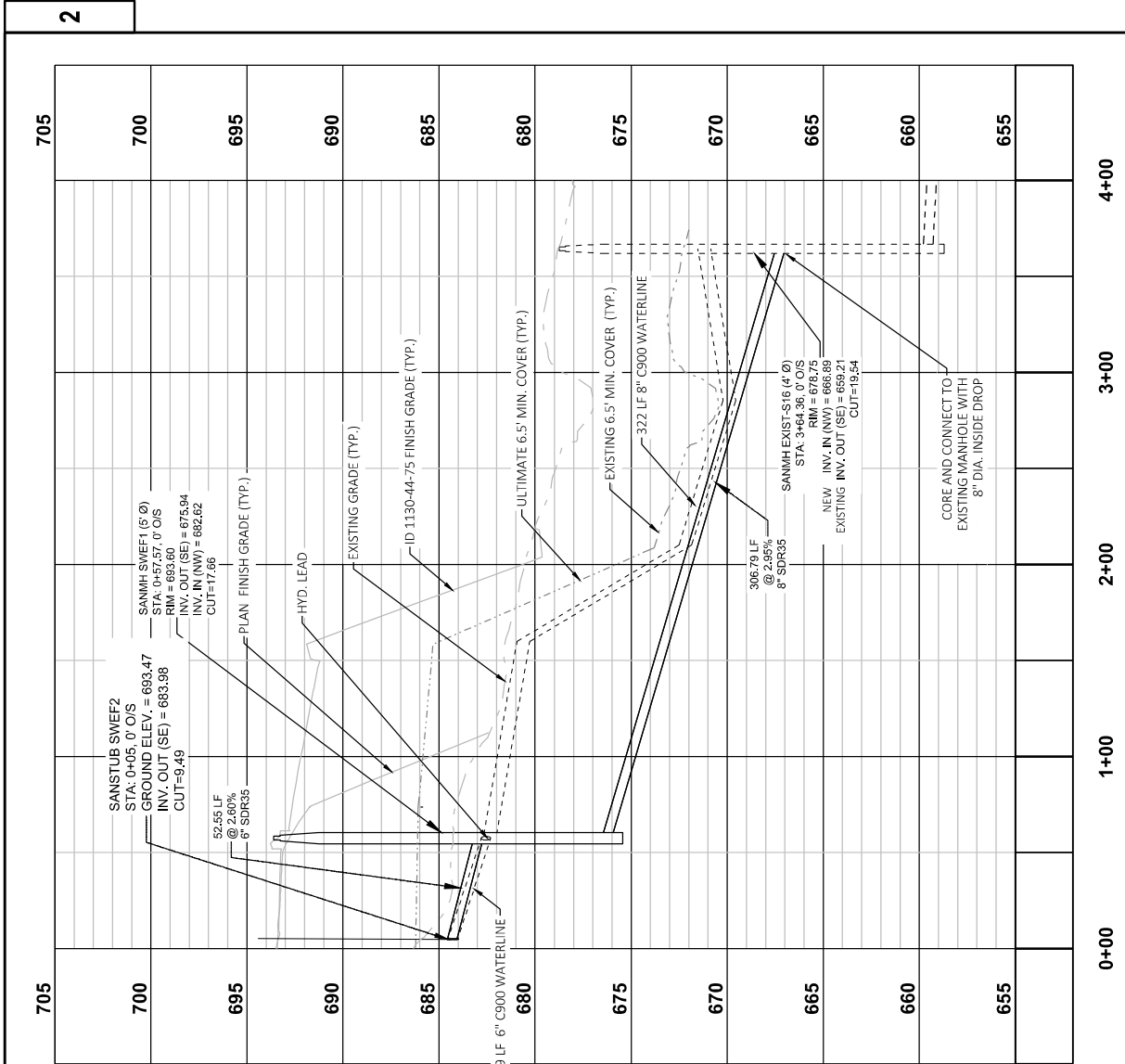
The following 8½ x 11-inch sheets are attached and made part of the plans for this proposal:

Revised: 49, 94, 125, 128, 233, 234, 353

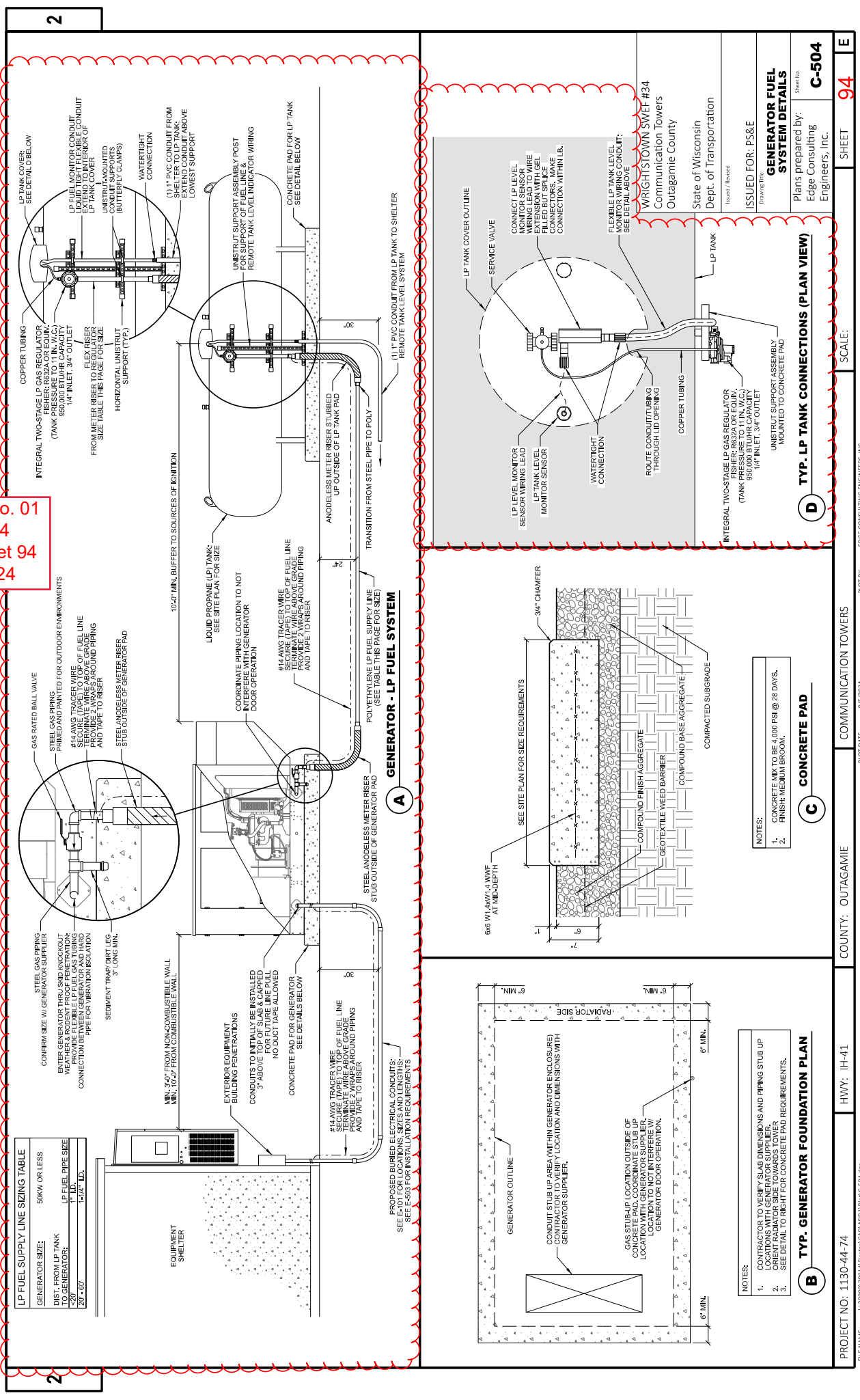
END OF ADDENDUM



Addendum No. 01
ID 1130-44-74
Revised Sheet 49
August 7, 2024



Addendum No. 01
ID 1130-44-74
Revised Sheet 94
August 7, 2024



KEY PLAN

6. GC SHALL SUBMIT INDICATED PRE-CASTING AND FORMWORK PROPOSALS TO BUILDING DEPARTMENT FOR REVIEW PRIOR TO PROCEEDING WITH WORK.

7. FOR TYPICAL CMU CURING CONFINEMENTS AND FINISHES, SEE 2 / A502

8. SEE STRUCTURAL, FOR ADDITIONAL REQUIREMENTS FOR PRECAST ELEMENTS.

9. WALL-MOUNTED MOUNTING JOISTS AND MONITORS BY OWNER, CONTRACTOR TO PROVIDE BLOCKING/STAPLING AS REQUIRED AT FRAMED WALLS CAPABLE OF SUPPORTING 125 LBS/IN² MINIMUM, COORDINATE WITH POWER AND H. REQUIREMENTS, SEE SCHED. SHEETS.

10. AT ALL WALL TELELOCATIONS, CONTRACTOR SHALL PROVIDE CEILING/CEILING-TO-WALL BRACKET SUBSTITUTED IN LIEU OF EPSOM BOARD AND INSTALL PER CMCA REQUIREMENTS.

PLAN

AREA A
1 / A106

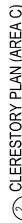
AREA B
1 / A107

AREA C
1 / A108

PLAN NORTH
TRUE NORTH

FLOOR PLAN KEYNOTES

- [illegible]



CLERESTORY PLAN (AREA C)



① UPPER LEVEL FLOOR PLAN (AREA C)

5/1/24	ISSUE FOR: FINAL
--------	------------------

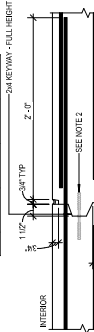
WRIGHTSTOWN SWEEP & STATE PATROL POST FACILITY

Autodesk Docs://KLENG 21001 - SWEF/KLENG 21001 SWEF A21.rvt

PLOT DATE: 8/6/2024 9:45:45 AM

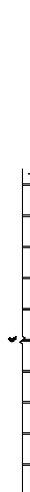
128

128



PROVIDE CONTINUOUS PVC WATERSTOP CENTERED IN CJ OF WALLS IN LIQUID RETAINING STRUCTURES

1 TYPICAL FOOTING AND FOUNDATION WALL DETAIL



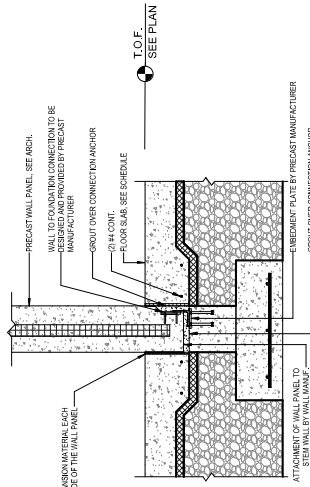
6 TYPICAL CORNER/INTERSECTION REINFORCING DETAIL



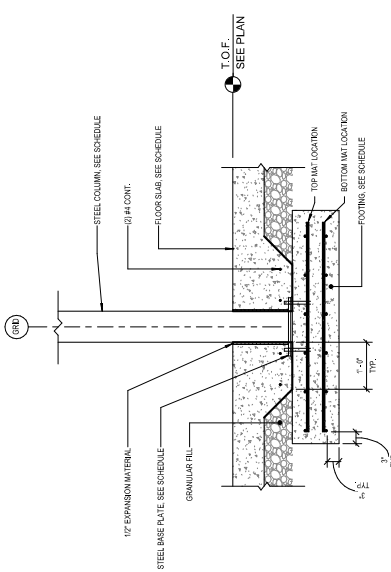
TYPICAL DIAGONAL REINFORCING AT CONCRETE WALL AND SLAB OPENINGS DETAIL



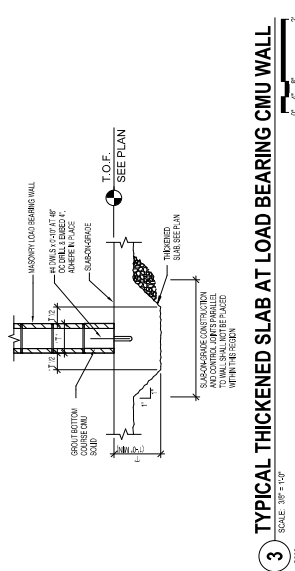
PLANS PREPARED BY: CBS SQUARED, INC., CHIPPEWA FALLS, WI		STRUCTURAL FOUNDATION DETAILS		ISSUED DATE:	5/11/24	FINAL
PROJECT NO: 1130-44-74		COUNTY: OUTAGAMIE		WRIGHTSTOWN SWEET & STATE PATROL POST FACILITY		
HWY: IH 41		PLOT DATE: 8/6/2024 11:09:38 AM		SHEET NO:		233



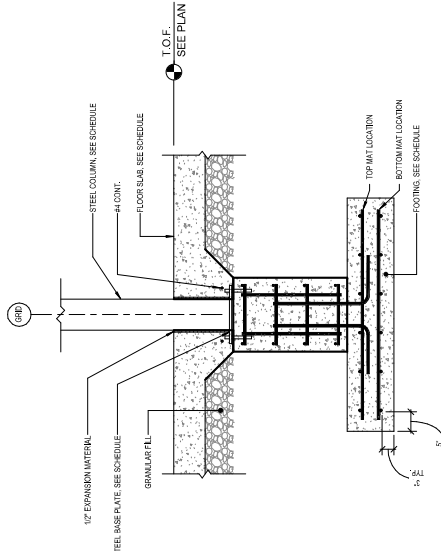
1 INTERIOR PRECAST WALL FOUNDATION DETAIL
SCALE: 3/8" = 1'-0"
S802



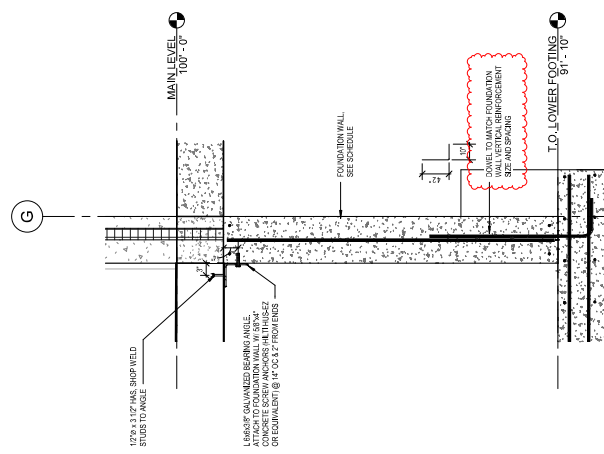
2 INTERIOR COLUMN FOUNDATION DETAIL
SCALE: 3/8" = 1'-0"
S802



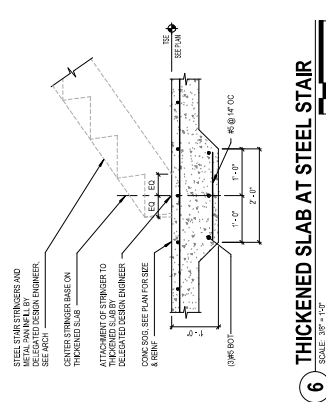
3 TYPICAL THICKENED SLAB AT LOAD BEARING CMU WALL
SCALE: 3/8" = 1'-0"
S802



4 TYPICAL CONCRETE PIER DETAIL
SCALE: 3/8" = 1'-0"
S802



5 INSPECTION PIT DETAIL
SCALE: 3/8" = 1'-0"
S802



6 THICKENED SLAB AT STEEL STAIR
SCALE: 3/8" = 1'-0"
S802

Addendum No. 01
ID 1130-44-74
Revised Sheet 234
August 7, 2024

PLANS PREPARED BY: CBS SQUARED, INC., CHIPPEWA FALLS, WI		STRUCTURAL FOUNDATION DETAILS		DATE	REVISION
PROJECT NO: 1130-44-74		COUNTY: OUTAGAMIE	WRIGHTSTOWN SWEF & STATE PATROL POST FACILITY	5/1/24	FINAL
HWY: IH 41				S802	234

ALL ITEMS IN THIS TABLE ARE CAT 0030									
LOCATION	SPV.0060.020 SANITARY SEWER MANHOLE W/CASTING 5-FT DIAMETER EACH	SPV.0060.021 CONSTRUCTION STAKING SANITARY SEWER EACH	SPV.0060.022 SANITARY SEWER CLEANOUT EACH	SPV.0060.023 SANITARY MANHOLE 8-INCH CORE EACH	SPV.0090.021 SANITARY SEWER MAIN 8-INCH LF	SPV.0090.022 SANITARY SEWER SERVICE PVC 6-INCH LF	SPV.0090.023 SANITARY SEWER LATERAL, 4-INCH LF	SPV.200.020 CONSTRUCT INSIDE DROP, 6-INCH, VF	SPV.0200.021 CONSTRUCT INSIDE DROP, 8-INCH, VF
WRIGHTSTOWN SWEE/POST	1	1	2	1	322	59	95	14	8
PROJECT 1130-44-74 TOTAL	1	1	2	1	322	59	95	14	8

ALL ITEMS IN THIS TABLE ARE CAT 0330									
LOCATION	SPV.0060.030	SPV.0060.031	SPV.0060.032	SPV.0060.033	SPV.0060.034	SPV.0060.035	SPV.0060.036	SPV.0090.031	SPV.0090.032
	CONNECT TO EXISTING WATER MAIN	GATE VALVE AND BOX 6-INCH	GATE VALVE AND BOX 8-INCH	REMOVE AND REPLACE HYDRANT	FURNISH AND INSTALL HYDRANT	STAKING WATER MAIN	MAINTAIN WATER SERVICE DURING CONSTRUCTION	MAIN WATER CON 6-INCH	WATER MAIN CON 8-INCH
	EACH	EACH	EACH	EACH	EACH	EACH	EACH	LF	LF
WRIGHTSTOWN SWEE/POST	1	2	1	1	1	1	1	59	322
PROJECT 1130-44-74 TOTAL	1	2	1	1	1	1	1	59	322

FITTING LOCATION	* FITTING TYPE
STA 0+49.0, 24.7' LT	6-INCH 45 DEG. HORIZONTAL BEND
STA 0+57.0, 11.6' LT	6-INCH 90 DEG. HYDRANT LEAD BEND
STA 0+57.0, 16.0' LT	8-INCH 6-INCH REDUCER
STA 0+58.5, 14.1' LT	8-INCH X 6-INCH TEE
STA 0+62.8, 10.1' LT	8-INCH 45 DEG. HORIZONTAL BEND
STA 3+40.7, 10.1' LT	8-INCH 45 DEG. HORIZONTAL BEND
STA 3+68.5, 34.0' LT	8-INCH X 6-INCH TEE
STA 3+64.5, 38.5' LT	6-INCH 90 DEG. HYDRANT LEAD BEND

Addendum No. 01
ID 1130-44-74
Revised Sheet 353
August 7, 2024



Proposal Schedule of Items

Page 12 of 12

Proposal ID: 20240813009 Project(s): 1130-44-74

Federal ID(s): WISC 2024402

SECTION: 0001

Contract Items

Alt Set ID:

Alt Mbr ID:

Proposal Line Number	Item ID Description	Approximate Quantity and Units	Unit Price	Bid Amount
0328	SPV.0090 Special 002. Concrete Curb and Gutter 24-Inch Type D	665.000 LF	_____.	_____.
0330	SPV.0090 Special 003. 12-CT Fiber Optic Cable	395.000 LF	_____.	_____.
0332	SPV.0090 Special 004. Aluminum Landscape Edging	175.000 LF	_____.	_____.
0334	SPV.0090 Special 021. Sanitary Sewer Main 8-inch	322.000 LF	_____.	_____.
0336	SPV.0090 Special 022. Sanitary Sewer Service PVC 6-inch	59.000 LF	_____.	_____.
0338	SPV.0090 Special 023. Sanitary Sewer Lateral, 4- Inch	95.000 LF	_____.	_____.
0340	SPV.0090 Special 031. Water Main C900 6-inch	59.000 LF	_____.	_____.
0342	SPV.0090 Special 032. Water Main C900 8 -inch	322.000 LF	_____.	_____.
0344	SPV.0180 Special 001. Topsoil Stripping	9,700.000 SY	_____.	_____.
0346	SPV.0180 Special 002. Weed Barrier Fabric	520.000 SY	_____.	_____.
0348	SPV.0200 Special 020. Construct Outside Drop, 6- Inch	14.000 VF	_____.	_____.
0350	SPV.0200 Special 021. Construct Inside Drop, 8- Inch	8.000 VF	_____.	_____.
Section: 0001			Total:	_____.
			Total Bid:	_____.