



Wisconsin Department of Transportation

March 1, 2016

Division of Transportation Systems Development

Bureau of Project Development
 4802 Sheboygan Avenue, Rm 601
 P O Box 7916
 Madison, WI 53707-7916

Telephone: (608) 266-1631
 Facsimile (FAX): (608) 266-8459

NOTICE TO ALL CONTRACTORS:

Proposal #19: 4987-02-57, WISC 2016 061
City of Green Bay, CTH N
Cornelius Drive to Spartan Road
CTH N
Brown County

Letting of March 8, 2016

This is Addendum No. 01, which provides for the following:

Special Provisions

Revised Special Provisions	
Article No.	Description
3	Prosecution and Progress
6	Work by Others
7	Utilities

Added Special Provisions	
Article No.	Description
34	Other Contracts

Deleted Special Provisions	
Article No.	Description
20	Topsoil

Schedule of Items

Revised Bid Item Quantities					
Bid Item	Item Description	Unit	Old Quantity	Revised Quantity	Proposal Total
SPV.0090.01	Storm Sewer Lateral 6-Inch	LF	406	6	412
SPV.0090.02	Storm Sewer Lateral 12-Inch	LF	203	35	238

Plan Sheets

Revised Plan Sheets	
Plan Sheet	Plan Sheet Title (brief description of changes to sheet)
41	Storm Sewer – revised location of Storm Sewer Lateral 6-Inch
44	Storm Sewer – revised location of Storm Sewer Lateral 12-Inch
74	Miscellaneous Quantities – Revised quantities for Storm Sewer Laterals

The responsibility for notifying potential subcontractors and suppliers of these changes remains with the prime contractor.

Sincerely,

Mike Coleman

Proposal Development Specialist
Proposal Management Section

ADDENDUM NO. 01

4987-02-57

March 1, 2016

Special Provisions

3. Prosecution and Progress

Replace paragraph five with the following:

If prosecution of controlling items of work are interfered with by Brown County's operations, the contractor will not be charged working days.

6. Work by Others

Replace entire article language with the following:

Brown County will be placing and removing the project detour route signing, will be placing all HMA layers including density testing, will remove all existing roadway signing at the beginning of construction operations and placing of permanent roadway signing at the completion of construction operations. The City of Green Bay and Brown County will be clearing the existing trees with grubbing being part of the contract.

Coordinate construction operations with Brown County. For detour route set up, contact Brown County 14 calendar days in advance of the start of construction operations. Brown County will require five working days to complete the set up the project detour route. Brown County contact: Rachel Ballast (920) 662-2155.

Coordinate hot mix asphalt (HMA pavement) construction operations with Brown County. Contact Brown County 14 calendar days in advance of the start of HMA paving operations. Brown County will need 8 working days to complete HMA paving of the project. Brown County contact: Rachel Ballast (920) 662-2155.

Coordinate roadway sign removal. For the removal of existing roadway signs, contact Brown County 14 calendar days in advance of the start of construction operations. Brown County will require 5 working days to remove existing roadway signs. Brown County contact: Rachel Ballast (920) 662-2155.

Coordinate permanent roadway sign installation. Contact Brown County 14 calendar days in advance of the placement of permanent roadway signs. Brown County will require 5 working days to place permanent roadway signs. Brown County contact: Rachel Ballast (920) 662-2155.

7. Utilities

Replace entire article language with the following:

This contract does not come under the provision of Administrative Rule Trans 220. 107-065 (20080501)

AT&T (communications) has existing underground facilities within the construction limits. AT&T also has some overhead facilities within the construction limits. All underground relocations have been completed as of February 25, 2016. All aerial relocations on WPS poles will be completed by April 22, 2016.

The field contact for AT&T is Joseph Kassab, (920) 735-3206 or jk572k@att.com.

City of Green Bay (sanitary) has underground sanitary sewer on the south side of CTH N from approximate Sta 500+00 to 517+75, on the north side of CTH N from Sta 513+75 to 536+30, on the south side of CTH N from Sta 536+30 to 543+75, and on the south side of CTH N from Sta 550+70 to 556+90.

The City plans to add sanitary sewer on the south side of CTH N from approx. STA 517+75 to 531+00, 534+25 to 536+30, 543+75 to 550+70, 556+90 to 569+00. The City plans to install a new sanitary manhole at approximate Sta 513+35, 15' RT, along with a lateral extending to the south to the Arnie Wolff Sports Complex.

The City plans to complete sanitary manhole reconstruction on 17 sanitary manholes, at the following locations:

513+71.8, 15.8' RT	521+75.1, 28.5' LT	536+28.4, 28.0' LT	541+50.8, 35.4' RT
513+72.5, 32.6' RT	525+73.2, 23.6' LT	536+28.6, 34.4' RT	543+77.2, 35.3' RT
513+73.6, 31.4' LT	529+45.8, 27.8' LT	537+34.6, 35.6' RT	554+42.3, 29.1' RT
514+48.2, 26.4' LT	532+98.5, 29.2' LT	538+87.8, 35.5' RT	556+92.6, 30.4' RT
517+75.4, 26.1' LT			

All sanitary sewer work, sanitary manhole reconstruction, and sanitary manhole construction will be completed by the City of Green Bay's sanitary contractor concurrently with roadway construction. The City of Green Bay's sanitary contractor will begin their work by April 27, 2016 and complete all sanitary sewer, sanitary manhole reconstruction and sanitary manhole construction by June 3, 2016. The City intends to have all sanitary sewer work progress from the west end of the project to the east end. All reconstructed sanitary manholes and new sanitary manholes will be set to match existing ground conditions. Adjustments of the sanitary manhole castings on the existing, reconstructed, and new sanitary manholes will be completed under the contract as non-participating work by the contractor.

The field contact for Green Bay Sanitary is Kristin Romanowicz, (920) 448-3100 or kristinro@greenbaywi.gov.

Green Bay Water Utility (water) has underground facilities on the north side of CTH N for the entire length of the project. There is also a pressure reducing valve station located at Sta 527+00 Lt at the NE corner of CTH N and Lake Largo. There are also underground facilities along east side of Lake Largo Dr and Spartan Road.

Green Bay Water Utility (GBWU) plans to move any hydrants in conflict with the proposed sidewalk. GBWU also plans to adjust the pressure reducing valve station and water valves. All adjustments will be done concurrently with roadway construction. Work to be completed by GBWU during construction will take approximately 5 working days.

Notify GBWU at least 10 working days in advance of grading near Sta 527+00 LT to coordinate locations and any excavation near their facilities.

Location and Conflict	Resolution
Sta 502+10 LT, 507+30 LT, 513+20 LT, and 550+75 LT – fire hydrants in conflict with the proposed sidewalk	Move hydrants
Sta 527+00 LT – Reducing Valve Station in conflict with proposed grade	Adjust the Reducing Valve Station

The field contact for GBWU is Jeff Wolford, (920) 621-8071 or JeffWo@greenbaywi.gov.

Wisconsin Public Service Corporation (Gas) has existing underground facilities on the south side of CTH N for the entire length of the project. WPS also has existing underground facilities on the west and east side of Lake Largo Dr, on the west side of Woodside Road, on east side of CTH EA, and on west side of Spartan Rd.

All relocations have been completed as of February 25, 2016.

The field contact for WPS gas is David Retzlaff, (920) 617-5237 or dpretzlaff@wisconsinpublicservice.com.

Wisconsin Public Service Corporation (Electric) has existing overhead facilities on south side of CTH N for the entire length of the project. WPS existing overhead facilities cross CTH N at Sta 513+64 and at Spartan Road. WPS also has an underground crossing at Lake Largo Drive and then runs on east side of Lake Largo Drive.

WPS proposes to relocate poles in conflict to the north side of CTH N or reset poles to account for proposed grade cuts. All relocations are anticipated to take 30 working days and will be completed by April 15, 2016.

Location and Conflict	Resolution
Sta 502+25 LT – pole in conflict with proposed sidewalk	Move pole north within utility easement.
Sta 513+60 RT - pole in conflict with proposed sidewalk	Move pole east 5'
Sta 526+20 LT – pole in conflict with proposed curb and gutter along Lake Largo Road	Move pole west 2'
Sta 526+25 LT – underground facility in conflict with storm sewer	Bore new facility near Sta 527+10
Sta 531+05 – underground facility in conflict with storm sewer	Bore new facility 20' north
Sta 533+25 RT, 535+20 RT, 537+30 RT, 539+30 RT – poles in conflict with proposed grade.	Install new poles to account for proposed grade cuts.
Sta 540+50 RT – guy wire in conflict with proposed sidewalk	Move anchor out of proposed sidewalk
Sta 541+55 RT, 543+35 RT, 545+05 RT – poles in conflict with proposed sidewalk	WPS will move AT&T poles for proposed grade change. AT&T will need to move their facility once the poles are moved.
Sta 551+10 RT, 552+45 RT – pole in conflict with proposed sidewalk.	Move pole 1' and 2.5'south respectively.

The field contact for WPS electric is Randy Steier, (920) 617-5167 or rdsteier@wisconsinpublicservice.com.

Time Warner Cable (communications) has overhead facilities located on WPS utility poles for the entire length of the project. TWC also has underground facilities located within the project limits.

All underground relocations have been completed as of February 25, 2016. All aerial relocations on WPS poles will be completed by April 22, 2016.

The field contact for TWC is Vince Albin, (920) 831-9249 or Vince.Albin@twcable.com.

Brown County (communications) has underground facilities within the project limits on the north side of CTH N. No conflicts with construction.

The field contact for Brown County is Dan Becker, (920) 676-3496 or dbecker@mcae.biz.

20. DELETED

34. Other Contracts

The City of Green Bay has a concurrent grading project at the Arnie Wolff Sports Complex, located at 3240 Humboldt Road. City contractors will be accessing Arnie Wolff Sports Complex using the main driveway and at Cropp Drive right-of-way at approximate Sta 513+35. The grading work will be completed by June 30, 2016.

The field contact for Green Bay Arnie Wolff Sports Complex is Jennifer McCartney, (920) 660-6413.

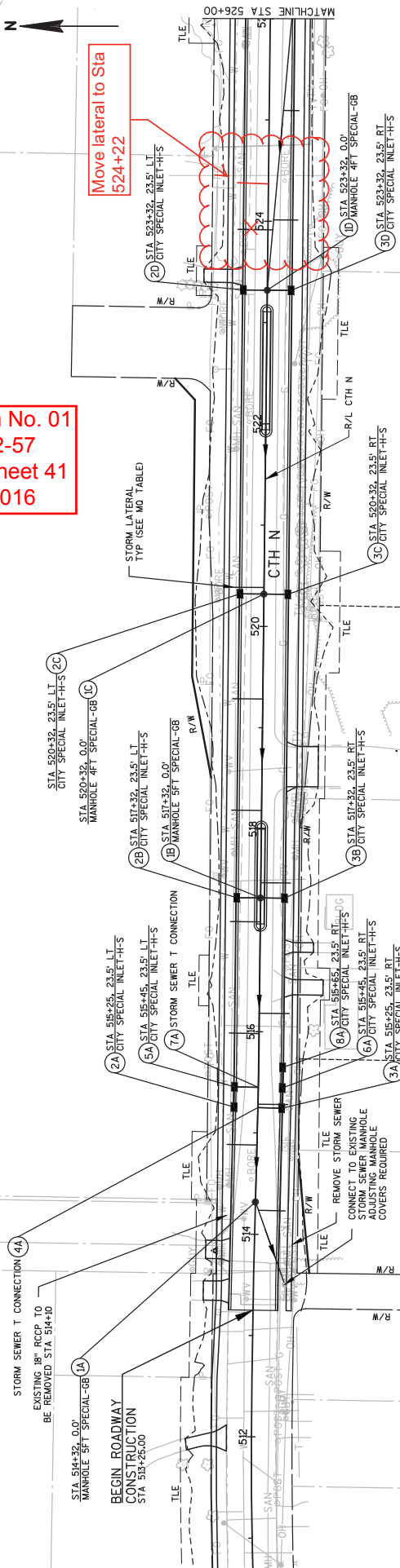
Schedule of Items

Attached, dated March 1, 2016, are the revised Schedule of Items Page 11.

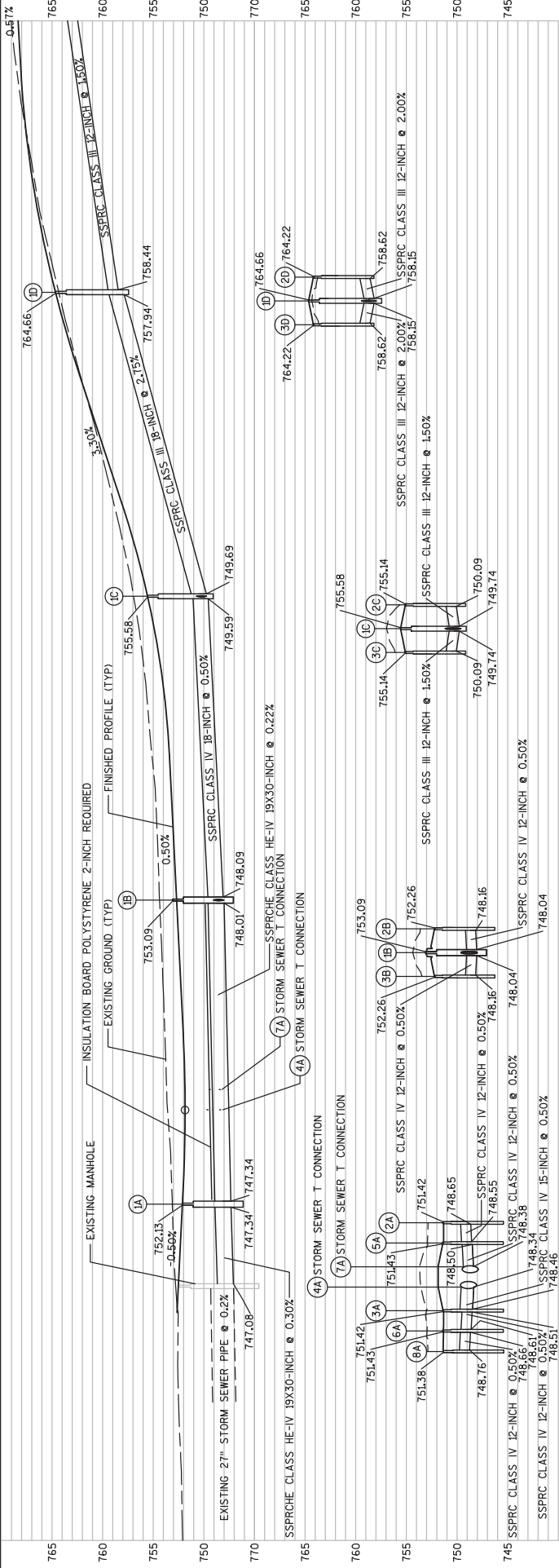
Plan Sheets

The following 8½ x 11-inch sheets are attached and made part of the plans for this proposal:
Revised: 41, 44, and 74.

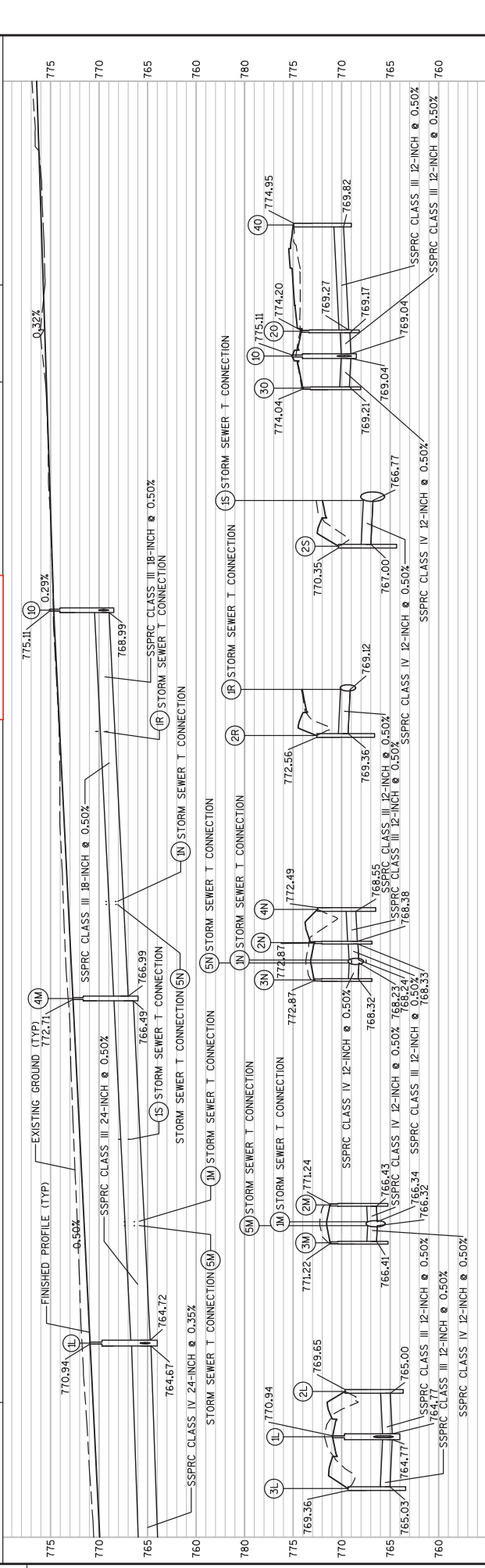
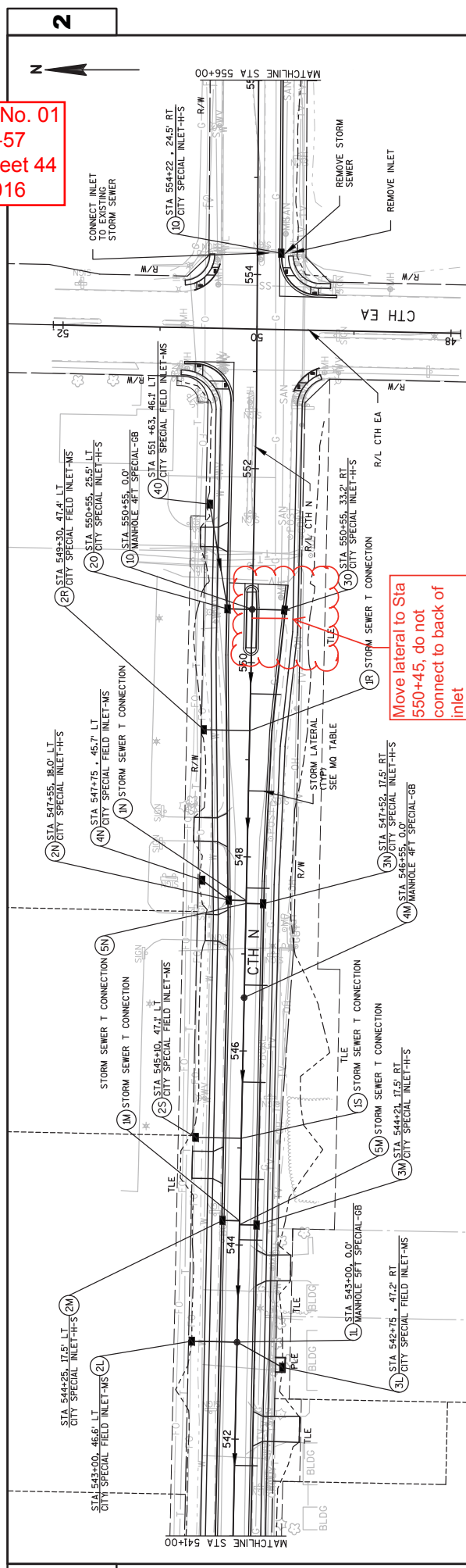
END OF ADDENDUM



Addendum No. 01
 ID 4987-02-57
 Revised Sheet 41
 March 1, 2016



Addendum No. 01
 ID 4987-02-57
 Revised Sheet 44
 March 1, 2016



2

ALL ITEMS ON THIS PAGE
ARE IN CATEGORY 0020

ADJUSTING SANITARY MANHOLE COVERS

LOCATION	STA	SPV.0060.07 EACH
CTHN	513+70	RT 1
	513+74	LT 1
	513+74	RT 1
	514+47	LT 2
	517+72	RT 1
	517+78	LT 1
	521+69	RT 1
	521+75	LT 1
	525+59	RT 1
	525+75	LT 1
	528+89	RT 1
	529+46	LT 1
	530+95	RT 1
	532+99	LT 1
	534+25	RT 1
	536+28	LT 1
	536+28	RT 1
	537+37	RT 1
	538+86	RT 1
	541+50	RT 1
	543+77	RT 1
	546+77	RT 1
	550+69	RT 1
	554+44	RT 1
	556+93	RT 1
	559+93	RT 1
	562+22	RT 1
	566+22	RT 1
	568+90	RT 1
LAKELARGO DRIVE		
TOTALS	21+42	CL 1
		31

STORM SEWER ITEMS

LOCATION	STATION	OFFSET	SPV.0090.01		SPV.0090.02		REMARKS
			STORM SEWER LATERAL 6-INCH	LF	STORM SEWER LATERAL 12-INCH	LF	
CTHN	514+23	RT					
	514+89	LT	26				
	514+89	RT	30				
	515+29	RT	30				
	515+96	LT	30				
	516+18	RT	30				
	517+08	LT	30				
	517+45	RT	30				
	518+18	LT	30				
	519+28	LT	30				
	520+38	LT	30				
	521+61	LT	30				
	524+22	LT	40				
	524+01	RT	24				
	525+09	RT	15				
	526+20	RT	7				
	541+73	RT	24				
	544+05	RT	24				
	544+68	RT	24				
	545+68	RT	24				
	546+68	RT	24				
	547+68	RT	24				
	548+68	RT	24				
	549+63	RT	26				
	550+45	RT	31				
TOTAL			412			238	
						40	CONNECT TO INLET

Addendum No. 01
ID 4987-02-57
Revised Sheet 74
March 1, 2016

SCHEDULE OF ITEMS

REVISED:

CONTRACT:
20160308019PROJECT(S):
4987-02-57FEDERAL ID(S):
WISC 2016061

CONTRACTOR : _____

LINE NO	ITEM DESCRIPTION	APPROX. QUANTITY AND UNITS	UNIT PRICE		BID AMOUNT	
			DOLLARS	CTS	DOLLARS	CTS
1080	SPV.0060 Special 04. Manhole 5 FT Special	5.000 EACH
1090	SPV.0060 Special 05. City Special Inlet	37.000 EACH
1100	SPV.0060 Special 06. City Special Field Inlet	12.000 EACH
1110	SPV.0060 Special 07. Adjusting Sanitary Manhole Covers	31.000 EACH
1120	SPV.0075 Special 01. Street Sweeping	40.000 HRS
1130	SPV.0090 Special 01. Storm Sewer Lateral 6-Inch	412.000 LF
1140	SPV.0090 Special 02. Storm Sewer Lateral 12-Inch	238.000 LF
1150	SPV.0090 Special 03. Pavement Marking Crosswalk Epoxy 8-Inch	1,270.000 LF
1160	SPV.0090 Special 04. SHES Concrete Curb & Gutter 30-Inch Type D	30.000 LF
1170	SPV.0105 Special 01. Concrete Pavement Joint Layout	LUMP	LUMP	.	.	.
1180	SPV.0180 Special 01. Concrete Joint Sealing	210.000 SY