



Wisconsin Department of Transportation

May 4, 2015

Division of Transportation Systems Development

Bureau of Project Development
 4802 Sheboygan Avenue, Rm 601
 P O Box 7916
 Madison, WI 53707-7916

Telephone: (608) 266-1631
 Facsimile (FAX): (608) 266-8459

NOTICE TO ALL CONTRACTORS:

Proposal #46: 1580-09-73, WISC 2015 014
C. Ladysmith, 3rd Street
Flambeau River Bridge B-54-0065
USH 8
Rusk County

8180-02-70, WISC 2015 018
Ladysmith - Ojibwa
Thornapple River Bridge B-54-0120
STH 27
Rusk County

Letting of May 12, 2015

This is Addendum No. 1, which provides for the following:

Special Provisions

Revised Special Provisions	
Article No.	Description
1	General
3	Prosecution and Progress

Added Special Provisions	
Article No.	Description
31	Expansion Device, B-54-0065
32	Asphaltic Surface Special, Item SPV.0195.01

Deleted Special Provisions	
Article No.	Description
19	Expansion Device Modular B-54-0065, Item 502.3110.S.01

Schedule of Items

Added Bid Item Quantities					
Bid Item	Item Description	Unit	Old Quantity	Revised Quantity	Proposal Total
SPV.0195.01	Asphaltic Surface Special	TON	0	1620	1620

Deleted Bid Item Quantities					
Bid Item	Item Description	Unit	Old Quantity	Revised Quantity	Proposal Total
455.0135	Asphaltic Material PG58-34P	TON	90	0	0
460.1100	HMA Pavement Type E-0.3	TON	1620	0	0

Plan Sheets

Revised Plan Sheets	
Plan Sheet	Plan Sheet Title (brief description of changes to sheet)
2	General Notes (Changed HMA Pavement to Asphaltic Surface Special)
3	Typical Sections (Changed HMA Pavement to Asphaltic Surface Special)
4	Construction Details (Changed HMA Pavement to Asphaltic Surface Special)
11	Miscellaneous Quantities (Removed Asphaltic Material, Changed HMA Pavement to Asphaltic Surface Special)

Other

Proposal Cover Sheet: Project 8180-02-70 had an error in the Project Description. The Project Description is revised to the following:

Ladysmith – Ojibwa
Thornapple River Bridge B-54-0120

The responsibility for notifying potential subcontractors and suppliers of these changes remains with the prime contractor.

Sincerely,

Mike Coleman

Proposal Development Specialist
Proposal Management Section

ADDENDUM NO. 1
1580-09-73 & 8180-02-70
May 6, 2015

Special Provisions

1. General

Replace the first paragraph with the following:

Perform the work under this construction contract for Project 1580-09-73, C. Ladysmith, 3rd Street, Flambeau River Bridge B-54-0065, USH 8, Rusk County, Wisconsin and Project 8180-02-70, Ladysmith – Ojibwa, Thornapple River Bridge B-54-0120, STH 27, Rusk County, Wisconsin as the plans show and execute the work as specified in the State of Wisconsin, Department of Transportation, Standard Specifications for Highway and Structure Construction, 2015 Edition, as published by the department, and these special provisions.

3. Prosecution and Progress

Replace the fourth paragraph with the following:

Complete all work on Project 1580-09-73 within eight calendar weeks of commencing work on that project and complete all work by August 21, 2015.

19. DELETED.

31. Expansion Device, B-54-0065.

A Description

This special provision describes furnishing and installing an expansion device in accordance to standard spec 502, as shown on the plans, and as hereinafter provided.

B Materials

The minimum thickness of the polychloroprene strip seal shall be ¼-inch for non-reinforced elastomeric glands and 1/8-inch for reinforced glands. Furnish the strip seal gland in lengths suitable for a continuous one-piece installation at each individual expansion joint location. Provide preformed polychloroprene strip seals that conform to the requirements ASTM D3542, and have the following physical properties:

Property Requirements	Value	Test Method
Tensile Strength, min.	2000 psi	ASTM D412
Elongation @ Break, min	250%	ASTM D412
Hardness, Type A, Durometer	60 ± 5 pts.	ASTM D2240
Compression Set, 70 hours @212°F, max.	35%	D395 Method B Modified
Ozone Resistance, after 70 hrs. at 100°F under 20% Strain with 100 pphm ozone	No Cracks	ASTM D1149 Method A
Mass Change in Oil 3 after 70 hr. 212°F Mass Change, max.	45%	ASTM D471

Install the elastomeric strip seal gland with tools recommended by the manufacturer, and with a lubricant adhesive conforming to the requirements of ASTM D4070.

The manufacturer and model number shall be one of the following approved strip seal expansion device products:

Manufacturer	Model Number Strip Seal Gland Size*		
	4-Inch	5-Inch	6-Inch
D.S. Brown	SSA2-A2R-400	SSA2-A2R-XTRA	SSA2-A2R-XTRA
R.J. Watson	RJA-RJ400	RJA-RJ500	RJA-RJ600
Watson Bowman Acme	A-SE400	A-SE500	A-SE800
Commercial Fabricators	A-AS400	----	----

*Expansion device strip seal gland size requirement of 4", 5", and 6" shall be as shown on the plans.

Furnish manufacturer's certification for production of polychloroprene represented showing test results for the cured material supplied, and certifying that it meets all specified requirements.

The steel extrusion or retainer shall conform to ASTM designation A 709 grade 36 steel. After fabrication, steel shall be galvanized conforming to the requirements ASTM A123.

Manufacturer's certifications for adhesive and steel shall attest that the materials meet the specification requirements.
502-020 (20110615)

32. Asphaltic Surface Special, Item SPV.0195.01

A Description

This special provision describes constructing Asphaltic Surface Special. Perform work according to standard specification 465 as shown on plans or designated by the engineer in the field and as hereinafter provided.

B Materials

Add the following to standard spec 465.2:

(3) Under the Asphaltic Surface Special bid item, furnish a department approved mix design to the engineer prior to placement. Furnish asphaltic mixture meeting the requirement for Type E-3 or greater under standard specification 460.2. Provide asphaltic material conforming to AC PG 58-34, AC PG 58-34P, AC PG 64-34, or AC PG 64-34P. The engineer will not require the contractor to conform to the quality management program specified under 460.2.8.

C Construction

Supplement subsection 460.3.2 to allow a minimum layer thickness of 1.5 inches for a 12.5mm nominal size mixture.

D Measurement

The department will measure Asphaltic Surface Special by the ton acceptably completed. The department will not measure asphaltic materials separately.

E Payment

The department will pay for measured quantities at the contract unit price under the following bid item:

ITEM NUMBER	DESCRIPTION	UNIT
SPV.0195.01	Asphaltic Surface Special	Ton

Payment is full compensation for submitting and furnishing an asphaltic mixture design, for preparing the foundation; for providing the asphaltic mixture, including asphaltic material and reclaimed asphaltic pavement materials; and for compaction of the mixture.

Schedule of Items

Attached, dated May 6, 2015, are the revised Schedule of Items Pages 1 – 12.

Plan Sheets

The following 8½ x 11-inch sheets are attached and made part of the plans for this proposal:
Revised: 2, 3, 4, and 11..

END OF ADDENDUM

STANDARD ABBREVIATIONS

ABUT	ABUTMENT	LT	LEFT
AC	ACRE	LN	LANE
AGG	AGGREGATE	LNSUM	LUMP SUM
ASPH	ASPHALTIC	LNT	LEFT TURN
AD	AVERAGE	MAN	MANHOLE
BAH	AVERAGE DAILY TRAFFIC	MNMILE	MILE
BBK	BEARING AHEAD	MAINLINE	MAINLINE
BF	BACK FACE	N	NORTH
B	BENCH MARK	NC	NORMAL CROWN
BR	BROW	NR	NORMAL
C/L	CENTER LINE	NOR	NOR
CE	CENTRAL ANGLE OR DELTA	OBLT	OBLITERATE
CMP	COMMERCIAL ENTRANCE	OB	OBLIQUE
CP	CORRUGATED METAL PIPE	PC	PRIVATE ENTRANCE
CPC	CONCRETE PIPE	PNT	POINT OF CURVATURE
CP	CONTROL PIPE	PI	POINT OF INTERSECTION
CPCP	CULVERT PIPE CORRUGATED POLYETHYLENE	POB	POINT OF BEGINNING
CPCH	CULVERT PIPE REINFORCED CONCRETE	POE	POINT OF END
CPCHC	CONCRETE PIPE CORRUGATED POLYETHYLENE CLASS HE-III	PVC	POINT OF VERTICAL CURVATURE
CR	CREAK	PV	POINT OF VERTICAL INTERSECTION
CNT	CURB AND GUTTER	PV	POINT OF VERTICAL TANGENCY
CY	CUBIC YARD	PVRC	REINFORCED CONCRETE CULVERT PIPE
C & G	CURB AND GUTTER BOX DEPTH	RC	REQUIRE
D	DESIGN HOUR VOLUME	RCPC	REINFORCED CONCRETE PIPE
DIV	DIRECTIONAL DISTRIBUTION	RECD	REQUIRED
DD	DISCHARGE	RES	RESIDENCE OR RESIDENTIAL
DISCH	DITCH GRADE	RHF	RIGHT-HAND FORWARD
DC	DITCH	RHW	RIGHT-WAY
DM	DRAINAGE MANHOLE	R/W	RIGHT-WAY
E	ELEVATION	RR	RAILROAD
EL/ELEV	ELEVATION	R	RIGHT
ENT	ENTRANCE	R	RAILROAD
ESALS	EQUIVALENT SINGLE AXLE LOADS	RT	RIGHT TURN
ESL	EXCAVATION	S	SOUTH
EXC	EXCAVATION BELOW SUBGRADE	SALV	SALVAGED
EX	EXISTING	SAV	SANITARY SEWER
EXST	EXISTING	S	SOUTH
FE	FIELD ENTRANCE	S	SOUTH
FERT	FERTILIZE	SQ	SQUARE
FF	FACE TO FACE	SF	SQUARE FEET
FL	FLOW LINE	SY	SQUARE YARD
FL	FLOW LINE	ST	STATE
FO	FIBER OPTIC	STH	STATE HIGHWAY
F	FULL SUPER ELEVATION	STA	STATION
F	FULL SUPER ELEVATION	SS	STORM SEWER
G	GRADE	S	SUPERELEVATION
G	GRADE	S	SUPERELEVATION
HMA	HOT MIX ASPHALT	TR	TRUCK (PERCENT OF)
HYD	HYDRANT	T	TOP OF CURB
ID	INSIDE DIAMETER	TC	TEMPORARY LIMITED EASEMENT
IN	INVERT PIPE OR PN	T	TOWN
K	PERCENT	TON	TON
LHF	LEFT-HAND FORWARD	T	TOWN
L	LENGTH OF CURVE	V	VARIABLE
LB	POUND	VC	VERTICAL CURVE
LC	LINEAL FOOT	W	WEST
LCB	LINEAL FOOT BEARING	X	EAST GRID COORDINATE
L	LONG CHORD	Y	NORTH GRID COORDINATE
LN	LANE	YD	YARD

GENERAL NOTES

ELEVATIONS SHOWN ON THE PLAN ARE REFERENCED TO USGS DATUM.
 THE LOCATION OF EXISTING AND PROPOSED UTILITY INSTALLATIONS AS SHOWN ON THE PLANS ARE APPROXIMATE. THERE MAY BE OTHER UTILITY INSTALLATIONS WITHIN THE PROJECT AREA THAT ARE NOT SHOWN.
 NO TREES OR SHRUBS ARE TO BE REMOVED WITHOUT THE APPROVAL OF THE ENGINEER.
 THE EXACT LOCATION OF THE EROSION CONTROL DEVICES SHALL BE DETERMINED IN THE FIELD BY THE ENGINEER.
 DISTURBED AREAS WITHIN THE RIGHT-OF-WAY, EXCEPT THE AREAS WITHIN THE FINISHED SHOULDER POINTS, SHALL BE SALVAGED, TOPSOILED, FERTILIZED, SEEDED AND MULCHED OR SOODED BEARINGS SHOWN ON THE PLANS ARE COUNTY BEARINGS TO THE NEAREST SECOND.
 THE LOCATION OF THE DRIVEWAYS WILL BE DETERMINED BY THE ENGINEER.
 SIGN PLATE DETAILS SHALL BE IN ACCORDANCE WITH THE FEDERAL HIGHWAY ADMINISTRATION "MANUAL OF UNIFORM TRAFFIC CONTROL DEVICES" UNLESS OTHERWISE PROVIDED FOR IN THE PLAN.
 CURVE DATA IS BASED ON THE ARC DEFINITION.
 SEED MIXTURE NO. 20 SHALL BE USED THROUGHOUT THE PROJECT.
 PRIOR TO CONSTRUCTION, THE CONTRACTOR SHALL CONTACT THE COUNTY LAND SURVEYOR CONCERNING MONUMENT AND PROPERTY CORNER PRESERVATION, LANDMARK REFERENCE MONUMENTS SHALL BE PERPETUATED BY THE COUNTY SURVEYOR.

RADIUS DIMENSIONS ARE SHOWN TO FLAGLINE OF CURB & CUTTER OR EDGE OF PAVEMENT.
 THE EXACT NUMBER, LOCATION AND SPACING OF ALL SIGNS AND DEVICES SHALL BE ADJUSTED TO FIT FIELD CONDITIONS.

6-INCH ASPHALTIC SURFACE SPECIAL SHALL BE CONSTRUCTED WITH A 2-INCH UPPER LAYER AND TWO LOWER LAYERS THAT ARE BOTH 2-INCH

UTILITIES

HUMP RIVER ELECTRIC COOPERATIVE
 MARK LEWIS
 1102 W. 9TH STREET N.
 LADYSMITH, WI 54848
 OFFICE: 715-532-5354
 HOME: 715-532-5325
 HLEW@RREC.COM

CENTURYLINK COMMUNICATIONS
 JIM ARGOLLETTE
 20 S WILSON AVENUE
 RICE LAKE, WI 54868
 OFFICE: 715-482-5868
 J.ARGOLLETTE@CENTURYLINK.NET



Dial 800 or (800)242-8511
 www.DiggersHotline.com

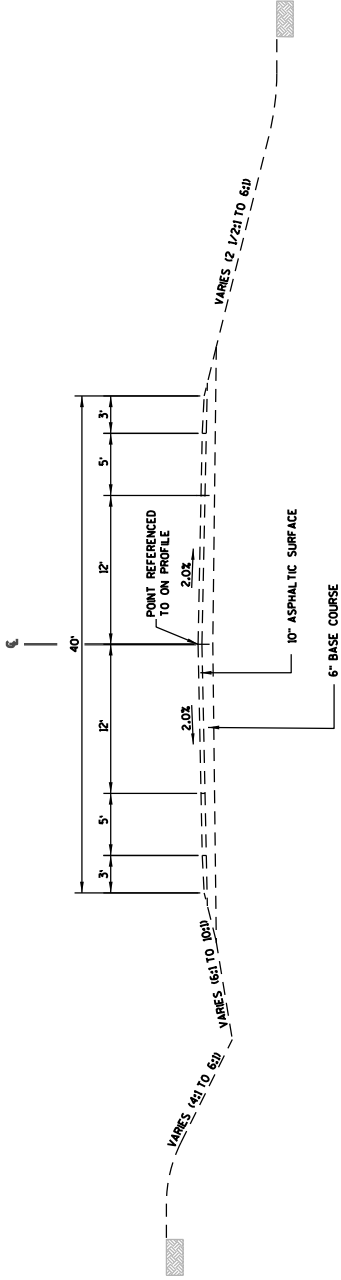
Addendum No. 1
 ID 8180-02-70
 Revised Sheet 2
 May 6, 2015

DESIGN CONTACT

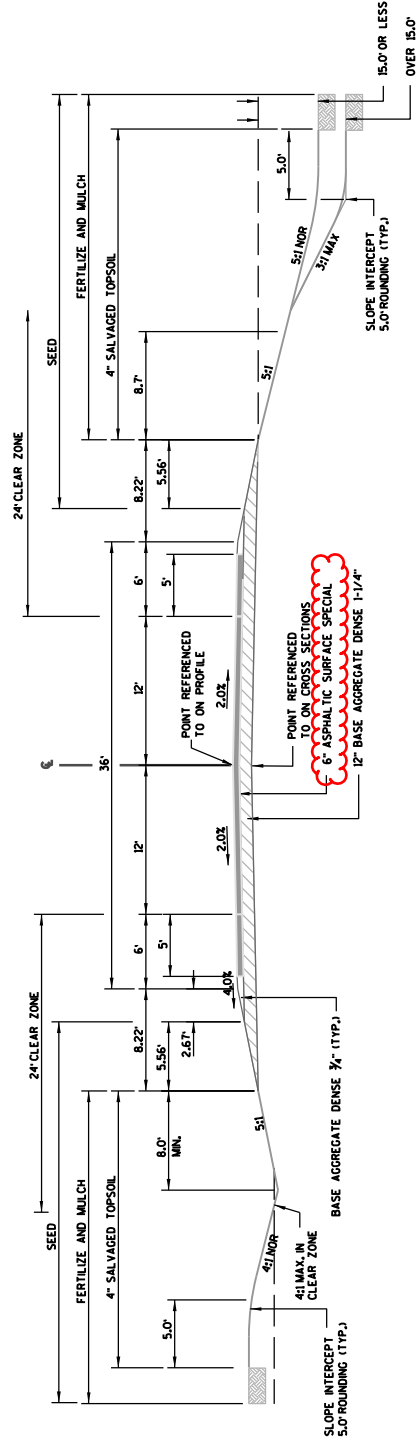
FLEMMING AND ASSOCIATES, INC.
 6575 HASTINGS WAY
 SUITE 100
 EAU CLAIRE, WI 54703-0474
 ATTENTION: MATT GUNDRY
 PHONE: 715-832-8400

W.D.N.R. CONTACT

DEPARTMENT OF NATURAL RESOURCES
 WEST CENTRAL REGION
 810 N. MAPLE STREET
 SPOONER, WI 54801
 ATTENTION: AMY CRONK
 PHONE: 715-635-4229



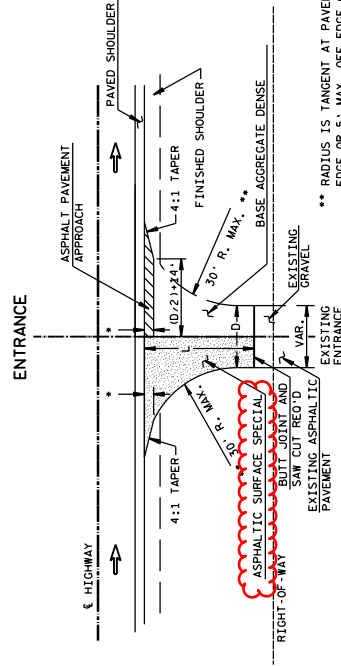
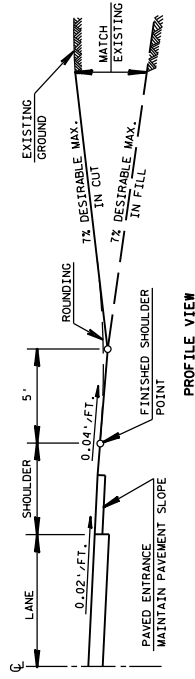
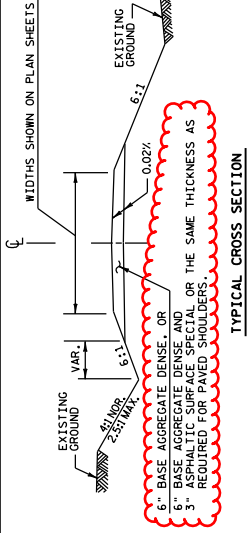
EXISTING TYPICAL SECTION - STH 27



FINISHED TYPICAL SECTION - STH 27

STA 3+00 TO STA 9+37.47
STA 10+62.53 TO STA 16+50

Addendum No. 1
ID 8180-02-70
Revised Sheet 3
May 6, 2015



L=VARIABLE, EXACT LENGTH TO BE DETERMINED IN THE FIELD BY THE ENGINEER. BLEND BACK ON THE ENTRANCE FAR ENOUGH TO GET A SMOOTH PROFILE.
D=DRIVEWAY WIDTH.
D-20 TYP. (PE'S & FE'S) (16'-MIN.-24'-MAX.)

** RADIUS IS TANGENT AT PAVED SHOULDER EDGE OR 5' MAX. OFF EDGE OF MAIN LINE PAVEMENT WHICH EVER IS LESS.
* 3' MAX. OR TO FINISHED SHOULDER WHICH EVER IS LESS.

Addendum No. 1
ID 8180-02-70
Revised Sheet 4
May 6, 2015

RURAL DRIVEWAY INTERSECTION DETAIL
(PE'S, FE'S & CE'S)
(FOR NEW CONSTRUCTION)

CONSTRUCTION DETAILS

COUNTY: RUSK

HWY: STH 27

PROJECT NO: 8180-02-70

SHEET 4

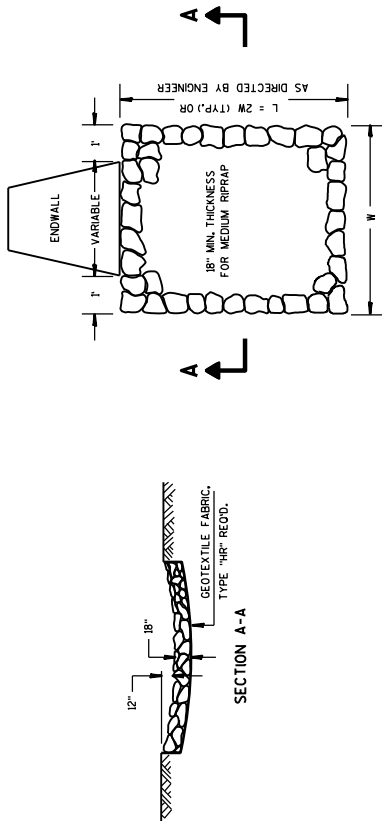
WISDOT/CADD'S SHEET 42

PLOT SCALE: 1" = 100'

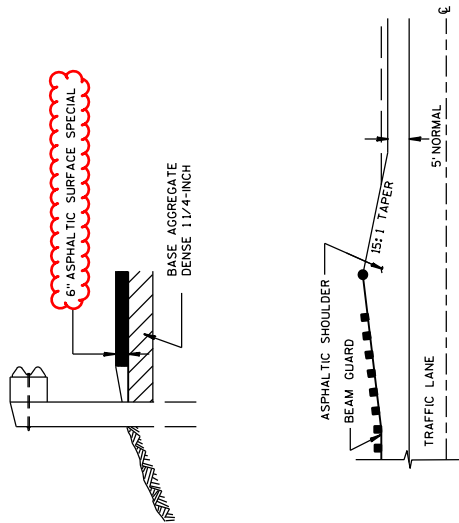
PLOT NAME: **...D:\otuser...

PLOT DATE: 5/4/2015

FILE NAME: F:\Drow\ngs\2012-122\0001\2101.dgn



MEDIUM RIPRAP TREATMENT AT CULVERTS



SCHEDULE OF ITEMS

REVISED:

CONTRACT:
20150512046

PROJECT(S):
1580-09-73
8180-02-70

FEDERAL ID(S):
WISC 2015014
WISC 2015018

CONTRACTOR : _____

LINE NO	ITEM DESCRIPTION	APPROX. QUANTITY AND UNITS	UNIT PRICE		BID AMOUNT	
			DOLLARS	CTS	DOLLARS	CTS

SECTION 0001 Contract Items

0010	201.0105 Clearing	12.000 STA	.		.	
0020	201.0205 Grubbing	12.000 STA	.		.	
0030	203.0100 Removing Small Pipe Culverts	4.000 EACH	.		.	
0040	203.0210.S Abatement of Asbestos Containing Material (structure) 01. B-54-079	LUMP	LUMP		.	
0050	203.0600.S Removing Old Structure Over Waterway With Minimal Debris (station) 01. 10+00	LUMP	LUMP		.	
0060	204.0100 Removing Pavement	210.000 SY	.		.	
0070	204.0110 Removing Asphaltic Surface	4,645.000 SY	.		.	
0080	204.0150 Removing Curb & Gutter	90.000 LF	.		.	
0090	204.0155 Removing Concrete Sidewalk	50.000 SY	.		.	

SCHEDULE OF ITEMS

REVISED:

CONTRACT:
20150512046PROJECT(S):
1580-09-73
8180-02-70FEDERAL ID(S):
WISC 2015014
WISC 2015018

CONTRACTOR : _____

LINE NO	ITEM DESCRIPTION	APPROX. QUANTITY AND UNITS	UNIT PRICE		BID AMOUNT	
			DOLLARS	CTS	DOLLARS	CTS
0100	205.0100 Excavation Common	560.000 CY	.		.	
0110	206.1000 Excavation for Structures Bridges (structure) 01. B-54-0120	LUMP	LUMP		.	
0120	208.1100 Select Borrow	5,180.000 CY	.		.	
0130	210.0100 Backfill Structure	290.000 CY	.		.	
0140	213.0100 Finishing Roadway (project) 01. 1580-09-73	1.000 EACH	.		.	
0150	213.0100 Finishing Roadway (project) 02. 8180-02-70	1.000 EACH	.		.	
0160	305.0110 Base Aggregate Dense 3/4-Inch	230.000 TON	.		.	
0170	305.0120 Base Aggregate Dense 1 1/4-Inch	4,350.000 TON	.		.	
0180	415.0410 Concrete Pavement Approach Slab	130.000 SY	.		.	
0190	415.1410 Concrete Pavement Approach Slab HES	210.000 SY	.		.	

SCHEDULE OF ITEMS

REVISED:

CONTRACT:
20150512046PROJECT(S):
1580-09-73
8180-02-70FEDERAL ID(S):
WISC 2015014
WISC 2015018

CONTRACTOR : _____

LINE NO	ITEM DESCRIPTION	APPROX. QUANTITY AND UNITS	UNIT PRICE		BID AMOUNT	
			DOLLARS	CTS	DOLLARS	CTS
0200	416.0620 Drilled Dowel Bars	78.000 EACH	.		.	
0210	416.1010 Concrete Surface Drains	22.000 CY	.		.	
0230	455.0605 Tack Coat	490.000 GAL	.		.	
0250	460.2000 Incentive Density HMA Pavement	1,040.000 DOL	1.00000		1040.00	
0260	465.0315 Asphaltic Flumes	20.000 SY	.		.	
0270	502.0100 Concrete Masonry Bridges	629.000 CY	.		.	
0280	502.3100 Expansion Device (structure) 01. B-54-0065	LUMP	LUMP		.	
0290	502.3200 Protective Surface Treatment	700.000 SY	.		.	
0300	502.3210.S Pigmented Protective Surface Treatment	575.000 SY	.		.	
0310	502.5005 Masonry Anchors Type L No. 5 Bars	114.000 EACH	.		.	
0320	505.0405 Bar Steel Reinforcement HS Bridges	6,000.000 LB	.		.	

SCHEDULE OF ITEMS

REVISED:

CONTRACT:
20150512046PROJECT(S):
1580-09-73
8180-02-70FEDERAL ID(S):
WISC 2015014
WISC 2015018

CONTRACTOR : _____

LINE NO	ITEM DESCRIPTION	APPROX. QUANTITY AND UNITS	UNIT PRICE		BID AMOUNT	
			DOLLARS	CTS	DOLLARS	CTS
0330	505.0605 Bar Steel Reinforcement HS Coated Bridges	112,430.000 LB	.		.	
0340	505.0904 Bar Couplers No. 4	20.000 EACH	.		.	
0350	505.0905 Bar Couplers No. 5	12.000 EACH	.		.	
0360	509.0301 Preparation Decks Type 1	1.000 SY	.		.	
0370	509.0302 Preparation Decks Type 2	1.000 SY	.		.	
0380	509.1000 Joint Repair	50.000 SY	.		.	
0390	509.1500 Concrete Surface Repair	200.000 SF	.		.	
0400	509.2500 Concrete Masonry Overlay Decks	15.000 CY	.		.	
0410	509.5100.S Polymer Overlay	2,325.000 SY	.		.	
0420	509.9020.S Epoxy Crack Sealing	40.000 LF	.		.	
0430	509.9050.S Cleaning Parapets	815.000 LF	.		.	

SCHEDULE OF ITEMS

REVISED:

CONTRACT:
20150512046PROJECT(S):
1580-09-73
8180-02-70FEDERAL ID(S):
WISC 2015014
WISC 2015018

CONTRACTOR : _____

LINE NO	ITEM DESCRIPTION	APPROX. QUANTITY AND UNITS	UNIT PRICE		BID AMOUNT	
			DOLLARS	CTS	DOLLARS	CTS
0440	514.0900 Adjusting Floor Drains	2.000 EACH	.		.	
0450	516.0500 Rubberized Membrane Waterproofing	22.000 SY	.		.	
0460	521.0124 Culvert Pipe Corrugated Steel 24-Inch	148.000 LF	.		.	
0470	521.1024 Apron Endwalls for Culvert Pipe Steel 24-Inch	8.000 EACH	.		.	
0480	522.0136 Culvert Pipe Reinforced Concrete Class III 36-Inch	164.000 LF	.		.	
0490	522.1036 Apron Endwalls for Culvert Pipe Reinforced Concrete 36-Inch	4.000 EACH	.		.	
0500	550.1100 Piling Steel HP 10-Inch X 42 Lb	2,700.000 LF	.		.	
0510	601.0411 Concrete Curb & Gutter 30-Inch Type D	90.000 LF	.		.	
0520	602.0405 Concrete Sidewalk 4-Inch	440.000 SF	.		.	
0530	603.8000 Concrete Barrier Temporary Precast Delivered	1,200.000 LF	.		.	

SCHEDULE OF ITEMS

REVISED:

CONTRACT:
20150512046PROJECT(S):
1580-09-73
8180-02-70FEDERAL ID(S):
WISC 2015014
WISC 2015018

CONTRACTOR : _____

LINE NO	ITEM DESCRIPTION	APPROX. QUANTITY AND UNITS	UNIT PRICE		BID AMOUNT	
			DOLLARS	CTS	DOLLARS	CTS
0540	603.8125 Concrete Barrier Temporary Precast Installed	2,400.000 LF	.		.	
0550	606.0200 Riprap Medium	48.000 CY	.		.	
0560	606.0300 Riprap Heavy	590.000 CY	.		.	
0570	612.0406 Pipe Underdrain Wrapped 6-Inch	180.000 LF	.		.	
0580	614.0150 Anchor Assemblies for Steel Plate Beam Guard	4.000 EACH	.		.	
0590	614.0920 Salvaged Rail	390.000 LF	.		.	
0600	614.2300 MGS Guardrail 3	150.000 LF	.		.	
0610	614.2500 MGS Thrie Beam Transition	158.000 LF	.		.	
0620	614.2610 MGS Guardrail Terminal EAT	4.000 EACH	.		.	
0630	618.0100 Maintenance And Repair of Haul Roads (project) 01. 1580-09-73	1.000 EACH	.		.	

SCHEDULE OF ITEMS

REVISED:

CONTRACT:
20150512046PROJECT(S):
1580-09-73
8180-02-70FEDERAL ID(S):
WISC 2015014
WISC 2015018

CONTRACTOR : _____

LINE NO	ITEM DESCRIPTION	APPROX. QUANTITY AND UNITS	UNIT PRICE		BID AMOUNT	
			DOLLARS	CTS	DOLLARS	CTS
0640	618.0100 Maintenance And Repair of Haul Roads (project) 02. 8180-02-70	1.000 EACH	.		.	
0650	619.1000 Mobilization	1.000 EACH	.		.	
0660	625.0105 Topsoil	5.000 CY	.		.	
0670	625.0500 Salvaged Topsoil	5,900.000 SY	.		.	
0680	627.0200 Mulching	6,020.000 SY	.		.	
0690	628.1504 Silt Fence	1,080.000 LF	.		.	
0700	628.1520 Silt Fence Maintenance	1,080.000 LF	.		.	
0710	628.1905 Mobilizations Erosion Control	4.000 EACH	.		.	
0720	628.1910 Mobilizations Emergency Erosion Control	3.000 EACH	.		.	
0730	628.2004 Erosion Mat Class I Type B	1,550.000 SY	.		.	

SCHEDULE OF ITEMS

REVISED:

CONTRACT:
20150512046PROJECT(S):
1580-09-73
8180-02-70FEDERAL ID(S):
WISC 2015014
WISC 2015018

CONTRACTOR : _____

LINE NO	ITEM DESCRIPTION	APPROX. QUANTITY AND UNITS	UNIT PRICE		BID AMOUNT	
			DOLLARS	CTS	DOLLARS	CTS
0740	628.6005 Turbidity Barriers	400.000 SY	.		.	
0750	628.7015 Inlet Protection Type C	6.000 EACH	.		.	
0760	628.7504 Temporary Ditch Checks	480.000 LF	.		.	
0770	629.0210 Fertilizer Type B	4.000 CWT	.		.	
0780	630.0120 Seeding Mixture No. 20	130.000 LB	.		.	
0790	630.0140 Seeding Mixture No. 40	2.000 LB	.		.	
0800	633.5200 Markers Culvert End	2.000 EACH	.		.	
0810	634.0616 Posts Wood 4x6-Inch X 16-FT	3.000 EACH	.		.	
0820	634.0618 Posts Wood 4x6-Inch X 18-FT	2.000 EACH	.		.	
0830	637.2210 Signs Type II Reflective H	20.000 SF	.		.	
0840	637.2230 Signs Type II Reflective F	12.000 SF	.		.	

SCHEDULE OF ITEMS

REVISED:

CONTRACT:
20150512046PROJECT(S):
1580-09-73
8180-02-70FEDERAL ID(S):
WISC 2015014
WISC 2015018

CONTRACTOR : _____

LINE NO	ITEM DESCRIPTION	APPROX. QUANTITY AND UNITS	UNIT PRICE		BID AMOUNT	
			DOLLARS	CTS	DOLLARS	CTS
0850	638.2602 Removing Signs Type II	7.000 EACH	.		.	
0860	638.3000 Removing Small Sign Supports	7.000 EACH	.		.	
0870	642.5401 Field Office Type D	1.000 EACH	.		.	
0880	643.0100 Traffic Control (project) 01. 1580-09-73	1.000 EACH	.		.	
0890	643.0100 Traffic Control (project) 02. 8180-02-70	1.000 EACH	.		.	
0900	643.0300 Traffic Control Drums	470.000 DAY	.		.	
0910	643.0420 Traffic Control Barricades Type III	1,685.000 DAY	.		.	
0920	643.0705 Traffic Control Warning Lights Type A	2,850.000 DAY	.		.	
0930	643.0715 Traffic Control Warning Lights Type C	490.000 DAY	.		.	
0940	643.0900 Traffic Control Signs	2,525.000 DAY	.		.	

SCHEDULE OF ITEMS

REVISED:

CONTRACT:
20150512046PROJECT(S):
1580-09-73
8180-02-70FEDERAL ID(S):
WISC 2015014
WISC 2015018

CONTRACTOR : _____

LINE NO	ITEM DESCRIPTION	APPROX. QUANTITY AND UNITS	UNIT PRICE		BID AMOUNT	
			DOLLARS	CTS	DOLLARS	CTS
0950	643.0920 Traffic Control Covering Signs Type II	6.000 EACH	.		.	
0960	643.2000 Traffic Control Detour (project) 01. 8180-02-70	1.000 EACH	.		.	
0970	643.3000 Traffic Control Detour Signs	17,625.000 DAY	.		.	
0980	645.0120 Geotextile Fabric Type HR	825.000 SY	.		.	
0990	646.0106 Pavement Marking Epoxy 4-Inch	4,770.000 LF	.		.	
1000	646.0600 Removing Pavement Markings	1,220.000 LF	.		.	
1010	647.0456 Pavement Marking Curb Epoxy	90.000 LF	.		.	
1020	648.0100 Locating No-Passing Zones	0.260 MI	.		.	
1030	649.0400 Temporary Pavement Marking Removable Tape 4-Inch	3,840.000 LF	.		.	
1040	650.4500 Construction Staking Subgrade	1,225.000 LF	.		.	
1050	650.5000 Construction Staking Base	1,225.000 LF	.		.	

SCHEDULE OF ITEMS

REVISED:

CONTRACT:
20150512046PROJECT(S):
1580-09-73
8180-02-70FEDERAL ID(S):
WISC 2015014
WISC 2015018

CONTRACTOR : _____

LINE NO	ITEM DESCRIPTION	APPROX. QUANTITY AND UNITS	UNIT PRICE		BID AMOUNT	
			DOLLARS	CTS	DOLLARS	CTS
1060	650.6000 Construction Staking Pipe Culverts	2.000 EACH	.		.	
1070	650.6500 Construction Staking Structure Layout (structure) 01. B-54-0065	LUMP	LUMP		.	
1080	650.6500 Construction Staking Structure Layout (structure) 02. B-54-0120	LUMP	LUMP		.	
1090	650.9910 Construction Staking Supplemental Control (project) 01. 1580-09-73	LUMP	LUMP		.	
1100	650.9910 Construction Staking Supplemental Control (project) 02. 8180-02-70	LUMP	LUMP		.	
1110	650.9920 Construction Staking Slope Stakes	1,225.000 LF	.		.	
1120	690.0150 Sawing Asphalt	68.000 LF	.		.	
1130	690.0250 Sawing Concrete	222.000 LF	.		.	
1140	715.0415 Incentive Strength Concrete Pavement	500.000 DOL	1.00000		500.00	

SCHEDULE OF ITEMS

REVISED:

CONTRACT:
20150512046

PROJECT(S):
1580-09-73
8180-02-70

FEDERAL ID(S):
WISC 2015014
WISC 2015018

CONTRACTOR : _____

LINE NO	ITEM DESCRIPTION	APPROX. QUANTITY AND UNITS	UNIT PRICE		BID AMOUNT	
			DOLLARS	CTS	DOLLARS	CTS
1150	715.0502 Incentive Strength Concrete Structures	3,774.000 DOL	1.00000		3774.00	
1160	ASP.1T0A On-the-Job Training Apprentice at \$5.00/HR	1,200.000 HRS	5.00000		6000.00	
1170	ASP.1T0G On-the-Job Training Graduate at \$5.00/HR	300.000 HRS	5.00000		1500.00	
1180	SPV.0060 Special 01. Salvaging Dry Hydrant	1.000 EACH	.		.	
1190	SPV.0090 Special 01. Concrete Curb And Gutter Cure And Seal Treatment	90.000 LF	.		.	
1200	SPV.0090 Special 02. Sawing Pavement Deck Preparation Areas	150.000 LF	.		.	
1210	SPV.0165 Special 01. Concrete Sidewalk Cure And Seal Treatment	440.000 SF	.		.	
1220	SPV.0195 Special 01. Asphaltic Surface Special	1,620.000 TON	.		.	
	SECTION 0001 TOTAL				.	
	TOTAL BID				.	