

Work Zone Safety Task Force

Meeting #5

January 22, 2025

Meeting Summary

1. Reviewed Work Zone Crashes
2. Reviewed 2024 Work Zone Inspections
3. Reviewed Activity from the WZSTF
4. Law Enforcement & Speeds
 - a. 2 Pilot projects in 2024
 - b. 3 Projects in 2025 in NW, SW and NE Region
5. Education, Public Awareness & Social Media
 - a. Gas Station PSA is moving forward on I-41 between Appleton and Green Bay
 - b. Work Zone Awareness Week, April 21-25
 - c. Comment: Great logo, is there a way for DOT to print t-shirts for WisDOT staff to wear?
 - d. Comment: Will there still be regional events?
 - i. Yes, the department is working on finalizing locations and dates, will share once available
6. New Products & Technology
 - a. ATMA Pilot – May 2025 with Dane County
 - b. WZDx Local Roads Pilot is ongoing
 - c. Connected Devices in 2025, Spec in 2026
 - d. Digital Speed Reduction System – required on projects starting in 2025
7. Temporary Traffic Control
 - a. Currently developing parameters for design guidance to minimize traffic through work zones (get in-get done-get out). Guidelines will be used in project development to identify Pilot projects for implementation.
 - i. Stephanie Leranth has developed a document regarding full weekend closures that she will share with the group after approved by the region.
 - b. Another project is to prioritize safety for contractors and public by identifying areas of universal improvement for consistency in Wisconsin. Distributed statewide survey to locals and utilities from 10/3/24-11/1/24 sent by the UW System. BTO is looking into training needs.
 - i. The group has completed their task and will no longer meet.
8. Other Topics/Comments
 - a. PCMS during flagging operations
 - i. Joe Schneider mentioned they have used them during flagging operations with site issues (hills)
 - ii. Erin Schwark mentioned there may be some technology out there that the department would be willing to try that would have a worker vest connect to a PCMS and when the flagger was actively out there, the PCMS would be on. If any contractors are interested, reach out to Erin.
 - iii. Matt Grove discussed the option for PCMS and more pay items for flagging.
 - iv. Andi Bill mentioned the LTAP is getting ready for their trainings so if there is anything she can share or help with to send her information.
 - v. Concerns with MASH from a county perspective and contractor perspective

Work Zone Safety Task Force Update

Meeting #5

January 22, 2025
Erin Schwark, PE
WisDOT - BTO



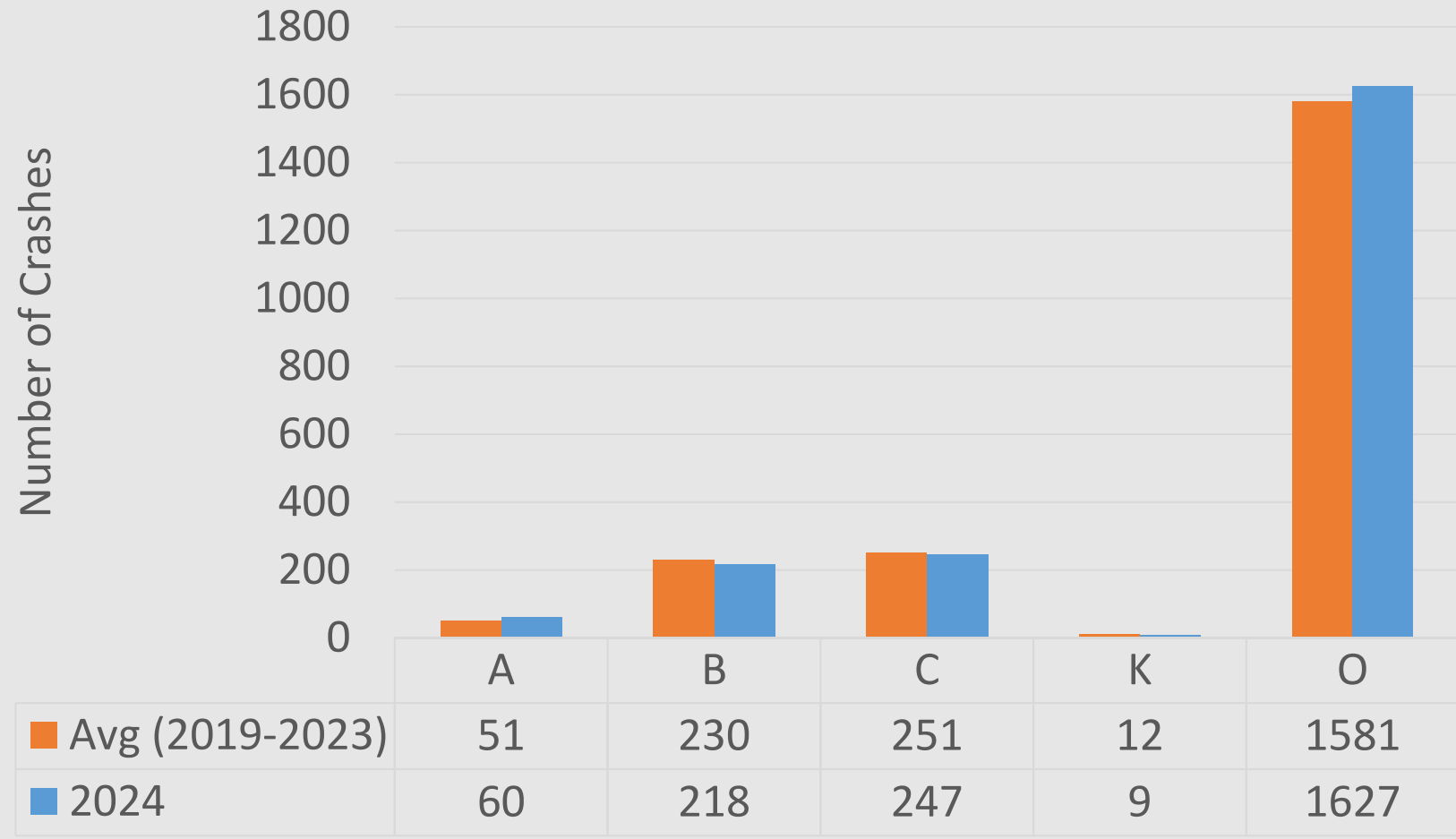
Total Number of WZ Crashes/Year

Year	Total Number of Crashes
2020	1794
2021	2172
2022	2013
2023	2168
2024	2161
Avg (2019-2023)	2124



*2024 Data is Preliminary. Data does not include parking lot or private property crashes.

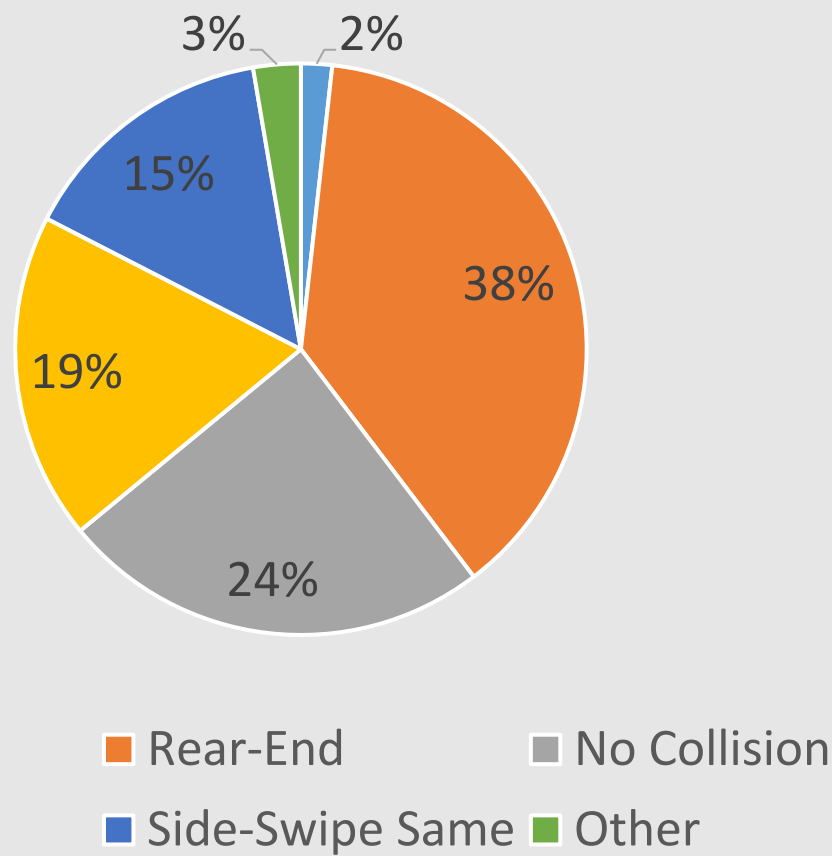
2024 WZ Crash Severity



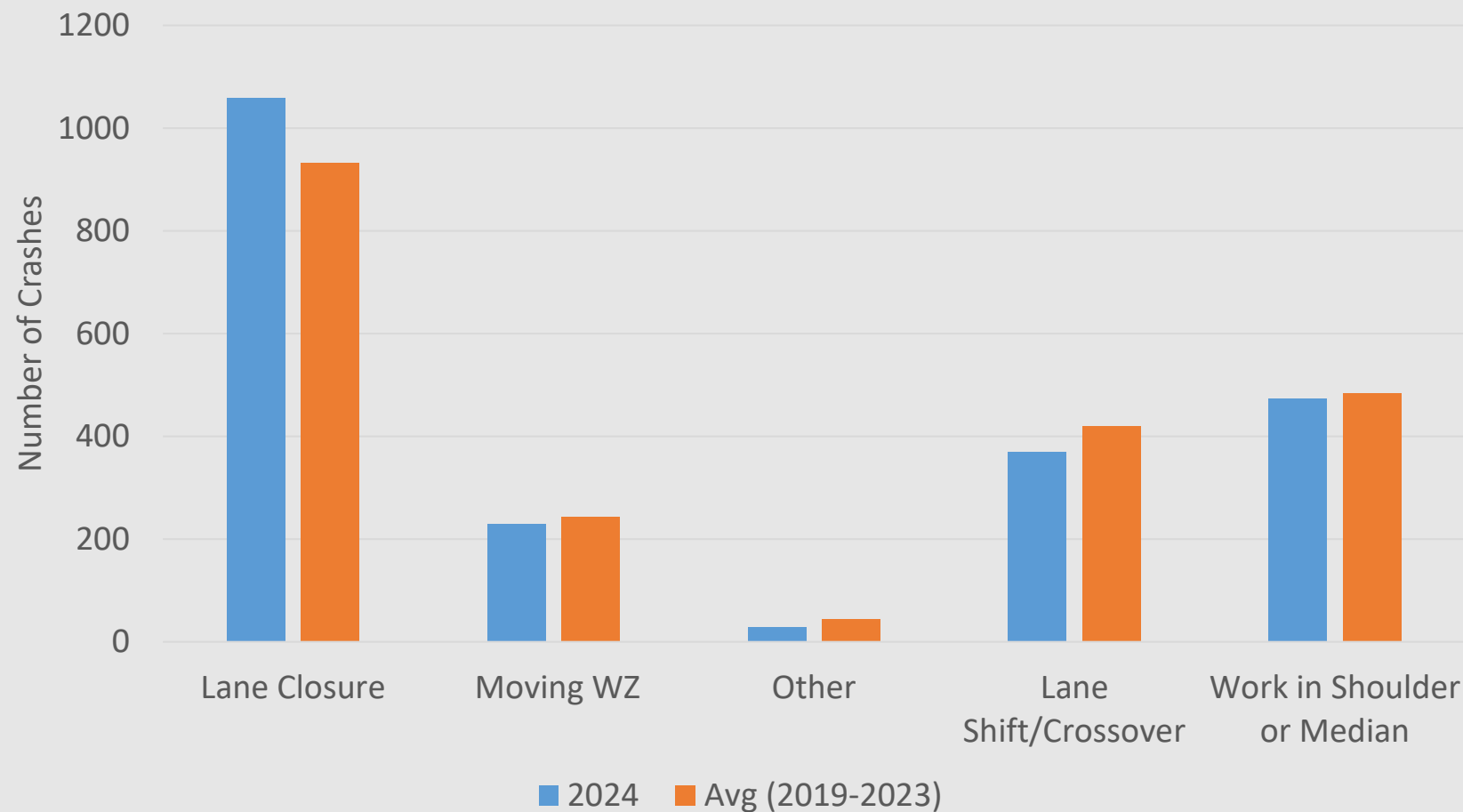
*2024 Data is Preliminary. Data does not include parking lot or private property crashes.

2024 WZ Crashes by Manner of Collision

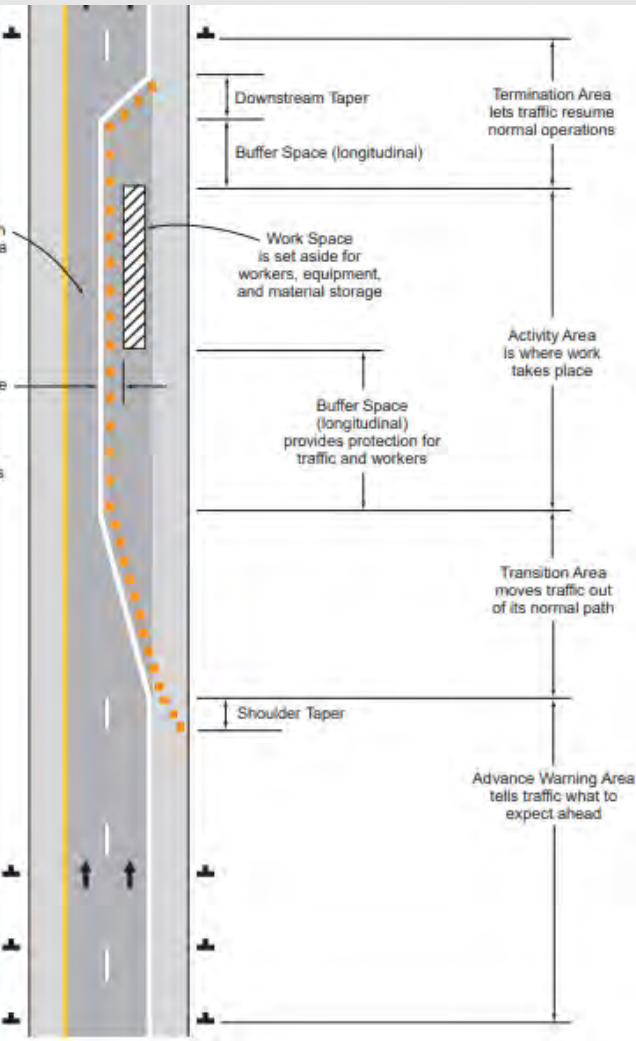
<u>Manner of Collision</u>	<u>19'-23'Avg</u>
Rear-end	36%
No Collision	29%
Angle	16%
Sideswipe Same	14%
Head On	2%
Other	3%



2024 WZ by Type



2024 WZ Crashes by Location



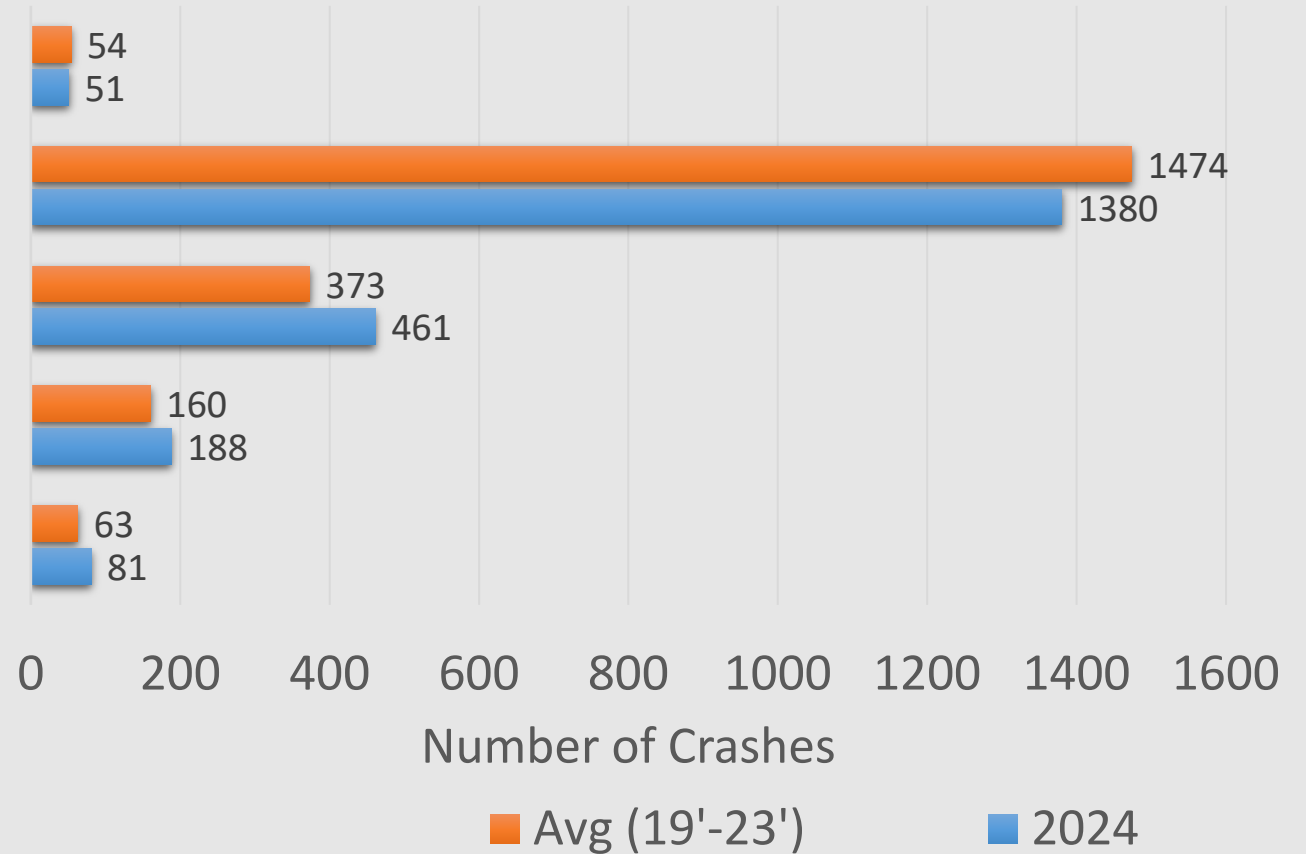
Termination Area

Activity Area

Transition Area

Advance Warning Area

Before Work Zone



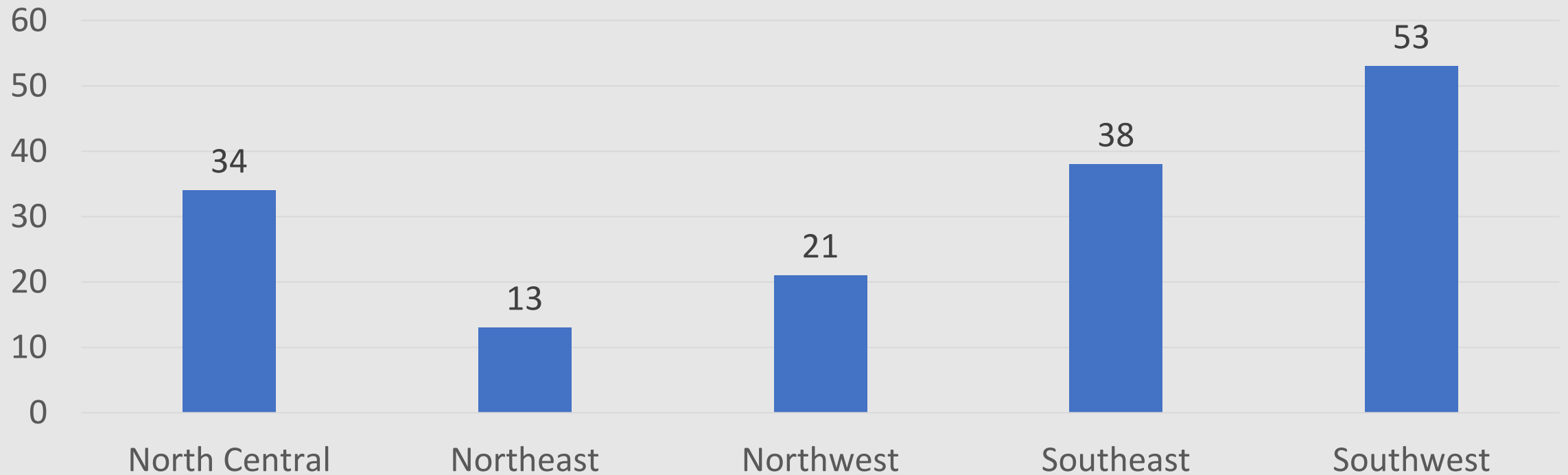
2024 Work Zone Inspection Summary



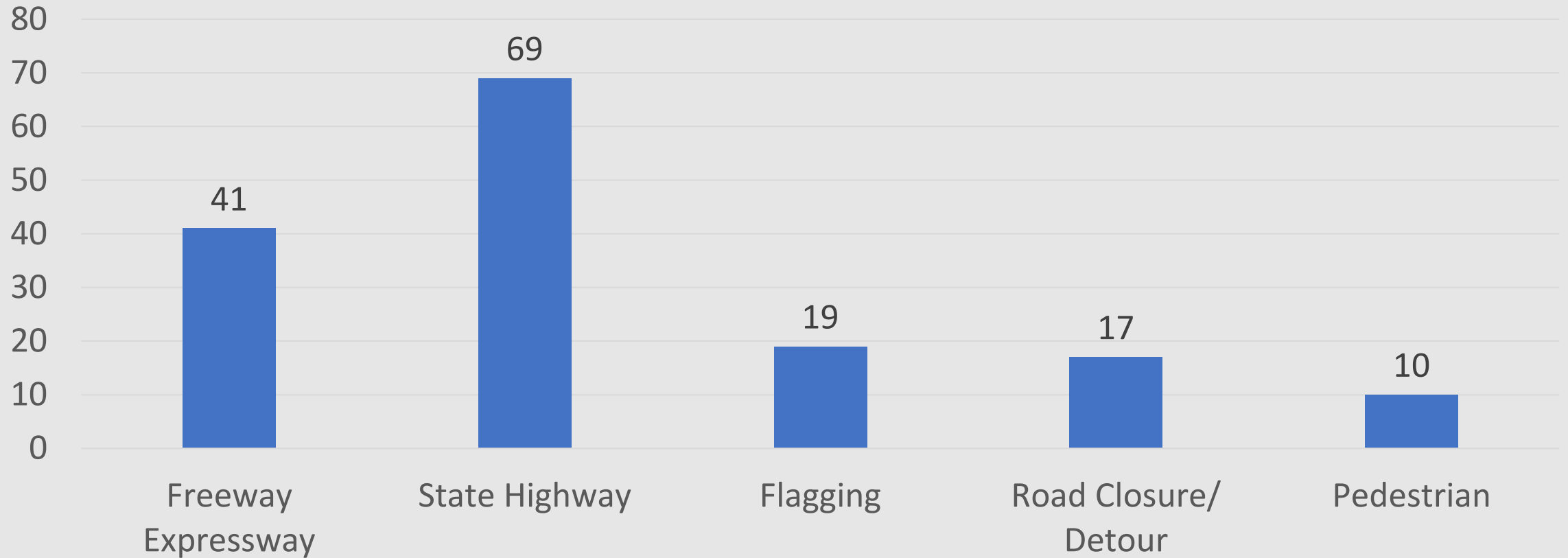
2024 Work Completed By

Work	Total
Contractors	109
Counties	30
Utilities	17
Total	156

2024 Inspections per Region

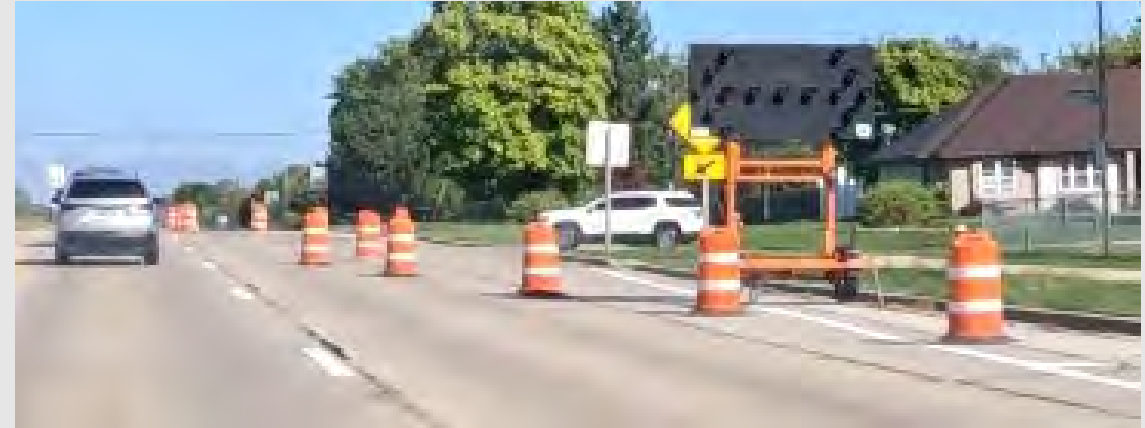


2024 Inspections per Type



Tapers

- Short lane closure tapers
- Missing shoulder closure tapers
- Located in curve



Taper Length

- Lane Closure Taper Lengths:

- Undivided/Non-Freeway/Expressway

- Freeway/Expressway

POSTED SPEED LIMIT PRIOR TO WORK STARTING (MPH)	TAPER LENGTH (12 FT. LANE) (L) FEET
25	125'
30	180'
35	245'
40	320'
45	540'

— L, TAPER —
50 MPH - 600'
55 MPH - 660'
60 MPH - 720'
65 MPH - 780'
70 MPH - 840'

Clear Zone

- Material storage
- Equipment storage
- Concrete Barrier Temporary Precast
 - Don't place material directly on backside
 - Don't place tools on top of or lean them on temporary concrete barrier



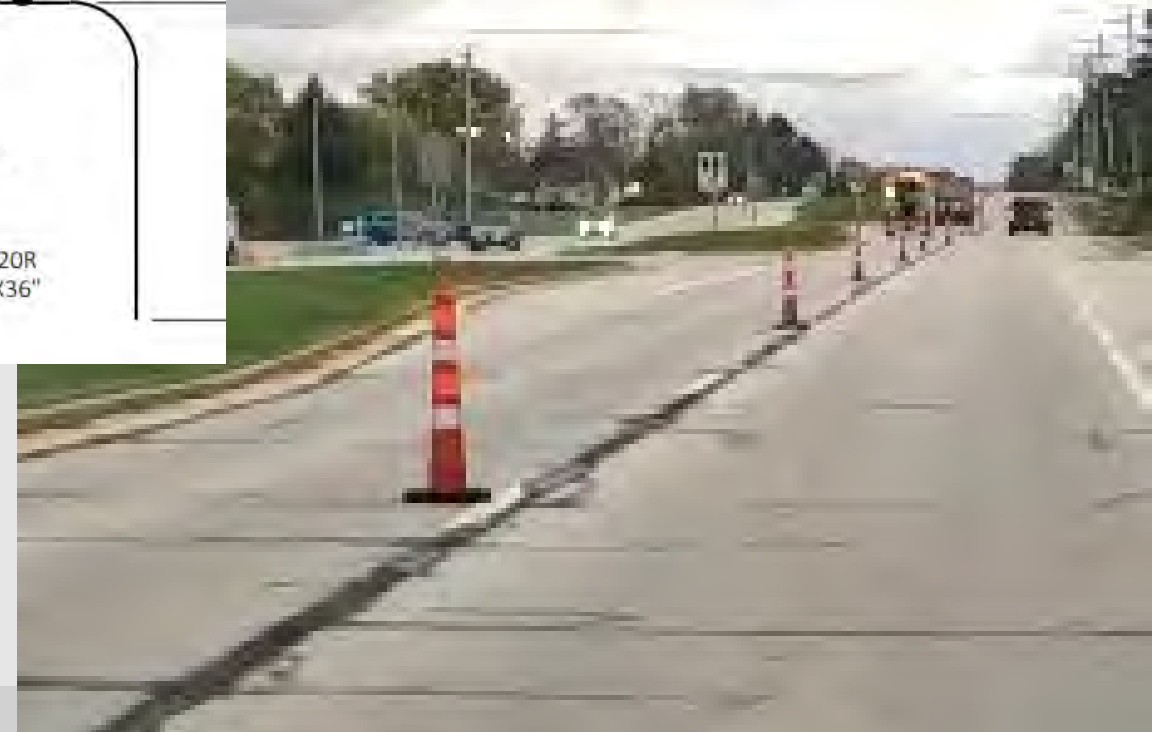
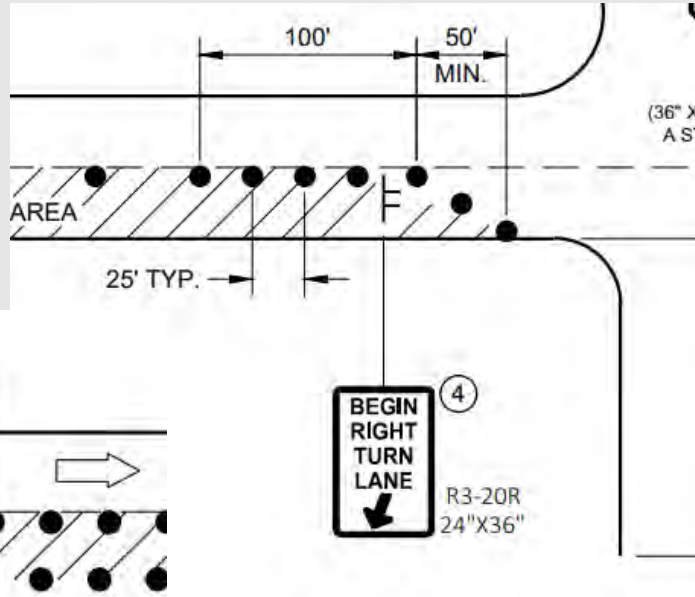
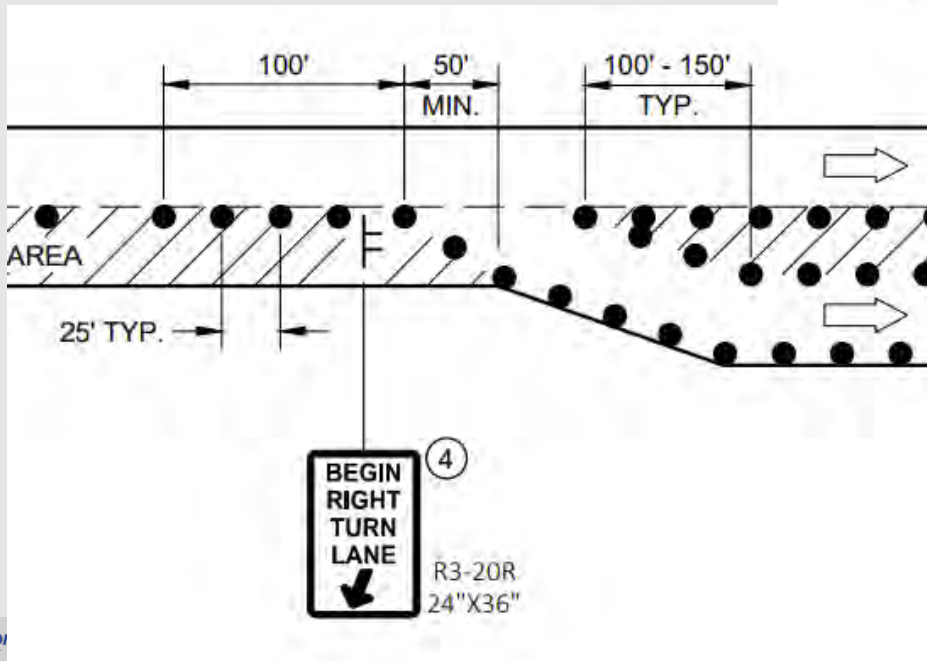
Signs on Type III Barricades

- Local Traffic Only
 - Removed from state sign plate manual
 - Road Closed to Thru Traffic
- Decimals
 - Use fractions instead
 - Comment in plan reviews



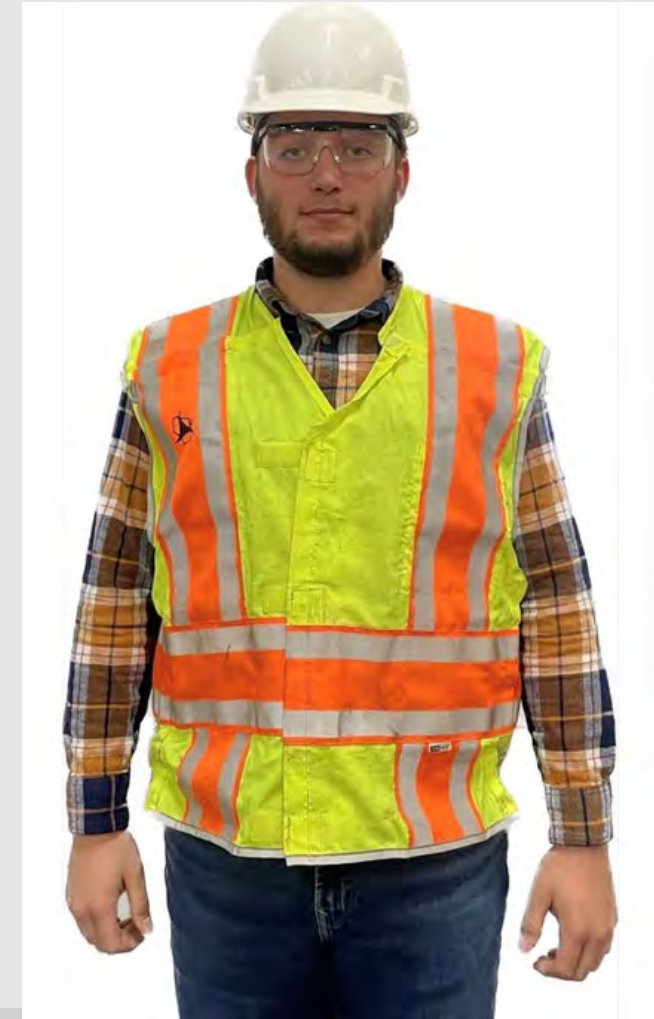
Turn Lanes

- Missing signage
- Device spacing



High Visibility Apparel

- Required by WMUTCD Section 6D.03
 - All workers within the right-of-way who are exposed either to traffic (vehicles using the highway for purposes of travel) or to work vehicles and construction equipment within the TTC zone **shall** wear high-visibility safety apparel that meets the Performance Class 2 or 3 requirements of the ANSI/ISEA .



Flagging

- No escape path
- Flagger not holding paddle
- Back to traffic



Flagging



Temporary Portable Rumble Strips

- Spacing
- Shifting



Temporary Pedestrian Accommodations

- Type II Barricades
- Temporary Curb Ramp slopes
- Don't park equipment/material on open sidewalk
- ¼" max vertical joints
- ½" max horizontal joints



Temporary Pedestrian Accommodations



Work Zone Safety Task Force Resources

- ListServ created for anyone to get updates/participate:
 - <https://www.content.dot.wi.gov/content/lyris/ops-manuals.htm>
- Meeting information shared on WisDOT Website:
 - <https://wisconsindot.gov/Pages/doing-bus/local-gov/traffic-ops/programs/workzone/workzone.aspx>



Law Enforcement and Speeds

- Aerial Speed Enforcement
- 2024
 - 2 pilot projects
 - SW and NW Region
- 2025
 - Implementing on 3 projects
 - SW, NW and NE Region
- Monroe County, I-94 near Oakdale
 - Split lane configuration, 55 mph posted speed limit
 - High Speed = 86 mph
- Eau Claire County, I-94
 - Single lane closure, 60 mph posted speed limit
 - High Speed = 87 mph



Education, Public Awareness and Social Media

- Gas Station Displays - PSA
 - Working with Kwik Trip and Gas Station TV
 - Pilot Project: I-41 Expansion Project
 - 15 to 30 second video
 - Fuel dispenser, in-store radio
 - April – June 2025
 - Gas Stations within 1 mile from the interstate



Work Zone Awareness Week

- April 21-25, 2025
- Theme: "Respect the zone so we all get home"
- <https://www.nwzaw.org/>
- Planning underway



New Products and Technology

- Work Zone Data Exchange (WZDx)
 - WisDOT WZDx Feed
 - Connected Devices (Arrow Board/Start Marker/End Marker)
 - Piloted Connected Devices in 2024
 - Start to see them in more projects this year
 - SMART Grant to bring WZDx to local roads through connected devices
 - Prototype Phase, Project Completion March 2025



New Products and Technology

- Digital Speed Reduction System
 - Piloted in 2024 on 8 projects
 - Start seeing in 2025
 - STSP and SDD Published
- Autonomous Truck Mounted Attenuator (ATMA)
 - SMART Grant with Colorado, Oklahoma and Minnesota DOT
 - Pilot in May 2025 with counties



Temporary Traffic Control

- Minimizing Traffic Through the Work Zone
 - Goal is to reduce exposure to work zones for workers and public
 - Currently looking at parameters and design guidance
 - Guidance:
 - Facility Type
 - Location: Viable detour routes, full closures, longer working hours
 - Construction timeline



Temporary Traffic Control

- Project Design

- Goal: identify areas of improvement for consistency statewide
- Distributed statewide survey polling locals and utilities for how they implement and enforce TCC
- Survey Summary:
 - Indicated there may be some gaps in knowledge both in design and construction
 - Training to locals/utilities
 - BTO looking into training options and resources



Updates impacting WisDOT

- 2023 MUTCD → Wisconsin MUTCD update March 2025
- 23 CFR 630 Updates
 - Subpart J FHWA Safety and Mobility Rule includes changes to frequency and scope of Work Zone Program reviews
 - Subpart K Temporary Traffic Control Devices creates an added emphasis of using positive protection devices in areas where workers are exposed and do not have a means of escape



Work Zone Safety Task Force Open Discussion

- Safety Issues/Concerns
- If an issues is brought up, we will need the following:
 - Someone to volunteer to lead the effort
 - Volunteers to support the effort



Next Meeting

- March 27th, 1 to 2 PM
 - Guest Speaker on a Flagger Set-Up Spreadsheet
- Will be using the listerv moving forward so your calendar invites will be deleted from your calendar and a new invite will be sent before the meeting



Erin Schwark, PE
Statewide Work Zone Operations Engineer
Erin.Schwark@dot.wi.gov
414-313-6841

