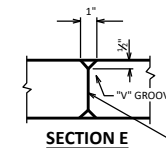


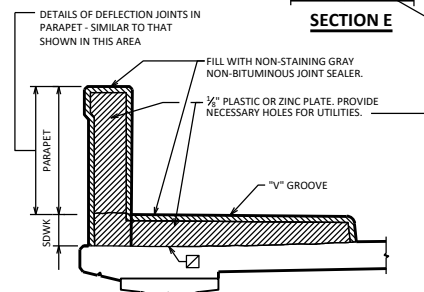
VIEW SHOWING OUTSIDE FACE OF PARAPET & REINF.
(RAILING NOT SHOWN FOR CLARITY)

BILL OF BARS

BAR MARK	QTY	NO. REQ'D.	LENGTH	BEND	BAR SERIES	LOCATION
R501	X			X		PARAPET VERT.
R502	X			X		PARAPET VERT.
S501	X		4'-4"	X		PARAPET VERT.
S502	X			X		PARAPET VERT.



SECTION E



SECTION D

SHOWING DEFLECTION JOINT IN PARAPET OR SIDEWALK USING THE FOLLOWING CRITERIA:

1. GIRDER STRUCTURES AND SLAB STRUCTURES WITH A RAISED SIDEWALK SHOULD HAVE A DEFLECTION JOINT IN THE SIDEWALK AND PARAPET OVER THE PIER. FOR SKEWS GREATER THAN 20-DEG., DETAIL THE JOINT NORMAL TO THE SIDEWALK AND PARAPET WITH THE JOINT APPROX. CENTERED OVER C/L PIER.

IF THERE IS A LIGHT STANDARD AT THE PIER, PLACE A DEFLECTION JOINT APPROX. 4'-0" EACH SIDE OF PIER, WITH NONE DIRECTLY OVER THE PIER.

2. GIRDER STRUCTURES AND SLAB STRUCTURES WITHOUT SIDEWALKS SHOULD HAVE NO DEFLECTION JOINTS IN THE PARAPETS.

NOTE

WHEN PARAPETS ARE POURED CONTINUOUSLY FROM END TO END, THEY SHALL BE SEPARATED AT THE DEFLECTION JOINTS BY A PIECE OF 1/2" ZINC OR PLASTIC PLATE CUT AS SHOWN IN SECTION "D" BY SHADED AREA. IF CONSTRUCTION JOINTS IN PARAPETS ARE USED AT THE DEFLECTION JOINTS, ONE SIDE OF JOINT SHALL BE COATED WITH AN APPROVED LIQUID BOND BREAKER AND PLATE SEPARATORS MAY BE OMITTED.

CLEAN ALL LOOSE MATERIAL ON THE DECK AT THE SIDEWALK LOCATION PRIOR TO SIDEWALK PLACEMENT USING HIGH PRESSURE WATER OR AIR, ENSURING ALL FREE-STANDING WATER IS REMOVED PRIOR TO SIDEWALK PLACEMENT. NEAT CEMENT IS REQUIRED AS PER 509.3.9.2 OF THE STANDARD SPECIFICATIONS UNLESS THE SIDEWALK IS POURED WITHIN 45 DAYS OF COMPLETING THE DECK POUR.

DESIGNER NOTES

THIS STANDARD MEETS MASH TL-2 REQUIREMENTS.

THIS STANDARD MAY BE USED ON STRUCTURES WITH A 45 M.P.H. DESIGN SPEED OR LESS, OR WHEN THE SIDEWALK IS SEPARATED FROM THE ROADWAY BY A PARAPET. THIS STANDARD IS AN ALTERNATIVE TO STANDARD 17.01 WITH NO OVERHANG OR MAY BE USED FOR STRUCTURAL APPROACH SLABS.

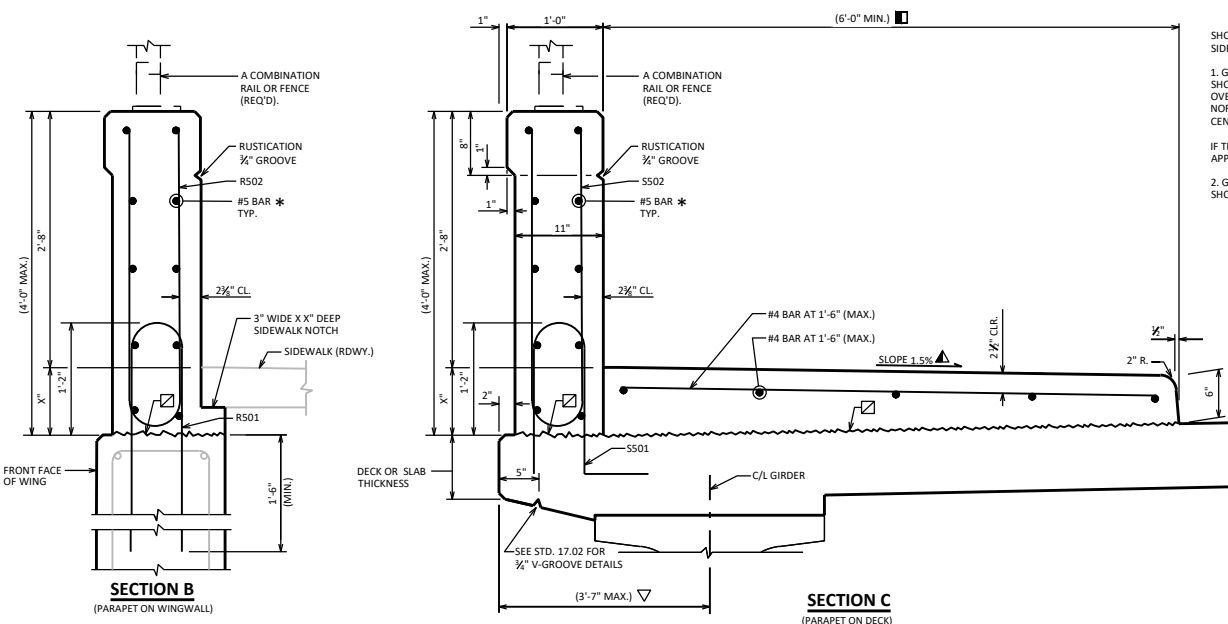
PROVIDE COMBINATION RAIL OR FENCE FOR PEDESTRIAN PROTECTION (3'-6" MINIMUM TOTAL HEIGHT MEASURED FROM TOP OF SIDEWALK).

FOR DEAD LOAD PURPOSES, THE SUPERSTRUCTURE DESIGN SHALL ACCOUNT FOR A MAXIMUM 2% SIDEWALK CROSS SLOPE.

ANCHORAGE TO DECK NOT REQUIRED FOR WIDTHS > 3'-0", EXCEPT ALL SIDEWALK SECTIONS ON TOP OF PAVING BLOCK MUST BE ANCHORED.

FOR EXTREME SIDEWALK WIDTHS AND/OR SUPERELEVATIONS THE DECK MAY BE LEVEL BENEATH THE SIDEWALK (MAINTAIN CONSTANT DECK THICKNESS) TO REDUCE EXCESSIVE SIDEWALK THICKNESS.

PROVIDE ADDITIONAL DECK REINFORCEMENT ACCORDING TO CHAPTER 17 FOR DECK OVERHANGS.



LEGEND

☑ HORIZ. CONST. JOINT-STRIKE OFF AS SHOWN AND LEAVE ROUGH.

* OPTIONAL CONSTRUCTION JOINTS IN THE PARAPETS MAY BE USED. RUN BAR REINF. THRU THE JOINT, LAP LONGIT. BARS A MIN. OF 1'-0". MIN. JOINT SPACING OF 8'-0". DEFINE CONST. JOINT WITH A 3/4" - V" GROOVE.

▲ ±0.5% CONSTRUCTION TOLERANCE IN SIDEWALK CROSS SLOPE. THE SIDEWALK CROSS SLOPE SHALL NOT EXCEED 2% WITHOUT PRIOR APPROVAL FROM THE ENGINEER.

VERTICAL FACE PARAPET 'A' WITH RAISED SIDEWALK



BUREAU OF STRUCTURES

APPROVED: *Laura Shadewald*

DATE: 7-25