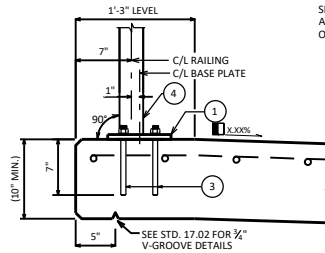
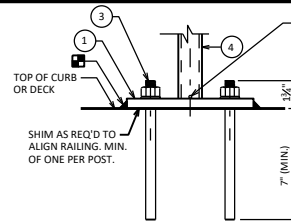


CURB MOUNTED PEDESTRIAN RAILING

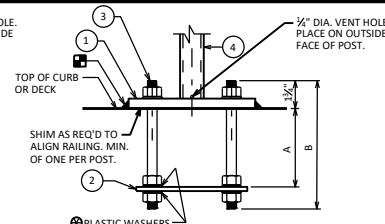
☑ CONST. JOINT-STRIKE OFF AS SHOWN AND LEAVE ROUGH.



DECK MOUNTED PEDESTRIAN RAILING



ADHESIVE ANCHORS



CAST-IN-PLACE ANCHORS

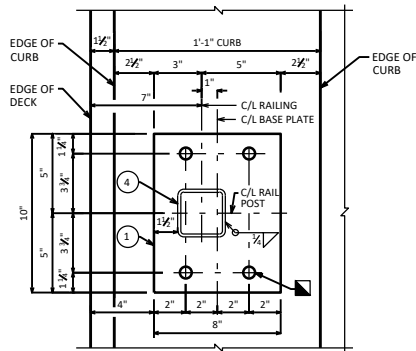
ANCHORAGE FOR RAIL POSTS

NOTE: ANCHOR PLATE NOT REQUIRED WHEN ADHESIVE ANCHORS ARE USED.

APPLICATION	A	B
CURB MOUNTED	7"	10 1/2"
DECK MOUNTED	5 1/2"	9"

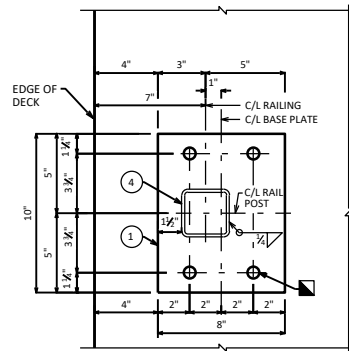
LEGEND

- 1 PLATE 3/8" X 8" X 10" WITH 3/4" HOLES.
- 2 3/4" X 6" X 9 3/4" ANCHOR PLATE WITH 1/8" DIA. HOLES FOR THRD. RODS NO.3.
- 3 3/4" DIA. X 10 1/2" LONG, TYPE 316 STAINLESS STEEL THREADED RODS (MIN. TENSILE STRENGTH = 70 KSI) WITH NUT AND WASHERS OF SAME ALLOY GROUP. ALTERNATIVE ANCHORAGE: CONCRETE ADHESIVE ANCHORS 3/4"-INCH. EMBED 7" IN CONCRETE FOR RAIL POSTS. ADHESIVE ANCHORS SHALL CONFORM TO SECTIONS 502.2.12 AND 502.3.14 OF THE STANDARD SPECIFICATIONS.
- 4 3/4" DIA. X 9" LONG, TYPE 316 STAINLESS STEEL THREADED RODS (MIN. TENSILE STRENGTH = 70 KSI) WITH NUT AND WASHERS OF SAME ALLOY GROUP. ALTERNATIVE ANCHORAGE: CONCRETE ADHESIVE ANCHORS 3/4"-INCH. EMBED 7" IN CONCRETE FOR RAIL POSTS. ADHESIVE ANCHORS SHALL CONFORM TO SECTIONS 502.2.12 AND 502.3.14 OF THE STANDARD SPECIFICATIONS.
- STD. 30.11 4 4" O.D. POST SLEEVE. PLACE VERTICAL WELD TO NO.1. (2.875" O.D. POSTS)
- STD. 30.15 4 STRUCTURAL TUBING 4" X 4" X 3/16". PLACE VERTICAL. WELD TO NO.1.
- STD. 30.17 4 STRUCTURAL TUBING 3" X 3" X 3/16". PLACE VERTICAL. WELD TO NO.1.



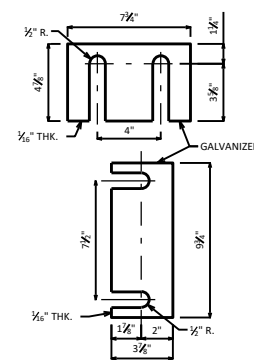
RAIL POST BASE PLATE - CURB MOUNTED

- 1 1/2" DIA. HOLES FOR ADHESIVE ANCHORS
- 3/4" DIA. X 1 1/2" SLOTTED HOLES FOR CAST-IN-PLACE ANCHORS. PLACE SLOTTED HOLES PARALLEL TO C/L RAILING.



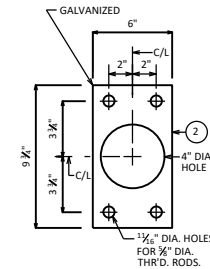
RAIL POST BASE PLATE - DECK MOUNTED

- 1 1/2" DIA. HOLES FOR ADHESIVE ANCHORS
- 3/4" DIA. X 1 1/2" SLOTTED HOLES FOR CAST-IN-PLACE ANCHORS. PLACE SLOTTED HOLES PARALLEL TO C/L RAILING.



SHIM PLATE DETAILS

TWO SHIMS OF EACH SIZE REQUIRED PER POSTS



ANCHOR PLATE

NOTE: ANCHOR PLATE NOT REQUIRED WHEN ADHESIVE ANCHORS ARE USED.

NOTES

BID ITEM SHALL BE "RAILING STEEL PEDESTRIAN TYPE C(1-6)", WHICH SHALL INCLUDE ALL STEEL ITEMS SHOWN.

- ☑ CAULK AROUND PERIMETER OF BASE PLATES, NO. 1, AND FILL BOLT SLOT OPENINGS IN SHIMS AND BASE PLATES WITH NON-STAINING GRAY NON-BITUMINOUS JOINT SEALER.

DESIGNER NOTES

STANDARD 30.17 RAILING DETAILS SHOWN. STANDARDS 30.11 AND 30.15 RAILING DETAILS SIMILAR. SEE TABLE FOR MAXIMUM POST SPACING (WHEN USING THIS STANDARD).

THIS STANDARD MAY BE USED WHEN THE SIDEWALK IS SEPARATED FROM THE ROADWAY BY A TRAFFIC BARRIER. DETAILS SHOWN ON THIS STANDARD PROVIDE PEDESTRIAN RAILING ANCHORAGE DETAILS FOR A REINFORCED CONCRETE CURB AND A REINFORCED CONCRETE DECK. THIS STANDARD MEETS THE REQUIREMENTS OF LRFD 13.8.2 FOR PEDESTRIAN RAILINGS.

REFER TO STANDARD REFERENCES FOR POST CONNECTIONS AND ADDITIONAL DETAILS.

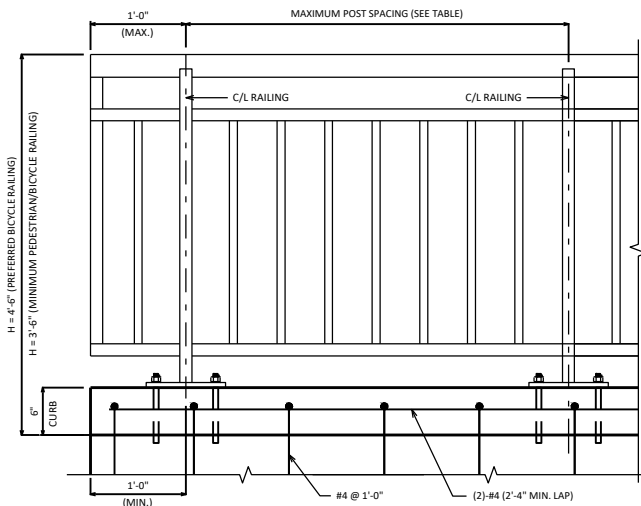
- ☑ FOR DECK MOUNTED APPLICATIONS, SLOPE AWAY FROM EDGE OF DECK. USE CURB MOUNTED DETAILS WHEN SLOPED TOWARDS EDGE OF DECK IS REQUIRED.

DESIGN DATA

CONCRETE STRENGTH, f'_c : 3,500 P.S.I.

REQUIRED CHARACTERISTIC BOND STRESS, $\lambda_{u\text{min}}$: 970 P.S.I. (MIN.)

RAILING HEIGHT "H"	MAXIMUM POST SPACING	STANDARD REFERENCES
≤ 4'-6"	9'-0"	30.17
> 4'-6"	8'-0"	30.11 & 30.15



PARTIAL ELEVATION FOR PEDESTRIAN RAIL ON CURB

(SEE STD. 30.17 FOR RAILING DETAILS. DECK REINFORCEMENT NOT SHOWN FOR CLARITY)

PEDESTRIAN RAILING



**BUREAU OF
STRUCTURES**

APPROVED: *Laura Shadewald*

DATE:
7-25