
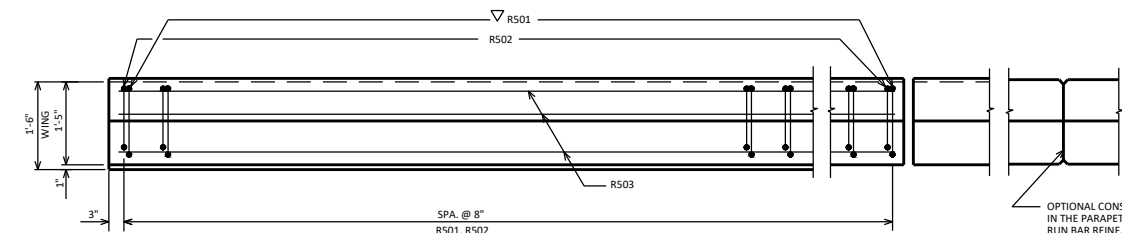
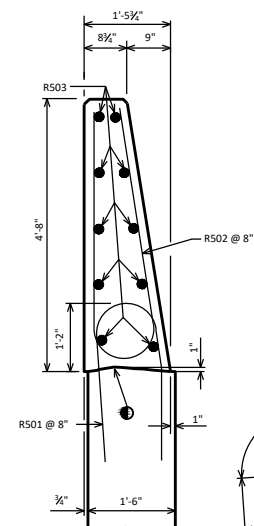


### INSIDE ELEVATION

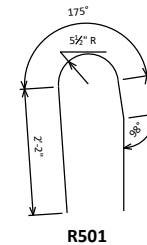
 ROADWAY OPENING OR 2½" MIN. FOR EXPANSION JOINT.  
USE ½" OPENING WITH FILLER FOR A1 ABUTMENTS



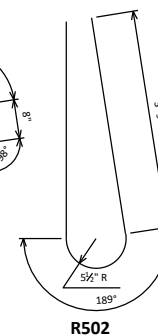
## PLAN



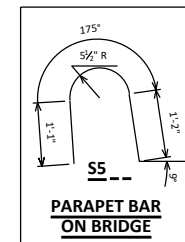
## SECTION A



R501



R502



PARAPET BAR  
ON BRIDGE

## DESIGNER NOTES

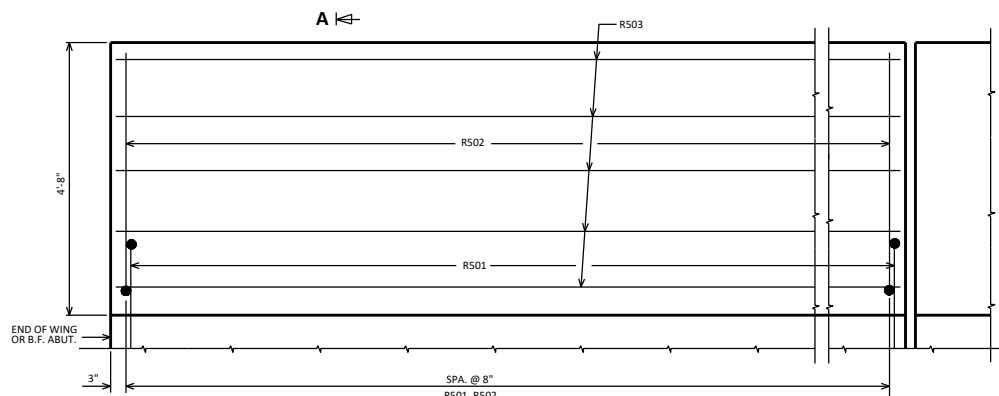
THE 'S6SS' PARAPET IS ONLY TO BE USED IF A 'TYPE S56'  
SINGLE SLOPE CONCRETE ROADWAY BARRIER ADJOINS THE END OF  
THE 'S6SS' PARAPET.

USE A 1'-6" WING WIDTH FOR WINGS PARALLEL TO THE ROADWAY.

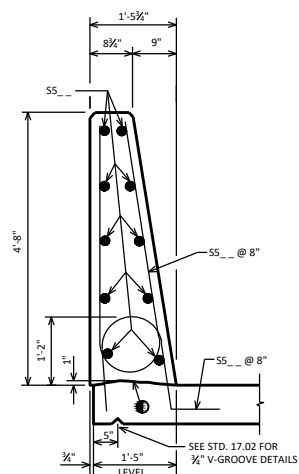
AREA = 5.16 SF  
WEIGHT = 774 LB/FT

CONST. JOINT - STRIKE OFF AS SHOWN.

▽ R501 BARS TO BE TIED TO WING STEEL BEFORE WING IS POURED. DESIGNER MAY ELECT TO USE A R501 BAR IN LIEU OF A S5\_\_ BAR ADJACENT TO THE PAVING NOTCH ON TYPE A1 ABUTMENTS.



### OUTSIDE ELEVATION



SECTION THRU PARAPET ON BRIDGE

## SINGLE SLOPE PARAPET 56SS



**BUREAU OF  
STRUCTURES**

APPROVED: *Laura Shadewald*

DATE:  
7-25