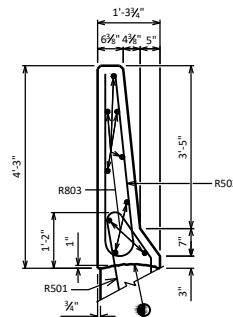
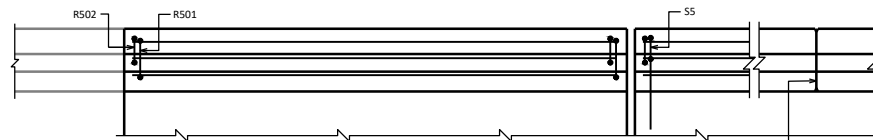


INSIDE ELEVATION

◆ ROADWAY OPENING OR $2\frac{1}{2}$ " MIN. FOR EXPANSION JOINT. USE $\frac{1}{2}$ " OPENING WITH FILLER FOR A1 ABUTMENTS



SECTION A

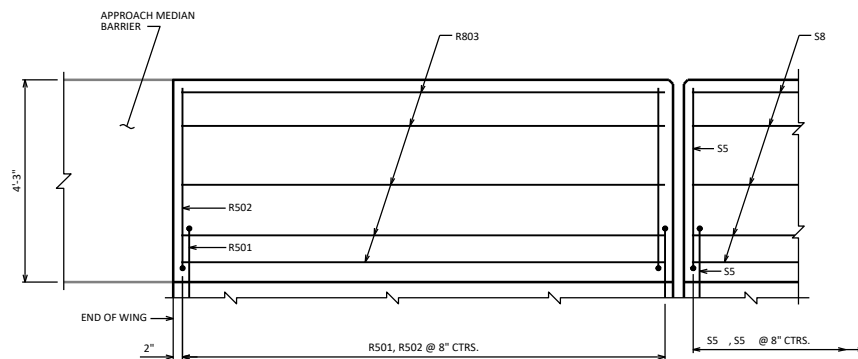


PLAN

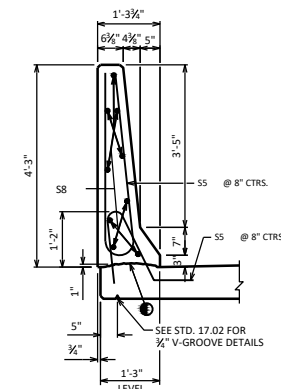
EXPANSION JOINT @ ABUT.
0' SKEW SHOWN. MATCH EXP. JT. OPENING.

FOR TYPE A1 ABUT., USE $\frac{1}{2}$ " FILLER TO TOP OF PARAPET. SEE STD. 12.01.

OPTIONAL CONSTRUCTION JOINTS IN THE PARAPETS MAY BE USED. RUN BAR REINF. THRU THE JOINT. LAP LONGIT. BARS A MIN. OF 3'-5" MIN. JOINT SPACING OF 80'-0". DEFINE CONST. JOINT WITH A $\frac{1}{2}$ " - 'V' GROOVE.



OUTSIDE ELEVATION

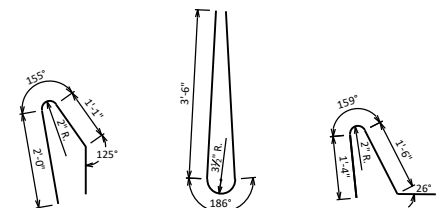


SECTION THRU PARAPET ON BRIDGE

BILL OF BARS

FOR ABUTMENT PARAPETS

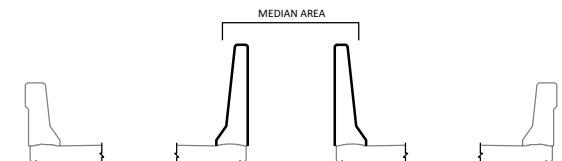
BAR MARK	CONC.	ABUT.	ABUT.	LENGTH	REIN.	LOCATION
R501	X			4'-6"	X	PARAPET VERT.
R502	X			7'-11"	X	PARAPET VERT.
R803	X					PARAPET HORIZ.
S5	X			4'-2"	X	PARAPET VERT.
S5	X			7'-11"	X	PARAPET VERT.
S8	X					PARAPET HORIZ.



R501

R502/S5

S5



SLOPED FACE PARAPET "51F" MAY BE USED IN MEDIAN AREA OF ADJACENT STRUCTURES WHEN HIGHWAY MEDIAN APPROACH CONCRETE BARRIER IS 51" HIGH

① CONST. JOINT - STRIKE OFF AS SHOWN.

A R501 BAR MAY BE USED IN LIEU OF A TYPICAL S5 BAR ADJACENT TO THE PAVING NOTCH ON TYPE A1 ABUTMENTS.
AREA = 3.41 FT.²
WEIGHT = 512 LBS./FT.

SLOPED FACE PARAPET '51F'



APPROVED: *Laura Shadewald*

DATE:
7-25