

NOTES

ALL MATERIAL FOR TYPE "WF" CASTING AND 8" DIA. CONNECTION PIPE, EXCLUDING GRATE HOLD DOWN SCREWS, SHALL BE GRAY IRON CONFORMING TO ASTM A48, CLASS 30.

MATERIAL FOR BRACKETS SHALL CONFORM TO ASTM A36.

ALTERNATE BRACKETS ARE NOT ALLOWED.

ALL MATERIAL FOR FLOOR DRAINS TO BE INCLUDED IN THE BID ITEM "FLOOR DRAINS TYPE WF".

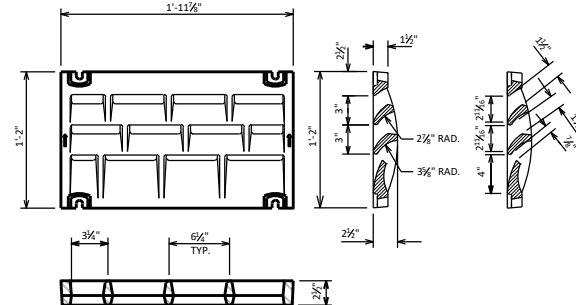
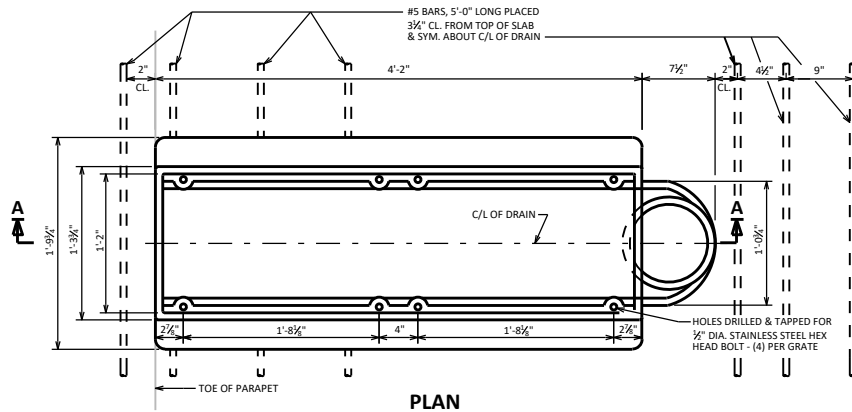
ALL MATERIAL FOR DOWNSPOUTS, DOWNSPOUT CONNECTIONS, AND BRACKETS TO BE INCLUDED IN THE BID ITEM "DOWNSPOUT 8-INCH".

- 8" DIA. DOWNSPOUTS SHALL BE REINFORCED THERMOSETTING RESIN PIPE (RTRP).
- TRANSVERSE & LONGITUDINAL SLAB BAR REINFORCEMENT TO BE CUT A MAXIMUM OF 1" CLEAR FROM DRAIN FRAME. DISPLACE BARS WHERE POSSIBLE.

DESIGNER NOTES

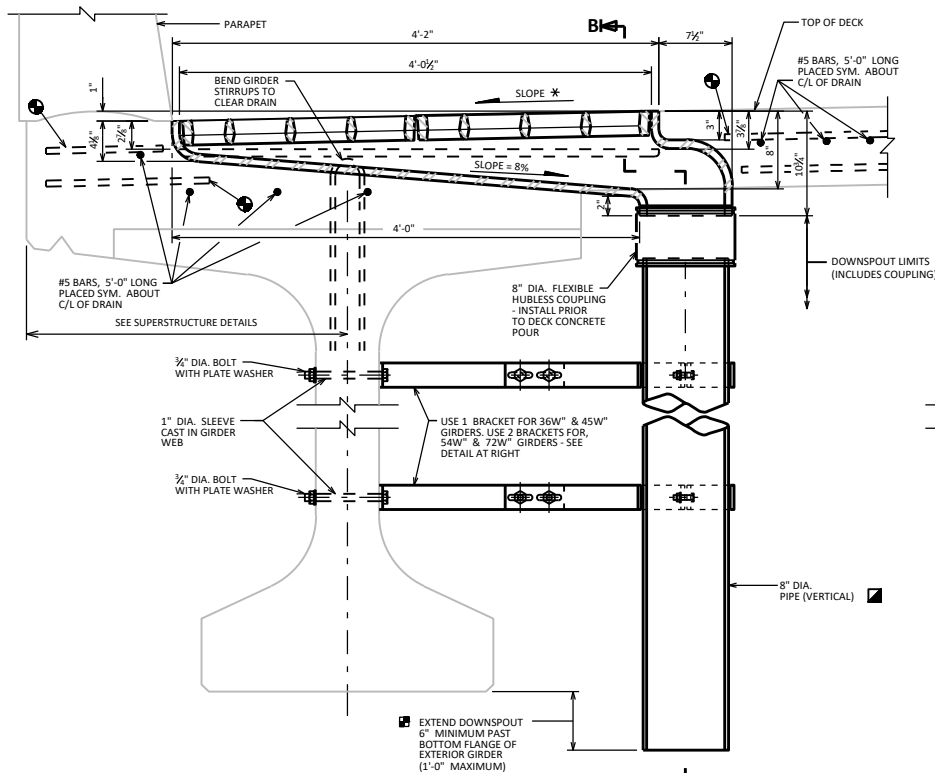
ON THE PRESTRESSED GIRDER SHEET, SHOW LOCATION OF HOLES FOR BRACKET ANCHORAGE FROM TOP/BOTTOM AND END OF GIRDER.

- * A DECK X-SLOPE OF 2% PROVIDES AN INTERNAL SLOPE OF 8% (AS SHOWN IN THIS DETAIL) AND A PLUMB DOWNSPOUT COUPLER CONNECTION. DECK X-SLOPE MAY BE ADJUSTED UP TO 6% TO MAINTAIN AN INTERNAL SLOPE OF 2%.

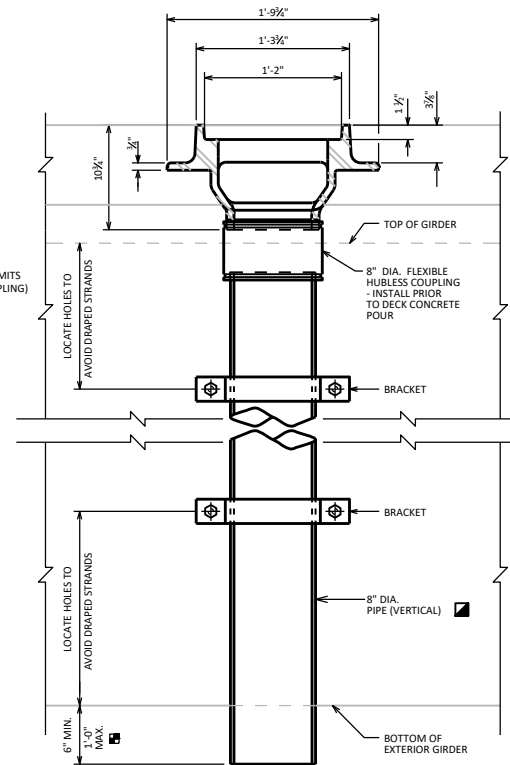


GRATE CASTING DETAILS

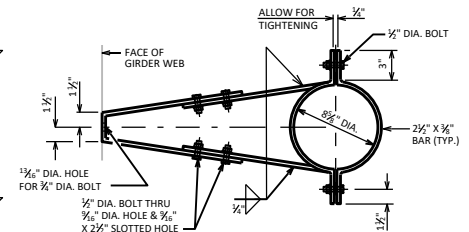
ATTACH GRATES TO FRAME FOR SHIPMENT



SECTION A-A



SECTION B-B



BRACKET DETAIL

■ DETAIL NOT TO BE USED OVER RAILROADS BECAUSE IT VIOLATES CLEARANCE REQUIREMENTS. CONTACT RAILROADS AND HARBORS SECTION FOR GUIDANCE.

FLOOR DRAIN TYPE 'WF'



**BUREAU OF
STRUCTURES**

APPROVED: *Laura Shadewald*

DATE:
7-25