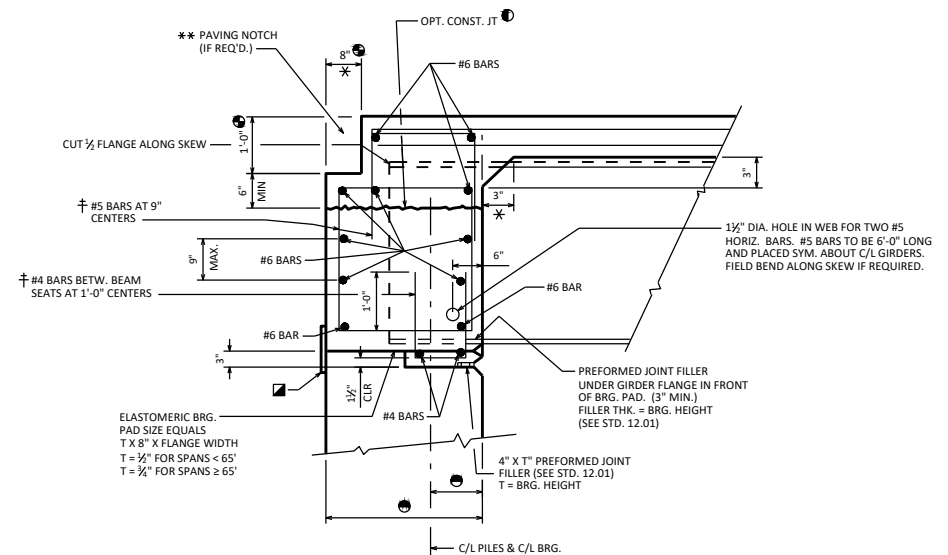
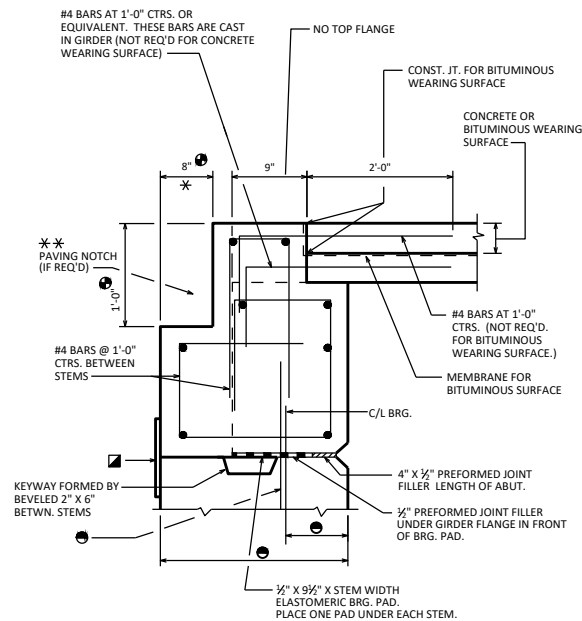


**STEEL GIRDER WITH
FIXED SEAT**



**STEEL GIRDER WITH
SEMI-EXPANSION SEAT**



**PRECAST DOUBLE TEE OR
MULTI-STEM SECTION**

NOTES

FOR SKEWED STRUCTURES CAST END OF PRECAST TEE ALONG SKEW.

* DIMENSION IS TAKEN NORMAL TO C/L SUBSTRUCTURE UNITS.

■ 1'-6" RUBBERIZED MEMBRANE WATERPROOFING

† BARS PLACED PARALLEL TO GIRDERS. SPACING PERPENDICULAR TO C/L GIRDERS.

DESIGNER NOTES

SEE STANDARD 19.55 FOR PRESTRESSED BOX GIRDER BEARING DETAILS.

- ① THE USE OF THIS OPT. CONST. JOINT IS NOT RECOMMENDED FOR SKEWS OVER 15° WHEN LARGE DEADLOAD END ROTATION IS ANTICIPATED.
- ** USE PAVING NOTCH ON ALL S.T.H., U.S.H., I.H. BRIDGES. USE PAVING NOTCH ON C.T.H. BRIDGES WITH CONCRETE APPROACHES. PAVING NOTCHES OPTIONAL ELSEWHERE.
- Ⓜ PAVING NOTCH IS 1'-0" WIDE BY 1'-4" DEEP IF STRUCTURAL APPROACH SLAB (STD. 12.10) IS USED.
- Ⓜ SEE STD. 12.01

**BRG. DETAILS FOR STEEL
GDRS. AND PRECAST
UNITS ON A1 ABUTMENTS**



**BUREAU OF
STRUCTURES**

APPROVED: *Laura Shadewald*

DATE:
7-25