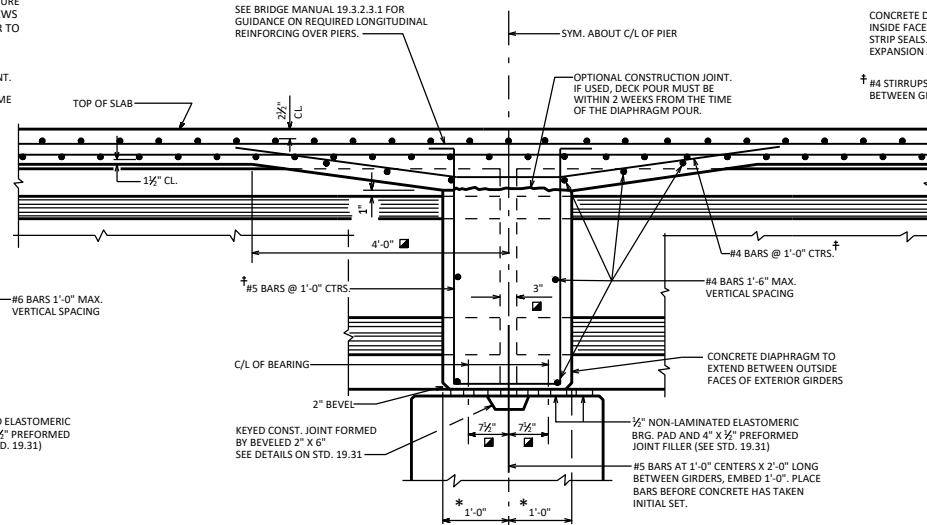
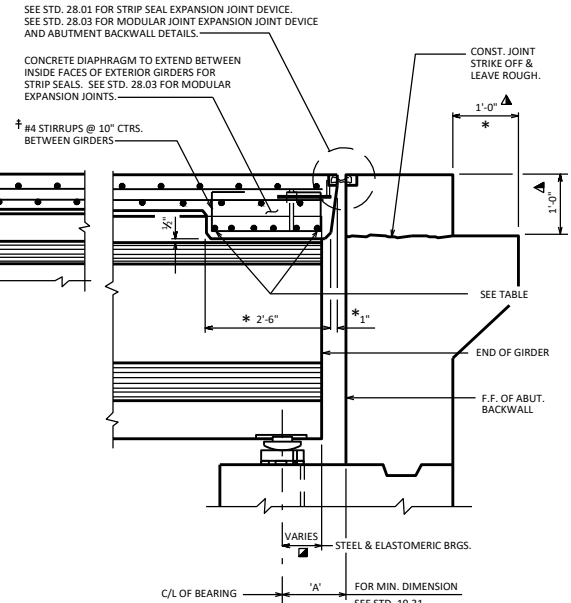


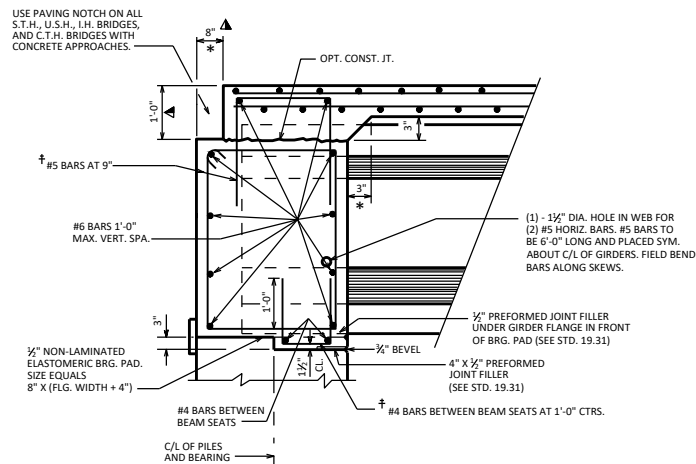
**FIXED END
FOR SKEWED AND SQUARE STRUCTURES**



DIAPHRAGM AT 1/2" ELASTOMERIC BEARING



EXPANSION END



**PRESTRESSED GIRDER WITH
SEMI-EXPANSION SEAT**

EXPANSION END DIAPHRAGM STEEL

DIAPHRAGM LENGTH (ALONG SKEW) (C/L TO C/L OF GIRDERS)	NO. OF BARS AND BAR SIZE	
	28"	36"
≤ 8'-4"	6 - #6	6 - #6
> 8'-4" ≤ 11'-4"	6 - #8	6 - #7
> 11'-4" ≤ 14'-9"		6 - #8

DESIGNER NOTES

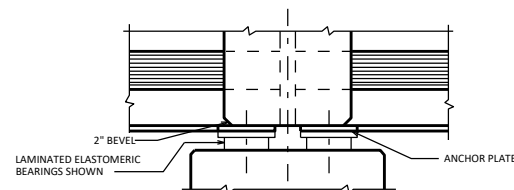
LAP LENGTHS FOR ALL BARS SHALL BE BASED ON A "CLASS C" TENSION LAP SPLICE, EXCEPT HORIZONTAL DIAPHRAGM BARS, IF SPLICED, CAN UTILIZE A "CLASS A" TENSION LAP SPLICE.

LEGEND

- DIMENSION IS TAKEN PARALLEL TO C/L GIRDER.
- * DIMENSION IS TAKEN NORMAL TO C/L SUBSTRUCTURE UNITS.
- ▲ PAVING NOTCH IS 1'-0" WIDE BY 1'-4" DEEP IF STRUCTURAL APPROACH SLAB (STD. 12.10) IS USED. SHOW NO. 9 STAINLESS STEEL BAR (STD. 12.12) FOR STRUCTURAL APPROACH SLAB ON THE SECTION THRU ABUT. OR ABUT. DIAPH.
- † BARS PLACED PARALLEL TO GIRDERS. SPACING PERPENDICULAR TO C/L GIRDERS.

SEE STANDARD 19.34 FOR 36W" & 45W" PRESTRESSED GIRDERS SLAB AND SUPERSTRUCTURE DETAILS

SEE STANDARD 19.35 FOR 54W", 72W" & 82W" PRESTRESSED GIRDERS SLAB & SUPERSTRUCTURE DETAILS.



**DIAPHRAGM AT STEEL OR ELASTOMERIC BEARINGS
SECTION THRU DIAPHRAGM AT PIER**

FOR STEEL BEARINGS, FORM DIAPHRAGM APPROXIMATELY 1/2" ABOVE BEARING KEEPER BARS

28" & 36" PRESTRESSED GIRDERS SLAB & SUPERSTRUCTURE DETAILS



**BUREAU OF
STRUCTURES**

APPROVED: *Laura Shadewald*

DATE:
7-25