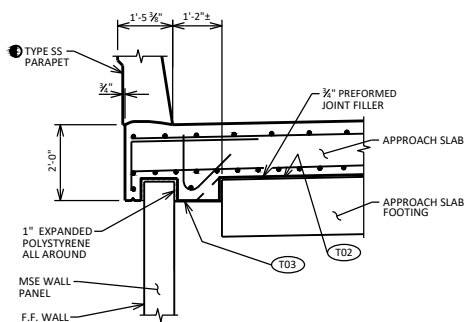


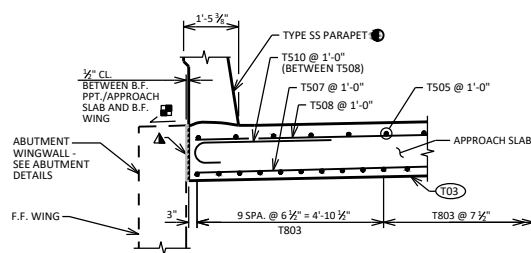
SECTION A-A

(AT MSE WINGWALLS)



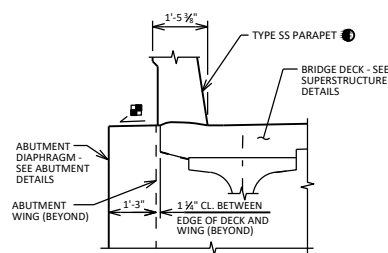
SECTION B-B

(AT MSE WINGWALLS)



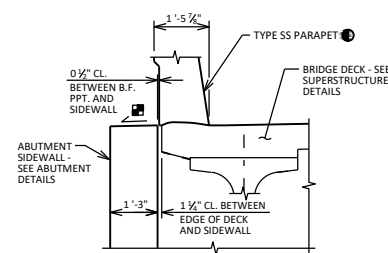
SECTION C-C

(AT WINGWALLS PARALLEL TO BRIDGE)



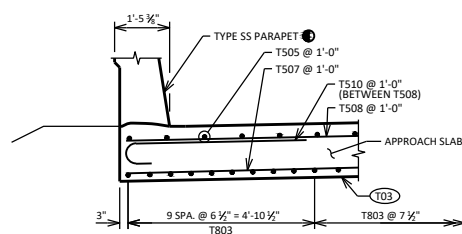
SECTION D-D

(AT WINGWALLS PARALLEL TO BRIDGE - A1 ABUT.)



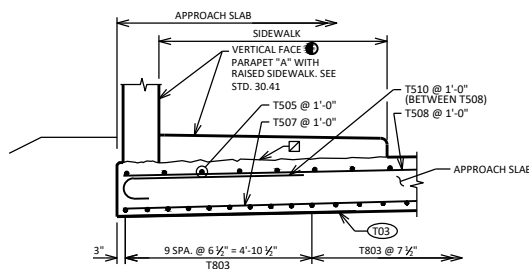
SECTION D-D *

(AT WINGWALLS PARALLEL TO BRIDGE - A3 ABUT.)



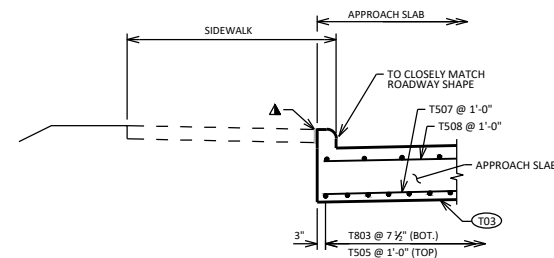
SECTION C-C *

(AT WINGWALLS PARALLEL TO ABUT.)



SECTION C-C *

(AT WINGWALLS PARALLEL TO ABUT.)



SECTION C-C *

(AT WINGWALLS PARALLEL TO ABUT.)

LEGEND

- T02** STEEL TROWEL TOP SURFACE OF FOOTING AND PLACE MULTIPLE LAYERS (0.03" MIN. TOTAL THK.) OF POLYETHYLENE SHEETS OVER THE ENTIRE TOP OF FOOTING.
- T03** PLACE MULTIPLE LAYERS (0.03" MIN. TOTAL THK.) OF POLYETHYLENE SHEETS OVER THE ENTIRE TOP OF SUBGRADE BENEATH SLAB.
- ▲** SEAL ALL EXPOSED HORIZONTAL AND VERTICAL SURFACES OF 1/2" FILLER WITH NON-STAINING GRAY NON-BITUMINOUS JOINT SEALER. (1" DEEP AND HOLD 1/2" BELOW SURFACE OF CONCRETE).
- ①** SEE PARAPET STANDARDS FOR REINFORCEMENT, LOCATION OF NAME PLATE AND BENCH MARK WITH RESPECT TO THE END OF PARAPET, ETC.
- ☒** CONST. JOINT-STRIKE OFF AS SHOWN AND LEAVE ROUGH. FOR DECK POUR MATCH BRIDGE X-SLOPE.
- ▣** SLOPE TO DRAIN
- *** SECTION REPRESENTATIVE OF SIMILAR LOCATION AS SHOWN ON STANDARD 12.10 FOR DIFFERENT APPLICATION.

STRUCTURAL APPROACH SLAB DETAILS 1



BUREAU OF STRUCTURES

APPROVED: *Laura Shadewald*

DATE:
7-25

SECTIONS A-A THRU G-G ARE FROM STANDARD 12.10