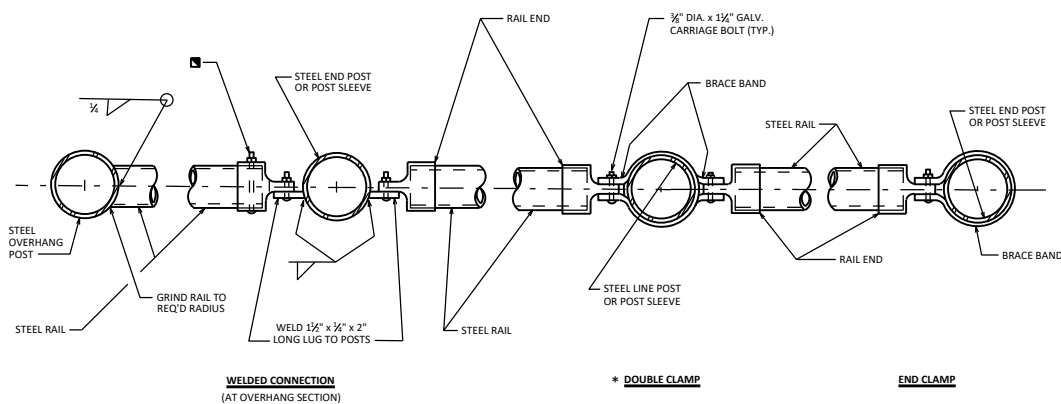
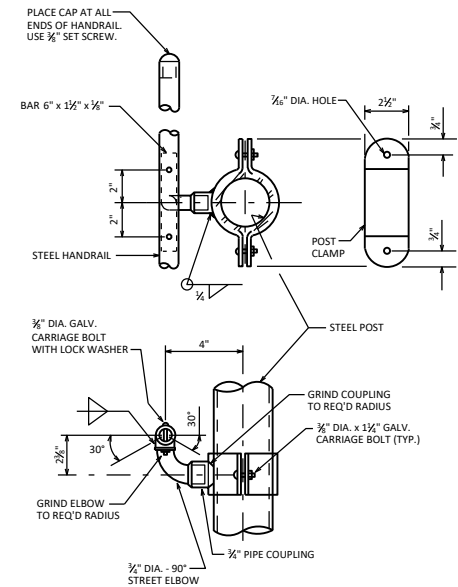
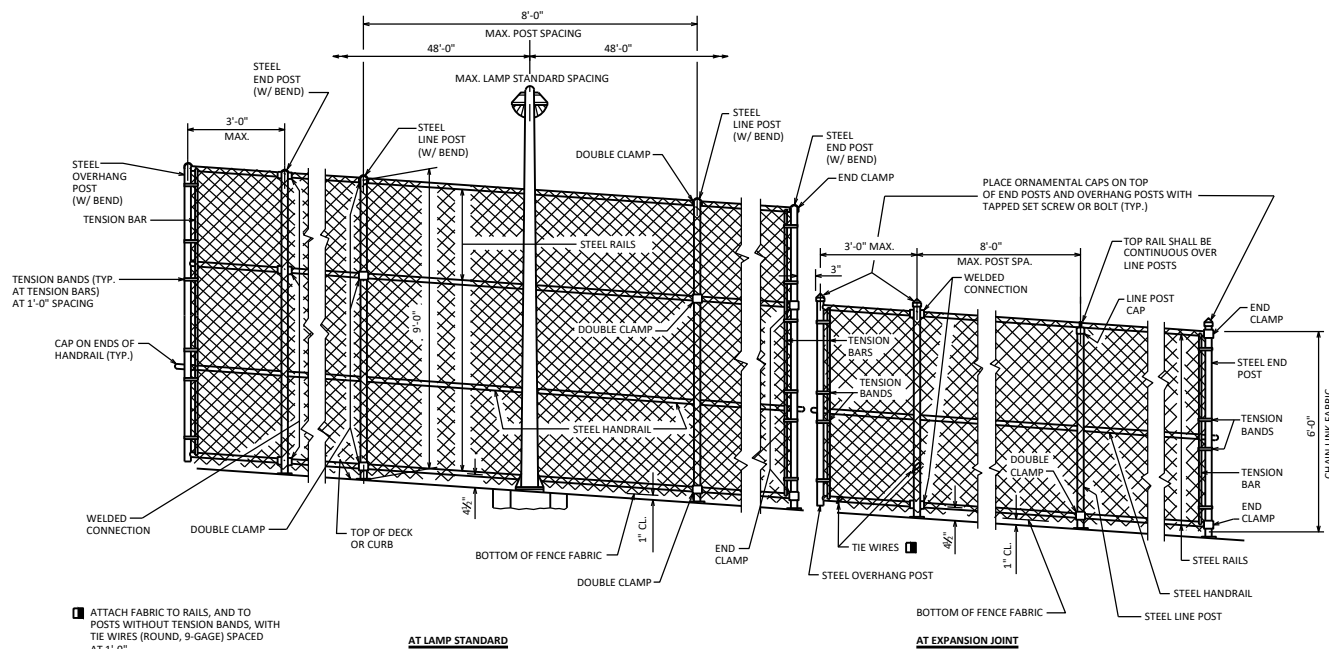
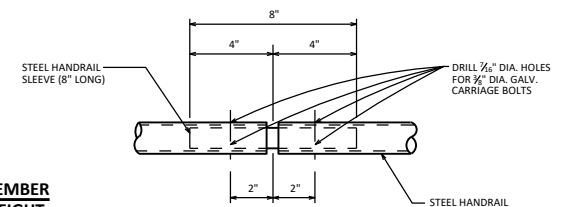


| | |
|----------|-------|
| STANDARD | 37.01 |
|----------|-------|



FENCE MEMBER SIZE & WEIGHT

| STEEL FENCE MEMBER | OUTSIDE DIAMETER (INCHES) | WEIGHT (LB/FT) |
|--------------------|---------------------------|----------------|
| RAILS | 1.660 | 2.27 |
| END POST | 2.875 | 5.80 |
| OVERHANG POST | 2.875 | 5.80 |
| LINE POST | 2.875 | 5.80 |
| HANDRAIL | 1.660 | 2.27 |
| CROSS RAIL SLEEVE | 1.900 | 2.72 |
| HANDRAIL SLEEVE | 1.315 | 1.68 |
| POST SLEEVE | 4.000 | 9.12 |



PEDESTRIAN OVERPASS DETAILS



BUREAU OF STRUCTURES

APPROVED: *Laura Shadewald*

DATE:
1-25