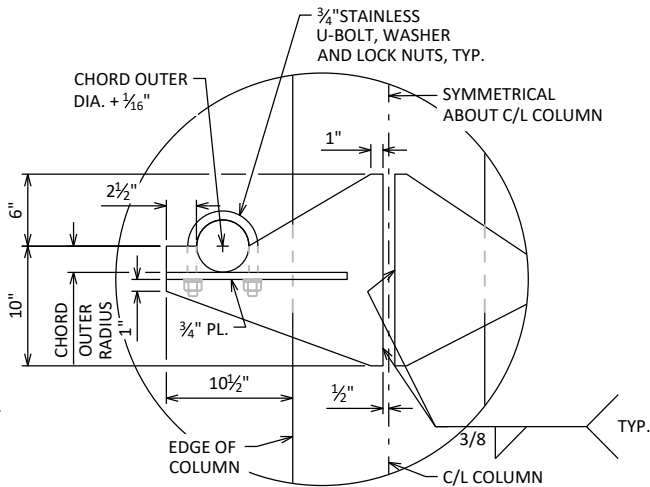
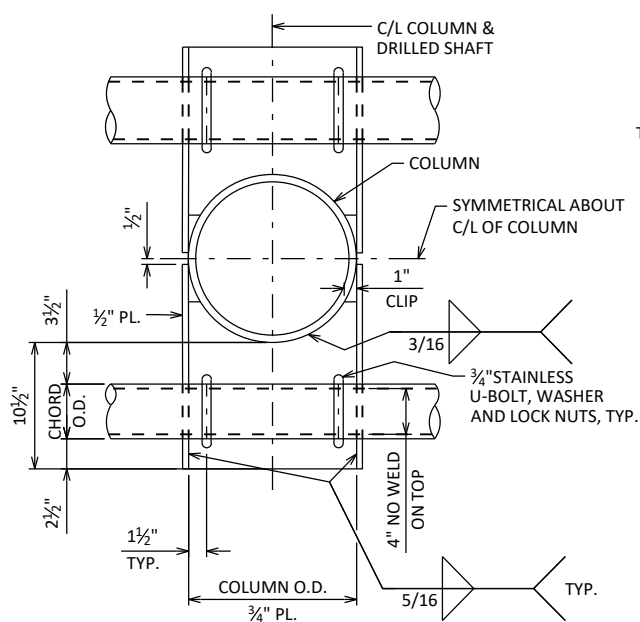


PLAN



DETAIL A

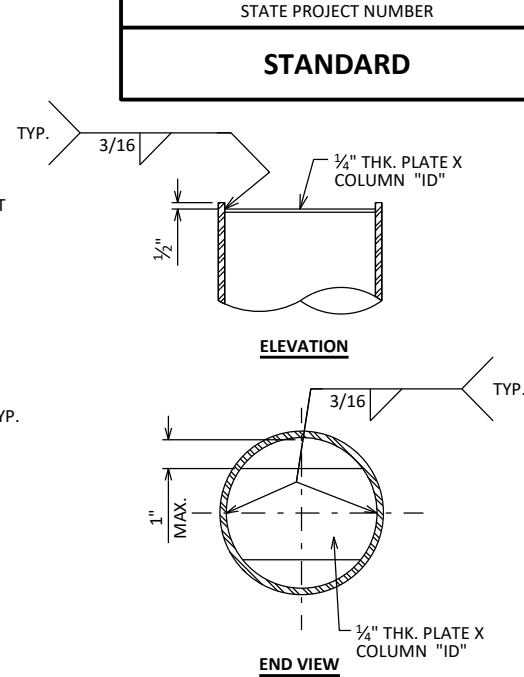
FRONT BRACKET CONNECTION SHOWN
BACK BRACKET SIMILAR



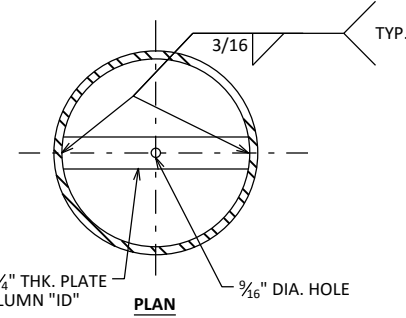
SECTION A-A

FRONT BRACKET CONNECTION SHOWN
BACK BRACKET SIMILAR

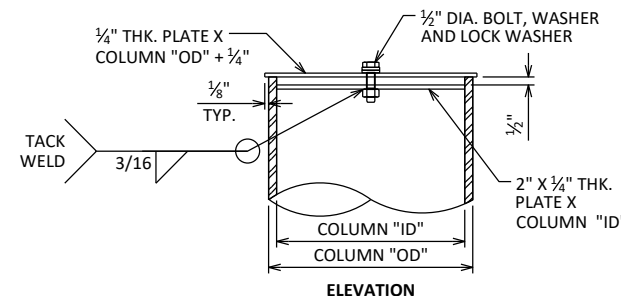
BRACKET FOR TOP CHORDS SIMILAR



CHORD CAP DETAIL



PLAN



ELEVATION

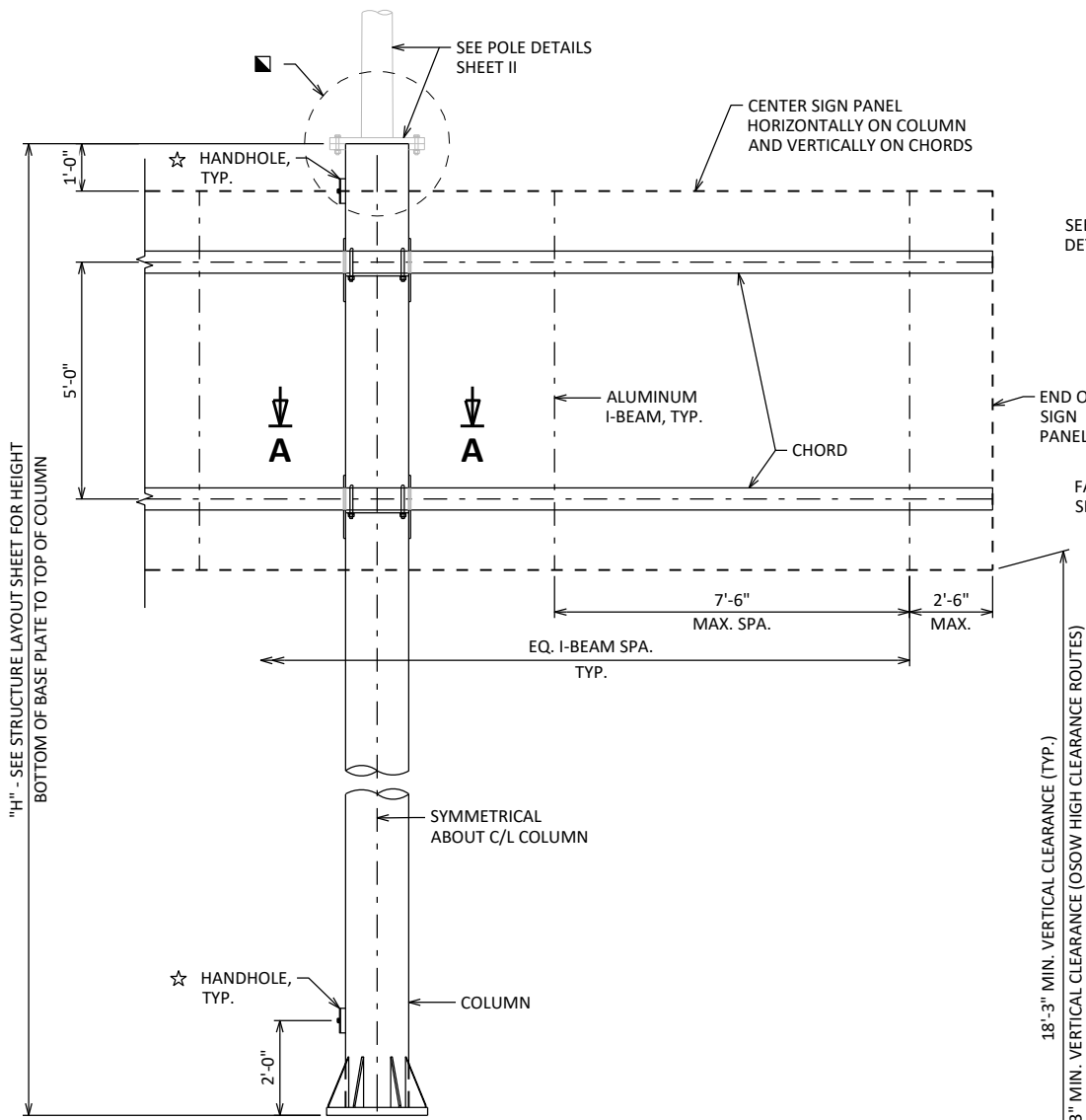
TOWER CAP DETAIL

■ USE ON STRUCTURES WITHOUT LIGHT POLE ATTACHMENTS

LEGEND

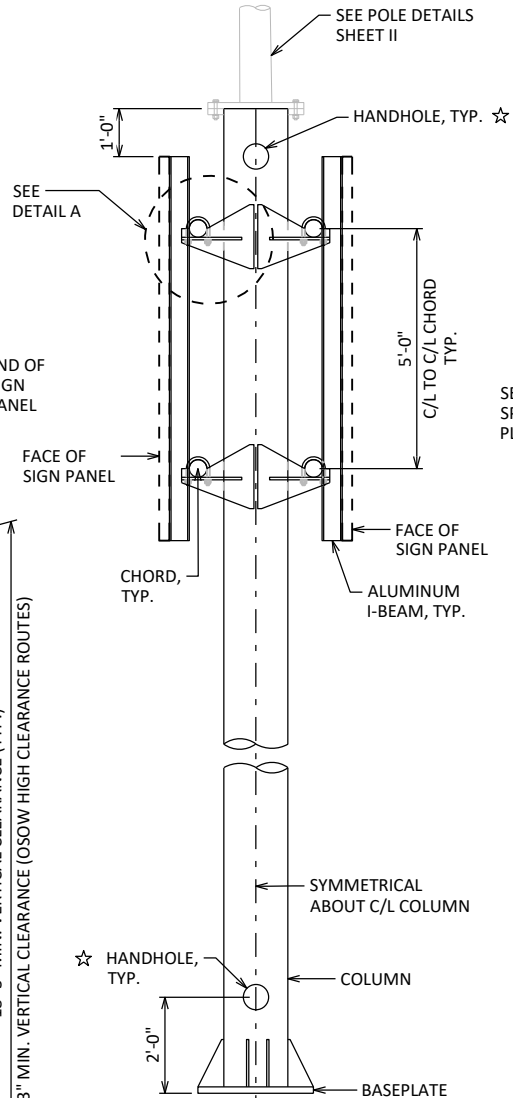
☆ FOR OSS WITH LIGHTING ONLY, PROVIDE HANDHOLES AS SHOWN. SEE "POLE DETAILS" AND "ELECTRICAL DETAILS" SHEETS.

NO.	DATE	REVISION	BY
STATE OF WISCONSIN DEPARTMENT OF TRANSPORTATION STRUCTURES DESIGN SECTION			
UPDATED: JAN. 2023			
DRAWN BY		BOS	PLANS CK'D BOS
2-CHORD BUTTERFLY DETAILS		SHEET I	

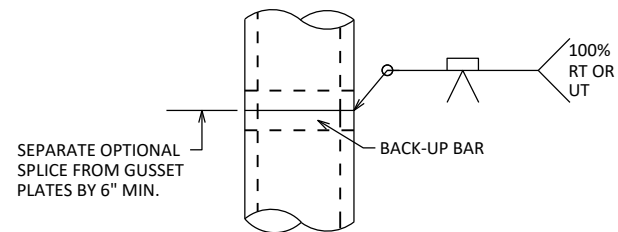


ELEVATION

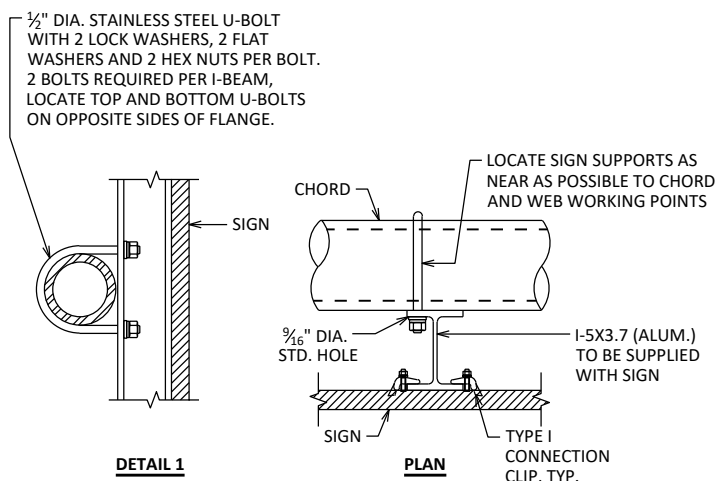
LOOKING AT F.F. OF BUTTERFLY



END VIEW



OPTIONAL COLUMN
OR CHORD SPLICE



DETAIL 1

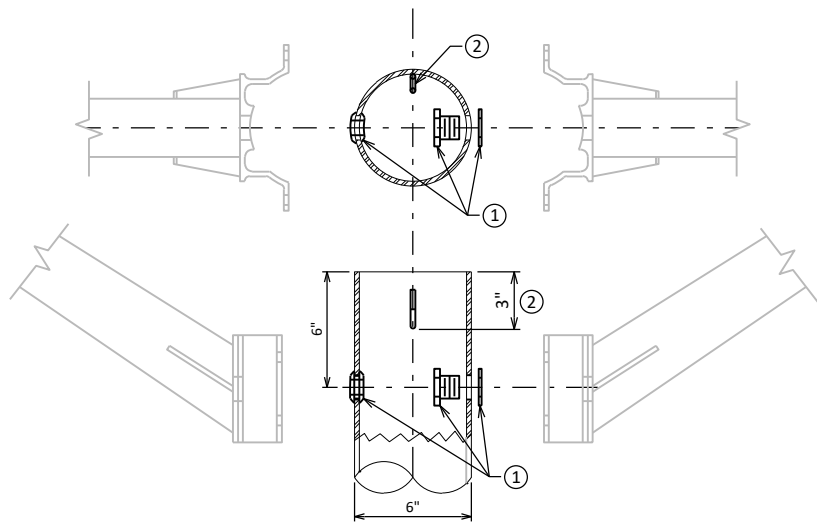
PLAN

TYPICAL SIGN CONNECTION

USE FOR TYPE I AND II SIGNS, TYPE I SIGN CONNECTION SHOWN
SEE SIGN PLATE MANUAL A4-7A AND A4-7B FOR DETAILS.

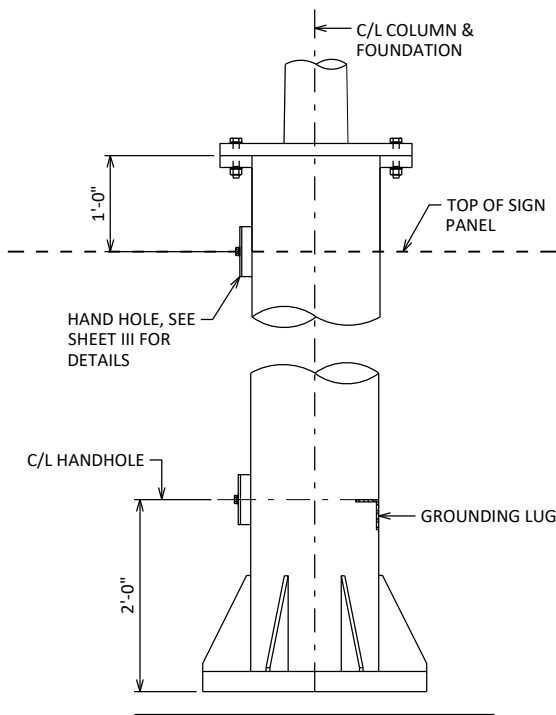
BUTTERFLY MEMBER TABLE

STANDARD DESIGN TYPE	TYPE I SIGN AREA (SQ. FT)	MAXIMUM SPAN "L" ♦	MAXIMUM COLUMN HEIGHT "H"	COLUMN "OD" X THK.	CHORD "OD" X THK	ANCHOR ROD DIA.	BASE PLATE "THK"	"BC"	"PC"	"HOLE"
I	200	12'-6"	26'-0"	16" X 0.375"	4.500" X 0.375"	1 3/4"	1 1/2"	1'-10"	2'-4"	1 13/16"



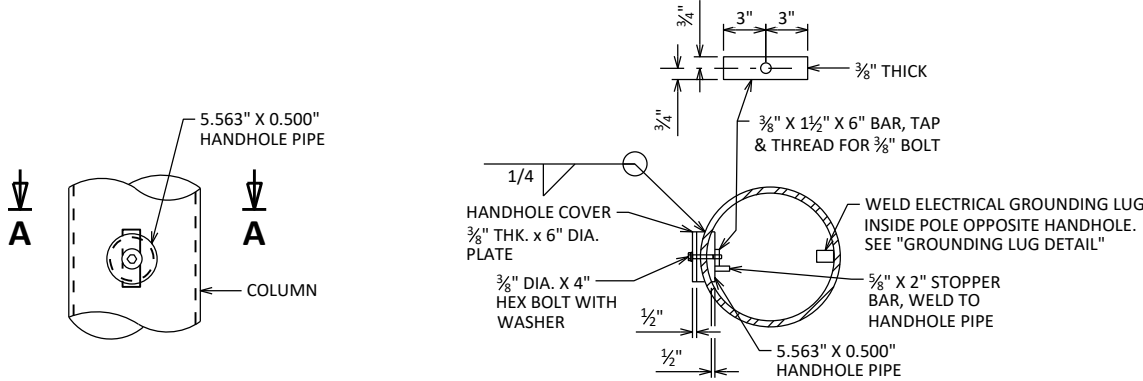
LIGHT POLE DETAILS

- 1 3/8" FIELD DRILLED HOLE WITH 1" CHASE NIPPLE AND NUT (OR NEOPRENE GROMMET), PER EACH REQUIRED LUMINAIRE ARM.
- FACTORY WELDED "J" HOOK FOR POLE WIRE STRAIN RELIEF.



GROUNDING LUG LOCATION

LOOKING ATF.F. OF STRUCTURE



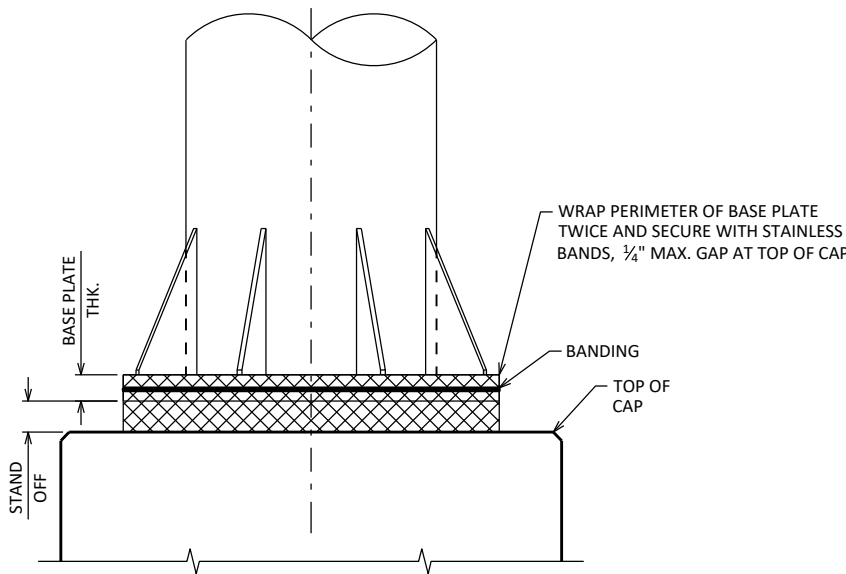
ELEVATION

SECTION A-A

HANDHOLE DETAILS

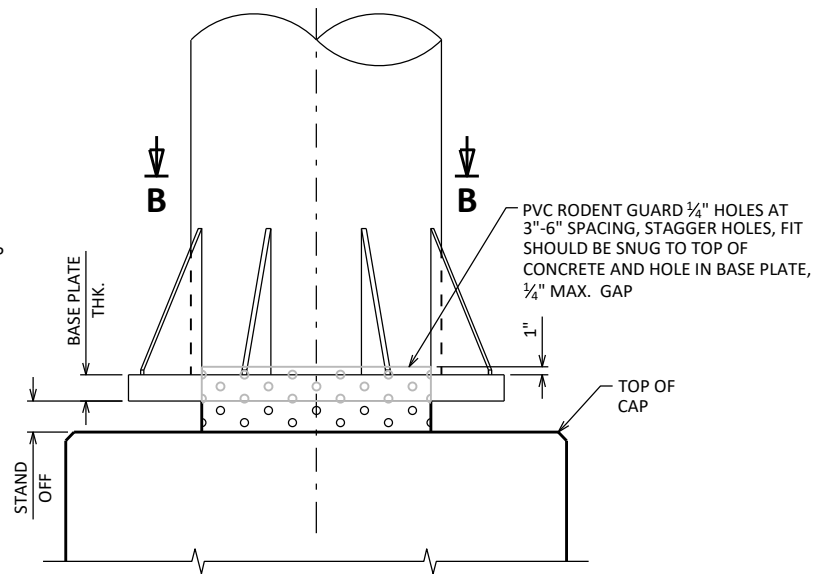
HAND HOLES SHALL BE LOCATED IN ONE COLUMN OF THE SIGN BRIDGE STRUCTURE IF ELECTRICALLY OPERATED DEVICES ARE INSTALLED ON/IN THE STRUCTURE. COLUMNS WITH HAND HOLES SHALL BE NEAR THE ELECTRICAL SERVICE. THE CONTRACTOR SHALL VERIFY THE LOCATION OF THE ELECTRICAL SERVICE ENTRANCE WITH THE REGION TRAFFIC SECTION PRIOR TO FABRICATION OF THE SIGN BRIDGE COLUMNS AND MEMBERS. CONDUIT (AS REQ'D.) SHALL BE LOCATED, PLACED AND SIZED AS SHOWN ON THE ELECTRICAL PLAN DETAIL SHEETS.

UNLESS OTHERWISE NOTED, ALL HAND HOLE ELEMENTS TO BE GALVANIZED PER THE WISDOT STANDARD SPECIFICATIONS.



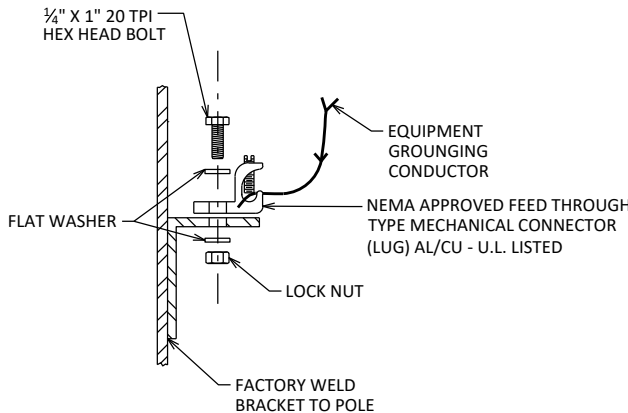
RODENT SCREEN

ONLY REQ'D WHEN ELECTRICAL DEVICES ARE PRESENT
ANCHOR RODS NOT SHOWN



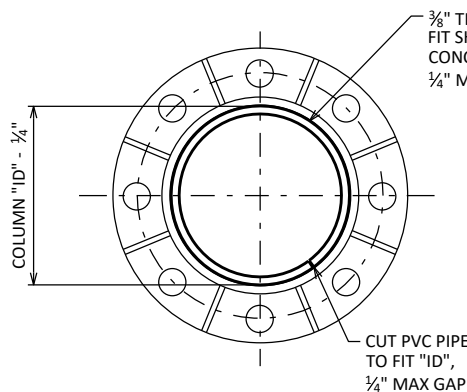
RODENT SCREEN - ALTERNATE

ONLY REQ'D WHEN ELECTRICAL DEVICES ARE PRESENT
ANCHOR RODS NOT SHOWN



GROUNDING LUG DETAIL

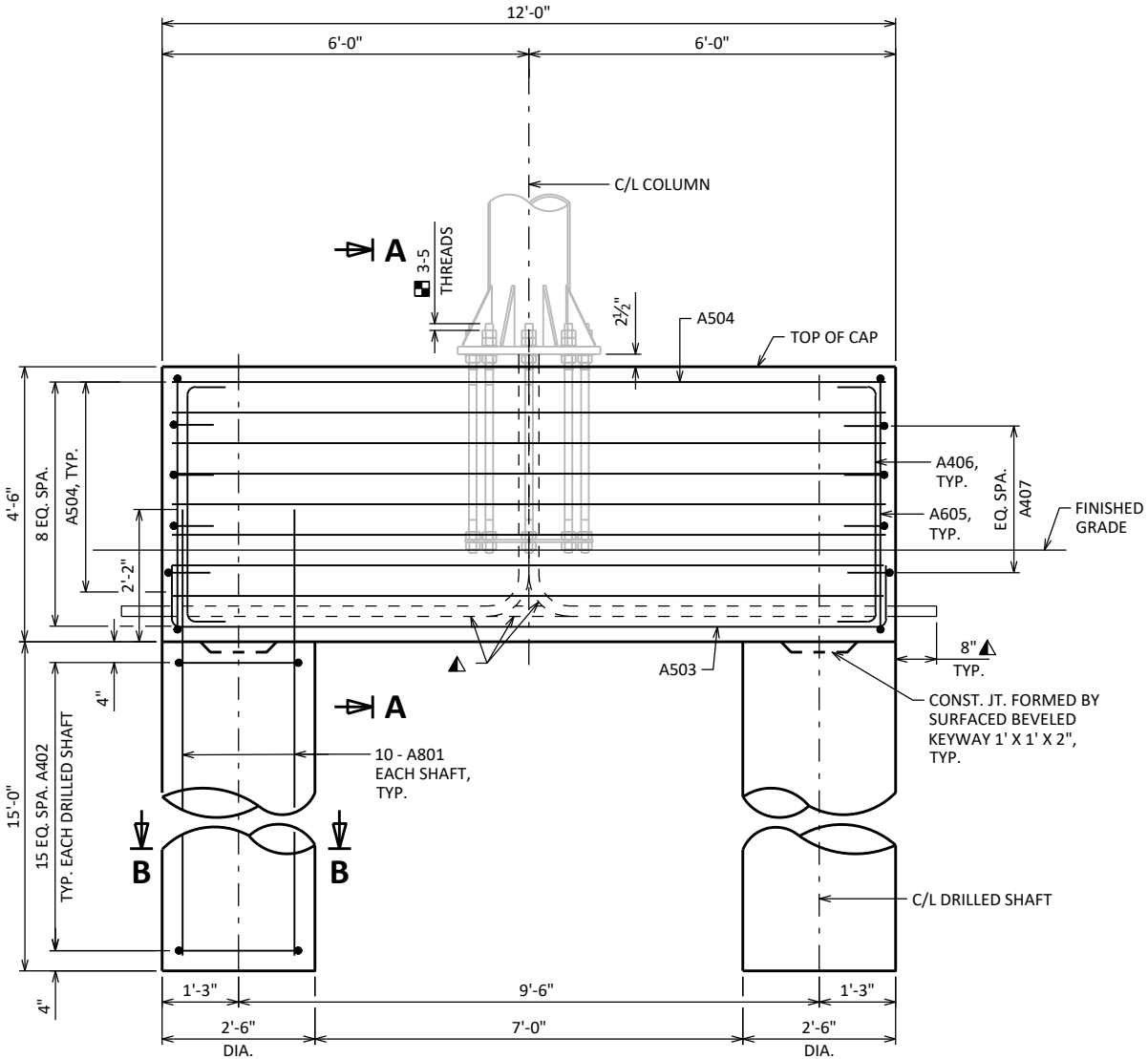
NUT, BOLT AND WASHERS SHALL BE STAINLESS STEEL



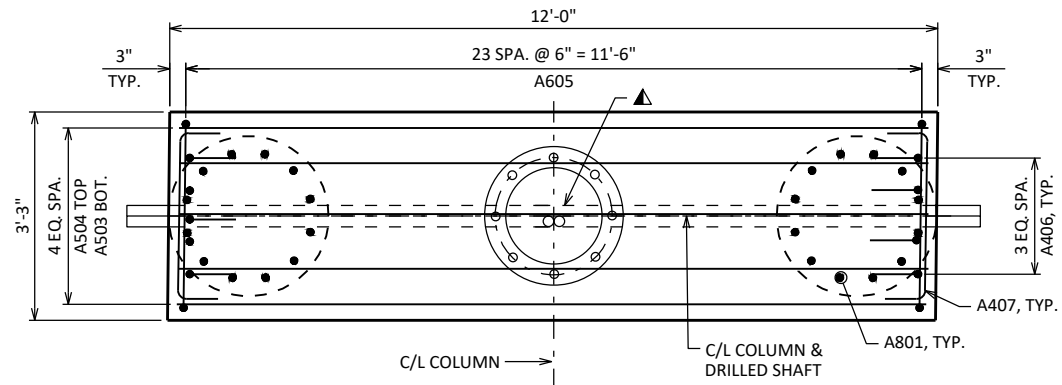
SECTION B-B

NO.	DATE	REVISION	BY
STATE OF WISCONSIN DEPARTMENT OF TRANSPORTATION STRUCTURES DESIGN SECTION			
UPDATED: JAN. 2023			
DRAWN BY		BOS	PLANS CK'D BOS
2-CHORD BUTTERFLY ELECTRICAL DETAILS		SHEET III	

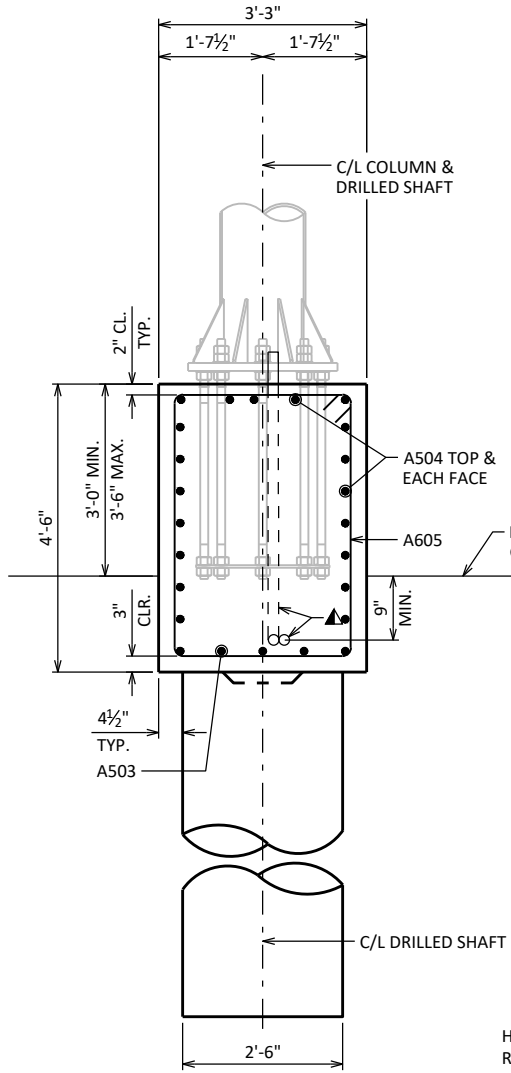
SCALE = 2.0



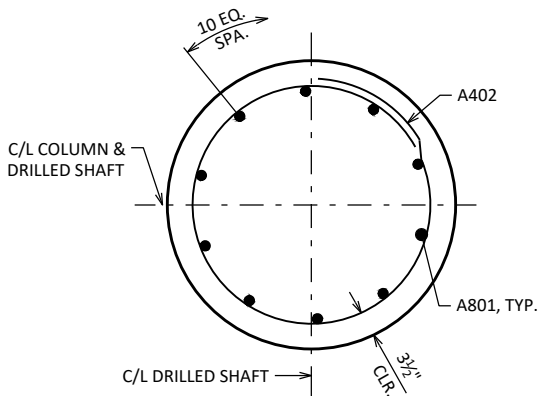
ELEVATION



PLAN

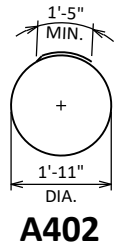


SECTION A-A

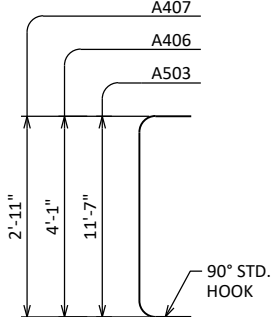


SECTION B-B

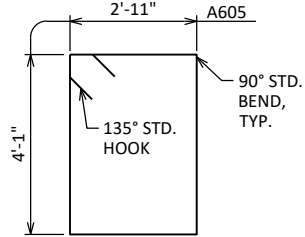
TYPICAL FOR EACH DRILLED SHAFT FOOTING



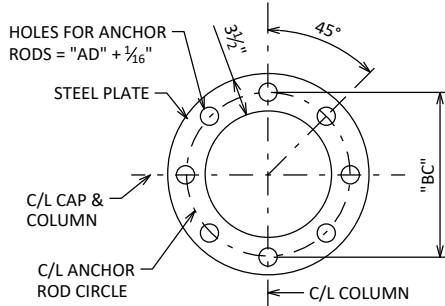
A402



A503, A406, A407



A605



ANCHOR PLATE & TOP TEMPLATE

ANCHOR ROD DIA. "AD"	BASE PLATE "THK."	"BC"
1 3/4"	1 1/2"	1'-10"

LEGEND

- 3 - 2" DIA. NON-METALLIC CONDUITS. INSTALL AND EXTEND CONDUITS AS SHOWN AND CAP OR SEAL EACH END WITH A SUITABLE REMOVABLE PLUG. 1 CONDUIT TO RUN STRAIGHT THROUGH FOUNDATION. CONDUITS INCIDENTAL TO THE FOUNDATION BID ITEMS.
- ANCHOR ROD STICK OUT IN FINAL CONDITION. EXCESSIVE STICK OUT BEYOND DIMENSION SHOWN TO BE CUT OFF AFTER PLACING STRUCTURE. ANCHORS TO BE ULTRASONIC TESTED TO DETERMINE EMBEDDED LENGTH MEETS REQUIREMENTS PRIOR TO CUTTING. NOTE REMAINING LENGTH ON AS-BUILT.

STATE PROJECT NUMBER

STANDARD

BILL OF BARS

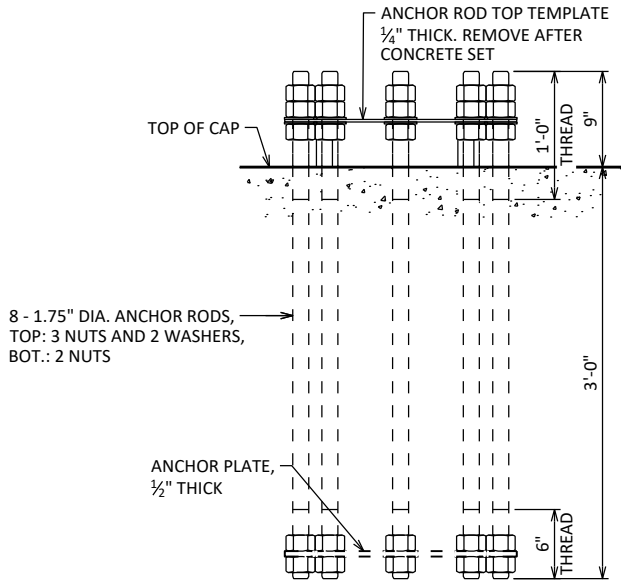
NOTE: THE FIRST OR FIRST TWO DIGITS OF THE BAR MARK SIGNIFIES THE BAR SIZE.

BAR MARK	COAT	NO. REQ'D.	LENGTH	BENT	BAR SERIES	LOCATION
A801		20	17'-0"			DRILLED SHAFT - VERTICAL
A402		32	7'-6"	X		DRILLED SHAFT - HORIZONTAL
A503	X	5	12'-7"	X		CAP - LONGITUDINAL - BOTTOM
A504	X	19	11'-8"			CAP - LONGITUDINAL - TOP & SIDES
A605	X	24	14'-11"	X		CAP - STIRRUP
A406	X	8	4'-9"	X		CAP - VERTICAL - EACH END
A407	X	8	5'-11"	X		CAP - HORIZONTAL - EACH END

ESTIMATED QUANTITIES - FOUNDATION

CONCRETE MASONRY	STEEL REINFORCEMENT HS	STEEL REINFORCEMENT HS COATED	ANCHOR ASSEMBLY 1.75-INCH	FOUNDATION DRILLING 30" DIA.
(CY)	(LBS)	(LBS)	(EACH)	(LF)
12.0	1,070	890	1	30

QUANTITIES ARE FOR INFORMATION ONLY.



ELEVATION

ANCHOR ROD ASSEMBLY DETAILS

SINGLE ANCHOR ASSEMBLY SHOWN, 8 ANCHOR RODS PER ASSEMBLY

CENTER ANCHOR ROD ASSEMBLY AND MAKE SURE IT IS PLUMB. MAINTAIN ANCHOR ROD PROJECTION ABOVE TOP OF CONCRETE AS DETAILED. ANCHOR ROD ASSEMBLY SHALL BE RIGIDLY SECURED IN POSITION DURING AND AFTER CONCRETE PLACEMENT. DO NOT WELD THE ANCHORS.

NO.	DATE	REVISION	BY
		STATE OF WISCONSIN DEPARTMENT OF TRANSPORTATION STRUCTURES DESIGN SECTION	
		UPDATED: OCT. 2024	
		DRAWN BY BOS	PLANS CK'D BOS
		2-CHORD BUTTERFLY FOUNDATION DETAILS	SHEET IV

SCALE = 3/0