

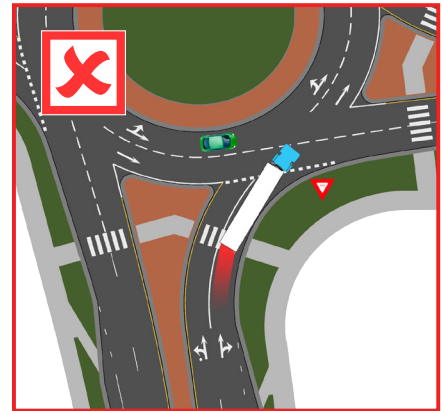
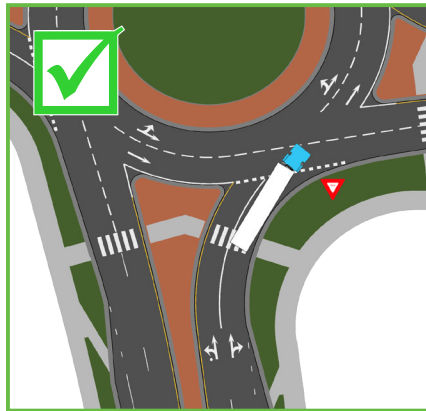
Navigating Roundabouts with Large Vehicles

GIVE 'EM SPACE

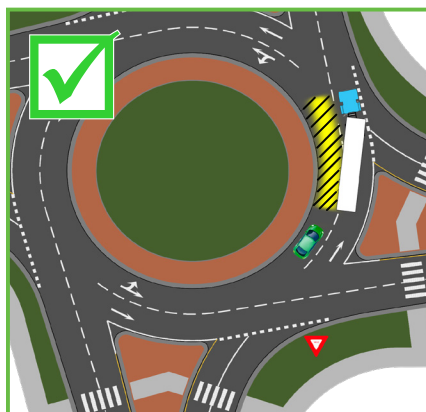
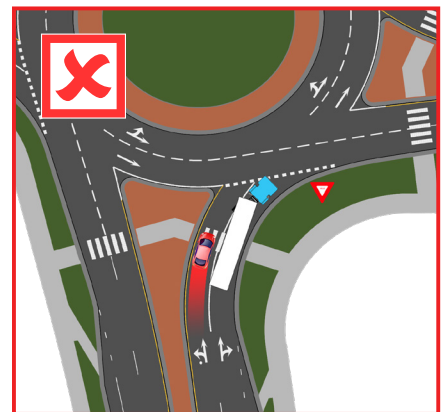
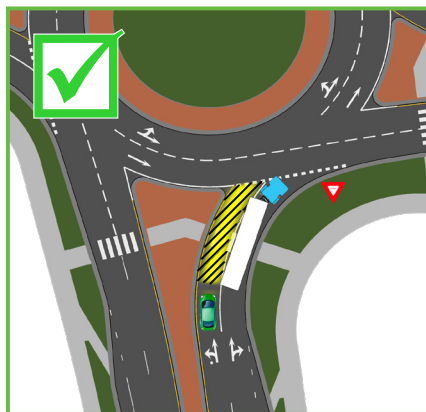
IT'S THE LAW!

Wisconsin Act 139 requires drivers of smaller vehicles (i.e., sedans, pickup trucks or motorcycles) to give space to larger vehicles (i.e., tractor-trailer, bus, fire truck or farm equipment) when approaching a roundabout alongside or adjacent to that larger vehicle. Drivers should yield or slow down to allow the larger vehicle first entry into the roundabout and provide space while navigating the roundabout.

LARGE VEHICLES YIELD AT ENTRY TO CIRCULATING TRAFFIC



SMALLER VEHICLES GIVE LARGE VEHICLES SPACE



Roundabout Basics

- Reduce your speed as you approach the roundabout
- Yield to pedestrians and bicyclists at the crosswalk as you enter and exit
- It's important to remember that all vehicles, including large vehicles, must yield at a roundabout's entrance until there is a safe gap in traffic

