



# **WIS 73**

## **Public Involvement Meeting**

Middleton Street to Commerce Court  
Columbia and Dodge County  
WisDOT Project 6060-02-01

**December 5, 2024 at 5:30 p.m.**

**The Columbus Community Center**

# Who can I talk with about the project?

**Marc Schweiger**

WisDOT Project Supervisor

**Josh Koebernick**

WisDOT Project Manager

**Emily Kendall**

WisDOT Project Lead Engineer

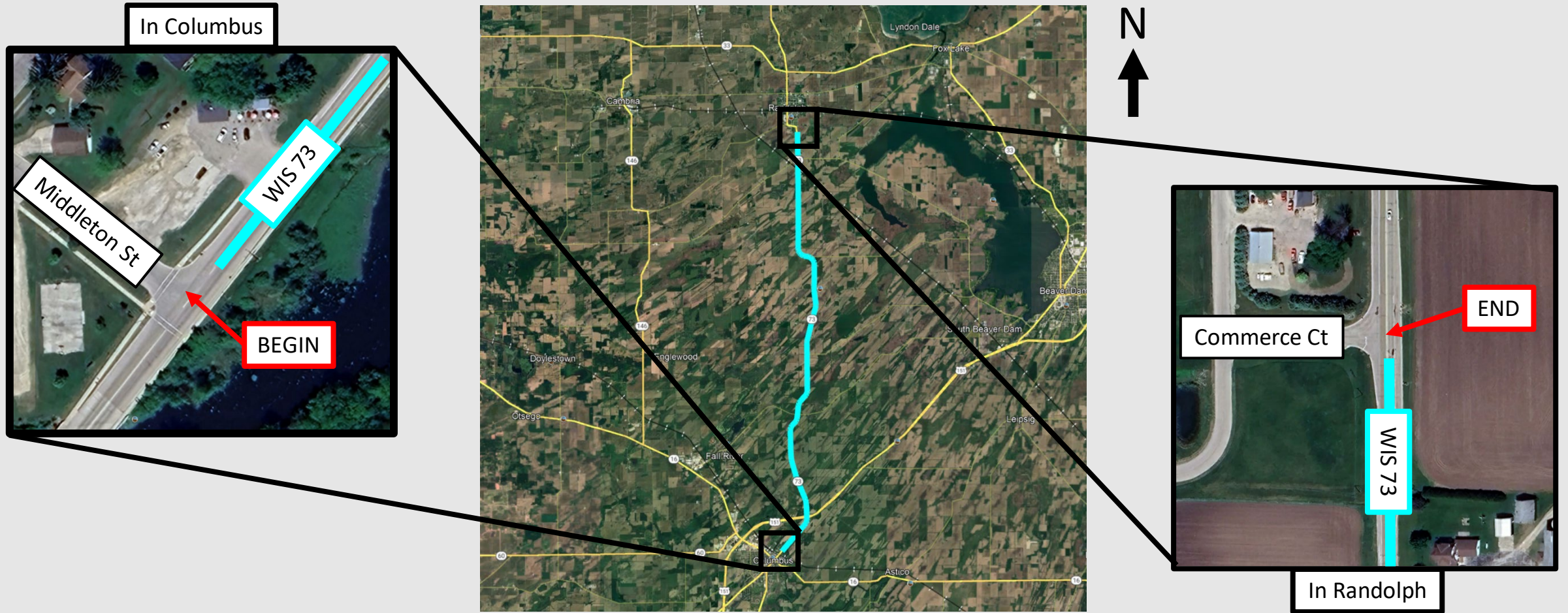


# Presentation agenda

- Project limits
- Project purpose and need
- Design overview
- Recent activities
- Upcoming schedule
- Contact information

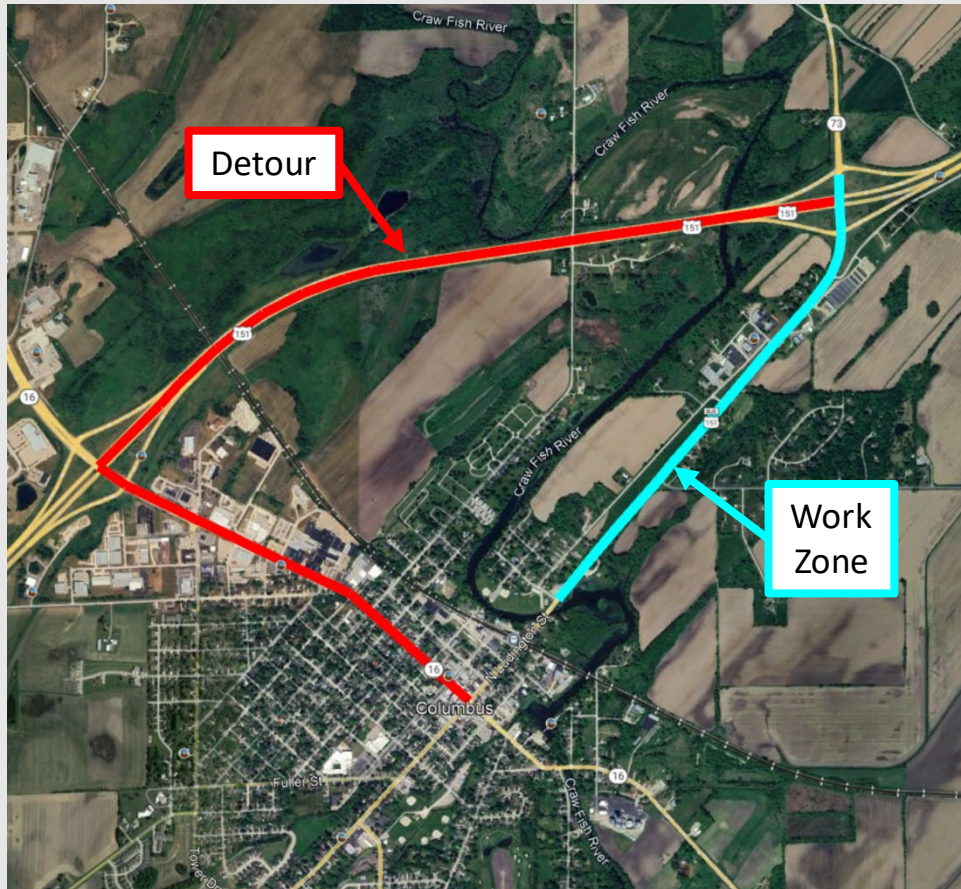


# What are the project limits?

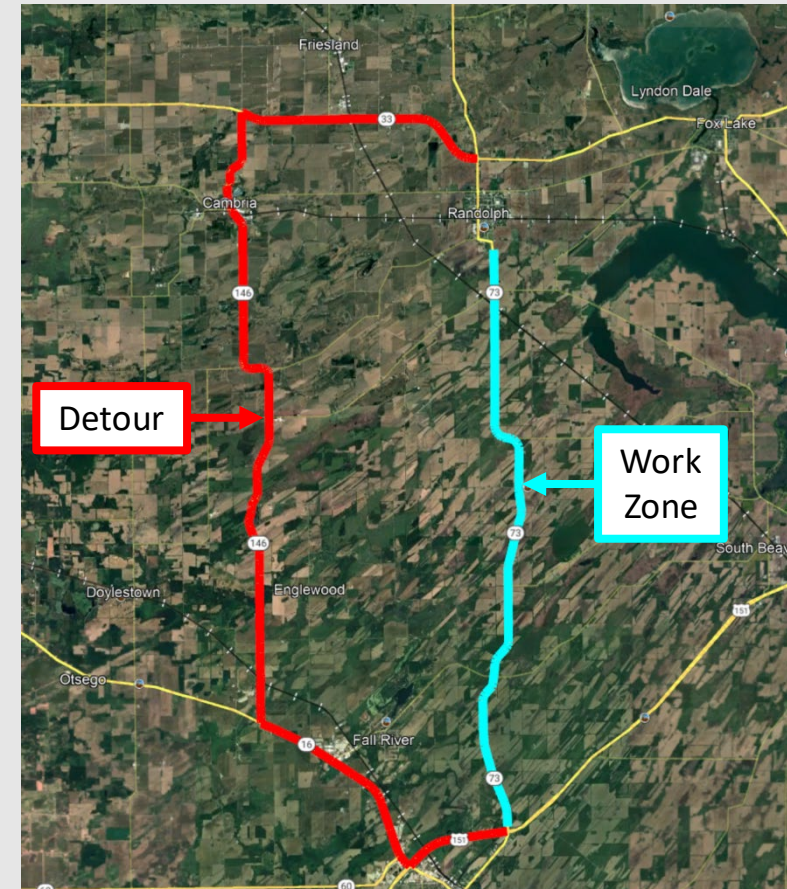




# What will happen to WIS 73 traffic?



Segment 1: Middleton Street to US 151



Segment 2: US 151 to Commerce Court



# Why do we need this project?

## Pavement deterioration



Cracking



Patching



Cracking & Patching



# Why do we need this project?

## Guardrail



Erosion around posts



Incorrect post height



Block Separation



# Why do we need this project?

## Structure concerns – bridge over US 151



Cracking



Bridge over US 151



Crack Repairs



# Why do we need this project?

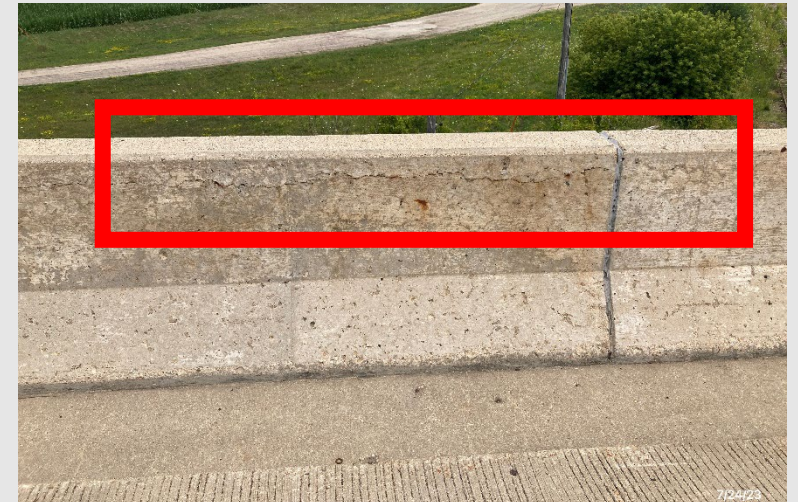
## Structure concerns – bridge over railroad



Cracking & Chipping



Bridge over Railroad



Cracking



# Why do we need this project?

## Structure concerns – box culvert over creek



Cracking



Cracking & Chipping



Cracking & Settling



# Why do we need this project?

## Culvert condition & drainage concerns



Endwall Separation



Corrosion



Scour



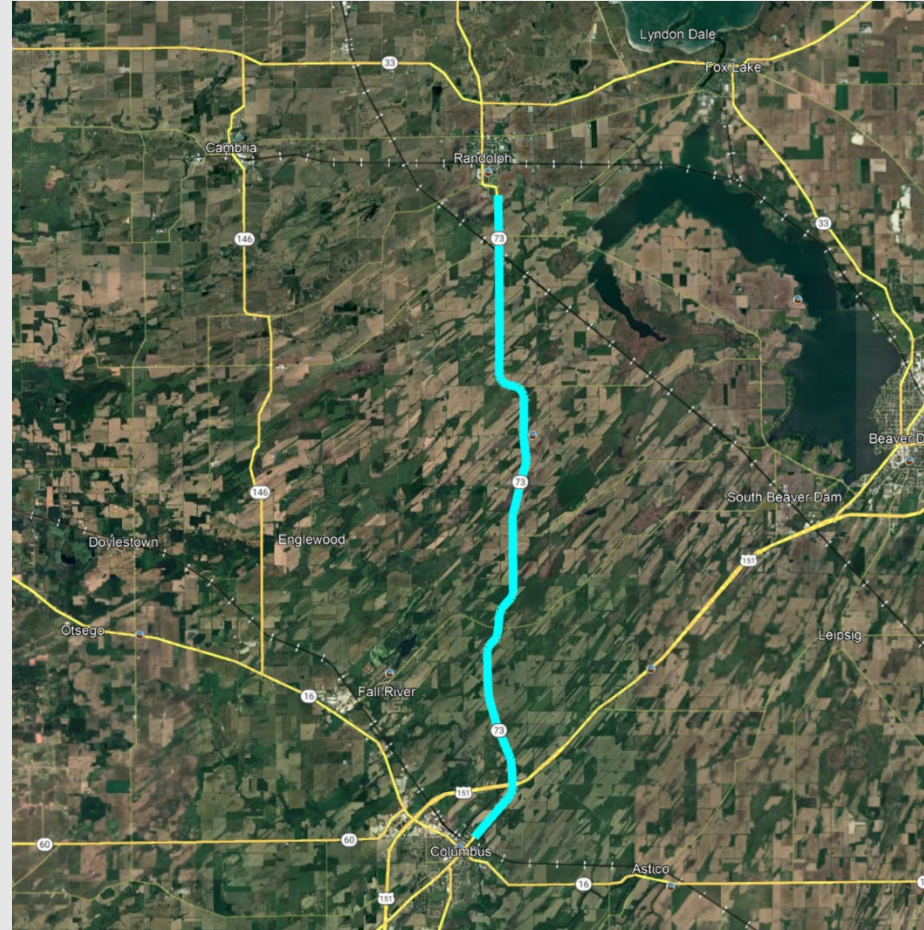
# Why do we need this project?

## Americans with Disabilities Act (ADA) Compliance

- No connection from the sidewalk to Rotary Park



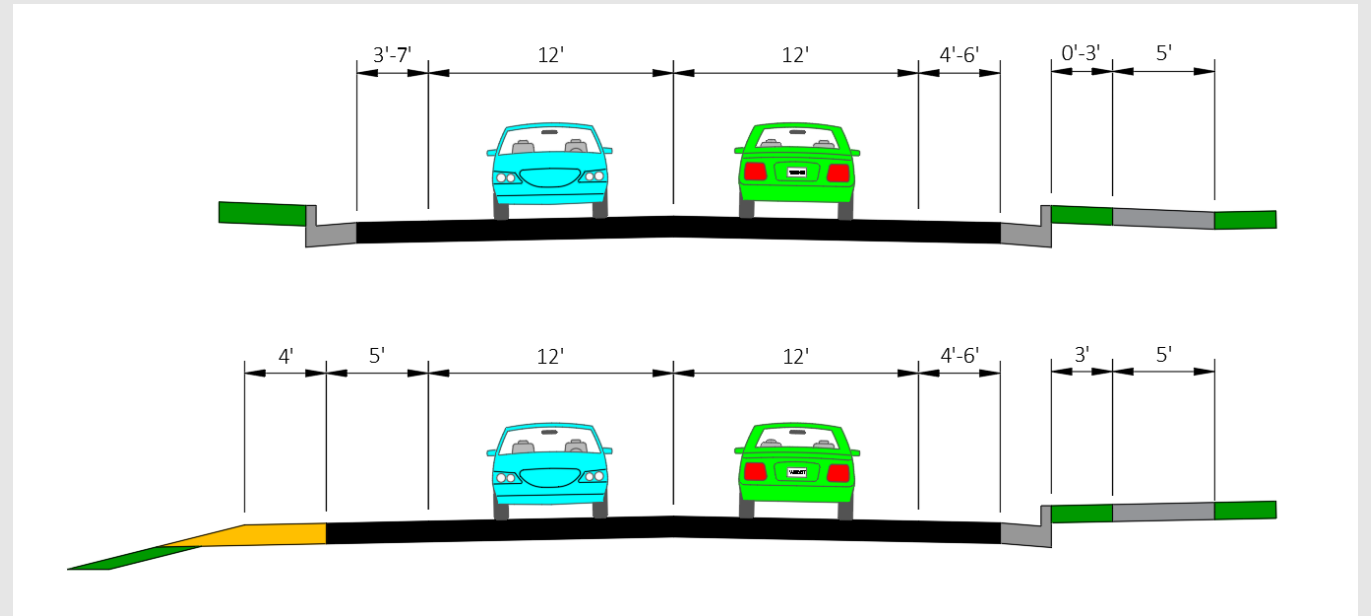
# What improvements are proposed?



# Design overview

## Section 1: Middleton Street to Recreation Road

- Mill and overlay 3.5" asphalt
- Widen paved shoulders to 5 ft
- Existing curb and gutter planned to remain

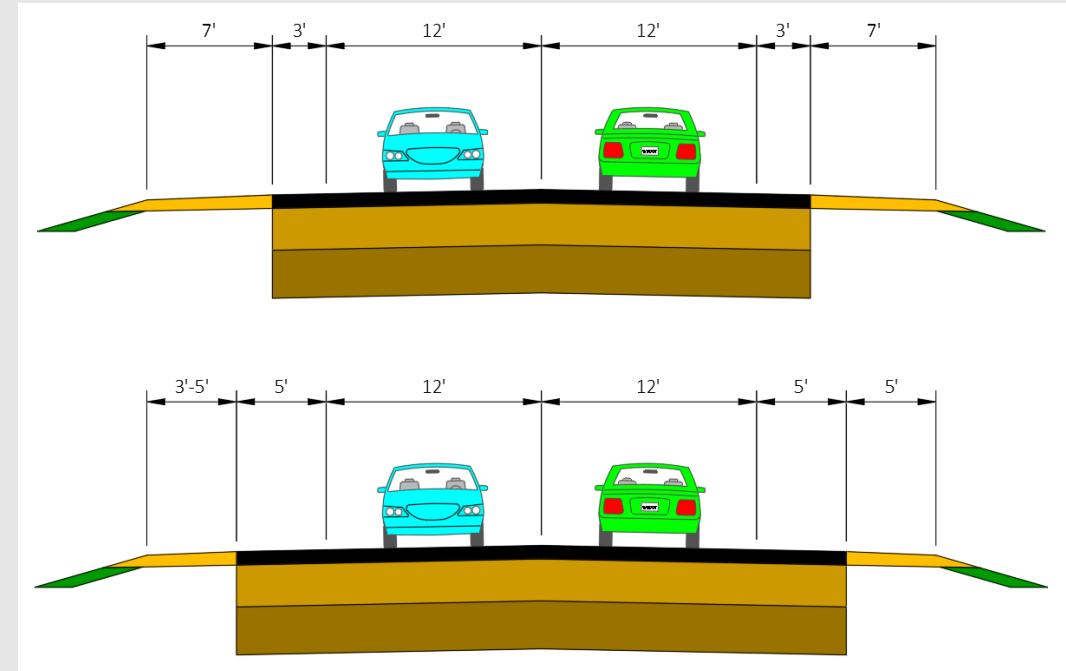




# Design overview

## Section 2: Recreation Road to US 151

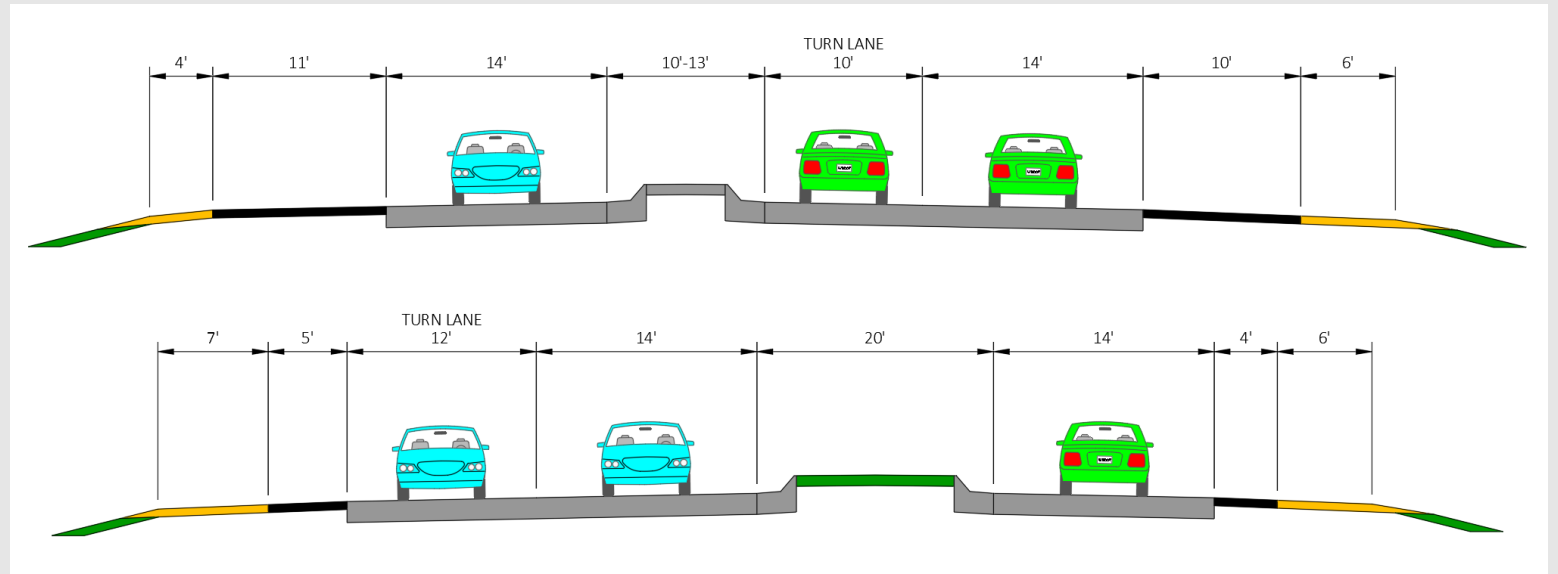
- Remove all existing pavement
- Pavement structure
  - 5" asphalt
  - 14" aggregate
  - 16" select crush
- Widen paved shoulders to 5 ft
  - From Recreation Rd to Lange Rd
- Existing curb and gutter will remain



# Design overview

## Section 3: US 151 overpass

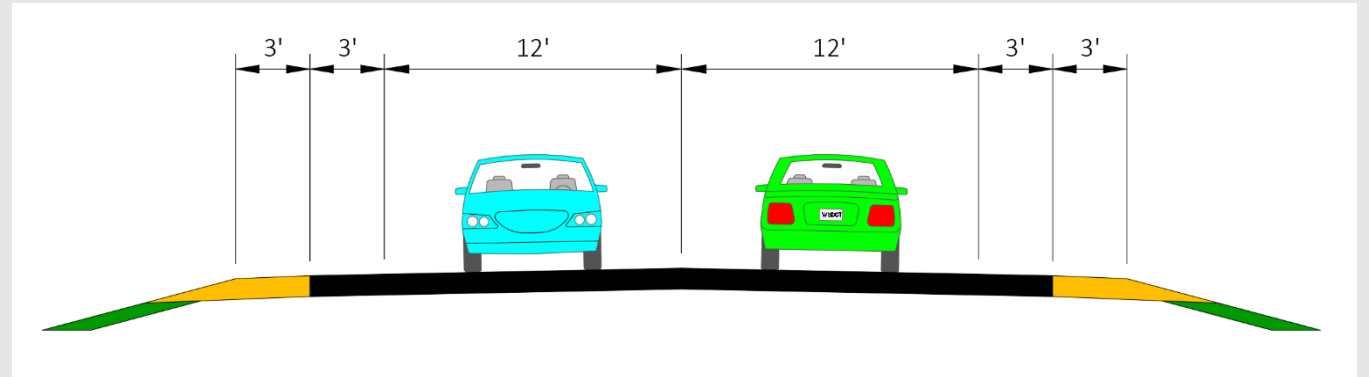
- Concrete repair
  - Lanes
- Mill and overlay 3.5" asphalt
  - Paved Shoulders
- Existing curb and gutter planned to remain



# Design overview

## Section 4: US 151 to Commerce Court

- Pavement
  - Milling – 4" existing pavement
  - Paving – 5" asphalt
    - Resulting in 1" profile raise
- Replacing curb and gutter
- Add centerline and edgeline rumble strips



# Design overview

## Guardrail

- Replace all guardrail within project limits
  - Update end terminals
  - Lengthen as needed
  - No planned access changes



End Terminal

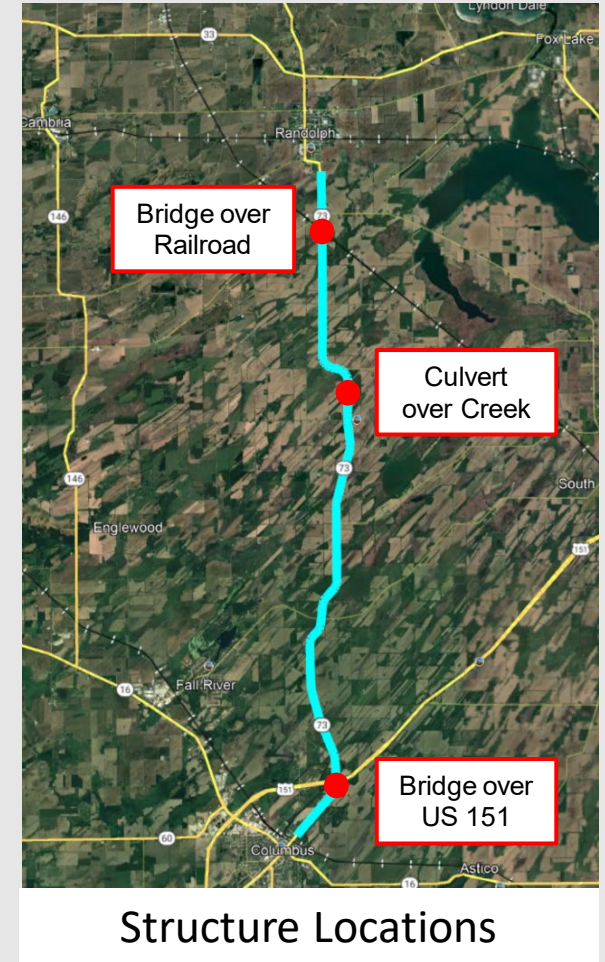


End Terminal

# Design overview

## Structures

- Bridge over US 151
  - Concrete Overlay, Deck and Surface Repair
  - Expansion Joint Replacement
- Bridge over the Railroad
  - Concrete Overlay, Deck and Surface Repair
  - Expansion Joint Replacement
- Culvert over Creek
  - Replace culvert

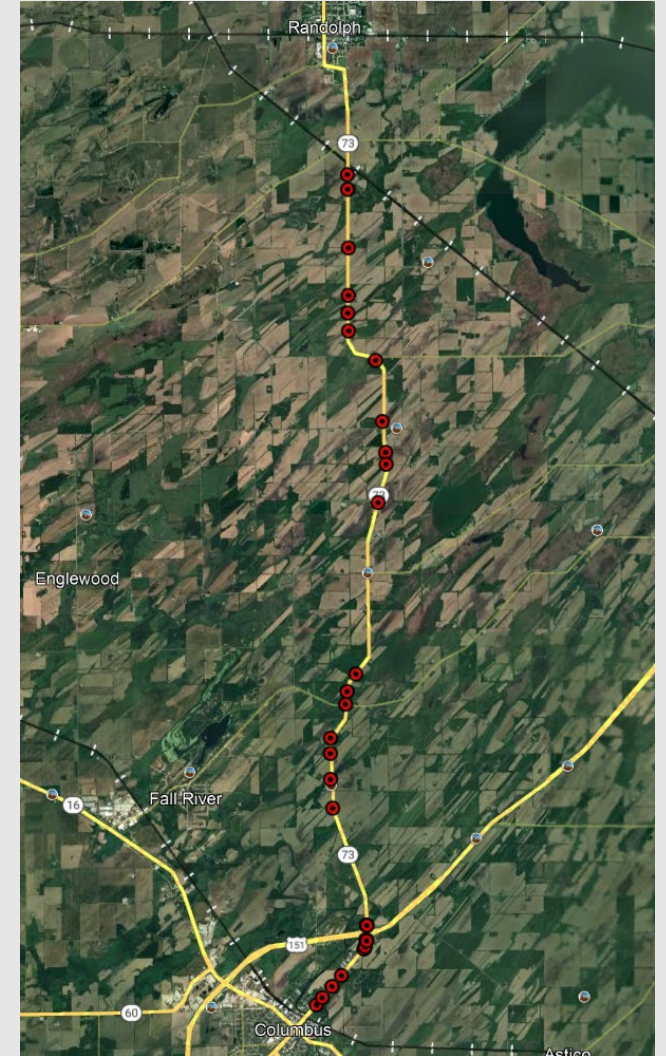




# Design overview

## Drainage

- Replace 22 existing culverts
- Replace 3 endwalls



# Design overview

## New sidewalk

- Add sidewalk to connect to Rotary Park



# Recent activity

- Sent initial coordination letters
- Survey Completed
- Drafted 30% plans
- Began drafting the environmental report
- Local officials meeting



# What is next?

- Environmental report  
February 2025
- Right-of-Way process begins  
September 2025
- 2<sup>nd</sup> Public Information Meeting  
January 2026
  - Tentative date
- Real estate acquisition complete  
November 2027
  - Likely at guardrail and culverts
- Final plans  
November 2027
- Construction  
Summer 2031
  - Could be as early as Summer 2028 (if funding allows)



# Thank you for your time

If you have any comments, questions, or concerns please  
send us an email, give us a call, or send us mail at **2101  
Wright St, Madison, WI 53704**





# Project contact information

Marc Schweiger

[Marc.Schweiger@dot.wi.gov](mailto:Marc.Schweiger@dot.wi.gov)

(608) 245-2633

Josh Koebernick

[Joshua.Koebernick@dot.wi.gov](mailto:Joshua.Koebernick@dot.wi.gov)

(608) 246-3859

Emily Kendall

[Emily.Kendall@dot.wi.gov](mailto:Emily.Kendall@dot.wi.gov)

(608) 246-3881

