

March, 17<sup>th</sup> 2026



# **WIS 19**

## **Maunasha River Bridge to Palmer St**

### **Project 3050-06-71**

Public Involvement Meeting  
(Marshall Elementary School Library, Marshall, WI)

Hello and welcome to the public involvement meeting for proposed improvements along Highway 19 between Marshall and Waterloo in Dane and Jefferson Counties.

# Presentation agenda

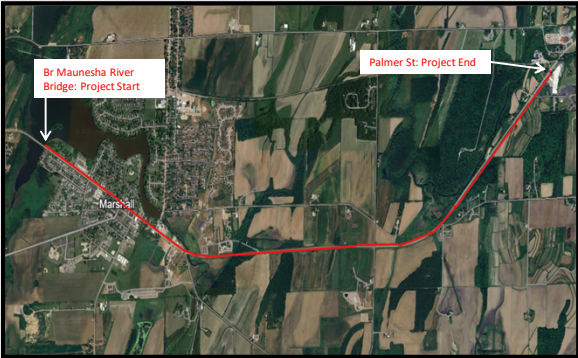
1. Project location
2. Purpose and need
3. Proposed improvements
4. Real estate and traffic impacts
5. Project schedule
6. Contact information



Here is an overview of the presentation as we'll discuss the project location and why these proposed improvements are necessary. We'll share an overview of the preliminary design plans along with potential real estate and traffic impacts. The presentation will wrap up by reviewing the project schedule and providing project staff contact information.

# Project location

- 4.3 miles of WIS 19
- Village of Marshall, Town of Medina, City of Waterloo
- Dane and Jefferson Counties
- Mauneshia River Bridge to Palmer Street

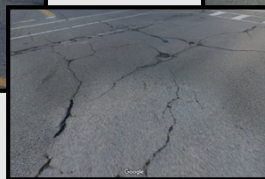


This project will cover 4.2 miles of Highway 19 within the Village of Marshall, Town of Medina, City of Waterloo. The project limits extend between the Mauneshia River Bridge in Marshall and Palmer Street in Waterloo.

# Project purpose and need

## Pavement deterioration and roadway safety

- Cracking and rutting



The purpose of this project is to improve the safety, comfort, and longevity of the highway. This section of Highway 19 is exhibiting pavement cracking and wheel path rutting. These pavement distresses are increasing both safety concerns and maintenance costs. If no action is taken this roadway will continue to deteriorate thus increasing future maintenance costs.

# Project purpose and need

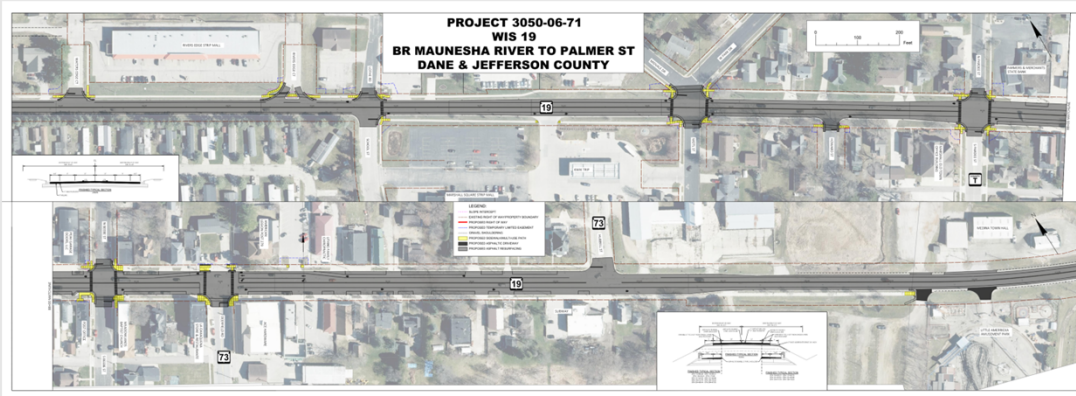
## Non-ADA compliant curb ramps



In addition to the roadway, Highway 19 has curb ramps within The Village of Marshall that are not in compliance with the current Americans with Disabilities Act (ADA) standards. Pedestrian access will be maintained on at least one side of Highway 19 during the curb ramp upgrades.

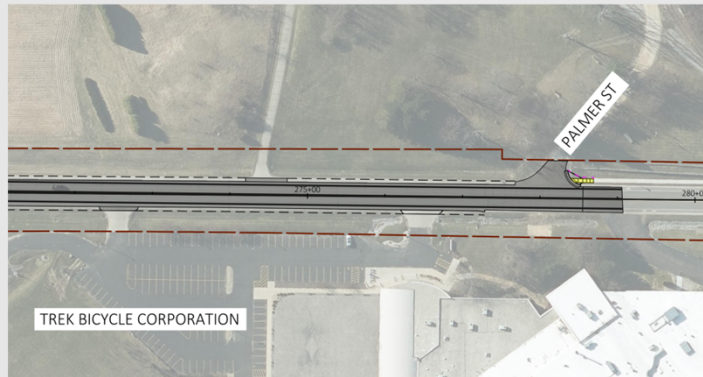
# Project purpose and need

## Non-ADA compliant curb ramps - Marshall



# Project purpose and need

## Non-ADA compliant curb ramp - Waterloo



# Project purpose and need

## Structure rehabilitation needs

- Damaged concrete surfaces
- Slope deterioration
- Approach slab settlement
- Unsealed cracks



# Project purpose and need

## Roadside safety device condition

- Rotten posts/blocks
- Missing hardware
- Grading needs
- Signs of damage
- Objects too close



# Proposed improvements

## Design Overview

- Resurface pavement
  - Urban
    - Mill off four-inches asphalt
    - Pave four-inches asphalt
  - Rural
    - Mill off two-inches asphalt
    - Pave four-inches asphalt
- Reconstruct curb ramps
- Rehabilitate structures
- Repair or replace beam guard



The preliminary design for this project contains multiple proposed improvements. These improvements include resurfacing of the existing roadway, and curb ramp upgrades as discussed previously.

# Real estate impacts

- Permanent right of way needs
  - Very minor acquisition at Howard Street
- Temporary easement needs
  - Small areas around curb ramps for construction or staging



The curb ramp upgrades will require minor right of way acquisitions within the Village of Marshall. The WisDOT Southwest Region real estate section will be reaching out to the impacted parcels to begin the real estate acquisition process.

## Traffic impacts

- Flagging operations will be used throughout the project
- Temporary traffic signals will be used during the bridge structure work to maintain alternating one-way traffic
- Box Elder Road will be closed for approximately one to two months during structure work
- Business, residential, and emergency access will be maintained at all times
- Pedestrian accommodations for sidewalk closures



During construction, Highway 19 traffic will remain open as construction crews will use flagging operations. Residential and commercial access will be maintained during construction. There will also be pedestrian accommodations for sidewalk closures during the curb ramp upgrades.

# Project schedule

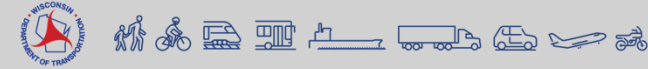
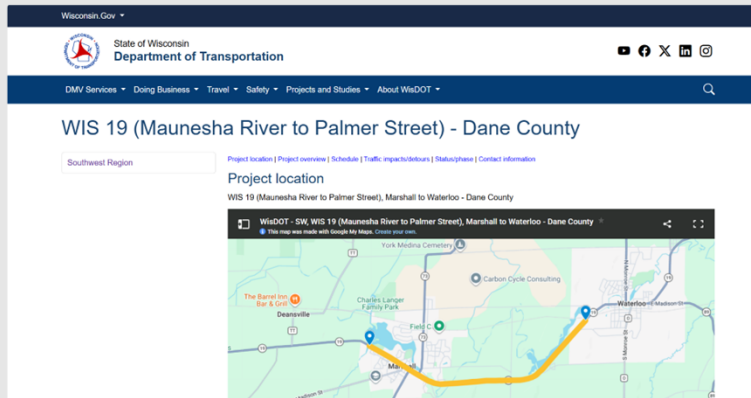
- Environmental document May 2026
- 60% preliminary plans May 2026
- Real estate acquisitions End of 2026-2028
- Final plans approved November 2028
- Construction 2029



This project is currently scheduled to be constructed in 2029 with any real estate acquisitions happening between 2026 and 2028. The preliminary plans and environmental document are scheduled to be completed in 2026. As the project continues to develop, updated information will be added to the project website.

# Project website

- <https://wisconsin.gov/Pages/projects/by-region/sw/wis19-marshall/default.aspx>



Additional information about the project can be found on the Highway 19 project website. The website can be found at [wisconsin.gov](https://wisconsin.gov/Pages/projects/by-region/sw/wis19-marshall/default.aspx). This website will continue to be updated as the project progresses.

# Contact Information

- Steve Porter, P.E.
  - [steve.porter@dot.wi.gov](mailto:steve.porter@dot.wi.gov)
  - (608) 243-3366
- Mailing Address
 

Attn: Steve Porter  
WisDOT SW Region  
2101 Wright Street  
Madison, WI 53704
- Brad Groh, P.E.
  - [bradg@jt-engineering.com](mailto:bradg@jt-engineering.com)
  - (608) 270-8852

**In This Together**  
A quick guide to help your business prepare for road construction

- 1 ORGANIZE EARLY**
  - Learn more about the project and its timeline
  - Develop questions for WisDOT staff
  - Check in with neighboring businesses and/or local business organizations
  - Can you partner on promotions, events or materials?
  - Have you established a point of contact?
- 2 STAY ENGAGED WITH THE PROJECT**
  - Attend public involvement meetings!
  - Make note of contact information for the project team, and voice the unique needs of your business
  - Learn more about project resources
    - Is there a construction website?
    - Is there a mailing list?
    - Is there an email distribution?
- 3 HELP CUSTOMERS FIND YOU**
  - Consult with project staff to determine when and where there may be closures or detours
  - Ask about temporary signage options
  - Consider how best to inform customers
  - Maybe a joint communication with neighboring businesses for employees and customers about traffic and parking?
  - Maybe a feature article in a customer-facing newsletter?
  - Maybe a social media post shared by businesses and local community pages?
- 4 DEVELOP AND ACTIVATE YOUR GAME PLAN**
  - Check out case studies at [wisconsindot.gov/igtgether](http://wisconsindot.gov/igtgether)
  - Connect with project contacts to discuss any potential obstacles specific to your business such as deliveries, operational hours, employee parking, etc.
  - Check in with employees
    - Is there a consistent message for customers?
    - Are there temporary changes to shift times, parking or deliveries?
- 5 END OF CONSTRUCTION**
  - Stay positive, be flexible and know that WisDOT staff are available to help
  - Collect any temporary signage
  - Let customers know!
    - Post on an event?
    - Post on social media?
    - Add to a newsletter?

Remember, we are In This Together! For more planning ideas, tips and resources: [wisconsindot.gov/igtgether](http://wisconsindot.gov/igtgether)

**Preparation Roadmap**  
Tip to stay engaged with the project and prepare your business for success - from start to finish

**1 Start**

- Engagement: Meet with project staff to learn more about the project and its timeline.
- Identify everything business: Identify all business operations, employees, and equipment that may be affected by the project.
- Get your neighbors partners and other parties involved: Share information about the project and its timeline with neighboring businesses and other parties involved.
- Plan your game plan: Develop a plan for how your business will operate during the project.
- Post notices and activate your plan: Post notices to inform customers and activate your plan.

**2 Before Construction**

- Sign business coordinates: Sign business coordinates to inform project staff of your business location.
- Connect early and often with the project team: Connect early and often with the project team to discuss any potential obstacles.

**3 During Construction**

- Stay positive, be flexible and know that WisDOT staff are available to help: Stay positive, be flexible and know that WisDOT staff are available to help.
- Collect any temporary signage: Collect any temporary signage.
- Let customers know: Let customers know about the project and its timeline.

**4 After**

- Post notices and activate your plan: Post notices and activate your plan.

**In This Together**  
Temporary Signage Guide

When to Use Temporary Business Signage

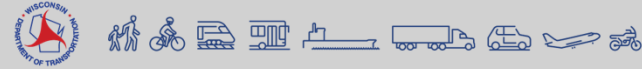
Design your sign!

Before Construction

Construction

Post Construction

Key points to discuss



Thank you for taking the time to watch this presentation and participate in our public involvement process. This slide contains the project team's contact information. Please do not hesitate to reach out with your questions or concerns.