

# WIS 16

## La Crosse – Sparta

### US 53 to WIS 35

Public Involvement Meeting

Main Street Library-Auditorium  
800 Main Street, La Crosse, Wisconsin 54601

April 7, 2025





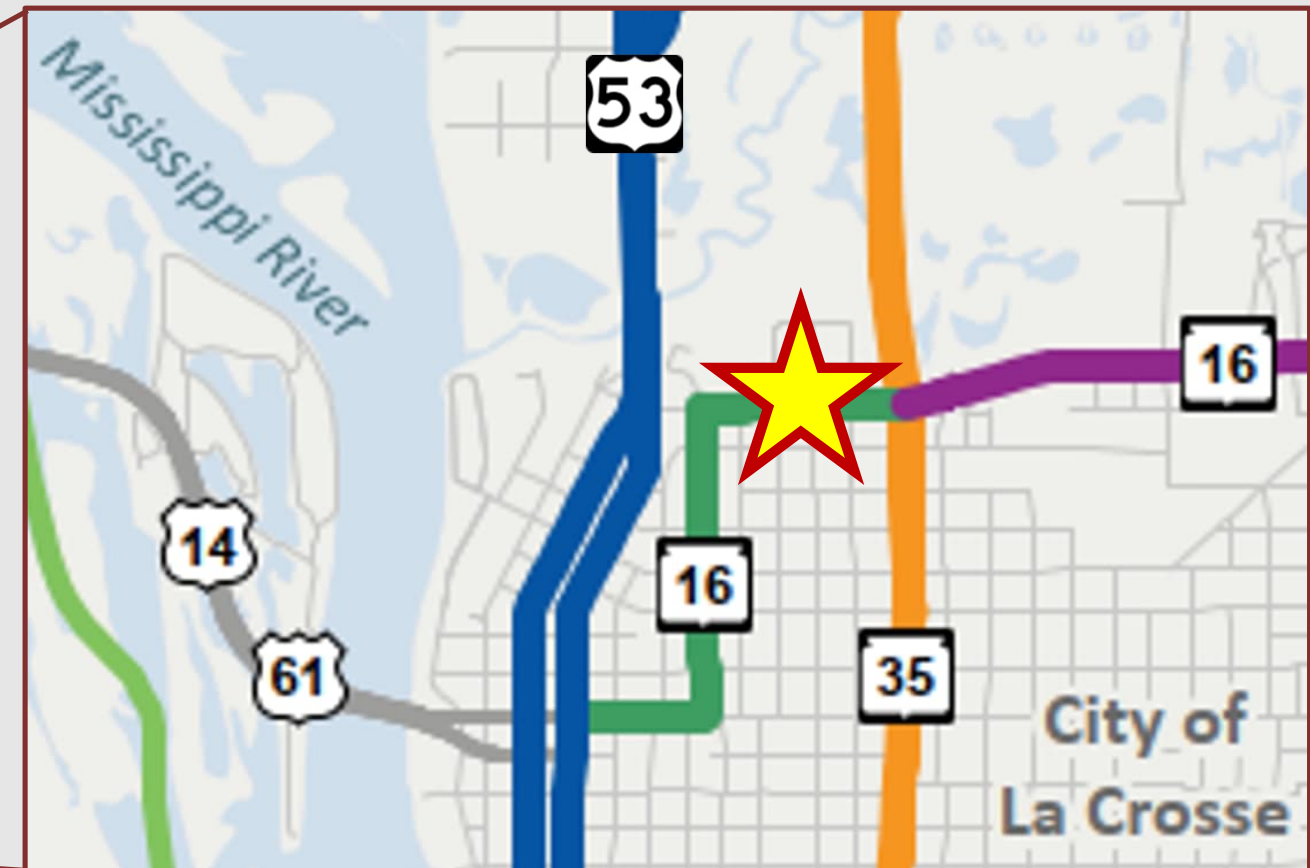
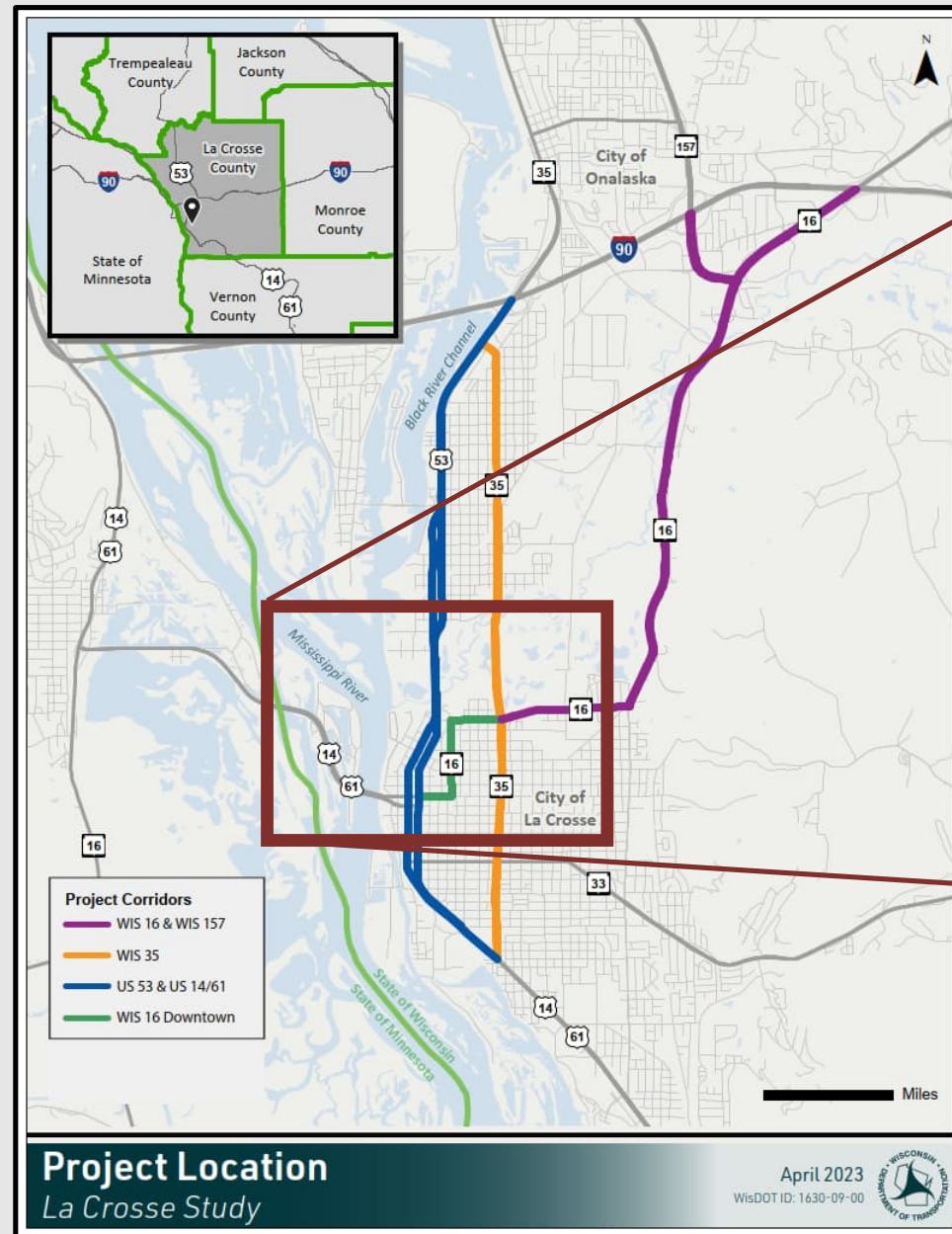
# Presentation Outline

- Project location
- Project needs
- Project funding
- Project overview
  - Existing facility characteristics
  - Typical section alternatives
- Timeline for project delivery
- Next steps





# Project Location





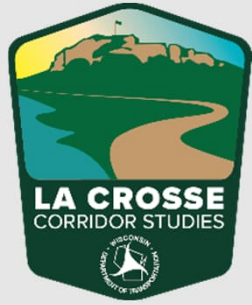


# Project Location



WIS 16 (La Crosse Street): 7<sup>th</sup> Street to 11<sup>th</sup> Street





# Project Needs

- Address existing roadway pavement deficiencies
- Address existing safety conditions
- Improve pedestrian and bicycle accommodations





# Project Funding

The WIS 16 project is being funded through the La Crosse Corridor Majors Program which includes improvements to WIS 35, US 53, US 14/61 and WIS 16 through the City of La Crosse.





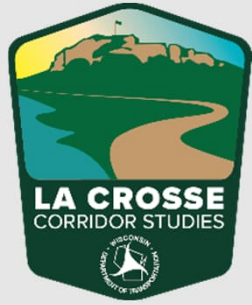


# Project Overview

## Existing Facility Characteristics

- Typical section
  - Undivided two-lane urban w/ parking on both sides
- Existing right of way
  - 66 feet
- Intersection control
  - Stop-controlled on side roads





# Project Overview

## Existing Facility Characteristics

- Pedestrian accommodations
  - Sidewalk on both sides
- Bicycle accommodations
  - None designated
- Transit
  - Route 4 w/ stops along La Crosse Street







# Project Overview

## Typical Section Alternatives

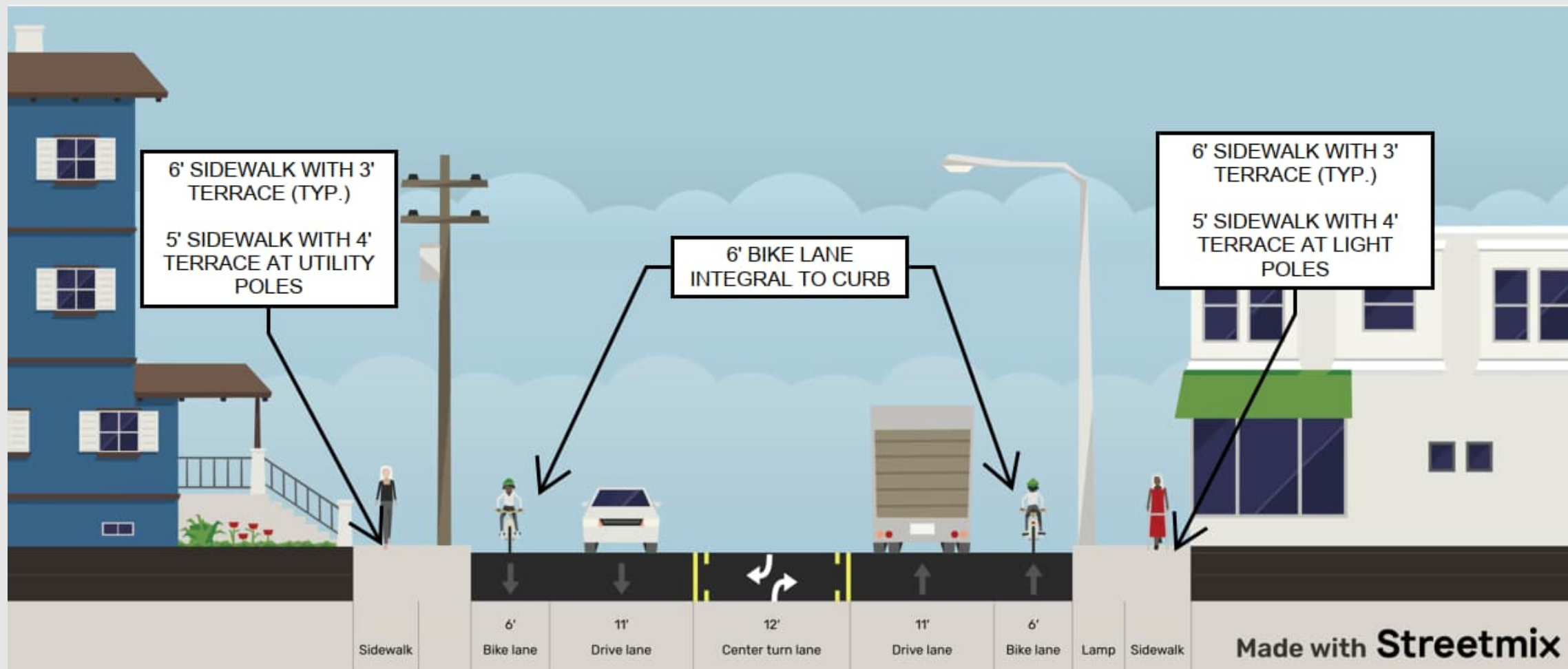
- Features considered
  - Pedestrian accommodations
  - Bicycle accommodations
  - Left-turn accommodations
  - On-street parking
  - Overhead utility accommodations
  - Street lighting





# Project Overview

## Typical Section Alternatives: Alternative A



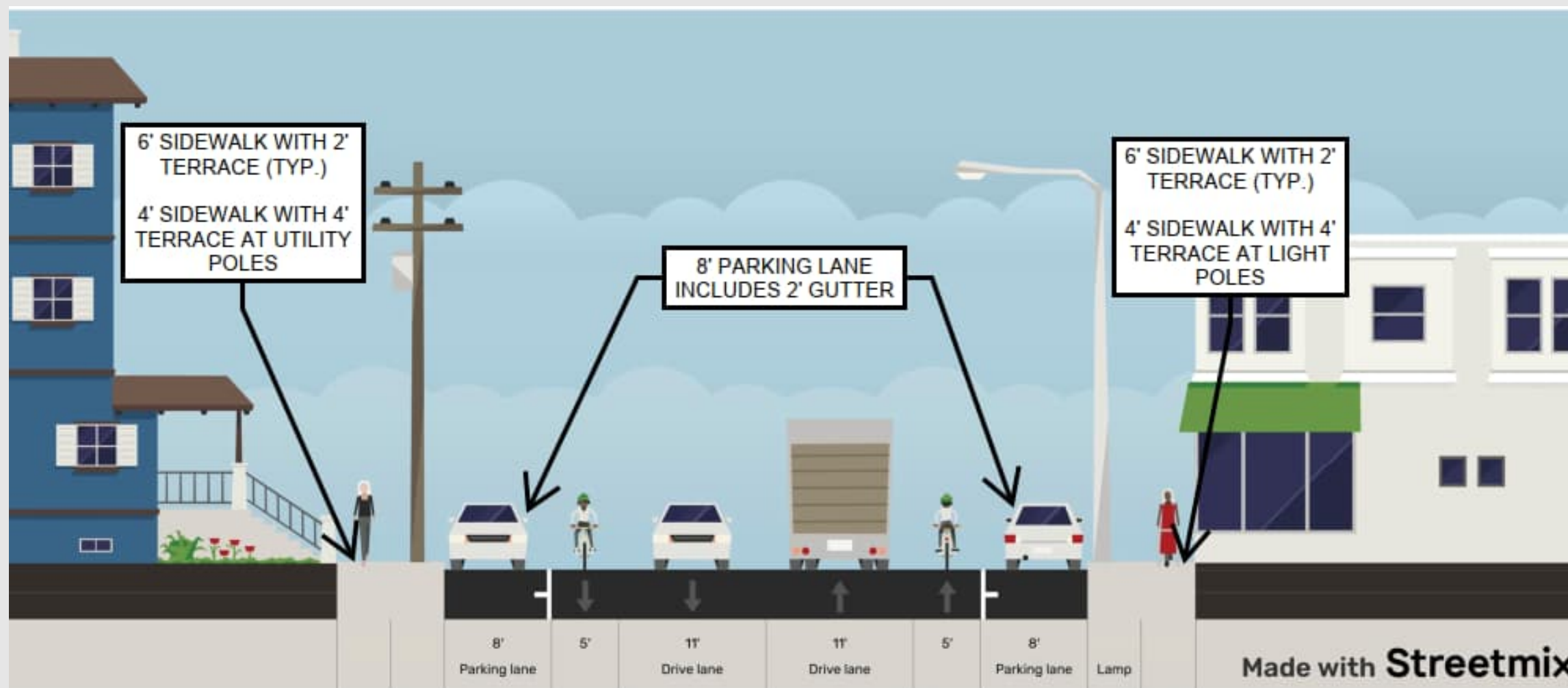
- ☒ PEDESTRIAN ACCOMMODATIONS
- ☒ BICYCLE ACCOMMODATIONS
  - ☒ ON-STREET
  - ☐ RAISED BIKE LANES
- ☐ ON-STREET PARKING
  - ☐ BOTH SIDES
  - ☐ ONE SIDE
- ☒ TWO-WAY LEFT-TURN LANE





# Project Overview

## Typical Section Alternatives: Alternative B



- ☒ PEDESTRIAN ACCOMMODATIONS
- ☒ BICYCLE ACCOMMODATIONS
  - ☒ ON-STREET
  - ☐ RAISED BIKE LANES
- ☒ ON-STREET PARKING
  - ☒ BOTH SIDES
  - ☐ ONE SIDE
- ☐ TWO-WAY LEFT-TURN LANE

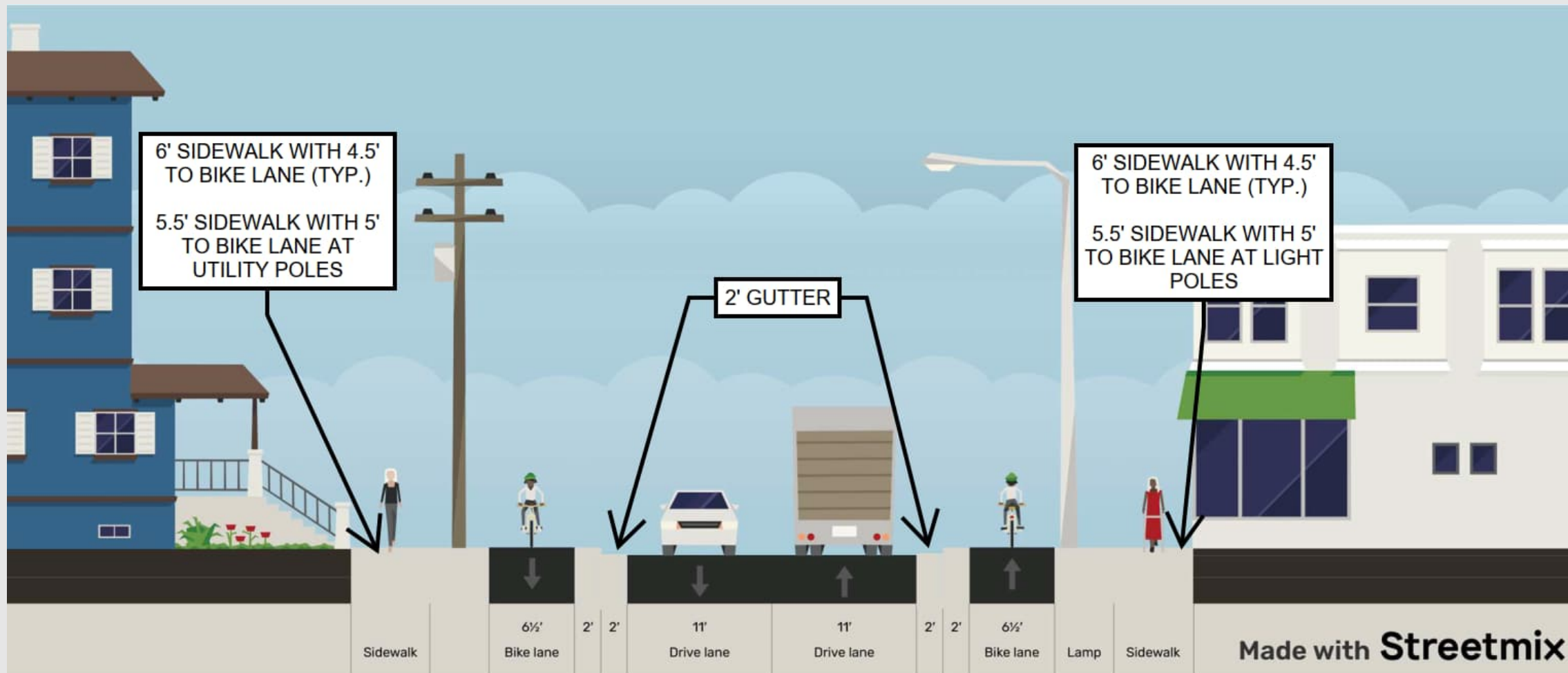






# Project Overview

## Typical Section Alternatives: Alternative C

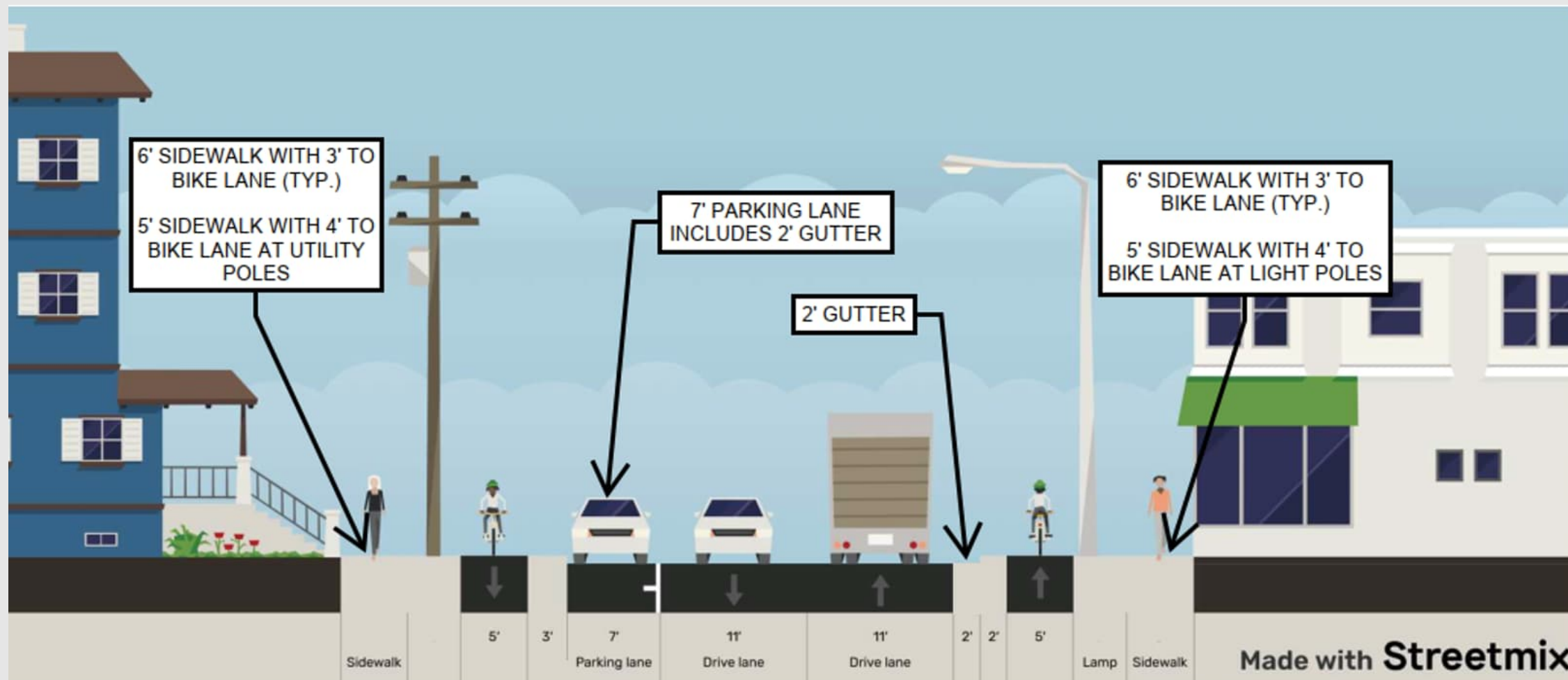


- ☒ PEDESTRIAN ACCOMMODATIONS
- ☒ BICYCLE ACCOMMODATIONS
  - ☐ ON-STREET
  - ☒ RAISED BIKE LANES
- ☐ ON-STREET PARKING
  - ☐ BOTH SIDES
  - ☐ ONE SIDE
- ☐ TWO-WAY LEFT-TURN LANE



# Project Overview

## Typical Section Alternatives: Alternative D



- ☒ PEDESTRIAN ACCOMMODATIONS
- ☒ BICYCLE ACCOMMODATIONS
  - ☐ ON-STREET
  - ☒ RAISED BIKE LANES
- ☒ ON-STREET PARKING
  - ☐ BOTH SIDES
  - ☒ ONE SIDE
- ☐ TWO-WAY LEFT-TURN LANE





# Project Overview

## Typical Section Alternatives: Seeking Feedback

- Submit public comments by April 21, 2025

**Public Involvement Meeting Comment Form**

Project ID 7575-09-01  
WIS 16  
La Crosse-Sparta  
US 53 to WIS 35  
La Crosse County

April 7, 2025

Please place this form in the comment box or mail by April 21, 2025, using the provided envelope. Comments can also be submitted to Cory Mikshowsky, P.E., WisDOT Project Manager, by email at [Cory.Mikshowsky@dot.wi.gov](mailto:Cory.Mikshowsky@dot.wi.gov) or by phone at (608) 789-6335.

Your project comments will assist us in developing a project that will serve the needs of the traveling public as well as the needs of the local community. In addition, comments specific to the WIS 16 typical section alternatives presented will assist in selecting a preferred typical section alternative.

Your input is welcomed and appreciated throughout the design process.

Name: \_\_\_\_\_

Address: \_\_\_\_\_

Daytime Phone Number (optional): \_\_\_\_\_

Email Address (optional): \_\_\_\_\_

Please provide your input regarding the following typical section elements by circling the appropriate importance level for each typical section element:

Typical Section Element	Level of Importance				
	Not Important	Slightly Important	Moderately Important	Important	Very Important
Pedestrian Accommodations	1	2	3	4	5
Bicycle Accommodations	1	2	3	4	5
On-Street Parking	1	2	3	4	5
Left-Turn Accommodations	1	2	3	4	5

1

\*\*See reverse side.

Comment Form – Page 1



Please provide your input regarding the following typical section elements by circling the appropriate importance level for each typical section element:

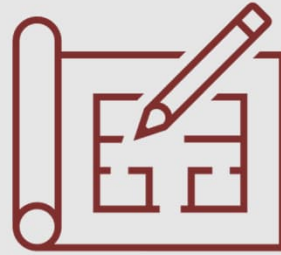
Typical Section Element	Level of Importance				
	Not Important	Slightly Important	Moderately Important	Important	Very Important
Pedestrian Accommodations	1	2	3	4	5
Bicycle Accommodations	1	2	3	4	5
On-Street Parking	1	2	3	4	5
Left-Turn Accommodations	1	2	3	4	5







# Timeline for Project Delivery



- Preferred Typical Section Selection – Spring 2025
- Preliminary Plans – Spring 2025
- Environmental Document Approval – Fall 2025
- Real Estate Acquisition – Summer 2026 to Fall 2027
- Final Plans – November 1, 2027





# Next Steps

- Submit public comments by April 21, 2025
- Public meetings and outreach will continue through the preliminary and final design phases
- Contact us with any questions or concerns

Cory Mikshowsky, P.E.

*WisDOT Project Manager*

 (608) 789-6335

 [Cory.Mikshowsky@dot.wi.gov](mailto:Cory.Mikshowsky@dot.wi.gov)



Project website







# WIS 16 La Crosse – Sparta US 53 to WIS 35

Public Involvement Meeting

Main Street Library-Auditorium  
800 Main Street, La Crosse, Wisconsin 54601

April 7, 2025



La Crosse Corridor Majors Program

4/7/2025

18

