



WIS 138

Cooksville – Stoughton

WIS 59 to Milwaukee St.

**Public Involvement Meeting
Dunkirk, WI**

April 2, 2025

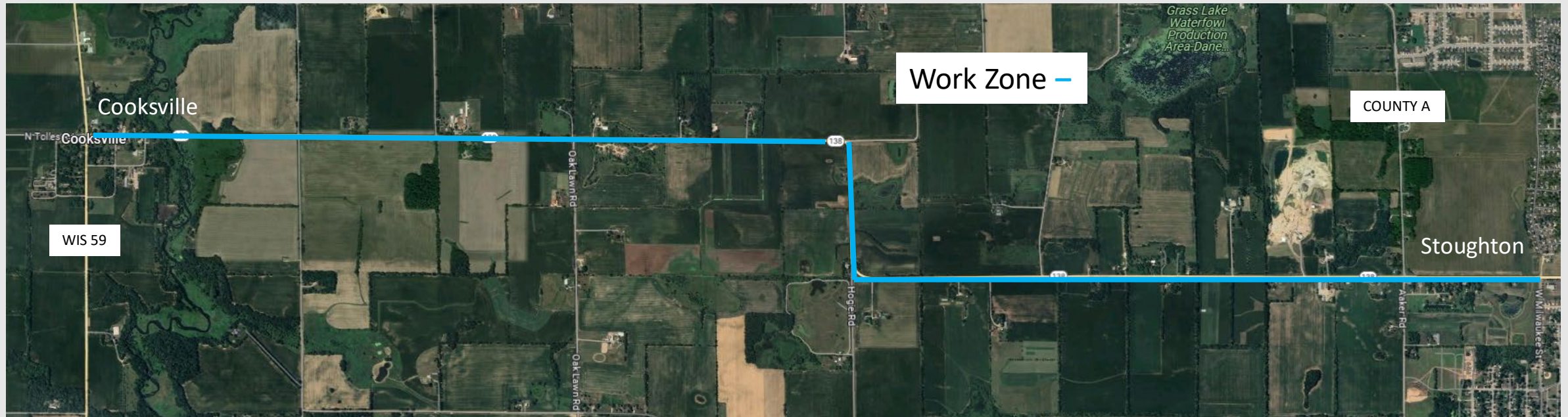
Presentation Overview

- Project Location
- Design Alternatives
- Highway Safety Improvement Program
- Traffic Impacts
- Project Schedule
- Business Coordination
- Project Website
- Contact Information



Project Location

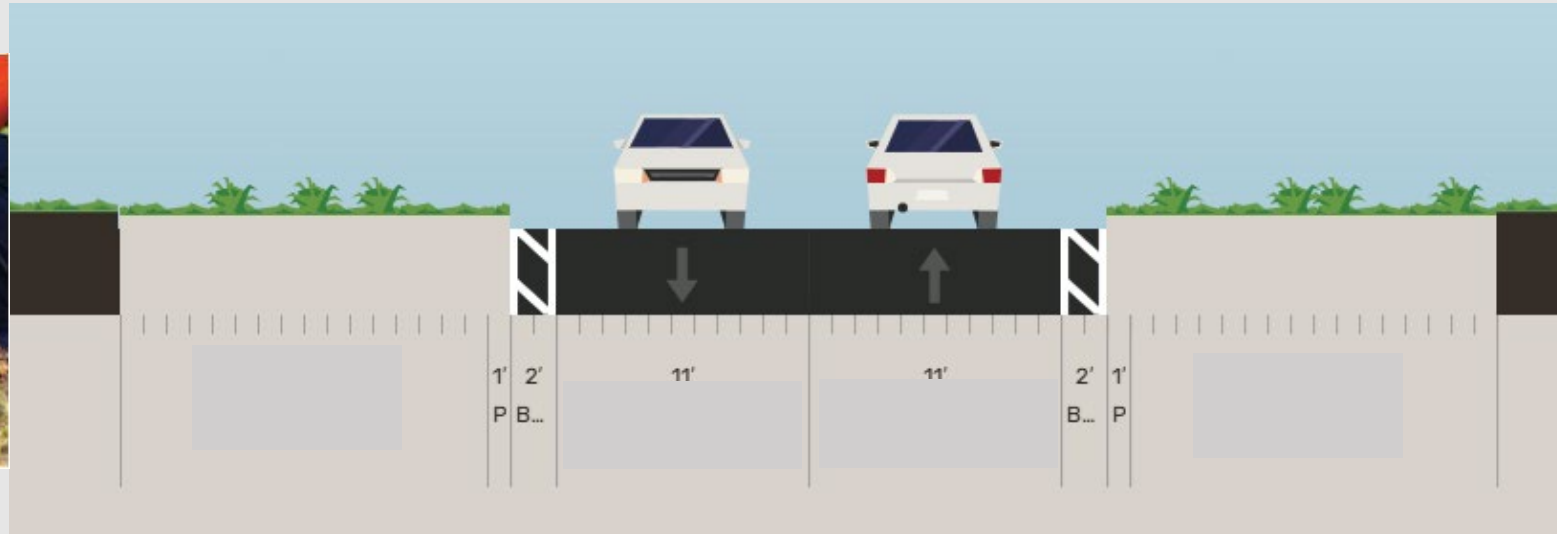
WIS 59 (Cooksville) to Milwaukee St. (Stoughton)



Design Alternative

Pavement

- Mill full 3.5-inch pavement surface and pave 4-inches HMA
 - Match into future intersection improvement project at WIS 59 in Cooksville
 - Construct safety edge to mitigate run-off the road crashes



2-FOOT PAVED
SHOULDER

1-FOOT UNPAVED
SHOULDER

Design Alternative Guardrail Replacement

- Badfish Creek Bridge – all four corners



Design Alternative

Guardrail Replacement

- Hogie Road intersection - southwest quadrant



Design Alternative

Turn Lanes

- Construct dedicated left turn lanes at County A / Aaker Rd intersection
 - Construct right turn lane for northbound traffic



Design Alternative

Turn Lanes Cont.

- Construct dedicated left turn lanes at County A / Aaker Rd intersection
 - Reconstruct right turn lane for southbound traffic



Design Alternative

Sight Distance

- Tree clearing to establish safe sight distance at Hogie Rd



Highway Safety Improvement Program

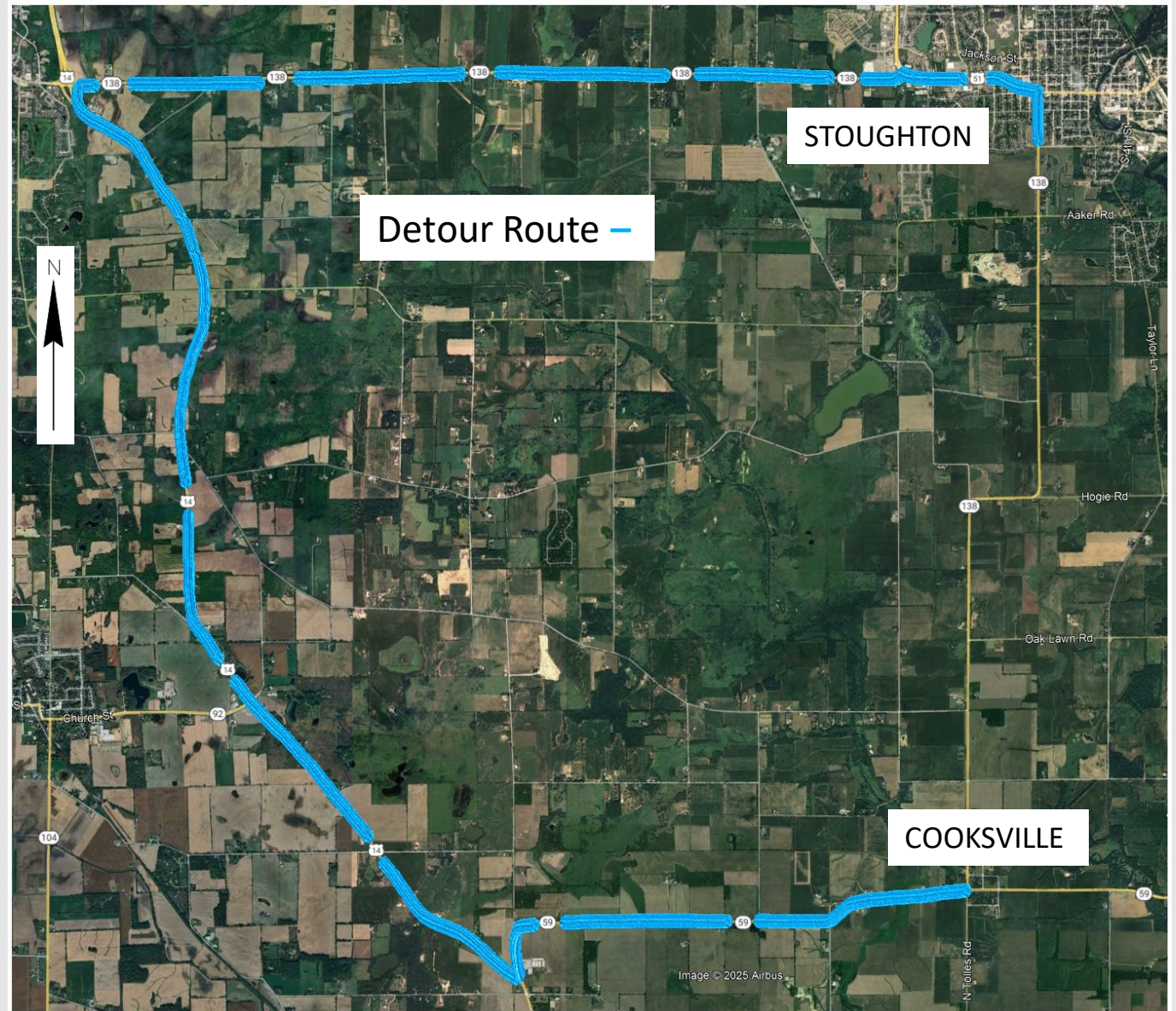
- What is it?
 - Program goal: achieve significant reductions in traffic fatalities and serious injuries on public roads.
 - Federal-aid program that funds projects with quick timeframes and smaller budgets.
 - Requires data-driven, strategic approach to improve the safety of the road while maintaining performance for years to come.



Traffic Impacts

Full closure with detour

- WIS 59 and US 14



Project Schedule

- Public involvement meeting Spring 2025
- Real estate acquisitions start Winter 2026
- Plans completed Fall 2028
- Construction year 2030 (adv. 2029)



Business Coordination

We're In This Together!

- Visit wisconsindot.gov/together
 - Tips, tools and resources
 - Business coordination guide
- Project team is here to help
 - What information would help you...
 - Inform customers about the project?
 - Coordinate with suppliers?
 - Communicate with employees?

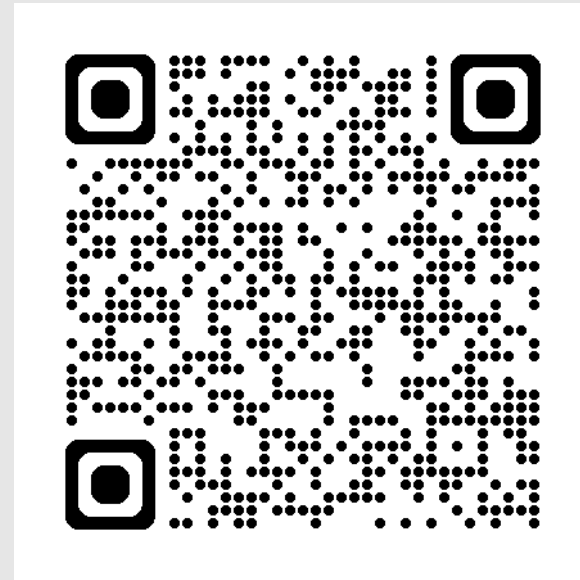


Project Website

- <https://wisconsindot.gov/Pages/projects/by-region/sw/wis138-danerock/default.aspx>

Wisconsindot.gov

- Projects and Studies
 - SW Region
 - Design Projects
 - Dane County



Contact Information

Project Manager

Cody Kammerzelt, P.E.

- Cody.Kammerzelt@dot.wi.gov
- (608) 243-5995

Region Communications Manager

Hannah Punzel

- Hannah.Punzel@dot.wi.gov
- (608) 246-7907

Mailing Address

Attn: Cody Kammerzelt
WisDOT SW Region
2101 Wright Street
Madison, WI 53704

