

# **WIS 131 Ontario–Tomah County A to Hiawatha Avenue**

Public Involvement Meeting (PIM)

**April 8, 2025**



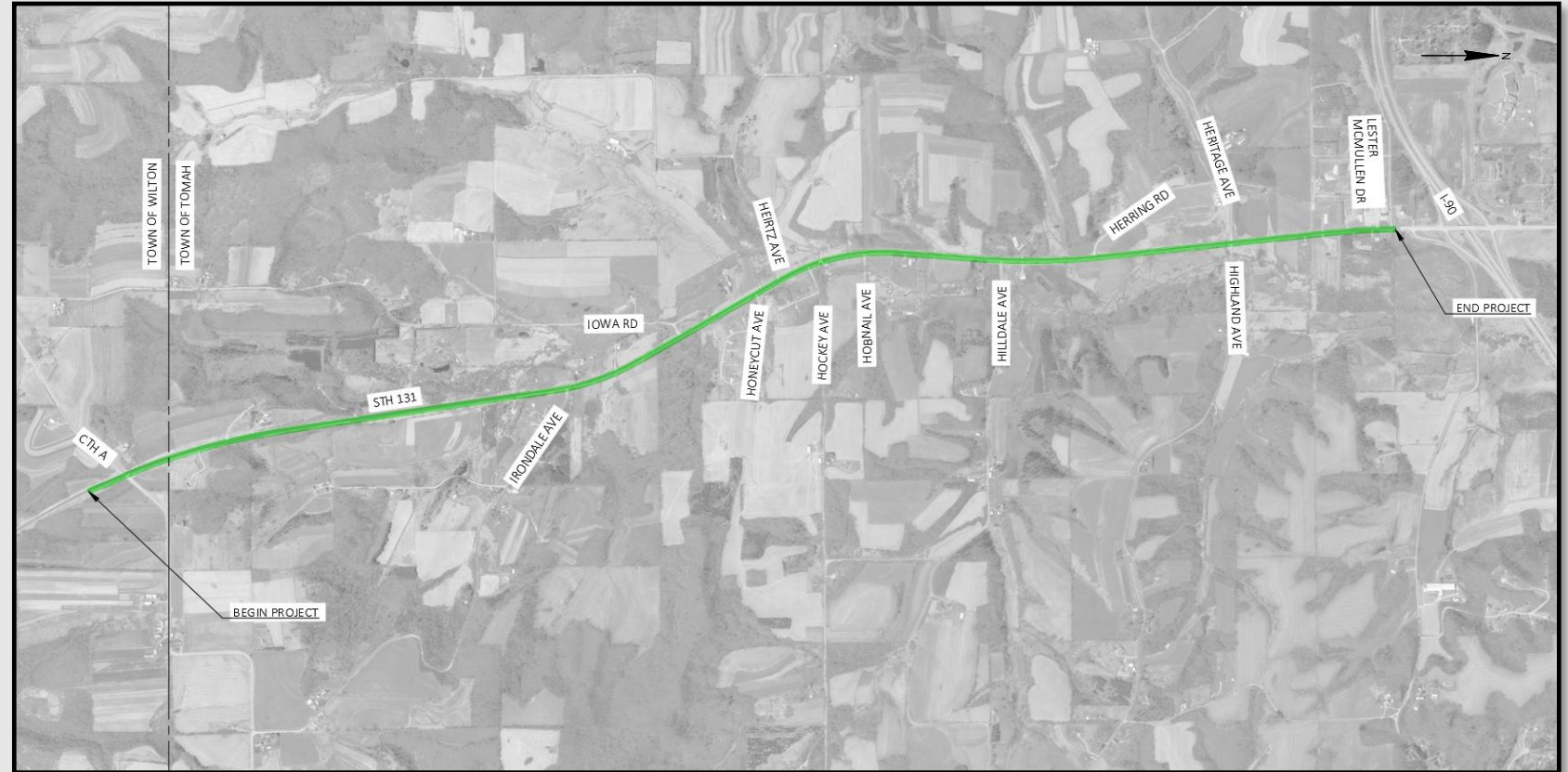
# WIS 131 PIM–Overview

- Project Overview and General Project Description
- Project Purpose and Need
- Proposed Improvements
- Traffic Control and Traffic Impacts
- Real Estate
- Current Schedule and Construction Cost



# Project Overview and General Description

- 4.2 miles
- Two-lane highway
- Minor arterial (WIS 131)
- Major collector (County A)



# Project Purpose and Need

- Deteriorating Pavement Conditions
  - WIS 131 evaluated for pavement condition in 2021. Pavement rated fair, but close to poor.
  - Increased traffic will continue to deteriorate pavement and increase service costs.
- Failing Culverts and Aging Guardrail
- Severe Crashes at County A Intersection
  - Five reported crashes at County A and WIS 131, of these one fatal, one involved incapacitating injury, and two involved possible injuries.

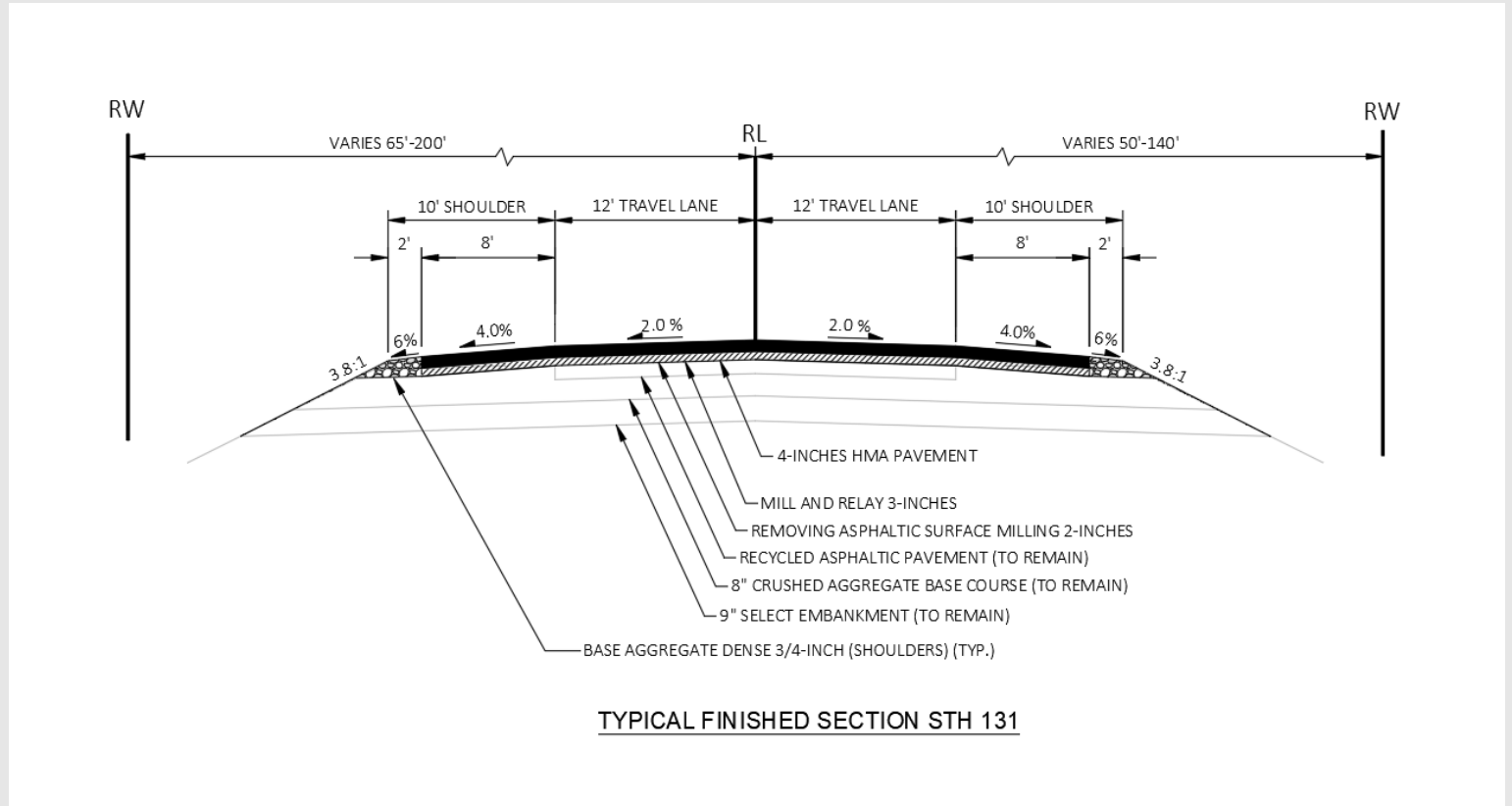


Source: Google Maps



# Proposed Improvements

- Mill, Mill and Relay and Overlay
  - Widen shoulders
- Replace Existing Guardrail
  - Approximately 6,200 feet of new guardrail





# Proposed Improvements

- Replace Deteriorating Culverts
- Ditching to Improve Drainage



# Proposed Improvements

- Single-Lane Roundabout
  - County A and WIS 131 Intersection
  - Improves Intersection Skew
  - Removes Second Southbound Travel Lane South of County A



# Traffic Control

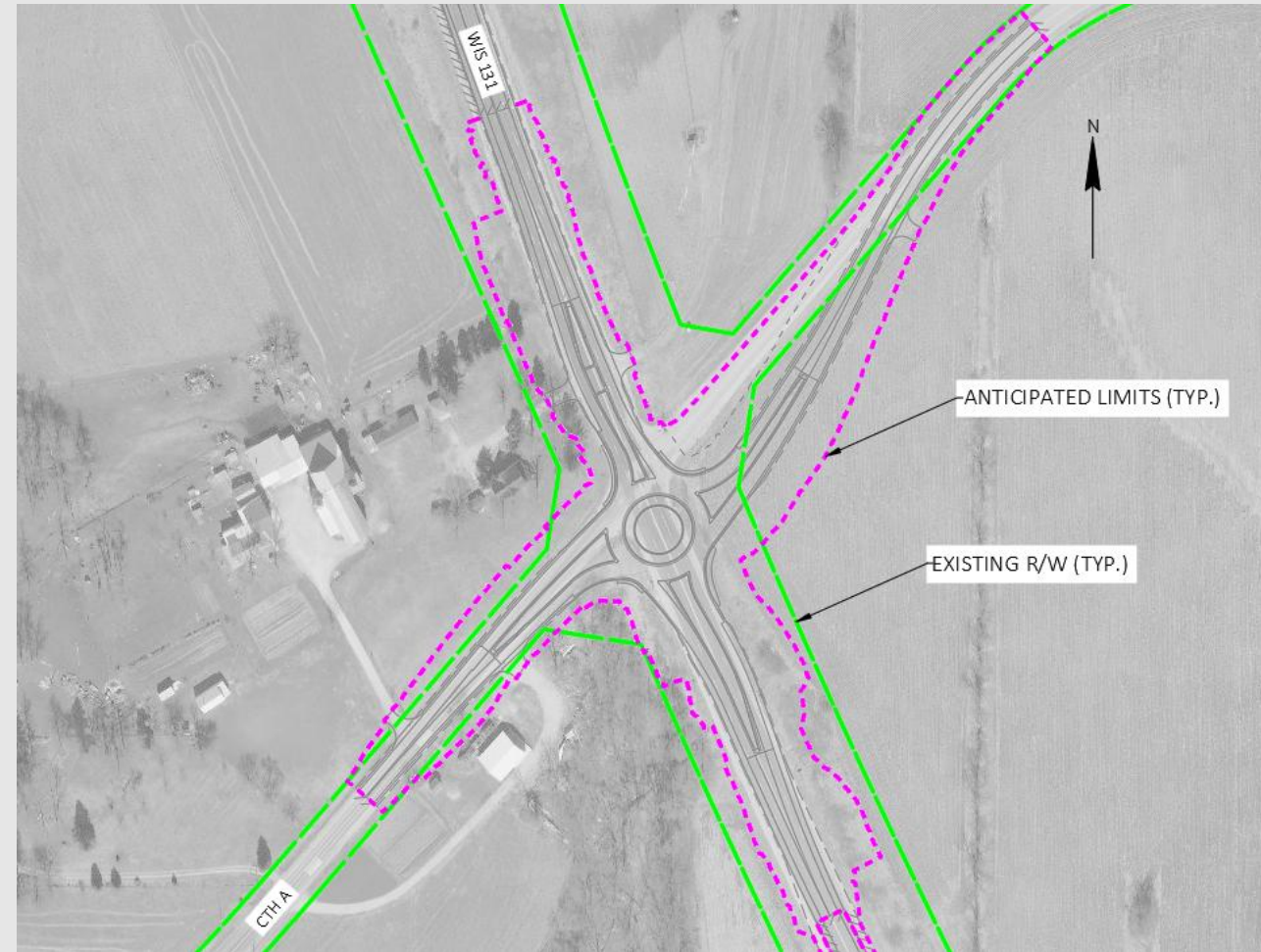
- During construction, WIS 131 will remain open to traffic except for a short-term full closure to finish the roundabout.
  - WIS 131 will be detoured during this period
- County A will be sequenced to always maintain one leg open.
- Flagging operations will be used as needed.
- Access will be maintained to residents and businesses throughout the duration of the project.





# Real Estate

- Proposed roundabout construction will require the purchase of right of way (R/W).
  - Fee R/W and temporary limited easements (TLE) are anticipated.
  - Real estate acquisition will begin in spring 2026.



# Schedule and Cost

- 60 Percent Plans–August 2025
- Real Estate Acquisition–Early 2026
- Final Plans–August 2029
- Construction Anticipated–Summer 2030
- Approximate Construction Cost–\$6,000,000 to \$7,000,000
  - Highway Safety Improvement Program (HSIP) funding received for the widened shoulders and roundabout construction.



# Questions?

## Contact Information

**Jered Lex, P.E.**


*WisDOT Project Manager*

 (608) 785-9956

 [Jered.Lex@dot.wi.gov](mailto:Jered.Lex@dot.wi.gov)

**Robert Jack, P.E.**

*Consultant Project Manager*

 (608) 251-4843

 [Robert.Jack@strand.com](mailto:Robert.Jack@strand.com)

