



WIS 11

(White Street to East Benton limits)

Lafayette County

Public Involvement Meeting

Benton, WI

October 16, 2024

Agenda

- Project location
- Purpose and need
- Proposed improvements
- Historic and recreation resources
- Traffic control
- Schedule
- Business coordination
- How to stay informed
- Project contacts



Project Location



Purpose and Need

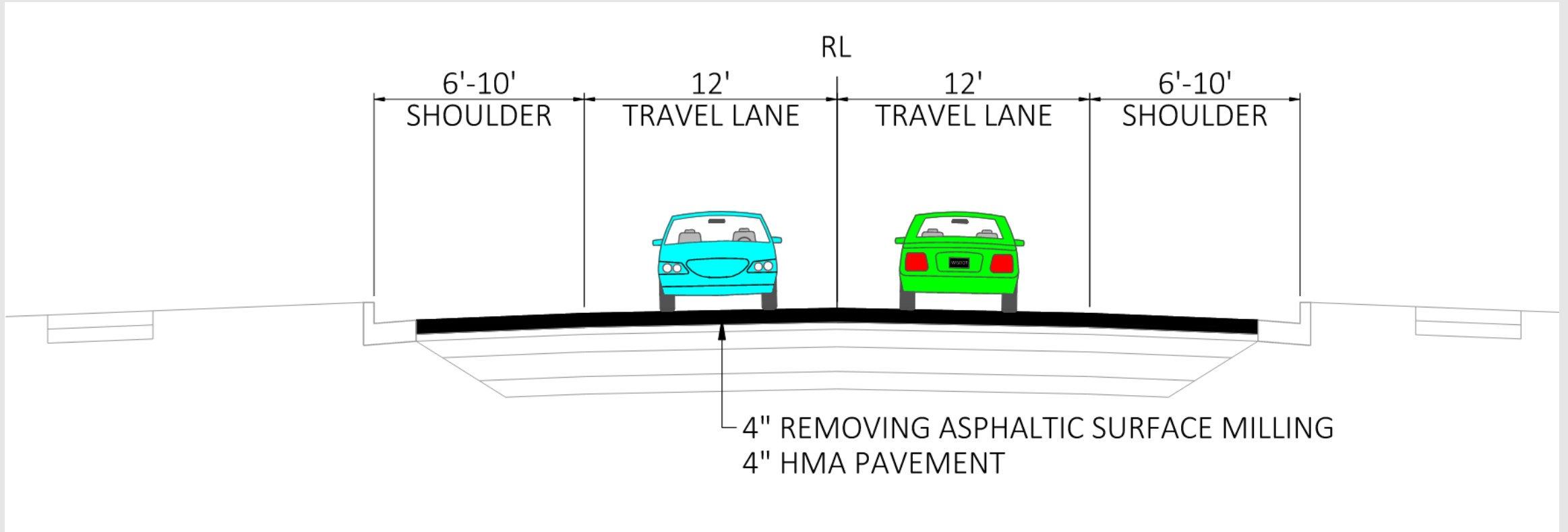


Pavement deterioration



Curb ramps

Project Improvements – Mill and Overlay



Project Improvements – Curb Ramp Improvements



Existing



Proposed

Historic and Recreation Resources

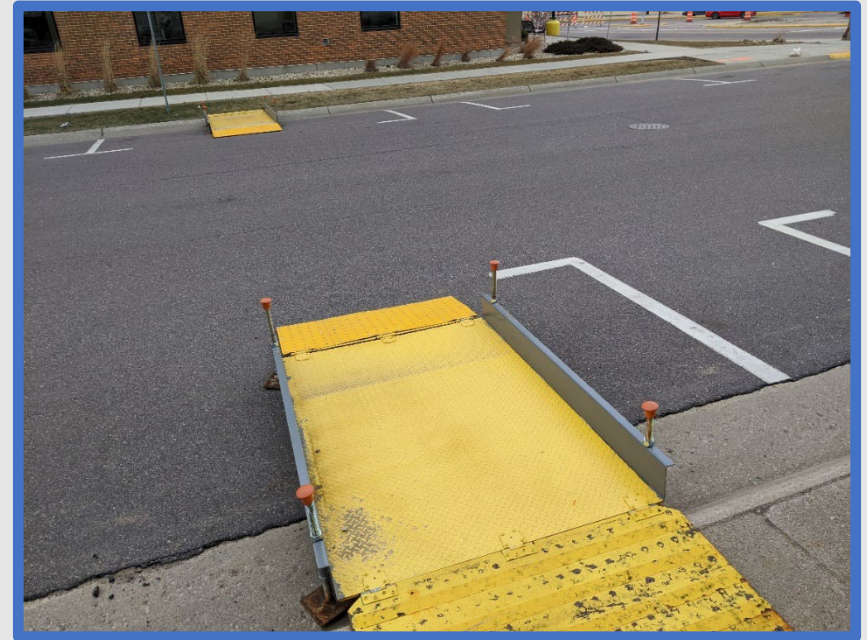
- Park/recreation resources
 - Village park
- Historic resources
 - Primitive Methodist Church
 - Benton Christian Community Church
 - Isabelle Quinlan house
 - Benton municipal building
 - Kearns grocery
 - St. Patrick's Church



Village park

Traffic Control

- WIS 11 detour
- Flagging for local traffic
- Sidewalk closures and detours



Schedule

- Project initiation – Spring 2024
- Public Involvement Meeting – October 2024
- Environmental study – January 2025
- Design – 2024 to 2027
- Pubic Involvement Meeting – 2027
- Roadway construction – 2028



Business Coordination


We're in This Together!

- Visit wisconsindot.gov/together
 - Tips, tools and resources
- Project team is here to help
 - What information would help you
 - Inform customers about the project?
 - Coordinate with suppliers?
 - Communicate with employees?



How to stay informed

Wisconsin.Gov ▾

 State of Wisconsin
Department of Transportation

[DMV Online Services](#) ▾ [DMV Info](#) ▾ [Doing Business](#) ▾ [Travel](#) ▾ [Safety](#) ▾ [Projects and Studies](#) ▾ [About WisDOT](#) ▾

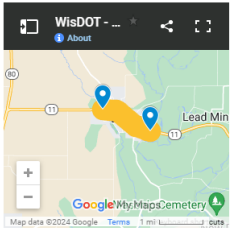
[Project location](#) | [Project overview](#) | [Schedule](#) | [Traffic impacts/detours](#) | [Status/phase](#) | [Contact information](#)

WIS 11 (White Street to East Benton limits) - Lafayette County

Southwest Region

Project location

WIS 11 (White Street to East Benton limits), Benton - Lafayette County



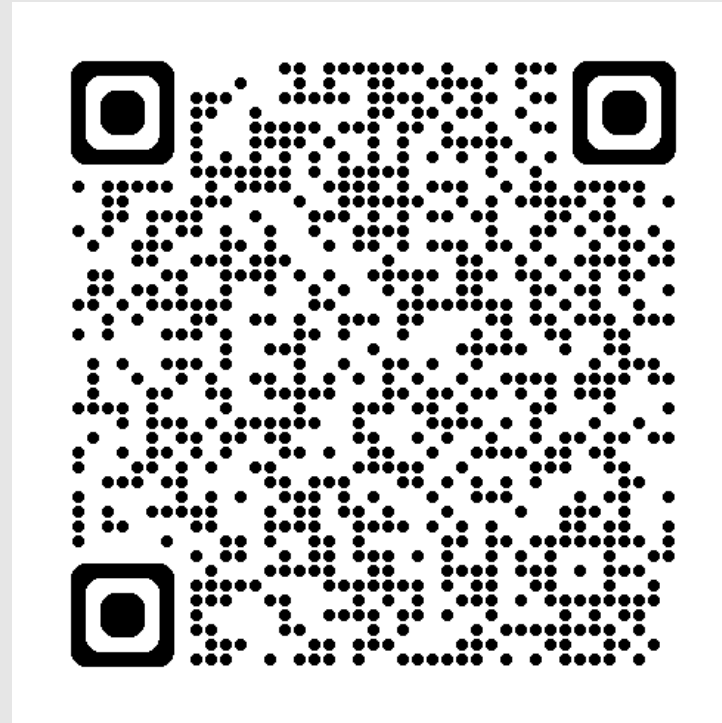
[View WIS 11 \(White Street to East Benton limit\) project on a larger map](#)

Project overview

The Wisconsin Department of Transportation (WisDOT) is developing preliminary plans for a resurfacing project on WIS 11. The 1.12-mile long project begins at White Street and ends at the East Benton Village limit.

Proposed improvements:

- Resurface existing pavement (4" mill and overlay)



Project Contacts

- WisDOT Project Manager: Cody Kammerzelt, P.E.
 - (608) 219-1331, Cody.Kammerzelt@dot.wi.gov
- WisDOT Communications Manager: Hannah Punzel
 - (608) 246-7907, hannah.punzel@dot.wi.gov



Questions

