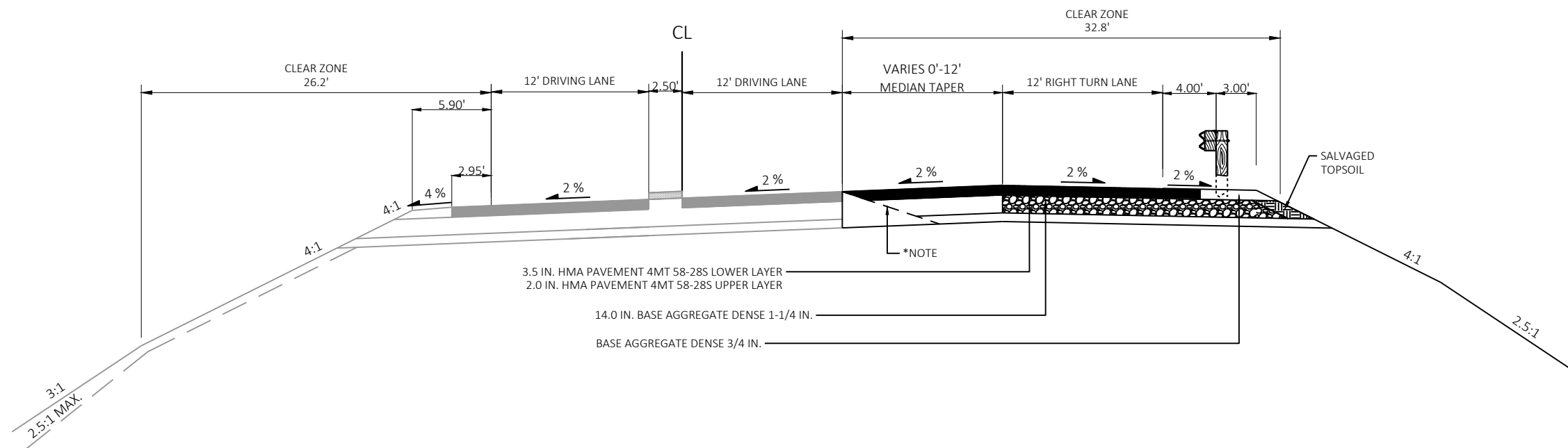


EXISTING TYPICAL MAINLINE SECTION (WIS 60)

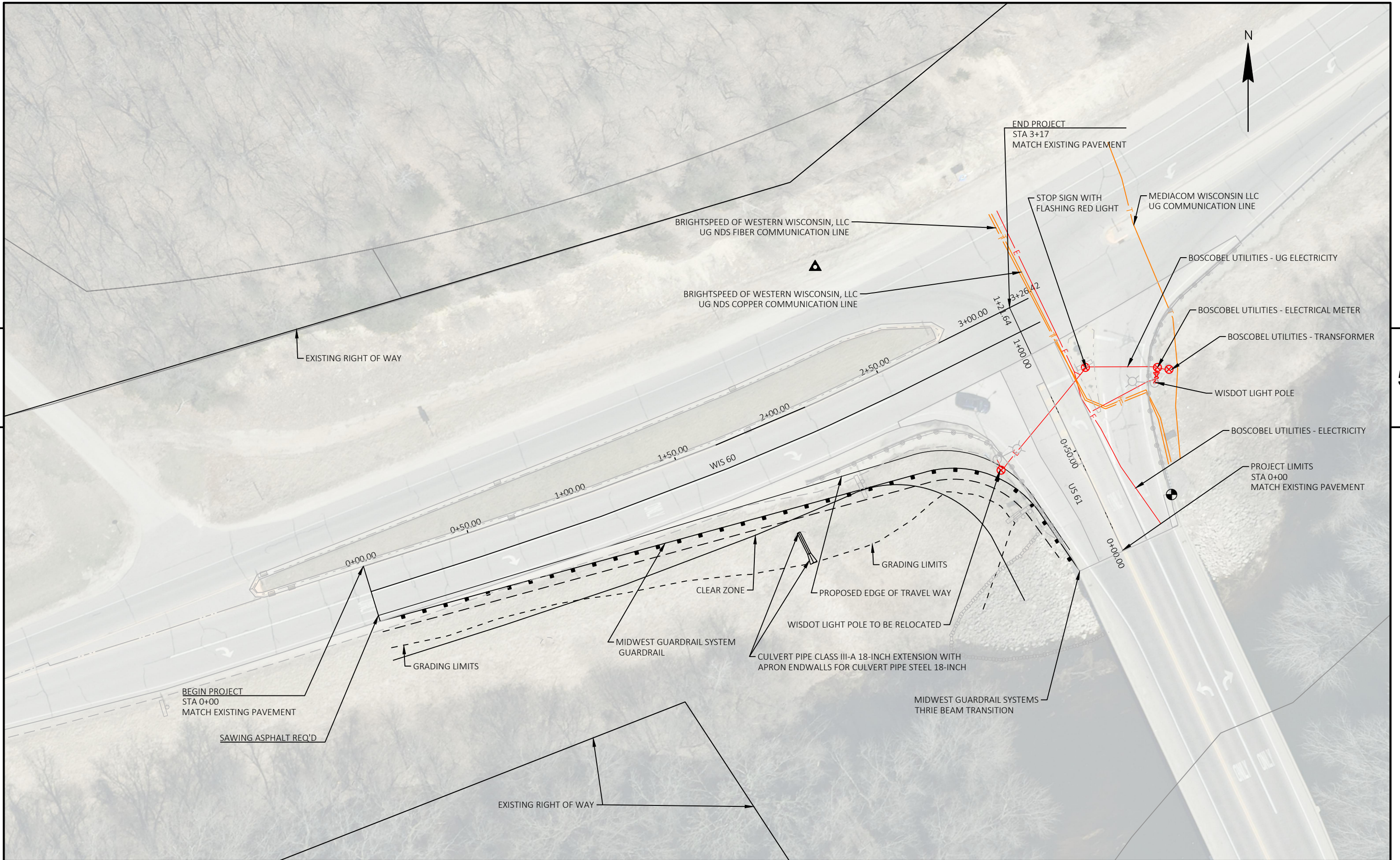
STATION 00+00 TO STATION 03+17



PROPOSED TYPICAL MAINLINE SECTION (WIS 60)

STATION 00+00 TO STATION 03+17

*NOTE: 2' SHOULDER & 3:1 SLOPE AS A TEMP TO KEEP TRAFFIC SAFE.
SEE CONSTRUCTION DRAWING FOR MORE DETAILS



PROJECT NO: 1650-03-74	HWY: US 61	COUNTY: CRAWFORD COUNTY	PLAN DETAILS	SHEET	E
------------------------	------------	-------------------------	--------------	-------	---