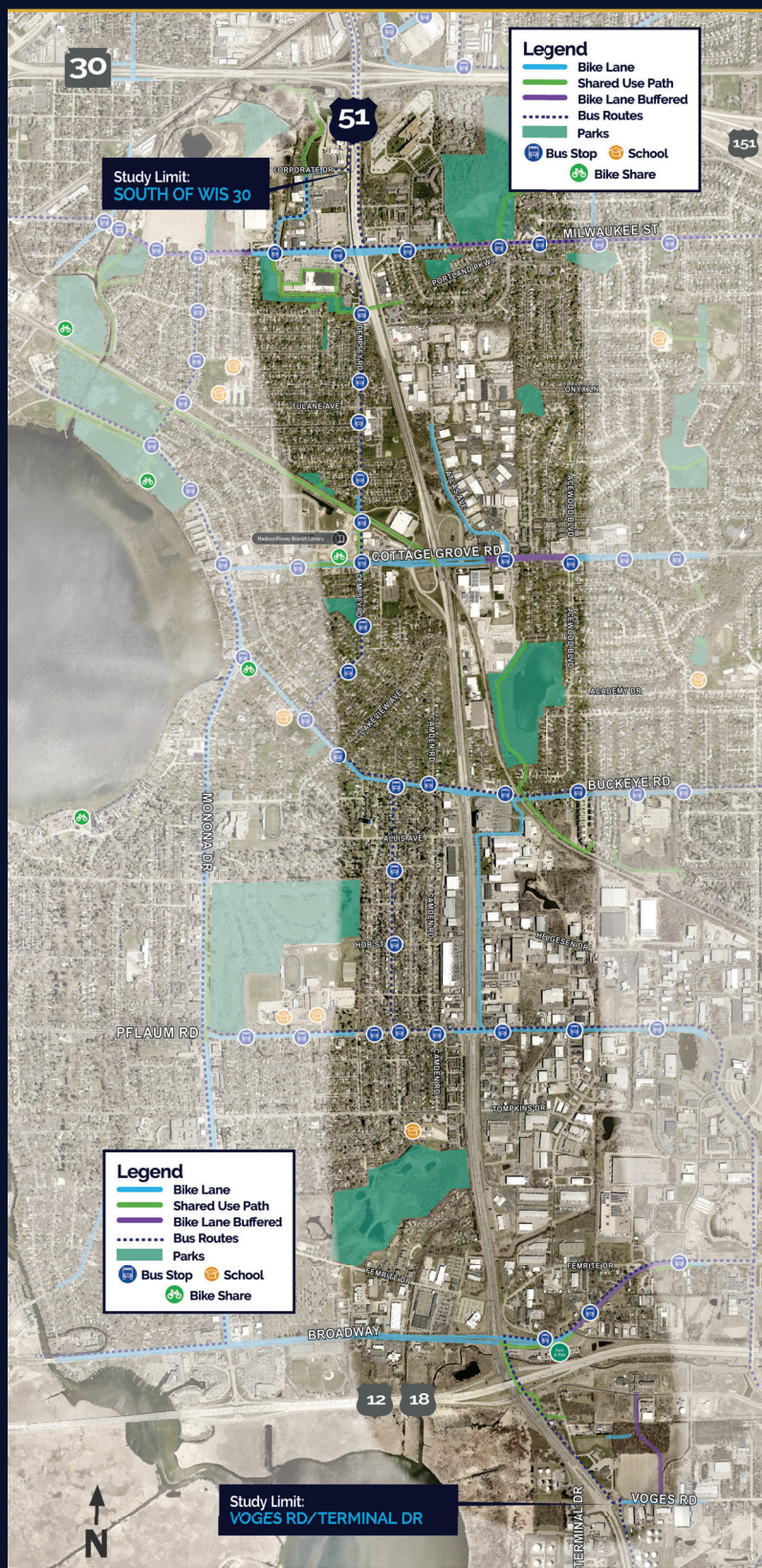


Bicycle/Pedestrian Accommodations

Options for multimodal facilities will be explored in all alternatives

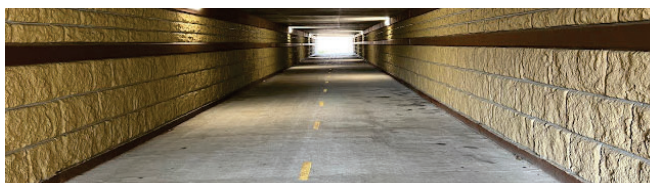
Existing US 51 South Study Multimodal Facilities



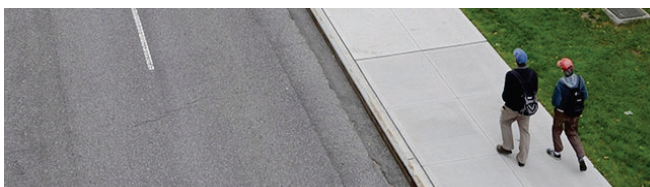
Potential Multimodal Improvements Include



Separated Bike Lane



Bike/Pedestrian Over/Underpass



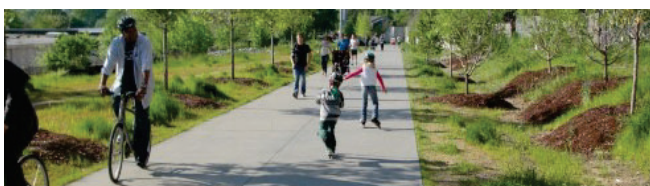
Sidewalk



Bus Lane



Bike Signals



Shared-Use Path

Multimodal facilities designed for all ages and abilities to the extent practicable. Specific locations to be determined later in the study.