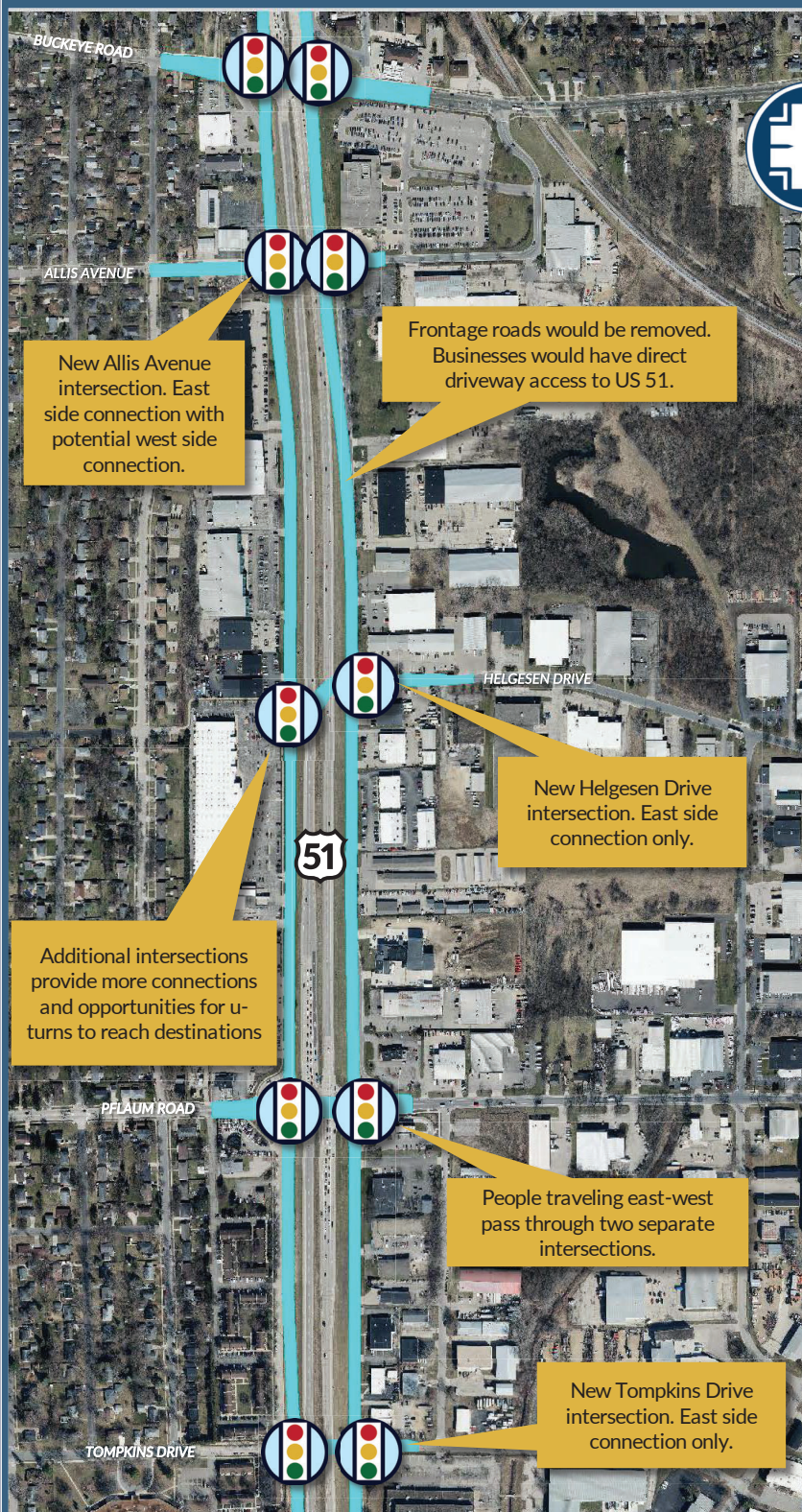


# Wide Boulevard Intersection

Intersections between Buckeye Road and Tompkins Drive would function as one-way road intersections if the Wide Boulevard concept is chosen



## Buckeye Road to Tompkins Drive

Functions as two one-way street crossings.

Frontage roads would be removed and businesses would have direct driveway access to US 51.

Allows vehicles and multi-modal traffic to cross one direction of US 51 at a time.

Encourages a slower, urban-style roadway.

- +** Two one-way intersections likely to have fewer crashes than a traditional intersection
- +** Efficient signals with minimal delay
- +** No bridge costs required
- +** Bikes and pedestrians cross smaller/less complex intersections
- Bikes and pedestrians must cross US 51 traffic
- May require up to 2 property relocations

### LEGEND:



New Signal



US 51 Improvements