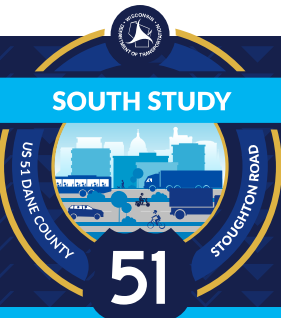


## SOUTH STUDY



## US 51 (Stoughton Road) South Study

# Public Involvement Meeting

JULY 2025

### WE WANT YOUR INPUT!

We would like feedback on the conceptual alternatives under consideration for US 51.

#### ► TAKE OUR ONLINE SURVEY

Scan the QR code below or visit the project website to access the survey.

#### ► SUBMIT WRITTEN COMMENTS

1. Provide comments via the study website (link below). Scroll down the webpage and click the **Comment now** link.
2. Fill out a paper comment form at tonight's meeting.
3. Return a paper comment form in the provided postage paid envelope via U.S. mail by **August 15, 2025**.
4. Email your comments to the Project Manager, Jeff Berens, at [Jeff.Berens@dot.wi.gov](mailto:Jeff.Berens@dot.wi.gov) or call **(608) 245-2656**.

#### ► SIGN UP FOR EMAIL UPDATES

Scan the QR code below or visit the study website and click the **Sign up now** link to get study updates delivered to your inbox!








SCAN THE QR CODE TO VISIT THE WEBSITE AT [tinyurl.com/US51SouthPI](https://tinyurl.com/US51SouthPI)

The Wisconsin Department of Transportation (WisDOT) welcomes you to tonight's meeting to receive updates on the US 51 South Study and review the conceptual intersection alternatives.

Explore at your own pace: view the exhibits, watch the presentation, complete our survey, and talk to and share your questions with our study team members.

### Conceptual Intersection Alternatives

For US 51's conceptual alternatives, different intersection types are considered for each existing intersection. While the unique needs and contexts of each crossing require unique solutions, here are a few common configurations that we are evaluating.

Improve Existing		Hybrid Intersection Conversion
 <b>Traditional Intersection</b> Provides improvements to existing intersections without the use of bridges	 <b>Interchange</b> Provides separation of side road and mainline traffic using bridges and ramps	 <b>Hybrid Intersection Conversion</b> Provides separation between side road and US 51 traffic at existing intersections using a bridge and new connector roadways
		
<b>EXAMPLE</b> E Washington Ave & First St	<b>EXAMPLE</b> US 51 & WIS 30	<b>EXAMPLE</b> Mineral Point Rd & Junction Rd
Added lanes provide more capacity	Separates side road and mainline traffic	Separates side road and mainline traffic
Lower construction cost	Safest for vehicles on US 51	Safer than traditional intersection
Least potential for improved safety	Encourages higher travel speed	Higher construction cost
Bikes and pedestrians conflict with US 51 traffic		Impacts associated with connector road
Nearby frontage roads must be relocated		Indirection for some vehicle movements
<u>Potential locations</u> Buckeye Rd, Pflaum Rd, Broadway, Voges Rd/Terminal Dr	<u>Potential locations</u> Milwaukee St, Cottage Grove Rd, Beltline (US 12/18)	<u>Potential locations</u> Milwaukee St, Cottage Grove Rd, Buckeye Rd, Pflaum Rd, Broadway, Voges Rd/Terminal Dr





### Milwaukee Street



Improved Interchange

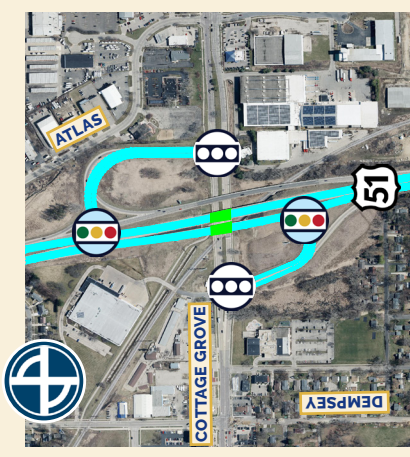


Hybrid Intersection

### Cottage Grove Road

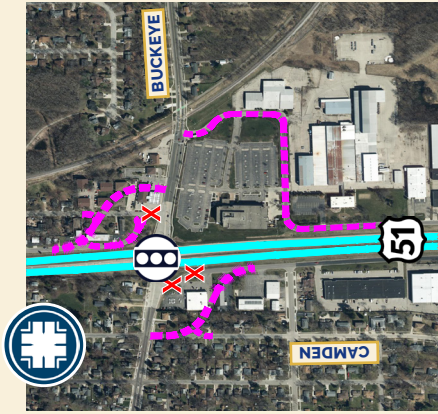


Improved Interchange

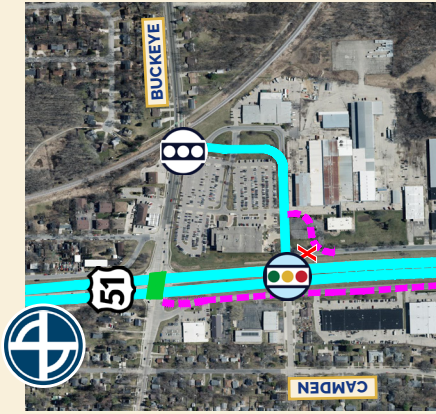


Hybrid Intersection

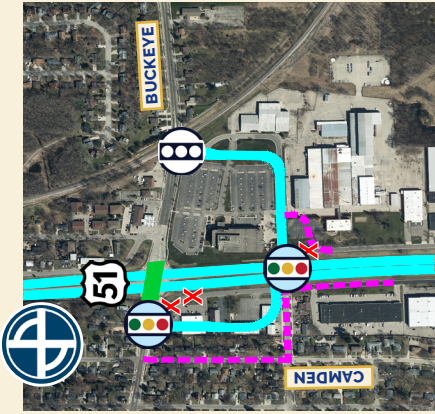
### Buckeye Road



Expanded Intersection



One-Connector Hybrid



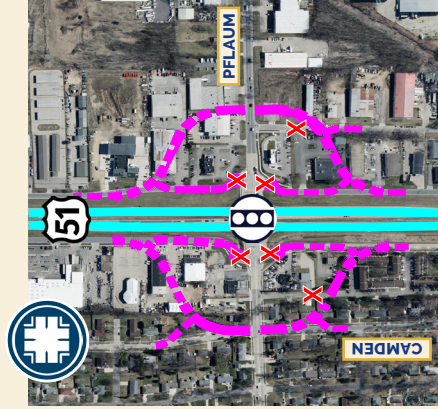
Two-Connector Hybrid

### ALTERNATE CONCEPT Wide Boulevard

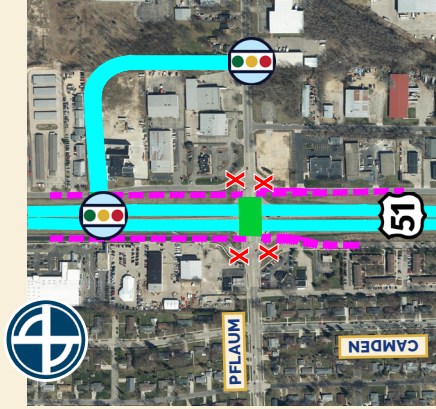


Paired One-Way Roads  
from Buckeye to Tompkins

### Pflaum Road

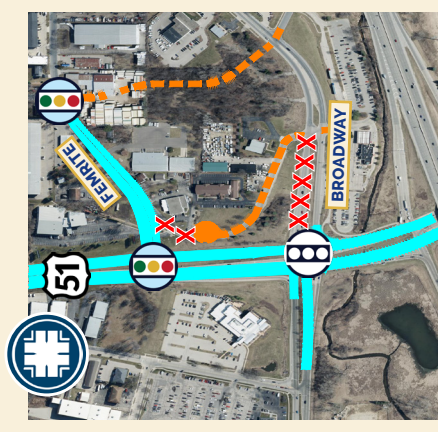


Expanded Intersection

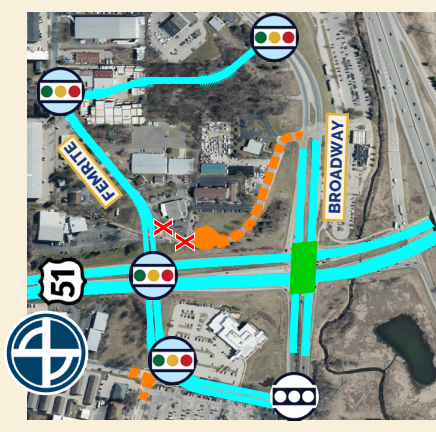


Hybrid Intersection

### Broadway

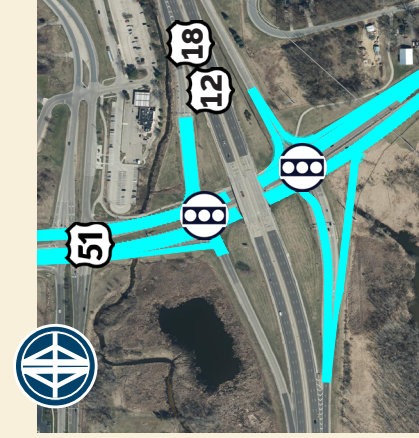


Offset Tee Intersection

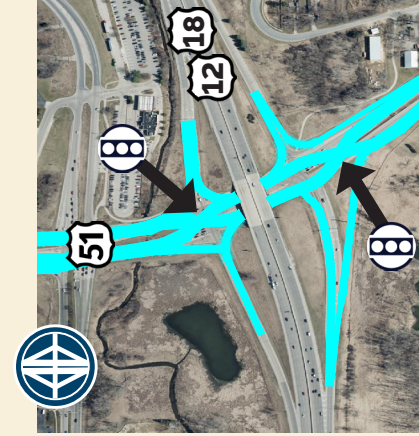


Hybrid Intersection

### Beltline



Improved Interchange



Diverging Diamond  
Interchange

### Voges Road & Terminal Drive



Expanded Intersection



North Connector Hybrid



South Connector Hybrid

## Legend

- US 51 Improvement
- Local Road Improvement
- Existing/Proposed Bridge
- Potential Frontage Road
- Improve Existing Signal
- New Signal
- Remove Roadway

Public Involvement Meeting #3  
US 51 (Stoughton Road) South

## Conceptual Intersection Alternatives

To learn more about the conceptual alternatives, review tonight's materials, take our survey, and submit comments visit [tinyurl.com/US51SouthPI](https://tinyurl.com/US51SouthPI)



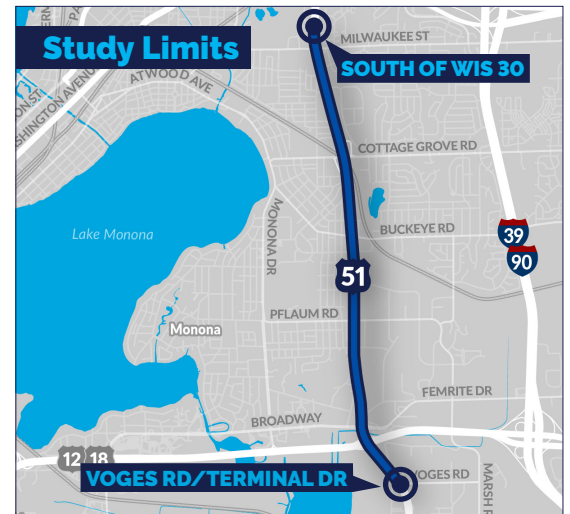


## About the Study

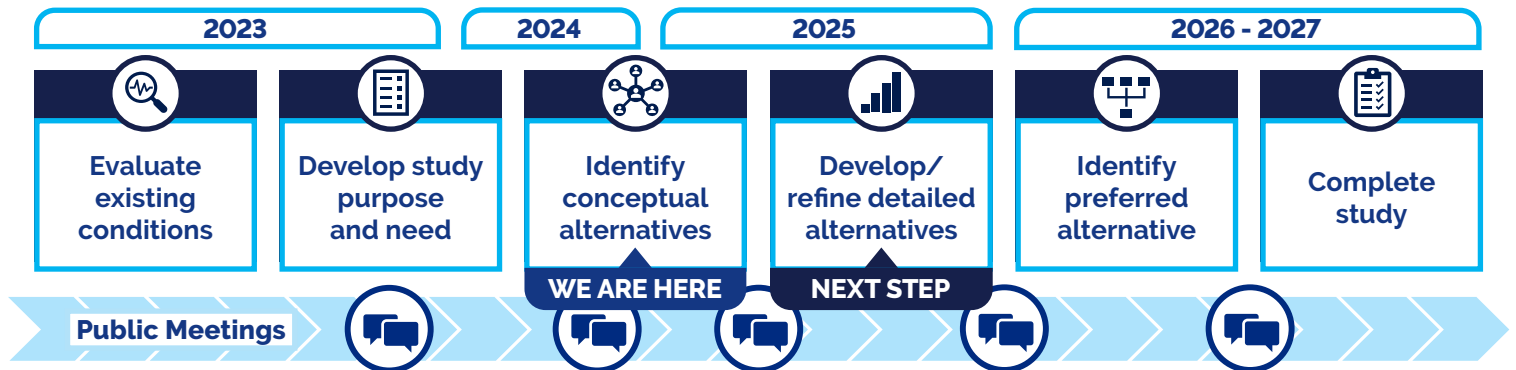
The US 51 (Stoughton Road) South Study will evaluate 4.4 miles of Stoughton Road from Voges Road/Terminal Drive in McFarland to south of WIS 30 in Madison.

The purpose of the US 51 South Study is to improve safety and mobility for all modes of travel and improve community connectivity, guided by local plans and goals.

This is the third meeting for this study. The first, held in July 2023, invited attendees to review the study's draft purpose and need. The second meeting, held in November 2024, explored conceptual alternatives for the corridor itself. Tonight's meeting will look into the conceptual alternatives for the intersections.



## Study Schedule



## Next Step: Detailed Alternatives

The next step is to define a small set of detailed alternatives, which combine compatible corridor and intersection concepts to provide a complete vision for the corridor. The detailed alternatives will be evaluated and presented to stakeholders and the public in winter 2025/2026.

### Detailed alternatives will define:

- Speed limits
- Roadway design characteristics
- Frontage road designs
- Intersection types
- Any potential new intersections
- Bicycle/Pedestrian accommodations

## GET INVOLVED:

TAKE OUR SURVEY, SUBMIT A COMMENT, SUBSCRIBE TO STAY INFORMED

The materials presented tonight will be **available online** after the meeting. To review information, complete our **online survey**, submit **written comments** and sign up for **email updates**, scan the QR code or go to [tinyurl.com/US51SouthPI](https://tinyurl.com/US51SouthPI)



## Contact Information

If you have questions or would like additional information after tonight's meeting, you may contact the WisDOT project manager.

### Jeff Berens, P.E.

US 51 (Stoughton Road) South Study Project Manager

(608) 245-2656 [Jeff.Berens@dot.wi.gov](mailto:Jeff.Berens@dot.wi.gov)

