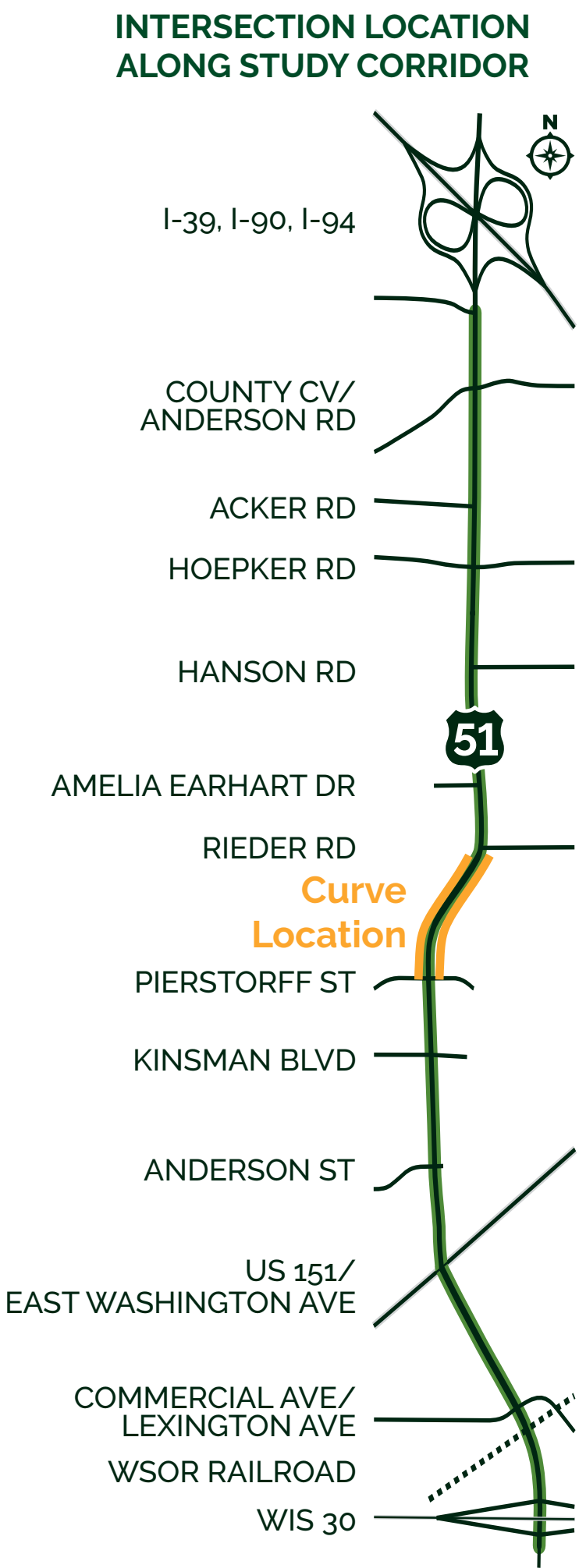
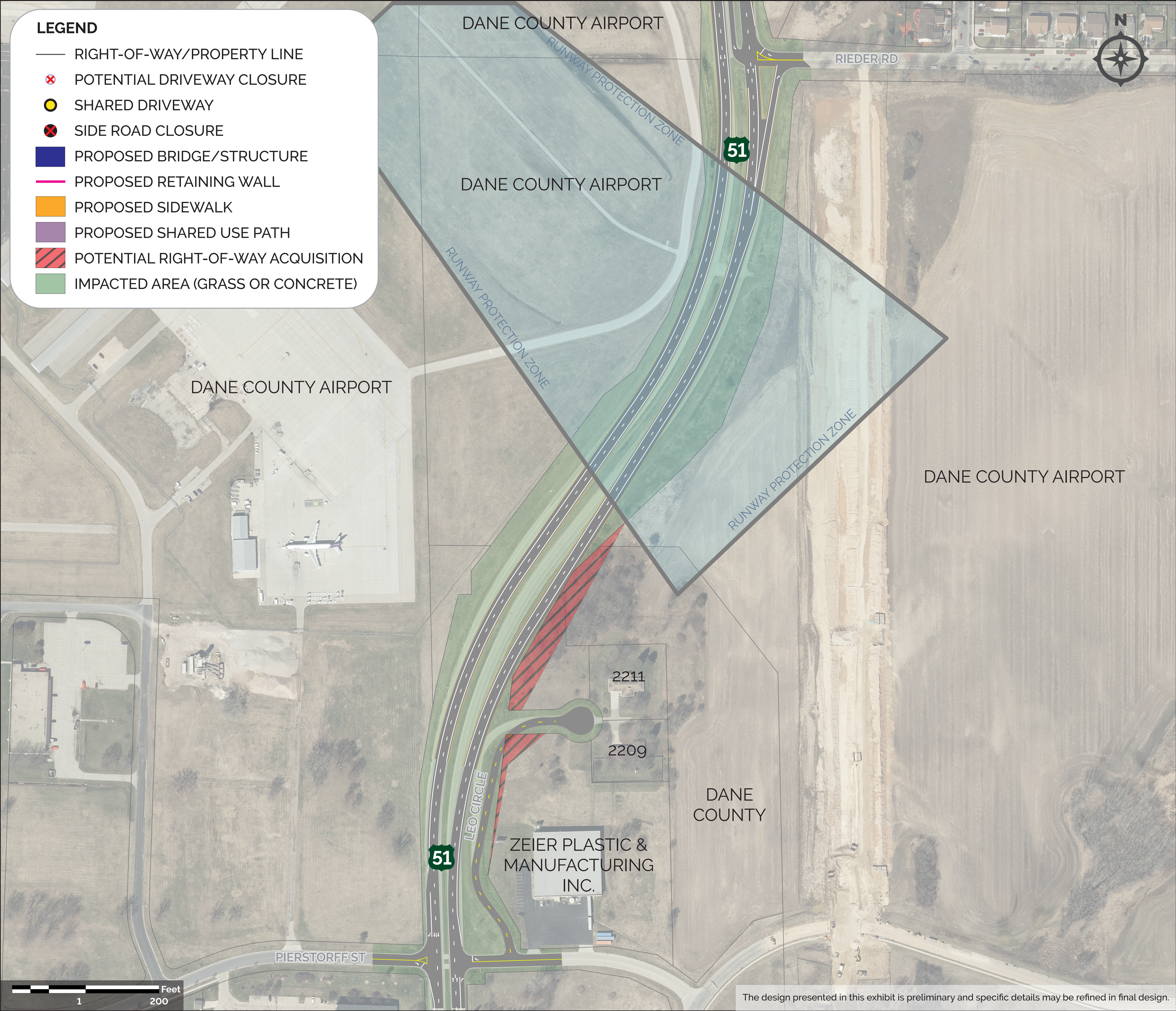


# Preferred Alternative: US 51 and Pierstorff Street to Rieder Road Realignment



## ALTERNATIVE OVERVIEW

### ROADWAY IMPROVEMENTS

- Minor shift of US 51 alignment east to improve substandard curves north of Pierstorff Street
- Minor shift of Leo Circle to accommodate US 51 alignment shift