

Existing and Proposed Pedestrian and Bicycle Facilities

CROSSWALK LOCATIONS

EXISTING MARKED CROSSWALK

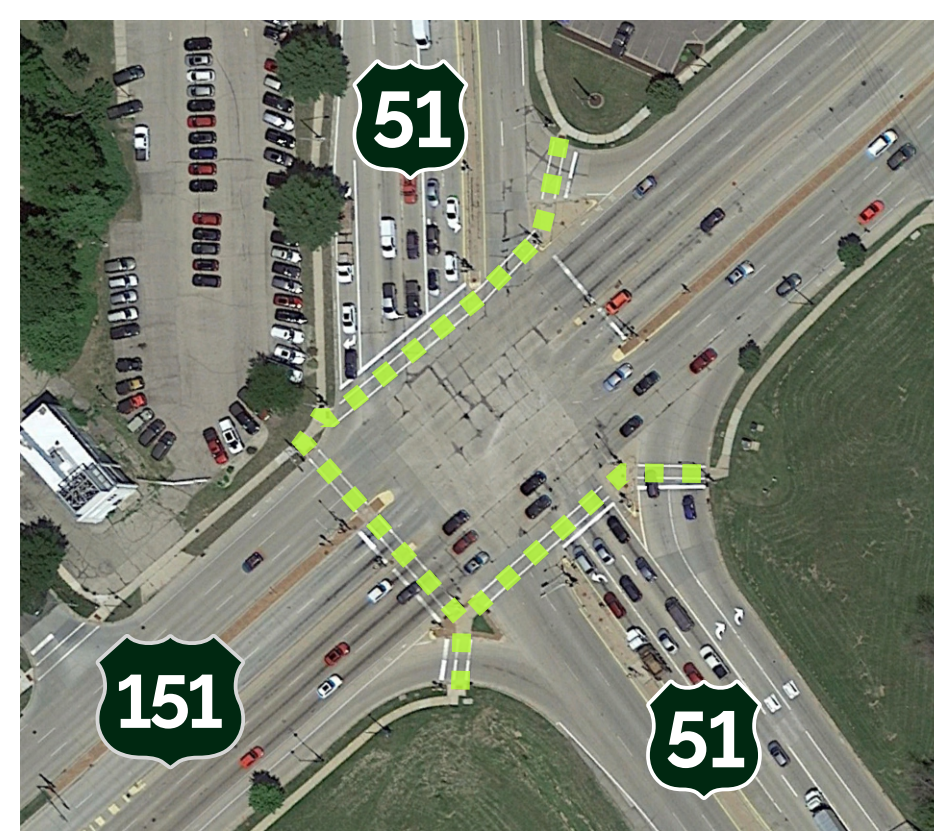
Marked crosswalk at three locations in the study corridor



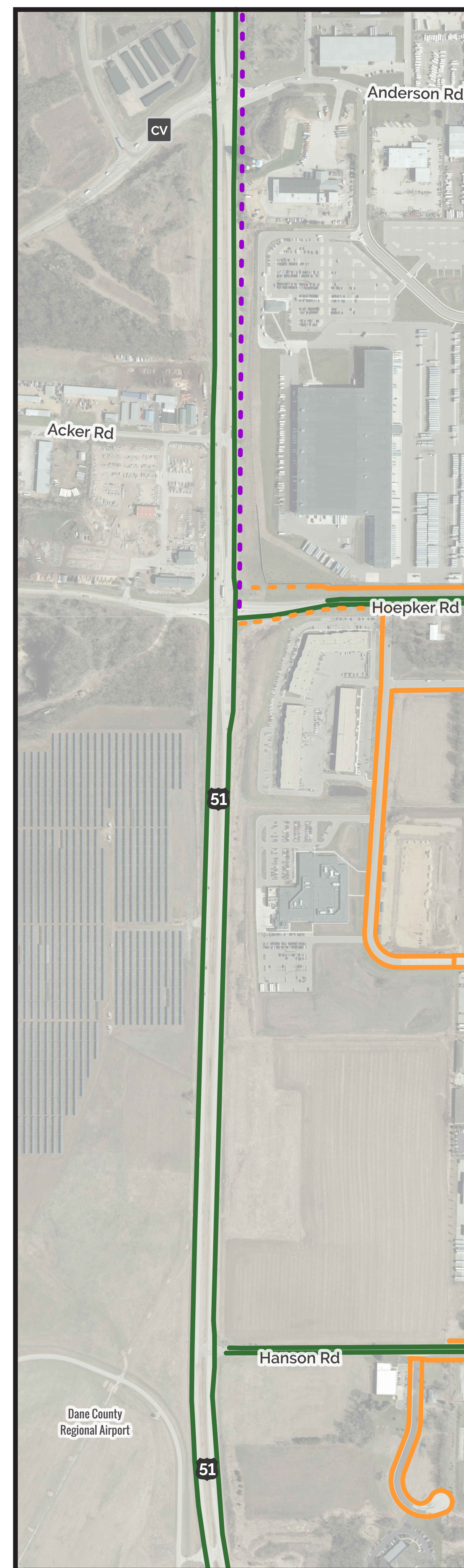
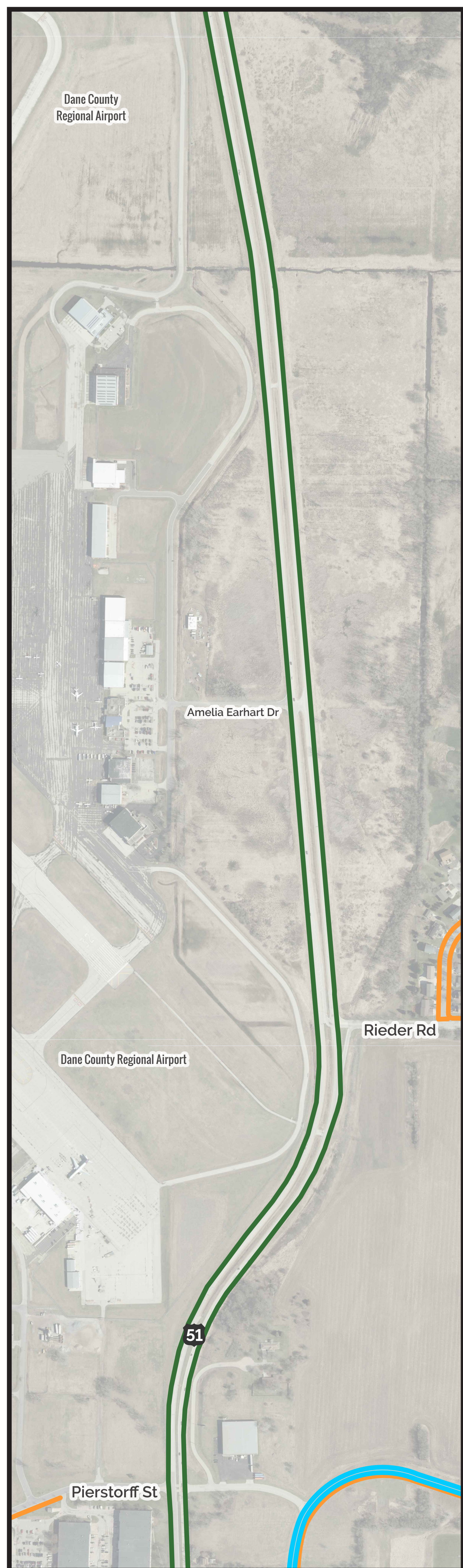
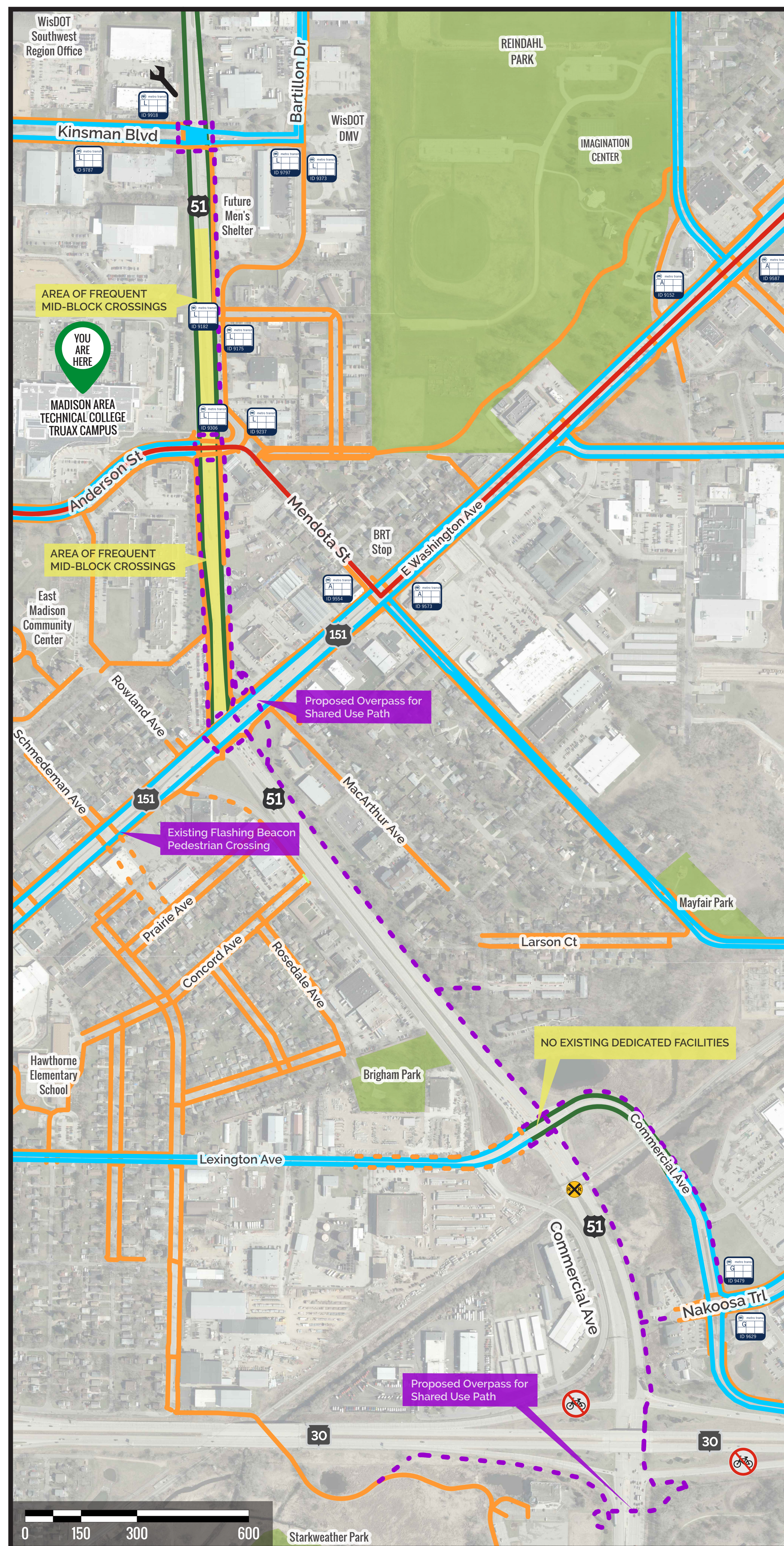
KINSMAN BLVD



ANDERSON ST



US 151 / E. WASHINGTON AVE



LEGEND

- Existing Pedestrian Facilities
- Existing Bicycle Facilities
- Existing Paved Shoulder
- - - Proposed Shared Use Path
- - - Proposed Sidewalk
- Bus Rapid Transit Route
- Madison Metro Bus Stop
- Bicycle Repair Station
- Bicycles Prohibited

Source: <https://data.cityofmadison.opendata.arcgis.com/>
<https://www.greatermadisonmpo.org/maps/DaneCountyMapforBicyclists.cfm>

Proposed facilities shown include crosswalks across all legs at US 51 intersections with Lexington/Commercial, East Washington Avenue, Anderson Street, Kinsman Boulevard, and Hoepker Road. A shared use path is proposed on the east side of US 51 from WIS 30 to Kinsman Boulevard and from Hoepker Road to the northern study limits.

