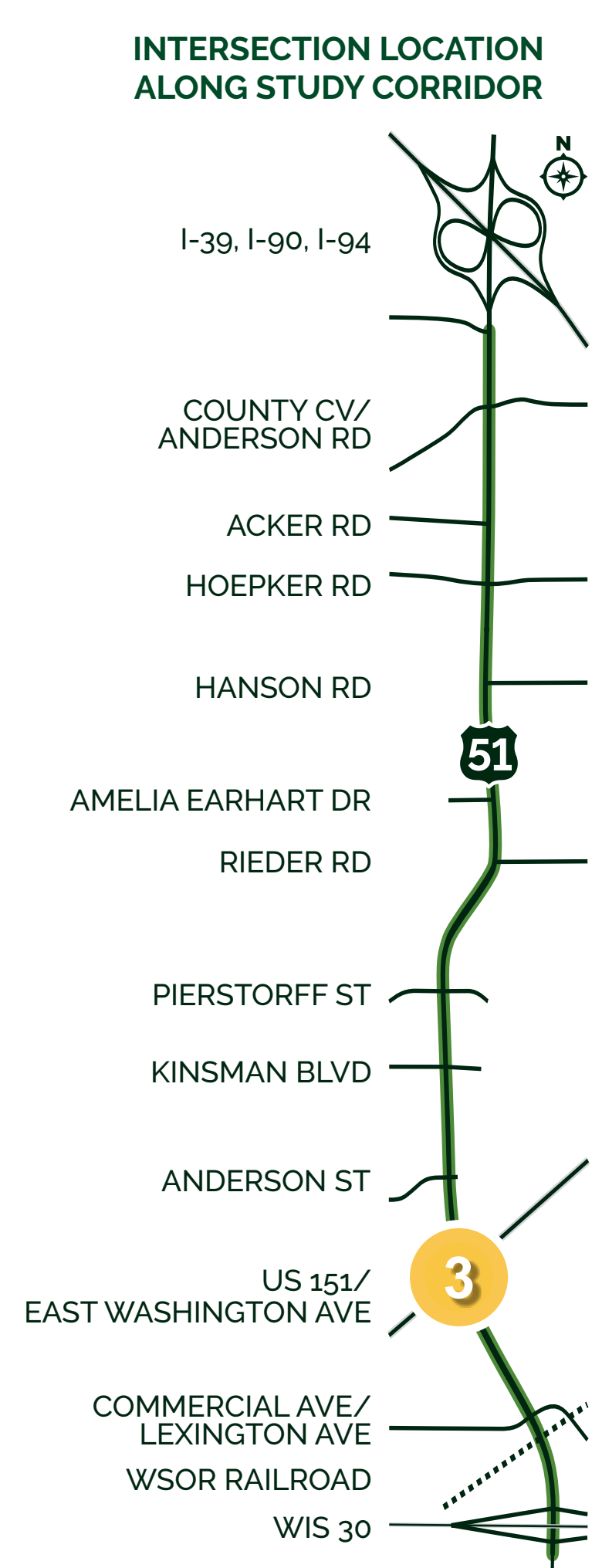
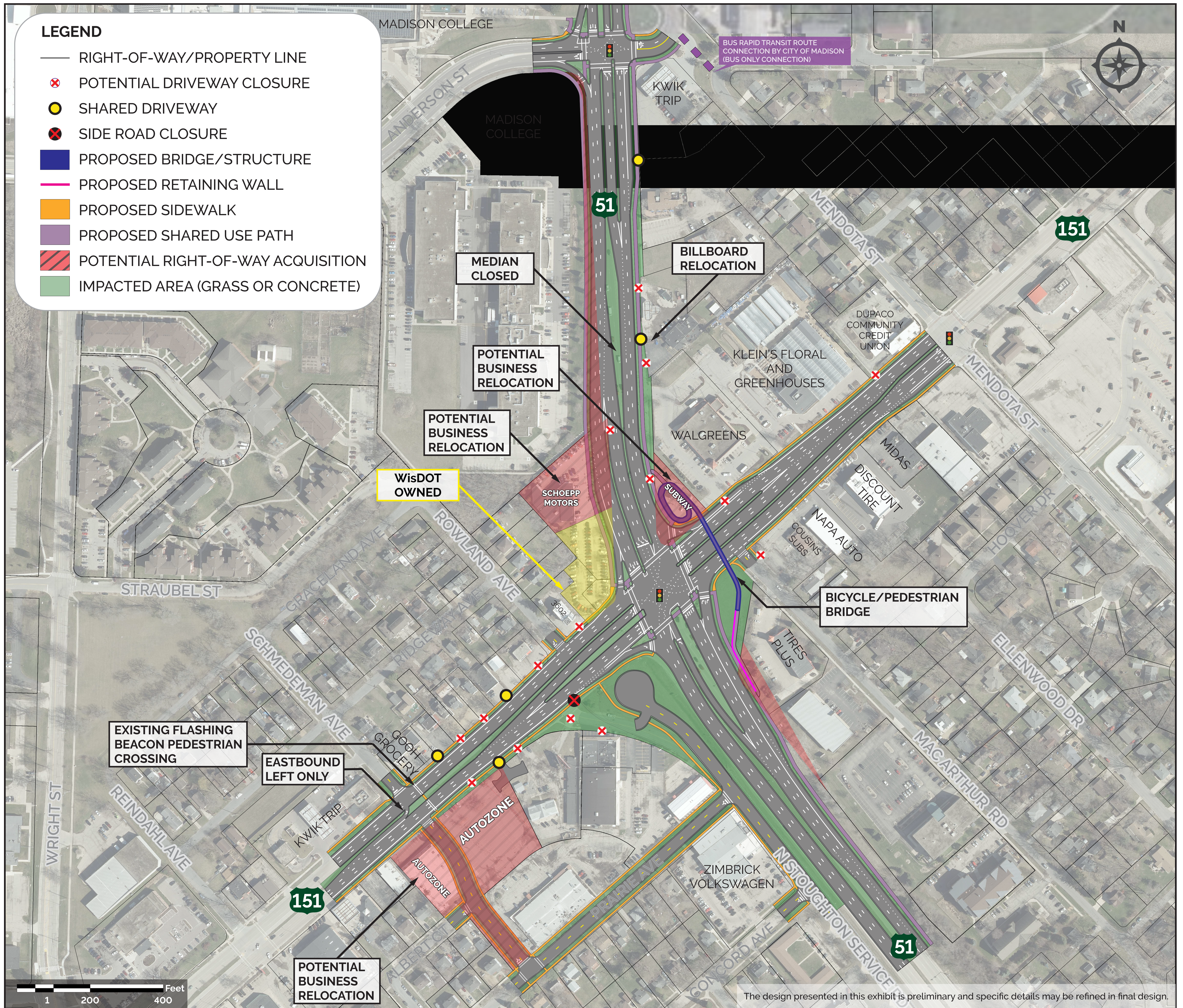


3

# Preferred Alternative: US 51 and US 151 (East Washington Avenue)



## ALTERNATIVE OVERVIEW

### INTERSECTION IMPROVEMENTS

- Maintains existing signalized intersection
- Improves intersection skew
- Adds and lengthens turn lanes
- Adds additional northbound lane north of the intersection
- Median access closed north of the intersection

### BICYCLE/PEDESTRIAN IMPROVEMENTS

- Crosswalks on all four legs of intersection
- Shared use path along east side of US 51; west side of US 51 from East Washington Avenue to Anderson Street
- Bicycle/pedestrian bridge over East Washington Avenue east of US 51

### ADDITIONAL IMPROVEMENTS

- MacArthur Road and Rowland Avenue remain open
- N. Stoughton Service Road closed
- Schmedeman Avenue access restricted; adds new roadway across from Schmedeman Avenue connecting to Prairie Avenue
- Potential driveway closures on US 51 and East Washington Avenue

★ Updated since Public Involvement Meeting (PIM) #3 - April 2024

