

# Common Council Meeting Handout

**US 18  
Project Limits  
Marquette – Prairie Du Chien  
Crawford County**



**Tuesday, July 16, 2024  
7:00 PM**

Located at: Prairie Du Chien City Hall  
214 E. Blackhawk Avenue, Prairie Du Chien, WI 53821

**Project Website:**

<https://wisconsindot.gov/Pages/projects/by-region/sw/us18-mainstreet/default.aspx>.

## **Purpose of the meeting**

To present the project for the proposed improvements to US 18 (Main Street) in the City of Prairie du Chien in Crawford County, WI, to the City of Prairie Du Chien Common Council. See Figure 1 on the next page for the project location map.

The Wisconsin Department of Transportation (WisDOT) is currently in the design phase of this project, which will include the reconstruction of the US 18 intersections at Wisconsin Street and Iowa Street.

Our objective is to provide you with a brief update concerning the proposed improvements to the roadway. We are also seeking information concerning potentially environmentally sensitive areas along the corridor.

## **Project Needs**

The proposed project is located on US 18 (Main Street) in the City of Prairie du Chien in Crawford County, WI. The project limits are just north of Wisconsin Street and just south of Iowa Street on US 18 (Main Street). US 18 is a two-lane undivided roadway north of the Iowa Street intersection and a two-lane divided roadway south of the Iowa Street intersection.

US 18 is an east-west arterial roadway used by local commuters, regional trucks, and tourism traffic connecting communities between Wisconsin and Iowa at this location.

### Purpose

The purpose of this project is to address the crashes and improve the safety at the Wisconsin Street and Iowa Street intersections on US 18 (Main Street). These intersections are currently stop-controlled on north and south approaches while the east and west approaches are free-flowing.

### Need

The intersections at Wisconsin Street and Iowa Street have seen an increased number of crashes since the roadway was reconstructed in 2011.

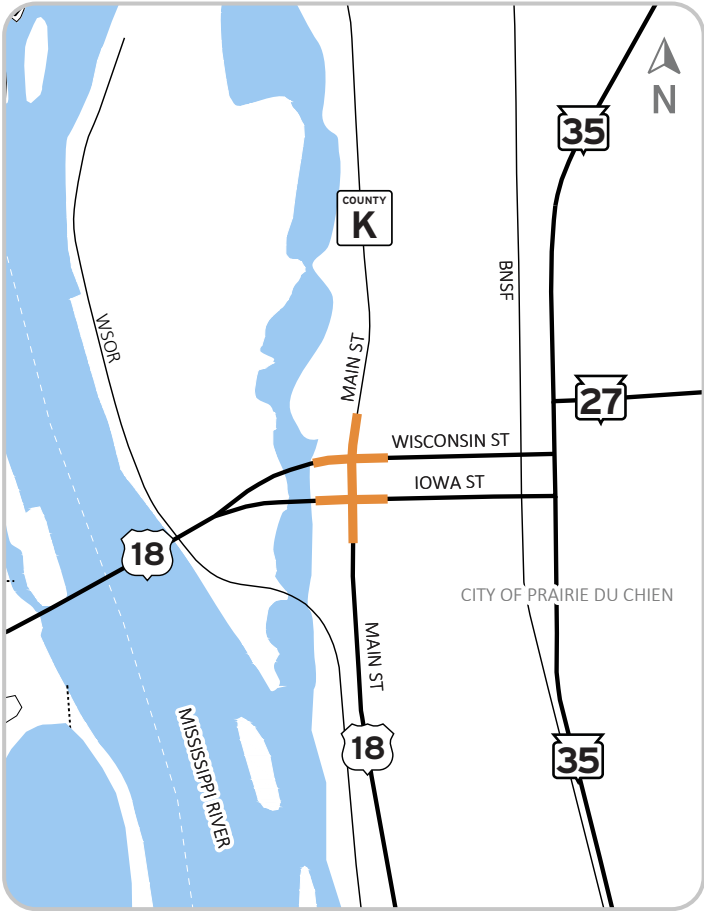
The severity of some of the observed crashes at these intersections warrants consideration of improvements to address the safety concerns.

# FIGURE 1

## PROJECT LOCATION MAP

DESIGN PROJECT ID: 1660-02-03  
CONSTRUCTION PROJECT ID: 1660-02-73,-75  
MARQUETTE - PRAIRIE DU CHIEN

MAIN STREET INTERSECTION USH 18  
CRAWFORD COUNTY



Approximate Project Limits



## **Project Overview/Information**

The proposed alternative would reconstruct the intersections and build single-lane roundabouts at Wisconsin Street and Iowa Street. This safety improvement will help reduce the frequency and severity of the crashes observed at both intersections.

Additional proposed improvements include:

- Storm sewer Improvements
- City utility improvements
- Lighting upgrades
- Curb ramp improvements to meet Americans with Disabilities Act (ADA) standards
- Maintain freight accommodations for oversized and overweight (OSOW) vehicles on US 18, Wisconsin Street and Iowa Street

## **Current anticipated construction impacts**

The project will be constructed in 3 stages:

- Stage 1 will construct temporary work at the US 18 and Iowa Street Intersection in preparation for the next stage.
- Stage 2 will construct the US 18 and Wisconsin Street roundabout under a full closure from Blackhawk Avenue to halfway between Iowa Street and Wisconsin Street.
  - Wisconsin Street will be detoured to WIS 35 south, to US 18 west, and to Iowa Street.
- Stage 3 will construct Iowa Street half at a time to maintain thru traffic on Iowa Street. .
  - Wisconsin Street will be open during this stage, and US 18 will be detoured on Wisconsin and Iowa Street to and from WIS 35.
  - The north leg of the USH 18 and Iowa intersection will be closed. USH 18 (Main Street) traffic will use STH 35 to access Prairie du Chien.

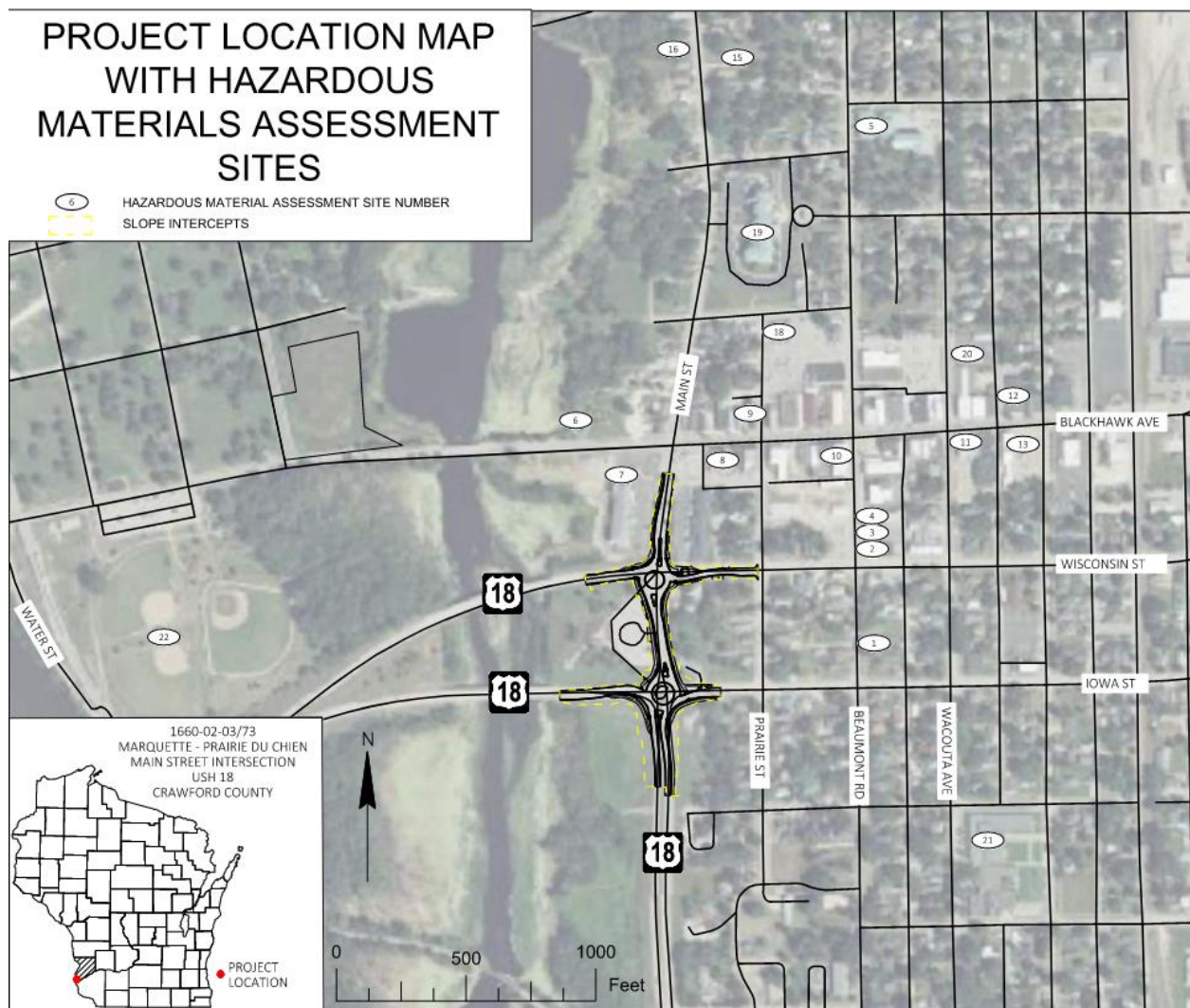
The contractor will be required to maintain access to residents and businesses during construction.

## **Real estate**

New permanent right of way and temporary easements will be required along the project due to the widening of the intersection to construct the roundabouts.

As part of this project, WisDOT completed an archaeological survey, which was completed by the Mississippi Valley Archeology Center (MVCA), and a hazmat survey. Each survey found a few sites near/adjacent to this project; see Figures 2 & 3, respectively.

Figure 3 – Hazmat Sites



The design team is reaching out to the public as part of an effort identify any new sites or information concerning any known sites.

## Project Timeline and next steps

The next steps for this project include the preliminary and final design of the corridor. Public outreach will continue throughout the design process.

Project milestones include the following:

- Local Officials Meeting
  - Public Information Meeting
  - Preliminary roadway design
- Held - December 5, 2023  
Held - January 25, 2024  
Submitted March 1, 2024

- |                                    |                         |
|------------------------------------|-------------------------|
| • Environmental Documents          | August 2024             |
| • Final right of way plat          | September 2024          |
| • Real estate negotiations begin   | Fall/Winter 2024        |
| • Final plans                      | August 2025             |
| • Construction currently scheduled | Spring/Summer/Fall 2026 |

## Project design website

Access the following materials on the project design website:

<https://wisconsindot.gov/Pages/projects/by-region/sw/us18-mainstreet/default.aspx>.

- Project exhibits and displays from the PIM held on January 2024
- PDF of power point display from the PIM held on January 2024

## Public input/comments

If you have any questions concerning the project or input concerning environmentally sensitive areas, please contact one of the people listed below before August 1<sup>st</sup>, 2024. Your comments assist us in developing a project that will serve the needs of the traveling public as well as the needs of the local community. Your input is welcome and appreciated throughout the design process.

For more information, please contact:

*John Bainter*

John Bainter, P.E.  
Project Development Supervisor  
Southwest Region - Lacrosse  
(608) 785-9729  
[John.bainter@dot.wi.gov](mailto:John.bainter@dot.wi.gov)

*Jill Fehrman*

Jill Fehrman, P.E.  
Project Coordinator  
DAAR Corporation  
(414) 935-4344  
[jill.fehrman@daarcorp.com](mailto:jill.fehrman@daarcorp.com)

*Jed Munroe*

Jed Munroe, P.E.  
Consultant Project Manager  
JT Engineering  
(608) 515-5331  
[Jedm@jt-engineering.com](mailto:Jedm@jt-engineering.com)