

SW REGIONWIDE THIN POLYMER OVERLAYS

*Various Bridges – I-39/90/94, US 151, Milwaukee St
Columbia, Jefferson & Dane County*

Virtual Presentation

July 2025



Project contacts

- Ryan Bailey, P.E.
 - Consultant Project Manager
- Mark Sponem, P.E.
 - WisDOT Project Manager
- Alex Hagen, P.E.
 - WisDOT Project Supervisor



Presentation outline

- Purpose and need
- Proposed improvements
- Project limits
- Traffic Control / Detours
- Schedule
- Contact information



Purpose and need

Project Scope:

Deck treatments for 11 bridges in Columbia, Dane, and Jefferson counties.
Addition of 6-foot sidewalk to Milwaukee Street bridge (B-11-131)

Purpose:

Extend the service life of the bridge and increase pedestrian safety on the Milwaukee Street bridge

Need:

Prevent moisture and chlorides from infiltrating the deck that can cause premature deterioration



Proposed Improvements

Thin Polymer Overlay & Methacrylate Flood Seal

Structure No.	Bridge Roadway	County	Proposed Treatment
B-11-83	US 151 SB over Maple Ave	Columbia	Methacrylate Flood Seal
B-13-102	I-39SB / I-90/94 EB over US 151	Dane	Methacrylate Flood Seal
B-13-103	I-39NB / I-90/94 WB over US 151	Dane	Methacrylate Flood Seal
B-13-131	Milwaukee St over I-39NB / I-90 WB	Dane	Thin Polymer Overlay 6 ft Sidewalk addition
B-13-841	I-94 WB over Koshkonog Creek	Dane	Thin Polymer Overlay
B-13-842	I-94 WB over unnamed stream	Dane	Thin Polymer Overlay
B-13-843	I-94 WB over unnamed stream	Dane	Thin Polymer Overlay
B-13-844	I-94 WB over unnamed stream	Dane	Thin Polymer Overlay
B-28-190	I-94 WB over Johnson Creek	Jefferson	Thin Polymer Overlay
B-28-189	I-94 EB over Johnson Creek	Jefferson	Thin Polymer Overlay
B-28-188	I-94 WB over Hillside Dr	Jefferson	Thin Polymer Overlay

Proposed improvements

Thin Polymer Overlay & Methacrylate Flood Seal

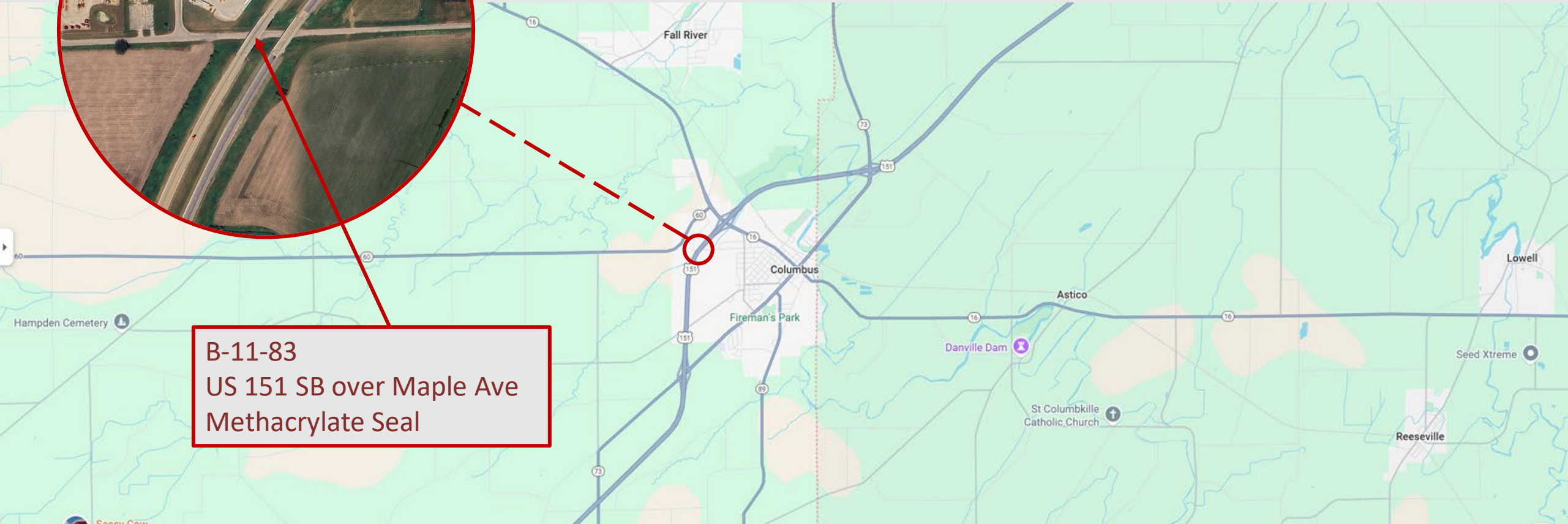


Project limits

Columbia County



B-11-83
US 151 SB over Maple Ave
Methacrylate Seal



Project limits

Dane County

B-13-841

I-94 WB over Koshkonog Creek
Thin Polymer Overlay

B-13-842

I-94 WB over unnamed stream
Thin Polymer Overlay

B-13-843

I-94 WB over unnamed stream
Thin Polymer Overlay

B-13-844

I-94 WB over unnamed stream
Thin Polymer Overlay

B-13-102

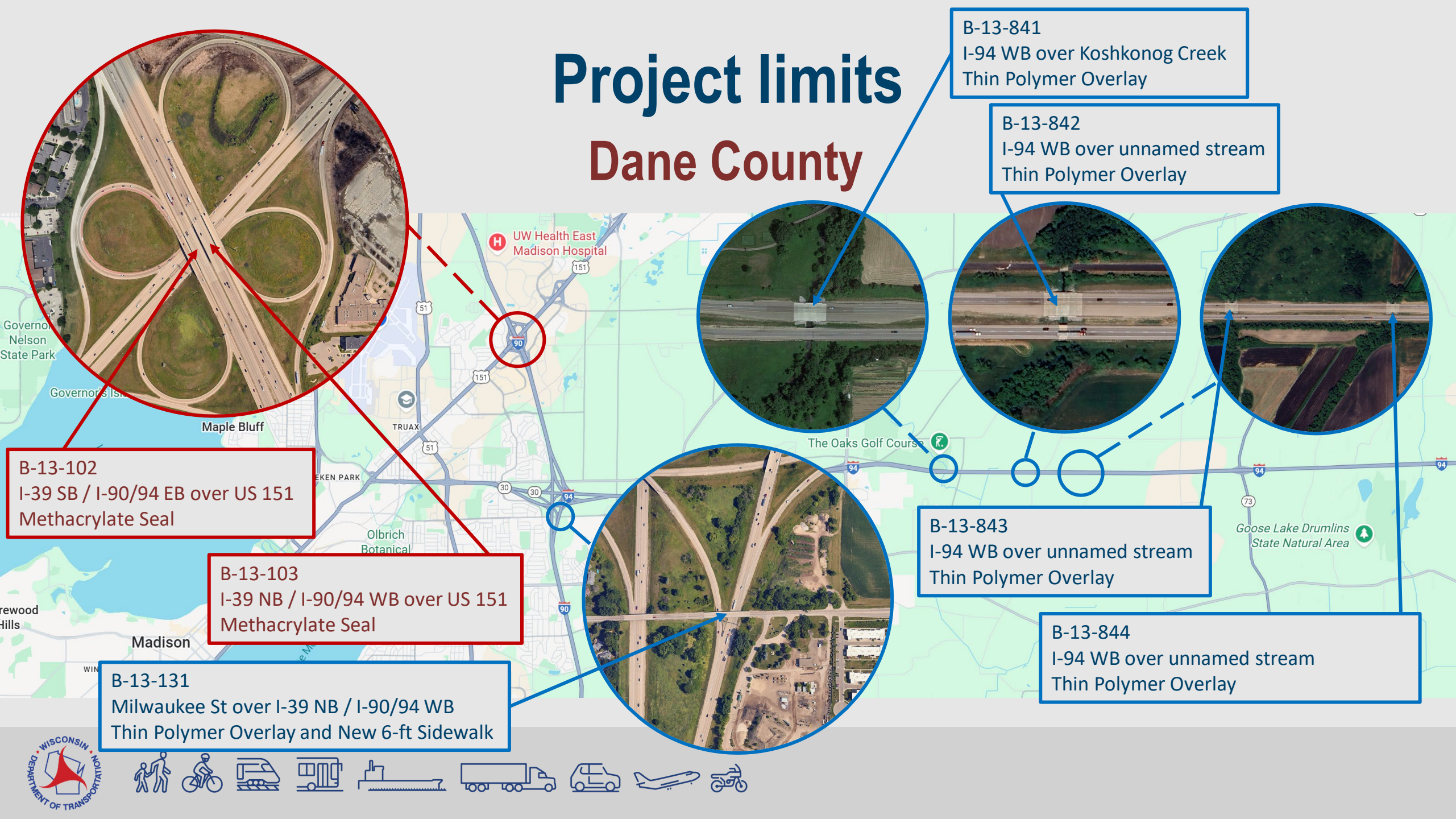
I-39 SB / I-90/94 EB over US 151
Methacrylate Seal

B-13-103

I-39 NB / I-90/94 WB over US 151
Methacrylate Seal

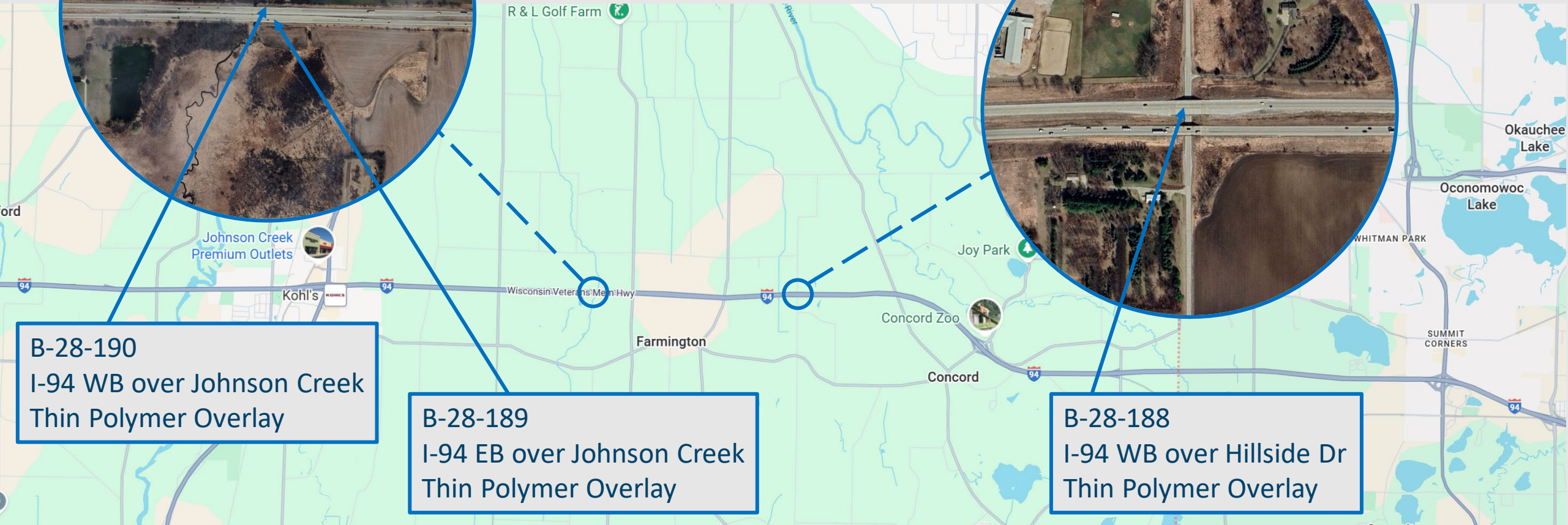
B-13-131

Milwaukee St over I-39 NB / I-90/94 WB
Thin Polymer Overlay and New 6-ft Sidewalk



Project limits

Jefferson County



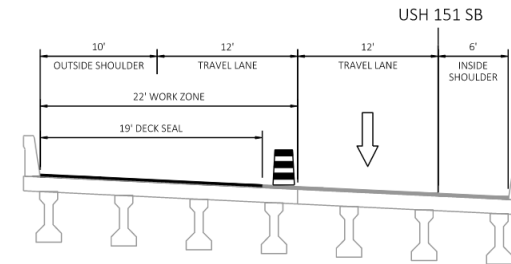
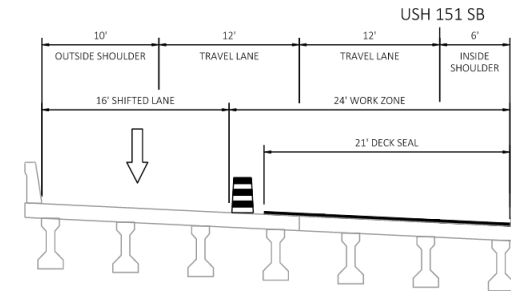
Traffic Control / Detour

All work to be performed during nighttime and off-peak traffic hours

Structure No.	Bridge Roadway	County	Traffic Control
B-11-83	US 151 SB over Maple Ave	Columbia	Single Lane Closure with Shifted Lane
B-13-102	I-39SB / I-90/94 EB over US 151	Dane	Double Lane Closures
B-13-103	I-39NB / I-90/94 WB over US 151	Dane	Double Lane Closures
B-13-131	Milwaukee St over I-39NB / I-90 WB	Dane	One Way Temporary Signals / Lane and ramp closures
B-13-841	I-94 WB over Koshkonog Creek	Dane	Single Lane Closure with Shifted Lane
B-13-842	I-94 WB over unnamed stream	Dane	Single Lane Closure with Shifted Lane
B-13-843	I-94 WB over unnamed stream	Dane	Single Lane Closure with Shifted Lane
B-13-844	I-94 WB over unnamed stream	Dane	Single Lane Closure with Shifted Lane
B-28-190	I-94 WB over Johnson Creek	Jefferson	Single Lane Closure with Shifted Lane
B-28-189	I-94 EB over Johnson Creek	Jefferson	Single Lane Closure with Shifted Lane
B-28-188	I-94 WB over Hillside Dr	Jefferson	Single Lane Closure with Shifted Lane

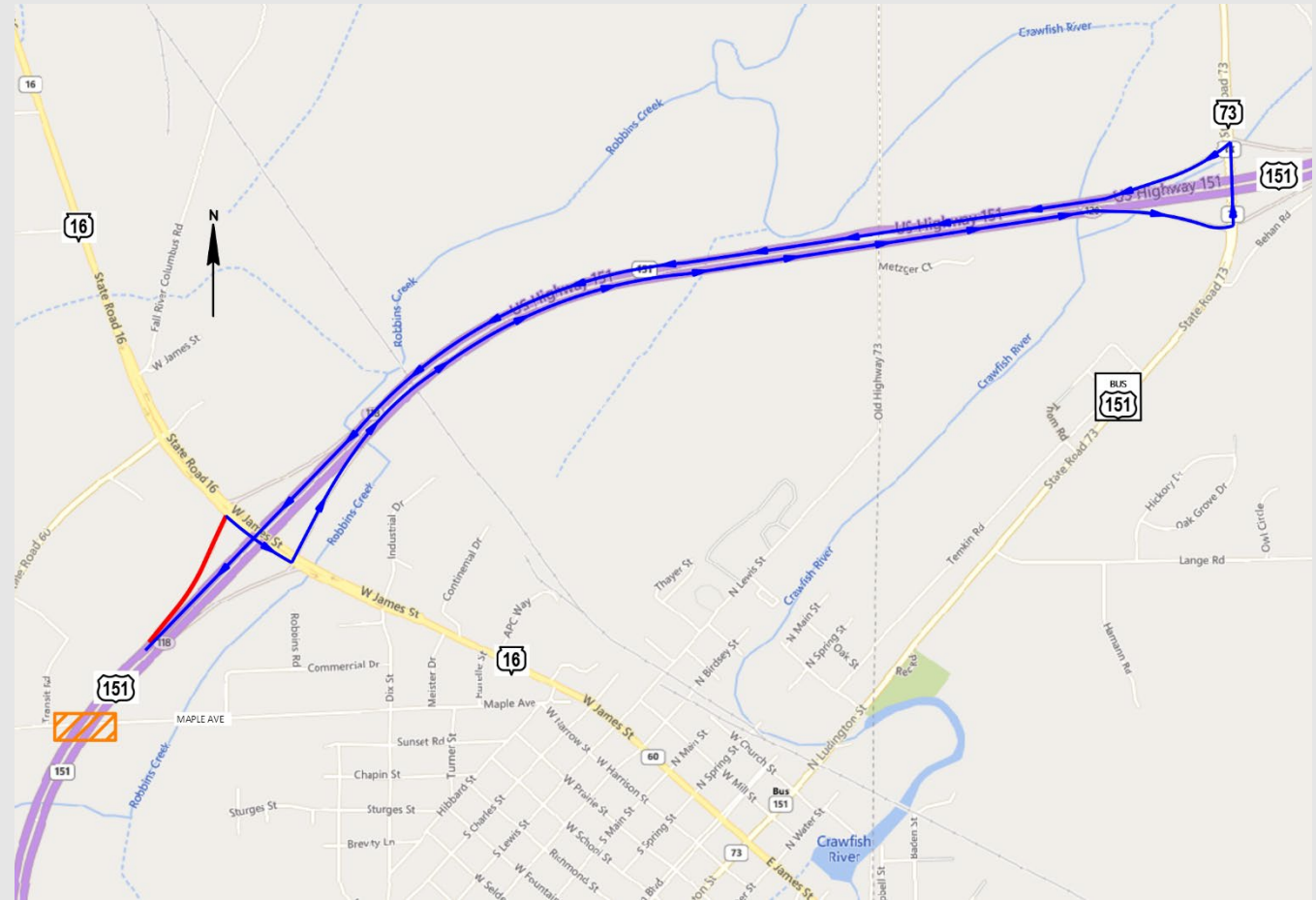
Traffic Control / Detour

- Single lane closures with shifted lane for the US 151 and I-94 bridges
- Work performed during nighttime, off-peak hour
- Straddle rumble strips on shifted lane stage (Stage 2)



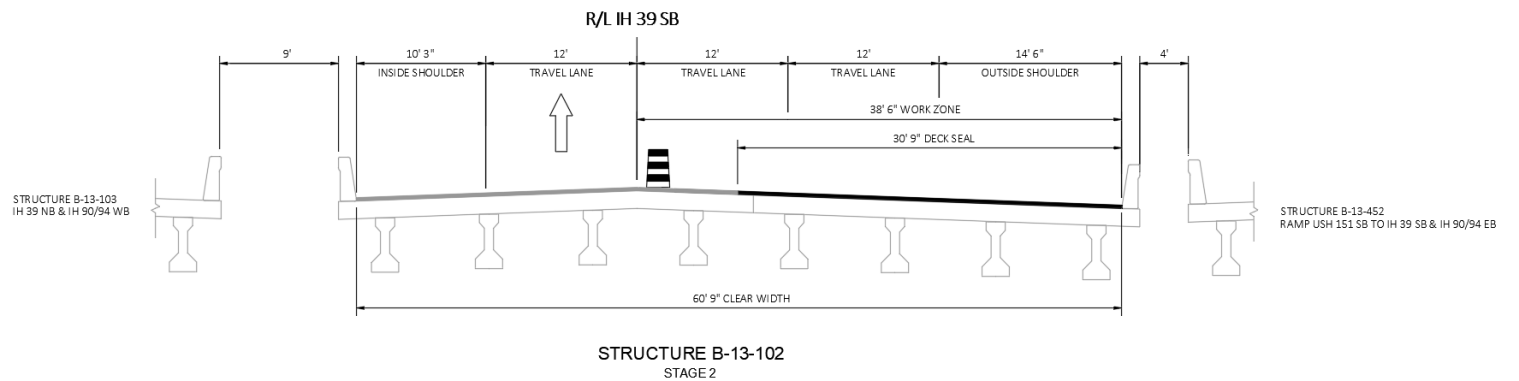
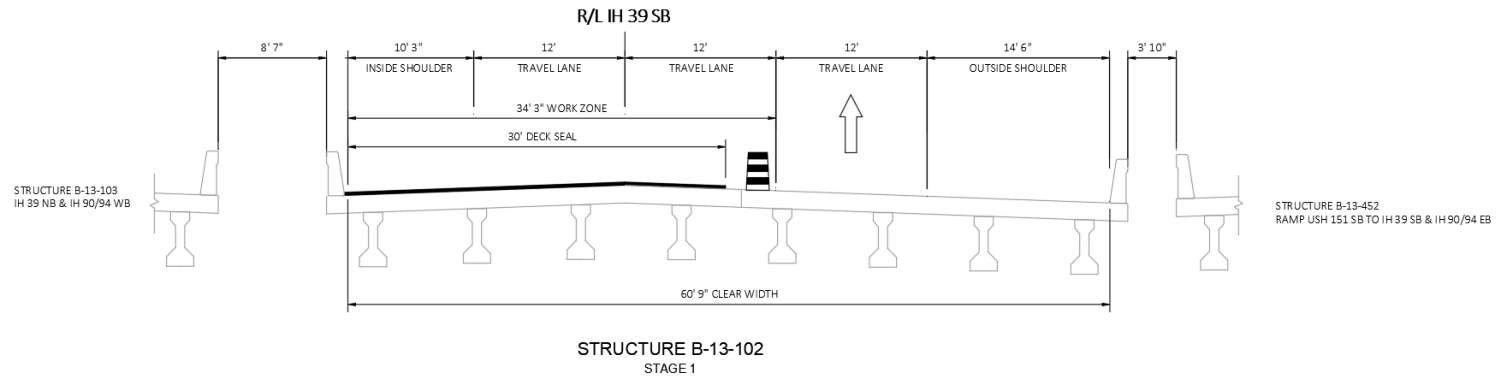
Traffic Control / Detour

- WIS 16 WB to US 151 SB ramp to be closed for US 151 SB Bridge B-11-83 (Stage 1)
- Use ramp at WIS 73 / US 151 interchange to access US 151 SB



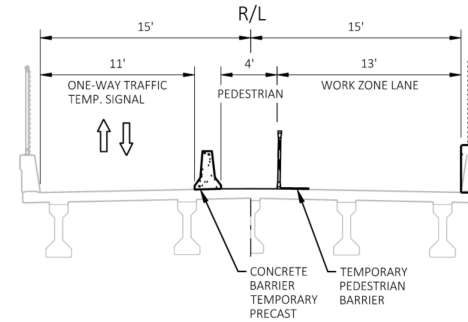
Traffic Control / Detour

- Double lane closure for I-39/90/94 bridges
- Work performed during nighttime, off-peak hour
- Utilize existing lanes

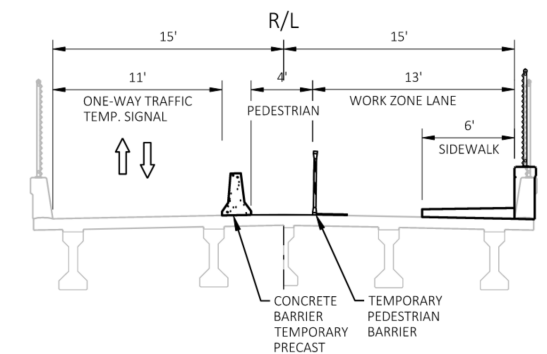


Traffic Control / Detour

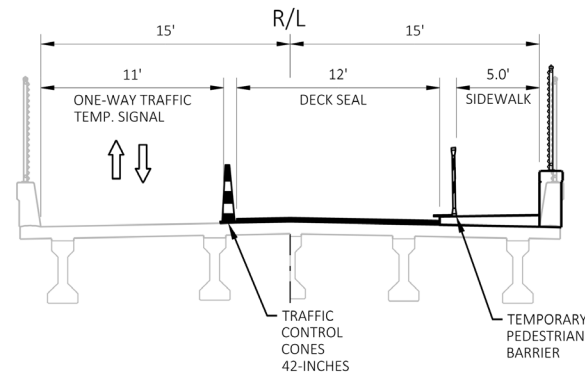
- One-Way Temporary Signals for Milwaukee St bridge B-13-131
- Work performed during nighttime, off-peak and daytime hours
- Lane and ramp closures on I-39 NB/90 WB



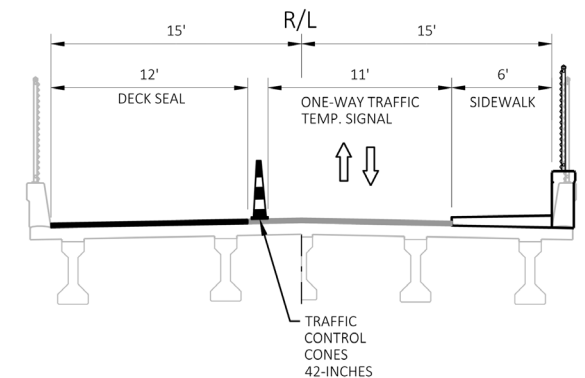
STRUCTURE B-13-131
STAGE 1A, 1B, 1C



STRUCTURE B-13-131
STAGE 2



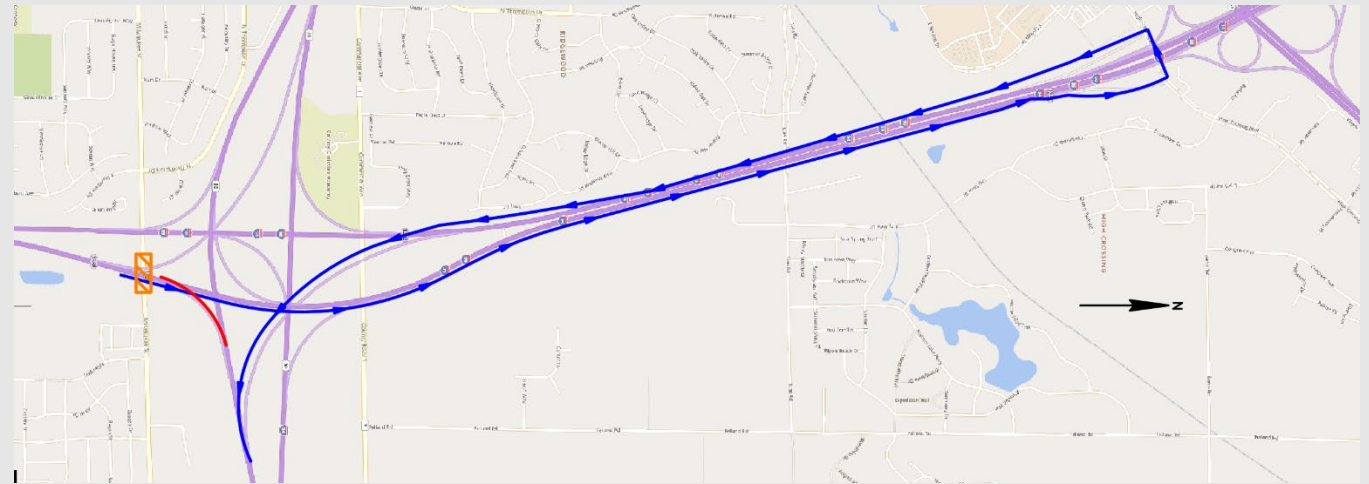
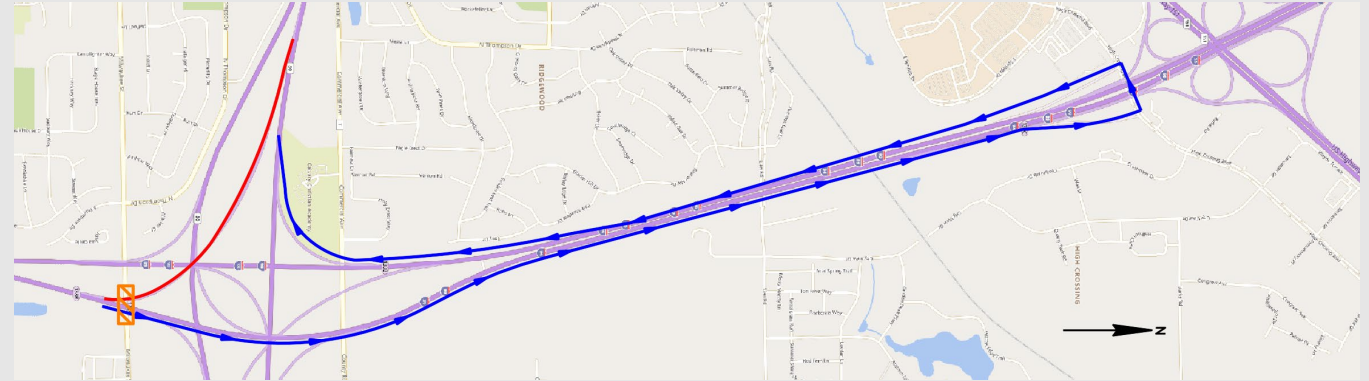
STRUCTURE B-13-131
STAGE 3



STRUCTURE B-13-131
STAGE 4

Traffic Control / Detour

- I-39 NB/90 WB ramp to WIS 30 WB and I-94 EB closed for Milwaukee St bridge B-13-131
- Use ramps at High Crossing Blvd interchange to turn-around



Schedule

- Environmental Document and 60% Plans – Fall 2025
- Final Plans Due – November 2026
- Construction – Anticipated Summer/Fall 2027



Thank you!

For more information, please contact:

Mark Sponem, P.E.
608-516-7962
mark.sponem@dot.wi.gov

Alex Hagen, P.E.
608-246-3830
alex.hagen@dot.wi.gov

Ryan Bailey, P.E.
414-978-0903
rbailey@benesch.com

Comment form available on project website at wisconsindot.gov
and search [I-39/90/94 and US 151 various bridge updates](#)

WisDOT Project ID: 1066-00-34

