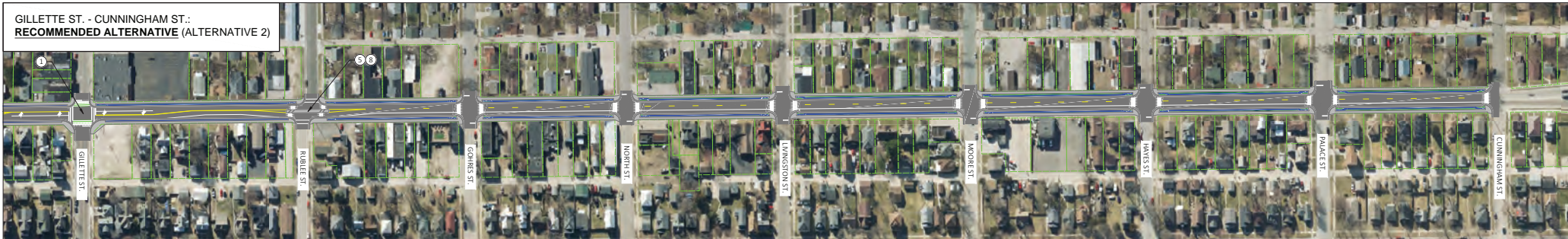


GILLETTE ST. - CUNNINGHAM ST.:
RECOMMENDED ALTERNATIVE (ALTERNATIVE 2)



22



Project ID 5221-09-00
WIS 35 Corridor Study
US 14/61 (South Ave.) to US 53 (Rose St.)
La Crosse County

PRELIMINARY 1/14/2025

LEGEND

- | | |
|--|---|
| | 1 Signal Infrastructure Improvements |
| | 2 Signal Operation Improvements |
| | 3 Partially Raised Crosswalk or Intersection |
| | 4 Bike Median Openings w/ RRFB Push Button |
| | 5 RRFB |
| | 6 Speed Feedback Signs |
| | 7 Driveway Right In/Out Only |
| | 8 Full Access from Other Driveways |
| Scale: 1 IN=50 FT | 9 No other Full Access Driveway |
| | 10 Public Road Access Changes Due to Geometric Improvements |
| Note: Aerial imagery may be out of date and shall be used for informational purposes only; may vary from present-day conditions. | 11 Signalized Intersection |
| | 12 Pedestrian Refuge |

ALTERNATIVE 2 (RECOMMENDED) TYPICAL SECTION:
GILLETTE ST. - CUNNINGHAM ST.



ALTERNATIVE 1 TYPICAL SECTION:
GILLETTE ST. - CUNNINGHAM ST.



GILLETTE ST. - CUNNINGHAM ST.:
ALTERNATIVE 1

