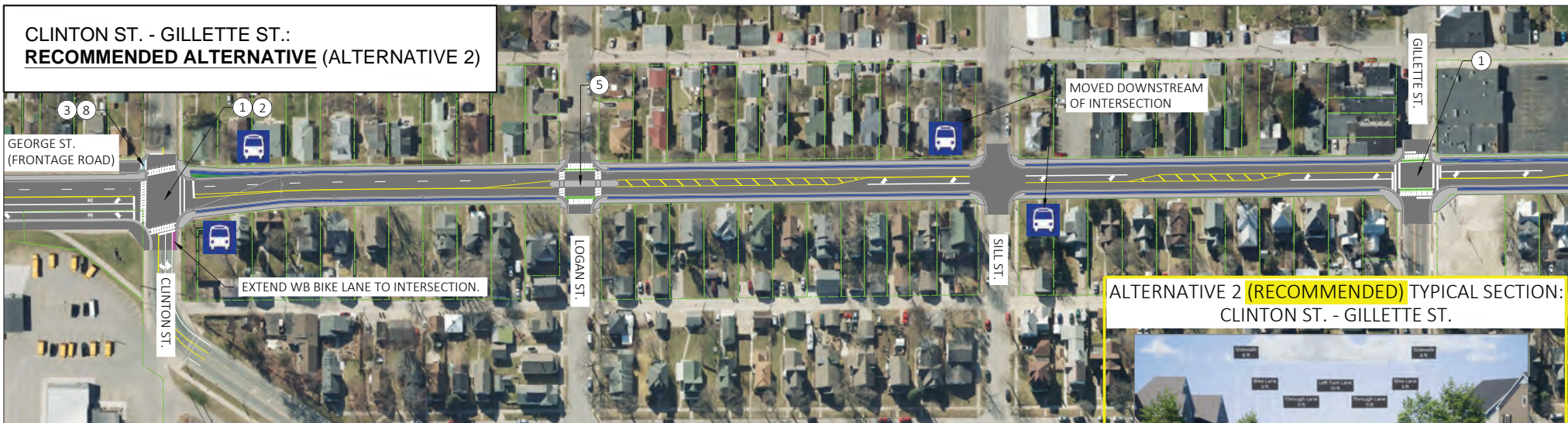
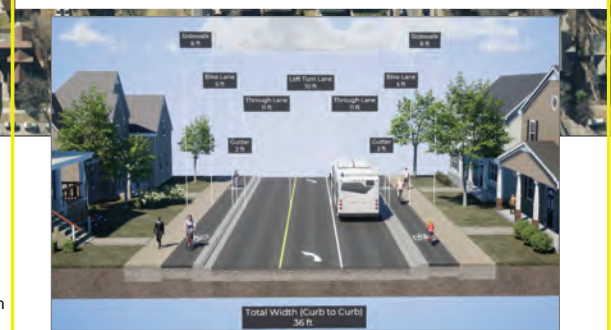


CLINTON ST. - GILLETTE ST.: RECOMMENDED ALTERNATIVE (ALTERNATIVE 2)



ALTERNATIVE 2 (RECOMMENDED) TYPICAL SECTION:
CLINTON ST. - GILLETTE ST.



ALTERNATIVE 1 TYPICAL SECTION:
CLINTON ST. - GILLETTE ST.

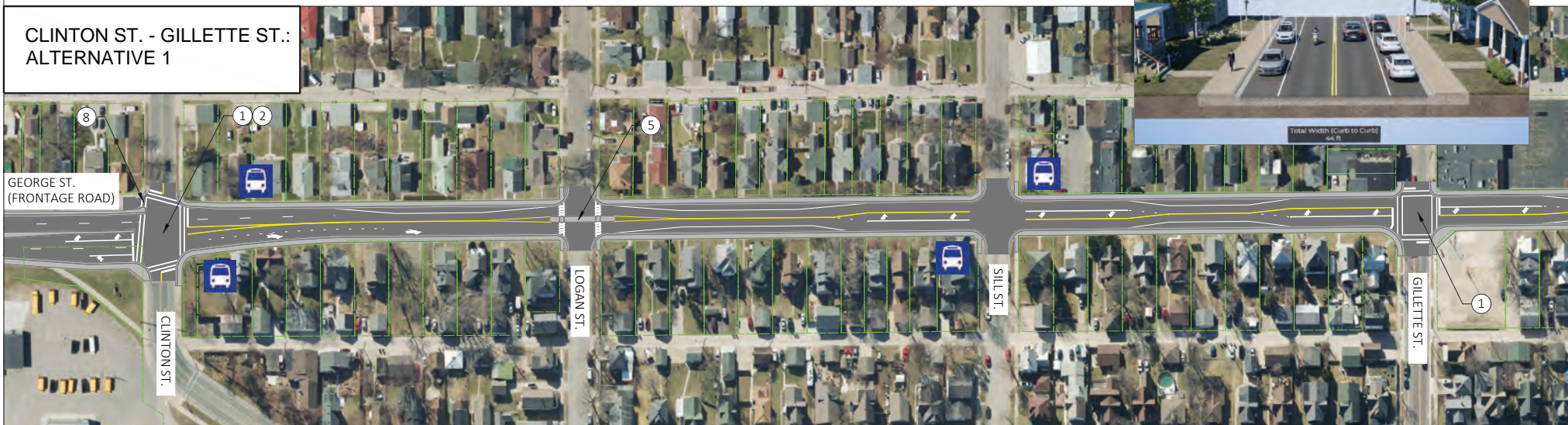


LEGEND

- | | | | |
|--|--|--|--|
| | Raised Crosswalk or Intersection | | ① Signal Infrastructure Improvements |
| | Pavement/Shared Use Path | | ② Signal Operation Improvements |
| | Curb & Gutter/Median/Sidewalk | | ③ Partially Raised Crosswalk or Intersection |
| | Sidewalk-Level Bike Lane | | ④ Bike Median Openings w/ RRFB Push Button |
| | Street-Level Bike Lane | | ⑤ RRFB |
| | Terrace/Grass Median | | ⑥ Speed Feedback Signs |
| | Eliminate Driveway* | | ⑦ Driveway Right In/Out Only |
| | Bus Stop | | ⑧ Public Road Access Changes Due to Geometric Improvements |
| | *Access to driveways will be maintained unless shown with 'Eliminate Driveway' linework. | | ⑨ Signalized Intersection |
| | Scale: 1 IN:50 FT | | ⑩ Pedestrian Refuge |
| | Note: Aerial imagery may be out of date and shall be used for informational purposes only; may vary from present-day conditions. | | |

PRELIMINARY 1/14/2025

CLINTON ST. - GILLETTE ST.: ALTERNATIVE 1



Project ID 5221-09-00
WIS 35 Corridor Study
US 14/61 (South Ave.) to
US 53 (Rose St.)
La Crosse County