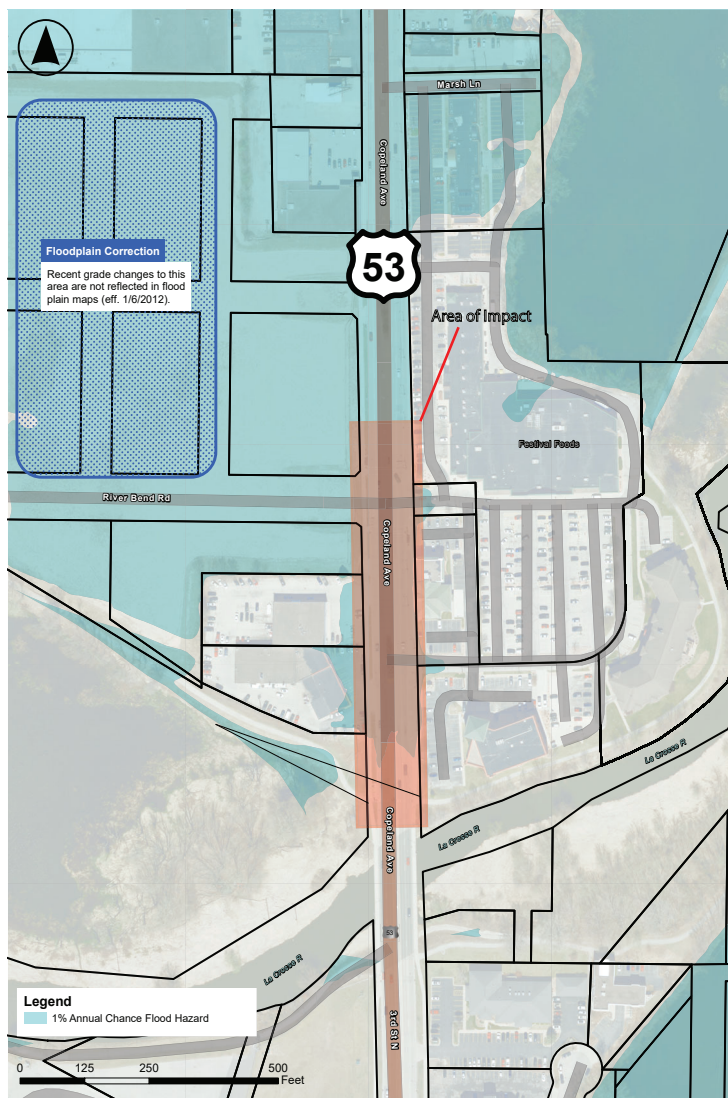


## DETAILED ALTERNATIVES

Raise Roadway Elevation between La Crosse River and River Bend Drive



### Issue

Just north of the La Crosse River, US 53 is at an elevation that is below the 100-year floodplain elevation. During periods of flooding, properties with US 53 as the only point of access could be blocked by standing water.

### Proposed Solution

Where practical, raise the profile of US 53 to above the level of the 100-year floodplain elevation. Raising the roadway elevation between the La Crosse River and River Bend Road will maintain “dry land access” to properties with direct access to US 53 or River Bend Road.

### Roadway Cross Section

A slice across a road showing roadway elements (pavement, curb, sidewalk, etc.) and slopes



### Roadway Profile

A slice along the centerline of a road that shows road grades and elevations

