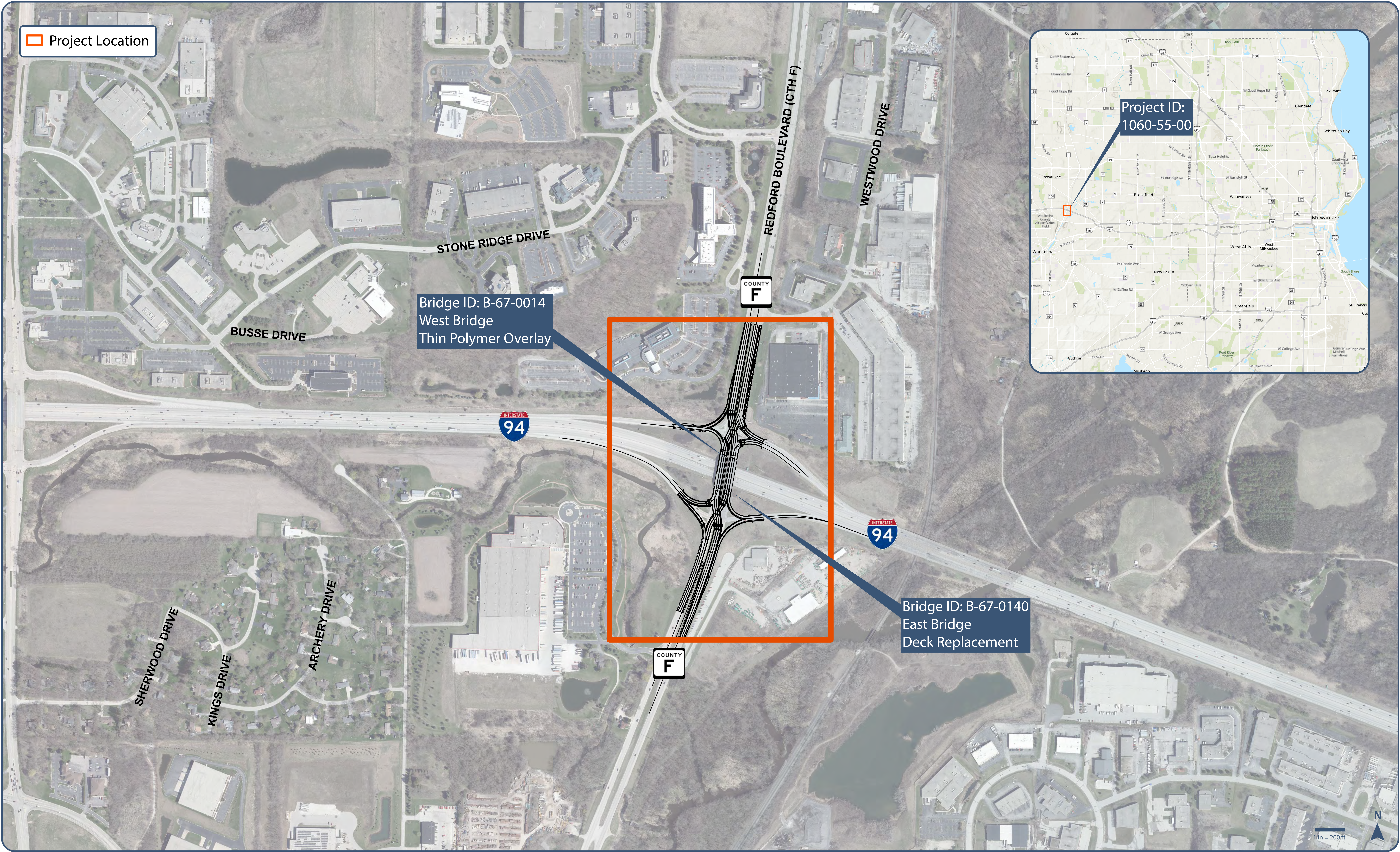




# I-94 FREEWAY INTERCHANGE WITH REDFORD BLVD (COUNTY F) PROJECT MAP





# I-94 FREEWAY INTERCHANGE WITH REDFORD BLVD (COUNTY F)

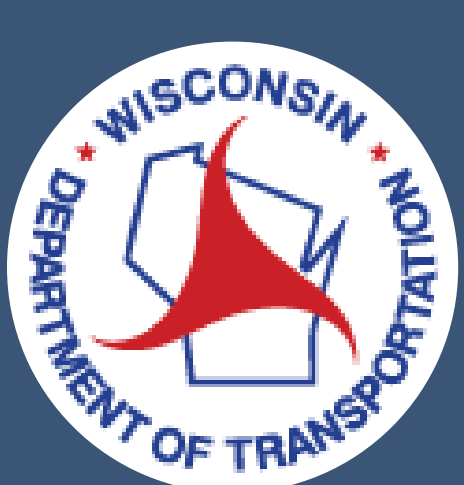
## PURPOSE & NEED

### Purpose

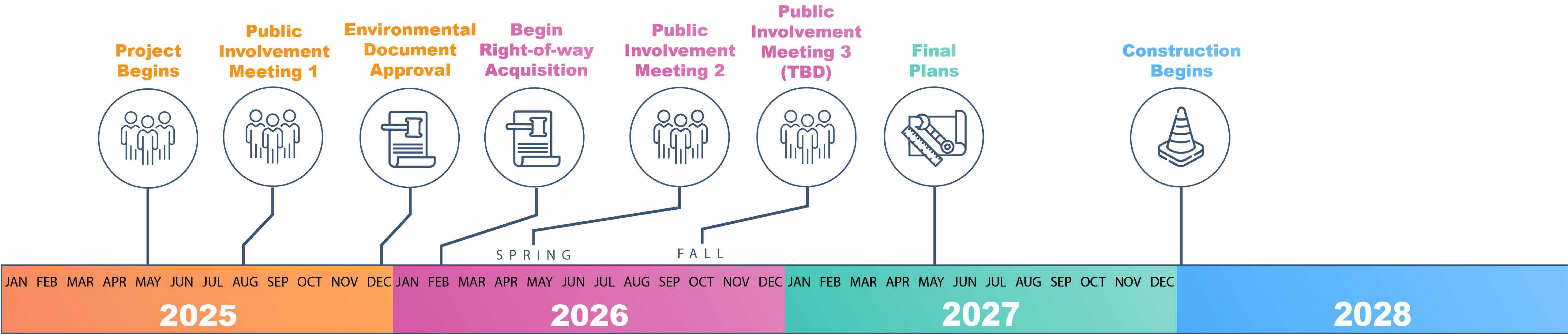
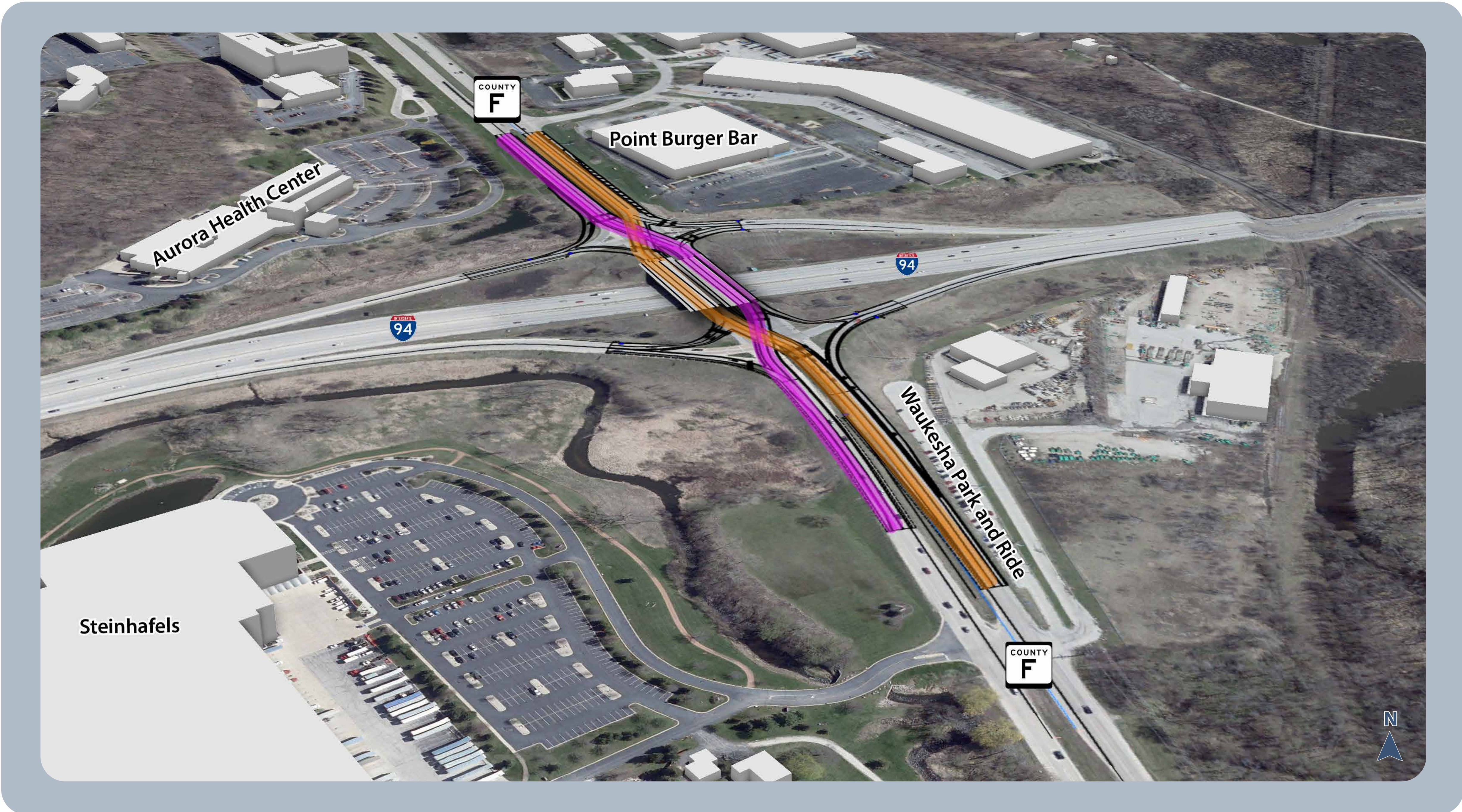
- Address the operational deficiencies at the County F Interchange
- Extend the service life of the bridges over I-94

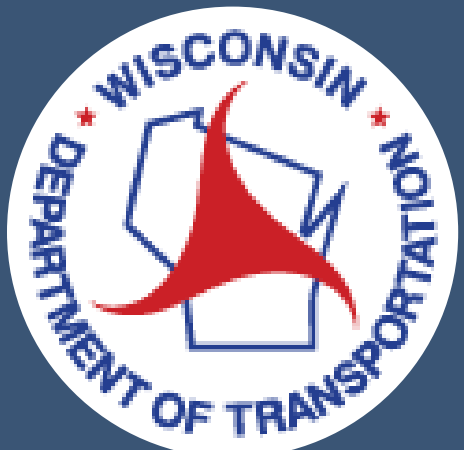
### Need

- Bridge Operations: B-67-0014 (Existing County F "west" bridge over I-94) was constructed in 1956 and widened in 1978. There have been improvements over the life of the structure such as a concrete deck overlay in 2009, girder painting in 2016 and a thin polymer and new bearings overlay in 2016.
  - Displays some delamination and failing thin polymer overlay (TPO) on bridge deck.
  - The TPO applied on the deck in 2016 is failing and needs repair.
  - Loose concrete from the underside deck and concrete surface damage on the substructure and parapets are present.
  - Expansion joints are in need of replacement.
- Bridge Operations: B-67-0140 (Existing County F "east" bridge over I-94) was constructed in 1977 and has had improvements over the life of the structure such as a concrete overlay in 2009, girder painting in 2016 and a thin polymer overlay in 2016.
  - Displays delamination and spalling on the bridge deck.
  - There are cracks on the bridge deck.
  - Infrared (IR) scans performed indicate that deck delamination exceeds 50% of the deck area warranting deck replacement.
- Safety & Operations: B-67-0140 (Existing County F "east" bridge over I-94) was constructed in 1977 and has had improvements over the life of the structure such as a concrete overlay in 2009, girder painting in 2016 and a thin polymer overlay in 2016.
  - Operational analysis has identified southbound queues on County F regularly extend past the Westwood Drive intersection to the north of the I-94 ramps intersection, due to the southbound inside through lane become an exclusive left lane (trap lane) for the eastbound ramp.
  - Northbound pre-left turn queuing extends beyond the available storage.
  - Several movement exceed acceptable level so service, reaching LOS F.



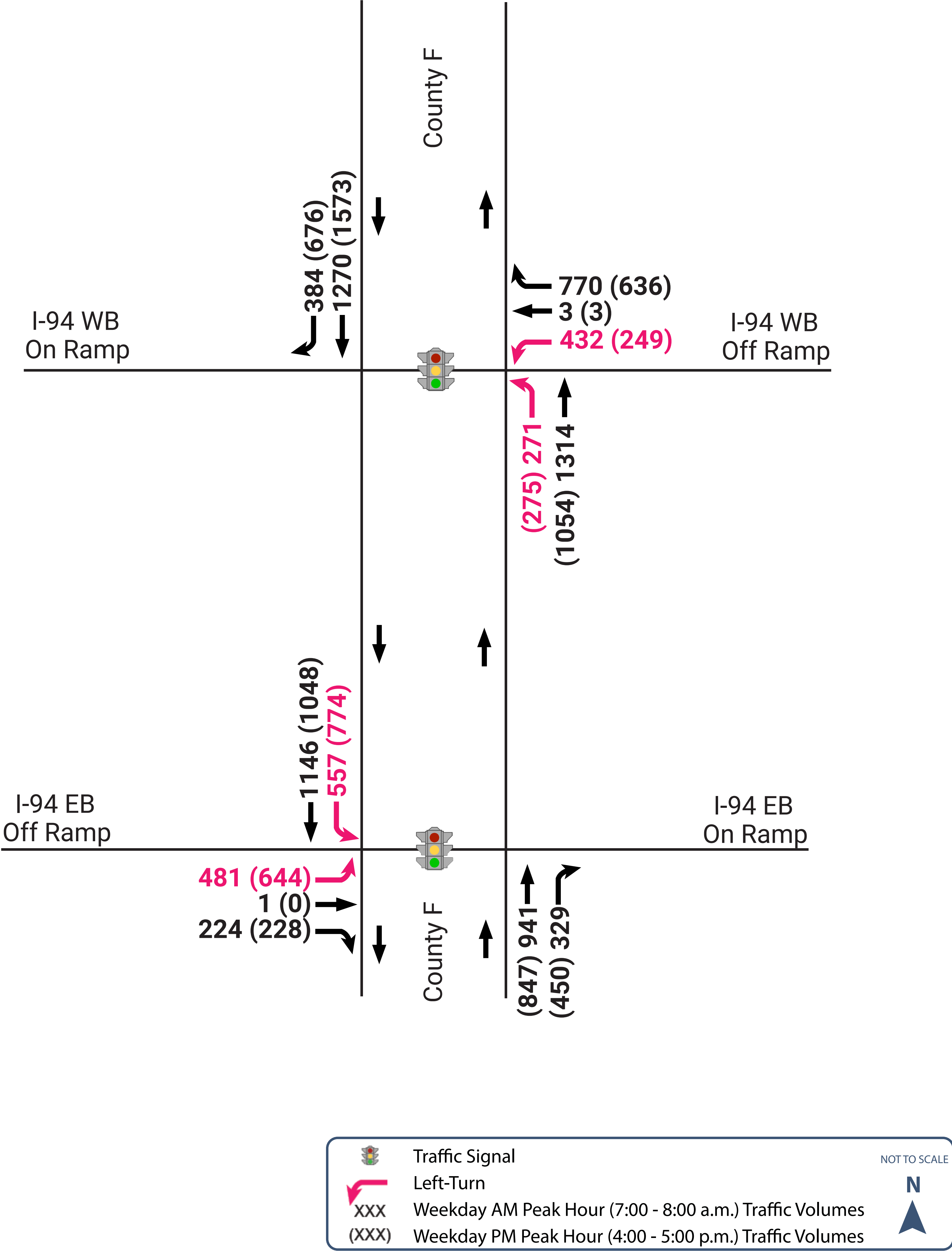
# I-94 FREEWAY INTERCHANGE WITH REDFORD BLVD (COUNTY F) PROJECT SCHEDULE



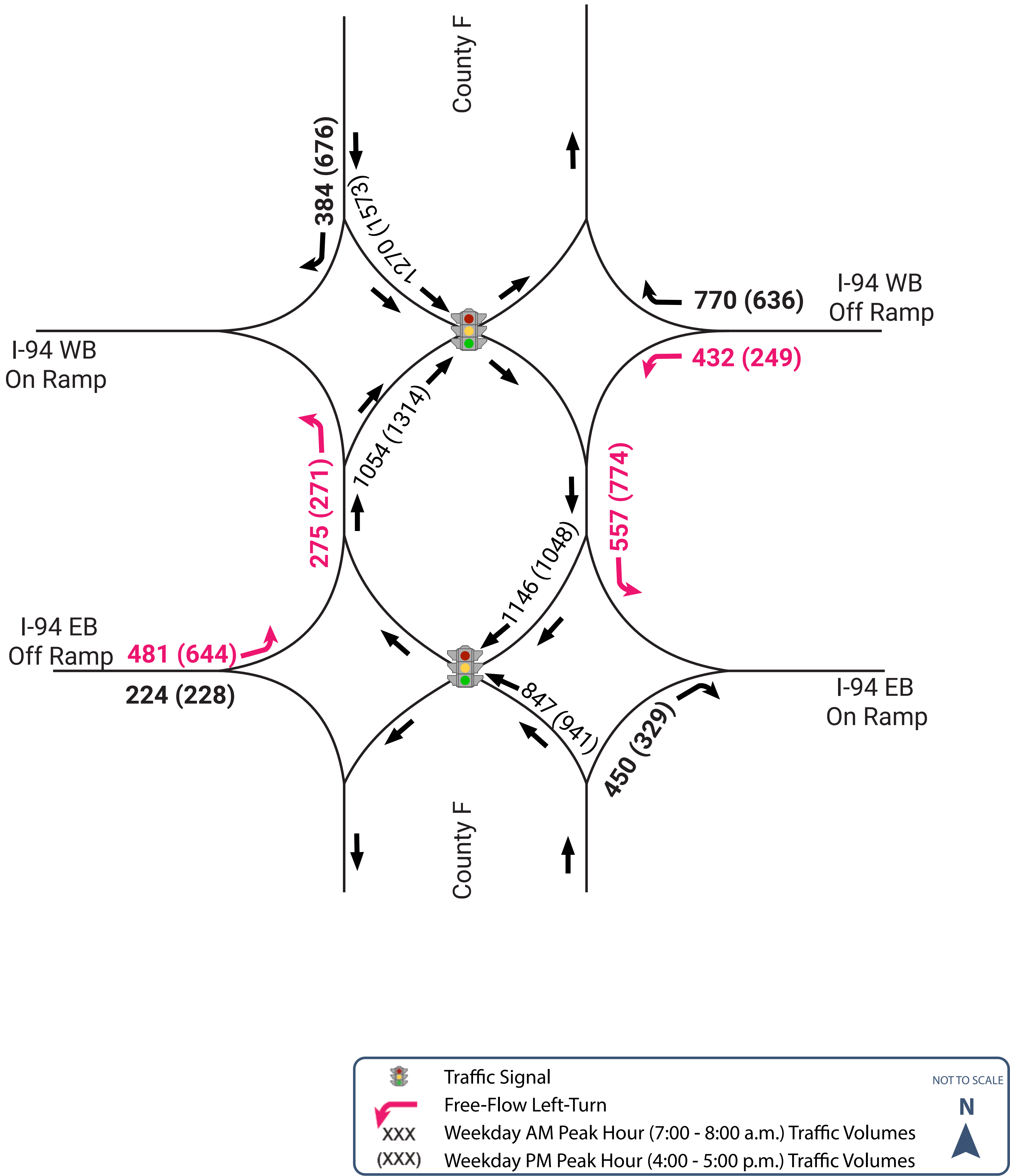


# I-94 FREEWAY INTERCHANGE WITH REDFORD BLVD (COUNTY F) TRAFFIC

## Existing Volumes



## Existing / New Configuration Volumes





# I-94 FREEWAY INTERCHANGE WITH REDFORD BLVD (COUNTY F) DIVERGING DIAMOND INTERCHANGE CONFIGURATION

