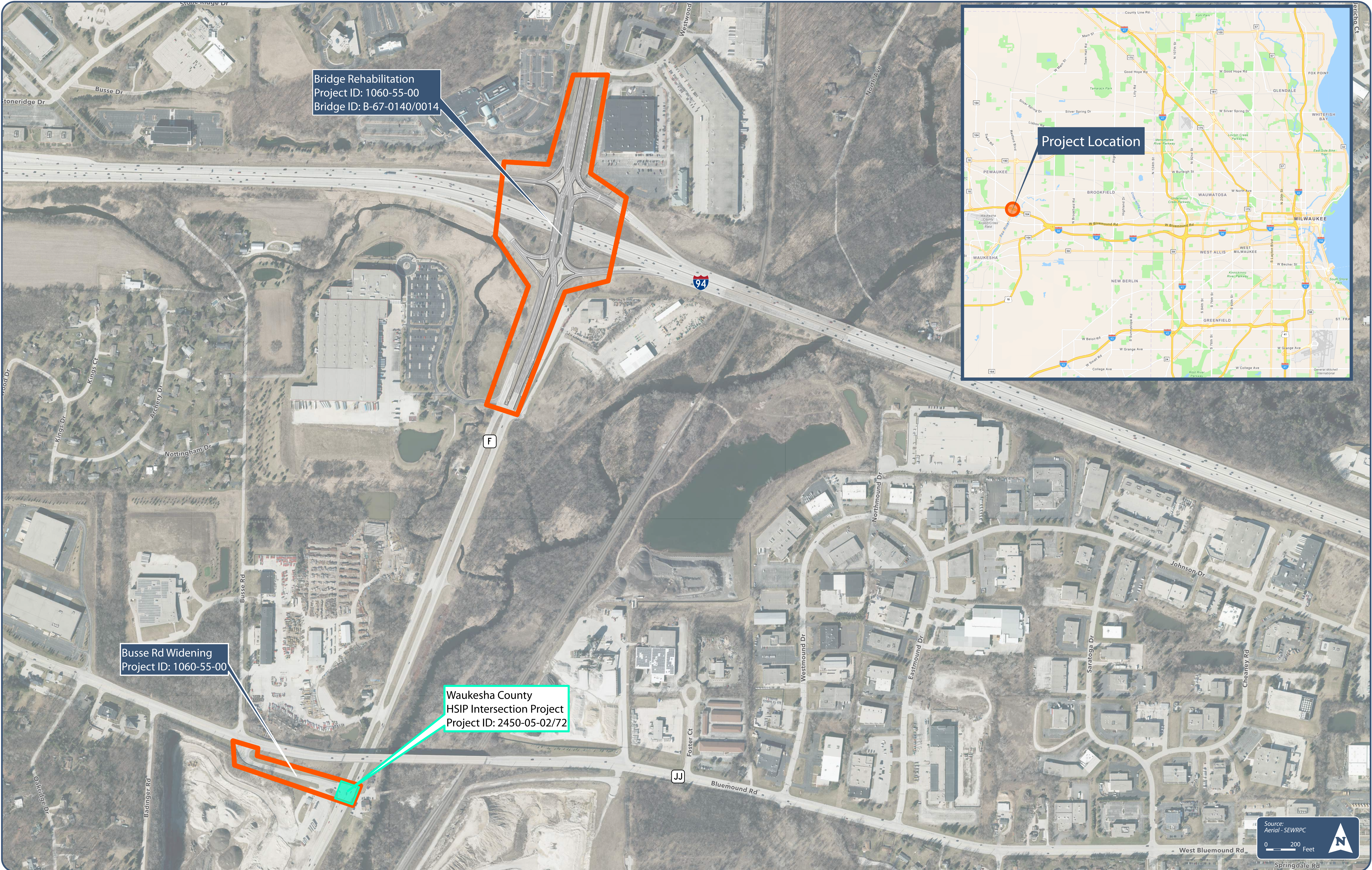




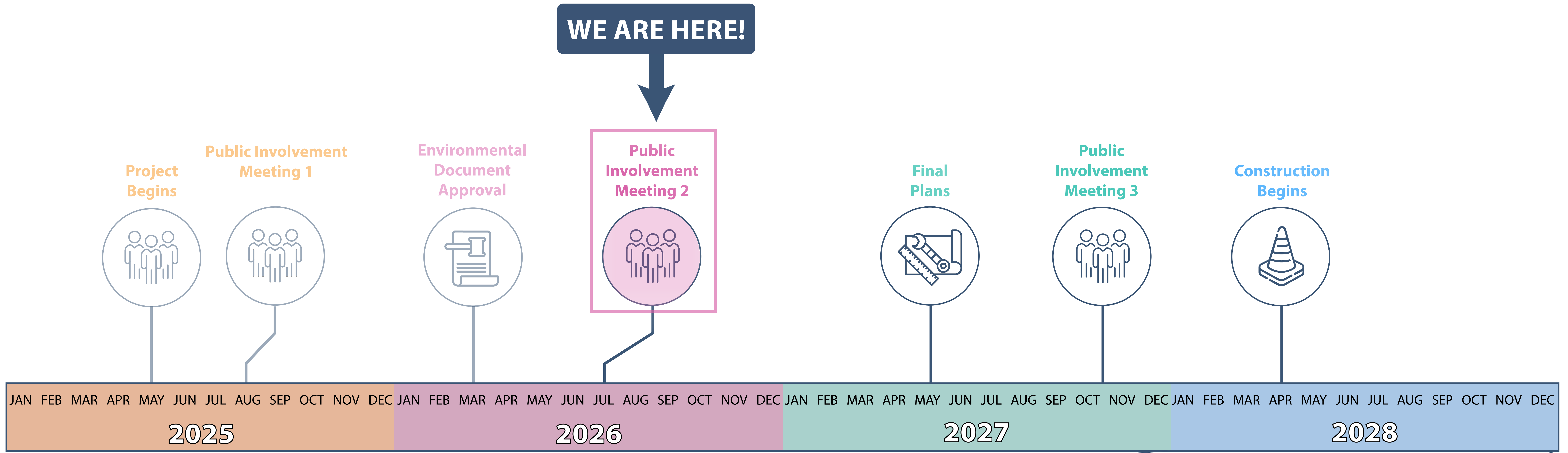
# I-94 FREEWAY INTERCHANGE WITH REDFORD BLVD (COUNTY F) PROJECT LOCATION





# I-94 FREEWAY INTERCHANGE WITH REDFORD BLVD (COUNTY F)

## PROJECT & CONSTRUCTION SCHEDULES



CONSTRUCTION SCHEDULE - 2028												
JAN	FEB	MAR	APR	MAY	JUN	JUL	AUG	SEP	OCT	NOV	DEC	
					COUNTY F & I-94 INTERCHANGE CONSTRUCTION (INTERCHANGE CLOSED)							
					RAMP A CLOSED							
					RAMP B CLOSED							
					RAMP C CLOSED							
					RAMP D CLOSED							
			COUNTY F (WESTWOOD DR - BUSSE RD) CLOSED THROUGHOUT CONSTRUCTION									
			BUSSE RD WIDENING & HSIP INTERSECTION GEOMETRICS									
									COUNTY F / BUSSE RD SIGNAL INSTALLATION			



# I-94 FREEWAY INTERCHANGE WITH REDFORD BLVD (COUNTY F)

## PURPOSE & NEED

### Purpose

- Address the operational deficiencies at the County F Interchange
- Extend the service life of the bridges over I-94

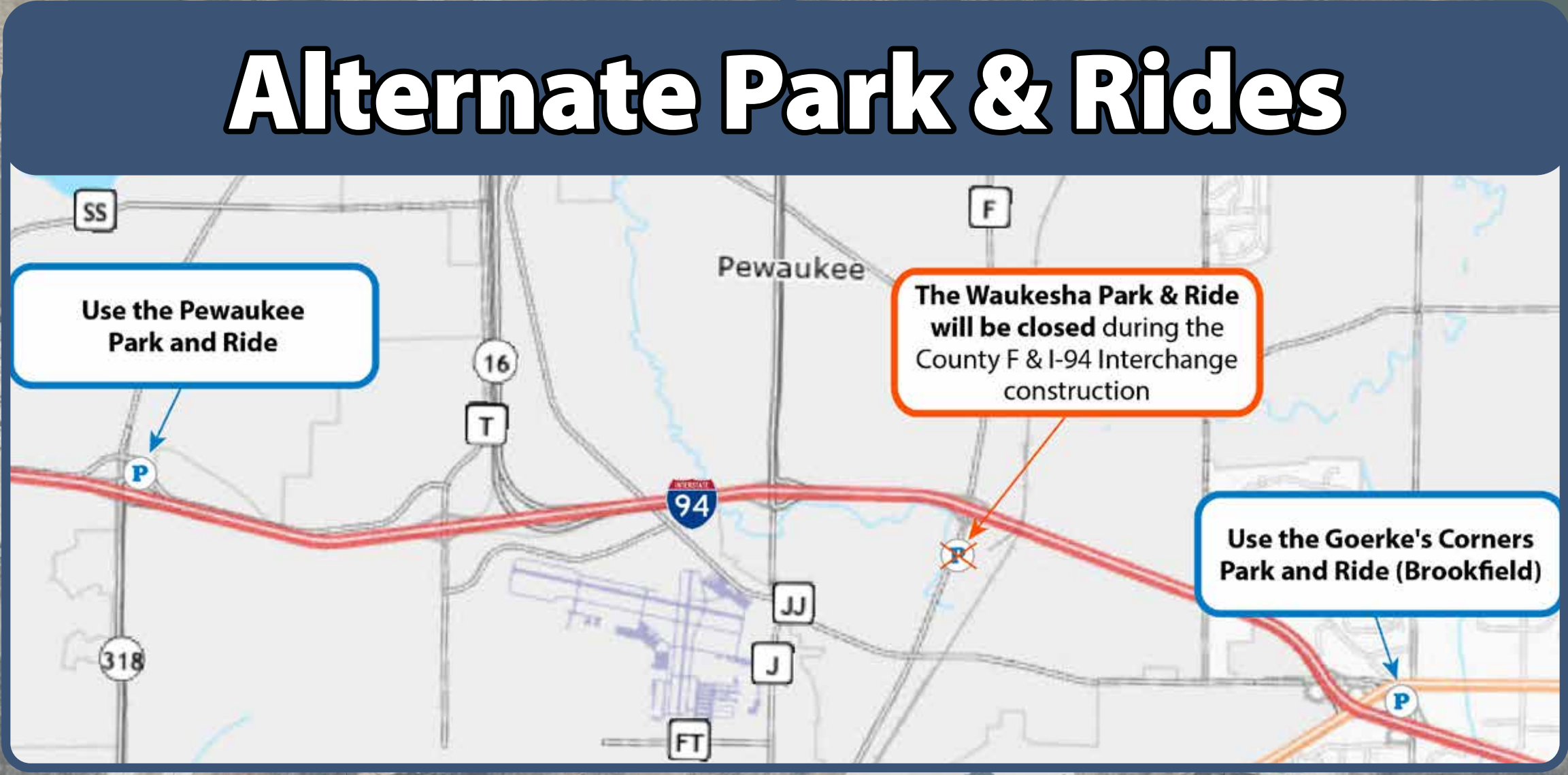
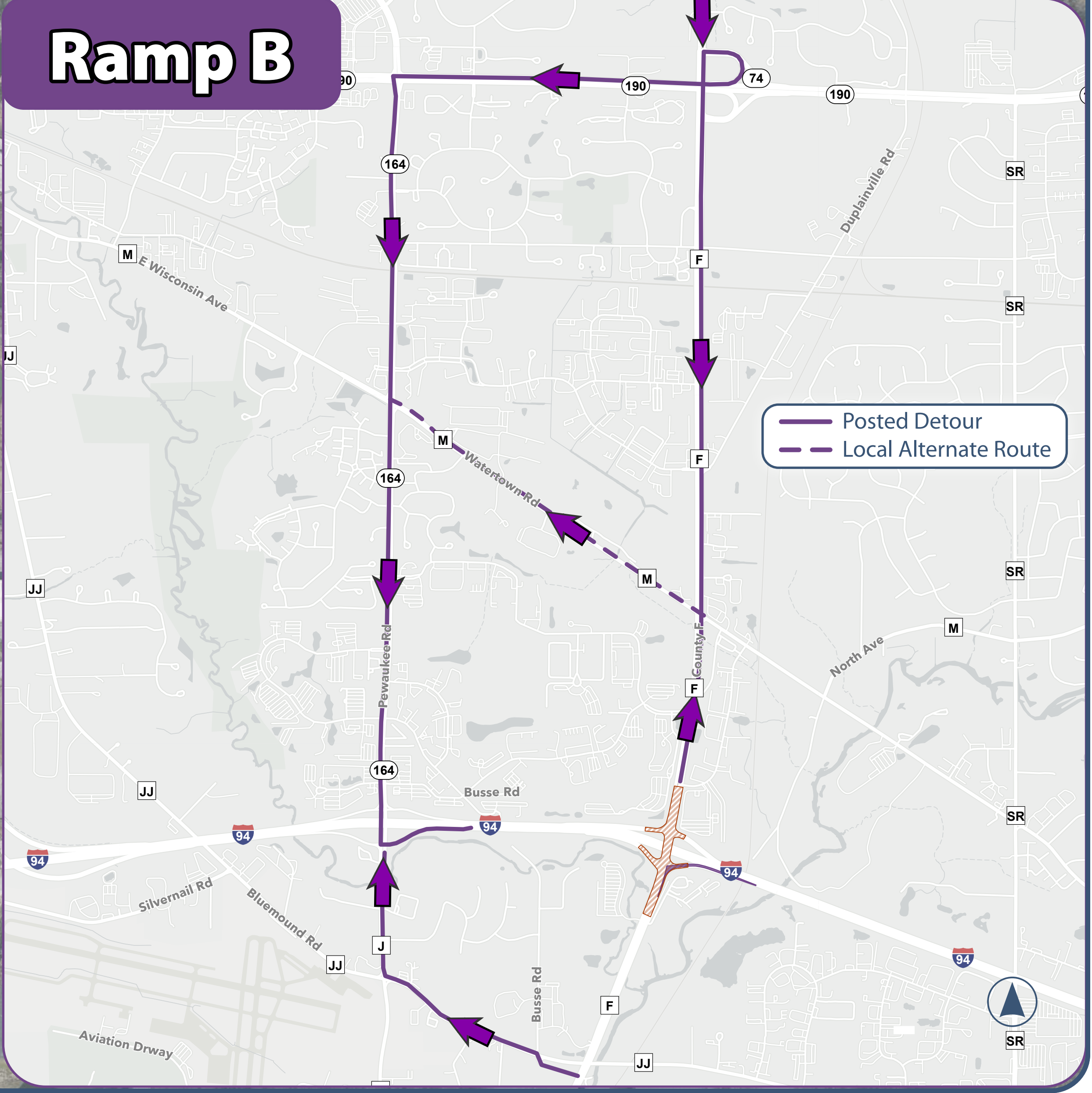
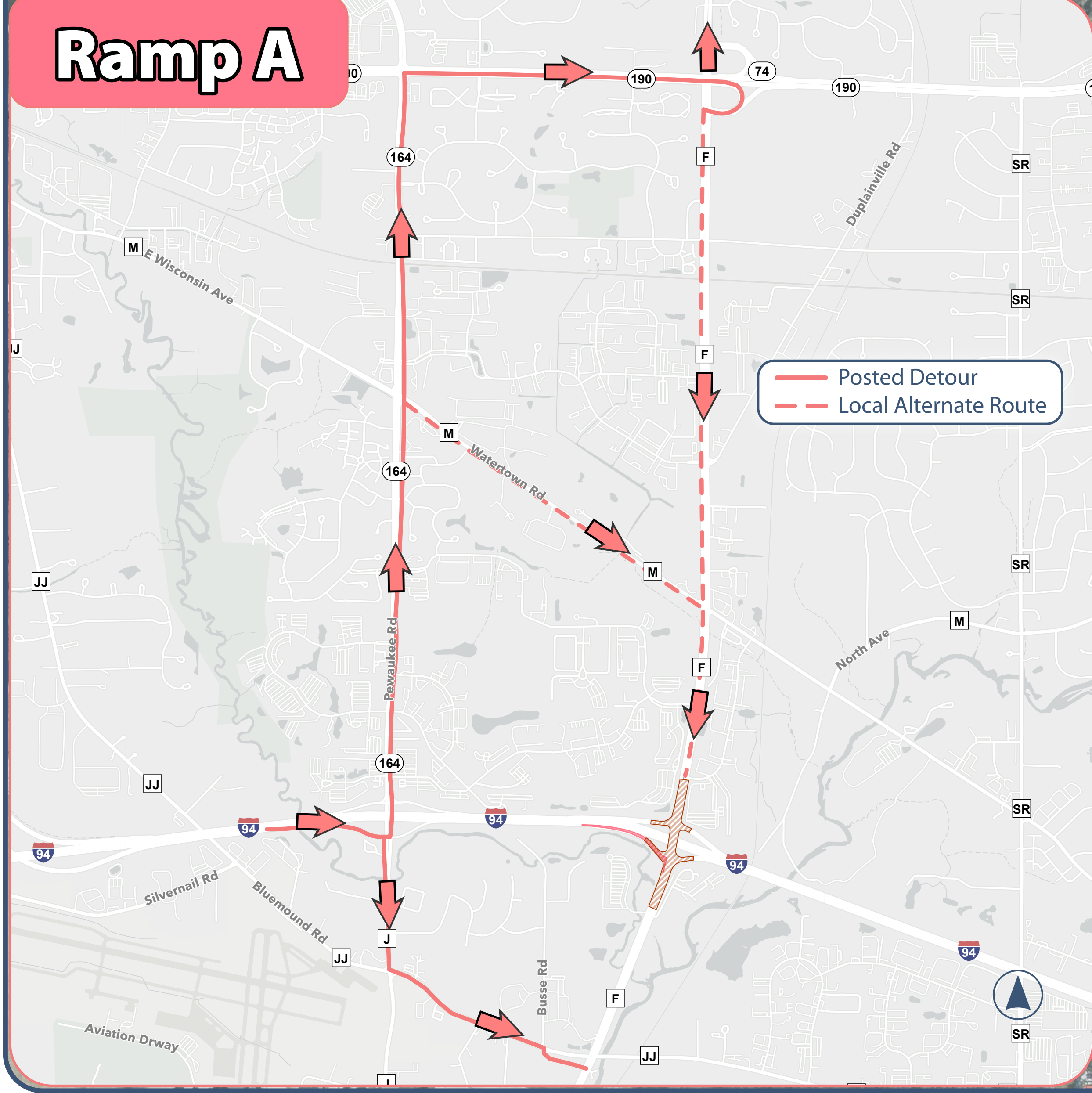
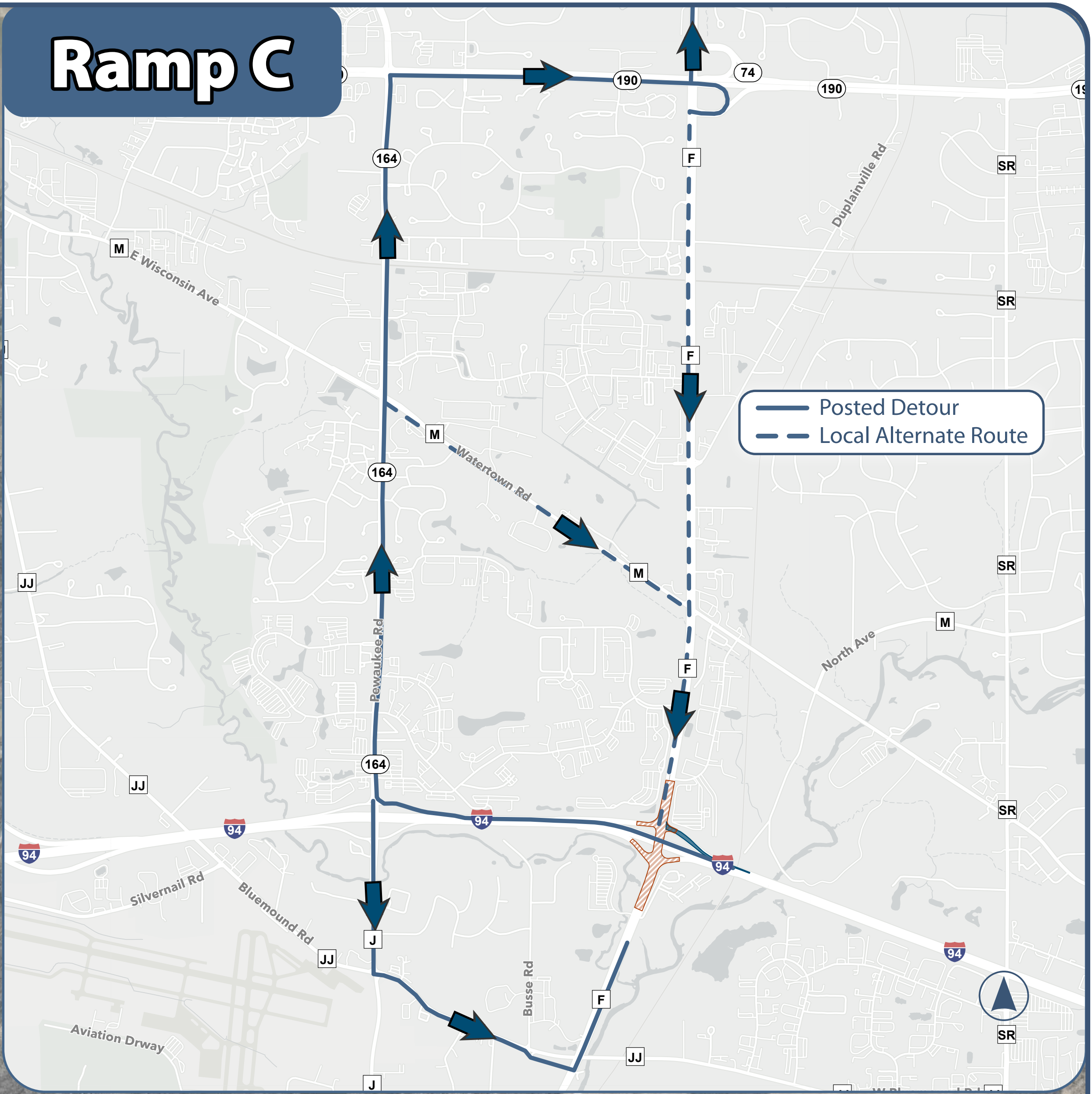
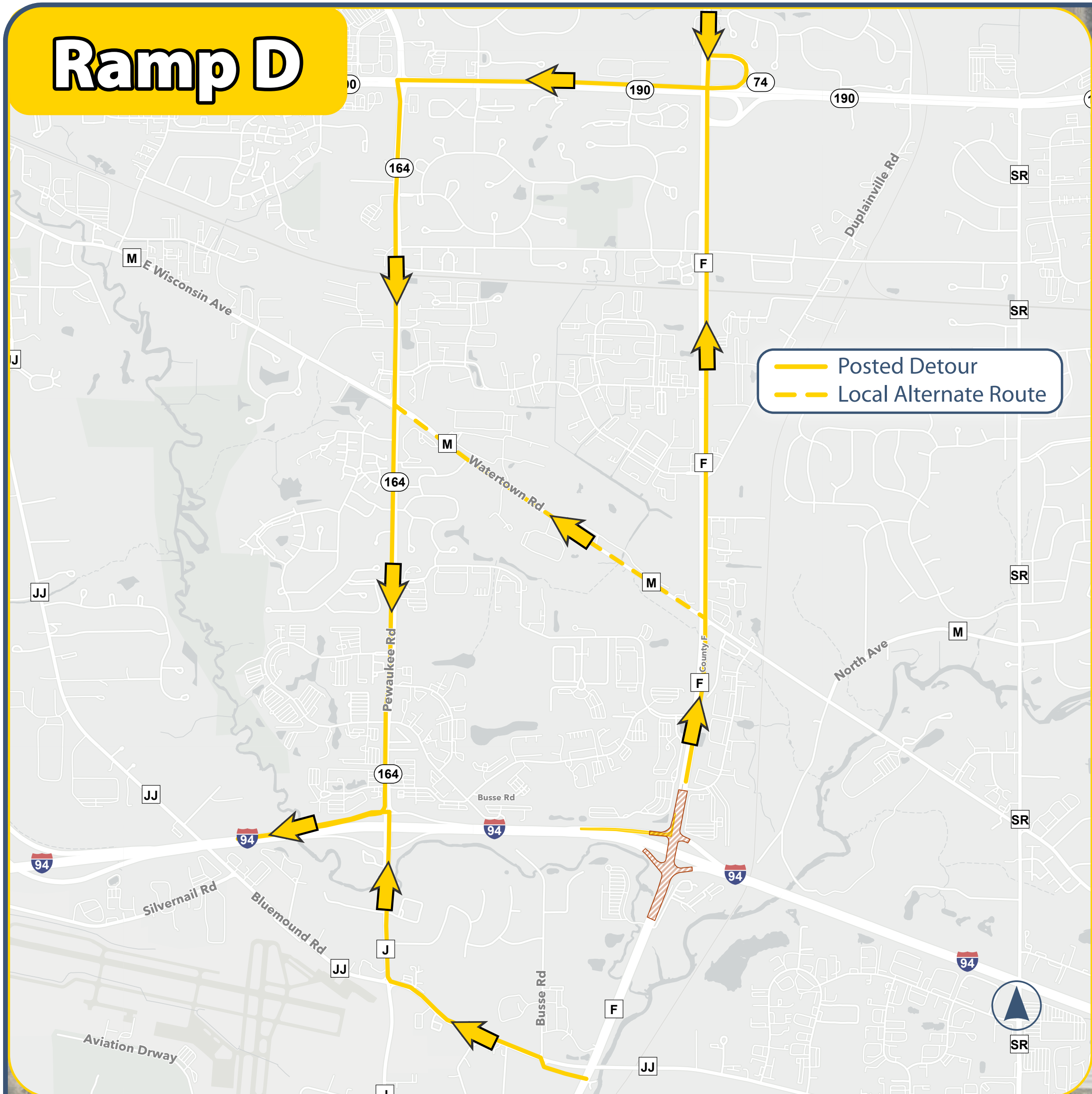
### Need

- **Bridge Condition: B-67-0014 (Existing County F “west” bridge over I-94) was constructed in 1956 and widened in 1978. There have been improvements over the life of the structure such a concrete deck overlay in 2009, girder painting in 2016 and a thin polymer and new bearings overlay in 2016.**
  - Displays some delamination and failing thin polymer overlay (TPO) on bridge deck.
  - The TPO applied on the deck in 2016 is failing and needs repair.
  - Loose concrete from the underside deck and concrete surface damage on the substructure and parapets are present.
  - Expansion joints are in need of replacement.
- **Bridge Condition: B-67-0140 (Existing County F “east” bridge over I-94) was constructed in 1977 and has had improvements over the life of the structure such as a concrete overlay in 2009, girder painting in 2016 and a thin polymer overlay in 2016.**
  - Displays delamination and spalling on the bridge deck.
  - There are cracks on the bridge deck.
  - Infrared (IR) scans performed indicate that deck delamination exceeds 50% of the deck area warranting deck replacement.
- **Safety & Operations: B-67-0140 (Existing County F “east” bridge over I-94) was constructed in 1977 and has had improvements over the life of the structure such as a concrete overlay in 2009, girder painting in 2016 and a thin polymer overlay in 2016.**
  - Operational analysis has identified southbound queues on County F regularly extend past the Westwood Drive intersection to the north of the I-94 ramps intersection, due to the southbound inside through lane become an exclusive left lane (trap lane) for the eastbound ramp.
  - Northbound pre-left turn queuing extends beyond the available storage.
  - Several movement exceed acceptable level so service, reaching LOS F.



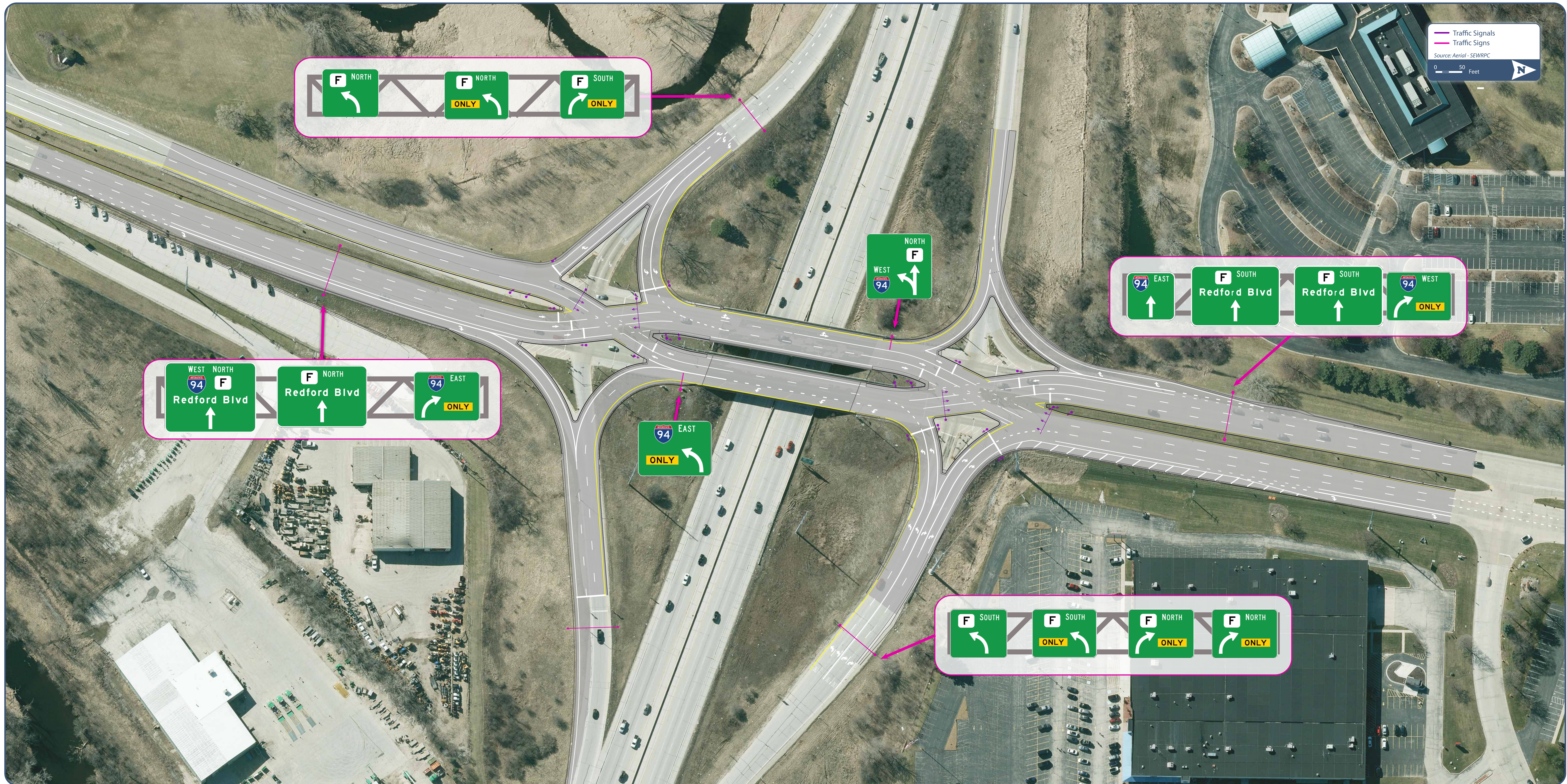
# I-94 FREEWAY INTERCHANGE WITH REDFORD BLVD (COUNTY F)

## RAMP CLOSURES AND DETOUR ROUTES



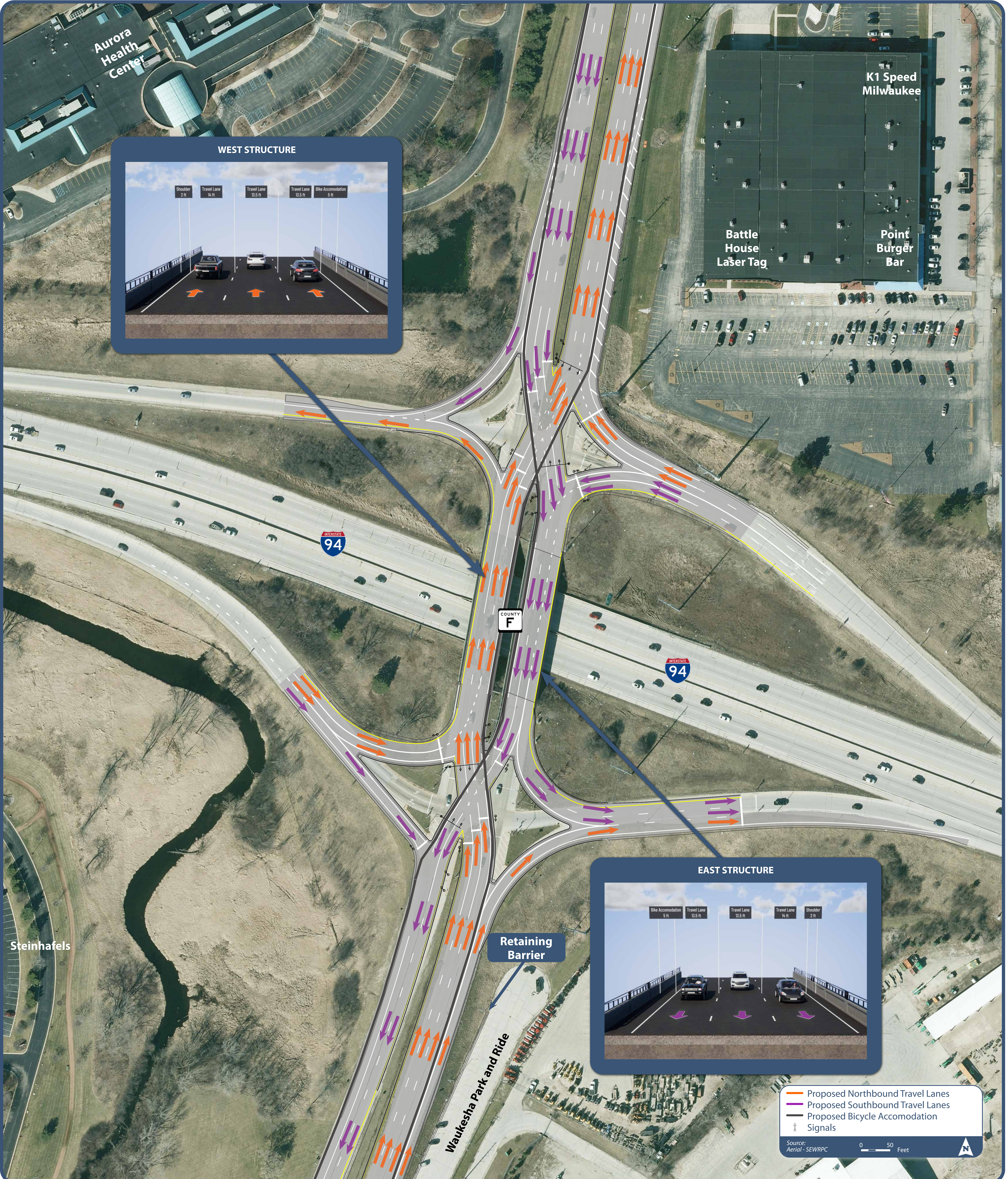


# I-94 FREEWAY INTERCHANGE WITH REDFORD BLVD (COUNTY F) DDI DETAILS - SIGNALS & SIGNAGE





# I-94 FREEWAY INTERCHANGE WITH REDFORD BLVD (COUNTY F) DIVERGING DIAMOND INTERCHANGE CONFIGURATION





# I-94 FREEWAY INTERCHANGE WITH REDFORD BLVD (COUNTY F)

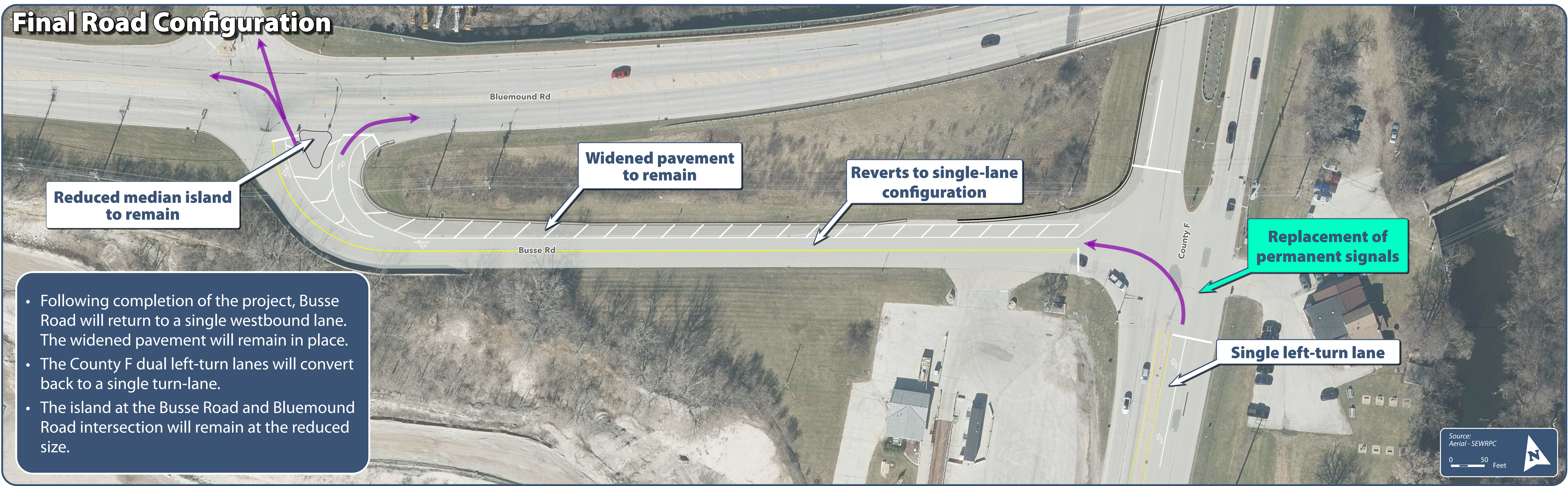
## BUSSE ROAD DETOUR

### Temporary Road Widening



- A temporary new westbound lane will be constructed on Busse Road to support traffic from the County F / I-94 interchange detour.
- An additional left-turn lane will be marked on County F to support the two westbound lanes on Busse Road.
- The island at the Busse Road and Bluemound Road intersection will be reduced in size to accommodate dual truck turning movements.

### Final Road Configuration



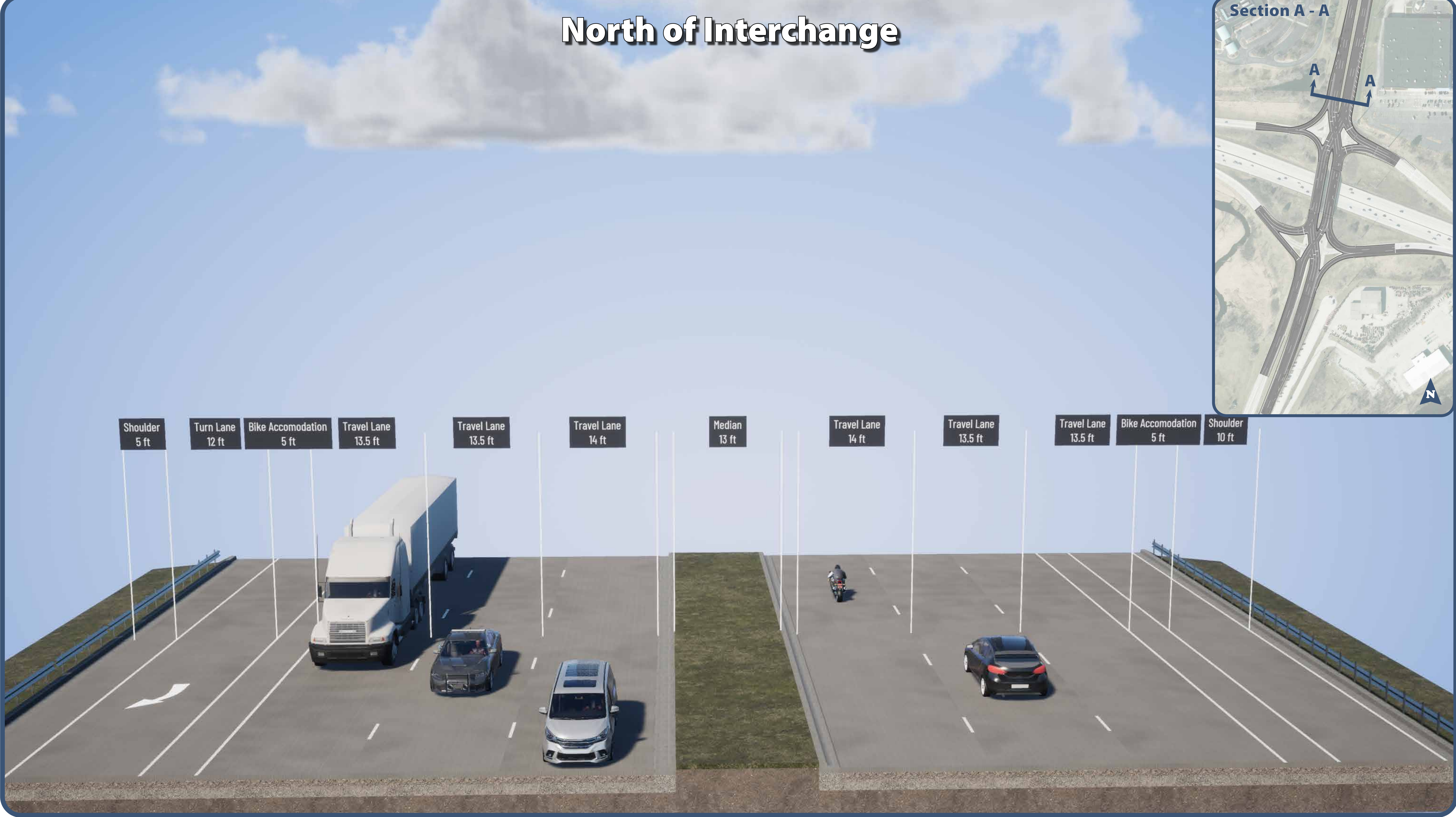
- Following completion of the project, Busse Road will return to a single westbound lane. The widened pavement will remain in place.
- The County F dual left-turn lanes will convert back to a single turn-lane.
- The island at the Busse Road and Bluemound Road intersection will remain at the reduced size.



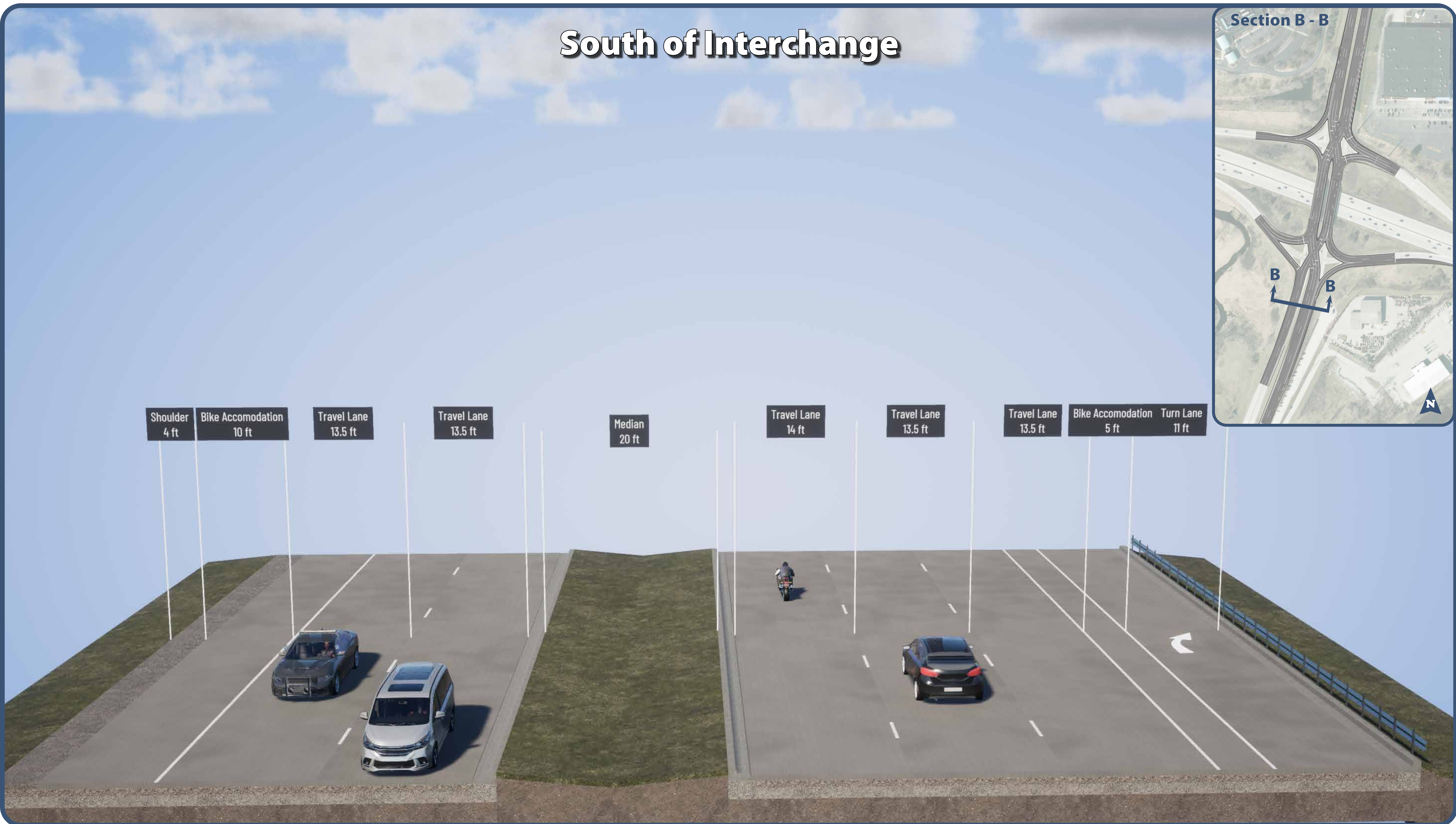
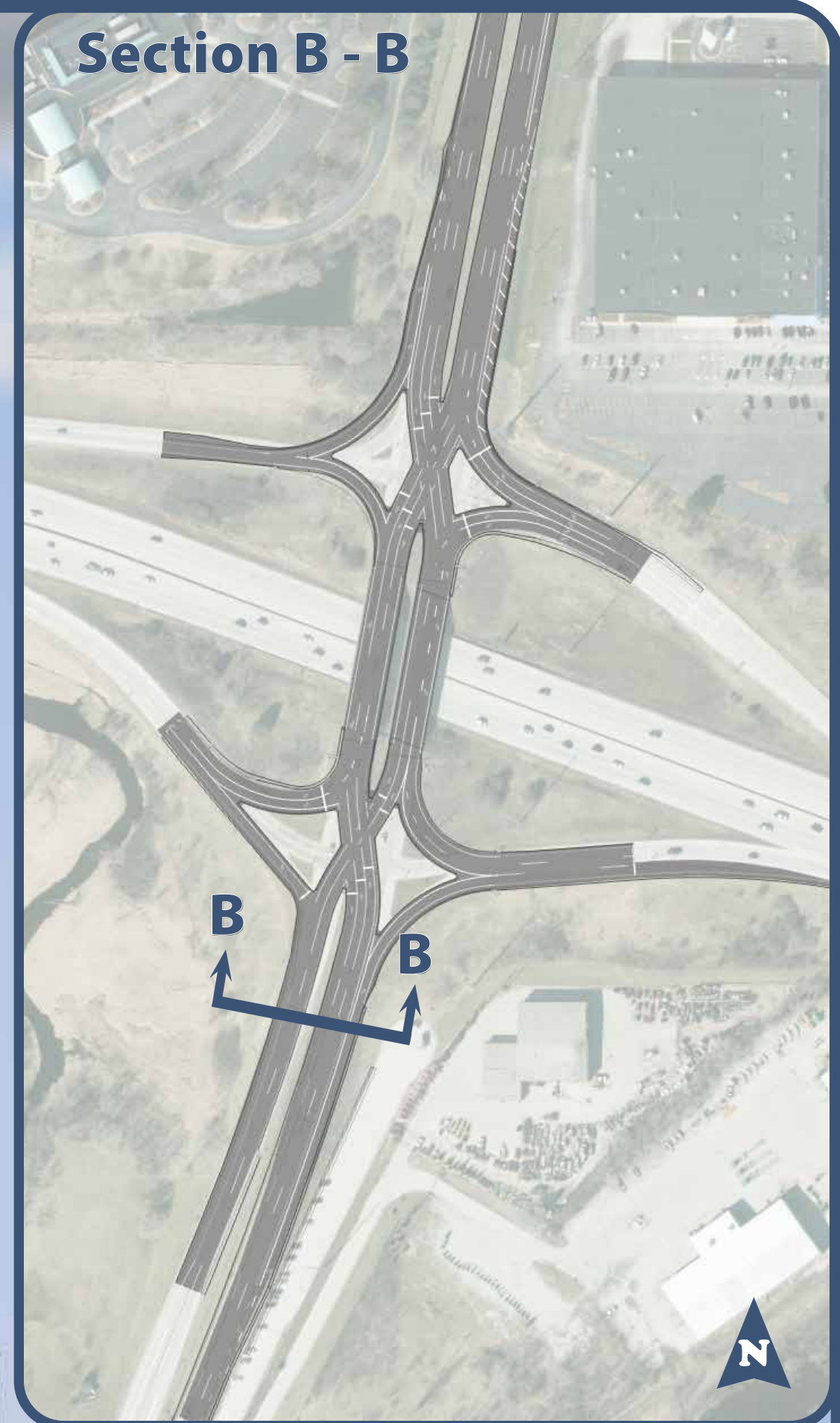
# I-94 FREEWAY INTERCHANGE WITH REDFORD BLVD (COUNTY F)

## SECTION CUTS

### North of Interchange



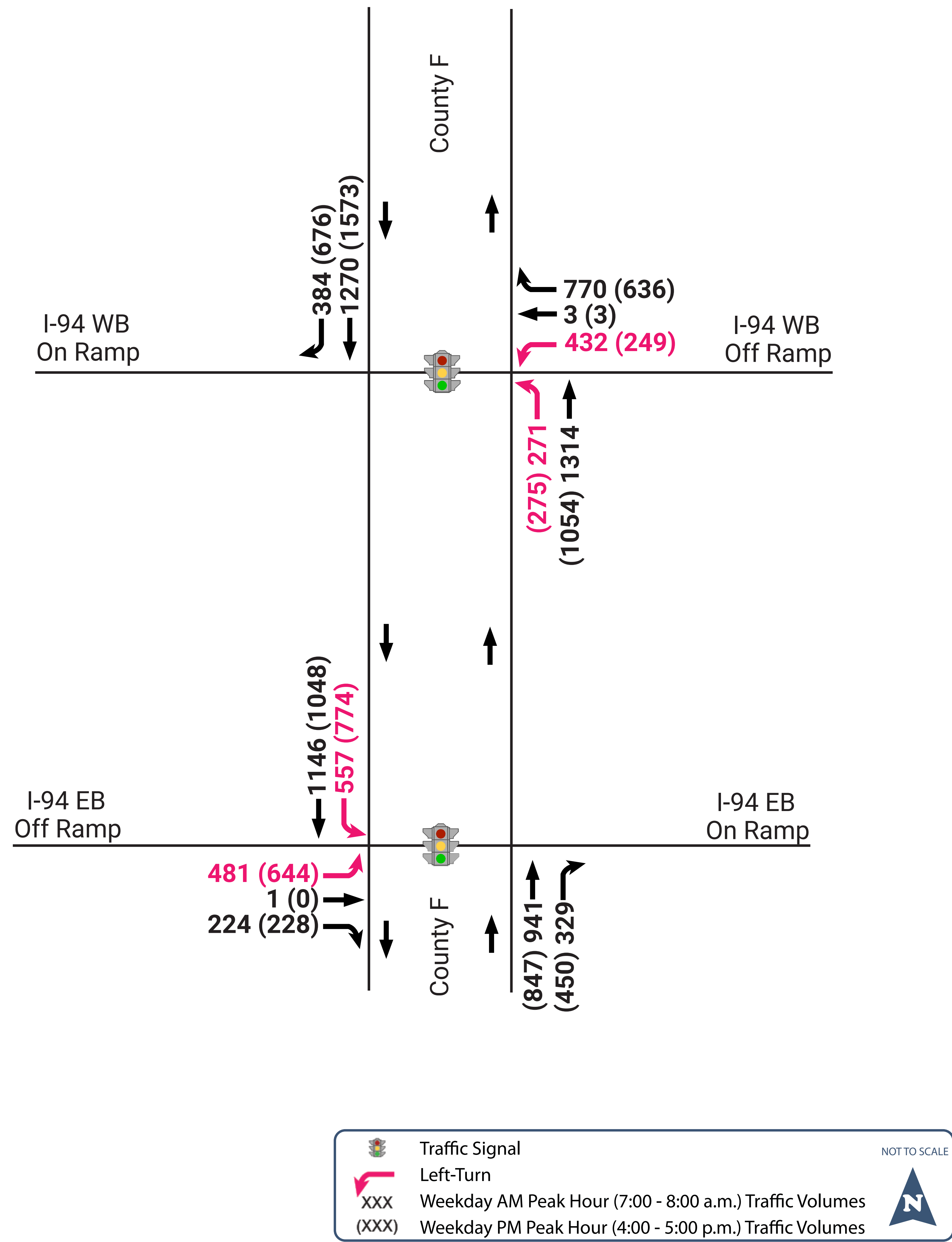
### South of Interchange





# I-94 FREEWAY INTERCHANGE WITH REDFORD BLVD (COUNTY F) TRAFFIC

## Existing Volumes



## Existing / New Configuration Volumes

