

Definitions of Work



Stone School Road,
Miramar Road

Bridge Concrete Overlay – Scarify existing concrete bridge deck top side and place a new concrete wearing surface.



Stone School Road,
Miramar Road

Expansion Joint Replacement – Remove the deteriorated expansion joint hardware and concrete at the ends of the bridge and replace with new joint components.



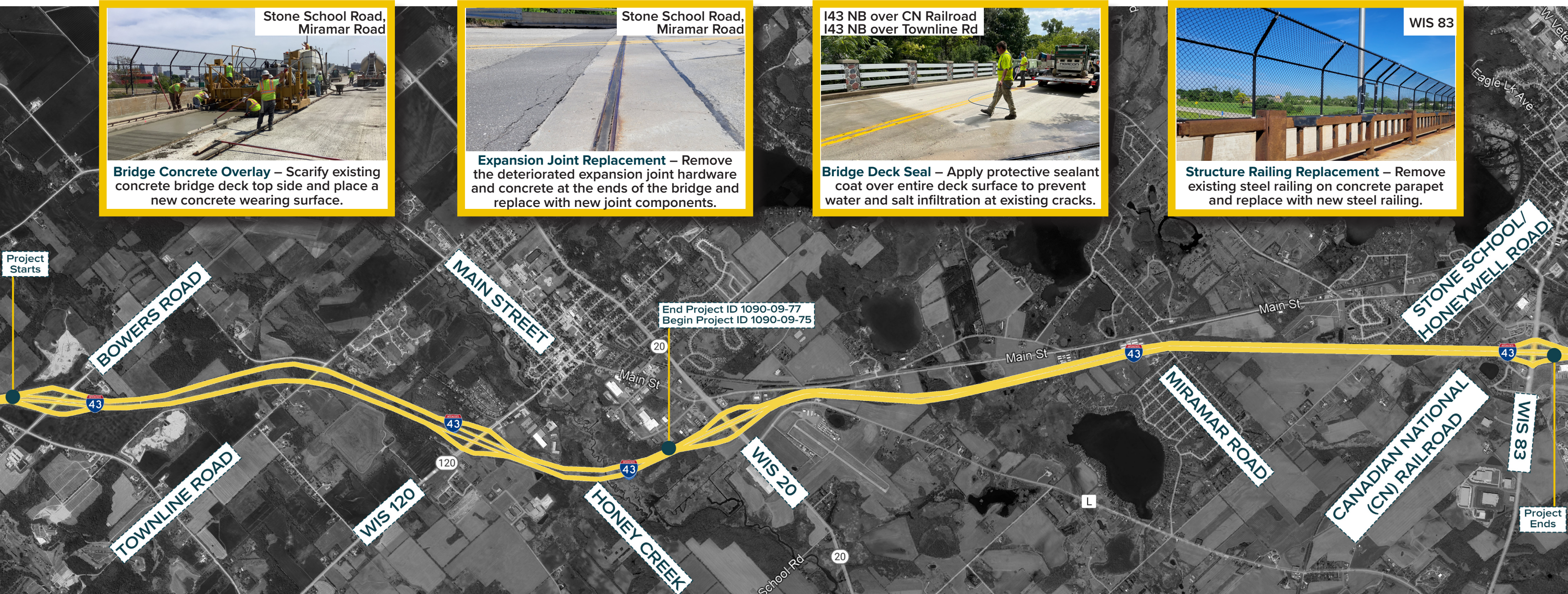
I43 NB over CN Railroad
I43 NB over Townline Rd

Bridge Deck Seal – Apply protective sealant coat over entire deck surface to prevent water and salt infiltration at existing cracks.



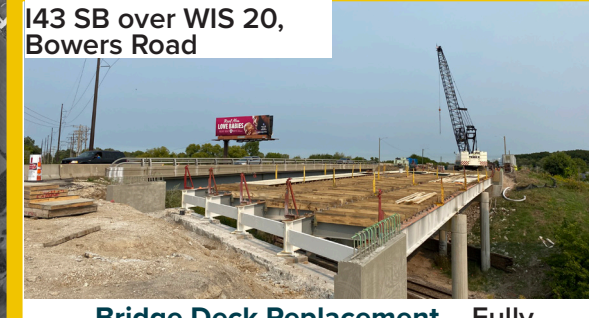
WIS 83

Structure Railing Replacement – Remove existing steel railing on concrete parapet and replace with new steel railing.



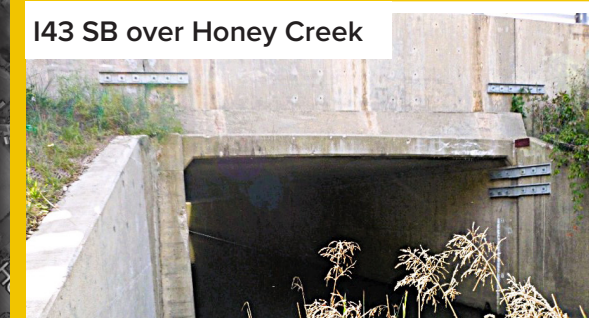
WIS 83, I43 NB over CN Railroad
I43 NB + SB over Townline Rd

Bearing Replacement – Remove all components of the original bearings supporting the bridge girders and replace with new bearings.



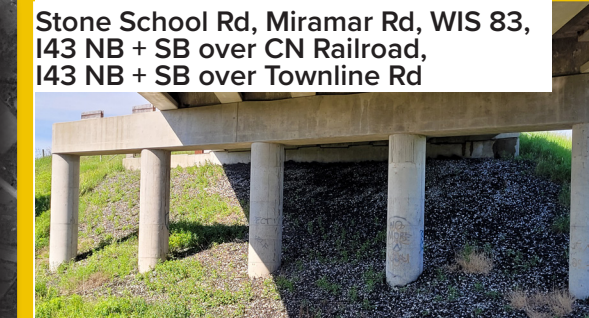
I43 SB over WIS 20,
Bowers Road

Bridge Deck Replacement – Fully remove existing concrete bridge deck and replace with new concrete deck with concrete parapets.



I43 SB over Honey Creek

Wing Strapping – Anchoring wingwalls to culvert wall in order to stabilize structure without the need for replacement.



Stone School Rd, Miramar Rd, WIS 83,
I43 NB + SB over CN Railroad,
I43 NB + SB over Townline Rd

Reseal Slope Paving – Apply seal coat to existing aggregate along slope at abutment.



All Locations

Concrete Surface Repair – Remove damaged concrete sections and patch with new concrete to protect rebar.



I43 (Bowers Road to WIS 83) : Structure Improvements Walworth and Waukesha Counties, WI