

# WIS 124: Duncan Creek Bridge Rehabilitation Project

Chippewa Falls

Chippewa County

July 2025



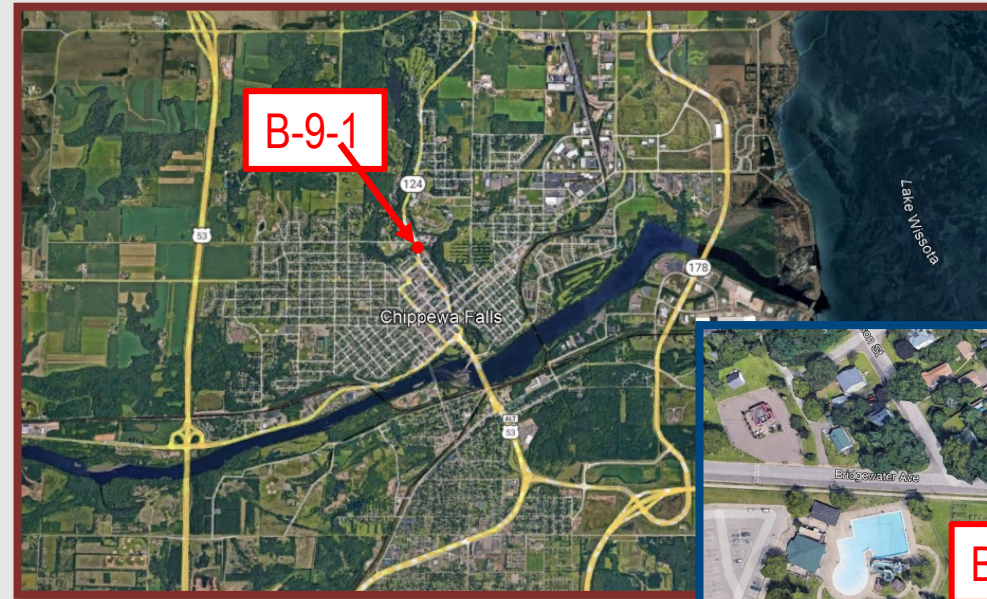
# Agenda

- Project Location
- Purpose and Need
- Proposed Improvements
- Traffic Impacts
- Project Schedule
- Contact Information
- Public Comment



# Project Location

- Bridge B-9-1
  - WIS 124 over Duncan Creek
  - Chippewa County city of Chippewa Falls



# Purpose and Need

- Purpose

- Maintain safety, functionality and long-term integrity of the bridge structure, ensuring it can accommodate current and future traffic

- Need

- Deteriorating bridge elements
  - Joints
  - Steel girders
  - Backwalls
  - Bearings



# Proposed Improvements

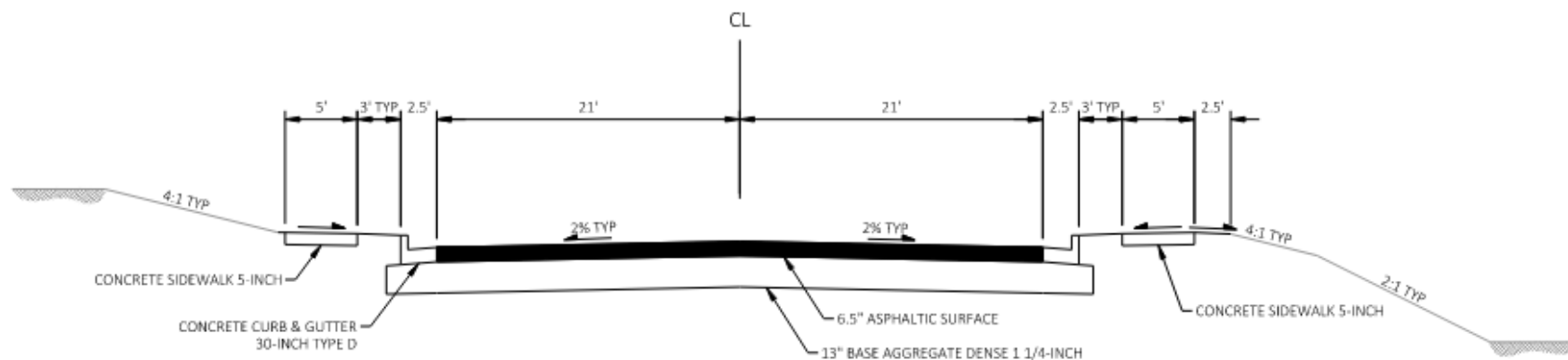
- Structure Improvements:

- Joint replacement
- Steel girder painting
- Backwall repairs
- Bearing replacement

- Roadway Improvements:

- Approach slab installation
- Minor asphalt resurfacing
- Sidewalk, curb and gutter repair

# Proposed Improvements

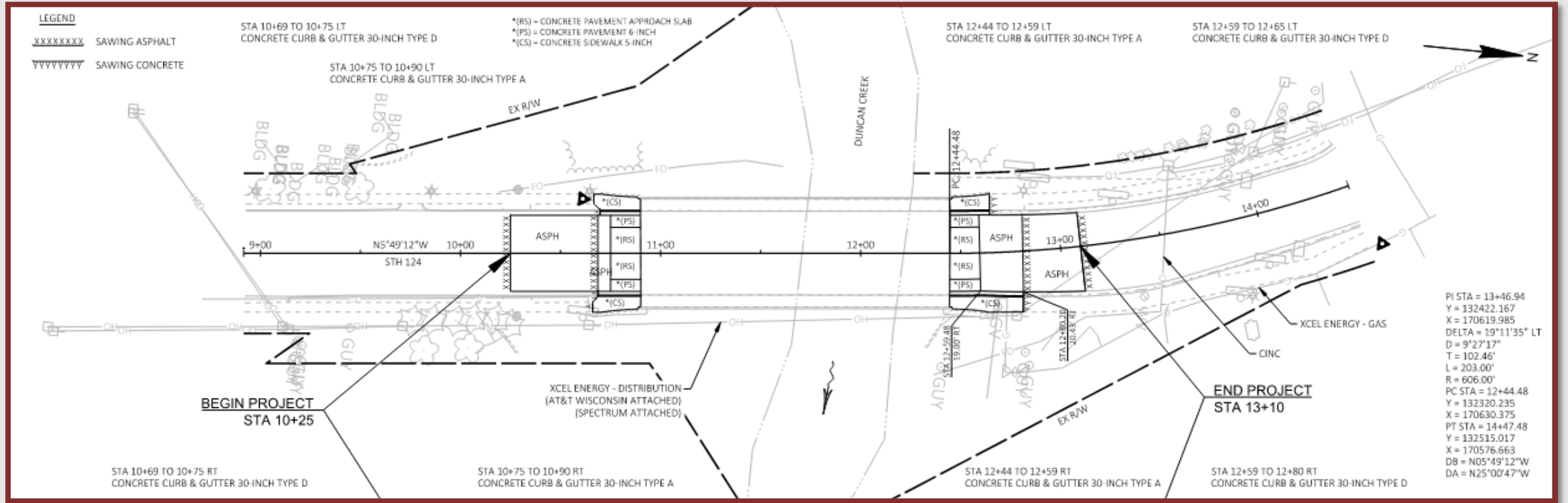


## FINISHED TYPICAL SECTION

STA 10+69.24 - 10+75.00

STA 12+59.50 - 12+81.02

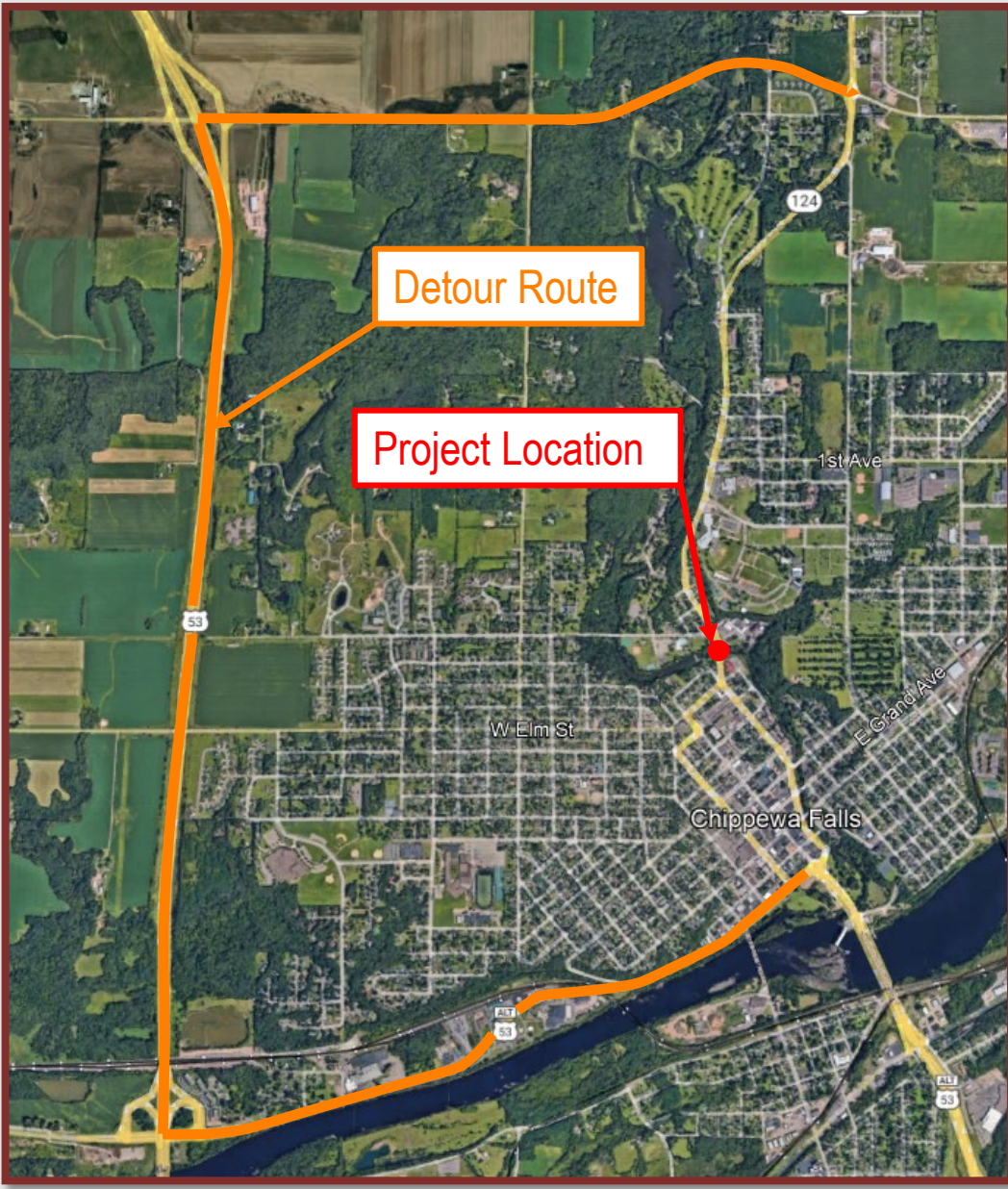
# Proposed Improvements





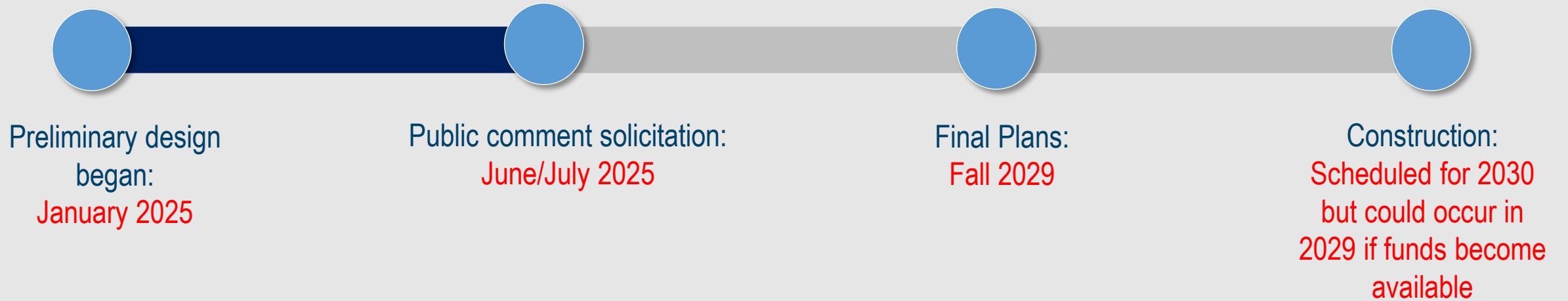
# Traffic Impacts

- Duncan Creek Bridge to be closed to for the duration of the project
  - Work anticipated to take two months to complete.
  - Vehicle traffic will be detoured via West River Street, US 53 and County S.
  - Pedestrian and bicycle traffic will be maintained across the structure's sidewalk.





# Project Schedule



# Contact Information

- WisDOT Consultant Project Manager: Bill Biesmann, PE
  - (608) 310-3286, [bill.biesmann@klengineering.com](mailto:bill.biesmann@klengineering.com)
- WisDOT Project Supervisor: Nicole Passuello, PE
  - (715) 833-5572, [nicole.passuello@dot.wi.gov](mailto:nicole.passuello@dot.wi.gov)
- Consultant Project Manager: Eric Price, PE
  - (608) 826-6146, [eprice@correinc.com](mailto:eprice@correinc.com)



# Public Comment

- WisDOT is accepting public comments on the proposed project through July 25 by:
  - Email: [Bill.Biesmann@klengineering.com](mailto:Bill.Biesmann@klengineering.com)
  - Mail: Wisconsin Department of Transportation  
718 W. Clairemont Ave.  
Eau Claire, WI 54701  
Attn.: Christena O'Brien

